

University Planning, Design & Construction

Project Management

Campus & Facilities Planning

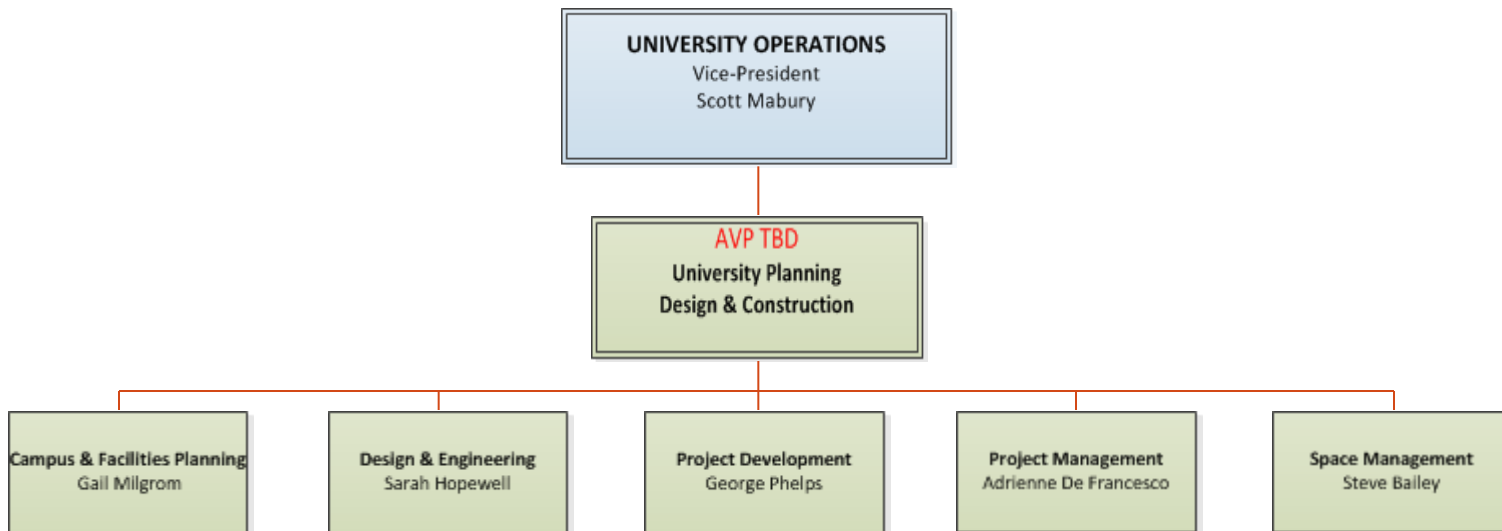


ANNUAL REVIEW 2012

January 2013

University Planning, Design & Construction

Organizational Structure



- ▶ UPDC is an amalgamation of the former Real-Estate Operations with the Office of Campus and Facilities Planning.
 - ▶ Mandate is to integrate and coordinate across the areas of planning, project development, design, and management of projects and space to deliver value and consistent level of service for the University.
-



New Policy on Capital Planning and Capital Projects

- ▶ Level 1 - <\$3m
- ▶ Level 2 - \$3m to \$10m
- ▶ Level 3 - >\$10m



Capital Projects and Space Allocation Committee

(formerly known as AFD)

- ▶ **CaPS**

- ▶ St. George Projects \$100,000 to \$3,000,000
- ▶ Space allocations, signage, etc.

- ▶ **CaPS Exec**

- ▶ All Campuses
- ▶ All Projects >\$3 million recommend to Vice President Provost and Vice President University Operations



AFD Projects July 1, 2011 - June 30, 2012

Sector	\$50k to \$499k	\$500k to \$1.99m	Total
UTSC	\$2,726,387	\$4,233,959	\$6,960,346
UTM	\$1,739,891	\$4,947,154	\$6,687,045
<i>Subtotal</i>			<i>\$13,647,391</i>
Health Sciences	\$2,497,798	\$3,162,720	\$5,660,518
Arts and Science	\$2,901,961	\$0	\$2,901,961
Engineering	\$1,890,769	\$1,092,292	\$2,983,061
Other Faculties	\$4,148,916	\$3,917,825	\$8,066,741
Campus	\$5,035,877	\$6,118,664	\$11,154,541
Residences	\$22,474	\$1,665,000	\$1,687,474
<i>Subtotal</i>			<i>\$32,454,296</i>
Total	\$20,964,073	\$25,137,614	\$46,101,687



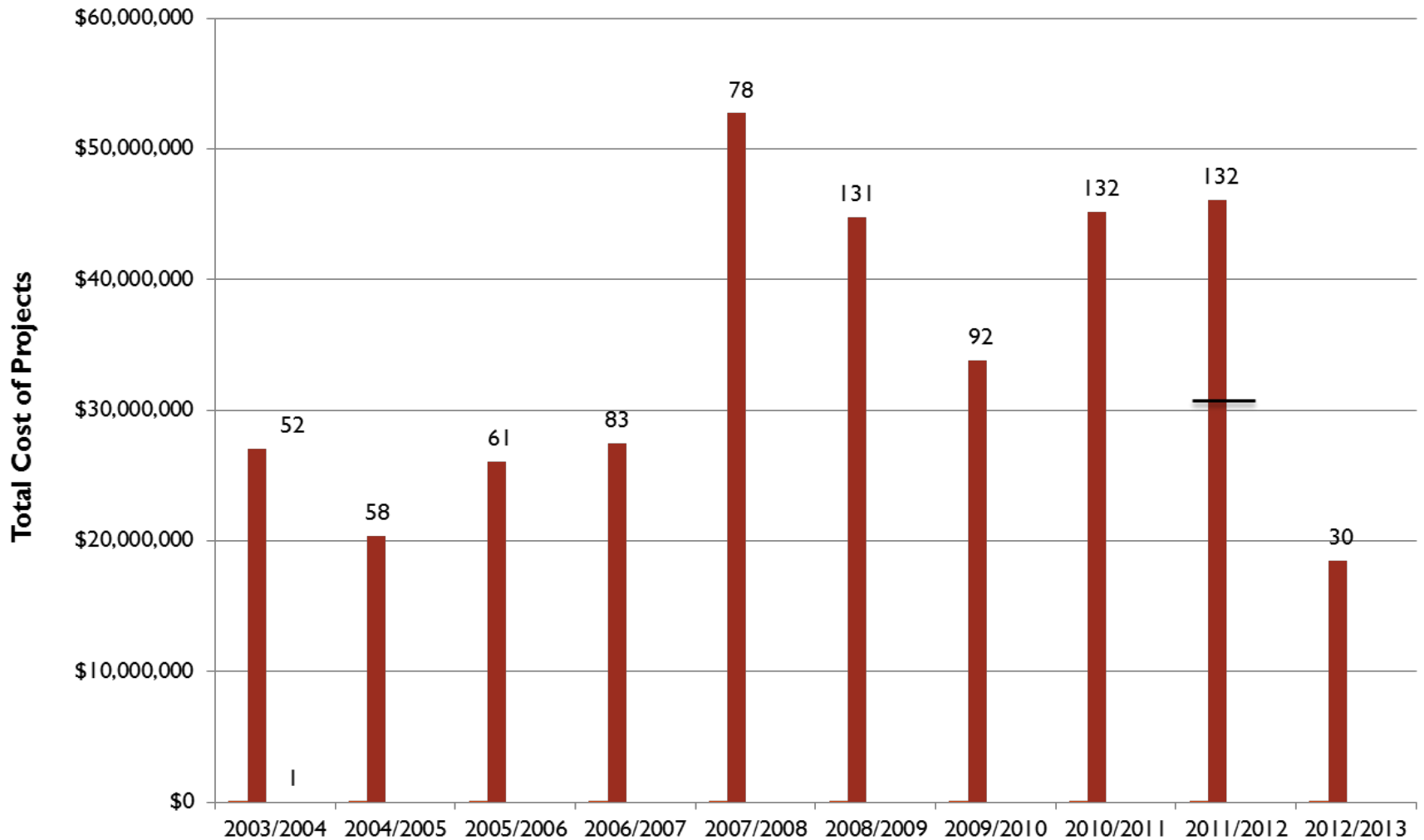
CaPS Projects

July 1, 2012 to December 31, 2013

Sector	Local \$100k to \$2.99m	CaPS \$100k to \$2.99m
UTSC	\$3,644,987	\$0
UTM	\$2,980,173	\$1,041,146
<i>Subtotal</i>	<i>\$6,625,160</i>	<i>\$1,041,146</i>
Health Sciences		\$2,033,275
Arts and Science		\$2,380,788
Engineering		\$1,585,647
Other Faculties		\$5,708,636
Campus		\$5,768,768
Residences		\$0
<i>Subtotal</i>		<i>\$17,477,474</i>
Total	\$6,625,160	\$18,518,620

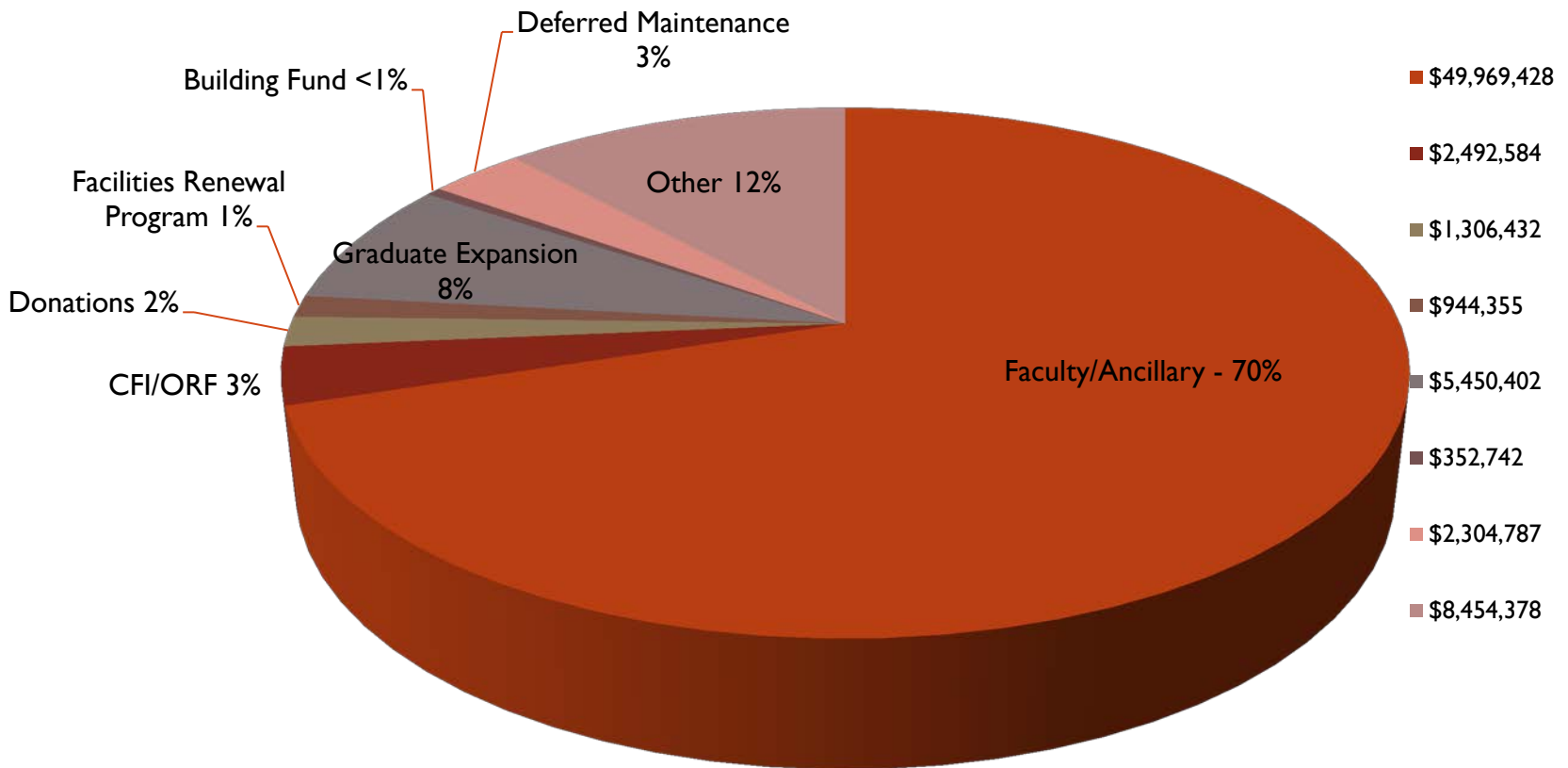


Total Projects Approved by Year

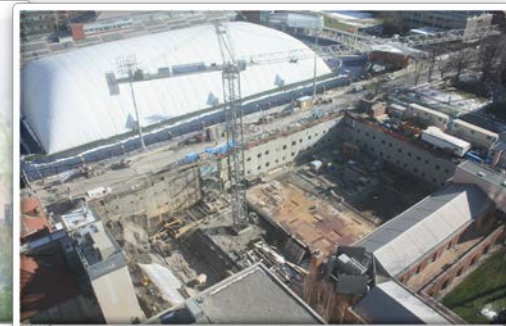


Source of Funding

July 2011 – December 2012



Capital Projects January – December 2012



Projects Underway

Major Capital Projects January – December 2012 Underway

Project	Schedule	Budget	Size
UTM North Building	Completion October 2014	\$56M	10440 GSM

UTM North Campus Building

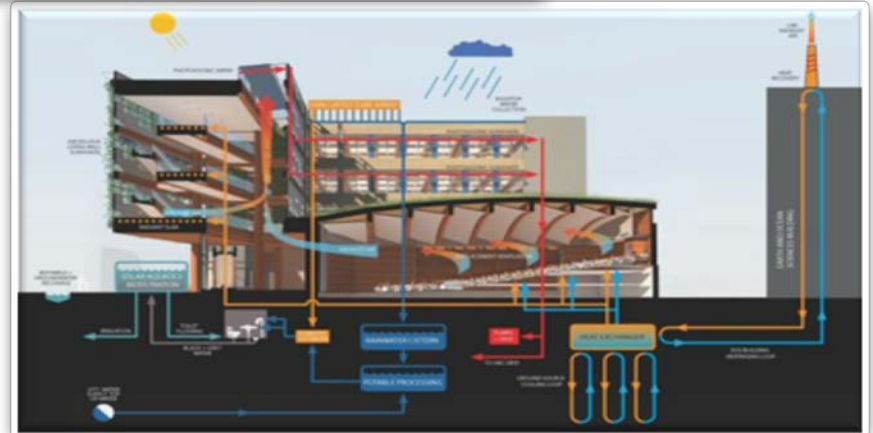
Construction Manager: Eastern Construction

Architect: Perkins + Will

Completion: October 2014

Budget: \$56M

Size: 10,440 GSM



Major Capital Projects January – December 2012 Underway

Project	Schedule	Budget	Size
UTM North Building	Completion October 2014	\$56M	10440 GSM
Kaneff Building	Completion September 2014	\$35M	6830 GSM

Kaneff Centre

Design Build: PCL Constructors Canada Inc.
with Moriyama & Teshima Architects

Completion: September 2014

Budget: \$35M

Size: 6830 GSM



Major Capital Projects January – December 2012 Underway

Project	Schedule	Budget	Size
UTM North Building	Completion October 2014	\$56M	10440 GSM
Kaneff Building	Completion September 2014	\$35M	6830 GSM
Goldring Centre for High Performance Sport	Completion September 2014	\$61.7M	11000 GSM

Goldring Centre for High Performance Sport

Design Build:
Ellis Don / Patkau / MJM



Completion: September 2014
Budget: \$61.7M
Size: 11,000 GSM



Major Capital Projects January – December 2012 Underway

Project	Schedule	Budget	Size
UTM North Building	Completion October 2014	\$56M	10440 GSM
Kaneff Building	Completion September 2014	\$35M	6830 GSM
Goldring Centre for High Performance Sport	Completion September 2014	\$61.7M	11000 GSM
CSP Fuel Train	Boiler 1&2 - December 2012 Boiler 3 - March 2013 Boiler 4&5 to follow	\$6.13M	not available

CSP Fuel Train

Contractor: Bird Mechanical Ltd.

Consultant: Arctic Combustion Ltd. (M&E)

Architect: Van Elslander Carter Architects (Control room)

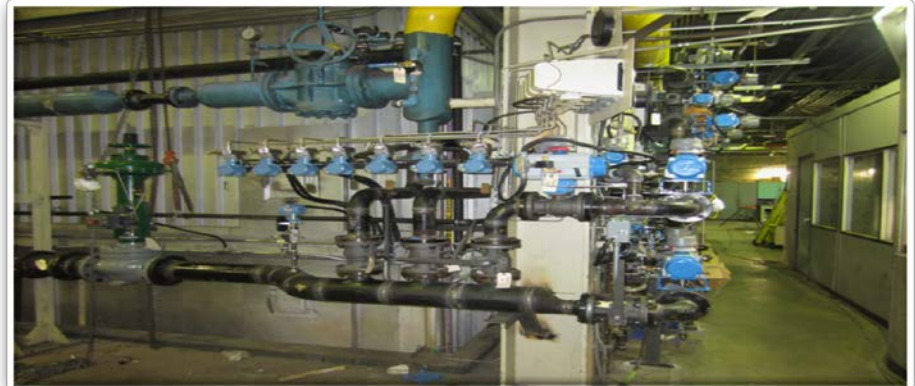
Completion: Boiler 1&2 Dec.2012

Boiler 3 March 2013

Boiler 4&5 to follow

Budget: \$6.13M

Size: N/A



Capital Projects January to December 2012



Projects Completed

Major Capital Projects January - December 2013 Completed

Project	Schedule	Budget	Size
Centre for Jewish Studies	Completion May 2012	\$500K	127 GSM

Centre for Jewish Studies

Contractor: Olar Limited

Architect: Quadrangle Architects Limited

Completion: May 2012

Budget: \$500K

Size: 127 GSM



(Project Under \$3M)

Major Capital Projects January - December 2013 Completed

Project	Schedule	Budget	Size
Centre for Jewish Studies	Completion May 2012	\$500K	127 GSM
UTM Bio Teaching Lab	Completion August 2012	\$8.06M	1698 GSM

UTM Bio Teaching Labs

Construction Manager: Dineen Construction Corporation
Architect: Robbie Young + Wright / IBI Group Architects



Completion: August 2012
Budget: \$8.6M
Size: 1698 GSM



Major Capital Projects January - December 2013 Completed

Project	Schedule	Budget	Size
Centre for Jewish Studies	Completion May 2012	\$500K	127 GSM
UTM Bio Teaching Lab	Completion August 2012	\$8.06M	1698 GSM
Simcoe Hall (room 134)	Completion July 2012	\$1,448,400	348 GSM

Simcoe Hall Interior – Suite 134

Construction Manager: Harbridge and Cross
Architect: Design and Engineering, UofT



Completion: July 2012
Budget: \$1,484,400
Size: 348 GSM



Major Capital Projects January - December 2013 Completed

Project	Schedule	Budget	Size
Centre for Jewish Studies	Completion May 2012	\$500K	127 GSM
UTM Bio Teaching Lab	Completion August 2012	\$8.6M	1698 GSM
Simcoe Hall (room 134)	Completion July 2012	\$1,448,400	348 GSM
Sokolowski Lab	Completed December 2012	\$782,382	167 GSM

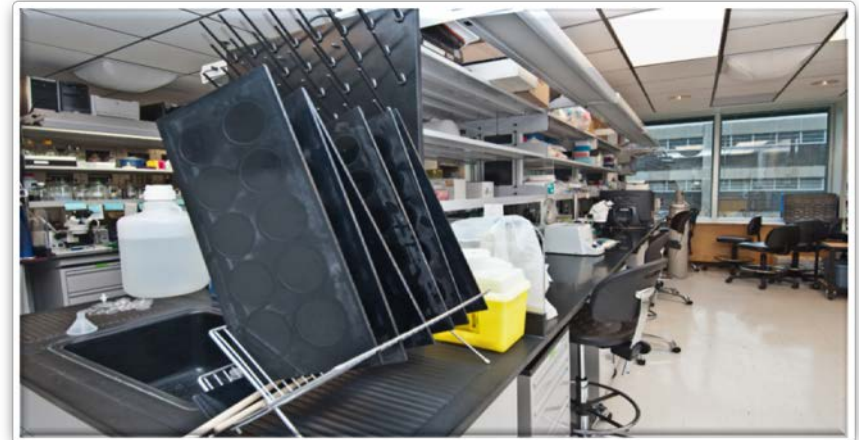
Sokolwski Labs

Contractor: Olar Limited

Architect: Jurecka & Associates



Completion: December 2012
Budget: \$782,382
Size: 167 GSM



(Project Under \$3M)

Major Capital Projects January - December 2013 Completed

Project	Schedule	Budget	Size
Centre for Jewish Studies	Completion May 2012	\$500K	127 GSM
UTM Bio Teaching Lab	Completion August 2012	\$8.6M	1698 GSM
Simcoe Hall (room 134)	Completion July 2012	\$1,448,400	348 GSM
Sokolowski Lab	Completed December 2012	\$782,382	167 GSM
Robarts Library 4th Floor	Completion January 2013	\$2.8M	1105 GSM

Robarts Library – 4th Floor

Contractor: Olar

Architect: Gow Hastings Architects



Completion: January 2013

Budget: \$2.8M

Size: 1105 GSM



Major Capital Projects January - December 2013 Completed

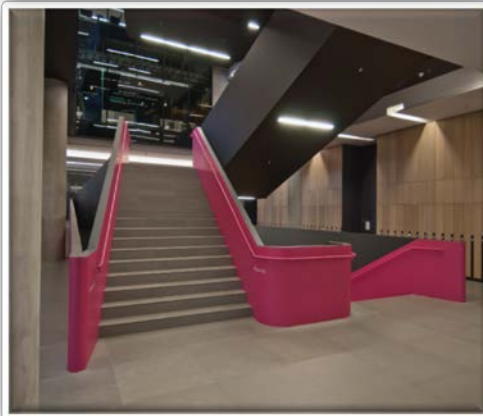
Project	Schedule	Budget	Size
Centre for Jewish Studies	Completion May 2012	\$500K	127 GSM
UTM Bio Teaching Lab	Completion August 2012	\$8.6M	1698 GSM
Simcoe Hall (room 134)	Completion July 2012	\$1,448,400	348 GSM
Sokolowski Lab	Completed December 2012	\$782,382	167 GSM
Robarts Library 4th Floor	Completion January 2013	\$2.8M	1105 GSM
Rotman School of Management	Completed May 2012	\$93,799,047	15,159 GSM

Rotman School of Management

Construction Manager: Eastern
Architect: KPMB



Completion: May 2012
Budget: \$93,799,047.00
Size: 15,159 GSM



Major Capital Projects January - December 2013 Completed

Project	Schedule	Budget	Size
Centre for Jewish Studies	Completion May 2012	\$500K	127 GSM
UTM Bio Teaching Lab	Completion August 2012	\$8.6M	1698 GSM
Simcoe Hall (room 134)	Completion July 2012	\$1,448,400	348 GSM
Sokolowski Lab	Completed December 2012	\$782,382	167 GSM
Robarts Library 4th Floor	Completion January 2013	\$2.8M	1105 GSM
Rotman School of Management	Completed May 2012	\$93,799,047	15,159 GSM
N & S Borden – Visual Studies	Completed December 2012	\$1,494,439.00	386 GSM

N & S Borden – Visual Studies

Construction Company: Rae Brothers

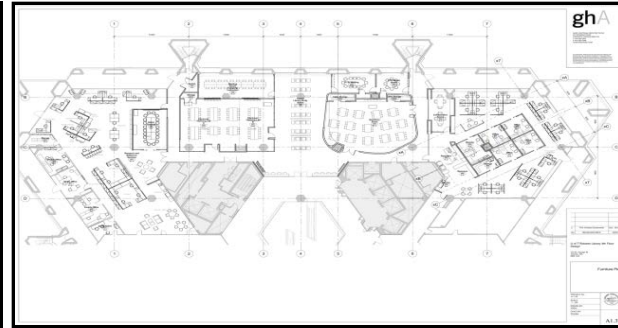
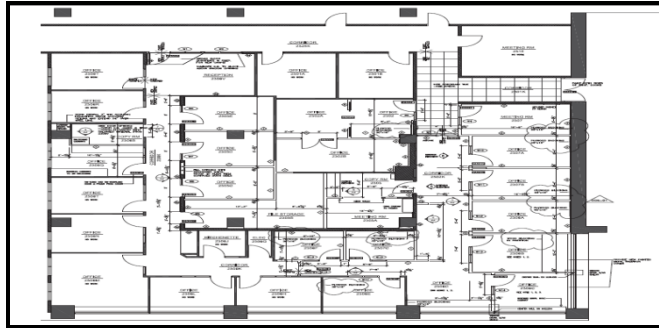
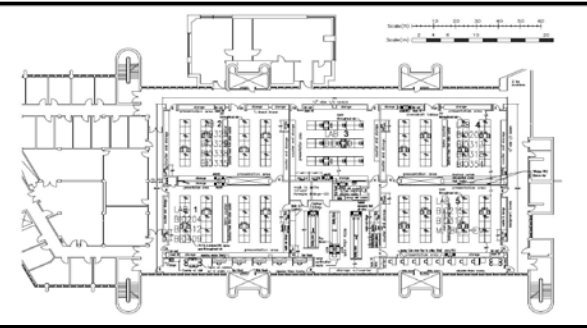
Architect: UPDC- Design & Engineering Group



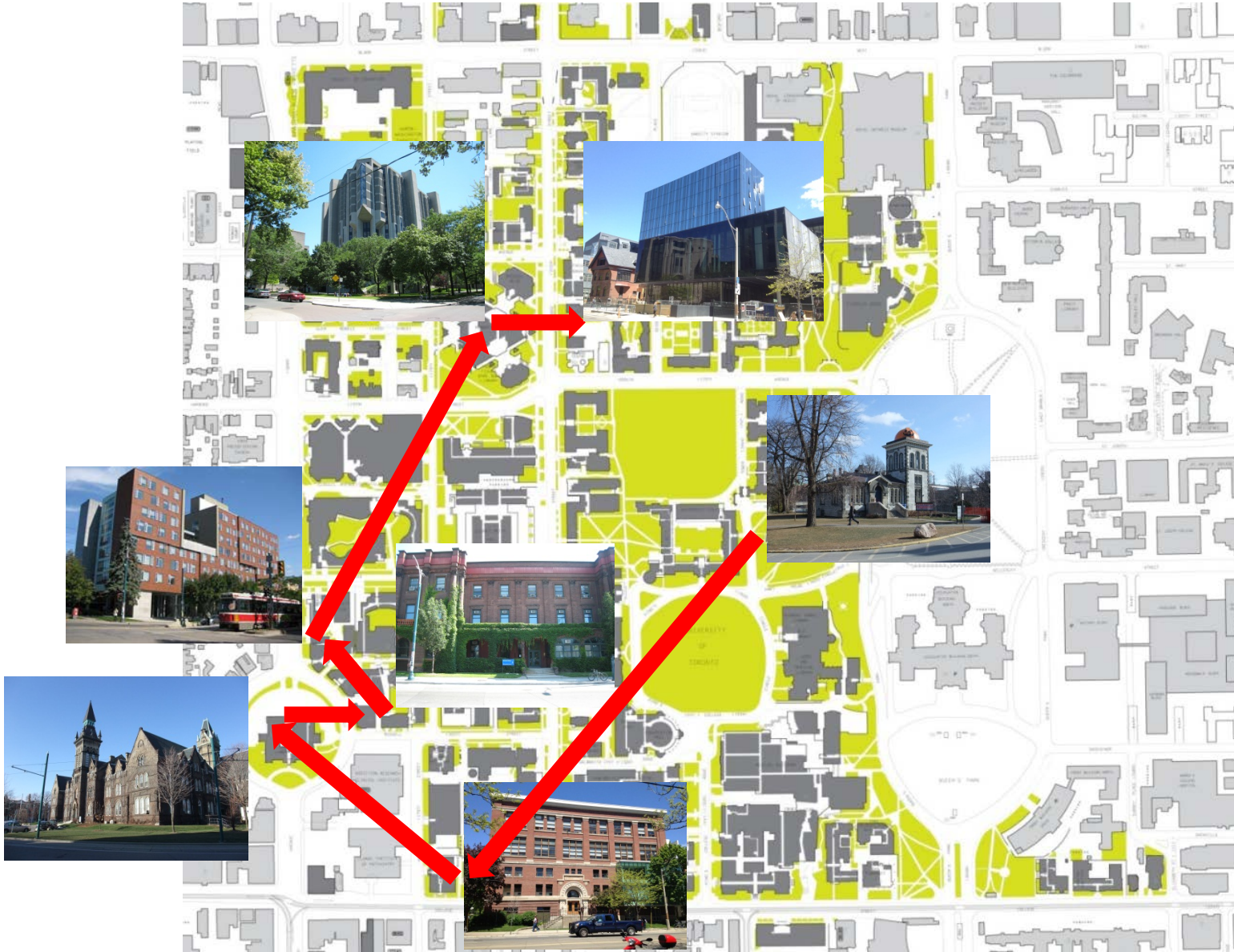
Completion: December 2012
Budget: \$1,494,439.00
Size: 386 GSM



Capital Projects January – December 2012



Projects Planned



Six degrees of separation...



John H. Daniels Faculty of Architecture, Landscape & Design

Architect: NADAAA (Boston) and Adamson Associates (Toronto)



Completion: July 2015

Budget: \$62M

Size: 10,219 GSM



Faculty of Law – Renovation/Expansion

Construction Manager: Eastern Construction

Design Architect: Hariri Pontarini Architects Executive Architect: B+H Architects



Completion: August 2015

Budget: \$54M

Size: 15,125 GSM



Successful Projects

Budget to Scope

Scope to Budget



Build To Budget

fit

- between consultants and project
- between construction delivery method and project
- between contractor/subcontractors and project complexity, size, specifics
- project managers, in-house project team

attention to detail

- close monitoring of changes—scope, site conditions, errors and omissions
- challenge details, materials and costs
- engage Campus & Facilities Planning on program shifts
- increase in “a” balanced off against decrease in “b”; budget or scope

internal communication

- within PM group
- within F&S group
- within available expertise--University-wide
- with Campus & Facilities Planning regarding scope as detailed in PPR

communication

- with client
- with project team

Design Review Committee

July 2011 – June 2012

- ▶ **When are projects reviewed by DRC?**
 - ▶ Projects in excess of \$3M approved by Governing Council
 - ▶ Have an exterior design component or include public space
- ▶ **Projects Reviewed**
 - ▶ UTSC Pan American Aquatics Centre
 - ▶ UTM North Building Phase I
 - ▶ Pan Am Field Hockey
 - ▶ Campus Signage
 - ▶ Bissell House Landscaping, Willcocks Common, North Campus Laneway
 - ▶ Bladen Building Stair Addition, Clara Benson Windows



Building Awards

July 2011 – December 2012

- ▶ **The Instructional Centre at UTM**
 - ▶ 2012 International Interior Design Association Annual Interior Design Competition, Winner (one of 6)
 - ▶ 2012 Award of Excellence, Mississauga Urban Design Awards
- ▶ **The Instructional Centre at UTSC**
 - ▶ 2012 Pug Awards, Honourable Mention in the Best Commercial/Institutional Building category
- ▶ **The UTM Terrence Donnelly Health Sciences Complex at UTM**
 - ▶ 2012 Governor General's Medal for Architecture
 - ▶ 2012 OAA Design Excellence Award "Best of Show"
 - ▶ 2012 OAA Design Excellence Award

