

Real Estate Operations

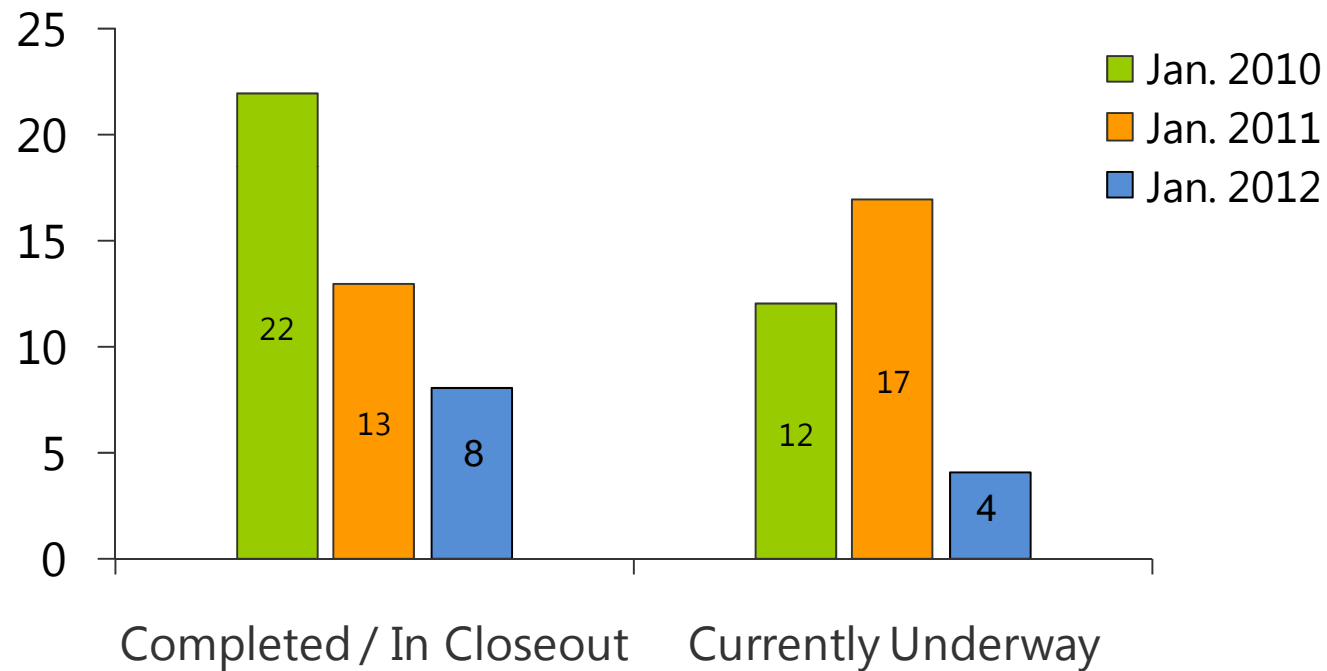


ANNUAL REVIEW 2011

January 2012

Major Capital Projects - January 2012

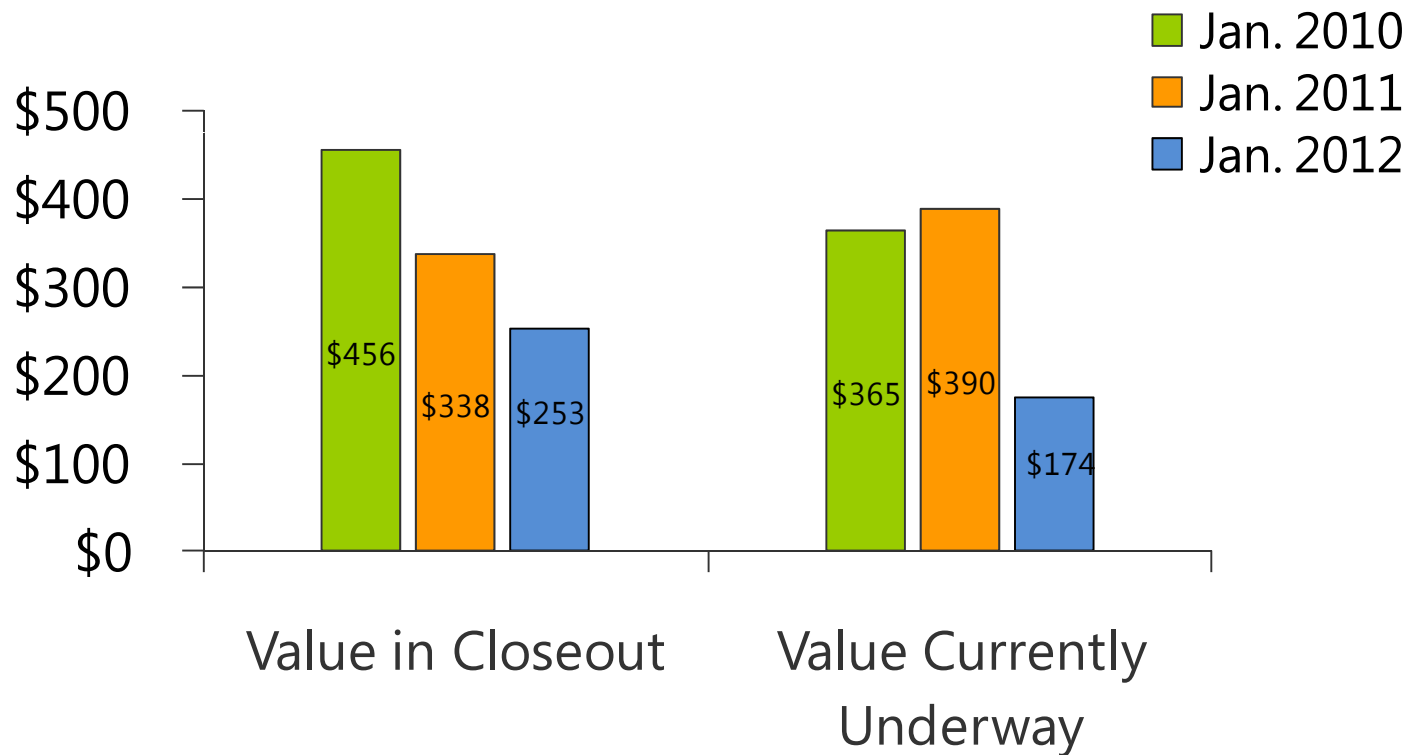
Total Active Projects, breakdown by status



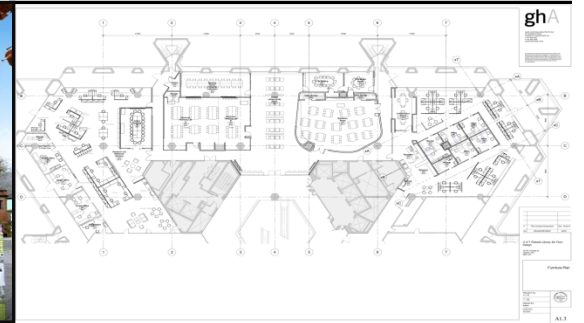
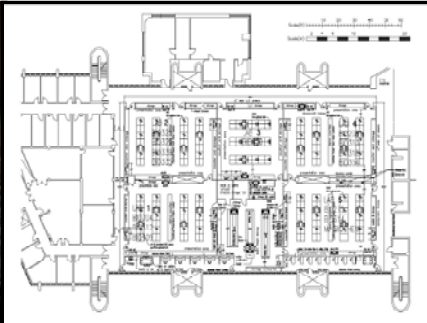
Major Capital Projects - January 2012

Aggregate Total Project Costs \$427M, breakdown by value

Project Costs (\$M)



Major Capital Projects - January 2012



Projects Underway

New addition to the Rotman Building

Construction Manager: Eastern
Architect: KPMB

CURRENT



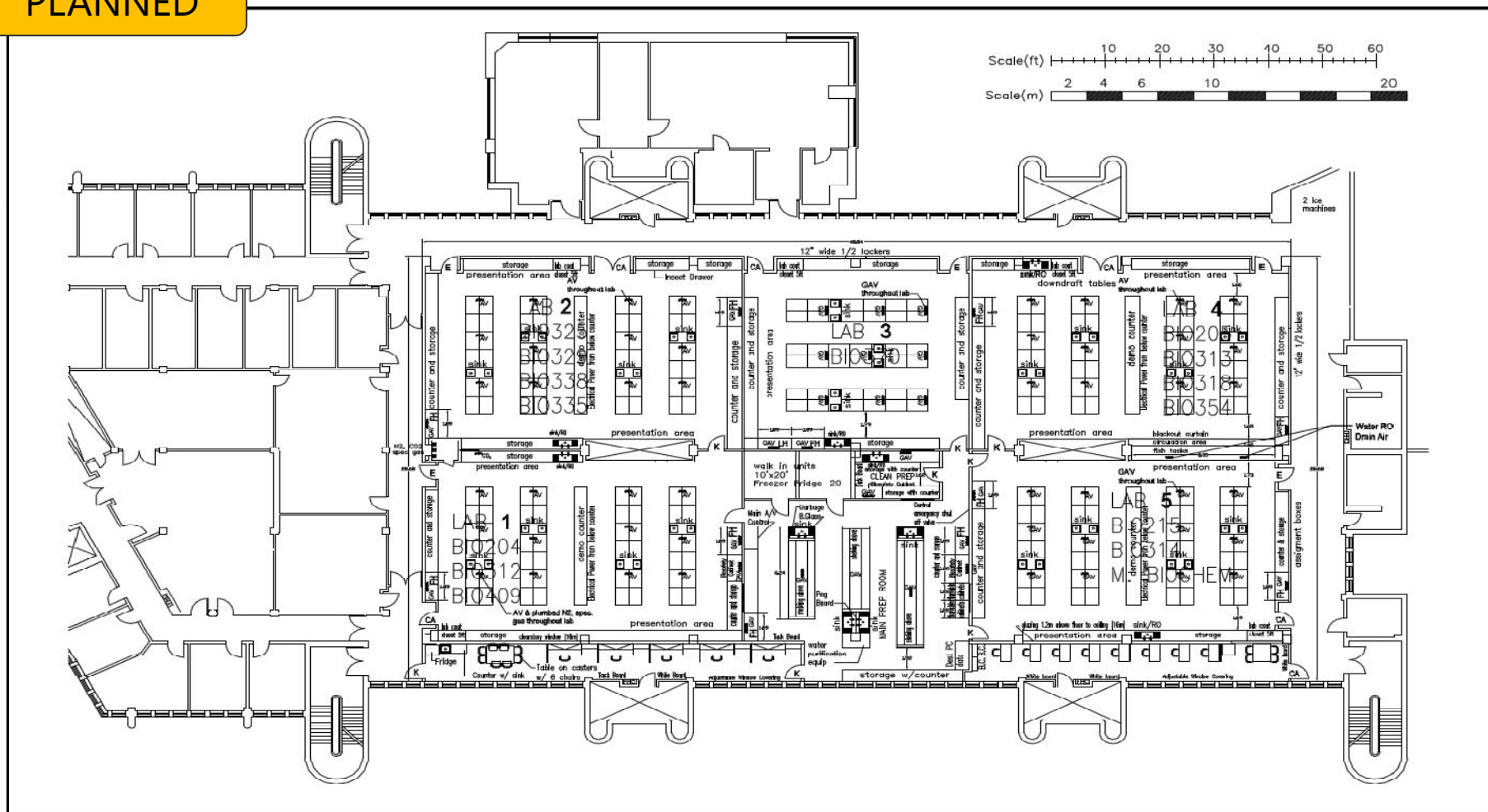
APRIL 2012

UTM Biology Teaching Lab

Construction Manager: Dineen

Architect: RYW/IBI

PLANNED



Goldring Centre

Integrated Team:
Ellis Don / Patkau / MJM



DECEMBER 2014

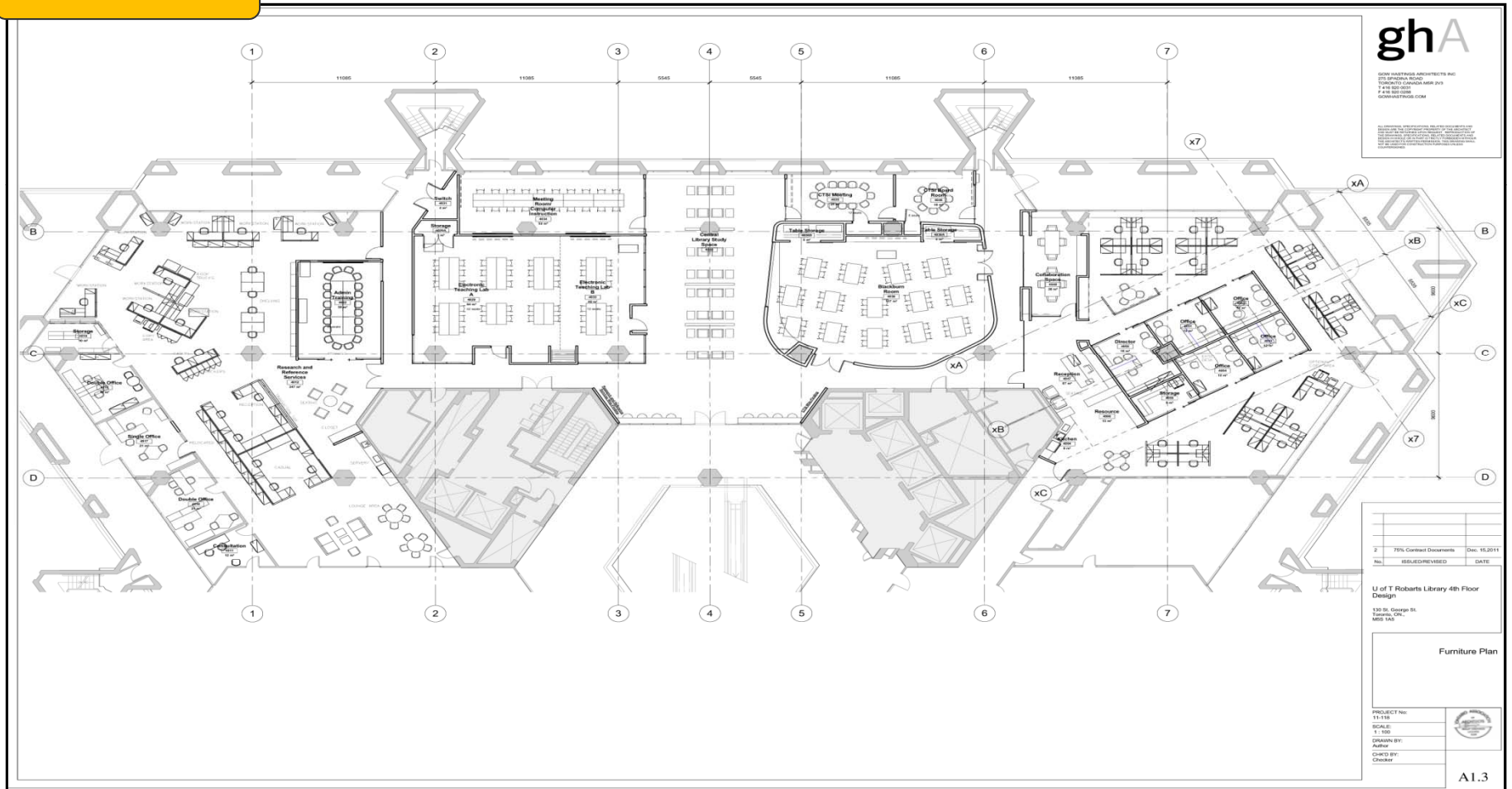


Robarts 4th Floor

Construction Manager: Govan Brown

Architect: GOW Hastings

PLANNED



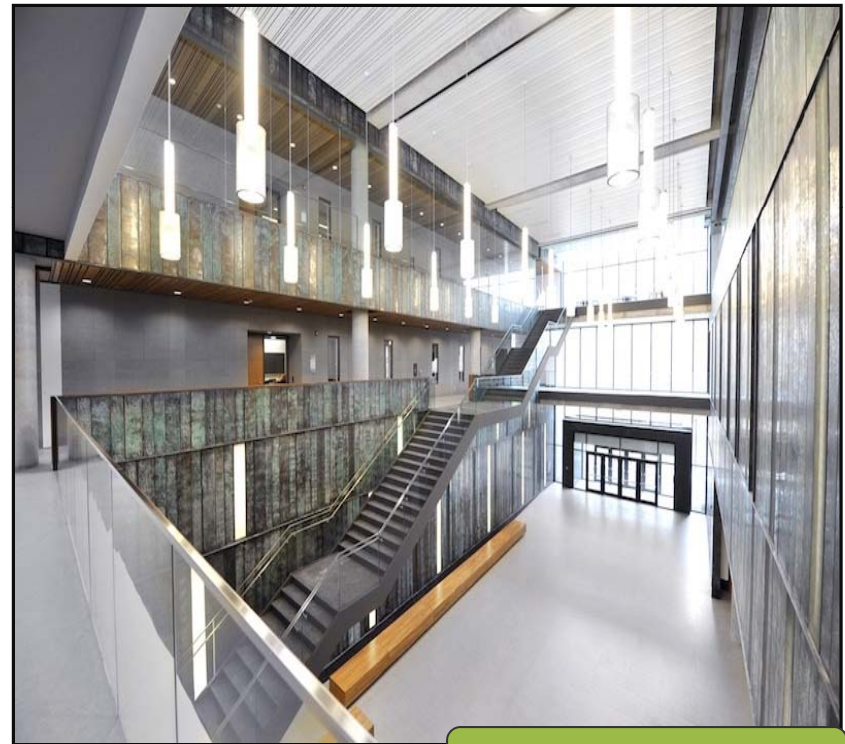
Major Capital Projects - January 2012



Projects Completed

UTM Instructional Centre

Integrated Team:
Eastern Construction / Perkins+Will



JANUARY 2012

UTSC Instructional Centre

Integrated Team:

Ellis Don / Diamond & Schmitt

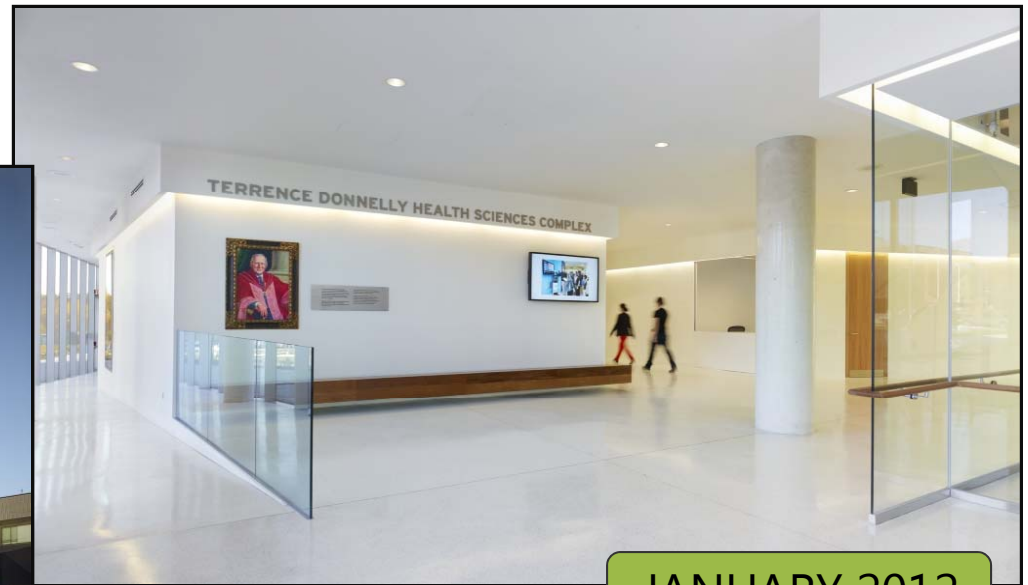


JANUARY 2012

Terrence Donnelly Health Sciences Complex (UTM)

Contractor: Harbridge & Cross

Architect: Kongats

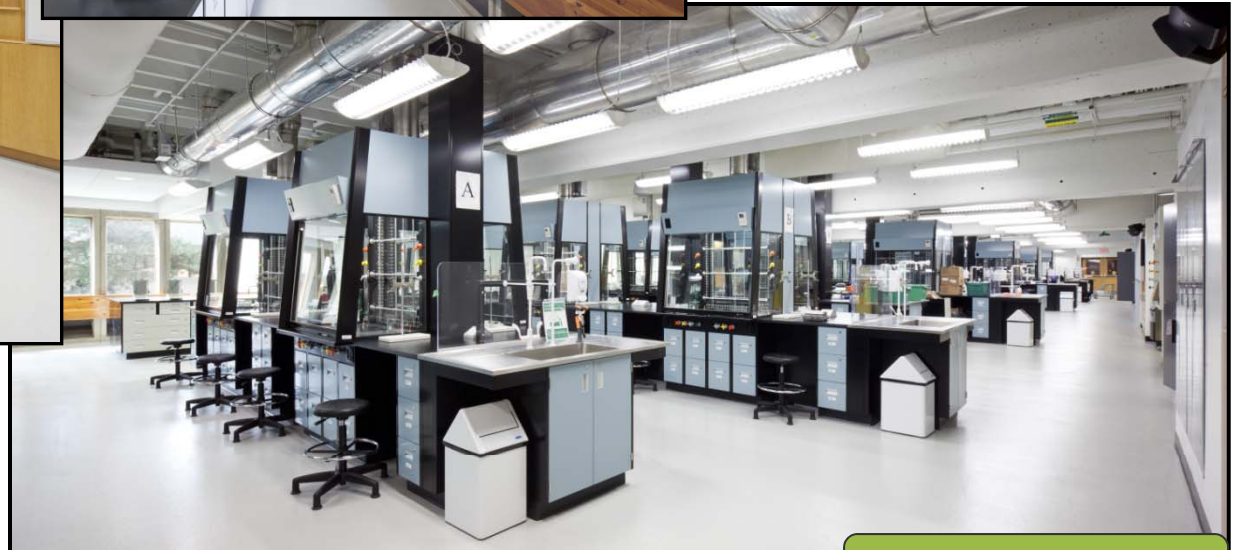


JANUARY 2012

UTM Chemistry Lab

Construction Manager: Govan Brown

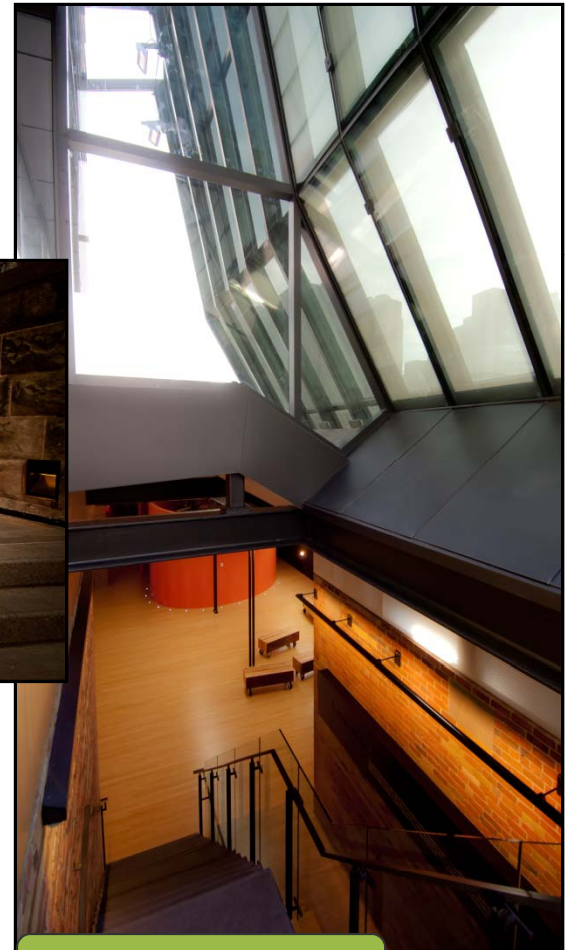
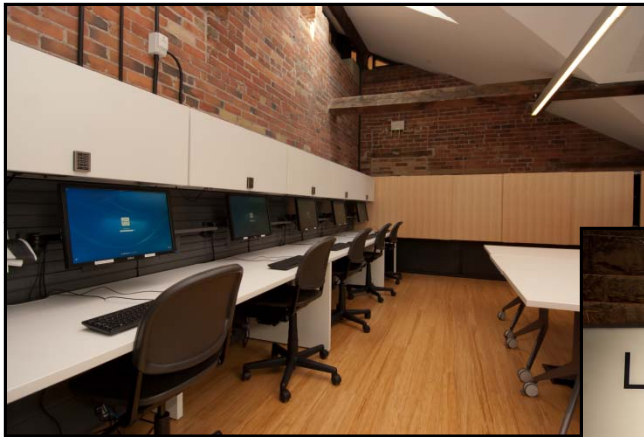
Architect: REO Design and Engineering Group



JANUARY 2012

Lassonde Mining Building

Construction Manager: Urbacon
Architect: Baird Sampson Neuert

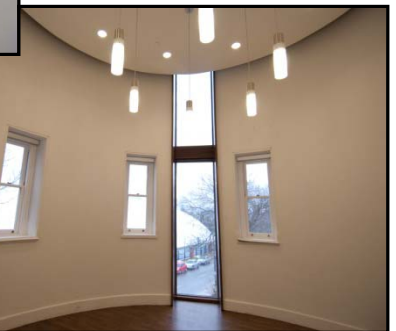


JANUARY 2012

School of Global Affairs, 315 Bloor Street West

Construction Manager: Govan Brown

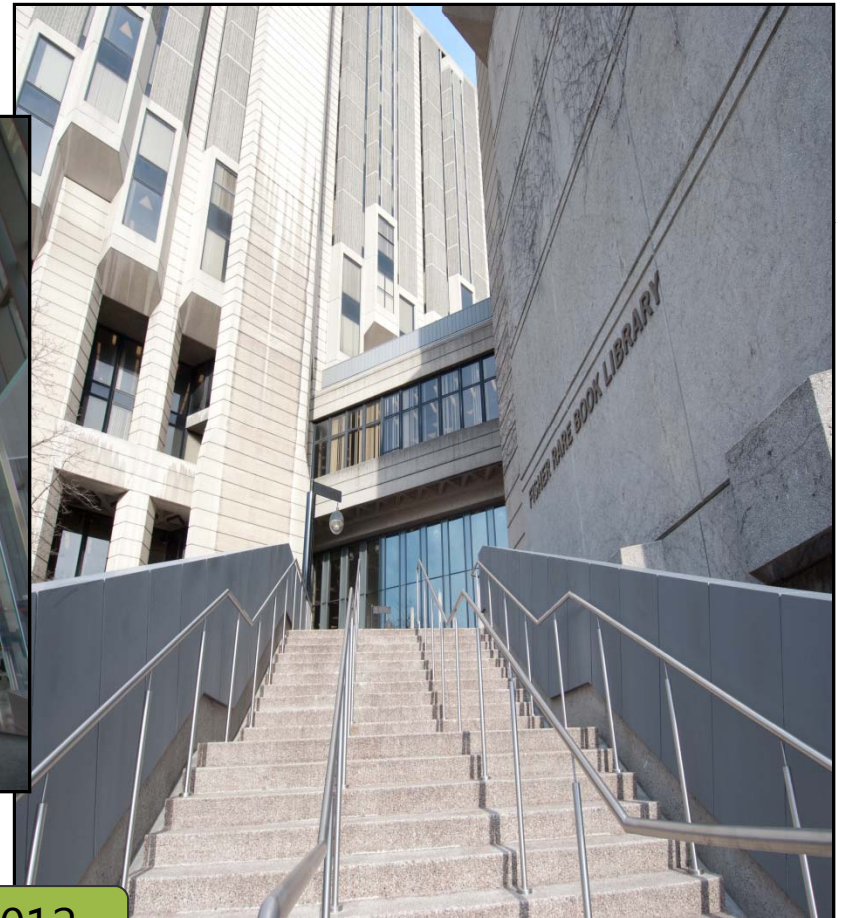
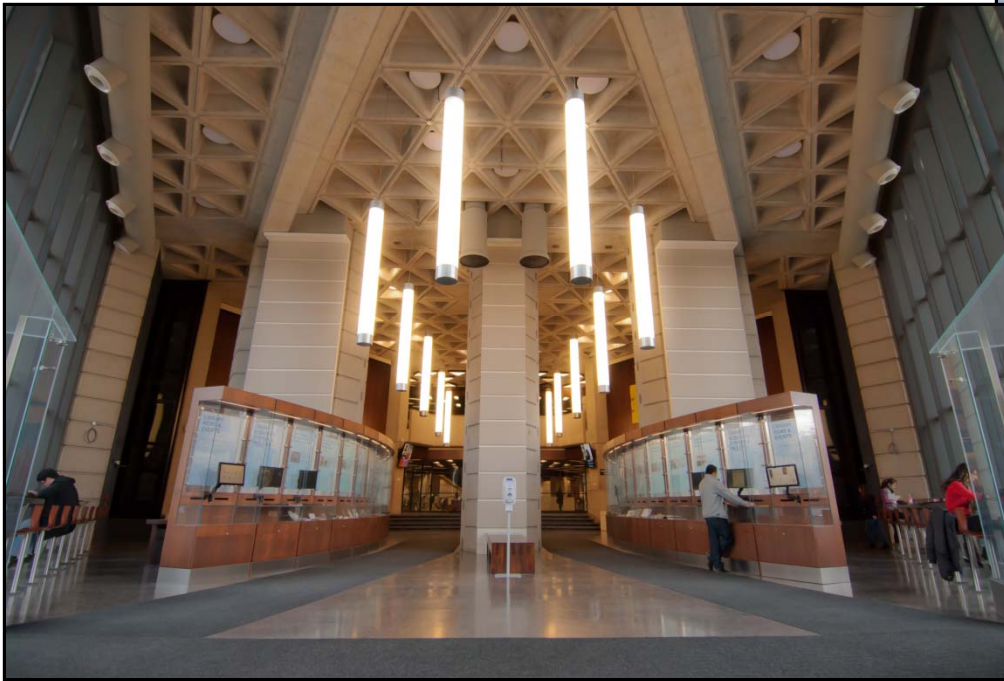
Architect: KPMB



JANUARY 2012

Robarts Library Renovations

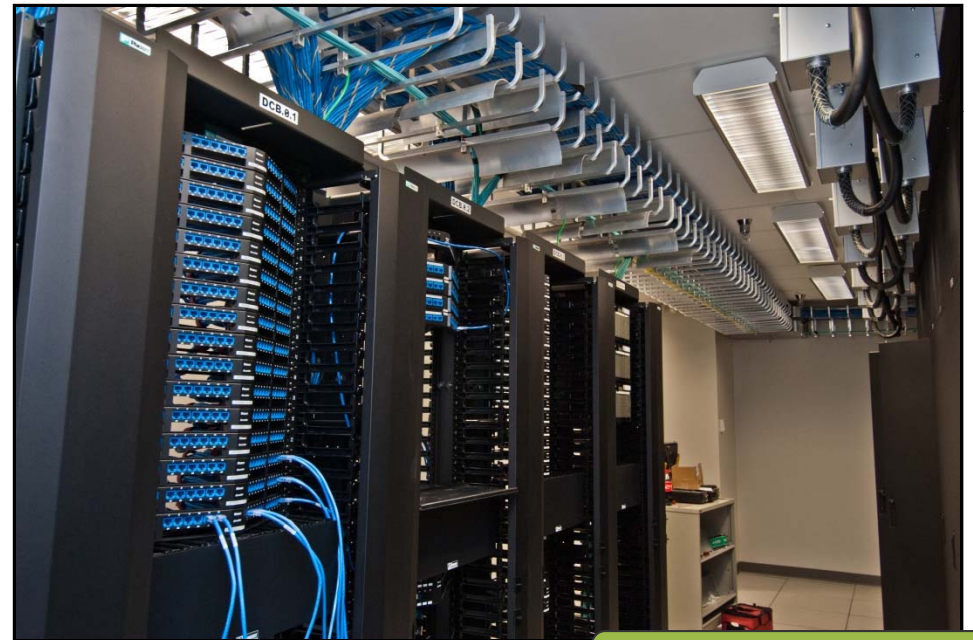
Construction Manager: Govan Brown
Architect: Diamond & Schmitt



JANUARY 2012

St. George Data Centre

Integrated Team:
Ehvert Engineering



JANUARY 2012