

Capital Projects & Real Estate

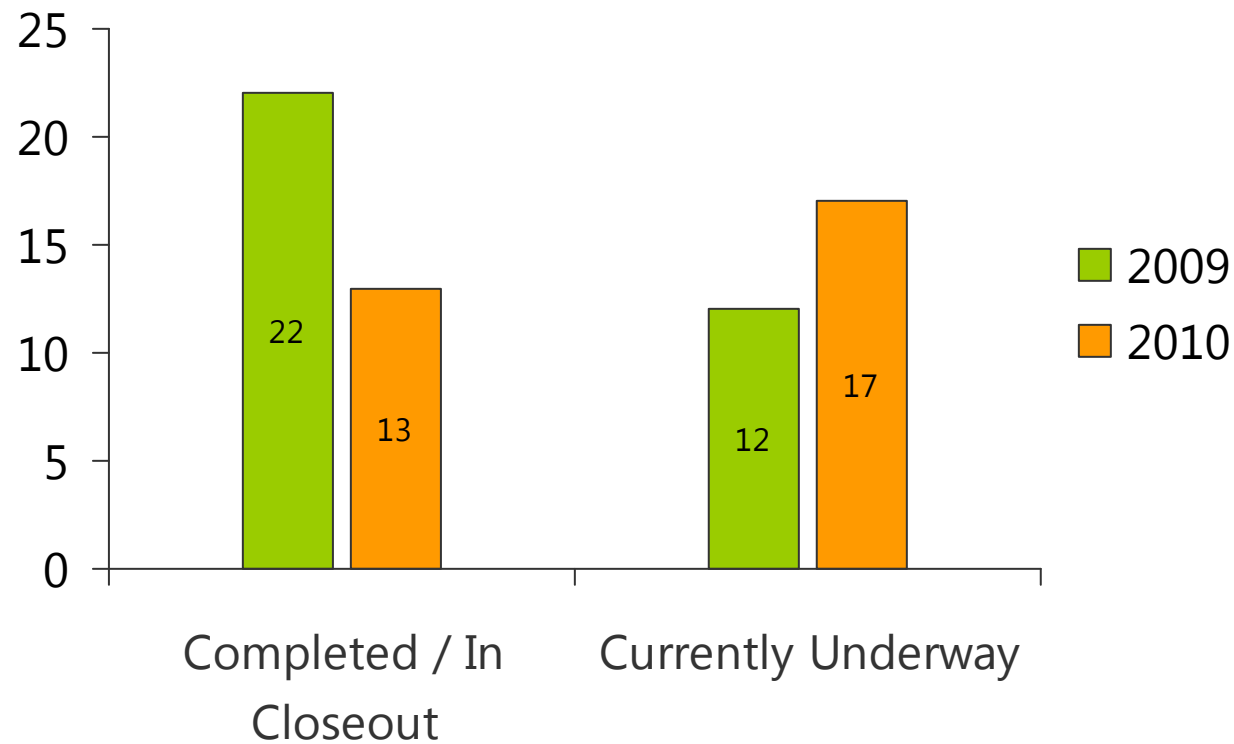


ANNUAL REVIEW

2010

Major Capital Projects - January 2011

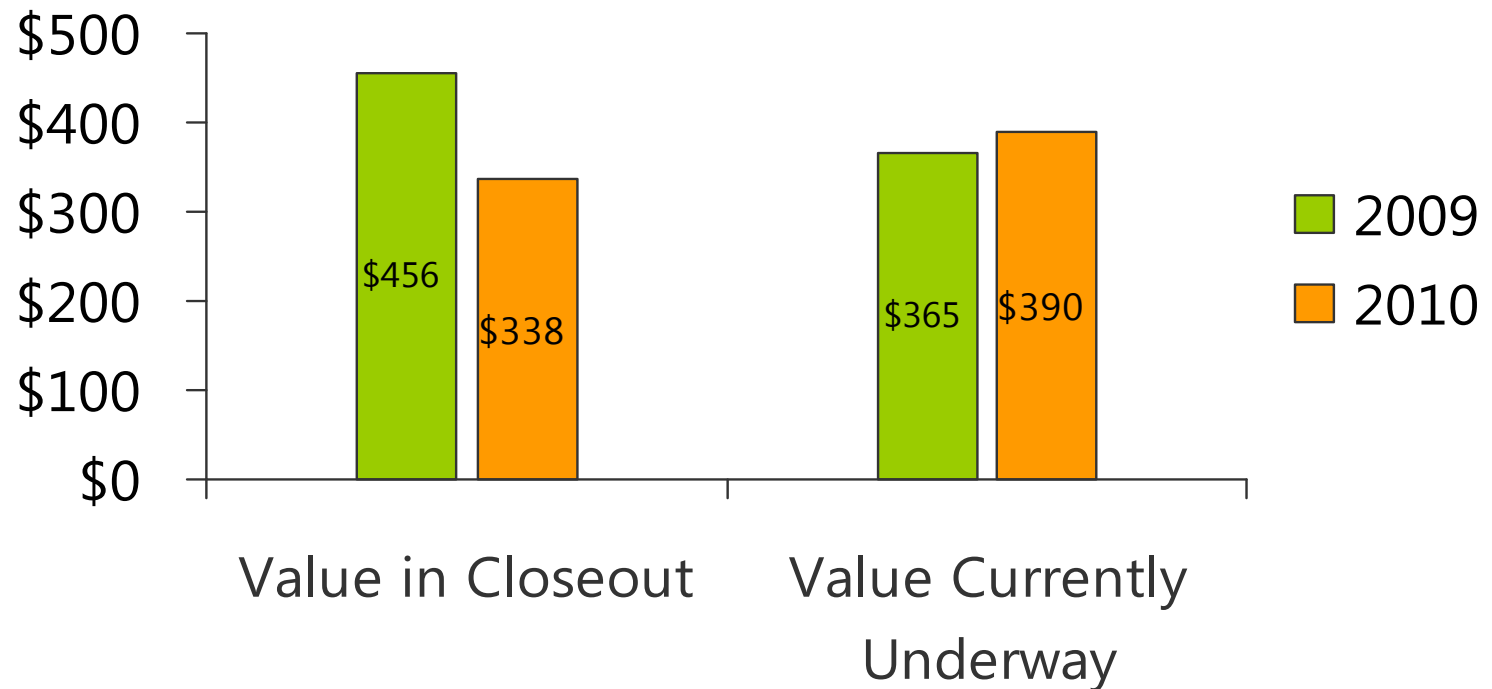
Total Active Projects, breakdown by status



Major Capital Projects - January 2011

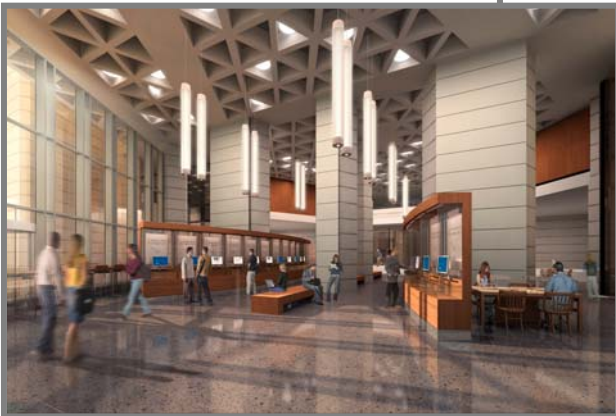
Aggregate Total Project Costs \$728M, breakdown by value

Project Costs (\$M)



Major Capital Projects - January 2011

Samples of projects underway



Civil Engineering Design Studio – Mining Building

Construction Manager: Urbacon
Architect: Baird Sampson Neuert

CURRENT



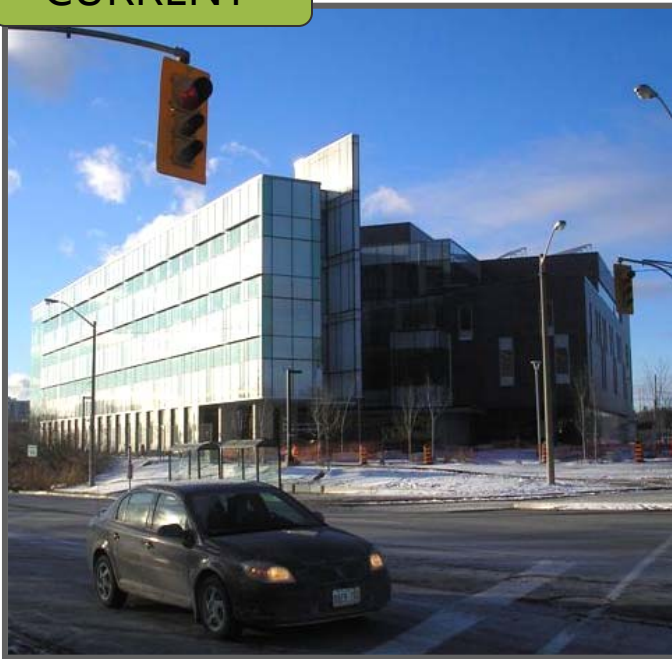
SPRING 2011

UTSC Instructional Centre

Integrated Team:

Ellis Don / Diamond & Schmitt

CURRENT



SPRING 2011

UTM Instructional Centre

Integrated Team:
Eastern / Shore Tilbe Irwin & Partners

CURRENT

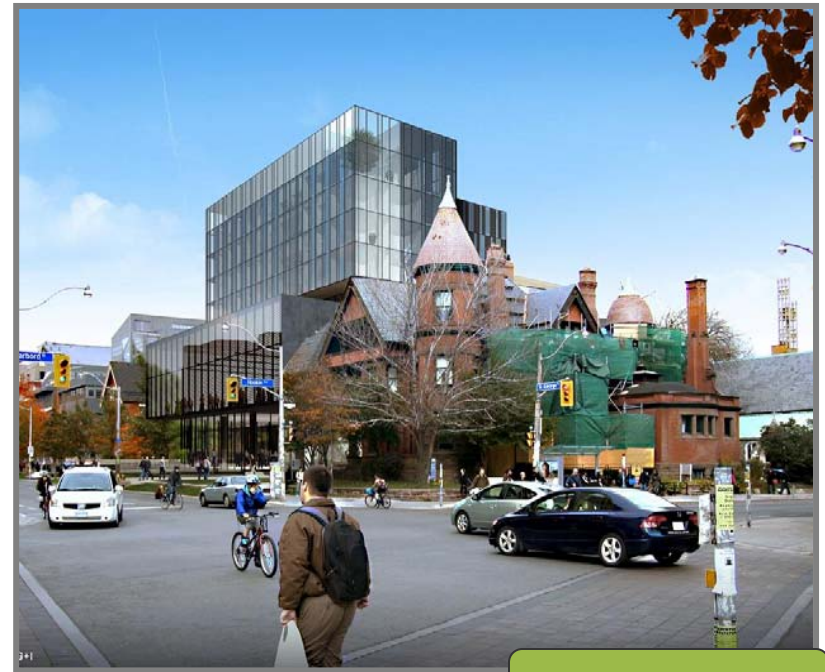
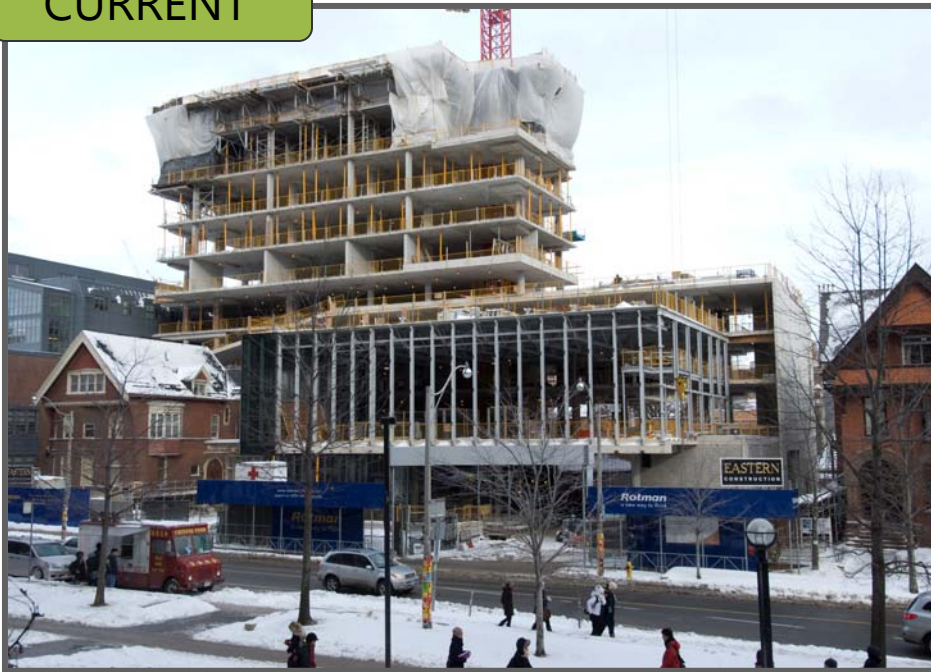


SPRING 2011

New addition to the Rotman Building

Construction Manager: Eastern
Architect: KPMB

CURRENT



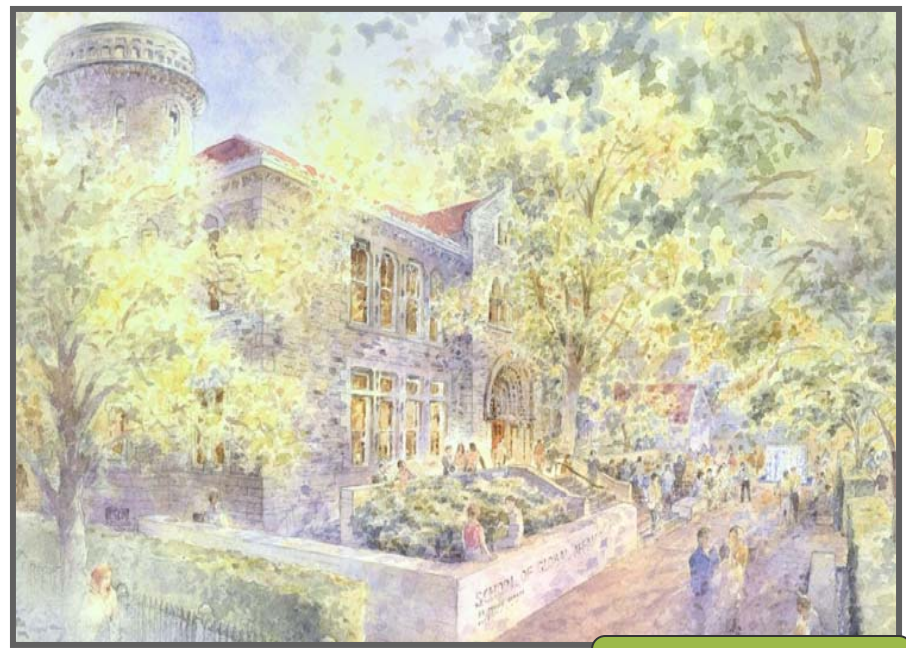
AUGUST 2011

School of Global Affairs, 315 Bloor Street West

Construction Manager: Govan Brown

Architect: KPMB

CURRENT



SUMMER 2011

Robarts Library Renovations

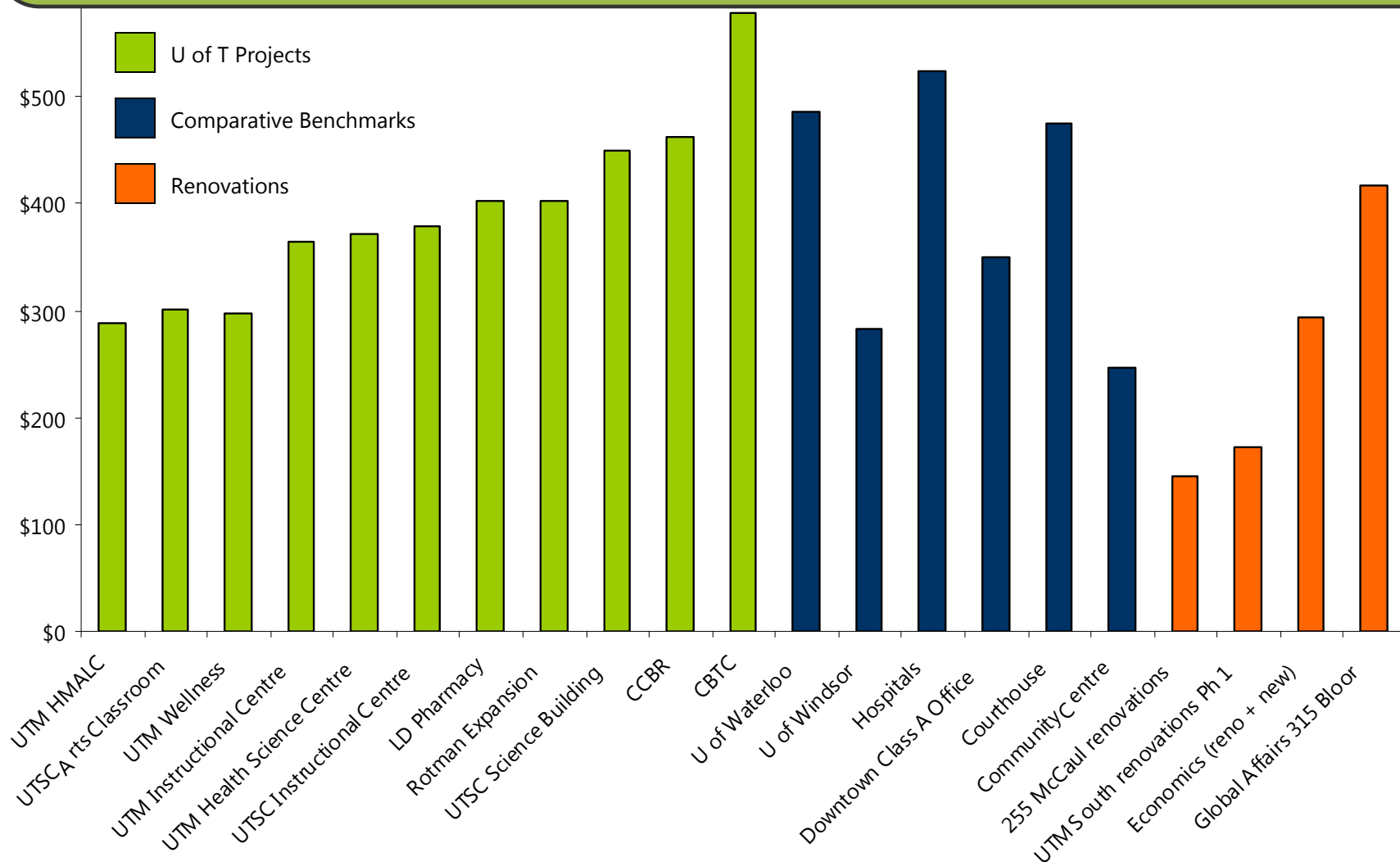
Construction Manager: Govan Brown
Architect: Diamond & Schmitt

CURRENT



2011

Selected Project Hard Construction Costs \$/sq ft (escalated)



Property Acquisition Report

Beginning January 1, 2008

Ending December 31, 2010

Address	Price per Buildable (Potential)	Market Comparable \$ / Bld
245 College Street	\$31	\$29
44/46 Harbord Street	\$51	\$62
48 Harbord Street	\$61	\$62
HARBORD COMBINED	\$55	\$62
90 Wellesley Street W	\$62	\$68
162 St. George Street	\$75	\$73
172 St. George Street	\$292	\$338
McLaughlin Planetarium	\$91	\$94
58 Spadina Avenue	\$98	\$338
704 Spadina Avenue	\$64	\$73