

Agenda:

1. Project Background
2. Occupant Group(s) & Space Program
3. Project Purpose & Value
4. Design & Municipal Approvals



Image 1 – View of Reception

Project Background

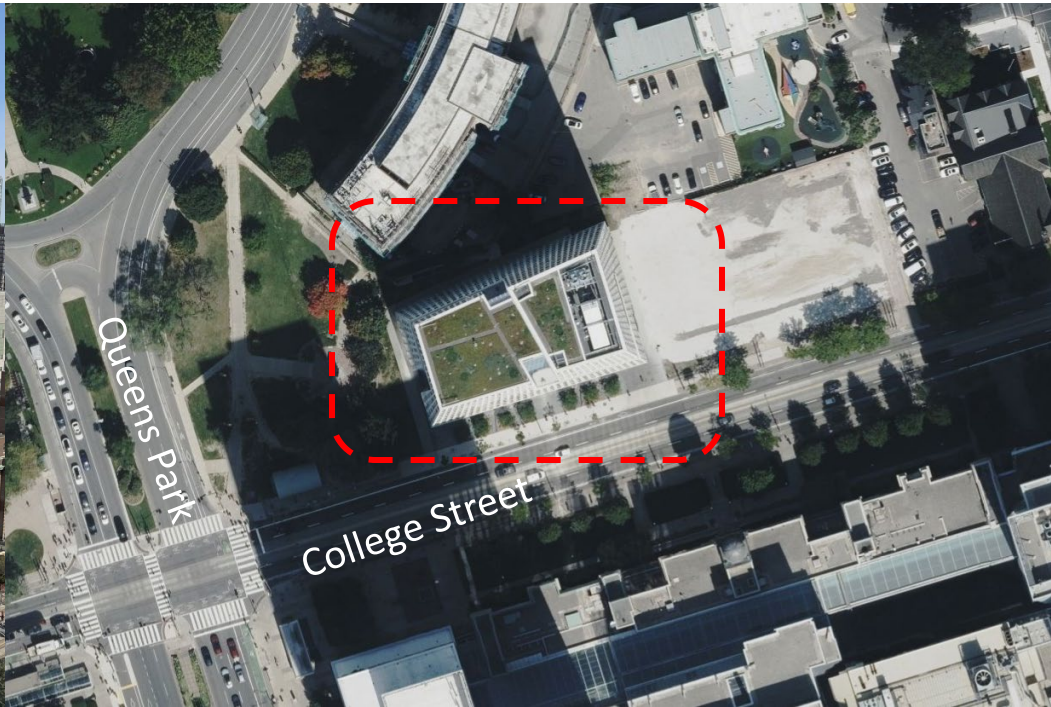
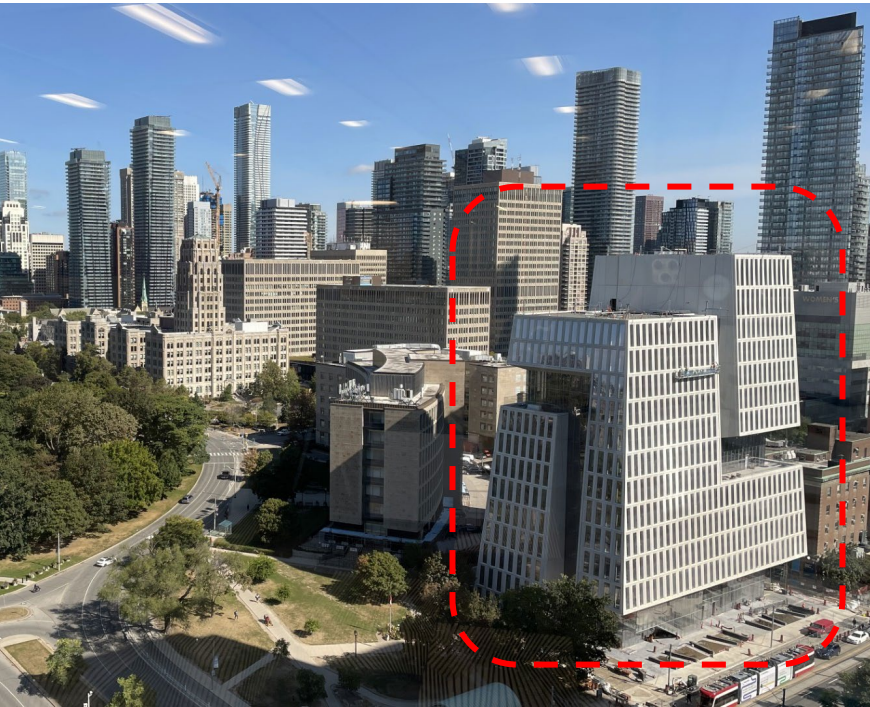
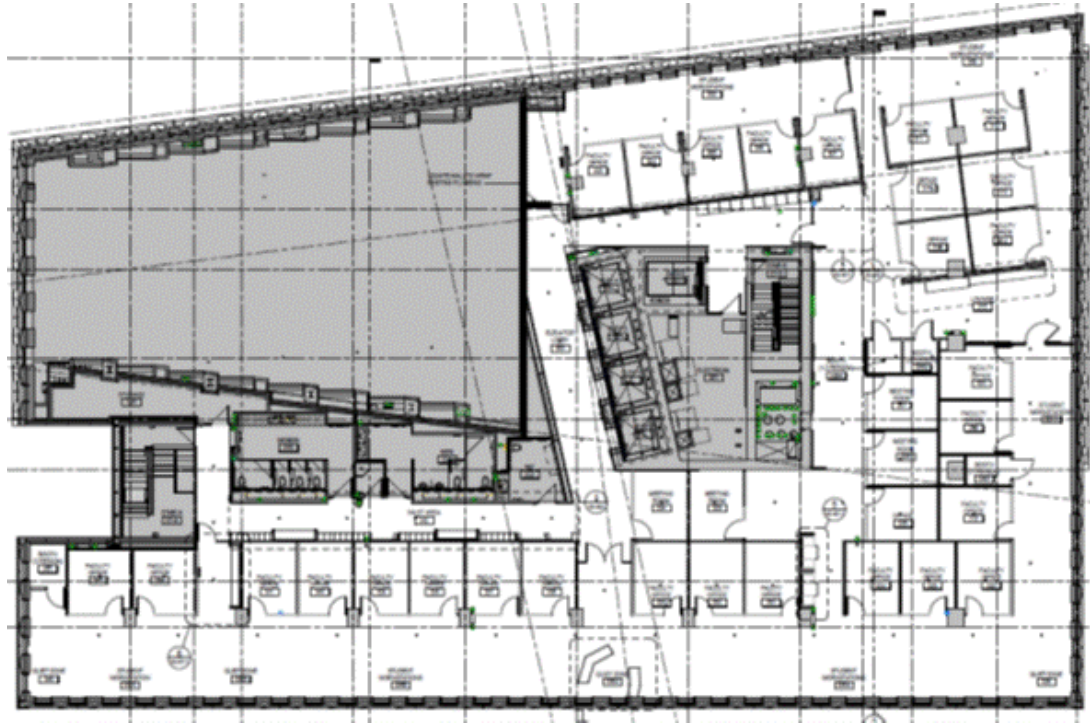


Image 2 – Ariel photo of SRIC

Image 3 – Site Context

Occupant Groups & Space Program



<u>Proposed NASM</u>	
Research Laboratories & Support Space:	328 sm
Academic Offices:	473 sm
Research Office / Project Space:	17 sm
Graduate Student Space:	250 sm
<u>Office Support Space:</u>	<u>520 sm</u>
Total NASM:	1,588 sm
Proposed GSM:	3,486 sm (@2.2)

Image 4 – Plan of the Third Floor at Schwartz Reisman Innovation Campus

Design & Municipal Approvals



Image 5 – View of Conference Room

Project Purpose & Value



Image 6 – View of Social Lounge

The End