

UTSC Campus Affairs Committee

Design and Construction Management

February 5, 2025

Presented by:

Jennifer Adams Peffer
UTSC Campus Architect and Director of
Architecture, Planning and Project
Development

Agenda

1.0 DCM Overview

- Mandate
- Committee Oversight and Representation
- Campus Wide Space Plan
- Space Inventory & COU
- Signage and Wayfinding
- Team Structure

2.0 2018-2024 Projects in Review

- Project Mapping
- Data Analysis
- Approach & Focus

3.0 What's next



Design and Construction Management

Through regular functional campus planning, and in close reference to Campus Strategic, Academic and Physical Master Plans, DCM envisions and creates campus spaces of quality, functionality, longevity, and innovation.

Always with an eye to data informed, sustainable, accessible and wellness supporting practices, our team of professionals work collaboratively with clients and across disciplinary units to design and implement the best possible solution for each project and its supporting infrastructure within funds available and with consideration of the larger campus.

Membership:

- Campus Design & Development Committee
- Operational & Progress Review Group
- UTSC Space Planning Committee
- Accessibility Committee
- Student Study Space Committee
- Campus Leadership Forum
- Tri-Campus Accessibility Design Guidelines Committee

Chair/Co-Chair:

- UTSC Indigenous Place Making Sub-Committee
- Contractor Safety Coordination Group
- UTSC Technical Design Review Committee



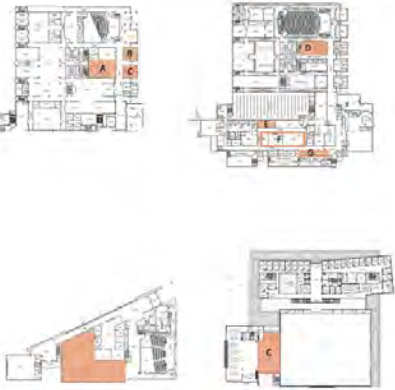
Preamble

As the University of Toronto Scarborough continues on the path of inspiring inclusive excellence, we are always mindful of the fact that our success has been made possible by the exceptional opportunity given to us by our host Indigenous communities to operate on their lands. We are grateful for that generosity and cherish our continuing partnerships with them. We remain resolute in our commitment to addressing the calls to action of the Truth and Reconciliation Commission. We also strive to realize the recommendations from the *Answering the Call – Wecheehetowin: Report of the Steering Committee for the University of Toronto's Response to the Truth and Reconciliation Commission of Canada*, and UTSC's Strategic Plan, *Inspiring Inclusive Excellence: A Strategic Vision for the University of Toronto Scarborough (2020-2025)*, with the guidance and support of local Indigenous communities.

Campus Wide Space Plan

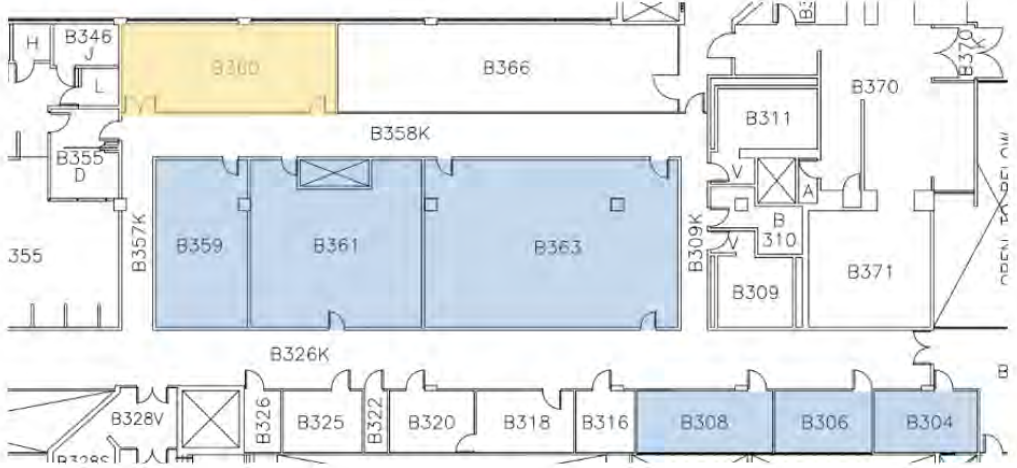
SPACE PLAN 3

PART 1: SAM IBRAHIM BUILDING SECONDARY EFFECTS

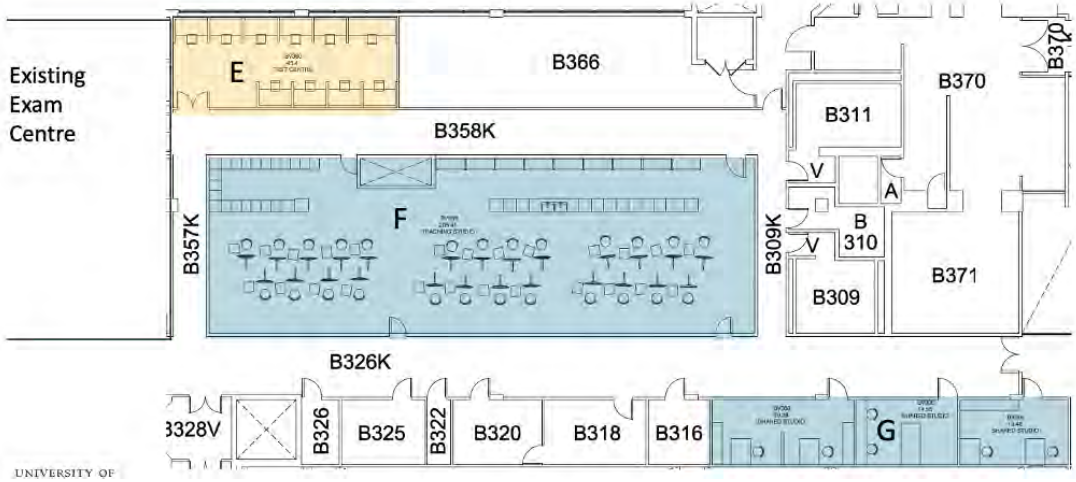


UTSC SPACE PLAN 3 -- PART 1 | FINAL DRAFT April 03, 2024

Bladen Wing 3 Spaces E, F, G Existing



Bladen Wing 3 Spaces E, F, G Test Fit



Space Inventory and COU Analysis and Reporting

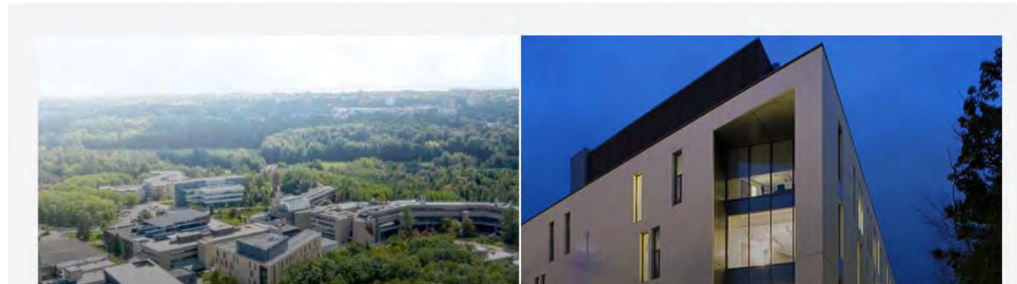


DESIGN AND CONSTRUCTION...

UTSC Space Inventory

This site contains space allocation information for UTSC Academic and Administrative Departments.

Share



- Home
- Space Allocation Report...
- UTSC Building Plans
- Central Common Space,...
- UTSC Space Allocation ...
- Recycle bin

Return to classic SharePoint

Design and Construction Management

Building ...	Room De...	Shar...	Shared...	Shared ...	Shared ...	Occupan...	Position
Arts & Admin Bul...	Admin Office Single	None	100	1	11.2	J. Adams-Peffer	Campus Architect...
Instructional Cent...	Cage 2 - Storage	None	100	0	15.06	N/A	N/A
Science Wing (S-...	Entry	None	100	0	6.2	N/A	N/A
Science Wing (S-...	Admin Office Single	None	100	1	9.27	A. McLeod	Assistant Director,...
Science Wing (S-...	Admin Office Single	None	100	1	9.12	A. Bernaus	Assistant Director,...
Science Wing (S-...	Small Meeting Ro...	None	100	2	3.32	N/A	N/A
Science Wing (S-...	Small Meeting Ro...	None	100	2	9.99	N/A	N/A
Science Wing (S-...	Copy/Print	None	100	0	7.45	N/A	N/A
Science Wing (S-...	Meeting Room	None	100	8	13.83	N/A	N/A
Science Wing (S-...	Kitchenette	None	100	3	12.06	N/A	N/A
Science Wing (S-...	Admin Office Multi	None	100	5	30.56	TBD, C. Chu, L. Ka...	TBD Senior Projec...
Science Wing (S-...	Admin Office Multi	None	100	5	28.44	S. Chan, K. Nagan...	Business Officer, ...
Science Wing (S-...	Closet	None	100	0	0.45	N/A	N/A
Science Wing (S-...	Storage and Admi...	None	100	3	23.16	DCM casual co-o...	Casual co-op staff

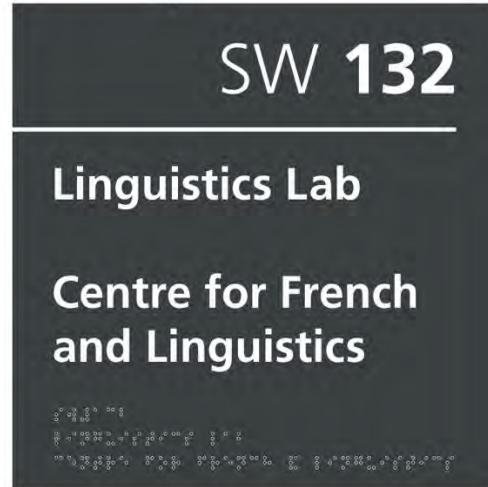
Signage and Wayfinding

University of Toronto Room Signs

Type 1

Standard Room (ie. classrooms, labs, common rooms and meeting rooms)

9" x 9" Room Sign



9" x 9" x 1/4" Novacryl with Raised Room Number
 Background: Painted PMS Cool Grey 11C
 Copy & Accent Line: White
 Braille: to match background colour

10.3.1 AODA and Accessibility Guidelines

The Accessibility for Ontarians with Disabilities Act provides guidelines for interior signage that have a significant impact on interior signage. The act may be viewed, printed or downloaded here: <https://www.ontario.ca/laws/statute/05a11>
 General Information regarding accessibility laws may be found here: <https://www.ontario.ca/page/accessibility-laws>.

Among the key points:
 Ontario Building Code Signs incorporating the International Symbol of Accessibility (ISA) and such other graphic, tactile, or written directions as needed to indicate clearly the type of facility available, shall be installed where a washroom, elevator, telephone, parking area, or means of egress is required to accommodate disabled persons.

Canadian Standards: Where facilities or their elements are required to be identified as accessible, the International Symbol of Access (ISA) shall be used.

Signage – Tactile Signs - Ontario Building Code

- wall-mounted signs shall be located between 1200 - 1500 mm above the floor
- (City of Toronto) located between 1370 - 1525 mm above the floor
- If used to identify a door, be mounted on the wall beside the door
- Have the leading vertical edge 150 ± 10 mm from the door jamb
- Be mounted with the horizontal centerline 1500 ± 25 mm from the floor
- Clear wall area around the sign at least 75 mm wide
- Allow approach to the sign to within 100 mm without encountering protruding objects, including a door swing

The Building Code requires that characters, symbols and pictograms on tactile signs be located not more than 1500 mm AFF

Characters, symbols and pictograms on tactile signs be located not more than 1500 mm AFF

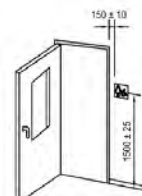
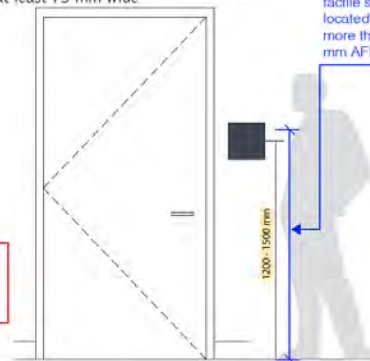


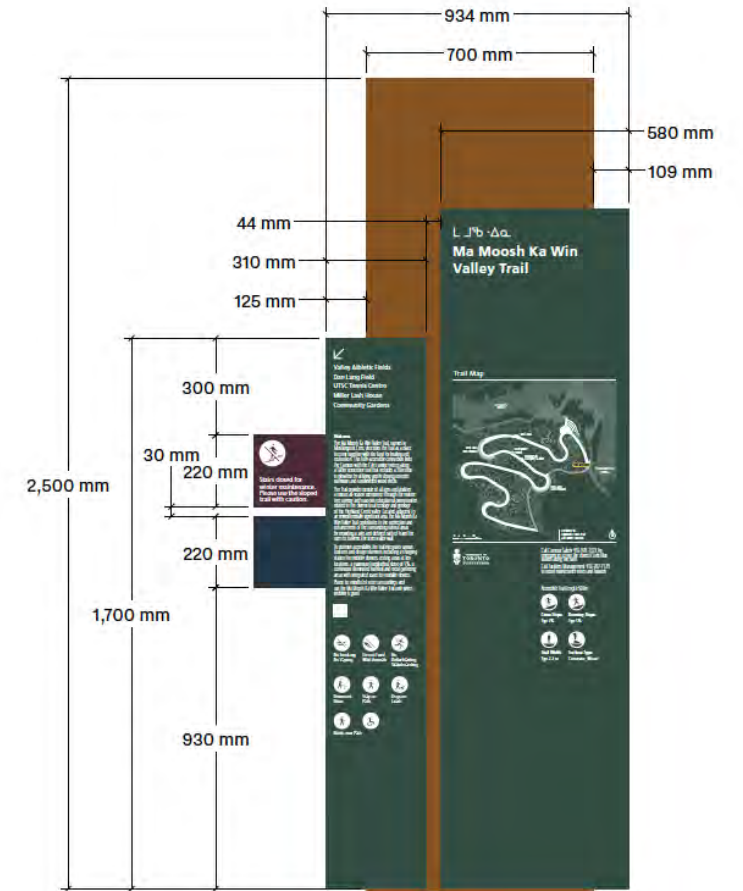
Figure 4.4.6.3: Tactile Signage



Images on left provided in 'Facility Accessibility Design Standard Last Updated - June 9, 2023'

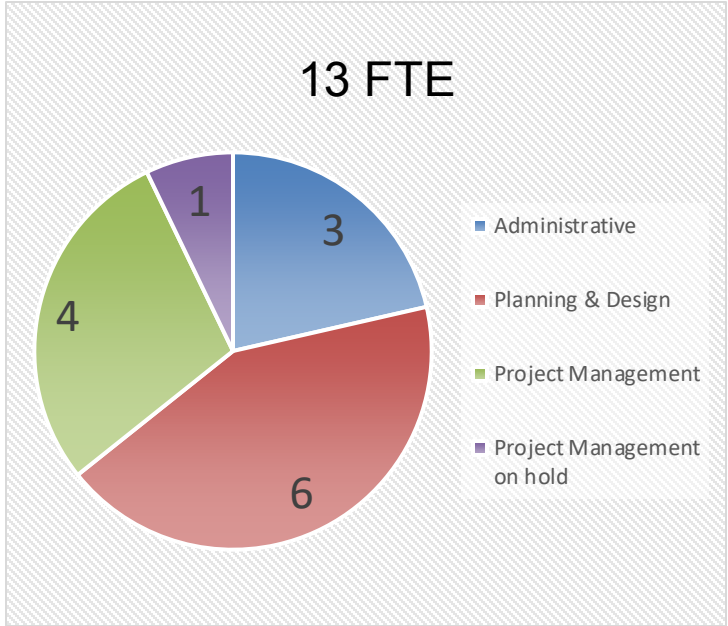
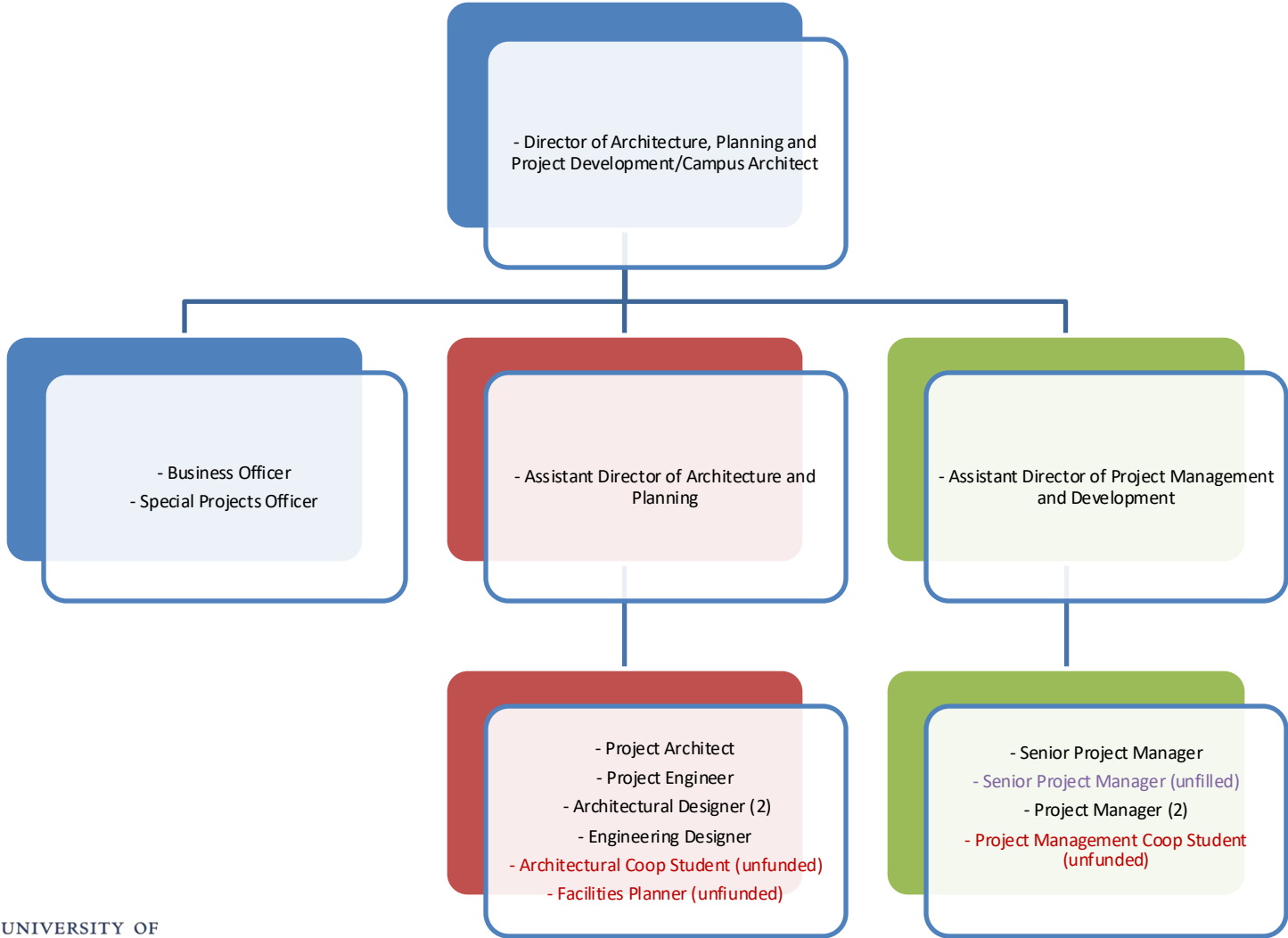


If you have any questions regarding this document or U of T's visual identity, please contact fo@utoronto.ca



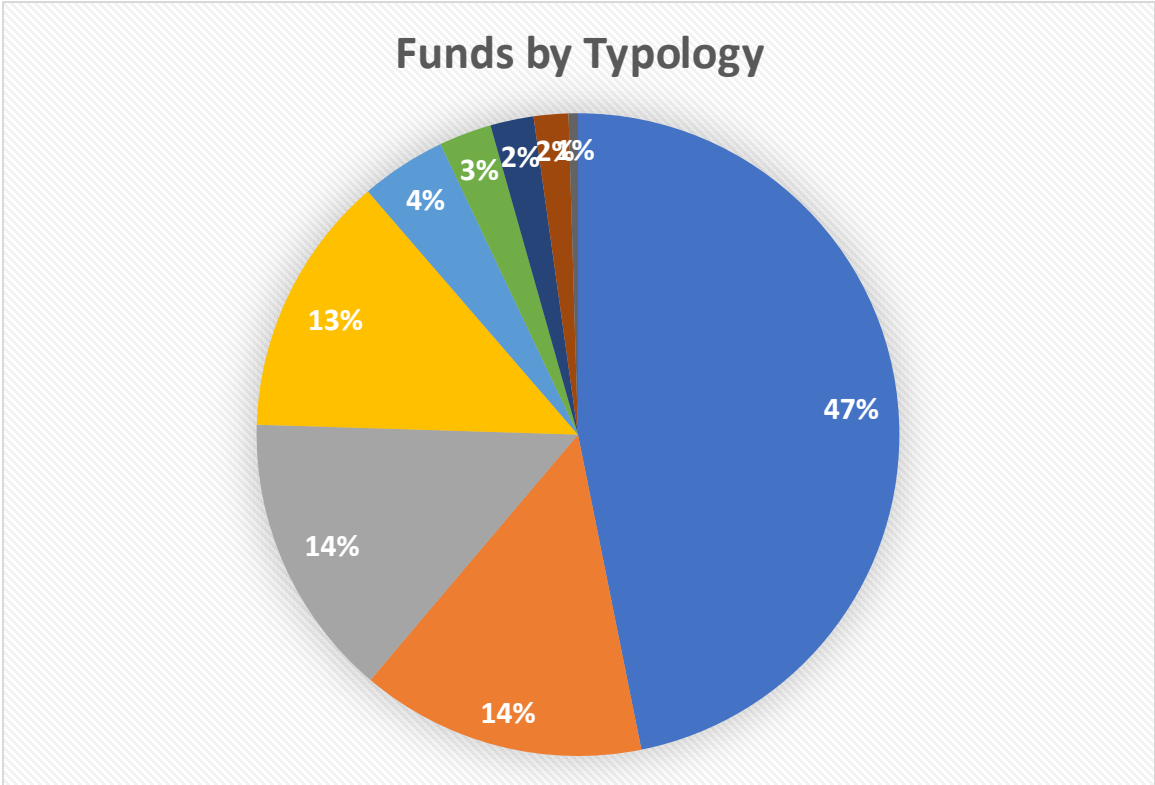
TRAILHEAD SIGNAGE
 A1-024
 SCALE 1:20

DCM Team



Renovated Spaces 2018 – 2024 (CDD only)

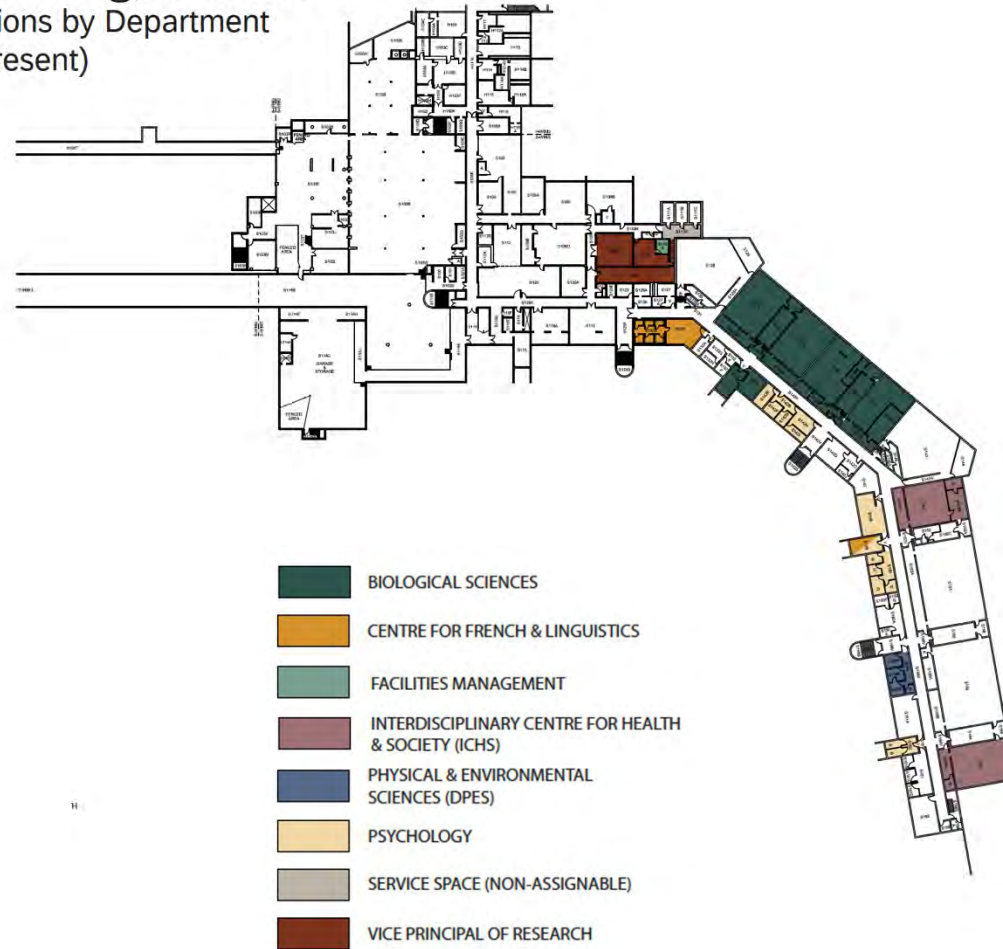
Typology	Total	%
Research Labs	\$ 28,693,408.33	47%
Academic Offices	\$ 8,783,732.22	14%
Student Service Space	\$ 8,768,623.35	14%
Teaching Labs	\$ 8,067,340.43	13%
Classroom	\$ 2,636,664.68	4%
Infrastructure	\$ 1,620,033.75	3%
Administrative Office	\$ 1,334,646.01	2%
Common Space	\$ 1,066,923.49	2%
Student Space	\$ 288,093.43	1%
Grand Total	\$ 61,259,465.69	



Project and Portfolio Management



Science Wing, 1st Floor
Renovations by Department
(2017-Present)

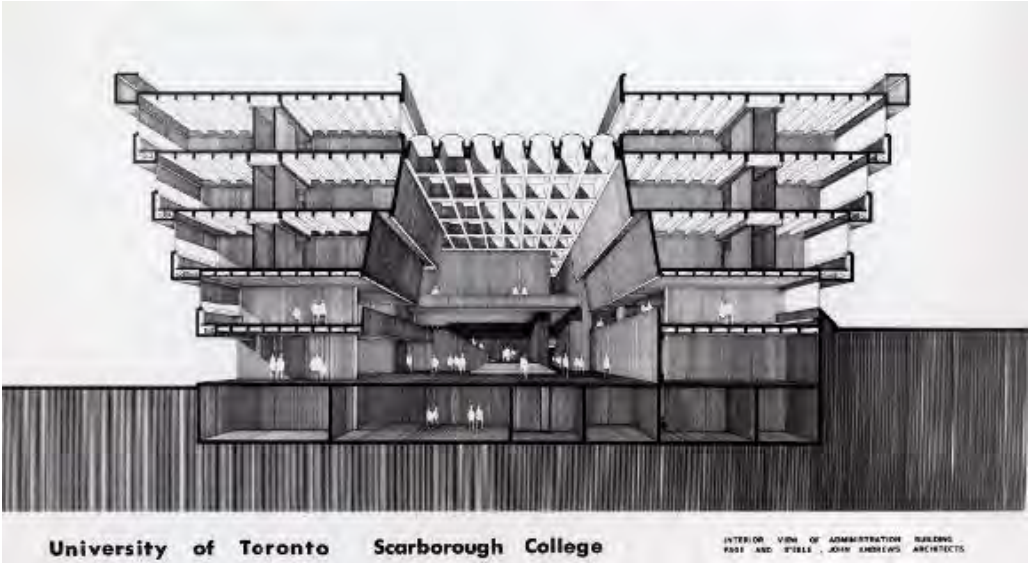


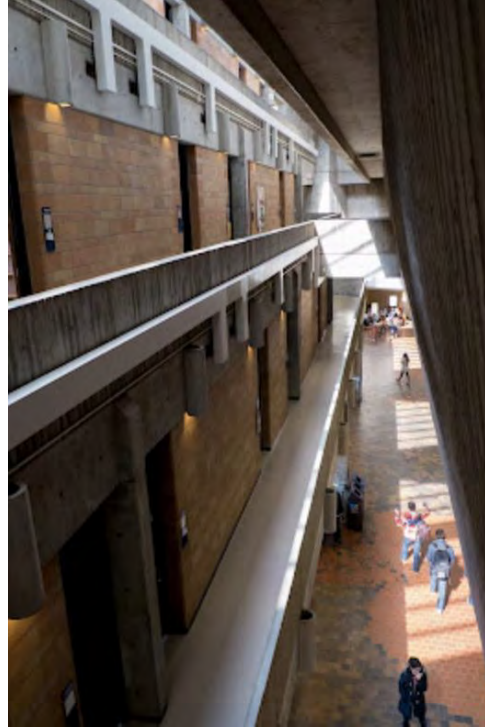
Mapping & adoption of Portfolio and Project Management (PPMT) digital tool has allowed for:

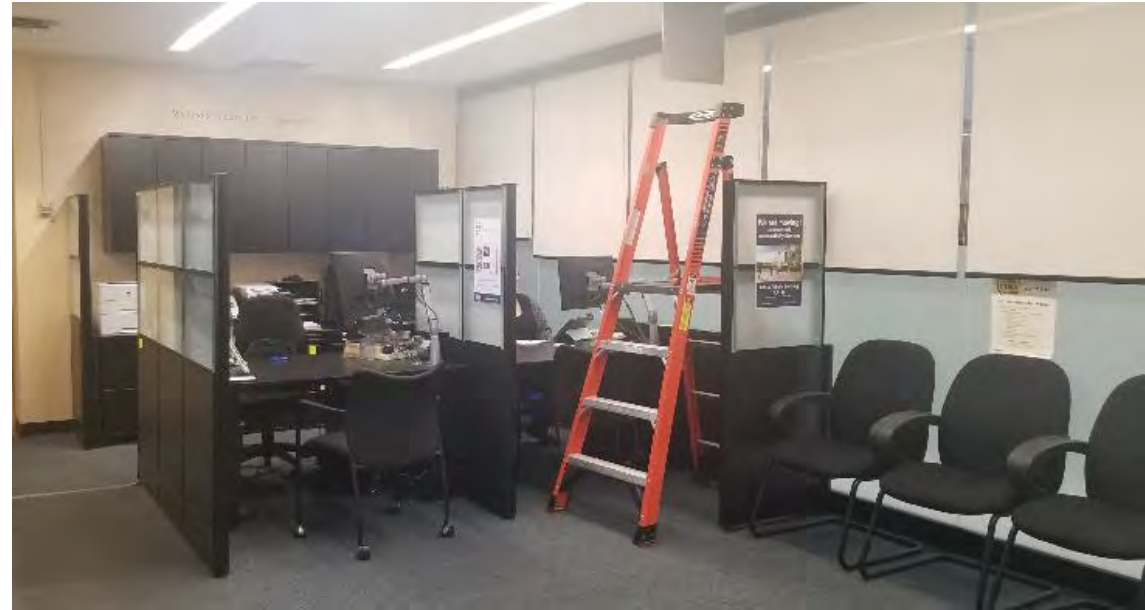
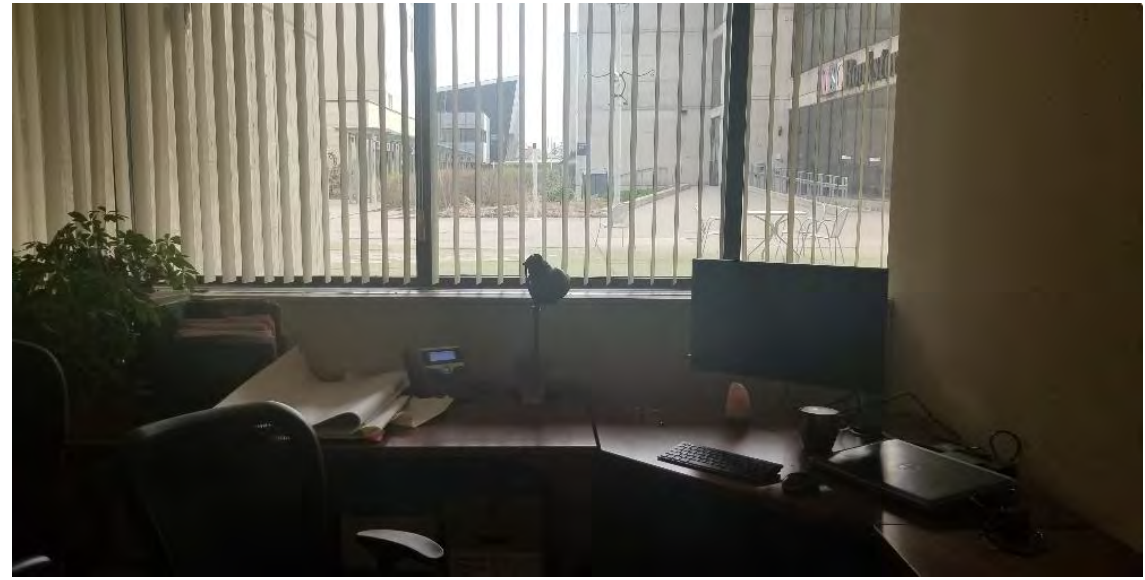
1. Clear understanding of areas that may be in-need of renovation
2. data informed costing, scheduling, staffing

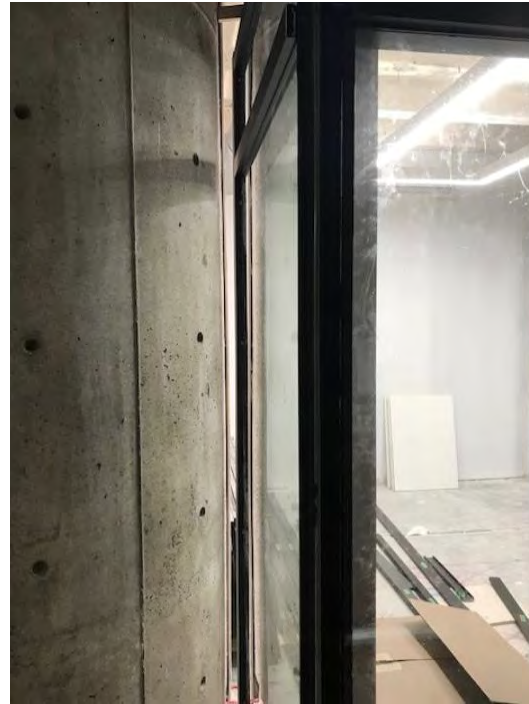


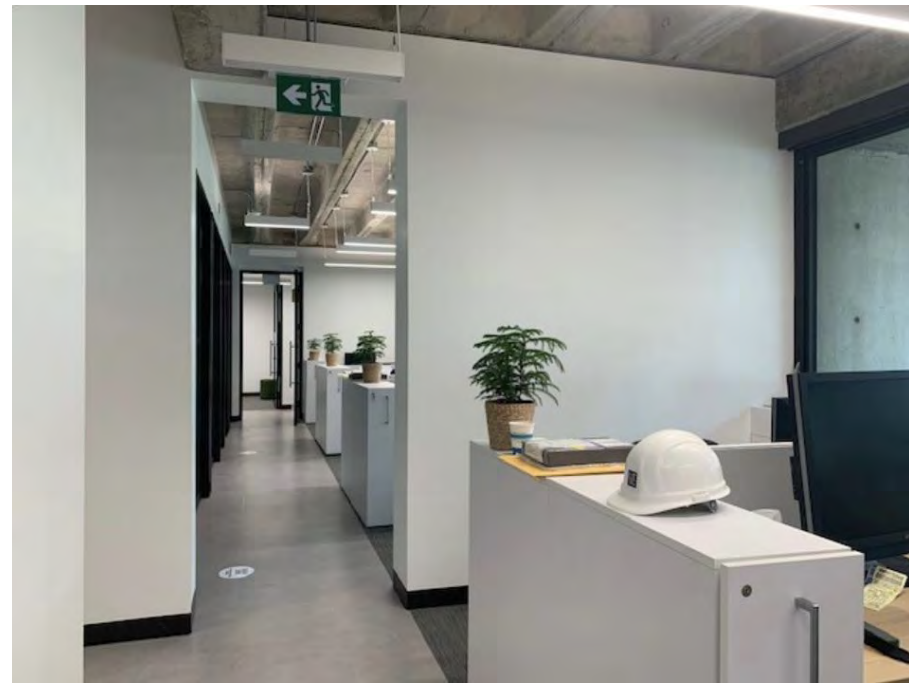
Heritage Approach





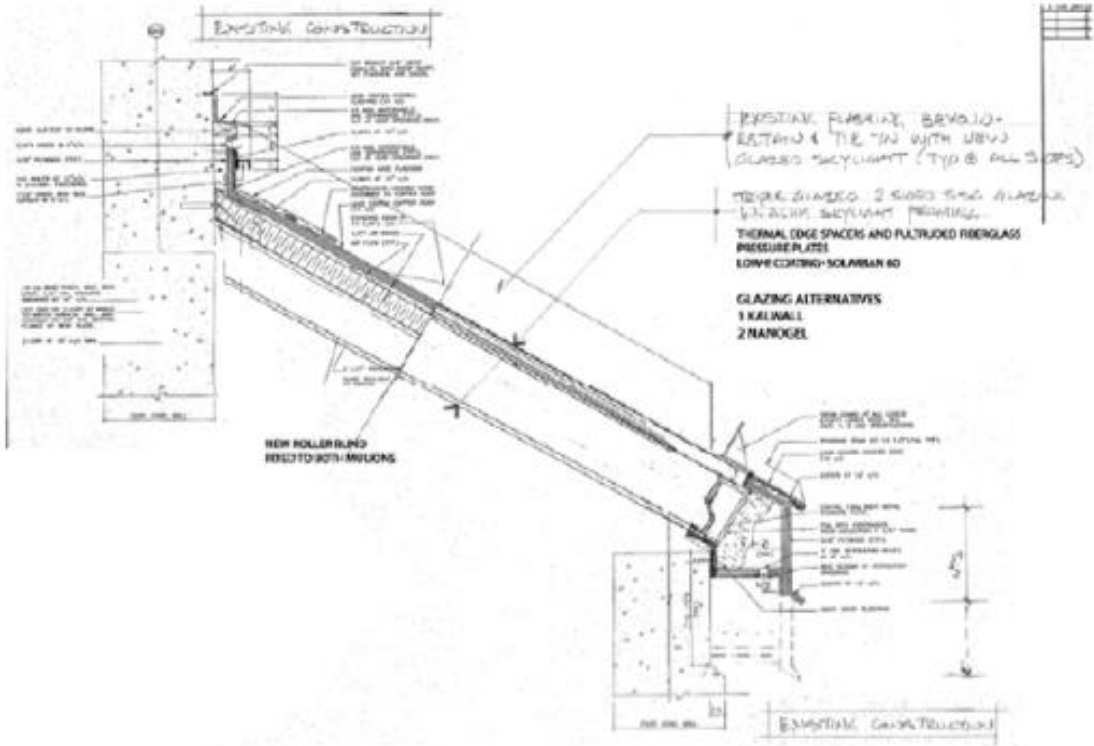


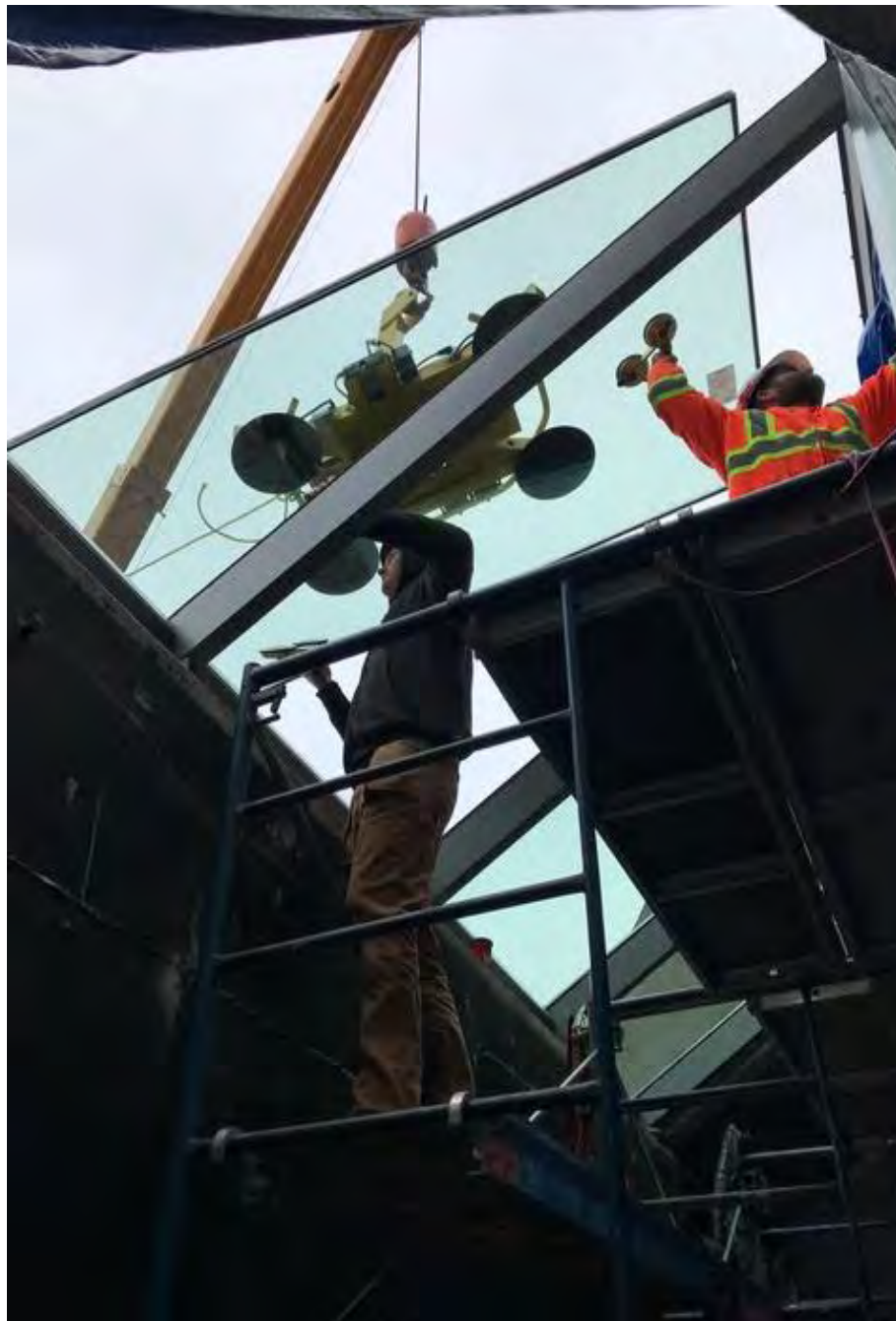




Heritage Approach + Human Centered







UNIVERSITY OF
TORONTO
SCARBOROUGH





Heritage Approach + Human Centered + Pedagogy Forward

EDUCATION

COLLEGES

A Satellite Built for TV

It seems fitting that the newest addition to the fast-growing University of Toronto—home base for Canada's baffling communications theorist Marshall McLuhan—is probably the most television-conscious college in the world. Fully 45% of the instruction at suburban Toronto's Scarborough College is transmitted throughout its single twisting concrete building (see color pages) by television. The college was literally built around its TV facilities.

Scarborough, which opened in 1965, is one of two "satellite" campuses of the University of Toronto created to handle an enrollment expansion from 19,300

The college employs eleven fulltime television specialists, from producers to electronics repairmen, to man its studios. Most professors give two lectures a week on television. Dean Beckel sees an advantage in the ability to add graphics and photographic illustrations to the lectures of what he calls the "semi-live" professors. Television is not suitable, he concedes, for such subjects as English composition, French recitation, math drills and problem-solving in the sciences. But otherwise, he says, "you at least get no worse results than by face-to-face instruction."

Like Hill Towns. The college is built on 202 acres, most of it in a ravine studded with century-old hemlock, pine, maple and beech trees. Architect John

Private gifts to the nation's 50 best-known colleges and universities have jumped at least 50% over 1960-61's \$343,621,000.

That looks like pennies compared to what lies ahead. The University of Chicago is seeking \$360 million over ten years, and even though the campaign started only in October 1965, Chicago already has \$80 million in the pot. Columbia is after \$200 million in three years, Northwestern \$180 million in five, Duke hopes to raise \$100 million in less than four years, while Yale and Long Island University are pursuing the same amount in a decade. In 1961, the University of Southern California set out to pick up \$106 million over 20 years, wound up with \$117 million in just five, so it promptly launched a new \$34 million drive.

Thinking Big. Even the small schools are thinking big. California's six Claremont Colleges, with just 4,100 students, have a 1972 target of \$86 million, and \$35 million is already in hand. Williams last October completed one drive with \$17.6 million, now hopes to reach \$25.4 million by 1970. Connecticut's Wesleyan University, although blessed with an impressive \$150 million endowment, is pursuing \$38 million for expansion.

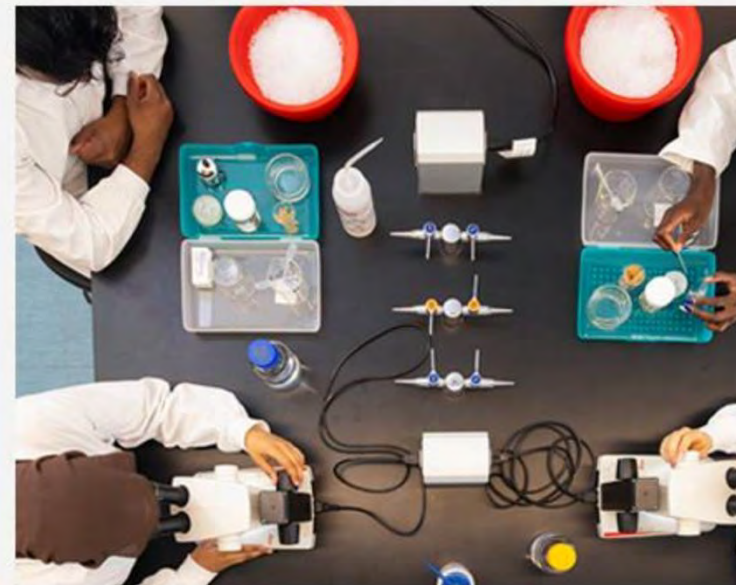
How do they find such huge sums? For advice, most colleges turn to professional fund-raising firms, the best of which already are too busy to take on any more schools this year. The pros candidly tell a college what it can realistically hope to raise, usually scale down inflated goals, since it is psychological suicide for a drive to fail. Before mapping out a campaign, Manhattan's John Price Jones Co., Inc., a firm of fund-raising consultants, prepares a detailed statement—sometimes 300 pages long—of the college's specific needs and underlying educational philosophy, a "case" that can be broken down to stir the interest of specific donors. "If



SCIENCE LAB AT SCARBOROUGH
Flexibility in a tube.

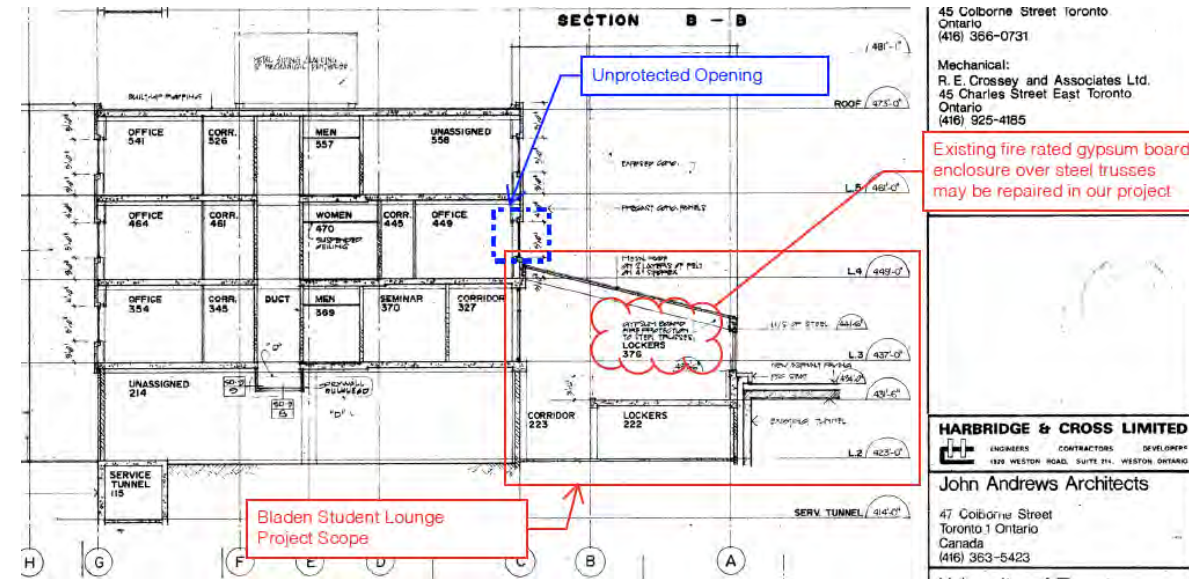
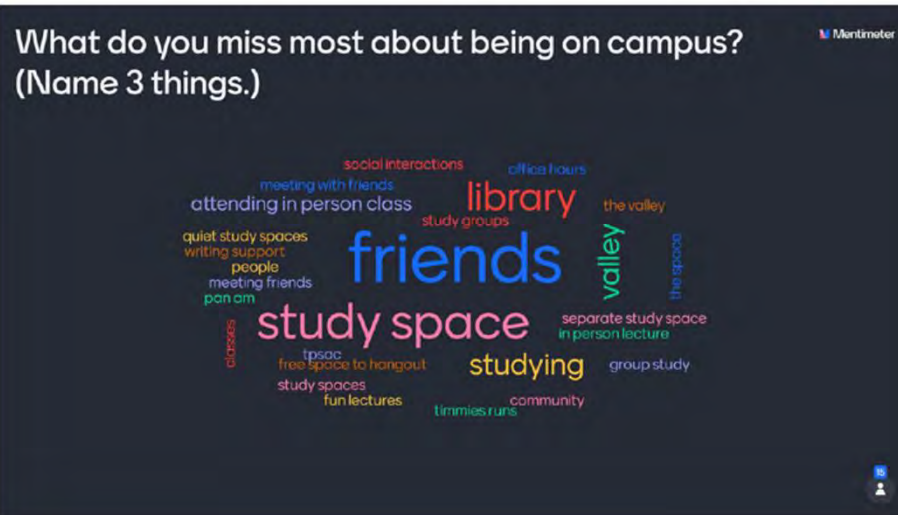
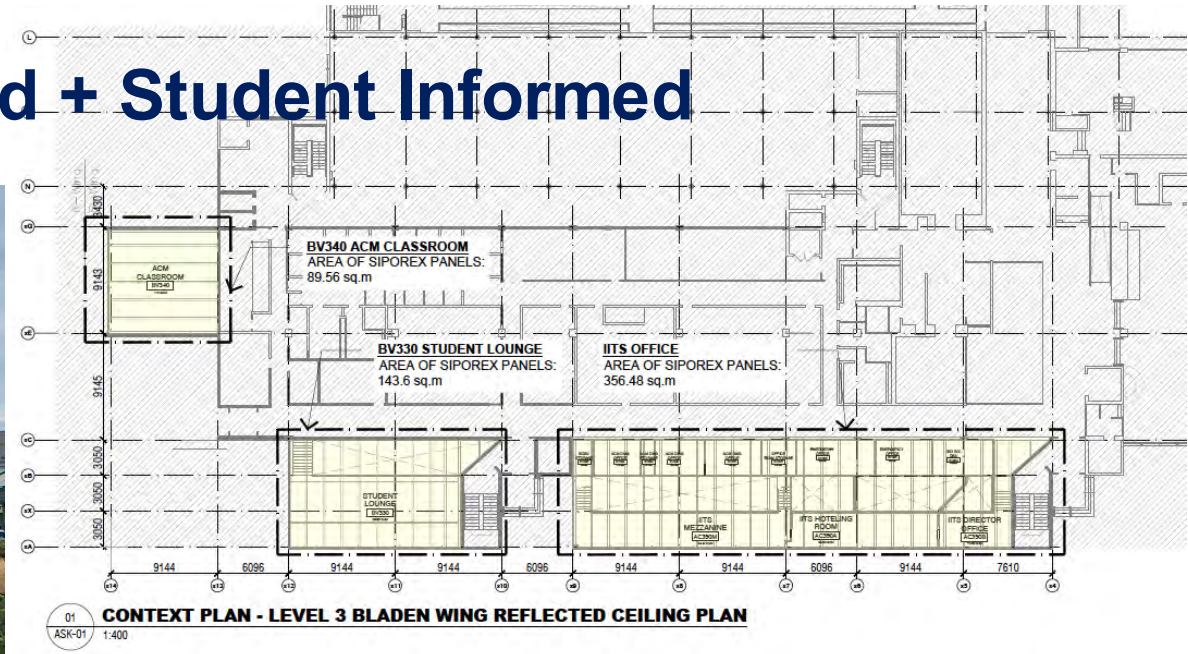
Time Magazine, 1967

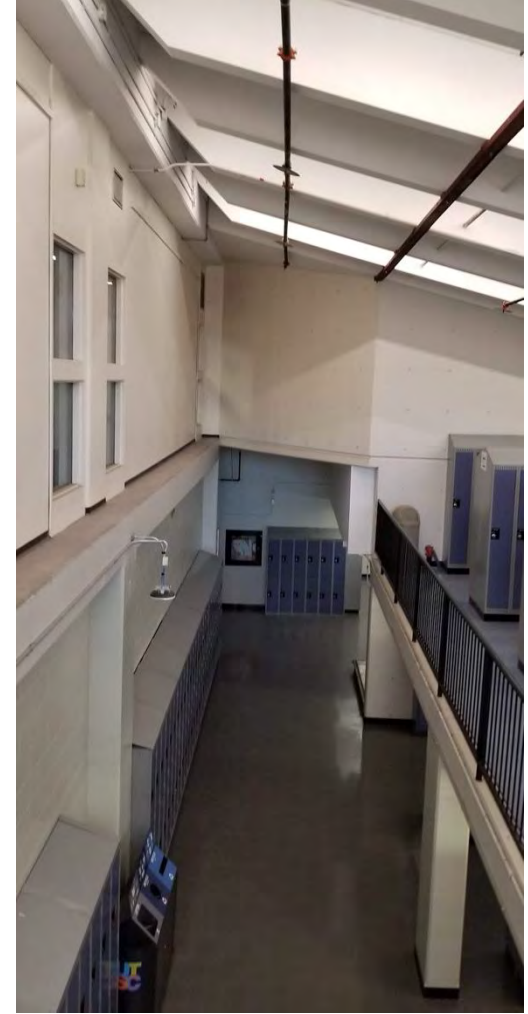


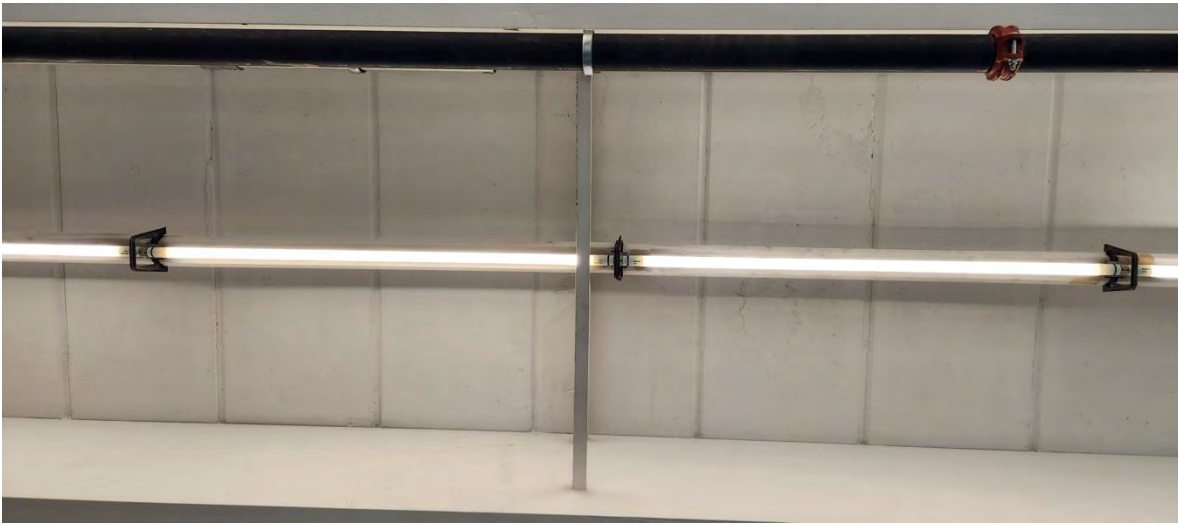




Heritage Approach + Human Centered + Student Informed







All1102 771843 NBS PUBLICATIONS

NBSIR 87-3670

A Review of Autoclaved Aerated Concrete Products


Robert G. Mathey
Walter J. Rossler, Jr.

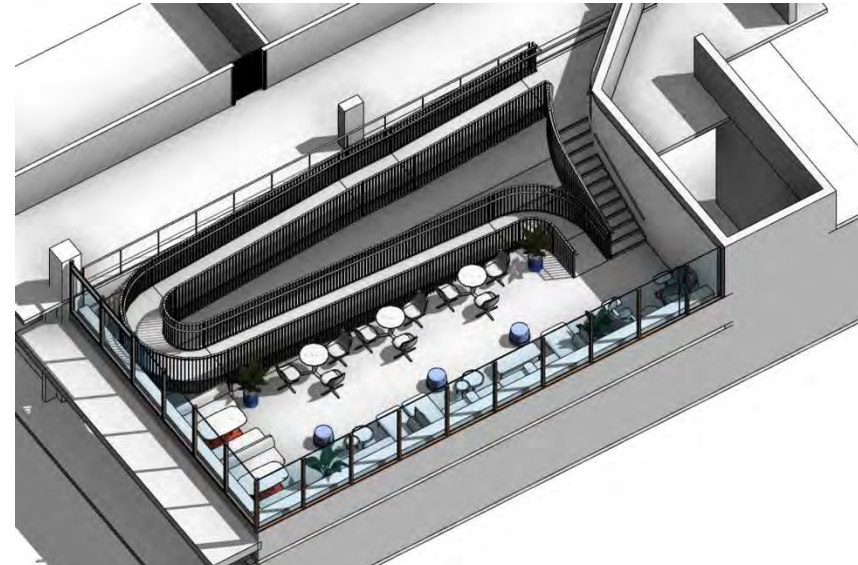
U.S. DEPARTMENT OF COMMERCE
National Bureau of Standards
National Engineering Laboratory
Center for Building Technology
Gathersburg, MD 20899

March 1988

QC
100
.U56
#87-3670
1988
c. 2

U.S. Department of Energy
Office of Conservation and Renewable Energy
1000 Independence Ave., SW
Washington, DC 20585





Student Informed + Health & Wellbeing Focused

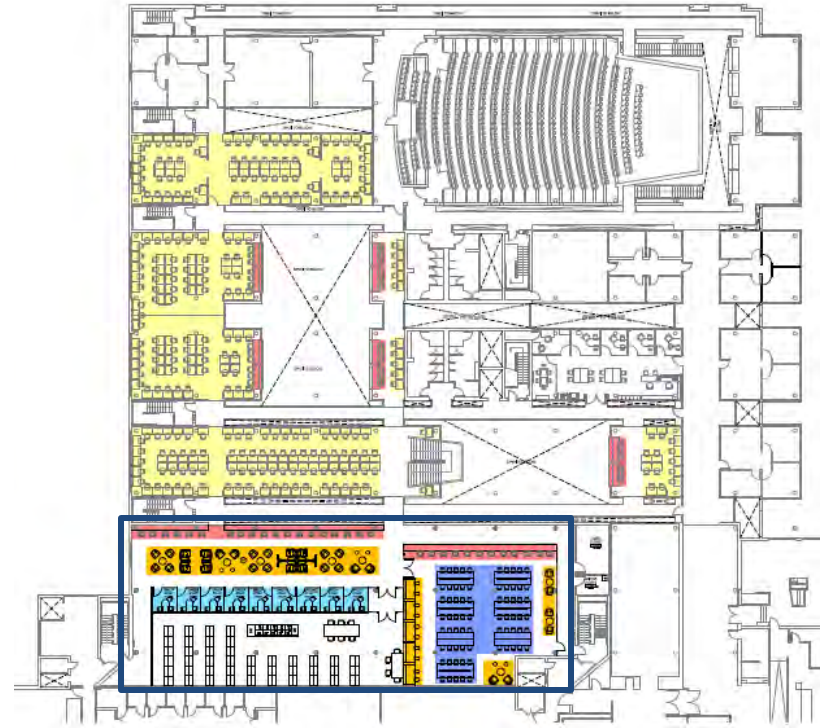


UTSC Library Student Spaces- Furniture Count

	Study Carrel	Laptop Bar	Large Study Table (total seats)	Group Study Room (total seats)	Computer Station	Lounge Seating (including booths)	Total
Level 2							
Existing	67	25		42	78 (26 no monitor)	44	256
Library Renovation Phase-1			36	24 (8 rooms x 3)		40	100
							356
Level 3							
Existing	257	30					287
Library Renovation Phase-3		31	70	27 (9 rooms x 3)		46	174
							461
Total all levels:							817



UTSC Library Level 2



UTSC Library Level 3

274
study
spaces
gain

LIBRARY RENOVATION PHASE 1 & 2



1. Large Study Tables



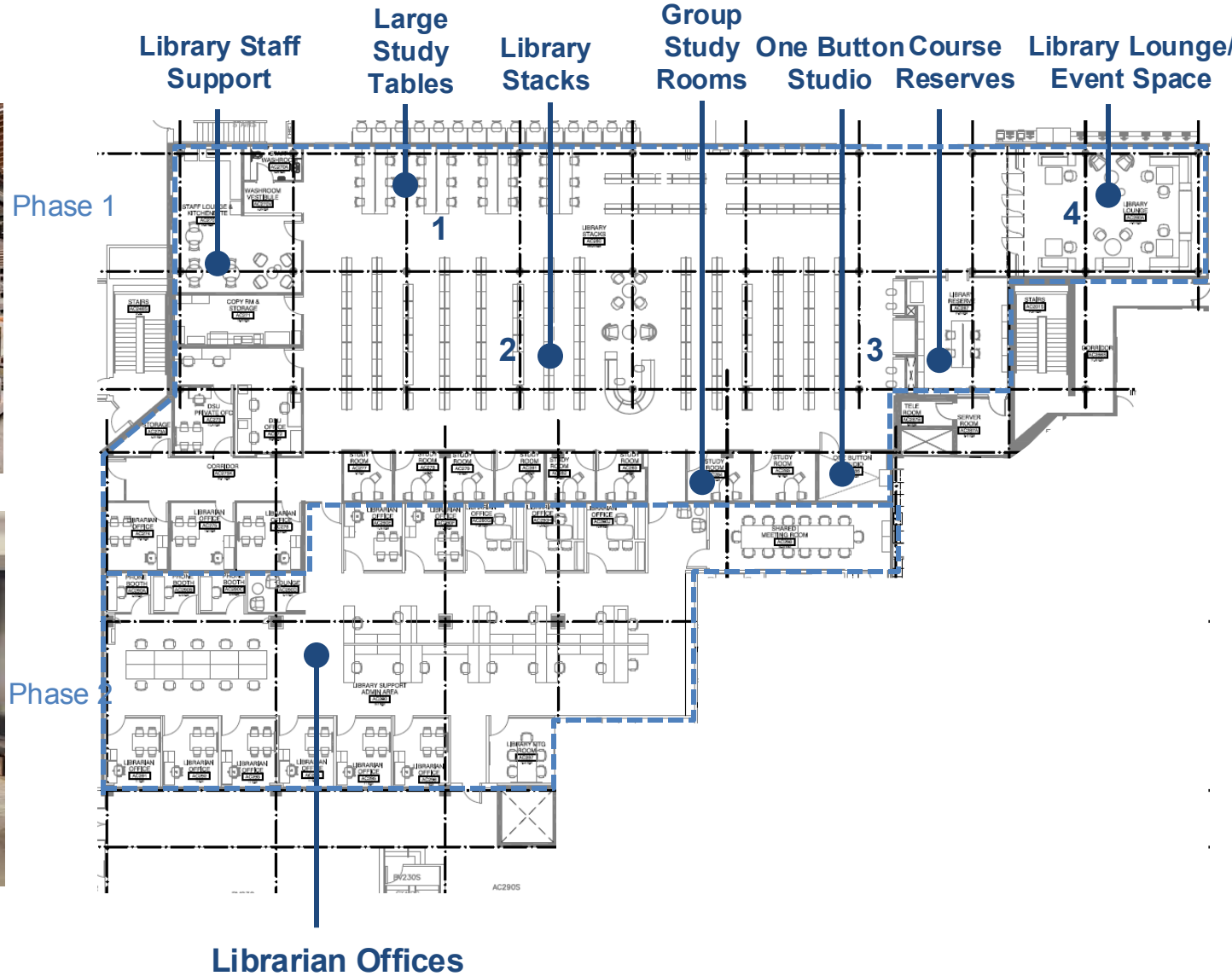
2. Library Stacks

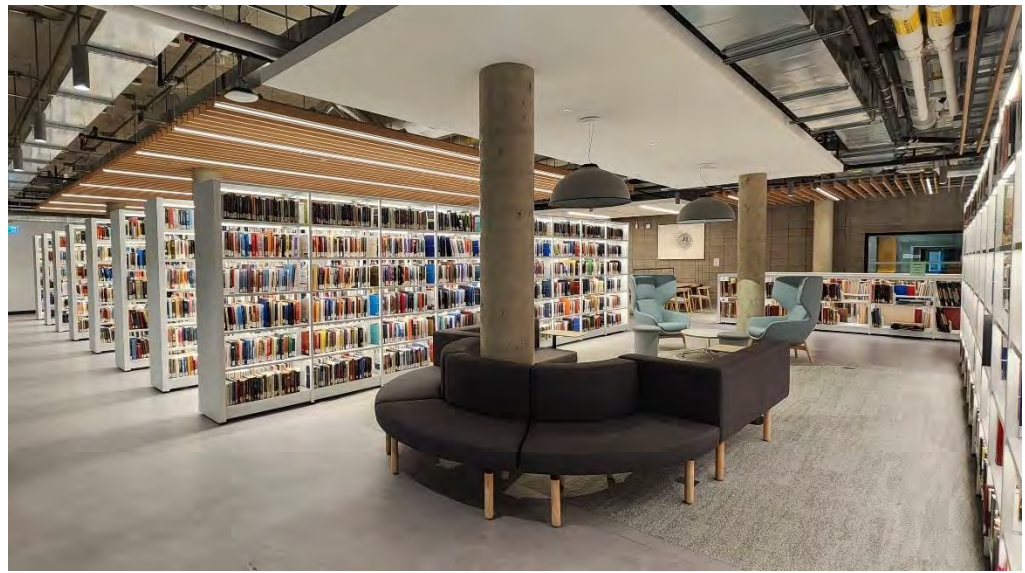
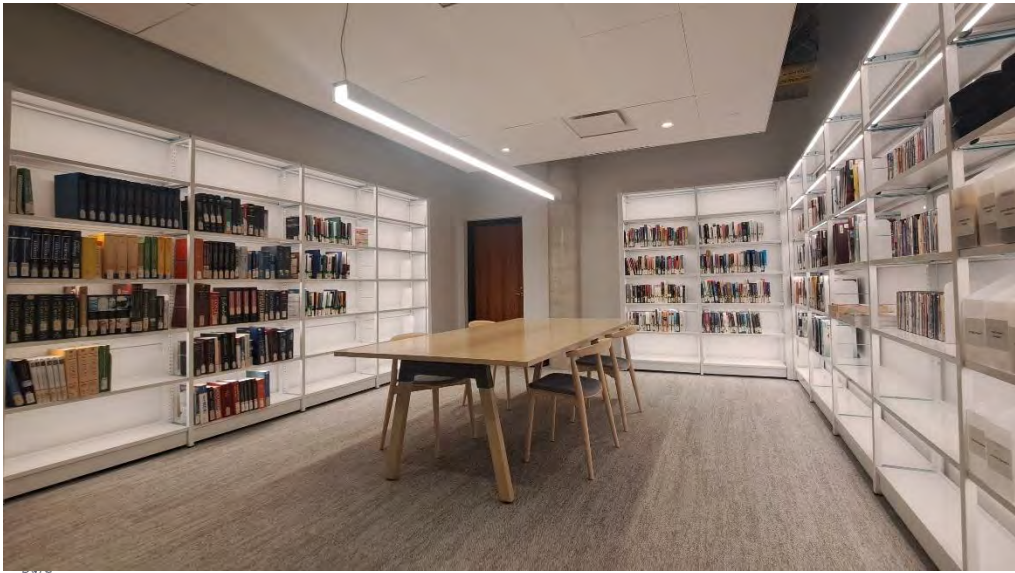


3. Library Seating



4. Library Lounge





LIBRARY PHASE-3 IDEAS



1. Laptop Bar



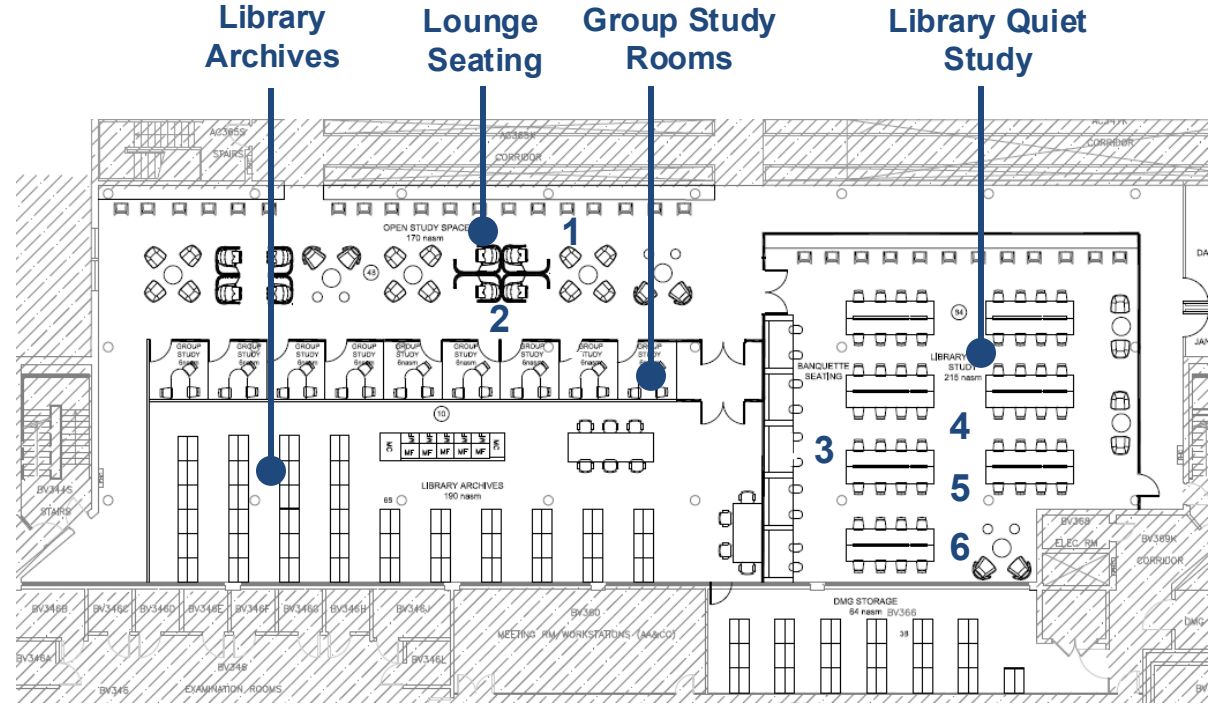
2. Lounge Seating



3. Banquette Seating



4. Large Study Tables



5. Circadian Lighting



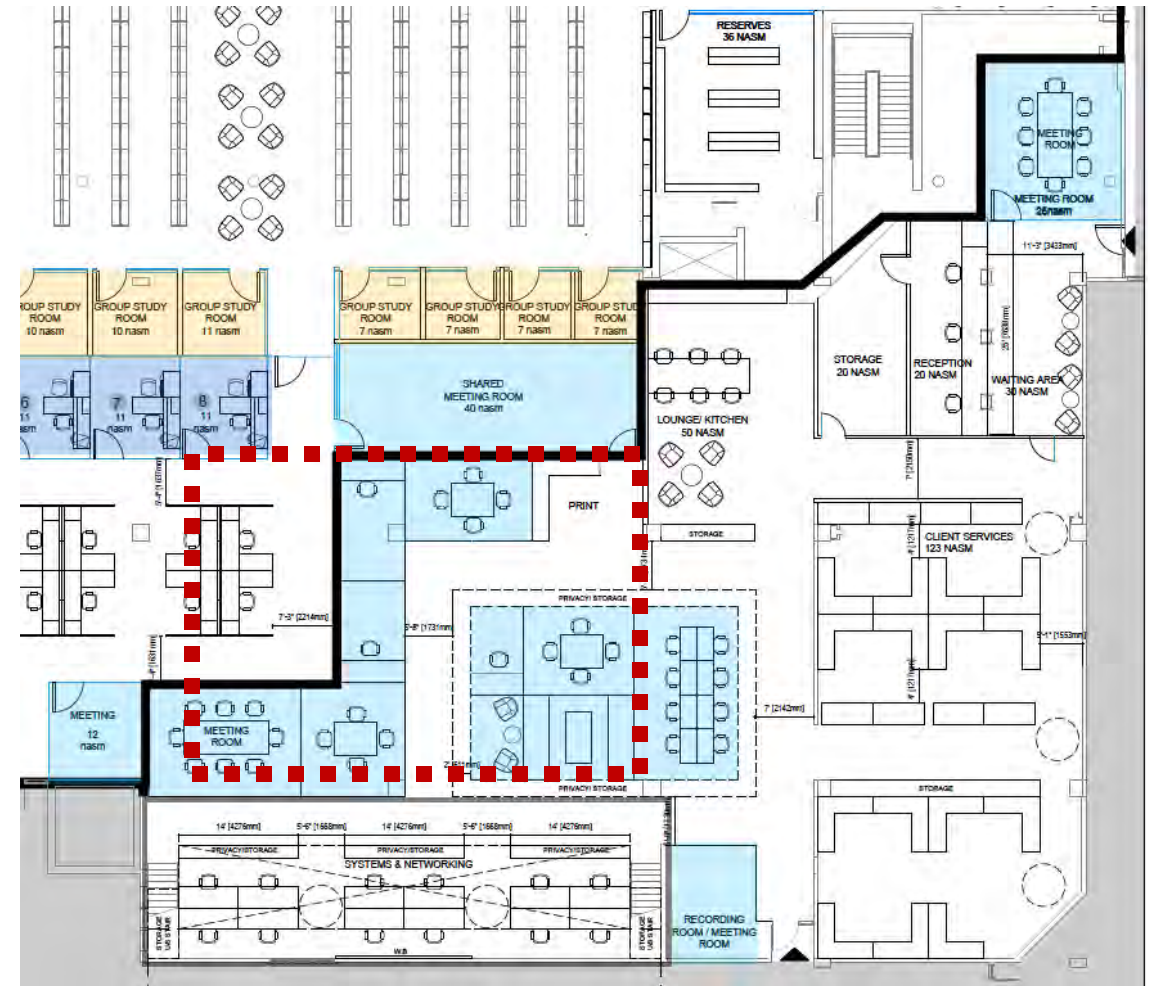
6. Skylight

Human Centered + 'Future of Work' Focused

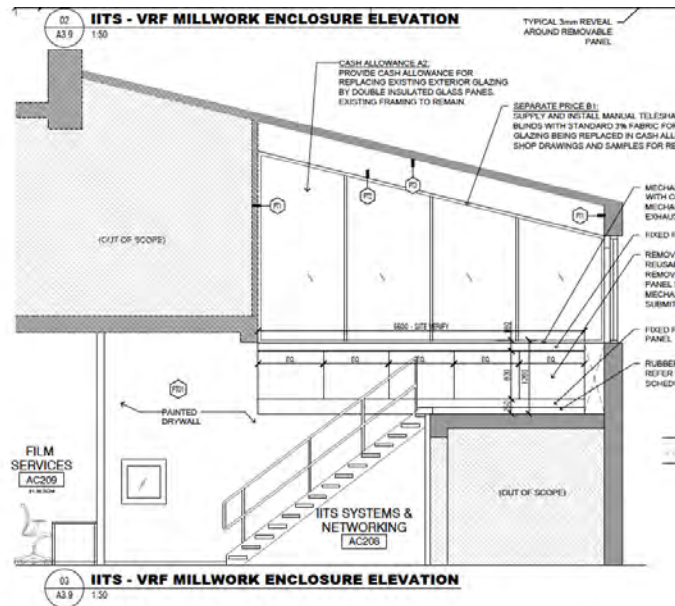


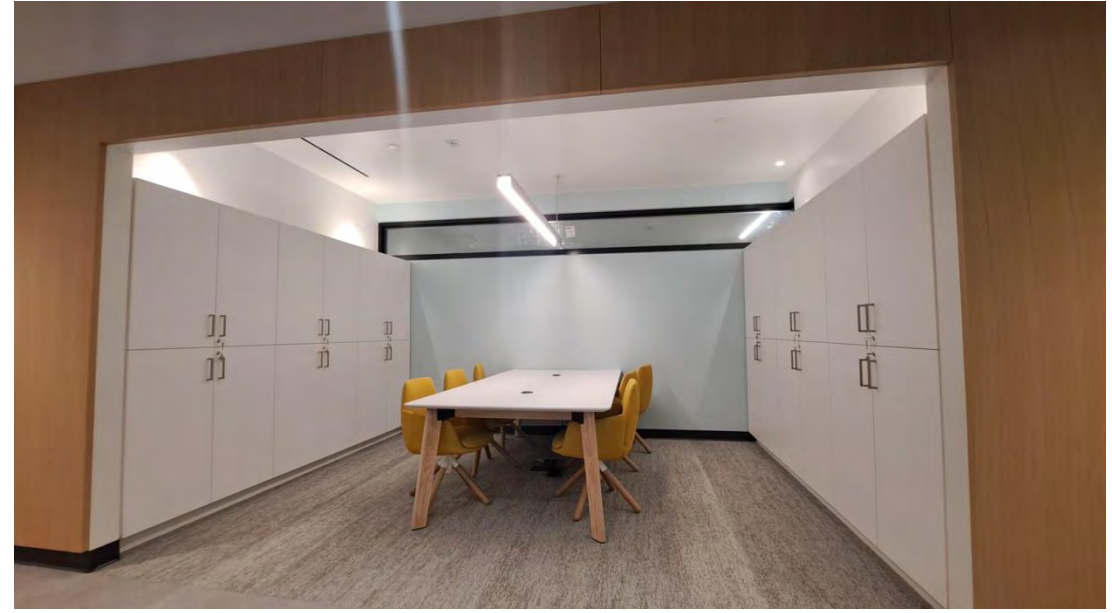


50 dedicated desks with few collaborative spaces

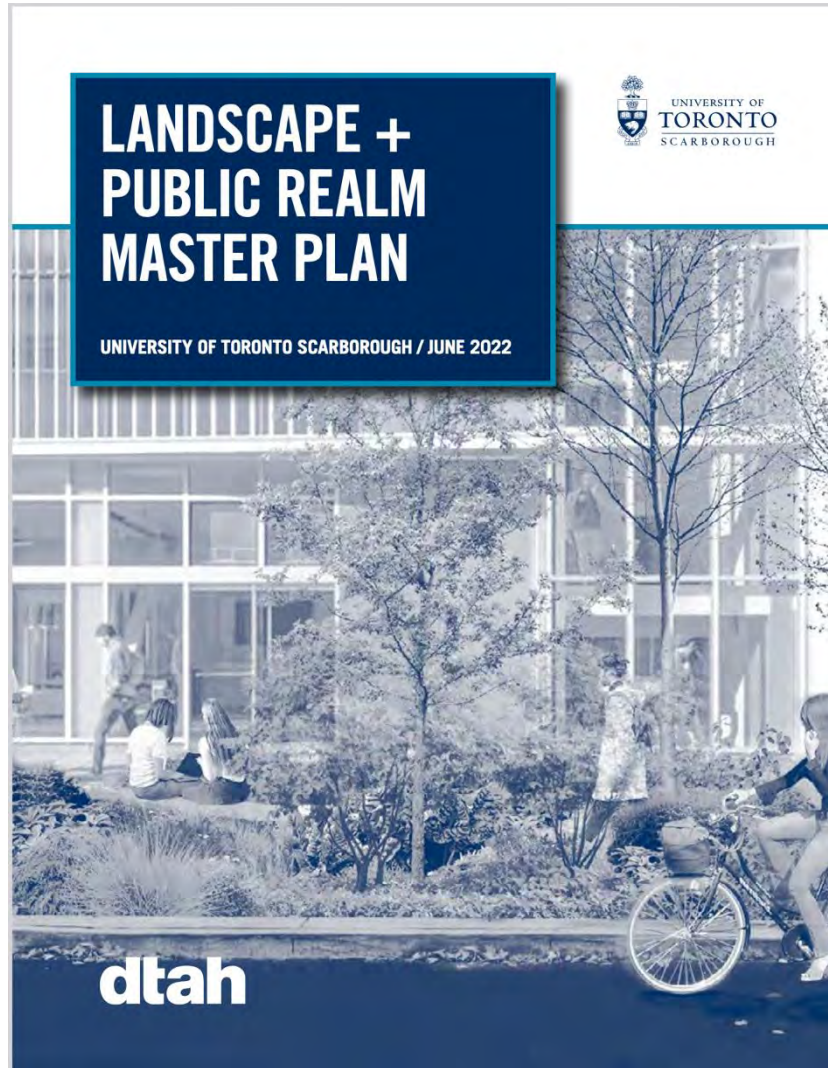


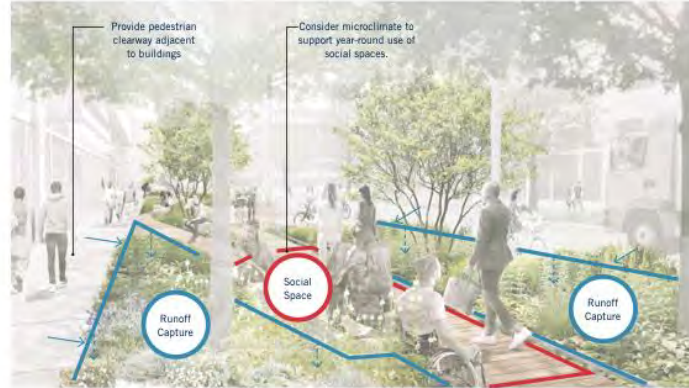
30 dedicated desks + multiple types and sizes of collaborative and 'tuck-in' spaces





Public Realm and Landscape + Partnerships + Academic Support













UNIVERSITY
TORONTO
SCARBOROUGH

Ma Moosh Ka Win Valley Trail



Our renamed campus space: Ma Moosh Ka Win Valley Trail feat. Elder Andrew Wesley

(Mushkegowuk Cree)

For the naming of Ma Moosh Ka Win Valley Trail (formerly known as Valley Land Trail), consultation with Elder Josh Eshkawogan and his family resulted in the ethos of the name for the trail, focusing on themes of healing, restoration, harmony and whispering trees.

Elder Andrew Wesley walked the trail to reflect on selected themes for the name and proposed the Cree name Ma Moosh Ka Win Valley Trail with the ethos of "people coming together with the land for healing restoration/to enjoy the environment/peace/water for healing".



Learning on the Land: a Ma Moosh Ka Win Trail Walk

Winter Trail Walk

Created by the Sociology Land-based Learning Lab (UTSC)

Josh Eshkawogon

Elder-in-Residence, UTSC, Wiikwemkoong Unceded Territory, Anishinaabe knowledge holder

Isaac Crosby

Traditional Plant Knowledge Keeper, Ojibways of Anderdon

Paul Pritchard

PhD Candidate, Sociology, University of Toronto, Red River Métis

Haven Townsend

Undergraduate student, Human Geography, UTSC

Professor Dani Kwan-Lafond

Assistant Professor, Principle Investigator (PI), LEAF/Sociology Land-based Learning Project

00:00 / 00:25

Introduction to Elder Josh Eshkawogon

Supported by the Learning & Education Advancement Fund (LEAF) program at the University of Toronto



Maple Grove

Listen to the Audio for Maple Tree and Maple Grove:

00:00 / 00:28

Ninaatig [ni-nahk-tik]. Ninaatig. Ninaatig means maple tree in our language, Ojibwe language. Ninaatig. Some people will say Minaatig [mi-nahk-tik], they'll add the word Mina [mi-nah] in that. Sometimes that Mina will identify the flow of the sap. Ninaatig is something in that very old language. Ninaatig. See you got Niinatigook [ni-nahk-ti-gohk] on the bottom there, the last paragraph. Says



Maple Grove

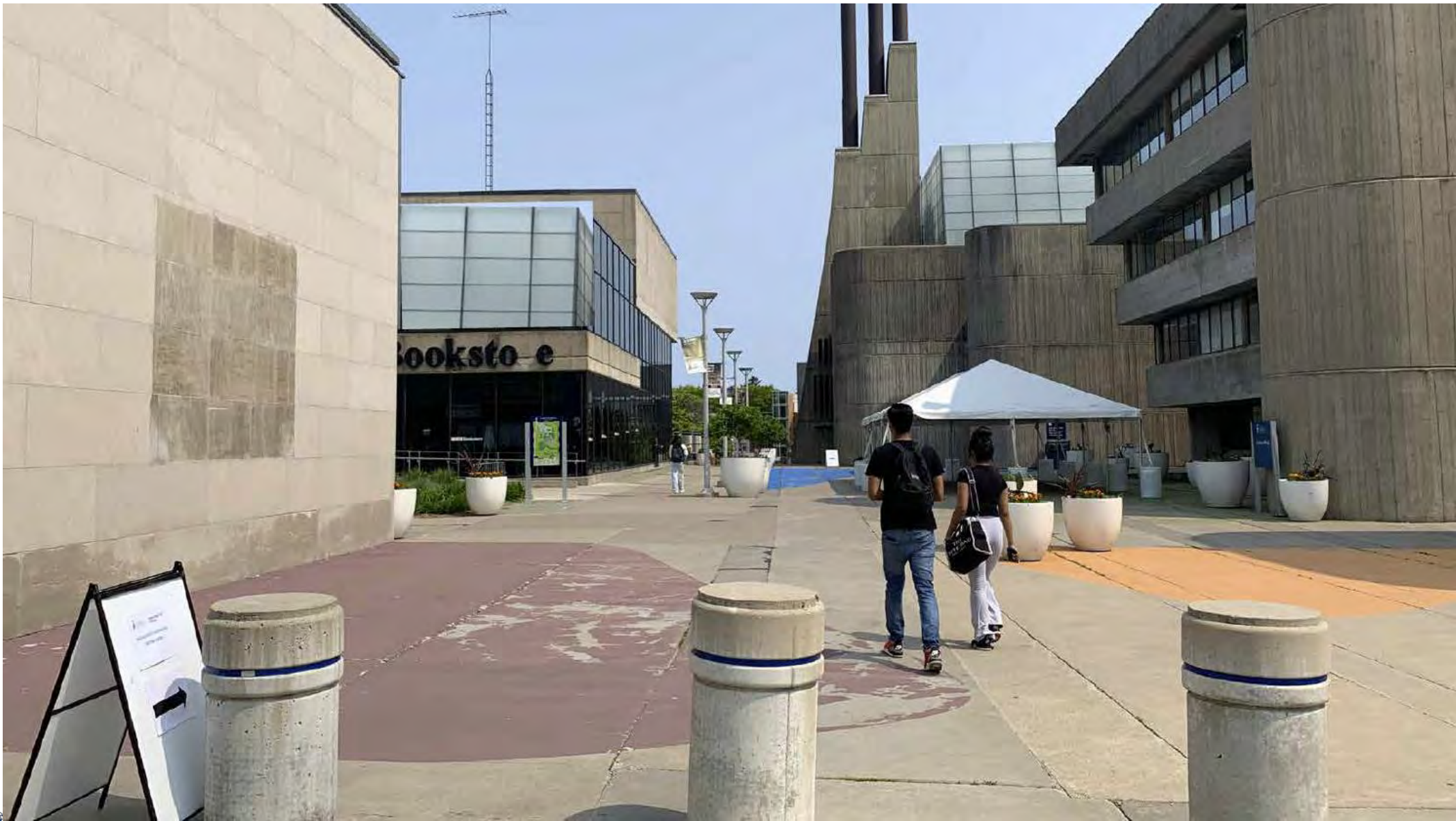
WHAT'S NEXT?

Targeted Renewal & Partnership work:

- South Campus flat floor classrooms
- ACM South Campus growth & LAMP programming
- Space Utilization planning study
- SW Public Spaces (with Energy Reduction Envelope work)
- **South Campus public spaces**
- HW Quad furniture
- SW Quad Vision Plan phase 1 & Donor Recognition project
- SW Terrace lighting
- Zoo partnership spaces
- Exploration of Covered Tennis courts (OTA partnership)



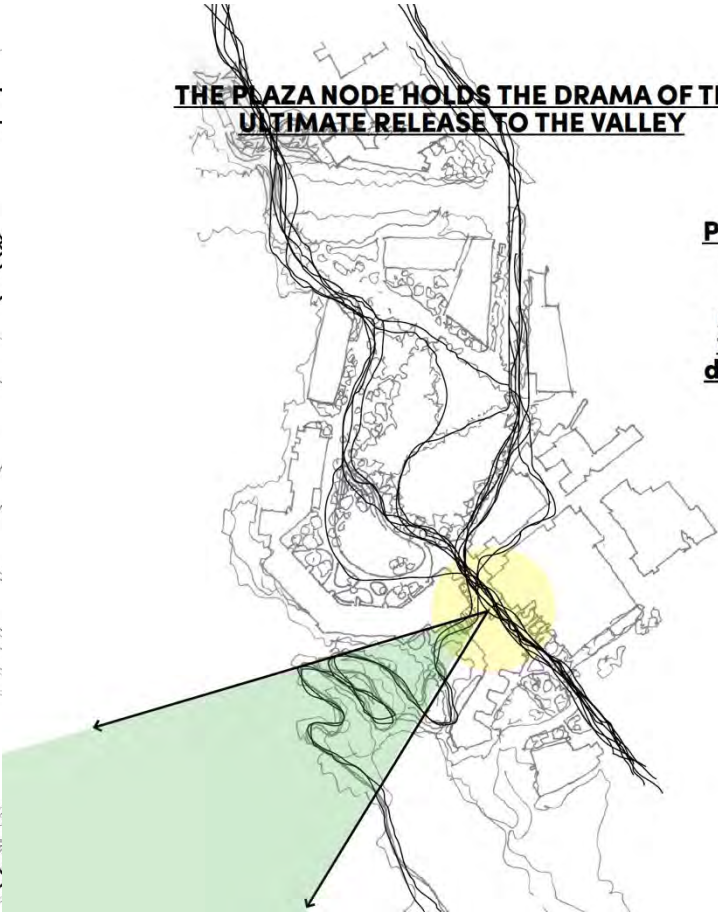
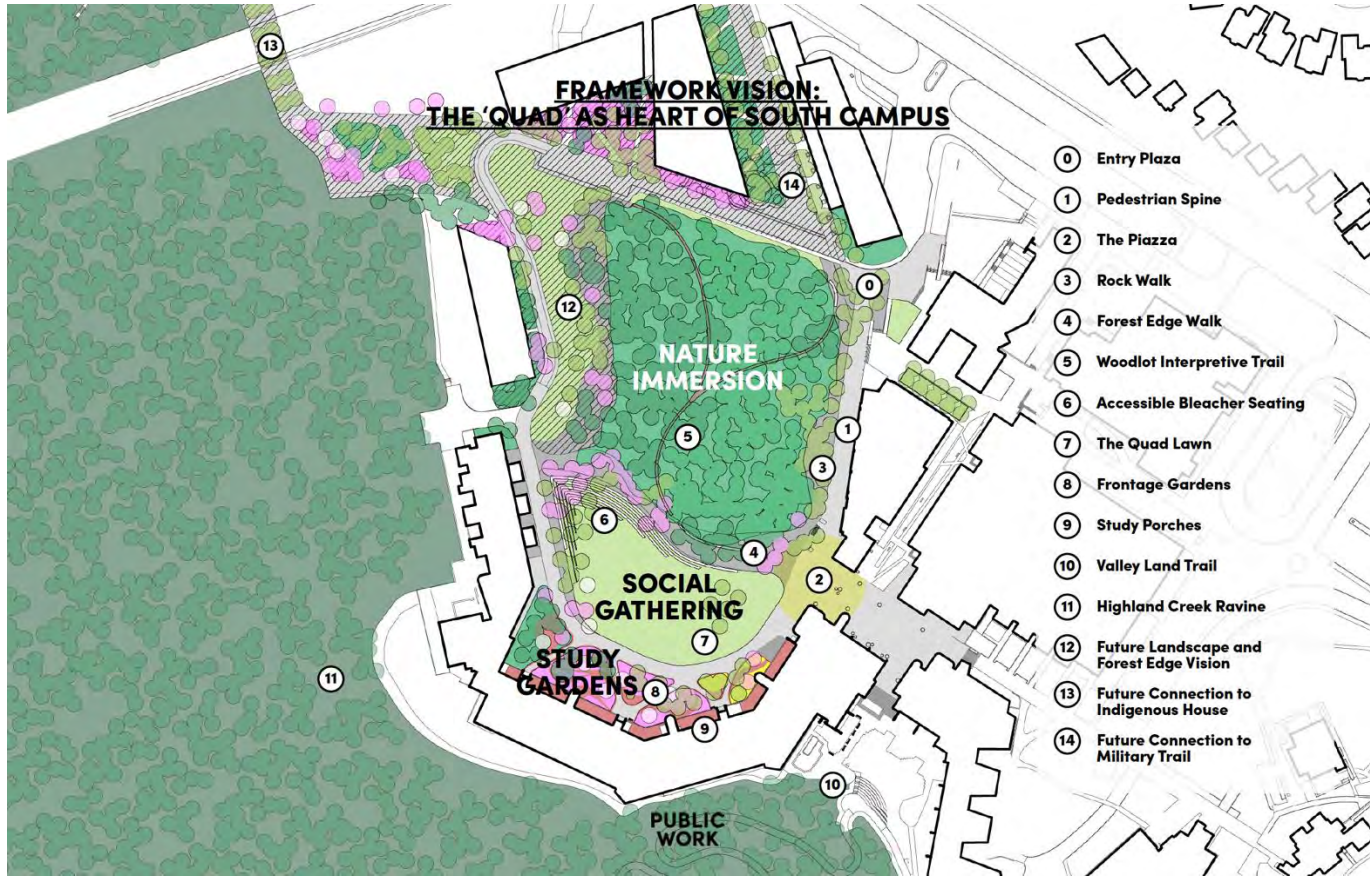




ANDREWS + HOUGH + CAMPUS LIFE

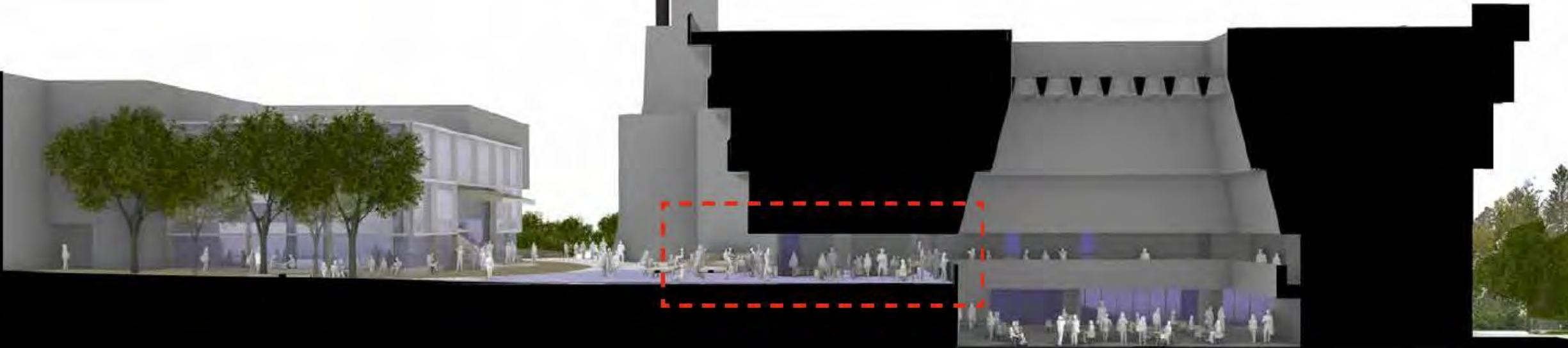
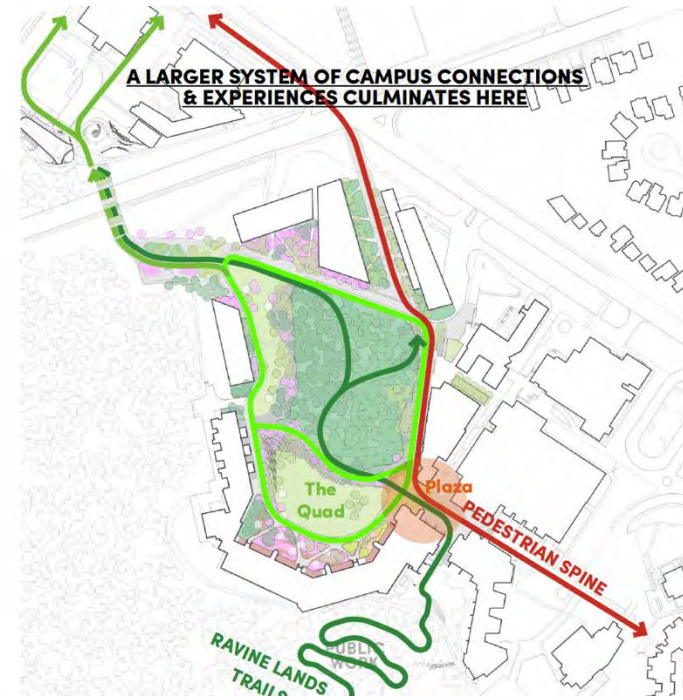
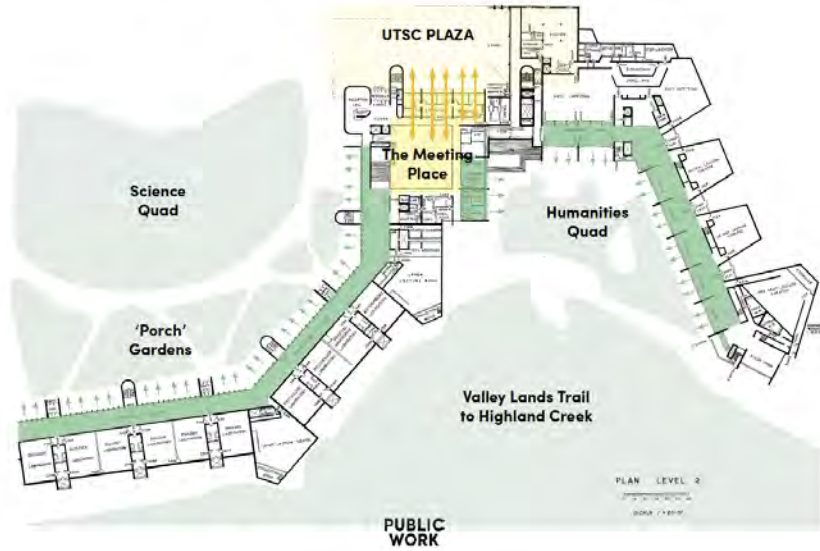


**PUBLIC
WORK**



**Part of a Larger System of campus
Connections and Experiences:
The unique interface between
natural systems from the ravine
to the plateau is the source for a
distinct south campus experience.**

**STRENGTHENING ANDREWS BUILDING FOR ANOTHER 60 YEARS:
INSIDE-OUTSIDE RELATIONSHIPS TO PLAZA HEART!**



DONOR RECOGNITION & FOREST IMMERSION

**DONOR RECOGNITION -
THE POWER OF INTEGRATION IN PLACE**

CREATE A FITTING TRIBUTE TO UTSC SUPPORTERS
TELL A BIGGER UTSC STORY
OFFER A MOMENT OF PAUSE AND NEW PERSPECTIVES
ALLOW A PLATFORM FOR ON-GOING GIVING (AT ALL LEVELS) & RECOGNITION
CREATE A NARRATIVE FOR FUTURE DONOR RECOGNITION INTEGRATION





THANK YOU

JENNIFER ADAMS PEFFER

Campus Architect | Director of
Architecture, Planning & Project
Development

jennifer.adams@utoronto.ca

A person stands on a rocky shore, looking out at a massive, layered glacier. The scene is captured in a cool, blue-toned aesthetic. The glacier's surface is highly textured with various ridges and crevasses. A large, semi-transparent white triangle is overlaid on the center of the image, framing the text.

DEFY GRAVITY



UNIVERSITY OF
TORONTO
SCARBOROUGH