An aerial photograph of Toronto, Canada, showing the city skyline with the CN Tower and various skyscrapers in the background. In the foreground, the University of Toronto campus is visible, featuring a large green lawn and several historic buildings with Gothic-style architecture.

The Network for Healthy Populations: Tackling the burden of diabetes through better care, lower risk factors and healthier living environments

Lorraine Lipscombe, MD, MSc, FRCPC
Executive Director, Novo Nordisk Network for Healthy Populations
Professor, Medicine and DLSPH, University of Toronto

**Novo Nordisk Network
for Healthy Populations**

In partnership with:



Novo Nordisk Network for Healthy Populations

A cross-disciplinary network to support health research



Create scalable solutions for chronic diseases

The University of Toronto Novo Nordisk Network for Healthy Populations is developing models for prevention and treatment of conditions like diabetes.



cities
for **better**
health

Established in 2021

Partnership between:

Temerty Faculty of Medicine

Dalla Lana School of Public Health

University of Toronto Mississauga



In partnership with:

**Novo Nordisk Network
for Healthy Populations**



Region of Peel
working with you

**Trillium
Health Partners**
Better Together

**Mississauga
Health**
Partnering for your health

Burden of Diabetes in Peel in 2020

- Population **1.4 million**
- Mix of urban, suburban, rural regions
- **62%** ethnic minority groups
- **47%** overweight/obese

Age-standardized prevalence: **15.5%**
Higher than provincial prevalence (9.8%)

Highest prevalence in:

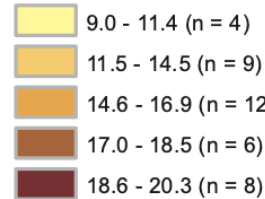
- **Inactive**
- **Overweight/obese**
- **Visible minorities**
- **Recent immigrants**
- **Low income**

Novo Nordisk Network
for Healthy Populations

In partnership with:



Age-Standardized Diabetes Rate Per 100
for Both Female and Male Population
Age 20 and Over, 2020
by Peel Health Data Zone



Ontario rate: 9.8

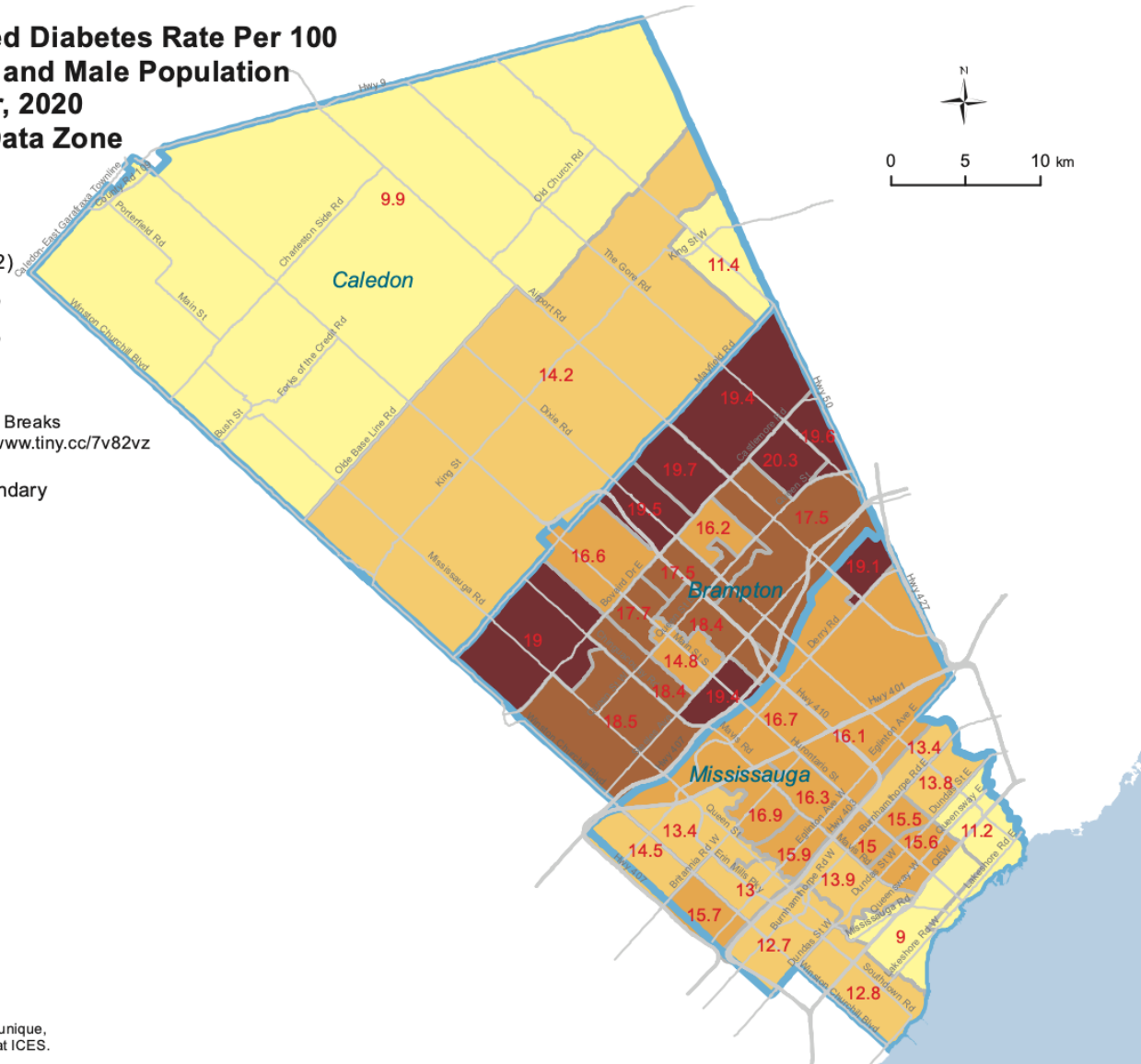
Classes created by Natural Breaks
For more info please see: www.tiny.cc/7v82vz

— Municipal boundary

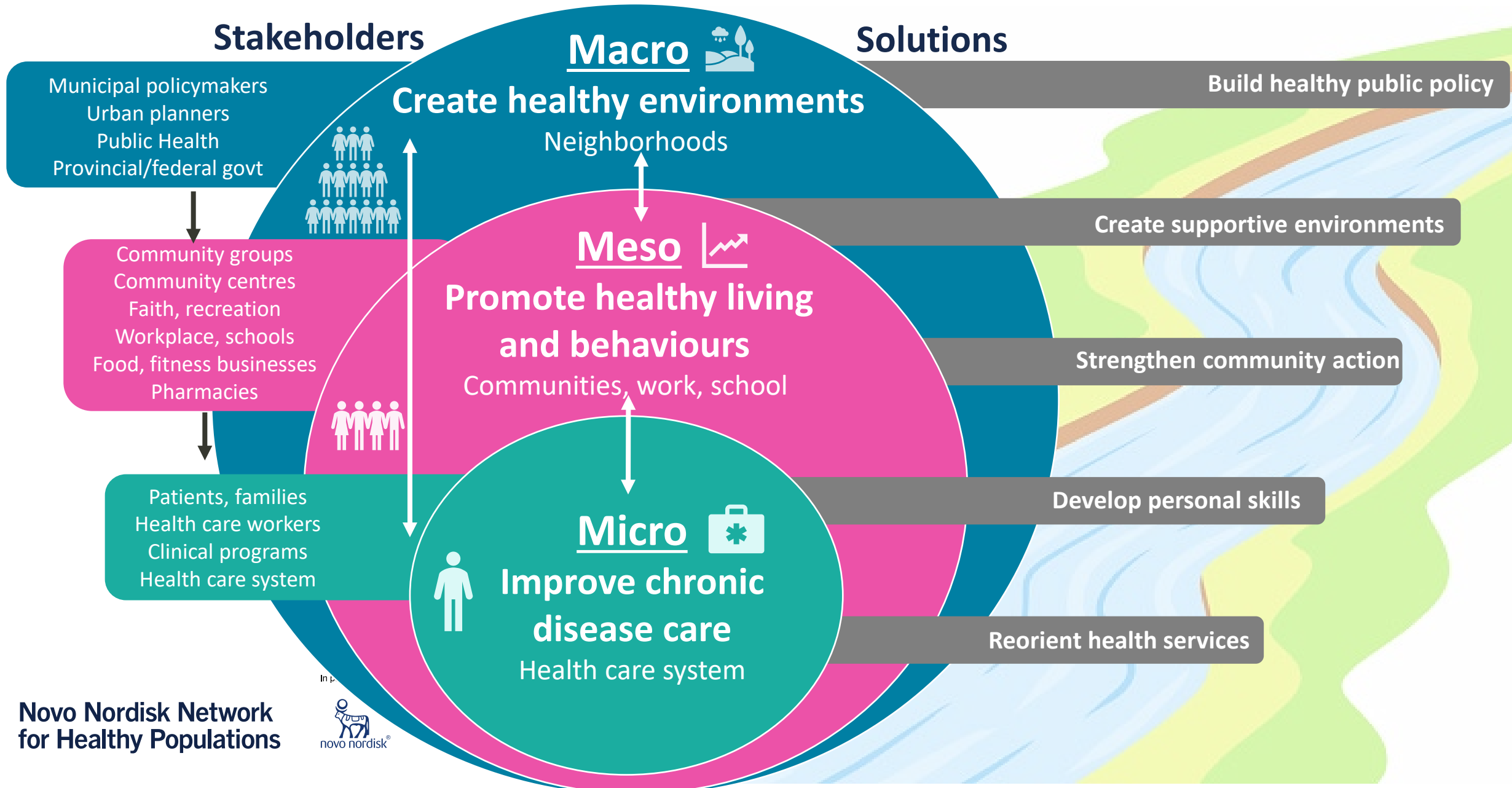
Data Sources:
ODD 2020
RPDB 2019

Copyright © 2022
Ontario Community Health
Profiles Partnership
Not for commercial use

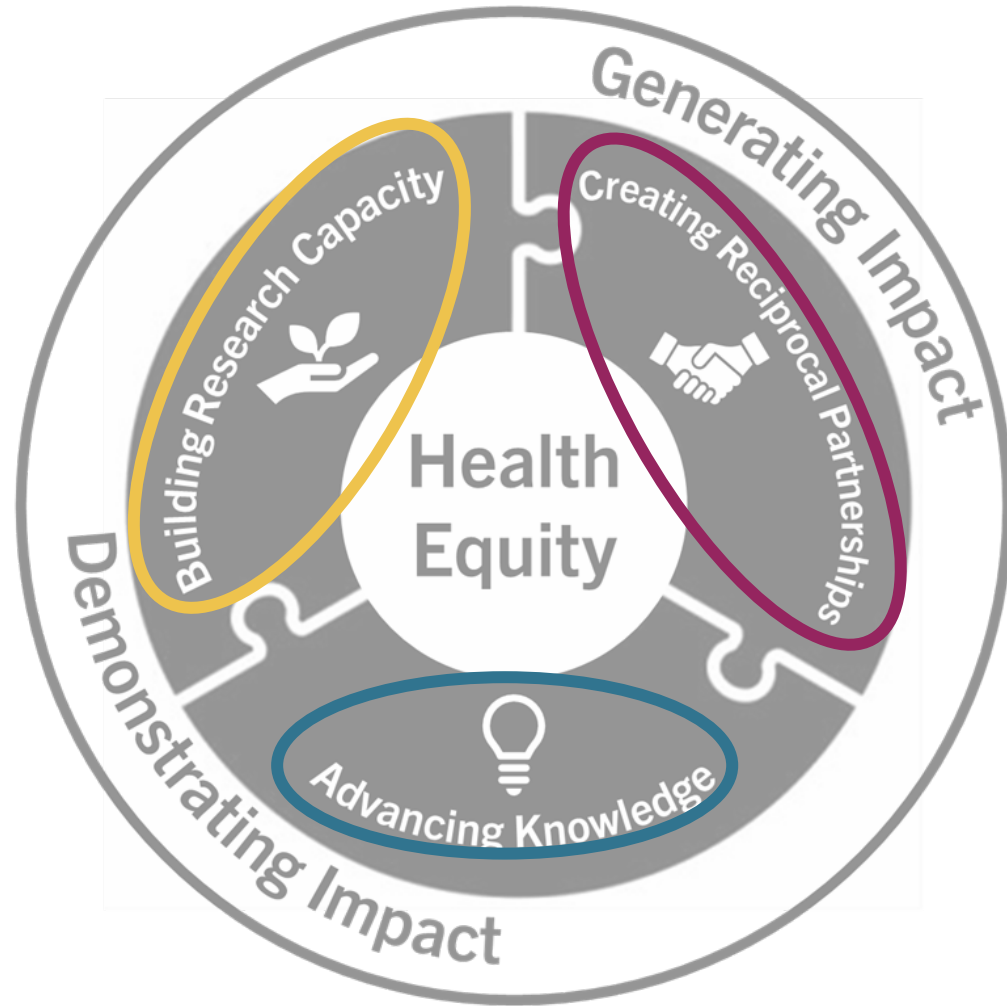
These datasets were linked using unique,
encoded identifiers and analyzed at ICES.



How to Promote Healthier Populations



Network Enabling Goals



UTM Strategic Plan



In partnership with:

**Novo Nordisk Network
for Healthy Populations**



Annual Summer Student Program



14 Undergraduate, Medical, and MPH students matched with supervisors

- Formal seminars
- Professional development opportunities
- Mentorship
- Research Day

**Novo Nordisk Network
for Healthy Populations**

In partnership with:



NHP Graduate Student Awardees



Ibrahim Ghanem: Explore the relationship between neighbourhood-built environment and health of immigrants in Canada



Ingrid Giesinger: Use machine learning methods to develop a theoretically informed social exposure measure, and evaluate the effect of total social exposure on multimorbidity incidence in Ontario



Sonya Grewal: Explore the barriers and enablers to accessing and using cancer genetics services among racialized and ethnic communities in Ontario



Ijeoma Itanyi: Use machine learning and causal inference methods to examine and predict multimorbidity risk among adults in Ontario



Mary Anne Panoyan: Identify modifiable factors and biological markers that are associated with chronic disease to better understand disease etiology and prevention



Scarlett Rakowska: Investigate the spatial associations of health diseases with exposure and accessibility to outdoor urban spaces

Network for Healthy Populations Faculty Chairs



Novo Nordisk Research Chair in Equitable Care of Diabetes and Related Conditions- Based at the Temerty Faculty of Medicine-

Dr. Baiju Shah appointed Sept. 1, 2022

- Professor, Dept of Medicine; endocrinologist, Sunnybrook Hospital

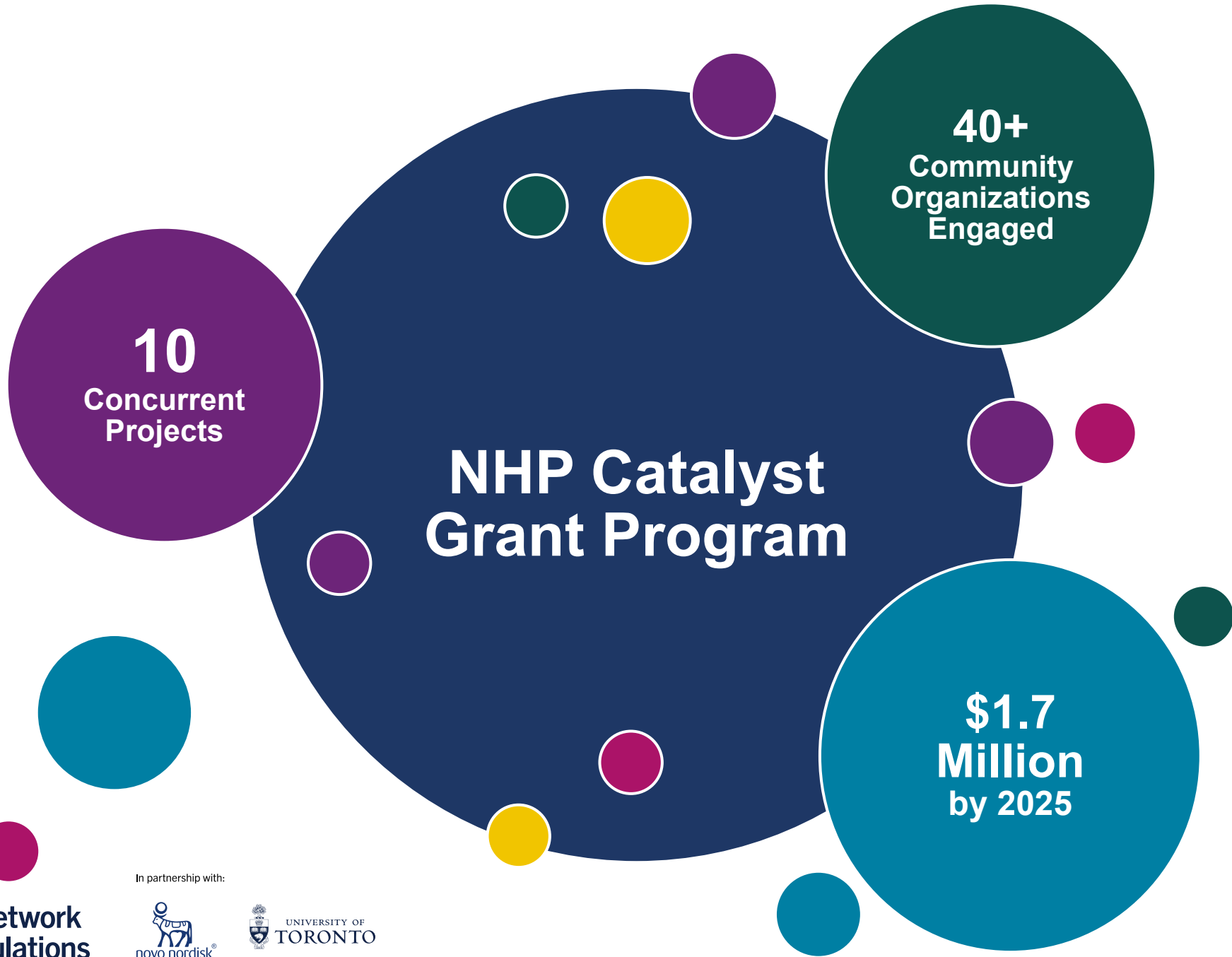


Novo Nordisk Professorship in Health Equity and Chronic Illness Prevention- Based at the Dalla Lana School of Public Health

Dr. Hailey Banack appointed Sept. 1, 2024

- Assistant Professor, Dalla Lana School of Public Health; Epidemiology

Novo Nordisk Research Chair in Social and Environmental Determinants of Health - Based at the University of Toronto Mississauga – *currently recruiting*



Reciprocal Partnerships: NHP Network

Academic Partnerships:



In partnership with:



Community Partnerships:



Public and Government Partnerships:



Looking Ahead

**New Research
Priorities and
Ideas**

**Data Analysis
and Evaluation
Strategy**

**Education
and
Capacity-
Building**

**Annual
Catalyst
Grants**

**New
Partnerships
and
Collaborations**