

# Report for the UTM Campus Council

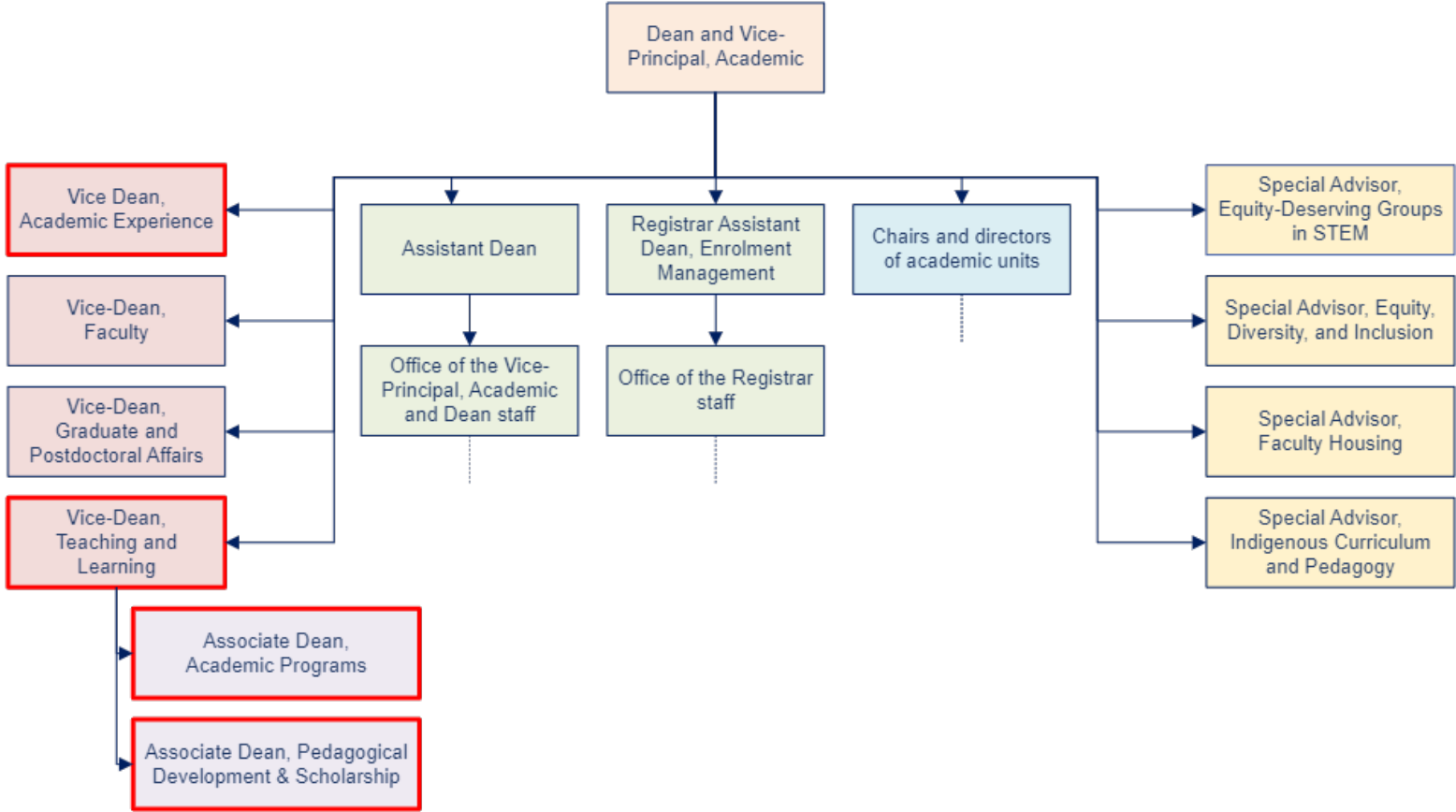
October 8, 2024

Presented by:

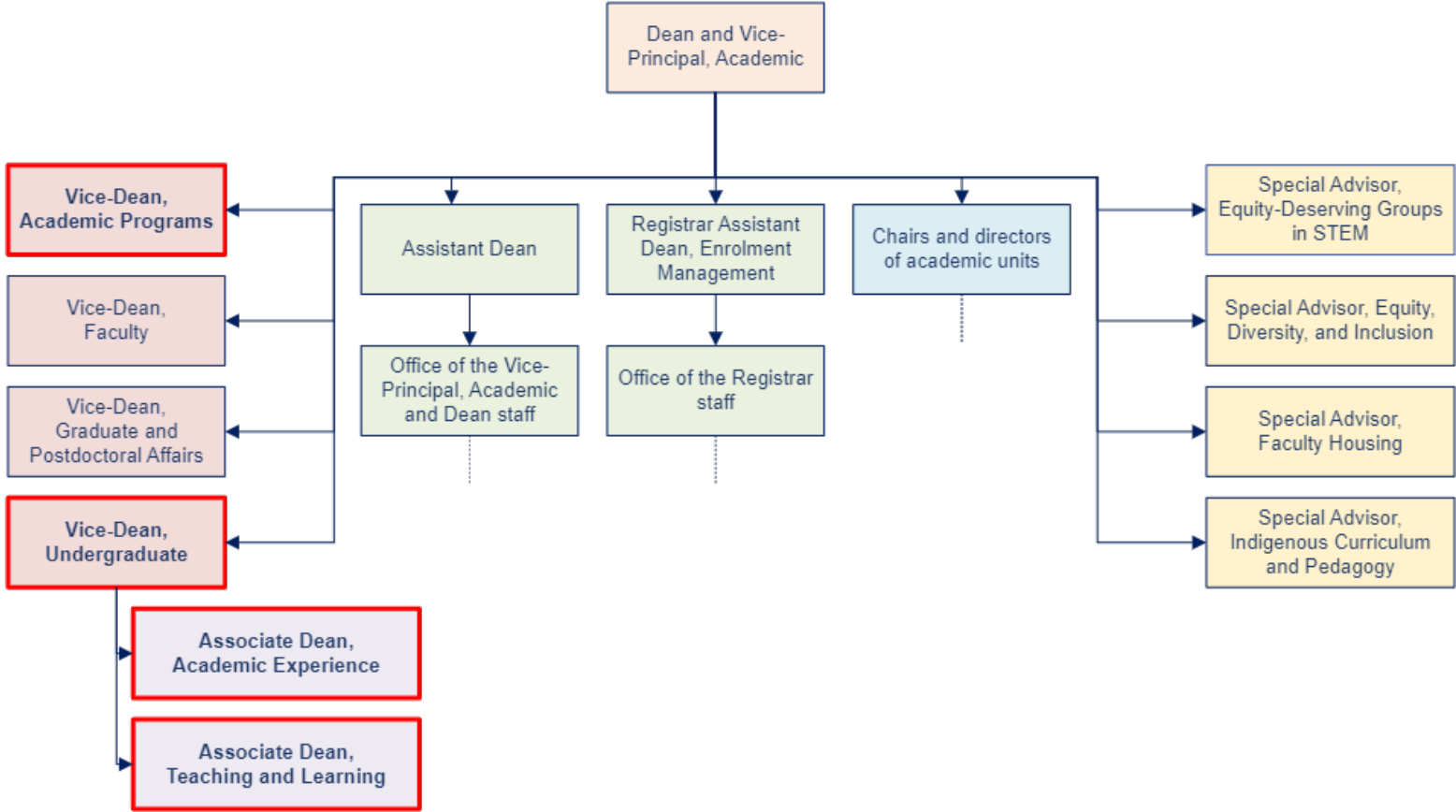
**Nicholas Rule**  
Vice-Principal, Academic & Dean



# OVPAD Organizational Chart, 2023-2024



# OVPAD Organizational Chart, 2024-2025



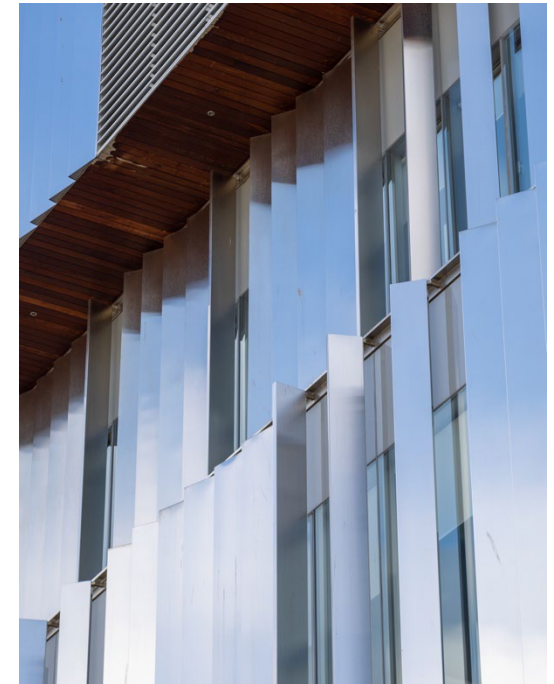
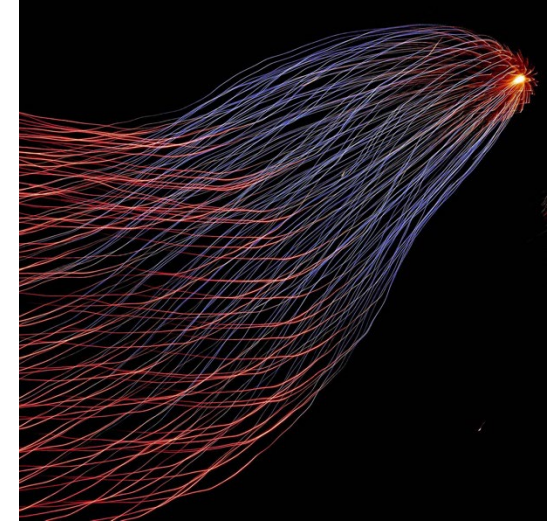
# Academic Priorities, 2024-2025

- Approve and launch implementation of UTM Academic Plan 2024-2029
- Design a campus Strategic Enrolment Management Plan
- Plan for graduate expansion and supports
- Deepen partnerships among academic units and the OVPAD to ensure mutual support and enable units and campus to achieve overarching goals



# Academic Change in Development

- **Two** new programs
  - Specialist in Accounting and Finance
  - PhD in Media Communications Technology
- **Two** major modifications
  - Freestanding Minor in Logic
  - Specialist in Computational Physics
- **New EDU-A: Institute for Forensic Science**



# Enrolment Overview

## UTM Undergraduate Enrolment as of September 24, 2024

Undergraduate	Newly Admitted	Returning	Total
Domestic	3,239 (3,082 FT   157 PT)	8,974 (7,804 FT   1,170 PT)	12,213
International	1,069 (948 FT   121 PT)	3,247 (2,826 FT   421 PT)	4,316
<b>Total</b>	<b>4,308</b>	<b>12,221</b>	<b>16,529</b>

# Enrolment Overview

## UTM Graduate Enrolment as of September 24, 2024

Professional Masters	Newly Admitted	Returning	Total
Domestic	197 (177 FT   20 PT)	121 (111 FT   10 PT)	318
International	88 (87 FT   1 PT)	79 (77 FT   2 PT)	167
<b>Total</b>	<b>285</b>	<b>200</b>	<b>485</b>
Total Graduate Community*	Newly Admitted	Returning	Total
Domestic	362 (341 FT   21 PT)	558 (545 FT   13 PT)	920
International	107 (106 FT   1 PT)	159 (157 FT   2 PT)	266
<b>Total</b>	<b>469</b>	<b>717</b>	<b>1,186</b>

\* Includes Professor Masters, MAM, and UTM affiliated students