



**UNIVERSITY OF TORONTO**

**AT MISSISSAUGA**

**CAMPUS POLICE**

**ANNUAL REPORT**

**2004**



## INDEX

Preface	03
---------	----

### PART ONE

Mandate	04
Organizational chart	05
Training	06

### PART TWO

Community Policing	07
Walksafe Patrol Service	07
First aid, CPR and Defibrillation Program	08
Media contact	08
Crime Stoppers	08
Group liaison	08
Committee participation	08
Community training by UTM Police	09
Representation	09

### PART THREE

UTM-Basic Facts	10
Occurrence total	11
Occurrences by month	12
Occurrences by time segments	13
Occurrences by location	14
Criminal occurrences against persons	15
Property related criminal offences	16
Driving related criminal offences	17
Provincial offences	18
Information	19
By-law offences	20
Illness and injury	21
Miscellaneous occurrences	22



*Preface:*

*The University of Toronto Police, Mississauga Campus, is a service dedicated to the concepts of Community Policing. Their functions are not limited to enforcing selected Federal, Provincial and Municipal laws. The University of Toronto Police, Mississauga Campus, maintain a close working relationship with the Peel Regional Police, the City of Mississauga Fire and Rescue Services and other related agencies to ensure a safer university community for students, staff and visitors.*

*Officers conduct foot, bicycle and vehicle patrols of the campus 24 hours a day, 7 days a week. They are also very much embedded in the community of UTM. Officers participate in many events and sit on several committees. It is for these reasons that the annual report comes in three parts.*

- 1) Part 1 - Departmental mandate structure and training*
- 2) Part 2 - Community policing programs and activities*
- 3) Part 3 - Statistical analysis of reports and investigated events*

## **PART 1**

### **DEPARTMENTAL MANDATE, STRUCTURE AND TRAINING**

#### **MANDATE**

The University Police Department is dedicated to creating a safe and secure environment for students, staff, faculty and visitors. In fulfilling this purpose, the University Police department works in partnership with the community at UTM in developing programs and conducting activities to promote safety and security on campus. The University Police Department is an interdependent service that facilitates internal and external resources. It is the department's philosophy that safety and security of the community is a responsibility of all members of the community.

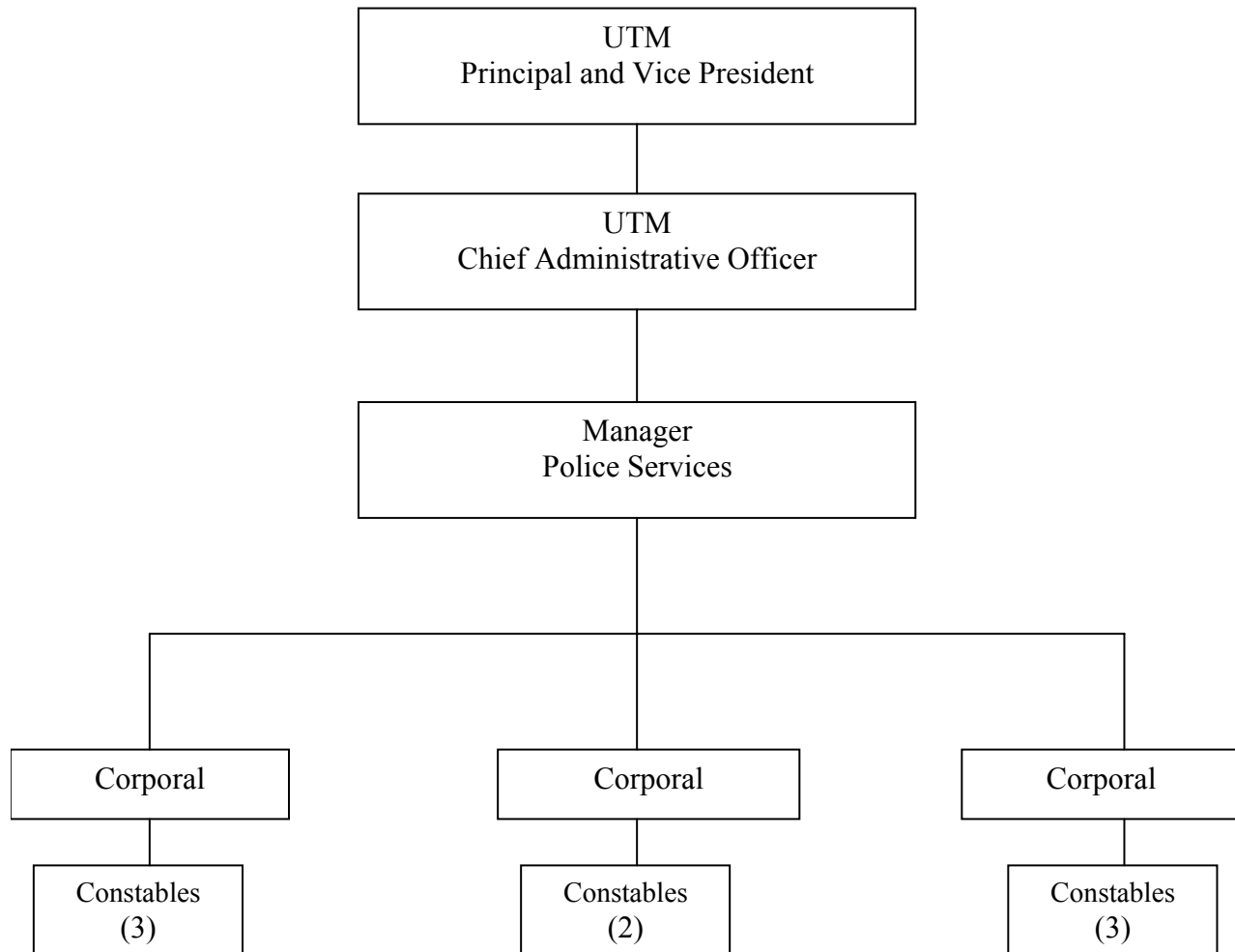
The eight points of the mandate are as follows:

- \* Personal safety*
- \* Protection of property*
- \* Conflict resolution*
- \* Maintenance of public order*
- \* Community services and referral*
- \* Emergency response assistance*
- \* Crime prevention and detection*
- \* Enforcement of the Criminal Code of Canada, applicable provincial statutes, municipal By-laws and university regulatory policies*

The following principles and values guide the University Police staff to insure the fulfillment of the mandate.

- \* Respect and dignity to all persons*
- \* Impartial treatment to all individuals*
- \* Sensitivity to all forms of diversity*
- \* Reliability and competence*

## **ORGANIZATIONAL STRUCTURE**



## **DEPARTMENTAL STRUCTURE**

To accommodate for UTM 2004/2005 enrolment growth, funding allowed for a staff increase by one constable. In total there is a manager, three corporals and eight constables.

The department followed a short chain of command, with its manager reporting directly to UTM's Chief Administrative Officer.

In the absence of a corporal, the senior constable on duty was delegated the duties of acting corporal.

The normal complement of each twelve-hour shift was two or three officers. The goal of the Year 2005/2006 is to add another position of a corporal and create a position of patrol sergeant. <sup>5</sup>

## **TRAINING**

The Year 2004 saw a variety of courses that were taken by officers in the service. The following is what was achieved:

<b>Mountain bike operations and service</b>	<b>05 officers</b>
<b>First aid and CPR</b>	<b>10 officers</b>
<b>Defibrillation operations</b>	<b>10 officers</b>
<b>Defibrillation instructor's course</b>	<b>01 officer</b>
<b>Diversity in the community</b>	<b>01 officer</b>
<b>Web page design</b>	<b>02 officers</b>
<b>Special constable course in conjunction with Centennial College of Applied Arts and Technology</b>	<b>01 officer</b>

\*An agreement with Peel Regional Police, Bureau of Training, was concluded early in 2005. Envisioned is an ongoing relationship to facilitate a wide range of courses that would benefit the officers in their line of work and the community they serve.

*Two officers continue to pursue post-secondary education at University of Toronto at Mississauga and Ryerson University.*

*One officer completed an introductory course in Windows Excel.*

## **PART 2**

### **COMMUNITY POLICING PROGRAMS AND ACTIVITIES**

#### **COMMUNITY POLICING**

UTM Police has long recognized the need for a partnership with the university community. As a result, the service finds itself integrated with all groups that make up UTM. This integration is gradual and open to steady evolution, as change and innovation are found to be the correct way in dealing with public safety needs. Students, staff and guests demand a safer community, and the UTM police have responded with a series of activities and programs.

University Policing is not primarily a law enforcement doctrine. It allows for a diverse involvement that expands the boundaries of traditional forms of policing. Some of the programs coordinated by UTM Police were as follows:

#### **WALKSAFE PATROL SERVICES**

Fourteen unionized students worked on a part time basis, averaging four hours per week, during the January to April and September to December periods. Operating in teams of two, a male and a female, one team per evening on Sundays to Wednesdays and on Fridays, they provided accompaniment to anyone wishing to be walked on campus. On Thursdays, there were two teams scheduled to accommodate extended hours. On Saturdays, the program did not run. Between service walks, team members patrolled the buildings and grounds of the campus. On occasion, they were assigned to check on the status of street lighting and emergency phones. University Police oversaw the general management of the program, and took an active part in the hiring process and training of its members. Scheduling and daily coordination were left to the program's student supervisor.

On average, three persons were walked per evening. Typical routes were between academic buildings, residence areas and parking lots. Off campus service was not provided.

Observations and recommendations from its staff were followed up. Staff was encouraged to promote the program on campus by being visible and approachable.

Clientele varied but were predominantly women. People with physical disabilities from both genders also used the service. When the program was not operating or when routes surpassed campus boundaries, University Police provided accompaniment.

## **FIRST AID, CPR AND DEFIBRILLATION PROGRAM.**

First Aid and CPR training remained popular with students wishing certification. The expanded program also covered training to a select group of staff on campus for the use and operation of the defibrillation apparatus. A monthly schedule allowed people who were interested in the techniques of saving lives, the option to take training at a time convenient to them. St John's Ambulance and the Mississauga Fire Service were key facilitators of equipment and guidance.

## **MEDIA CONTACT**

Weekly summaries were released to the campus student media every Thursday morning. The summaries were also featured on the UTM Police web page. The release provided community members with basic information on weekly events involving crime and other occurrences on campus.

On occasion, investigative journalists, focusing on pressing safety and security issues that had campus wide interest, met with the University Police Manager for comments and explanations.

## **CRIME STOPPERS**

Affiliation with Peel Regional Police, Bureau of Crime Stoppers, continued in 2004. Two incidents were profiled for media release. Profiled cases are now part of the UTM Police web page.

## **GROUP LIAISON**

Officers met on a scheduled basis with residence dons and student government staff. Issues of concern were discussed, and training and programs were provided.

## **COMMITTEE PARTICIPATION**

UTM Police was active in several community committees. Contribution was made in fields of security and safety. The following is a list of committees officers participated in:

- \* Planning Committee for the new Wellness Center
- \* Planning Committee for the new Academic Learning Center
- \* Erindale College Council
- \* Joint Health and Safety Committee
- \* Personal Safety Committee
- \* Quality of Services to Students (Group safety and audit)
- \* Parking and Transportation Sub-committee
- \* Peel Partners for a Drug Free Community



## **COMMUNITY TRAINING BY UTM POLICE**

Education on safety, security, leadership and first aid to a wide spectrum of groups continued. Qualified officers participated in the following presentations:

- \* Library staff at UTM (Safety and security)
- \* Fire warden staff (Safety and evacuation procedures)
- \* Residence dons at UTM (Safety, security and leadership)
- \* Residence staff (First aid)
- \* New residence students at UTM (Safety and security)
- \* Information booth staff at UTM (Money handling and security)
- \* Walksafe/ Patrol staff at UTM (Patrolling procedures, first aid and security)
- \* Student seminar at UTM (Leadership)
- \* Sports camp staff (First Aid)
- \* Children living at UTM (Playground and Halloween night safety)
- \* Community members, staff and students, at UTM (First aid and CPR)
- \* Sexual Education Center (Sexual assault and criminal harassment)
- \* Staff at St. George (Development and leadership)
- \* Hart House staff at St. George (Dealing with difficult behavior)
- \* Department of Sociology (Guest lecturing on the principals of Community Policing)

## **REPRESENTATION BY UTM POLICE WERE TO THE FOLLOWING EVENTS**

- \* Montreal Massacre Commemoration Ceremony
- \* Bowlathon for the Rape Crisis Center/ Multicultural Women Against Rape
- \* Sexual Assault Workshop
- \* Peel Regional Police Open House event
- \* Baseball summer community tournament
- \* UTM Open House event
- \* Various charity fundraisers

### **Part 3**

## **STATISTICAL ANALYSIS OF INVESTIGATED OCCURRENCES**

### **UTM: BASIC FACTS**

#### **POPULATION**

Students 9350 (full and part time)

Faculty and staff 680

#### **GROUND AND BUILDINGS**

Acreage 224

Built up areas sit on approximately one hundred acres

Four primary academic buildings

Student Center

One facilities building

Two residential buildings-Apartment style living

Five town house villages

Ten parking lots

One underground parking facility

Forested area on the north and east sides of the campus

Population growth has been rapid with further growth expected in the coming years.

Completed in 2004 were the CCIT Building and the Erindale Hall student residence.

Presently under construction are the Recreation & Wellness Center and the new Academic Learning Center.

Adjacent property, currently The Spring Bank Visual Arts Center, will become part of UTM in 2005

Noteworthy in 2004 (as compared to 2003)

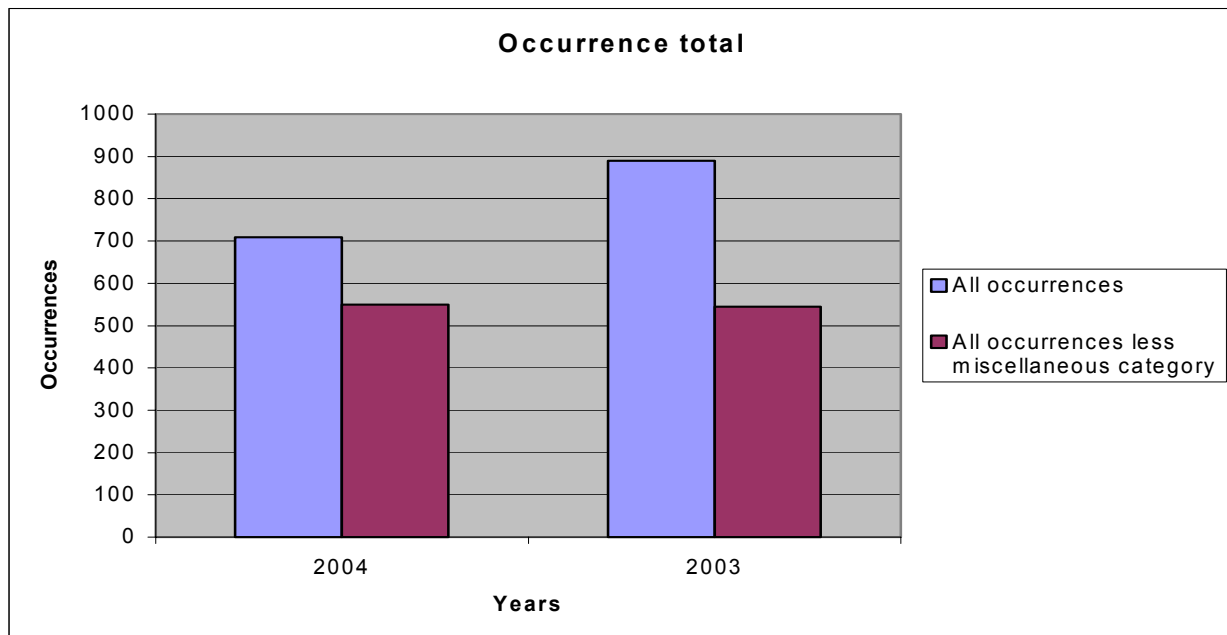
Criminal offences against persons	<b>067 vs. 059</b>	<b>Up 008</b>
Property related criminal offences	<b>133 vs. 113</b>	<b>Up 020</b>
Driving related criminal offences	<b>010 vs. 004</b>	<b>Up 006</b>
Information/ suspicious circumstances	<b>108 vs. 092</b>	<b>Up 016</b>
Provincial offences	<b>080 vs. 118</b>	<b>Down 038</b>
By-law offences	<b>037 vs. 028</b>	<b>Up 009</b>
Illness and injury	<b>104 vs. 109</b>	<b>Down 005</b>
Miscellaneous Occurrences	<b>170 vs. 367</b>	<b>Down 197</b>

The number of reported occurrences for 2004 is 709. For 2003 the number stood at 890. The dramatic differential is primarily due to the drop in the Miscellaneous Category of occurrences, from 367 in 2003 to 170 in 2004.

The rise in criminal occurrences is a testament of an increased population. However, one significant change is the reduction of break and entry incidents to zero from twelve. Security measures introduced in 2004 proved their effectiveness.

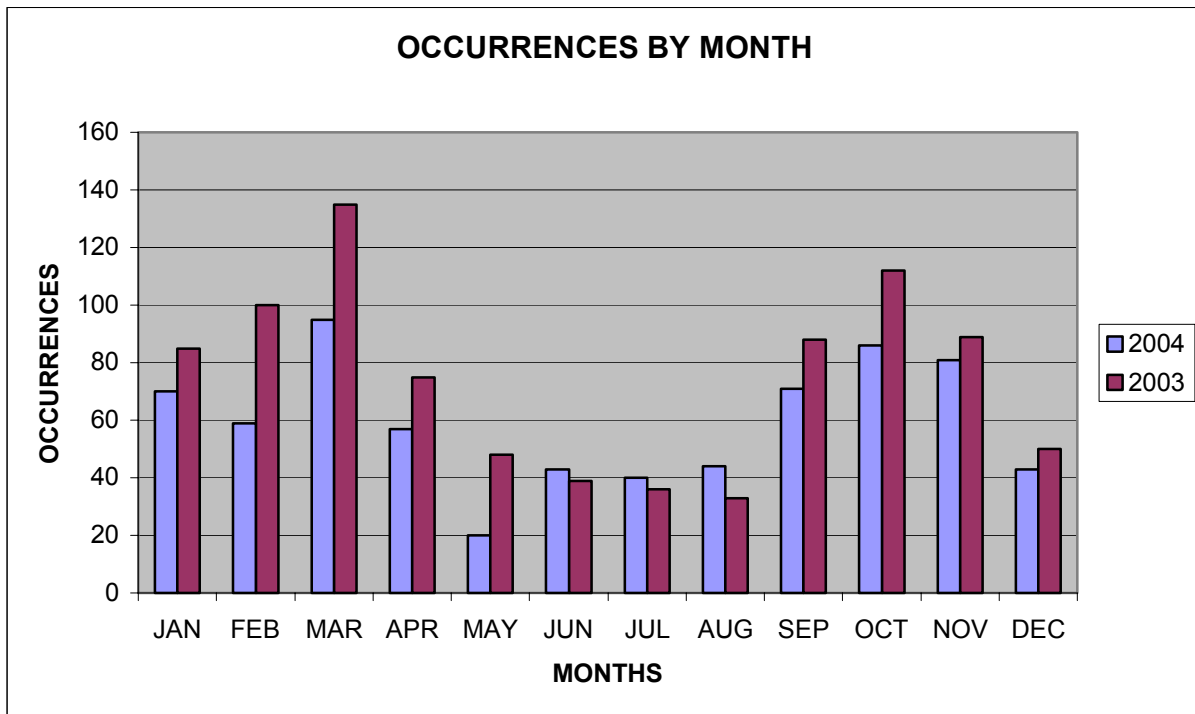
The drop in the Miscellaneous Category is explained by the sizable reduction of reported incidents in three of its sub categories:

- 1-Intrusion alarm
- 2-Call to service
- 3-Insecure premise



### OCCURRENCES BY MONTH

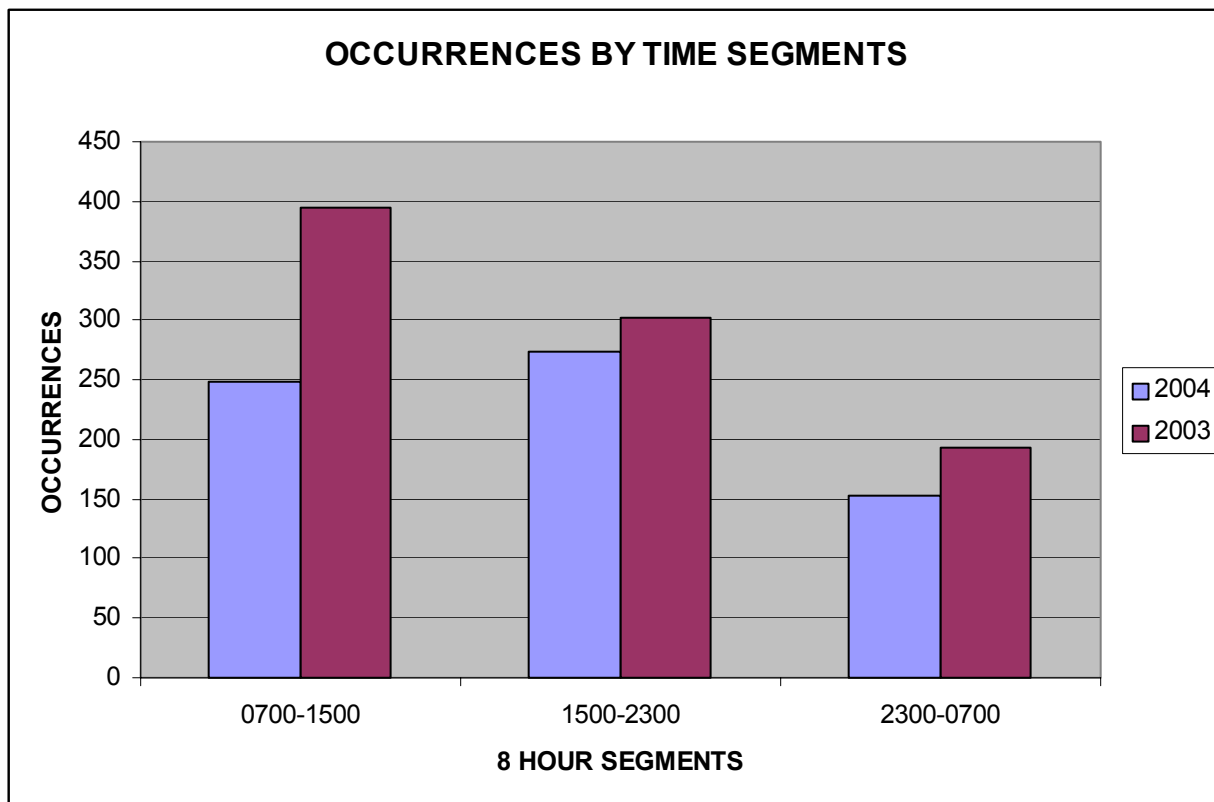
YR	JAN	FEB	MAR	APR	MAY	JUN	JUL	AUG	SEP	OCT	NOV	DEC	TTL
2004	70	59	95	57	20	43	40	44	71	86	81	43	709
2003	85	100	135	75	48	39	36	33	88	112	89	50	890



As expected the annual monthly allocations mirror student occupancy ratio. September to April period has always been a busy time.

### OCCURRENCES BY TIME SEGMENTS

YEAR	0700-1500	1500-2300	2300-0700	TOTAL
2004	249	274	186	709
2003	395	302	193	890



#### Trends

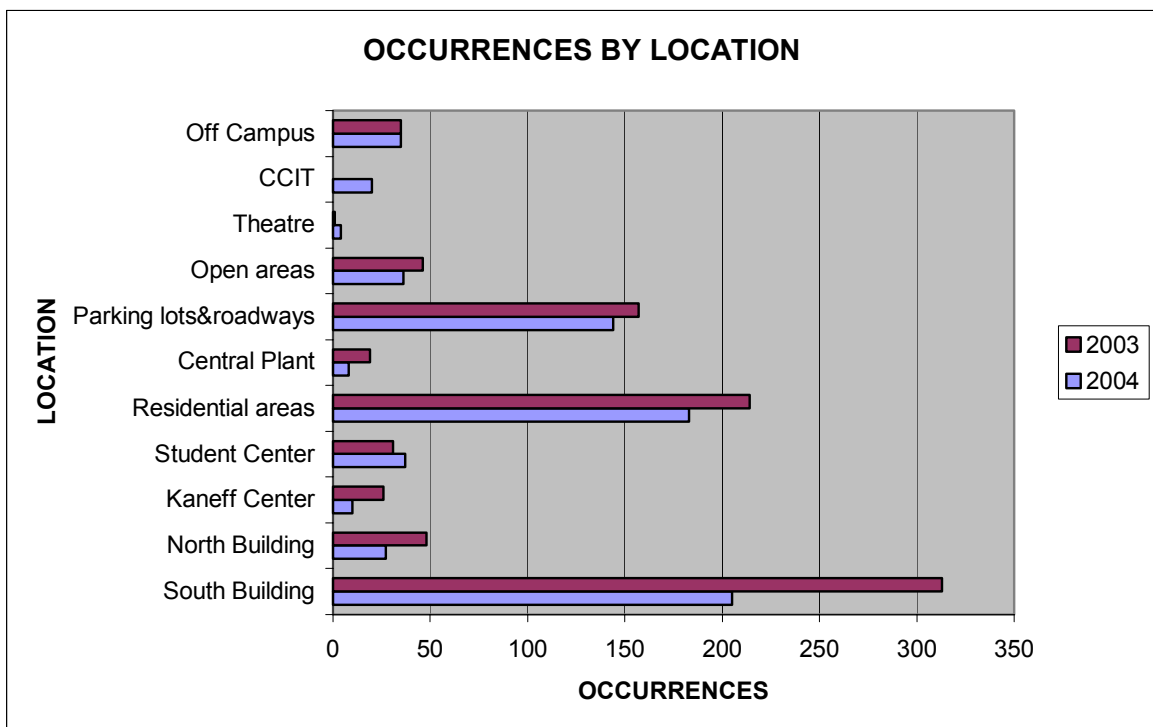
**0700-1500 Segment:** Occurrences of all types generated by population volume

**1500-2300 Segment:** Primarily incidents of crime, medical calls and security matters

**2300-0700 Segment:** Predominantly occurrences of behavioral nature and alarm response

### OCCURRENCES BY LOCATION

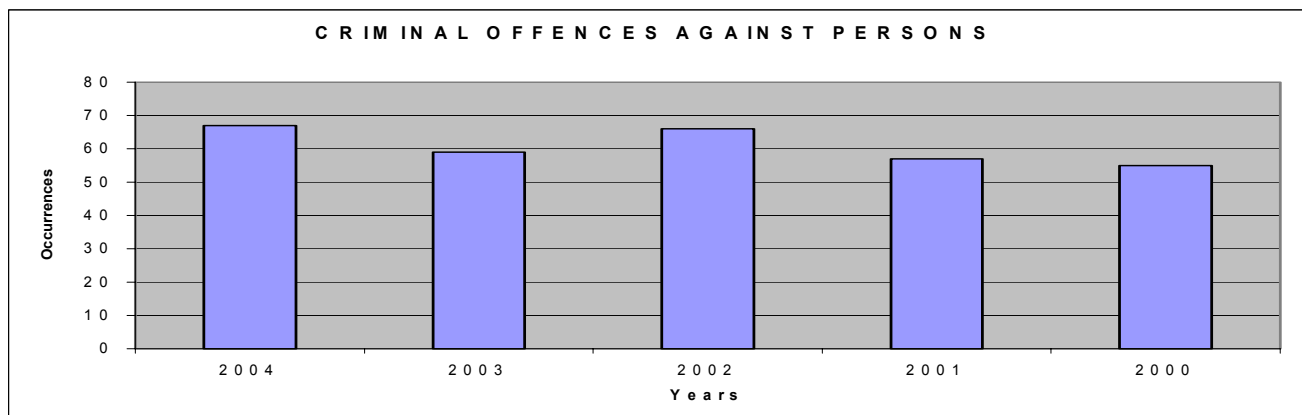
LOCATION	2004	2003
SOUTH BUILDING	205	313
NORTH BUILDING	27	48
KANEFF CENTER	10	26
STUDENT CENTER	37	31
CCIT	20	00
RESIDENTIAL AREAS	183	214
CENTRAL UTILITY PLANT	08	19
PARKING LOTS AND ROADWAYS	144	157
OPEN AREAS	36	46
THEATRE	04	01
OFF CAMPUS	35	35
TOTAL	709	890



## CRIMINAL OFFENCES AGAINST PERSONS

OFFENCE	2004	2003	2002	2001	2000	CHANGE 04/03
Assault	04	05	09	04	08	-01
Assault Causing bodily harm	00	01	00	00	00	-01
Assault with a weapon	01*	01	00	01	00	No change
Sexual assault	00	00	1+3*	02	01	No change
Criminal Harassment	09	09	09	13	18	No change
Threatening death	02	00	01	01	00	+02
Threatening safety	09	02	05	06	02	+07
Harassment by e-mail/phone	10	06	16	04	06	+04
Defamatory libel	01	00	03	00	00	+01
Causing a disturbance	10	18	10	10	06	-08
Impersonation	00	00	00	01	01	No change
Hate Graffiti	04	00	00	01	01	+04
Indecent act	00	03	00	01	00	-03
Controlled Drug and Substance Act	09**	05	05	11	04	+04
Trespass at night	02***	03	00	00	00	-01
Domestic dispute	05	04	04	02	08	+01
Possession of a weapon	00	01	00	00	00	-01
TOTAL	67	59	66	57	55	+08

\* Off campus \*\* One incident was for trafficking \*\*\* Both were for lurking near residences



## PROPERTY RELATED CRIMINAL OFFENCES

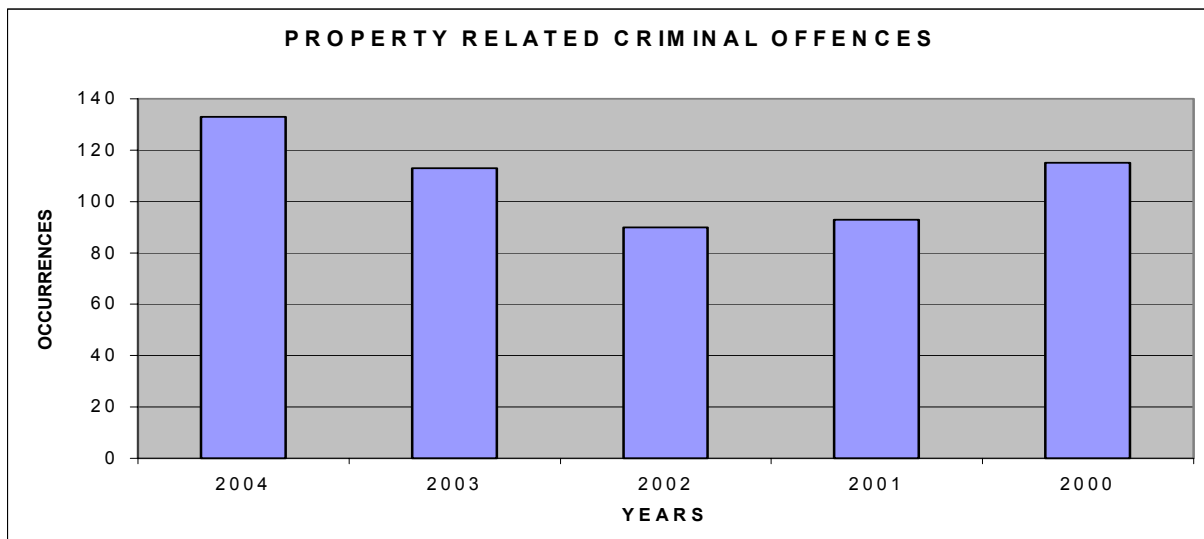
OFFENCE	2004	2003	2002	2001	2000	CHANGE 04/03
Theft under \$5000	79	64	47	41	57	+07
Theft over \$5000	00	02	02	03	02	-02
Break and enter	00	12	04	05	01	-12
Uttering forged currency	14	05	07	00	02	+09
Fraud (non-monetary)	04	03	00	07	06	+01
Mischief under \$5000	31	24	20	33	45	+07
Mischief over \$5000	00	00	00	01	01	No change
Bomb threat	01	01	00	01	00	No change
Possession of stolen property	04	00	00	00	01	+04
Public mischief	00	00	00	02	00	No change
<b>TOTAL</b>	<b>133</b>	<b>113</b>	<b>90</b>	<b>93</b>	<b>115</b>	<b>+20</b>

### Sub and grand cost of stolen items:

UTM property: \$10,016  
 Personal property: \$22,480  
 Grand total: \$32,496

### Sub and grand cost of damage caused by vandalism (Mischief)

UTM property: \$4,650    Personal property: \$ 4,120    Grand total: \$ 8,770

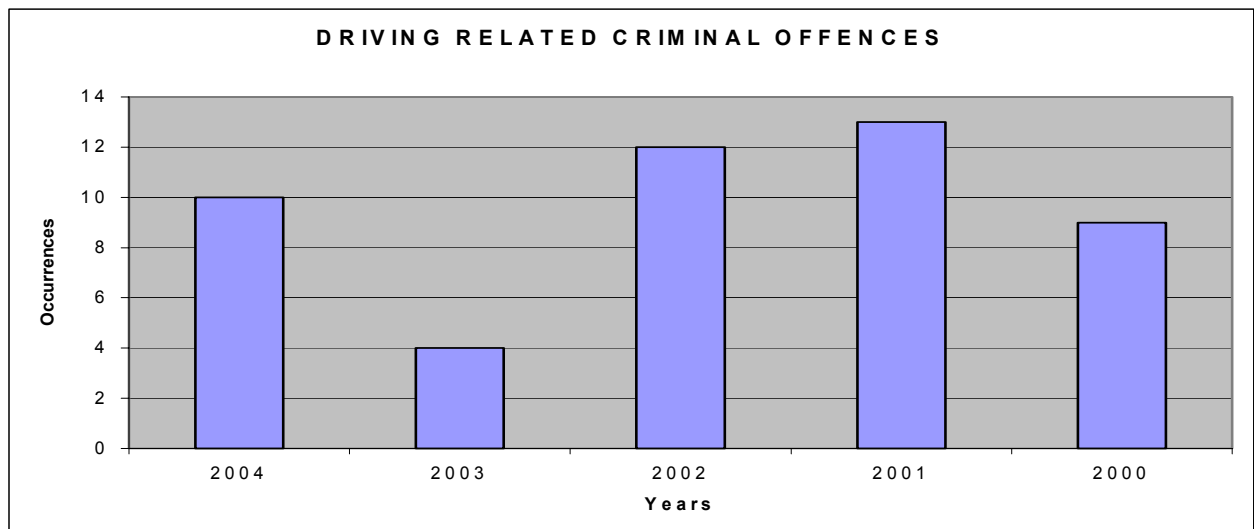




## DRIVING RELATED CRIMINAL OFFENCES

These are criminal offences involving the sobriety state of the driver, the manner in which a vehicle is driven, and the unauthorized departure from an accident.

OFFENCE	2004	2003	2002	2001	2000	CHANGE 04/03
Impaired driving	00	00	03	00	00	No change
Fail to remain	09	04	09	13	03	+05
Dangerous driving	01	00	00	00	06	+01
TOTAL	10	04	12	13	09	+06



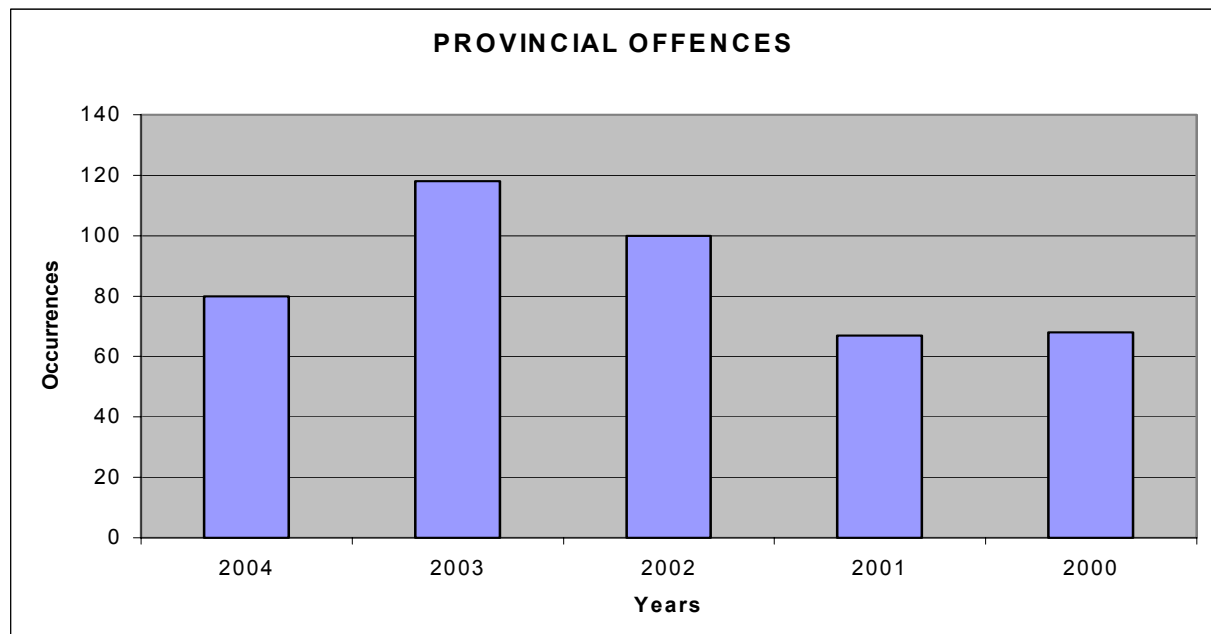
## PROVINCIAL OFFENCES

These are offences left for the Province of Ontario to enact into law. Three provincial acts were applicable to UTM in 2004. They are the Trespass to Property Act, the Liquor License Act and the Mental Health Act. Not enforceable on private property but included in this section is the Highway Traffic Act

OFFENCE	2004	2003	2002	2001	2000	CHANGE 04/03
Trespass to Property Act (T.P.A)	<b>26*</b>	67	53	25	25	-41
Liquor License Act (L.L.A.)	<b>12**</b>	12	13	12	09	No change
Mental Health Act	<b>05</b>	07	06	11	05	-02
Highway Traffic Act	<b>37</b>	32	28	19	29	+05
<b>TOTAL</b>	<b>80</b>	118	100	67	68	-38

\* Twelve tickets issued under the T.P.A

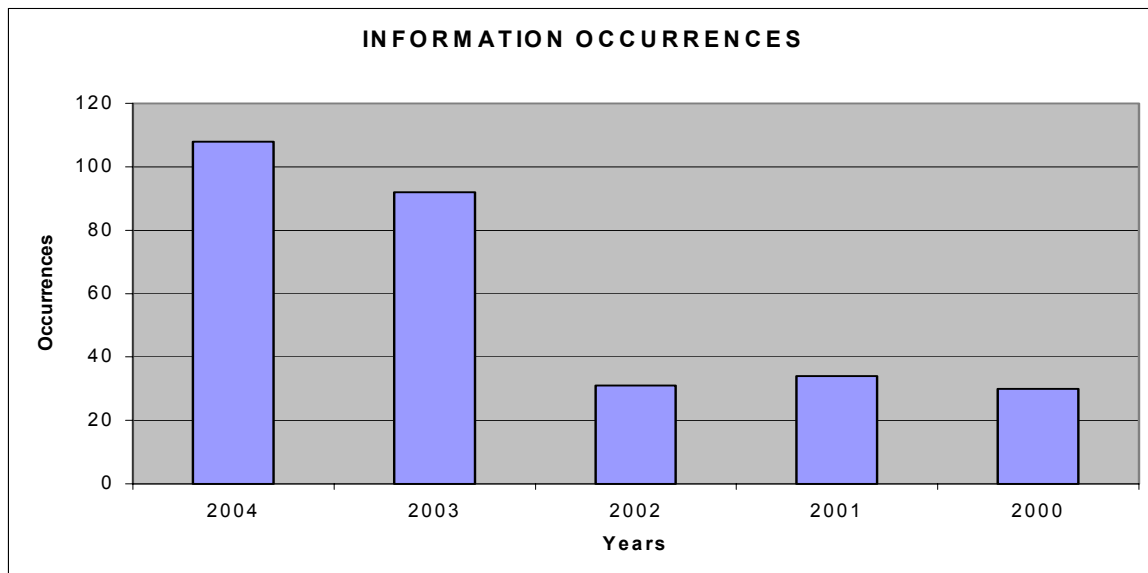
\*\* Eight tickets issued under the L.L.A.



## INFROMATION REPORTS

Occurrences that are about criminal activity, suspicious persons and suspicious circumstances.

INFORMATION	2004	2003	2002	2001	2000	CHANGE 04/03
TOTAL	108	92	31	34	30	+16



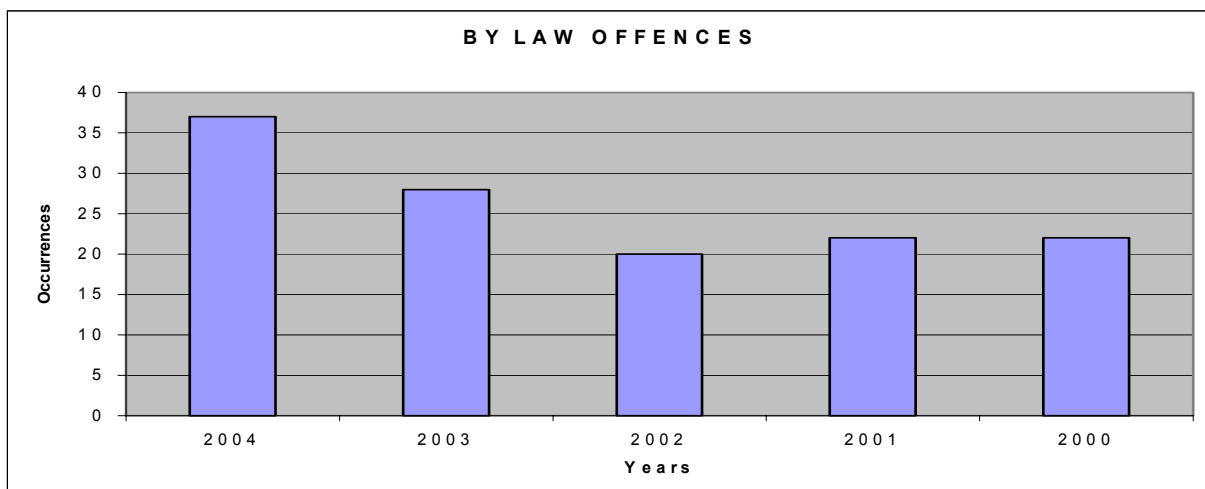
## BY-LAW OFFENCES

Offences left to the Municipality of the City of Mississauga to administer. Applicable to UTM is parking enforcement, nuisance type noise, Smoking infractions and animal control matters.

BY-LAW	2004	2003	2002	2001	2000	CHANGE 04/03
Unnecessary noise	33	25	16	22	18	+10
Animal control	00	03	04	00	04	-03
Smoking by-law	04	00	00	02	05	-04
TOTAL	37	28	20	22	22	+09

Parking violation	Tickets issued
Parked on private property without consent	4756
Parked in a fire route	096
Parked in handicapped space	07

Parking enforcement was shared between University Police and a contract security firm. On weekdays during the regular school season (September to April) Garda Security officers were assigned parking enforcement. University Police issued tickets throughout the year.



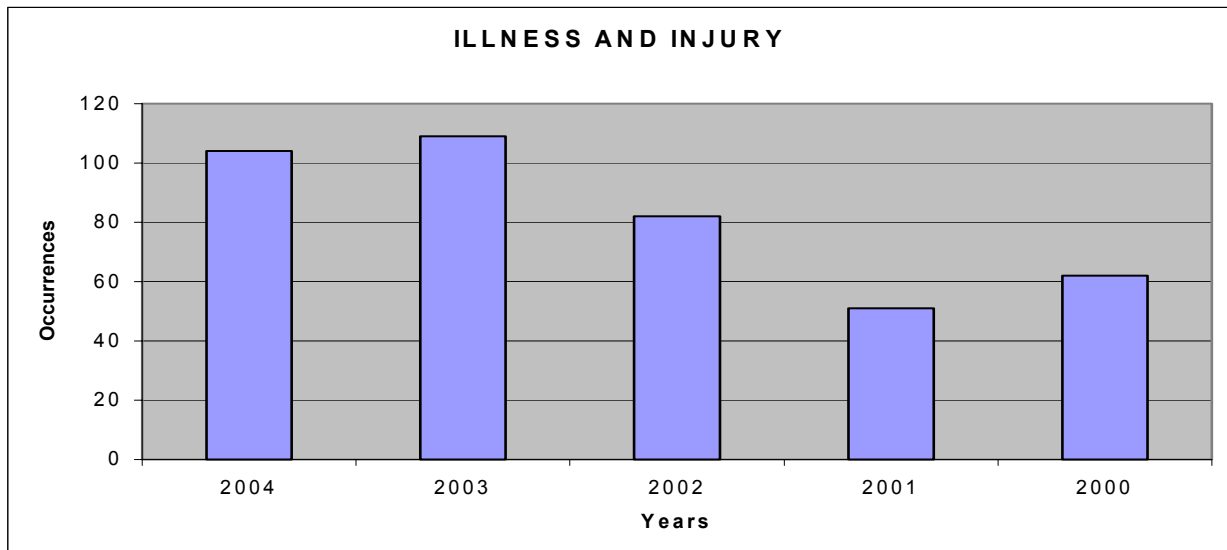
## ILLNESS AND INJURY

Medical calls due to personal illness or injury

TYPE	2004	2003	2002	2001	2000	CHANGE 04/03
Injury	<b>58*</b>	64	42	NA	NA	-06
Illness	<b>46**</b>	45	40	NA	NA	-01
TOTAL	<b>104</b>	109	82	51	62	-05

\* Most were sports related

\*\*One person died from a heart attack



## MISCELLANEOUS OCCURRENCES

Non-criminal situations that explain security, safety and maintenance issues

TYPE	2004	2003	2002	2001	2000	CHANGE 04/03
Missing person	04	03	05	05	00	+01
Insecure premise	32	126	37	61	55	-94
Intrusion alarm	48	76	41	92	75	-28
Call to service*	51	131	53	116	119	-80
Fire alarm	26	19	10	14	15	-07
Fire**	05	04	04	02	02	+01
Flood	01	02	08	02	14	-01
Power failure	02	01	01	01	03	+01
Chemical spill	00	00	01	01	01	No change
Live/dead animal	01	03	05	03	02	-02
TOTAL	170	367	165	297	286	-197

\* Off-hours calling in trades, UTM services and tow trucks

\*\* All reported fires, including two residence kitchen fires, were minor with minimal damage

