

# The Protocol

*Memorandum of Agreement between The University of Toronto,  
The Students' Administrative Council, The Graduate Students'  
Union and The Association of Part-time Undergraduate Students  
for a Long-Term Protocol on the Increase or Introduction of  
Compulsory Non-tuition Related Fees*

UT's *Protocol* was created in 1996 pursuant to the Ontario Ministry's requirement to establish "a formal agreement between the institution's administration and student government representatives which set out the means by which students will be involved in decisions to introduce a new or modify an existing compulsory non-tuition related ancillary fee.

## Campus Services

## Divisional Student Societies

## Cross-Divisional Student Societies\*

UTM Health Services

UTM Recreation & Athletics

UTM Student Services

Transit (shuttle)

Career Services

Academic Support

Student Buildings

(student group spaces)

Child Care Support

Family Care

Student Clubs & Funds

Student Handbook &  
Communications

Alcohol Ed & Monitoring

Int'l Student Support

UT-wide sport & physical  
activity\*

UT-wide Hart House\*

UTM Students' Union (UTMSU)

UTM Association of Graduate  
Students (UTMAGS)

UTM Athletic Council (UTMAC)

UTM Residence Council

UTM student radio CFRE

UTM student newspaper *The  
Medium*

MMPA Student Society

University of Toronto Students  
Union (UTSU)

Association of Part-Time  
Undergraduate Students (APUS)

University of Toronto Graduate  
Students' Union (UTGSU)

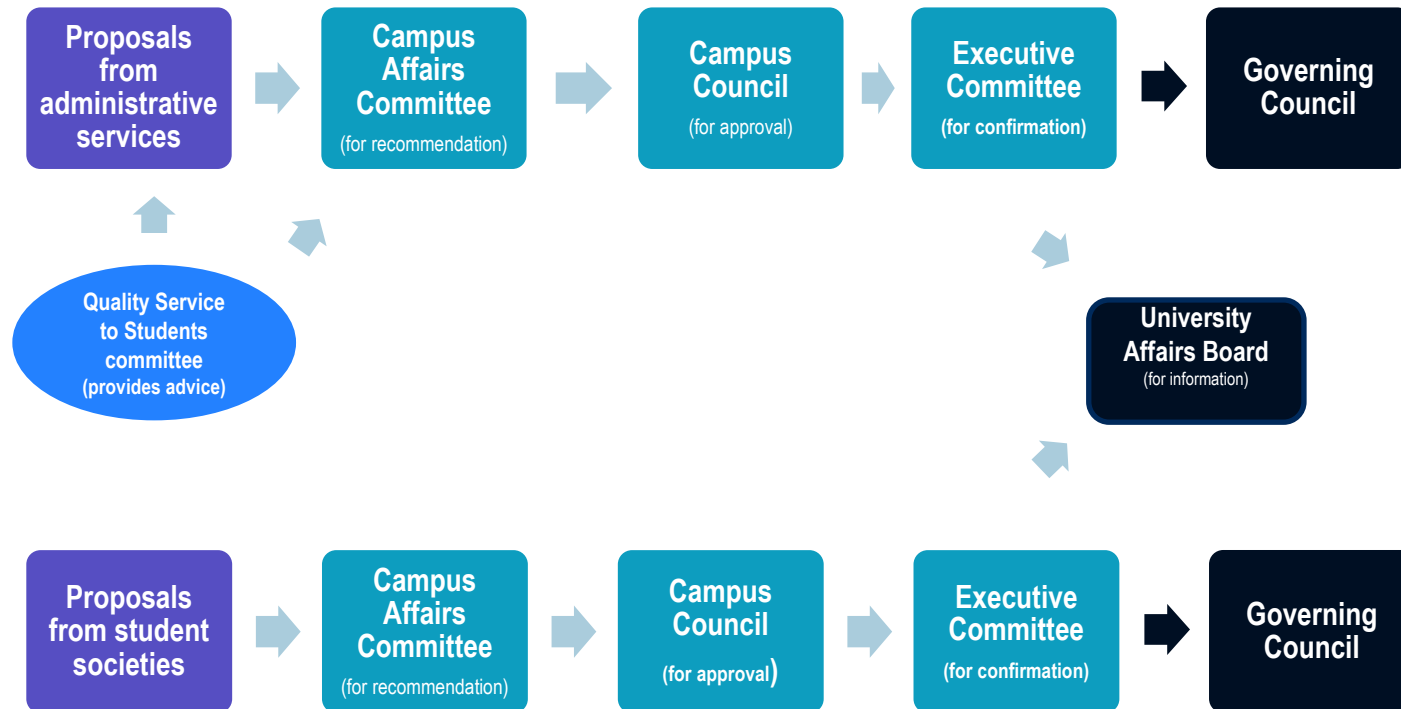
CIUT Community Radio

The Varsity

Medical Society



# Overview of Protocol Fees Processes



# Status

- Campus services completed consultations with users, students at large and the participating student governments through the QSS consultation process; directors/managers developed and presented proposals to QSS for consideration of endorsement.
- Voting at QSS occurred January 12, 2023:
  - the Health Services fee was not endorsed
  - the Recreation & Athletics Fee was not endorsed
  - the Student Services Fee was not endorsed
- The fees sought, although not endorsed by QSS, are within the amounts allowed by the Protocol, being a combination of permanent increases (within the Protocol's lesser index) and temporary, 3-year increases (within the Protocol's greater index)

# Proposed 2023-24 Fees for Consideration

	Current 2022-23 Fees	Proposed 2023-24 Fees	Proposed 2023-24 \$ Increase	Max allowed without QSS endorsement*
<b>Health Services</b>	\$60.15	\$62.16	\$2.01	\$99.99
<b>Athletics</b>	\$205.88	\$211.68	\$5.80	\$236.21
<b>SSF Bundle</b>	\$214.67	\$245.96	\$31.29	\$304.84
Shuttle Bus	\$58.00	\$60.15	\$2.15	
Career Centre	\$76.68	\$91.92	\$15.24	
Int'l Ed Centre	\$21.08	\$29.98	\$8.90	
Student Life Init's	\$21.56	\$29.86	\$8.30	
Student Space	\$27.67	\$28.65	\$0.98	
Child Care	\$7.65	\$3.35	-\$4.30	
Family Care	\$0.28	\$0.30	\$0.02	
Student Guides	\$0.44	\$0.44	0	
Alcohol Ed & Monitoring	\$1.31	\$1.31	0	

\* Maximum allowed calculated using Protocol-defined worksheet with specified Consumer Price Index and UT Index calculations

# Comparison of 2022-23 Student Service Fees

	UTM	UTSC	St. George
Health Services	\$60.15	\$79.35	\$87.36
Athletics*	\$205.88	\$144.51	\$200.77
SSF Bundle**	\$214.67	\$196.86	\$217.45
Total	\$480.70	\$420.72	\$505.58

\*UTSC's recreation & athletics costs are off-set through its jointly owned and operated facility partnership with the City of Toronto.

\*\*UTM's SSF Bundle includes \$58.00 for unlimited fare-free ridership of the UTM Shuttle Bus service, neither charged nor available to UTSC or St. George students or others.

# Proposed 2023-24 Fees for Consideration

	Current 2022-23 Fees	Proposed 2023-24 Fees	Proposed 2023-24 \$ Increase	Max allowed without QSS endorsement*
<b>Health Services</b>	\$60.15	\$62.16	\$2.01	\$99.99
<b>Athletics</b>	\$205.88	\$211.68	\$5.80	\$236.21
<b>SSF Bundle</b>	\$214.67	\$245.96	\$31.29	\$304.84
Shuttle Bus	\$58.00	\$60.15	\$2.15	
Career Centre	\$76.68	\$91.92	\$15.24	
Int'l Ed Centre	\$21.08	\$29.98	\$8.90	
Student Life Init's	\$21.56	\$29.86	\$8.30	
Student Space	\$27.67	\$28.65	\$0.98	
Child Care	\$7.65	\$3.35	-\$4.30	
Family Care	\$0.28	\$0.30	\$0.02	
Student Guides	\$0.44	\$0.44	0	
Alcohol Ed & Monitoring	\$1.31	\$1.31	0	

\* Maximum allowed calculated using Protocol-defined worksheet with specified Consumer Price Index and UT Index calculations