

INSPIRING INCLUSIVE EXCELLENCE

UTSC Campus Strategic Priorities
UTSC Campus Council
March 8, 2023

BUDGETS

▪ Operating Fund Budget

- Student tuition and government grants for academic and administrative expenses

▪ Student Service Fees

- For student programming and services

▪ Ancillary Budgets

- Funded exclusively by the users of the service

UTSC CAMPUS STRATEGIC PRIORITIES



- Continue to invest in faculty and diversity hiring
- Supporting domestic enrolment
- Completion of student enhancement projects
- Development of indicator framework
- Building partnerships with other faculties – interdivisional teaching
- Occupy and operationalize new buildings
- Developing programs to support life sciences growth

CONTINUE TO INVEST IN FACULTY AND DIVERSITY HIRING

Our faculty complement planning reflects our commitment to excellence and inclusion. It is meant to strengthen teaching and scholarship in areas of established and emerging strength, while advancing our commitment to the Pathway to Parity program, through which the Black and Indigenous composition of the faculty complement will better reflect the population we serve. The plan will support various campus initiatives, including the following:

- Scarborough Academy of Medicine and Integrated Health (SAMIH) and the necessary growth in undergraduate education in the life sciences
- The recent Working Circle Curriculum Review and its call for continued attention to educational access and decolonizing and anti-racist education; and
- Three research institutes as part of, GTA-RISE (Globalization, Transnationalism and the Advancement of Resilient, Inclusive Societies and Ecosystems).



SUPPORT DOMESTIC ENROLMENT

We plan to meet our domestic target in 2023 by increasing admission capacity in high demand programs

We will continue to enhance our yield by:

- Deploying, in the next admission cycle, more predictive yield models for Mathematics and Statistics
- Refining alternate offer messaging and process direct students into cognate programs with potential for higher yield
- Replicating the success of our international student ambassador program in domestic recruitment.
- Partnering with the University Registrar's Office to ensure that UTSC admitted students have access to their full funding package information (including scholarships and UTAPS) before the deadline to accept offers.

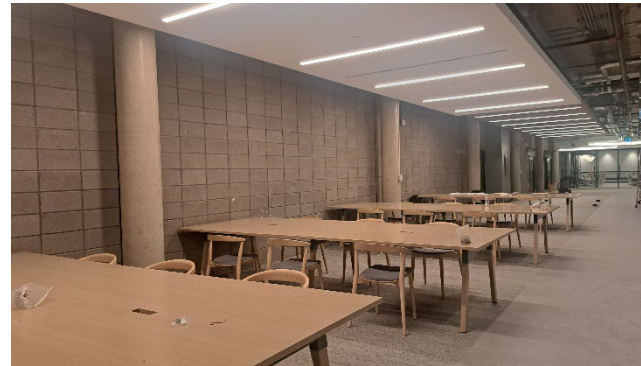
Continue to expand our marketing and brand awareness efforts

Growing excitement for the Scarborough Area

COMPLETION OF STUDENT ENHANCEMENT PROGRAMS

Library/ Learning Commons:

- Library/ Learning Commons Phase 4 Renos: to include reading room, open and group study spaces and archival storage and access spaces
- Laboratory and research space renovations. Phases 1&2 complete. Phases 4&5 under construction
- Teaching and learning spaces, including new models of active and technology enhanced learning
- Student and public space amenities, including landscape and public realm improvements

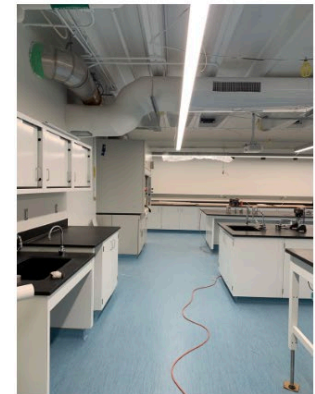


Bio Sci Teaching Labs:



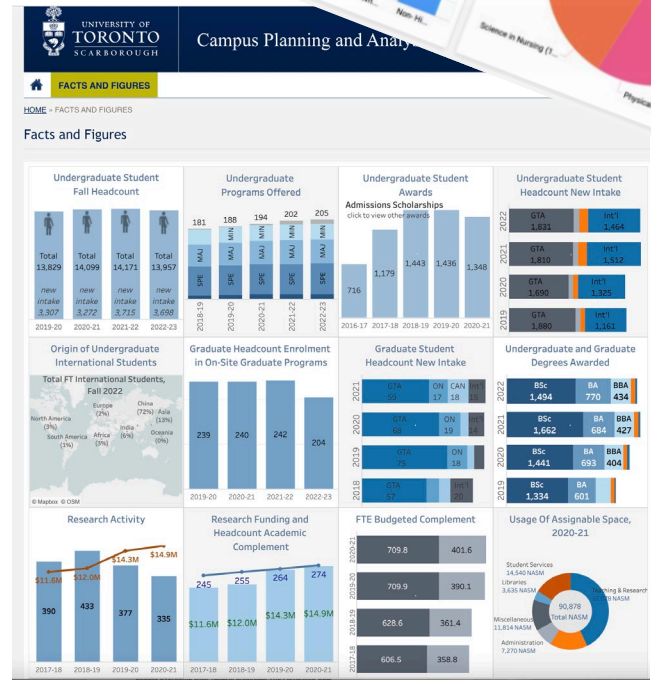
Before :

After:



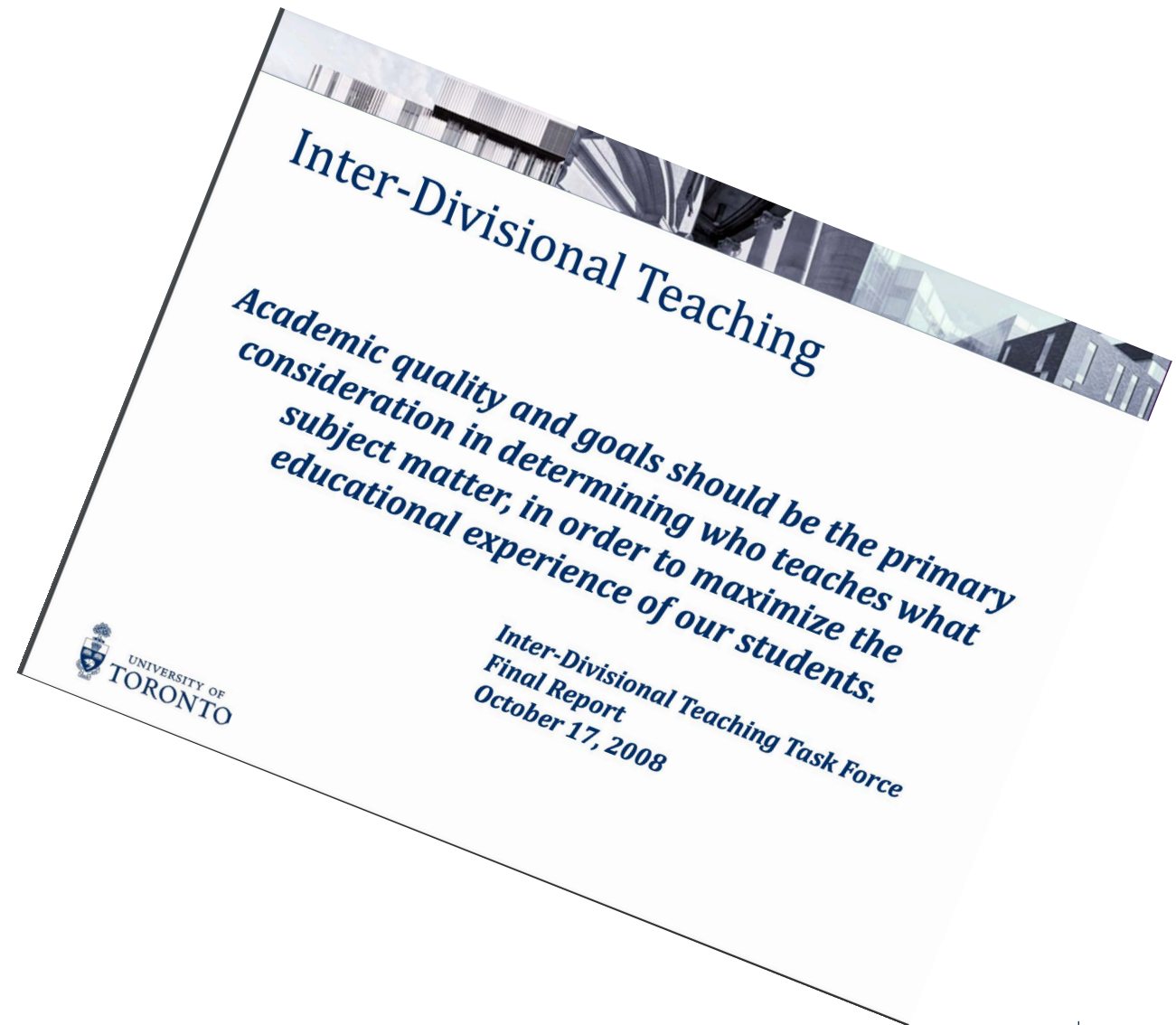
DEVELOPMENT OF INDICATOR FRAMEWORK

- Development of Clear indicators that measure progress of UTSC Inspiring Inclusive Excellence Strategic Plan



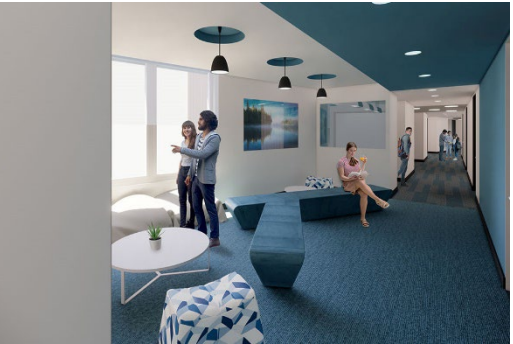
BUILDING PARTNERSHIPS WITH OTHER FACULTIES – INTERDIVISIONAL TEACHING (IDT)

We anticipate IDT opportunities with the professional faculties associated with SAMIH in the delivery of our undergraduate programming, especially those related to the life science enrollment growth.



OCCUPY AND OPERATIONALIZE NEW BUILDINGS

Student Residence



Instructional Centre 2



Indigenous House



DEVELOPING PROGRAMS TO SUPPORT LIFE SCIENCES GROWTH

- The NEW SAMIH program has also award UTSC 300 Graduating life science students per year at steady state
- We expect to enhance our faculty complement in the life sciences in anticipation of the completion of The Scarborough Academy of Medicine and Integrated Health (SAMIH) and the necessary growth in undergraduate education in the life sciences.
- Over the next five years, SAMIH will require additional investment in health sciences and health-related social sciences and humanities faculty, as well as administrative staff to support curriculum development and delivery, research and innovation, clinical services and training, and student support.
- Planned hires include, for example, positions that will increase teaching capacity and enhance pedagogical innovation in the life sciences.

