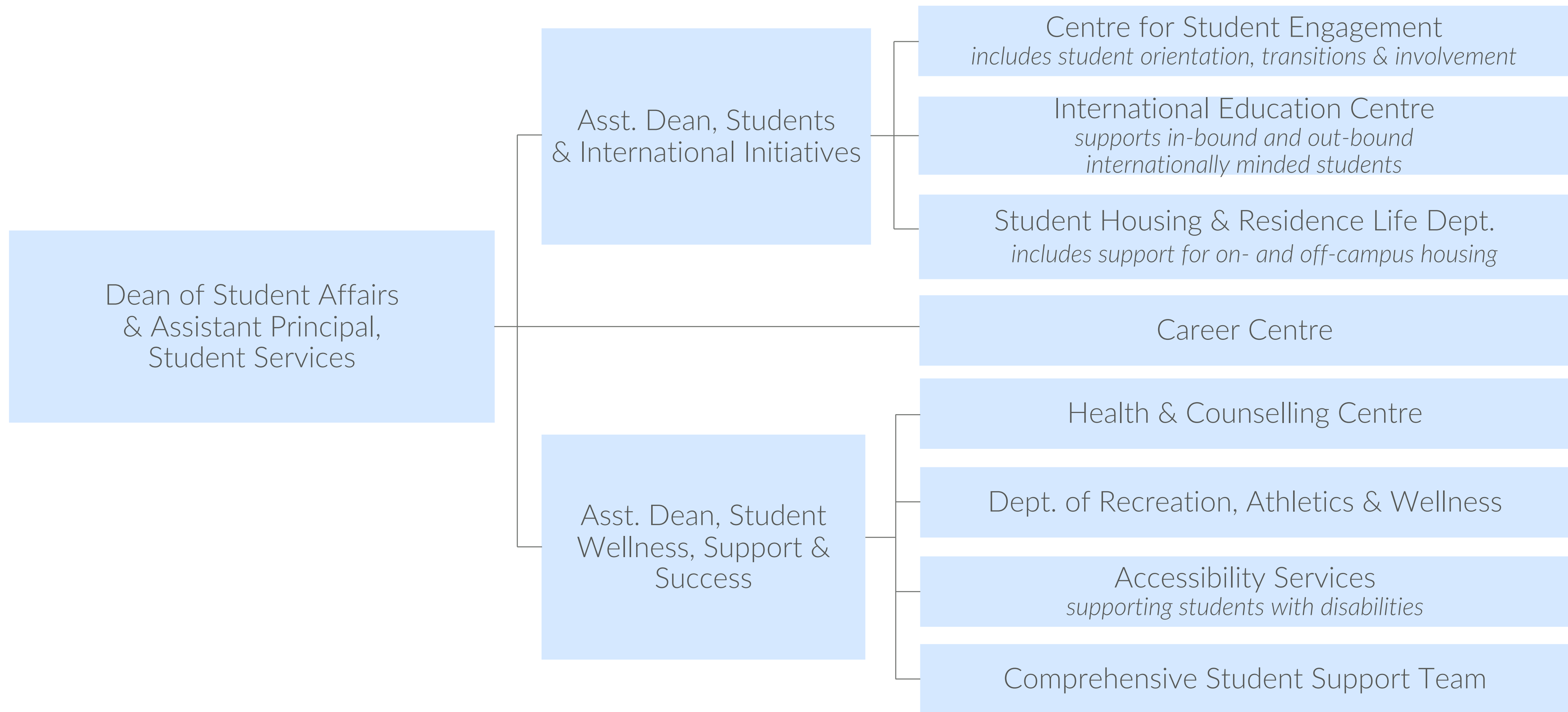


STUDENT AFFAIRS & SERVICES

ADMINISTRATIVE STRUCTURE



STUDENT AFFAIRS & SERVICES

KEY PORTFOLIO CHALLENGES AND GOALS FOR 2022-23

- Prepare for Fall 2023 opening of new *Student Services Hub* on Davis Bldg. main floor, with expanded and enhanced space for Accessibility Services, Career Centre, Centre for Student Engagement, International Education Centre, and Wellness Outreach, and a new First Stop service to untangle complex issues and support an even greater student experience
- Open expanded Health & Counselling Centre *medical clinic* in Davis Bldg. (adjacent to current clinic space) in Summer 2023, following the recent opening of the HCC's expanded *counselling suite*
- Continue fulfilling Housing Master Plan recommendations to add a new first-year residence to keep pace with UT's first-year housing guarantee, and upgrade and renovate townhouses
- Accelerate planning for UTM RecZone outdoor fields and courts expansion to meet students' recreation, sport and wellness interests
- Support phased launch of Support - Engage - Experience (SEE) partnership with Peel District School Board, to increase PSE access for high school students who are black, Indigenous and/or have disabilities

The Program

- For students in grade 11 or 12 enrolled in U/M courses (university pathway)
- Co-op placements on campus and other experiential learning activities at UTM
- Opportunity to earn 0.5 University Credit
- On-going peer-to-peer mentorship provided by current UTM students
- Experience UTM and post-secondary campus life through organized initiatives throughout the semester on-campus



Schools & PDSB Partnership

Meadowvale S.S.	Fletcher Meadow S.S.
12 student placements available	12 student placements available
SVI 37.6% (Cluster 2)	SVI 40.5% (Cluster 3)
51.5% Racialized Groups	80.8% Racialized Groups



2022 Participant Eligibility

- Self-identify as Black, Black African, Afro-Caribbean, Latinx Black
- Canadian Citizen, Permanent Resident
- Enrolled as a full-time student at **Meadowvale or Fletcher's Meadow Secondary School**
- Possess an overall academic average of at least 70%
- Enrolling or enrolled in English ENG3U or ENG4U with an expected grade of 70% or higher