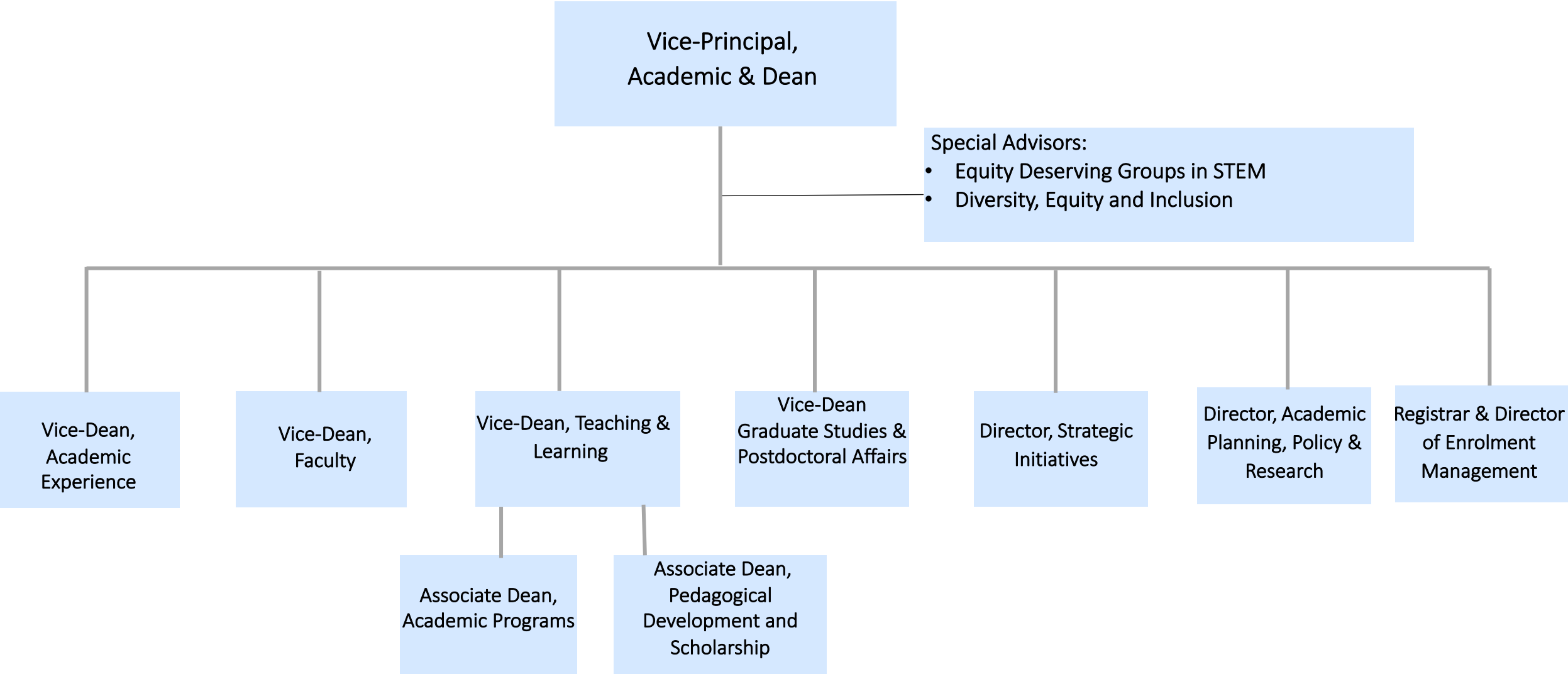




Report for the UTM Campus Council October 3, 2022

OFFICE OF THE DEAN

ADMINISTRATIVE STRUCTURE



Priorities of the 2022-23 Academic Year

- Creating Self-Study Report and overseeing UTM's Provostial Review
- Improving access to Sustainability/Climate Change education at UTM
- Unpacking Retention Patterns at UTM and Creating new Retention Strategies
- Minimize Impact of Budget Concerns on the Academic Plan (current and future)

Overview of UTM Fall Enrollment 2022

Newly Admitted:

Domestic: 2705 registered (2593 FT, 112 PT)

International: 760 registered (744 FT, 16 PT)

Total: 3465 (with 128 only PT at the moment)

Returning Students:

Domestic: 8264 registered (7230 FT, 1034 PT)

International: 3535 registered (3117 FT, 418 PT)

Total: 11,799 (with 1452 only PT at the moment)

Total registered: 15,264 headcount