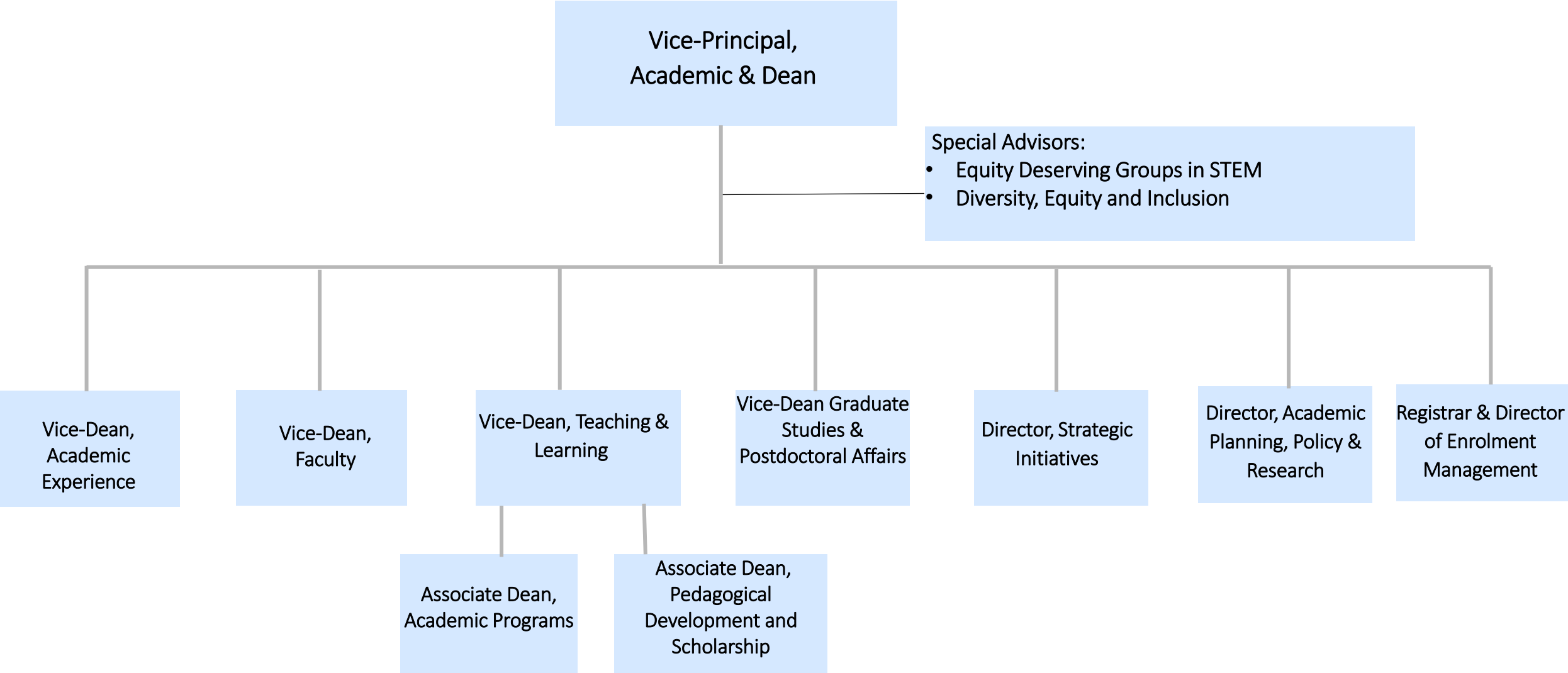




Report for the UTM Campus Affairs Committee September 13, 2022

OFFICE OF THE DEAN

ADMINISTRATIVE STRUCTURE



Priorities of the 2022-23 Academic Year

- Creating Self-Study Report and overseeing UTM's Provostial Review
- Improving access to Sustainability/Climate Change education at UTM
- Unpacking Retention Patterns at UTM and Creating new Retention Strategies
- Minimize Impact of Budget Concerns on the Academic Plan (current and future)

Overview of UTM Fall Enrollment 2022

Newly Admitted:

Domestic: 2697 registered (2573 FT, 124 PT)

International: 785 registered (764 FT, 21 PT)

Total: 3482 (with 145 only PT at the moment)

Returning Students:

Domestic: 8064 registered (6989 FT, 1076 PT)

International: 3502 registered (3030 FT, 476 PT)

Total: 11566 (with 1552 only PT at the moment)

Total registered: 15053 headcount