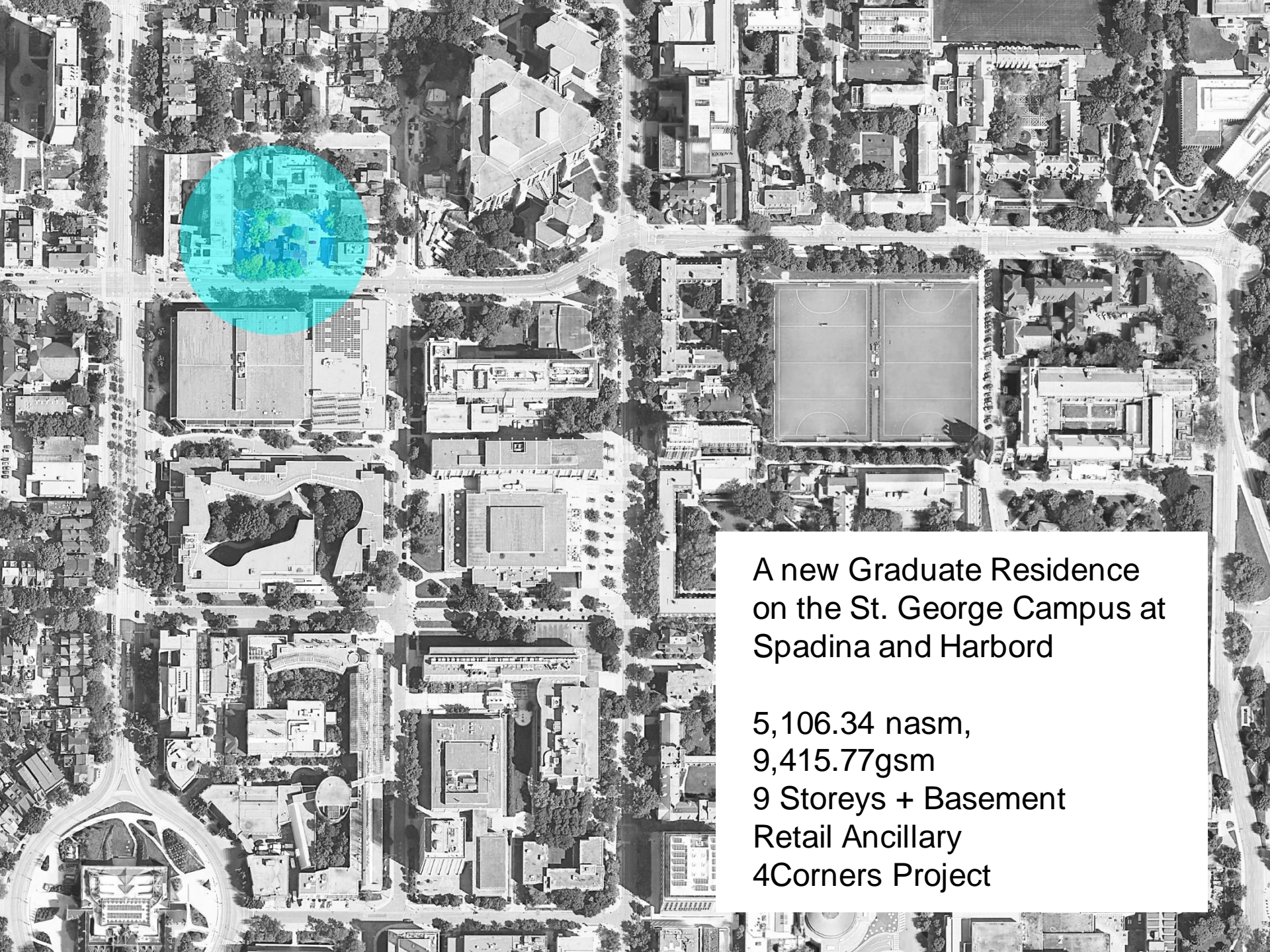




## **Harbord Residence: A New Graduate Residence on Harbord Street**

February 28, 2022



A new Graduate Residence  
on the St. George Campus at  
Spadina and Harbord

5,106.34 nasm,  
9,415.77gsm  
9 Storeys + Basement  
Retail Ancillary  
4Corners Project



View from the South-East



View from the North-East



Ground Floor Plan



## Appendix

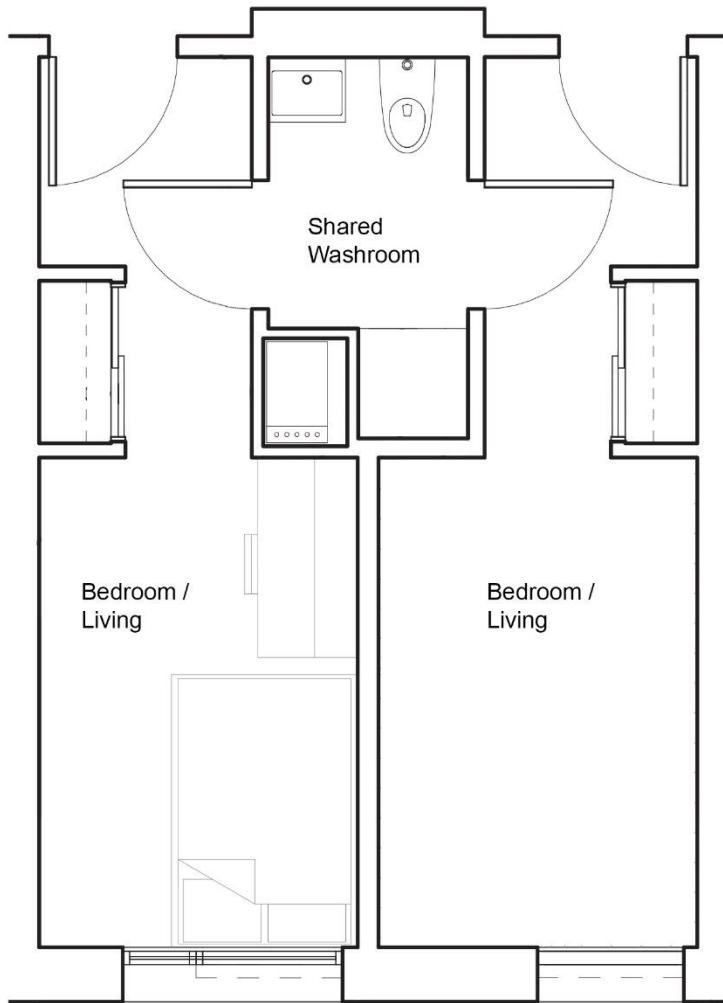


East Elevation / Living Lane

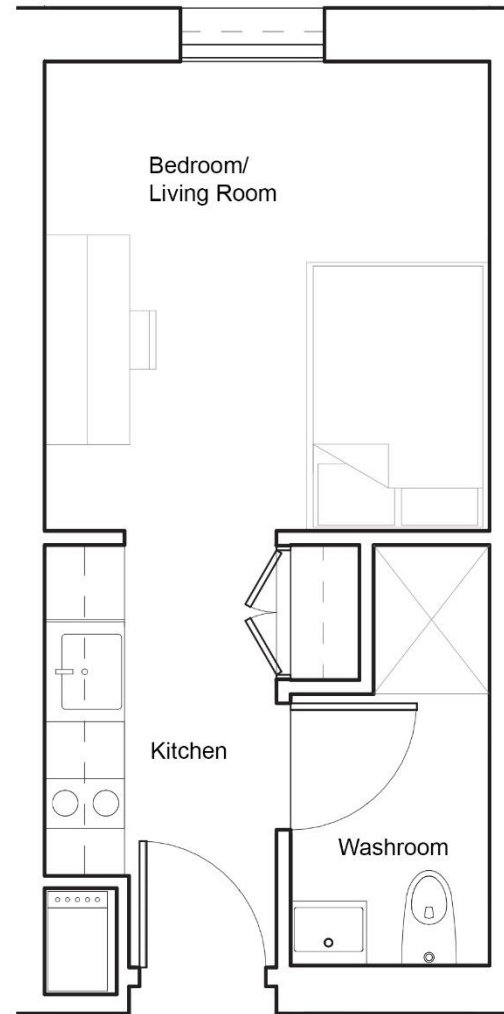
Residential Units  
Levels 2-9

<b>Unit Type</b>	<b>No. of Beds</b>
Standard Unit (Shared Washroom)	136
Standard Unit (Accessible)	24
Nomad Unit (Private)	18
Nomad (Accessible) Unit	6
Residence Advisor Suite (Accessible)	4
<b>Total Beds</b>	<b>188</b>
<b>Total Accessible Beds</b>	<b>34</b>





**Standard Unit**  
(2 beds, 1 shared washroom)



**Nomad Unit**  
(1 bed, 1 private washroom, kitchen)

Amenities  
Levels B-9

Amenity	Quantity
Laundry	1
Music Practice Room	3
Bicycle Storage & Maintenance	1
Food Market	1
Cafe	1
Event Space	1
Common Lounge	3
Quiet Study Lounge	3
Common Kitchen	1
Meeting Room / Group Study Room	3
Boardroom	1
Residential Floor Lounge	4
Roof Terrace	2



Basement Plan



Second Floor Plan



Third Floor Plan