

A photograph of a modern university campus in Mississauga, Ontario. The scene features several multi-story buildings with a mix of brick, wood paneling, and large glass windows. A paved walkway leads through a green lawn area with young trees and some bare trees with autumn leaves. A person is walking away from the camera on the path. The sky is clear and blue.

University of Toronto Mississauga Campus Master Plan

Governing Council Meeting – February 15th, 2022

Brook McIlroy in association with

HDR WOOD RWDI

Dougan & Associates

ERA Architects

Vision and Guiding Principles

UTM's Campus Master Plan supports the design of sustainable, high-quality buildings and spaces that embrace natural ecological settings; that promote community health, connection, and flourishing; and that enable aspirations in research, teaching and reciprocal civic engagement.

Sustainability



1 Promote Health & Resilience



2 Embrace Ecology



3 Diversify Learning Environments

Connection



4 Strengthen Community Synergies



5 Encourage Multi-Modal Movement



6 Design Physical & Visual Connections

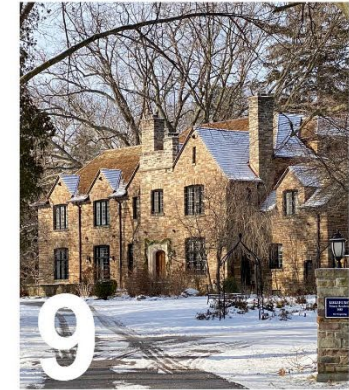
Vitality



7 Enable Placemaking



8 Empower Vibrant Experiences



9 Respect Cultural Heritage Value

Key Campus Master Plan moves include:

1. Identify potential future development sites
2. Create a landmark building and plaza
3. Redevelop and extend Middle Road
4. Create a flexible outdoor campus commons (Campus Green)
5. Reinforce the Riparian Ribbon as a pedestrian connection
6. Create Academic Quad and Cultural Commons
7. Expand and consolidate athletic uses
8. Establish 'shared streets'
9. Incorporate a new cycle track and cycling infrastructure



Key Campus Master Plan moves include:

1. Identify potential future development sites
2. **Create a landmark building and plaza**
3. Redevelop and extend Middle Road
4. Create a flexible outdoor campus commons (Campus Green)
5. Reinforce the Riparian Ribbon as a pedestrian connection
6. Create Academic Quad and Cultural Commons
7. Expand and consolidate athletic uses
8. Establish 'shared streets'
9. Incorporate a new cycle track and cycling infrastructure

Site CC-2 New Arrival Building and Plaza. Concept is illustrative.



Key Campus Master Plan moves include:

1. Identify potential future development sites
2. Create a landmark building and plaza
- 3. Redevelop and extend Middle Road**
4. Create a flexible outdoor campus commons (Campus Green)
5. Reinforce the Riparian Ribbon as a pedestrian connection
6. Create Academic Quad and Cultural Commons
7. Expand and consolidate athletic uses
8. Establish 'shared streets'
9. Incorporate a new cycle track and cycling infrastructure

Middle Road Pedestrian Street. Concept is illustrative.



Key Campus Master Plan moves include:

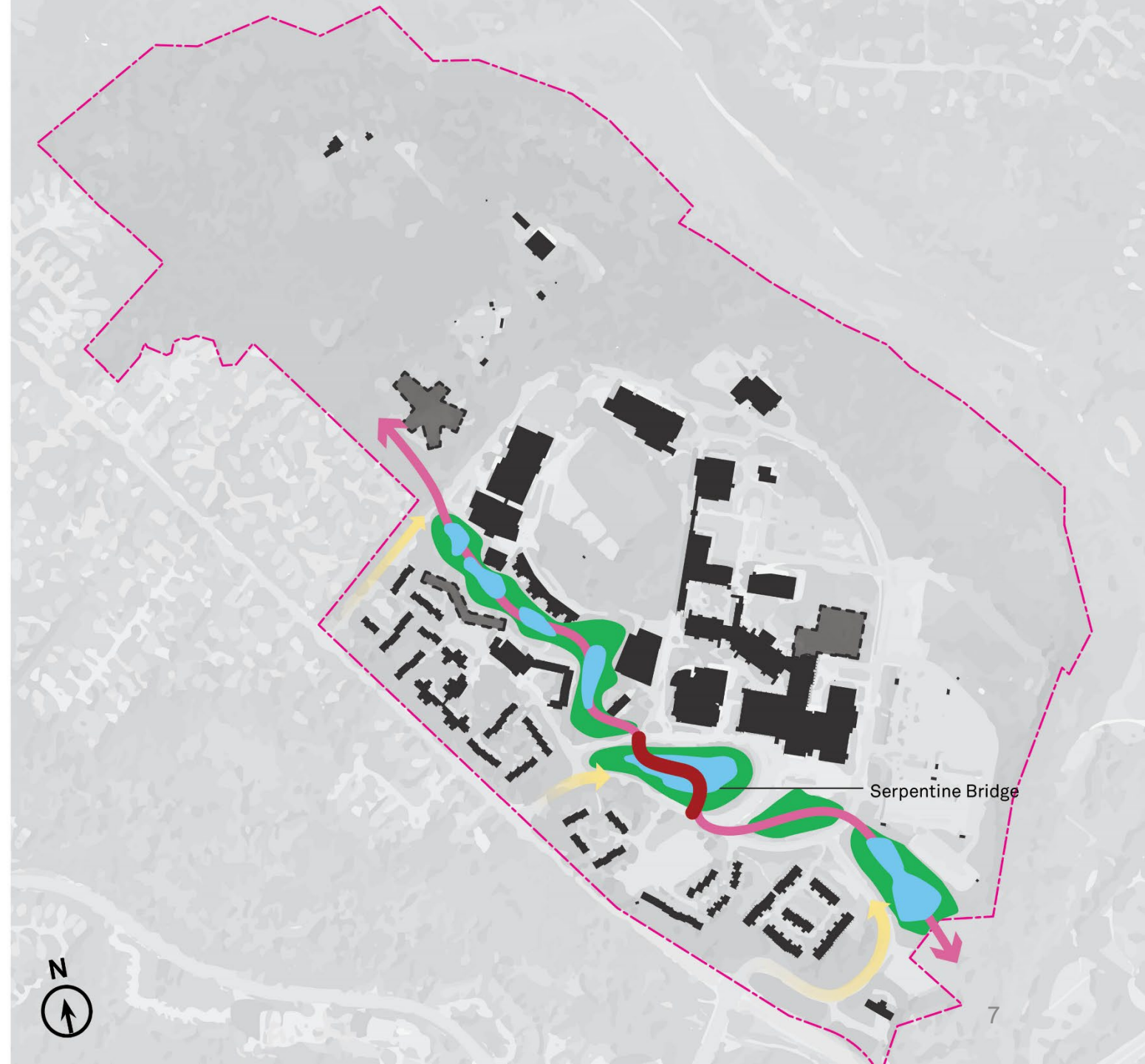
1. Identify potential future development sites
2. Create a landmark building and plaza
3. Redevelop and extend Middle Road
4. **Create a flexible outdoor campus commons (Campus Green)**
5. Reinforce the Riparian Ribbon as a pedestrian connection
6. Create Academic Quad and Cultural Commons
7. Expand and consolidate athletic uses
8. Establish 'shared streets'
9. Incorporate a new cycle track and cycling infrastructure

Site CC-1 Campus Green & Pavilion. Concept is illustrative.



Key Campus Master Plan moves include:

1. Identify potential future development sites
2. Create a landmark building and plaza
3. Redevelop and extend Middle Road
4. Create a flexible outdoor campus commons (Campus Green)
- 5. Reinforce the Riparian Ribbon as a pedestrian connection**
6. Create Academic Quad and Cultural Commons
7. Expand and consolidate athletic uses
8. Establish 'shared streets'
9. Incorporate a new cycle track and cycling infrastructure



Cultural Commons open space. Concept is illustrative.

Key Campus Master Plan moves include:

1. Identify potential future development sites
2. Create a landmark building and plaza
3. Redevelop and extend Middle Road
4. Create a flexible outdoor campus commons (Campus Green)
5. Reinforce the Riparian Ribbon as a pedestrian connection
- 6. Create Academic Quad and Cultural Commons**
7. Expand and consolidate athletic uses
8. Establish 'shared streets'
9. Incorporate a new cycle track and cycling infrastructure

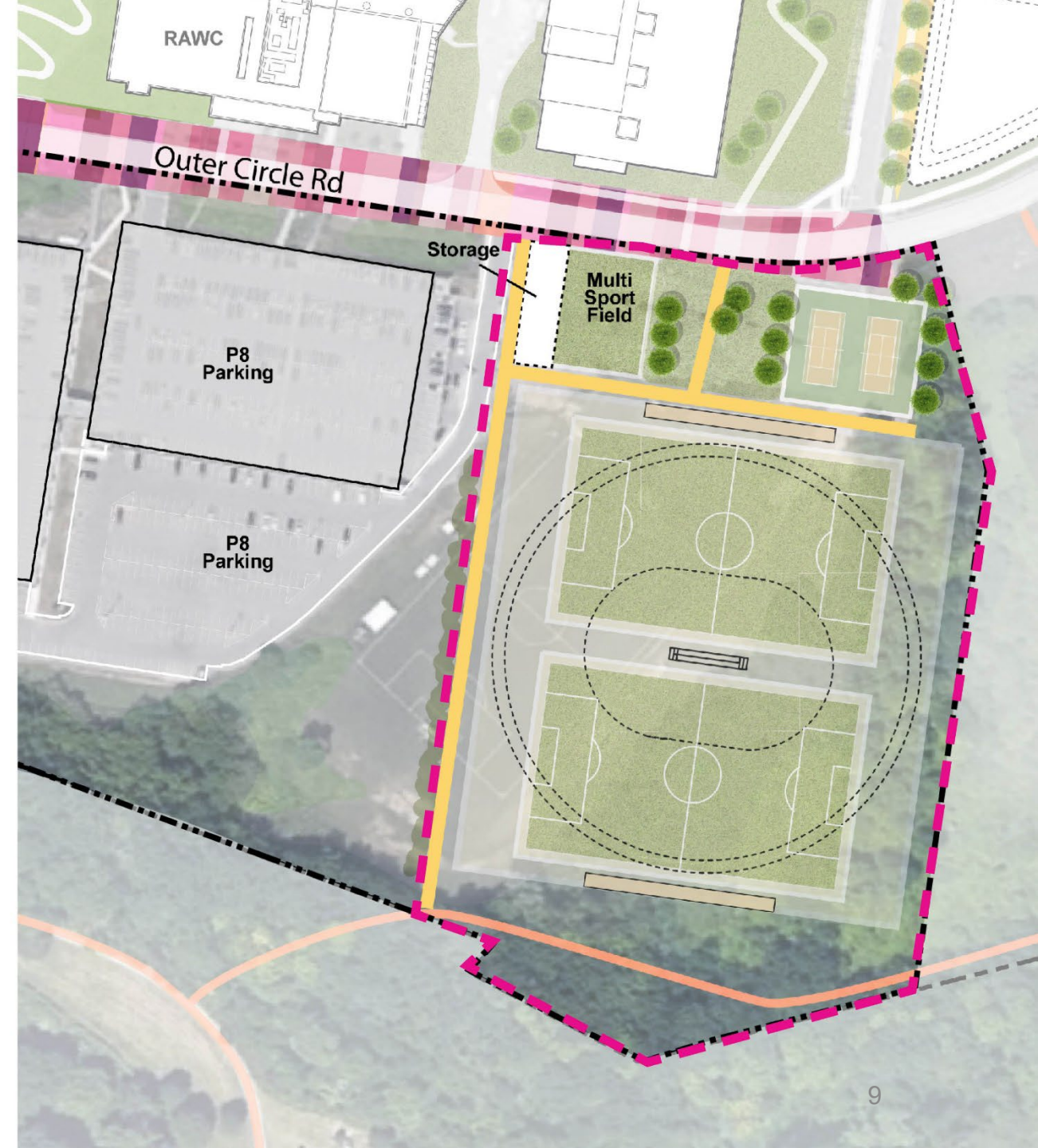
Site CC-10 Development & Academic Quad. Concept is illustrative.



Key Campus Master Plan moves include:

1. Identify potential future development sites
2. Create a landmark building and plaza
3. Redevelop and extend Middle Road
4. Create a flexible outdoor campus commons (Campus Green)
5. Reinforce the Riparian Ribbon as a pedestrian connection
6. Create Academic Quad and Cultural Commons
- 7. Expand and consolidate athletic uses**
8. Establish 'shared streets'
9. Incorporate a new cycle track and cycling infrastructure

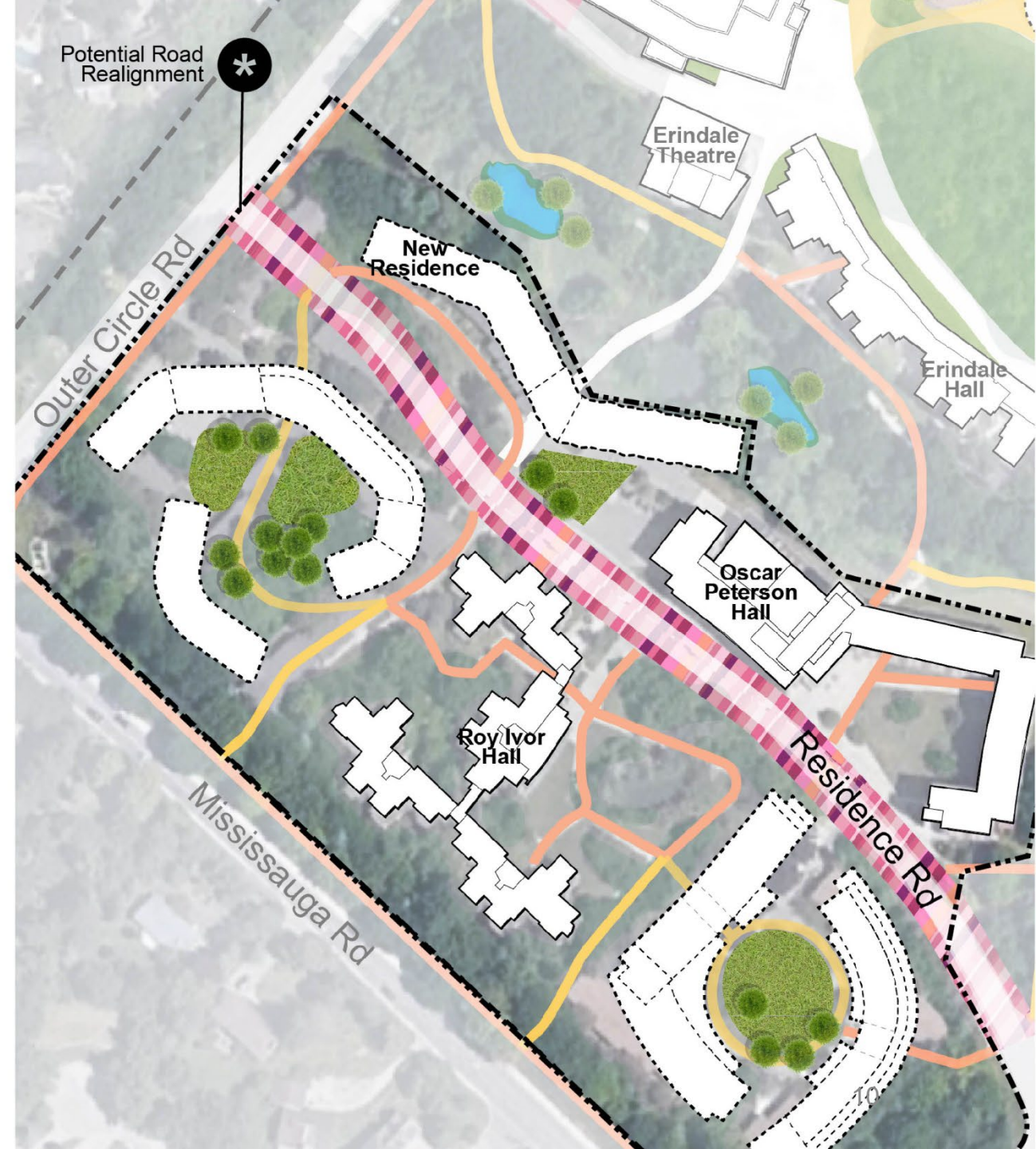
The South Field expansion. Concept is illustrative.



Key Campus Master Plan moves include:

1. Identify potential future development sites
2. Create a landmark building and plaza
3. Redevelop and extend Middle Road
4. Create a flexible outdoor campus commons (Campus Green)
5. Reinforce the Riparian Ribbon as a pedestrian connection
6. Create Academic Quad and Cultural Commons
7. Expand and consolidate athletic uses
- 8. Establish 'shared streets'**
9. Incorporate a new cycle track and cycling infrastructure

Residence Road Realignment & Shared Street. Concept is illustrative.



Key Campus Master Plan moves include:

1. Identify potential future development sites
2. Create a landmark building and plaza
3. Redevelop and extend Middle Road
4. Create a flexible outdoor campus commons (Campus Green)
5. Reinforce the Riparian Ribbon as a pedestrian connection
6. Create Academic Quad and Cultural Commons
7. Expand and consolidate athletic uses
8. Establish 'shared streets'
- 9. Incorporate a new cycle track and cycling infrastructure**

-  Cycle Track
-  Cycle Track (Potential Future Road Alignment)

