

The Protocol

*Memorandum of Agreement between The University of Toronto,
The Students' Administrative Council, The Graduate Students'
Union and The Association of Part-time Undergraduate Students
for a Long-Term Protocol on the Increase or Introduction of
Compulsory Non-tuition Related Fees*

UT's *Protocol* was created in 1996 pursuant to the Ontario Ministry's requirement to establish "a formal agreement between the institution's administration and student government representatives which set out the means by which students will be involved in decisions to introduce a new or modify an existing compulsory non-tuition related ancillary fee.

Campus Services

Divisional Student Societies

Cross-Divisional Student Societies*

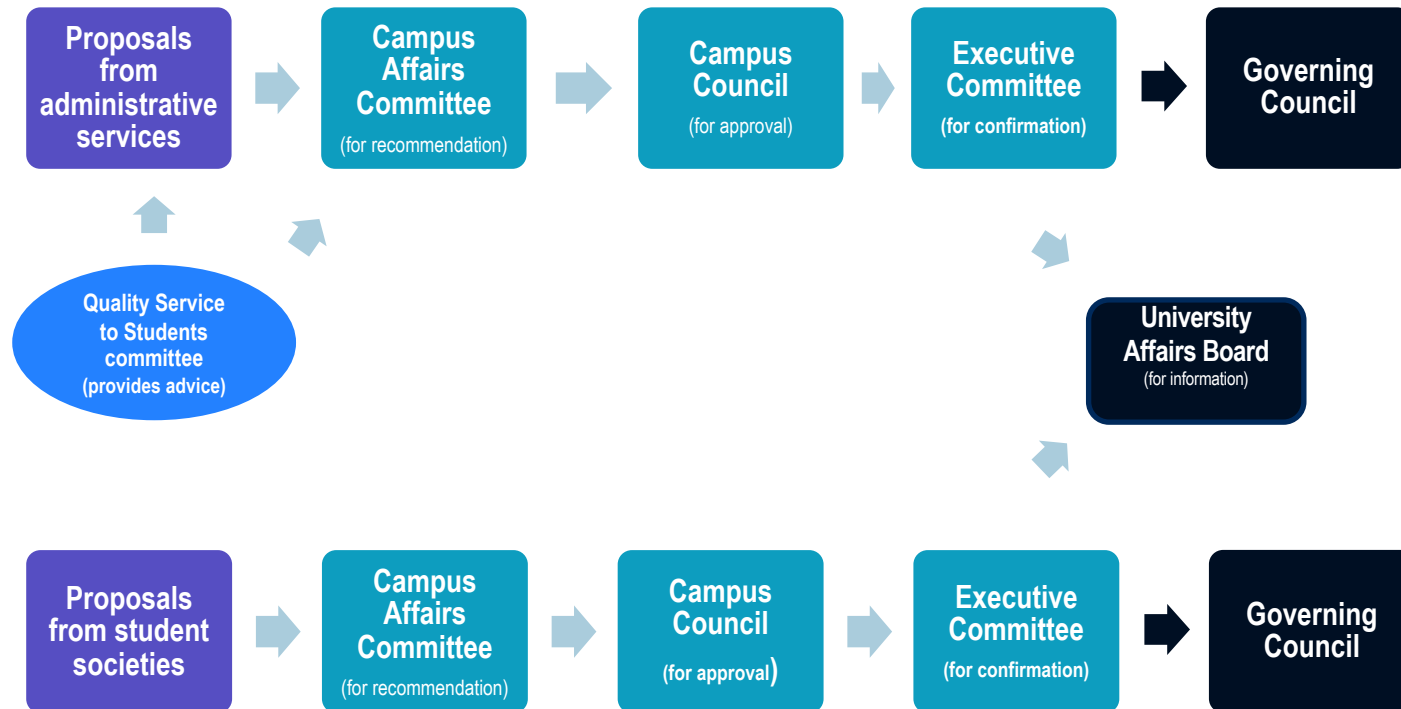
UTM Health Services
UTM Recreation & Athletics
UTM Student Services
 Transit (shuttle)
 Career Services
 Academic Support
 Student Buildings
 (student group spaces)
 Child Care Support
 Family Care
 Student Clubs & Funds
 Student Handbook &
 Communications
 Alcohol Ed & Monitoring
 Int'l Student Support
UT-wide sport & physical
activity*
UT-wide Hart House*

UTM Students' Union (UTMSU)
UTM Association of Graduate
Students (UTMAGS)
UTM Athletic Council (UTMAC)
UTM Residence Council
UTM student radio CFRE
UTM student newspaper *The
Medium*
MMPA Student Society

University of Toronto Students
Union (UTSU)
Association of Part-Time
Undergraduate Students (APUS)
University of Toronto Graduate
Students' Union (UTGSU)
CIUT Community Radio
The Varsity
Medical Society



Overview of Protocol Fees Processes



Status

- Campus services completed consultations with users, students at large and QSS advisory groups; directors/managers developed and presented proposals to QSS for consideration of endorsement.
- Voting occurred Jan 25, 2022:
 - the Health Services fee was unanimously endorsed
 - the Recreation & Athletics Fee was not endorsed
 - the Student Services Fee was not endorsed
- The fees sought that were unendorsed are within the amounts allowed by the Protocol as permanent increases (as they are less than the lesser of the Protocol's allowable indexes)

Summary of Campus Fees for Approval

	2021-22 fees	Proposed 2022-23 fees	Max allowed without QSS endorsement*
Health Services	\$60.15 (FT)	\$60.15 (FT)	\$80.34 (FT)
	\$12.03 (PT)	\$12.03 (PT)	\$16.07 (PT)
Athletics	\$205.88 (FT)	\$205.88 (FT)	\$224.11 (FT)
	\$41.18 (PT)	\$41.18 (PT)	\$44.82 (PT)
SSF Bundle	\$210.36 (FT)	\$214.67 (FT)	\$262.97 (FT)
	\$42.07 (PT)	\$42.93 (PT)	\$52.59 (PT)

*Max. calculated using a Protocol-defined worksheet with a specific Consumer Price Index and UT Index calculation