

CAPITAL PROJECTS CONSTRUCTION REPORT

December 2021

UTSC Instructional Centre, Phase 2 (P200-17-164)

Original Approval by Governing Council	Consultant	Delivery	Construction Start	Contract Completion Date	Projected Completion Date	Anticipated Contract Duration	Current Elapsed Duration	Current Approved TPC	Amount Committed Construction	Actual Construction
February 2021	ZAS Architects with CEBRA	CM with Ellis Don	June 2021	February 2024	March 2024	32 Months	7 Months	\$151.8M	\$51.5M	\$5.0M
GSM		18,495		Construction Completion Percent						4%



Project Status

- Foundations and below grade structure ongoing;
- Second tower crane installed.

CAPITAL PROJECTS CONSTRUCTION REPORT

December 2021

Spadina Sussex Student Residence (P116-14-094)

Original Approval by Governing Council	Consultant	Delivery	Construction Start	Contract Completion Date	Projected Completion Date	Anticipated Contract Duration	Current Elapsed Duration	Current Approved TPC	Amount Committed Construction	Actual Construction
October 2019	Diamond Schmitt (hired by JV Development Partners – Daniels Corp)	CM via JV Partner (Daniels)	Dec 1, 2021	Property Closing Date (TBD)	November 2024	Property Closing Date (TBD)	Effective 8 April 2019 32 Months	\$113.9M	\$30.1M	\$0
Construction Percent Completion										6%



Project Status

- Heritage Retention work for 698 Spadina is complete, piling for shoring and caisson work is underway.

CAPITAL PROJECTS CONSTRUCTION REPORT

December 2021

Landscape of Landmark Quality (P888-15-065)

Original Approval by Governing Council	Consultant	Delivery	Construction Start	Contract Completion Date	Projected Completion Date	Anticipated Contract Duration	Current Elapsed Duration	Current Approved TPC	Amount Committed Construction	Actual Construction
October 2019	KPMG with MVVA	CM with Ellis Don	Nov 2020	June 2023	September 2023	32 Months	13 Months	CM award	\$63M	\$18M
GSM		90,840						Construction Completion Percent	29%	



Project Status

Geothermal vertical boreholes completed in May 2021. Landscape work at Sir Dan, MSB upper terrace and Whitney walk at Back Campus completed. Hart House, Tower Road at Back Campus and MSB east to be completed continue and anticipated to be completed in Spring 2022. Excavation at parking garage completed. On going – Site servicing rerouting, shoring, dewatering, concrete form work and waterproofing. MSB north plaza and Alumni plaza anticipating to commence in Spring 2022.

CAPITAL PROJECTS CONSTRUCTION REPORT

December 2021

Schwartz Reisman Innovation Centre (P162-17-016)

Original Approval by Governing Council	Consultant	Delivery	Construction Start	Contract Completion Date	Projected Completion Date	Anticipated Contract Duration	Current Elapsed Duration	Current Approved TPC	Amount Committed Construction	Actual Construction
March 2019	Teeple with Weiss/Manfredi	CM with Ellis Don	30 July 2019	February 2023	January 2023	43 Months	29 Months	\$199M	\$158.1M	\$78.2M
GSM		20,229 above grade						Construction Completion Percent		35%

Project Status

- Level 13 structural slab is ongoing; roof structure scheduled to be completed February 2022.
- Mechanical and electrical rough-ins and equipment installation is ongoing at Level P1 to 05.
- Masonry work is complete at Levels P1 to 01.
- Precast panel installation is ongoing on Levels 01 to 05.
- Curtain wall and punched windows installation started on Levels 01 and 02.



CAPITAL PROJECTS CONSTRUCTION REPORT

December 2021

UTSC Residence (P200-18-159)

Original Approval by Governing Council	Consultant	Delivery	Construction Start	Contract Completion Date	Projected Completion Date	Anticipated Contract Duration	Current Elapsed Duration	Current Approved TPC	Amount Committed Construction	Actual Construction
October 2019	IBI Group	Design-Build Bridge with Pomerleau	June 2020	March 2023	May 2023	36 Months	18 Months	\$133.2M	\$116.6M	\$36.7M
GSM				26,265				Construction Completion Percent		41%



Project Status

- Formwork complete;
- Crane demobilized;
- Window installation on levels 6 and 7 ongoing;
- Building sheathing and air barrier installation ongoing;
- Interior Stud installation commenced;
- Building Envelope air infiltration testing for Passive House compliance underway.

CAPITAL PROJECTS CONSTRUCTION REPORT

December 2021

Fitzgerald Revitalization (P025-18-008)

Original Approval by Governing Council	Consultant	Delivery	Construction Start	Contract Completion Date	Projected Completion Date	Anticipated Contract Duration	Current Elapsed Duration	Current Approved TPC	Amount Committed Construction	Actual Construction	
March 2019	RDHA with OMA	Stipulated Sum with Buttcon	22 Sept 2020	August 2022	September 2022	23 Months	13 Months	\$62.8M	\$53.1M	\$22.3M	
GSM		8,000								Construction Completion Percent	55%



Project Status

Heritage restoration work complete on all facades.
 M&E rough-in's are in progress on all floors.
 Concrete floors installed on Floors 5,4,3 &2. Atrium footings and grade beams have been installed.
 Interior partitions are installed on all floors.

CAPITAL PROJECTS CONSTRUCTION REPORT

December 2021

UTM Science Building (P300-17-024)

Original Approval by Governing Council	Consultant	Delivery	Construction Start	Contract Completion Date	Projected Completion Date	Anticipated Contract Duration	Current Elapsed Duration	Current Approved TPC	Amount Committed Construction	Actual Construction
December 2017	Kieran Timberlake	Stip Sum with Walsh	March 2020	May 2023	June 2023	37 Months	21 Months	\$164.6M	\$128.9M	\$75.5M
GSM	15,552								Construction Percent Completion	58%

Building structure is nearly complete. Concrete and steel penthouse complete, Building envelope is well underway, Interiors works are progressing from level 1 upwards.

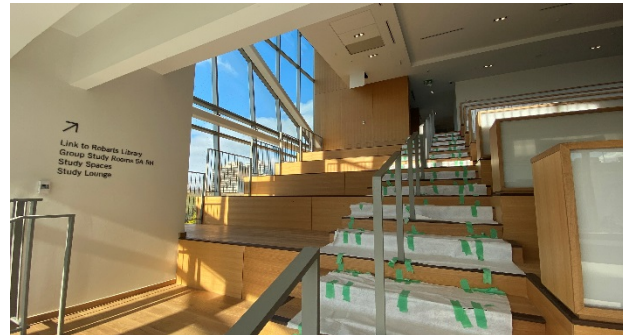


CAPITAL PROJECTS CONSTRUCTION REPORT

December 2021

Robarts Commons (P006-10-113)

Original Approval by Governing Council	Consultant	Delivery	Construction Start	Contract Completion Date	Projected Completion Date	Anticipated Contract Duration	Current Elapsed Duration	Current Approved TPC	Amount Committed Construction	Actual Construction
February 2015	Diamond Schmitt	Stip Sum with Harbridge + Cross	June 2017	April 2019	December 2020 December 2021	23 Months	55 Months	\$39.8 M	\$28.2M	\$27.3M
GSM								5540		
									Construction Completion Percent	97%



Project Status

Municipal occupancy - 17 Dec 2021

Substantial performance 20 Dec 2021

Landscaping and deficiency address ongoing

Projects in Design

CAPITAL PROJECTS CONSTRUCTION REPORT

Project	Design Award	Consultant	Approximate Construction Start	Approved TPC
UTSC Indigenous House (P200-19-081)	December 2019	Formline Architecture with LGA	February 2022	Full project approved.
UTSC Parking Structure (P200-15-053)	December 2019	Gh3 with Behnisch	Q2 - 2022	\$4.6M Consultant fees
Academic Wood Tower (P108-14-088)	August 2016	MacLennan Juankalns Miller Associates with Patkau Architects	Early 2022	Full project approved.
Harbord Residence (P068-17-093)	December 2018	Maltzan with Architects Alliance	TBD	\$3.7M Consultant fees
Centre for Civilizations, Cultures & Cities (P017-14-126)	August 2016	Diller Scofidio Renfro with Architects Alliance	April 2023	Full project approved.
Woodsworth College – New Academic Building (P038-18-052)	January 2019	Kongats	TBD	Full project approved.
UTM Arts Culture Technology (ACT) Building (P300-19-122)	April 2020	KPMB/Henning Larsen	Q2 - 2023	\$9.4M Consultant fees
Koffler Scientific Reserve Facilities Master Plan (P905-16-028)	July 2017	Montgomery Sisam	March 2022	Full project approved.
New Astronomy Building (P036-17-111)	January 2020	Morphosis/Teeple	TBD	\$3M Consultant fees
UTM New Residence (P300-20-009)	December 2020	Christensen & Co. with Montgomery Sisam	June 2022	\$4.8M Consultant fees
Dentistry Clinic 2 Renewal (P065-21-050)	August 2021	Montgomery Sisam	Sept 2023	\$1.2M Consultant fees to end of Design Development Phase
Innis College Renovation and Addition (P132-18-156)	March 2019	Montgomery Sisam with Kahler Slater	TBD	\$1.2M Consultant fees
Temetry Faculty of Medicine Emerging & Pandemic Infections Centre (EPIC) Facility (P005-20-092)	March 2021	Dialog- Merrick	TBD	\$9.9M Consultant fees + Demolition & Abatement
Dentistry Simulation Lab 4 (P065-20-110)	Sept 2021	Montgomery Sisam with Kahler Slater	Dec 2022	\$770K Consultants fees to the end of Construction Documents Phase
Hart House Renewal (P002-17-145)	December 2019	EVOQ	TBD	\$2.9M