



University of Toronto

***Compulsory  
Non-Academic  
Incidental Fees  
2005-06***

January 9, 2006



© Copyright 2006, University of Toronto

Office of Student Affairs, University of Toronto  
214 College Street, Room 307, Toronto, ON M5T 2Z9

Phone: (416) 978-5536 • Fax: (416) 971-2037

[student.affairs@utoronto.ca](mailto:student.affairs@utoronto.ca) • [www.sa.utoronto.ca](http://www.sa.utoronto.ca)

**Compulsory Non-Academic Incidental Fees**

Fees for divisional student societies and other divisional fees are listed in a white background.  
 Fees for central and cross-divisional student societies are listed in a light shaded background.  
 Fees for University operated services are listed in a dark shaded background.

**ARTS AND SCIENCE DIVISIONS**

Innis College	Summer 2005		Fall 2005		Winter 2006		Summer 2004		Fall 2004		Winter 2005	
	Full-time	Part-time	Full-time	Part-time	Full-time	Part-time	Full-time	Part-time	Full-time	Part-time	Full-time	Part-time
Innis College Student Society	0.00	0.00	22.21	22.21	22.21	22.21	0.00	0.00	22.21	22.21	22.21	22.21
Innis College Student Services Fee	7.50	2.25	7.50	2.25	7.50	2.25	7.50	2.25	7.50	2.25	7.50	2.25
Students' Administrative Council	25.75	-	105.94	-	105.94	-	16.65	-	99.19	-	99.19	-
Association of Part-time Undergraduate Students	-	14.14	-	67.33	-	67.33	-	11.00	-	37.44	-	37.44
Arts & Science Students' Union	5.50	-	5.50	-	5.50	-	5.50	-	5.50	-	5.50	-
U of T Community Radio	2.50	-	2.50	-	2.50	-	2.50	-	2.50	-	2.50	-
The Varsity	0.63	-	0.63	-	0.63	-	0.63	-	0.63	-	0.63	-
Athletics & Recreation	99.64	19.93	99.64	19.93	99.64	19.93	97.69	19.54	97.69	19.54	97.69	19.54
Hart House	61.52	12.30	61.52	12.30	61.52	12.30	60.31	12.06	60.31	12.06	60.31	12.06
Health Service	17.13	3.43	17.13	3.43	17.13	3.43	17.13	3.43	17.13	3.43	17.13	3.43
Student Services	54.39	10.88	54.39	10.88	54.39	10.88	53.32	10.66	53.32	10.66	53.32	10.66
Student Affairs	22.97	4.59	22.97	4.59	22.97	4.59	22.52	4.50	22.52	4.50	22.52	4.50
<b>Total</b>	<b>297.53</b>	<b>67.52</b>	<b>399.93</b>	<b>142.92</b>	<b>399.93</b>	<b>142.92</b>	<b>283.75</b>	<b>63.44</b>	<b>388.50</b>	<b>112.09</b>	<b>388.50</b>	<b>112.09</b>
Change From Previous Year	+4.9%	+6.4%	+2.9%	+27.5%	+2.9%	+27.5%	+11.3%	+3.1%	-2.2%	+6.9%	-2.2%	+6.9%
			<b>Fall + Winter:</b>		Full-time	<b>799.86</b>			<b>Fall + Winter:</b>		Full-time	<b>777.00</b>
					Part-time	<b>285.84</b>					Part-time	<b>224.18</b>

New College	Summer 2005		Fall 2005		Winter 2006		Summer 2004		Fall 2004		Winter 2005	
	Full-time	Part-time	Full-time	Part-time	Full-time	Part-time	Full-time	Part-time	Full-time	Part-time	Full-time	Part-time
New College Student Council	0.00	0.00	27.00	12.00	27.00	12.00	0.00	0.00	27.00	12.00	27.00	12.00
Students' Administrative Council	25.75	-	105.94	-	105.94	-	16.65	-	99.19	-	99.19	-
Association of Part-time Undergraduate Students	-	14.14	-	67.33	-	67.33	-	11.00	-	37.44	-	37.44
Arts & Science Students' Union	5.50	-	5.50	-	5.50	-	5.50	-	5.50	-	5.50	-
U of T Community Radio	2.50	-	2.50	-	2.50	-	2.50	-	2.50	-	2.50	-
The Varsity	0.63	-	0.63	-	0.63	-	0.63	-	0.63	-	0.63	-
Athletics & Recreation	99.64	19.93	99.64	19.93	99.64	19.93	97.69	19.54	97.69	19.54	97.69	19.54
Hart House	61.52	12.30	61.52	12.30	61.52	12.30	60.31	12.06	60.31	12.06	60.31	12.06
Health Service	17.13	3.43	17.13	3.43	17.13	3.43	17.13	3.43	17.13	3.43	17.13	3.43
Student Services	54.39	10.88	54.39	10.88	54.39	10.88	53.32	10.66	53.32	10.66	53.32	10.66
Student Affairs	22.97	4.59	22.97	4.59	22.97	4.59	22.52	4.50	22.52	4.50	22.52	4.50
<b>Total</b>	<b>290.03</b>	<b>65.27</b>	<b>397.22</b>	<b>130.46</b>	<b>397.22</b>	<b>130.46</b>	<b>276.25</b>	<b>61.19</b>	<b>385.79</b>	<b>99.63</b>	<b>385.79</b>	<b>99.63</b>
Change From Previous Year	+5.0%	+6.7%	+3.0%	+30.9%	+3.0%	+30.9%	+11.6%	+3.2%	-2.2%	+7.8%	-2.2%	+7.8%
			<b>Fall + Winter:</b>		Full-time	<b>794.44</b>			<b>Fall + Winter:</b>		Full-time	<b>771.58</b>
					Part-time	<b>260.92</b>					Part-time	<b>199.26</b>

University College	Summer 2005		Fall 2005		Winter 2006		Summer 2004		Fall 2004		Winter 2005	
	Full-time	Part-time	Full-time	Part-time	Full-time	Part-time	Full-time	Part-time	Full-time	Part-time	Full-time	Part-time
University College Literary & Athletic Society	0.00	0.00	16.52	7.34	16.52	7.34	0.00	0.00	16.52	7.34	16.52	7.34
Students' Administrative Council	25.75	-	105.94	-	105.94	-	16.65	-	99.19	-	99.19	-
Association of Part-time Undergraduate Students	-	14.14	-	67.33	-	67.33	-	11.00	-	37.44	-	37.44
Arts & Science Students' Union	5.50	-	5.50	-	5.50	-	5.50	-	5.50	-	5.50	-
U of T Community Radio	2.50	-	2.50	-	2.50	-	2.50	-	2.50	-	2.50	-
The Varsity	0.63	-	0.63	-	0.63	-	0.63	-	0.63	-	0.63	-
Athletics & Recreation	99.64	19.93	99.64	19.93	99.64	19.93	97.69	19.54	97.69	19.54	97.69	19.54
Hart House	61.52	12.30	61.52	12.30	61.52	12.30	60.31	12.06	60.31	12.06	60.31	12.06
Health Service	17.13	3.43	17.13	3.43	17.13	3.43	17.13	3.43	17.13	3.43	17.13	3.43
Student Services	54.39	10.88	54.39	10.88	54.39	10.88	53.32	10.66	53.32	10.66	53.32	10.66
Student Affairs	22.97	4.59	22.97	4.59	22.97	4.59	22.52	4.50	22.52	4.50	22.52	4.50
<b>Total</b>	<b>290.03</b>	<b>65.27</b>	<b>386.74</b>	<b>125.80</b>	<b>386.74</b>	<b>125.80</b>	<b>276.25</b>	<b>61.19</b>	<b>375.31</b>	<b>94.97</b>	<b>375.31</b>	<b>94.97</b>
Change From Previous Year	+5.0%	+6.7%	+3.0%	+32.5%	+3.0%	+32.5%	+11.6%	+3.2%	-2.3%	+8.2%	-2.3%	+8.2%
			<b>Fall + Winter:</b>		Full-time	<b>773.48</b>			<b>Fall + Winter:</b>		Full-time	<b>750.62</b>
					Part-time	<b>251.60</b>					Part-time	<b>189.94</b>

Woodsworth College	Summer 2005		Fall 2005		Winter 2006		Summer 2004		Fall 2004		Winter 2005	
	Full-time	Part-time	Full-time	Part-time	Full-time	Part-time	Full-time	Part-time	Full-time	Part-time	Full-time	Part-time
Woodsworth College Students' Association	15.00	15.00	7.50	7.50	7.50	7.50	50.00	50.00	25.00	25.00	25.00	25.00
Students' Administrative Council	25.75	-	105.94	-	105.94	-	16.65	-	99.19	-	99.19	-
Association of Part-time Undergraduate Students	-	14.14	-	67.33	-	67.33	-	11.00	-	37.44	-	37.44
Arts & Science Students' Union	5.50	-	5.50	-	5.50	-	5.50	-	5.50	-	5.50	-
U of T Community Radio	2.50	-	2.50	-	2.50	-	2.50	-	2.50	-	2.50	-
The Varsity	0.63	-	0.63	-	0.63	-	0.63	-	0.63	-	0.63	-
Athletics & Recreation	99.64	19.93	99.64	19.93	99.64	19.93	97.69	19.54	97.69	19.54	97.69	19.54
Hart House	61.52	12.30	61.52	12.30	61.52	12.30	60.31	12.06	60.31	12.06	60.31	12.06
Health Service	17.13	3.43	17.13	3.43	17.13	3.43	17.13	3.43	17.13	3.43	17.13	3.43
Student Services	54.39	10.88	54.39	10.88	54.39	10.88	53.32	10.66	53.32	10.66	53.32	10.66
Student Affairs	22.97	4.59	22.97	4.59	22.97	4.59	22.52	4.50	22.52	4.50	22.52	4.50
<b>Total</b>	<b>305.03</b>	<b>80.27</b>	<b>377.72</b>	<b>125.96</b>	<b>377.72</b>	<b>125.96</b>	<b>326.25</b>	<b>111.19</b>	<b>383.79</b>	<b>112.63</b>	<b>383.79</b>	<b>112.63</b>
Change From Previous Year	-6.5%	-27.8%	-1.6%	+11.8%	-1.6%	+11.8%	+9.7%	+1.7%	-2.2%	+6.8%	-2.2%	+6.8%
			<b>Fall + Winter:</b>		Full-time	<b>755.44</b>			<b>Fall + Winter:</b>		Full-time	<b>767.58</b>
					Part-time	<b>251.92</b>					Part-time	<b>225.26</b>

**Compulsory Non-Academic Incidental Fees**

**ARTS AND SCIENCE DIVISIONS (continued)**

University of Toronto at Mississauga	Summer 2005		Fall 2005		Winter 2006		Summer 2004		Fall 2004		Winter 2005			
	Full-time	Part-time	Full-time	Part-time	Full-time	Part-time	Full-time	Part-time	Full-time	Part-time	Full-time	Part-time		
Erindale College Student Union	43.13	0.00	43.33	0.00	43.33	0.00	43.13	0.00	43.13	0.00	43.13	0.00		
The Medium	0.00	0.00	3.63	1.21	3.63	1.21	0.00	0.00	3.63	1.21	3.63	1.21		
U of T at Mississauga Athletics Council	2.77	2.77	4.30	1.39	4.30	1.39	2.77	2.77	4.30	1.39	4.30	1.39		
Erindale Part-time Undergraduate Students	0.00	17.60	0.00	8.80	0.00	8.80	0.00	17.60	0.00	8.80	0.00	8.80		
VIBE - Radio Erindale	2.00	0.00	2.00	0.00	2.00	0.00	2.00	0.00	2.00	0.00	2.00	0.00		
Students' Administrative Council	23.50	-	103.69	-	103.69	-	16.90	-	96.94	-	96.94	-		
Association of Part-time Undergraduate Students	-	14.14	-	67.33	-	67.33	-	11.00	-	37.44	-	37.44		
U of T Community Radio	0.50	-	0.50	-	0.50	-	0.50	-	0.50	-	0.50	-		
The Varsity	0.63	-	0.63	-	0.63	-	0.63	-	0.63	-	0.63	-		
Centre for Physical Education	68.04	13.61	68.04	13.61	68.04	13.61	51.00	10.20	51.00	10.20	51.00	10.20		
Athletics Building Levy	13.66	2.73	13.66	2.73	13.66	2.73	13.26	2.65	13.26	2.65	13.26	2.65		
Athletics & Recreation	12.48	2.50	12.48	2.50	12.48	2.50	12.24	2.45	12.24	2.45	12.24	2.45		
Hart House	1.88	0.38	1.88	0.38	1.88	0.38	1.84	0.37	1.84	0.37	1.84	0.37		
Health Service	18.15	3.63	18.15	3.63	18.15	3.63	17.50	3.50	17.50	3.50	17.50	3.50		
Student Services	99.20	19.84	99.20	19.84	99.20	19.84	111.78	22.36	111.78	22.36	111.78	22.36		
<b>Total</b>	<b>285.94</b>	<b>77.20</b>	<b>371.49</b>	<b>121.42</b>	<b>371.49</b>	<b>121.42</b>	<b>273.55</b>	<b>72.90</b>	<b>358.75</b>	<b>90.37</b>	<b>358.75</b>	<b>90.37</b>		
Change From Previous Year	+4.5%	+5.9%	+3.6%	+34.4%	+3.6%	+34.4%	+8.9%	+0.8%	-4.7%	+7.0%	-4.7%	+7.0%		
<b>Fall + Winter:</b>							Full-time	<b>742.98</b>	<b>Fall + Winter:</b>				Full-time	<b>717.50</b>
							Part-time	<b>242.84</b>					Part-time	<b>180.74</b>

University of Toronto at Scarborough	Summer 2005		Fall 2005		Winter 2006		Summer 2004		Fall 2004		Winter 2005			
	Full-time	Part-time	Full-time	Part-time	Full-time	Part-time	Full-time	Part-time	Full-time	Part-time	Full-time	Part-time		
Scarborough Campus Students' Council	65.33	10.92	146.49	11.22	146.49	11.22	42.21	10.76	138.77	10.92	138.77	10.92		
Scarborough Campus Students' Press (The Underground)	0.00	0.00	3.50	0.00	3.50	0.00	0.00	0.00	2.50	0.00	2.50	0.00		
Scarborough College Athletic Association	0.00	0.00	3.50	0.00	3.50	0.00	0.00	0.00	3.50	0.00	3.50	0.00		
Scarborough Campus Community Radio (CSCR)	0.00	0.00	2.00	0.00	2.00	0.00	0.00	0.00	2.00	0.00	2.00	0.00		
Students' Administrative Council	0.00	-	-	-	-	-	14.90	-	-	-	-	-		
Association of Part-time Undergraduate Students	-	14.14	-	67.33	-	67.33	-	11.00	-	37.44	-	37.44		
U of T Community Radio	0.50	-	0.50	-	0.50	-	0.50	-	0.50	-	0.50	-		
The Varsity	0.63	-	0.63	-	0.63	-	0.63	-	0.63	-	0.63	-		
Scarborough College Athletic Fee	83.90	16.78	83.90	16.78	83.90	16.78	81.46	16.29	81.46	16.29	81.46	16.29		
Athletics & Recreation	12.48	2.50	12.48	2.50	12.48	2.50	12.24	2.45	12.24	2.45	12.24	2.45		
Hart House	1.88	0.38	1.88	0.38	1.88	0.38	1.84	0.37	1.84	0.37	1.84	0.37		
Health Service	39.14	7.83	39.14	7.83	39.14	7.83	38.00	7.60	38.00	7.60	38.00	7.60		
Student Services	105.61	21.12	105.61	21.12	105.61	21.12	86.59	17.32	86.59	17.32	86.59	17.32		
<b>Total</b>	<b>309.47</b>	<b>73.67</b>	<b>399.63</b>	<b>127.16</b>	<b>399.63</b>	<b>127.16</b>	<b>278.37</b>	<b>65.79</b>	<b>368.03</b>	<b>92.39</b>	<b>368.03</b>	<b>92.39</b>		
Change From Previous Year	+11.2%	+12.0%	+8.6%	+37.6%	+8.6%	+37.6%	+8.3%	+1.9%	-3.8%	+7.4%	-3.8%	+7.4%		
<b>Fall + Winter:</b>							Full-time	<b>799.26</b>	<b>Fall + Winter:</b>				Full-time	<b>736.06</b>
							Part-time	<b>254.32</b>					Part-time	<b>184.78</b>

**ARTS AND SCIENCE DIVISIONS - Federated Colleges**

St. Michael's College	Summer 2005		Fall 2005		Winter 2006		Summer 2004		Fall 2004		Winter 2005			
	Full-time	Part-time	Full-time	Part-time	Full-time	Part-time	Full-time	Part-time	Full-time	Part-time	Full-time	Part-time		
St. Michael's College Student Union	0.00	0.00	14.00	10.50	14.00	10.50	0.00	0.00	14.00	10.50	14.00	10.50		
The Mike	0.00	0.00	2.60	1.50	2.60	1.50	0.00	0.00	2.60	1.50	2.60	1.50		
College Fee	-	-	97.50	48.75	97.50	48.75	-	-	97.50	48.75	97.50	48.75		
Campaign Fee	-	-	15.00	15.00	15.00	15.00	-	-	15.00	15.00	15.00	15.00		
Students' Administrative Council	25.75	-	105.94	-	105.94	-	16.65	-	99.19	-	99.19	-		
Association of Part-time Undergraduate Students	-	14.14	-	67.33	-	67.33	-	11.00	-	37.44	-	37.44		
Arts & Science Students' Union	5.50	-	5.50	-	5.50	-	5.50	-	5.50	-	5.50	-		
U of T Community Radio	2.50	-	2.50	-	2.50	-	2.50	-	2.50	-	2.50	-		
The Varsity	0.63	-	0.63	-	0.63	-	0.63	-	0.63	-	0.63	-		
Athletics & Recreation	99.64	19.93	99.64	19.93	99.64	19.93	97.69	19.54	97.69	19.54	97.69	19.54		
Hart House	61.52	12.30	61.52	12.30	61.52	12.30	60.31	12.06	60.31	12.06	60.31	12.06		
Health Service	17.13	3.43	17.13	3.43	17.13	3.43	17.13	3.43	17.13	3.43	17.13	3.43		
Student Services	54.39	10.88	54.39	10.88	54.39	10.88	53.32	10.66	53.32	10.66	53.32	10.66		
Student Affairs	22.97	4.59	22.97	4.59	22.97	4.59	22.52	4.50	22.52	4.50	22.52	4.50		
<b>Total</b>	<b>290.03</b>	<b>65.27</b>	<b>499.32</b>	<b>194.21</b>	<b>499.32</b>	<b>194.21</b>	<b>276.25</b>	<b>61.19</b>	<b>487.89</b>	<b>163.38</b>	<b>487.89</b>	<b>163.38</b>		
Change From Previous Year	+5.0%	+6.7%	+2.3%	+18.9%	+2.3%	+18.9%	+11.6%	+3.2%	-1.7%	+4.6%	-1.7%	+4.6%		
<b>Fall + Winter:</b>							Full-time	<b>998.64</b>	<b>Fall + Winter:</b>				Full-time	<b>975.78</b>
							Part-time	<b>388.42</b>					Part-time	<b>326.76</b>

Compulsory Non-Academic Incidental Fees

ARTS AND SCIENCE DIVISIONS - Federated Colleges (Continued)

Trinity College	Summer 2005		Fall 2005		Winter 2006		Summer 2004		Fall 2004		Winter 2005			
	Full-time	Part-time	Full-time	Part-time	Full-time	Part-time	Full-time	Part-time	Full-time	Part-time	Full-time	Part-time		
Trinity College Meetings	0.00	0.00	42.67	42.67	42.68	42.68	0.00	0.00	44.17	44.17	44.18	44.18		
College Fee	-	-	128.00	64.00	128.00	64.00	-	-	125.00	62.50	125.00	62.50		
Students' Administrative Council	25.75	-	105.94	-	105.94	-	16.65	-	99.19	-	99.19	-		
Association of Part-time Undergraduate Students	-	14.14	-	67.33	-	67.33	-	11.00	-	37.44	-	37.44		
Arts & Science Students' Union	5.50	-	5.50	-	5.50	-	5.50	-	5.50	-	5.50	-		
U of T Community Radio	2.50	-	2.50	-	2.50	-	2.50	-	2.50	-	2.50	-		
The Varsity	0.63	-	0.63	-	0.63	-	0.63	-	0.63	-	0.63	-		
Athletics & Recreation	99.64	19.93	99.64	19.93	99.64	19.93	97.69	19.54	97.69	19.54	97.69	19.54		
Hart House	61.52	12.30	61.52	12.30	61.52	12.30	60.31	12.06	60.31	12.06	60.31	12.06		
Health Service	17.13	3.43	17.13	3.43	17.13	3.43	17.13	3.43	17.13	3.43	17.13	3.43		
Student Services	54.39	10.88	54.39	10.88	54.39	10.88	53.32	10.66	53.32	10.66	53.32	10.66		
Student Affairs	22.97	4.59	22.97	4.59	22.97	4.59	22.52	4.50	22.52	4.50	22.52	4.50		
<b>Total</b>	<b>290.03</b>	<b>65.27</b>	<b>540.89</b>	<b>225.13</b>	<b>540.90</b>	<b>225.14</b>	<b>276.25</b>	<b>61.19</b>	<b>527.96</b>	<b>194.30</b>	<b>527.97</b>	<b>194.31</b>		
Change From Previous Year	+5.0%	+6.7%	+2.4%	+15.9%	+2.4%	+15.9%	+11.6%	+3.2%	-1.1%	+4.8%	-1.1%	+4.8%		
<b>Fall + Winter:</b>							Full-time	<b>1,081.79</b>	<b>Fall + Winter:</b>				Full-time	<b>1,055.93</b>
							Part-time	<b>450.27</b>					Part-time	<b>388.61</b>

Victoria College	Summer 2005		Fall 2005		Winter 2006		Summer 2004		Fall 2004		Winter 2005			
	Full-time	Part-time	Full-time	Part-time	Full-time	Part-time	Full-time	Part-time	Full-time	Part-time	Full-time	Part-time		
Victoria University Students' Administrative Council	0.00	0.00	28.37	17.67	28.38	17.68	0.00	0.00	27.63	16.93	27.63	16.93		
Victoria University Student Services Fee	-	-	45.00	15.00	45.00	15.00	-	-	45.00	15.00	45.00	15.00		
Students' Administrative Council	25.75	-	105.94	-	105.94	-	16.65	-	99.19	-	99.19	-		
Association of Part-time Undergraduate Students	-	14.14	-	67.33	-	67.33	-	11.00	-	37.44	-	37.44		
Arts & Science Students' Union	5.50	-	5.50	-	5.50	-	5.50	-	5.50	-	5.50	-		
U of T Community Radio	2.50	-	2.50	-	2.50	-	2.50	-	2.50	-	2.50	-		
The Varsity	0.63	-	0.63	-	0.63	-	0.63	-	0.63	-	0.63	-		
Athletics & Recreation	99.64	19.93	99.64	19.93	99.64	19.93	97.69	19.54	97.69	19.54	97.69	19.54		
Hart House	61.52	12.30	61.52	12.30	61.52	12.30	60.31	12.06	60.31	12.06	60.31	12.06		
Health Service	17.13	3.43	17.13	3.43	17.13	3.43	17.13	3.43	17.13	3.43	17.13	3.43		
Student Services	54.39	10.88	54.39	10.88	54.39	10.88	53.32	10.66	53.32	10.66	53.32	10.66		
Student Affairs	22.97	4.59	22.97	4.59	22.97	4.59	22.52	4.50	22.52	4.50	22.52	4.50		
<b>Total</b>	<b>290.03</b>	<b>65.27</b>	<b>443.59</b>	<b>151.13</b>	<b>443.60</b>	<b>151.14</b>	<b>276.25</b>	<b>61.19</b>	<b>431.42</b>	<b>119.56</b>	<b>431.42</b>	<b>119.56</b>		
Change From Previous Year	+5.0%	+6.7%	+2.8%	+26.4%	+2.8%	+26.4%	+11.6%	+3.2%	+0.1%	+9.6%	+0.1%	+9.6%		
<b>Fall + Winter:</b>							Full-time	<b>887.19</b>	<b>Fall + Winter:</b>				Full-time	<b>862.84</b>
							Part-time	<b>302.27</b>					Part-time	<b>239.12</b>

Note: First year full-time students are charged an orientation fee (\$50.00 per session)

UNDERGRADUATE PROFESSIONAL DIVISIONS

Applied Science & Engineering	Summer 2005		Fall 2005		Winter 2006		Summer 2004		Fall 2004		Winter 2005			
	Full-time	Part-time	Full-time	Part-time	Full-time	Part-time	Full-time	Part-time	Full-time	Part-time	Full-time	Part-time		
Engineering Society	-	-	104.22	0.00	104.22	0.00	-	-	88.34	0.00	88.34	0.00		
Students' Administrative Council	-	-	105.94	-	105.94	-	-	-	99.19	-	99.19	-		
Association of Part-time Undergraduate Students	-	-	-	67.33	-	67.33	-	-	-	37.44	-	37.44		
U of T Community Radio	-	-	-	2.50	-	2.50	-	-	-	2.50	-	2.50		
The Varsity	-	-	-	0.63	-	0.63	-	-	-	0.63	-	0.63		
Athletics & Recreation	-	-	99.64	19.93	99.64	19.93	-	-	97.69	19.54	97.69	19.54		
Hart House	-	-	61.52	12.30	61.52	12.30	-	-	60.31	12.06	60.31	12.06		
Health Service	-	-	17.13	3.43	17.13	3.43	-	-	17.13	3.43	17.13	3.43		
Student Services	-	-	54.39	10.88	54.39	10.88	-	-	53.32	10.66	53.32	10.66		
Student Affairs	-	-	22.97	4.59	22.97	4.59	-	-	22.52	4.50	22.52	4.50		
<b>Total</b>	<b>0.00</b>	<b>0.00</b>	<b>468.94</b>	<b>118.46</b>	<b>468.94</b>	<b>118.46</b>	<b>0.00</b>	<b>0.00</b>	<b>441.63</b>	<b>87.63</b>	<b>441.63</b>	<b>87.63</b>		
Change From Previous Year			+6.2%	+35.2%	+6.2%	+35.2%			-1.8%	+9.0%	-1.8%	+9.0%		
<b>Fall + Winter:</b>							Full-time	<b>937.88</b>	<b>Fall + Winter:</b>				Full-time	<b>883.26</b>
							Part-time	<b>236.92</b>					Part-time	<b>175.26</b>

Dentistry	Summer 2005		Fall 2005		Winter 2006		Summer 2004		Fall 2004		Winter 2005			
	Full-time	Part-time	Full-time	Part-time	Full-time	Part-time	Full-time	Part-time	Full-time	Part-time	Full-time	Part-time		
D.D.S.	-	-	-	-	-	-	-	-	-	-	-	-		
Dental Students' Society	-	-	15.00	-	15.00	-	-	-	15.00	-	15.00	-		
Students' Administrative Council	-	-	105.94	-	105.94	-	-	-	99.19	-	99.19	-		
U of T Community Radio	-	-	-	2.50	-	2.50	-	-	-	2.50	-	2.50		
The Varsity	-	-	-	0.63	-	0.63	-	-	-	0.63	-	0.63		
Athletics & Recreation	-	-	99.64	-	99.64	-	-	-	97.69	-	97.69	-		
Hart House	-	-	61.52	-	61.52	-	-	-	60.31	-	60.31	-		
Health Service	-	-	17.13	-	17.13	-	-	-	17.13	-	17.13	-		
Student Services	-	-	54.39	-	54.39	-	-	-	53.32	-	53.32	-		
Student Affairs	-	-	22.97	-	22.97	-	-	-	22.52	-	22.52	-		
<b>Total</b>	<b>0.00</b>	<b>0.00</b>	<b>379.72</b>	<b>0.00</b>	<b>379.72</b>	<b>0.00</b>	<b>0.00</b>	<b>0.00</b>	<b>368.29</b>	<b>0.00</b>	<b>368.29</b>	<b>0.00</b>		
Change From Previous Year			+3.1%		+3.1%				-2.3%		-2.3%			
<b>Fall + Winter:</b>							Full-time	<b>759.44</b>	<b>Fall + Winter:</b>				Full-time	<b>736.58</b>
							Part-time	<b>0.00</b>					Part-time	<b>0.00</b>

Compulsory Non-Academic Incidental Fees

UNDERGRADUATE PROFESSIONAL DIVISIONS (continued)

Health Administration & Public Health Sciences Degree and Diploma Programs	Summer 2005		Fall 2005		Winter 2006		Summer 2004		Fall 2004		Winter 2005		
	Full-time	Part-time	Full-time	Part-time	Full-time	Part-time	Full-time	Part-time	Full-time	Part-time	Full-time	Part-time	
Students' Administrative Council	-	-	105.94	-	105.94	-	-	-	99.19	-	99.19	-	
Association of Part-time Undergraduate Students	-	-	-	67.33	-	67.33	-	-	-	37.44	-	37.44	
U of T Community Radio	-	-	2.50	-	2.50	-	-	-	2.50	-	2.50	-	
The Varsity	-	-	0.63	-	0.63	-	-	-	0.63	-	0.63	-	
Athletics & Recreation	-	-	99.64	19.93	99.64	19.93	-	-	97.69	19.54	97.69	19.54	
Hart House	-	-	61.52	12.30	61.52	12.30	-	-	60.31	12.06	60.31	12.06	
Health Service	-	-	17.13	3.43	17.13	3.43	-	-	17.13	3.43	17.13	3.43	
Student Services	-	-	54.39	10.88	54.39	10.88	-	-	53.32	10.66	53.32	10.66	
Student Affairs	-	-	22.97	4.59	22.97	4.59	-	-	22.52	4.50	22.52	4.50	
<b>Total</b>	<b>0.00</b>	<b>0.00</b>	<b>364.72</b>	<b>118.46</b>	<b>364.72</b>	<b>118.46</b>	<b>0.00</b>	<b>0.00</b>	<b>353.29</b>	<b>87.63</b>	<b>353.29</b>	<b>87.63</b>	
Change From Previous Year			+3.2%	+35.2%	+3.2%	+35.2%			-2.4%	+9.0%	-2.4%	+9.0%	
			<b>Fall + Winter:</b>		Full-time <b>729.44</b>					<b>Fall + Winter:</b>		Full-time <b>706.58</b>	
					Part-time <b>236.92</b>							Part-time <b>175.26</b>	

Law Undergraduate Programs	Summer 2005		Fall 2005		Winter 2006		Summer 2004		Fall 2004		Winter 2005		
	Full-time	Part-time	Full-time	Part-time	Full-time	Part-time	Full-time	Part-time	Full-time	Part-time	Full-time	Part-time	
Students' Law Society	-	-	35.00	-	35.00	-	-	-	35.00	-	35.00	-	
Students' Administrative Council	-	-	105.94	-	105.94	-	-	-	99.19	-	99.19	-	
U of T Community Radio	-	-	2.50	-	2.50	-	-	-	2.50	-	2.50	-	
The Varsity	-	-	0.63	-	0.63	-	-	-	0.63	-	0.63	-	
Athletics & Recreation	-	-	99.64	-	99.64	-	-	-	97.69	-	97.69	-	
Hart House	-	-	61.52	-	61.52	-	-	-	60.31	-	60.31	-	
Health Service	-	-	17.13	-	17.13	-	-	-	17.13	-	17.13	-	
Student Services	-	-	54.39	-	54.39	-	-	-	53.32	-	53.32	-	
Student Affairs	-	-	22.97	-	22.97	-	-	-	22.52	-	22.52	-	
<b>Total</b>	<b>0.00</b>	<b>0.00</b>	<b>399.72</b>	<b>0.00</b>	<b>399.72</b>	<b>0.00</b>	<b>0.00</b>	<b>0.00</b>	<b>388.29</b>	<b>0.00</b>	<b>388.29</b>	<b>0.00</b>	
Change From Previous Year			+2.9%		+2.9%				-2.2%		-2.2%		
			<b>Fall + Winter:</b>		Full-time <b>799.44</b>					<b>Fall + Winter:</b>		Full-time <b>776.58</b>	
					Part-time <b>0.00</b>							Part-time <b>0.00</b>	

Half-time program students are charged 50% of full-time fees

Note: First year students are charged an additional SLS Orientation Fee (\$25.00 per session)

Medicine M.D.	Summer 2005		Fall 2005		Winter 2006		Summer 2004		Fall 2004		Winter 2005		
	Full-time	Part-time	Full-time	Part-time	Full-time	Part-time	Full-time	Part-time	Full-time	Part-time	Full-time	Part-time	
Medical Society	-	-	29.27	-	29.27	-	-	-	29.27	-	29.27	-	
Students' Administrative Council	-	-	105.94	-	105.94	-	-	-	99.19	-	99.19	-	
U of T Community Radio	-	-	2.50	-	2.50	-	-	-	2.50	-	2.50	-	
The Varsity	-	-	0.63	-	0.63	-	-	-	0.63	-	0.63	-	
Athletics & Recreation	-	-	99.64	-	99.64	-	-	-	97.69	-	97.69	-	
Hart House	-	-	61.52	-	61.52	-	-	-	60.31	-	60.31	-	
Health Service	-	-	17.13	-	17.13	-	-	-	17.13	-	17.13	-	
Student Services	-	-	54.39	-	54.39	-	-	-	53.32	-	53.32	-	
Student Affairs	-	-	22.97	-	22.97	-	-	-	22.52	-	22.52	-	
<b>Total</b>	<b>0.00</b>	<b>0.00</b>	<b>393.99</b>	<b>0.00</b>	<b>393.99</b>	<b>0.00</b>	<b>0.00</b>	<b>0.00</b>	<b>382.56</b>	<b>0.00</b>	<b>382.56</b>	<b>0.00</b>	
Change From Previous Year			+3.0%		+3.0%				-2.2%		-2.2%		
			<b>Fall + Winter:</b>		Full-time <b>787.98</b>					<b>Fall + Winter:</b>		Full-time <b>765.12</b>	
					Part-time <b>0.00</b>							Part-time <b>0.00</b>	

Medicine Radiation Sciences	Summer 2005		Fall 2005		Winter 2006		Summer 2004		Fall 2004		Winter 2005		
	Full-time	Part-time	Full-time	Part-time	Full-time	Part-time	Full-time	Part-time	Full-time	Part-time	Full-time	Part-time	
Students' Administrative Council	-	-	105.94	-	105.94	-	-	-	99.19	-	99.19	-	
U of T Community Radio	-	-	2.50	-	2.50	-	-	-	2.50	-	2.50	-	
The Varsity	-	-	0.63	-	0.63	-	-	-	0.63	-	0.63	-	
Athletics & Recreation	-	-	99.64	-	99.64	-	-	-	97.69	-	97.69	-	
Hart House	-	-	61.52	-	61.52	-	-	-	60.31	-	60.31	-	
Health Service	-	-	17.13	-	17.13	-	-	-	17.13	-	17.13	-	
Student Services	-	-	54.39	-	54.39	-	-	-	53.32	-	53.32	-	
Student Affairs	-	-	22.97	-	22.97	-	-	-	22.52	-	22.52	-	
<b>Total</b>	<b>0.00</b>	<b>0.00</b>	<b>364.72</b>	<b>0.00</b>	<b>364.72</b>	<b>0.00</b>	<b>0.00</b>	<b>0.00</b>	<b>353.29</b>	<b>0.00</b>	<b>353.29</b>	<b>0.00</b>	
Change From Previous Year			+3.2%		+3.2%				-2.4%		-2.4%		
			<b>Fall + Winter:</b>		Full-time <b>729.44</b>					<b>Fall + Winter:</b>		Full-time <b>706.58</b>	
					Part-time <b>0.00</b>							Part-time <b>0.00</b>	

Note: Radiation Science students are also charged Michener Institute fees.

UNDERGRADUATE PROFESSIONAL DIVISIONS (continued)

Music	Summer 2005		Fall 2005		Winter 2006		Summer 2004		Fall 2004		Winter 2005			
	Full-time	Part-time	Full-time	Part-time	Full-time	Part-time	Full-time	Part-time	Full-time	Part-time	Full-time	Part-time		
Music Undergraduate Association	-	-	7.50	0.00	7.50	0.00	-	-	7.50	0.00	7.50	0.00		
Students' Administrative Council	-	-	105.94	-	105.94	-	-	-	99.19	-	99.19	-		
Association of Part-time Undergraduate Students	-	-	-	67.33	-	67.33	-	-	-	37.44	-	37.44		
U of T Community Radio	-	-	2.50	-	2.50	-	-	-	2.50	-	2.50	-		
The Varsity	-	-	0.63	-	0.63	-	-	-	0.63	-	0.63	-		
Athletics & Recreation	-	-	99.64	19.93	99.64	19.93	-	-	97.69	19.54	97.69	19.54		
Hart House	-	-	61.52	12.30	61.52	12.30	-	-	60.31	12.06	60.31	12.06		
Health Service	-	-	17.13	3.43	17.13	3.43	-	-	17.13	3.43	17.13	3.43		
Student Services	-	-	54.39	10.88	54.39	10.88	-	-	53.32	10.66	53.32	10.66		
Student Affairs	-	-	22.97	4.59	22.97	4.59	-	-	22.52	4.50	22.52	4.50		
<b>Total</b>	<b>0.00</b>	<b>0.00</b>	<b>372.22</b>	<b>118.46</b>	<b>372.22</b>	<b>118.46</b>	<b>0.00</b>	<b>0.00</b>	<b>360.79</b>	<b>87.63</b>	<b>360.79</b>	<b>87.63</b>		
Change From Previous Year			+3.2%	+35.2%	+3.2%	+35.2%			-2.4%	+9.0%	-2.4%	+9.0%		
<b>Fall + Winter:</b>							Full-time	<b>744.44</b>	<b>Fall + Winter:</b>				Full-time	<b>721.58</b>
							Part-time	<b>236.92</b>					Part-time	<b>175.26</b>

Nursing	Summer 2005		Fall 2005		Winter 2006		Summer 2004		Fall 2004		Winter 2005			
	Full-time	Part-time	Full-time	Part-time	Full-time	Part-time	Full-time	Part-time	Full-time	Part-time	Full-time	Part-time		
Nursing Students' Council	-	-	19.50	1.00	19.50	1.00	-	-	19.50	1.00	19.50	1.00		
Students' Administrative Council	-	-	105.94	-	105.94	-	-	-	99.19	-	99.19	-		
Association of Part-time Undergraduate Students	-	-	-	67.33	-	67.33	-	-	-	37.44	-	37.44		
U of T Community Radio	-	-	2.50	-	2.50	-	-	-	2.50	-	2.50	-		
The Varsity	-	-	0.63	-	0.63	-	-	-	0.63	-	0.63	-		
Athletics & Recreation	-	-	99.64	19.93	99.64	19.93	-	-	97.69	19.54	97.69	19.54		
Hart House	-	-	61.52	12.30	61.52	12.30	-	-	60.31	12.06	60.31	12.06		
Health Service	-	-	17.13	3.43	17.13	3.43	-	-	17.13	3.43	17.13	3.43		
Student Services	-	-	54.39	10.88	54.39	10.88	-	-	53.32	10.66	53.32	10.66		
Student Affairs	-	-	22.97	4.59	22.97	4.59	-	-	22.52	4.50	22.52	4.50		
<b>Total</b>	<b>0.00</b>	<b>0.00</b>	<b>384.22</b>	<b>119.46</b>	<b>384.22</b>	<b>119.46</b>	<b>0.00</b>	<b>0.00</b>	<b>372.79</b>	<b>88.63</b>	<b>372.79</b>	<b>88.63</b>		
Change From Previous Year			+3.1%	+34.8%	+3.1%	+34.8%			-2.3%	+8.9%	-2.3%	+8.9%		
<b>Fall + Winter:</b>							Full-time	<b>768.44</b>	<b>Fall + Winter:</b>				Full-time	<b>745.58</b>
							Part-time	<b>238.92</b>					Part-time	<b>177.26</b>

OISE / UT B.Ed. and Diploma in Technological Studies	Summer 2005		Fall 2005		Winter 2006		Summer 2004		Fall 2004		Winter 2005			
	Full-time	Part-time	Full-time	Part-time	Full-time	Part-time	Full-time	Part-time	Full-time	Part-time	Full-time	Part-time		
Student Teachers' Union	-	-	30.00	-	30.00	-	-	-	30.00	-	30.00	-		
Students' Administrative Council	-	-	105.94	-	105.94	-	-	-	99.19	-	99.19	-		
Association of Part-time Undergraduate Students	-	-	-	67.33	-	67.33	-	-	-	37.44	-	37.44		
U of T Community Radio	-	-	2.50	-	2.50	-	-	-	2.50	-	2.50	-		
The Varsity	-	-	0.63	-	0.63	-	-	-	0.63	-	0.63	-		
Athletics & Recreation	-	-	99.64	19.93	99.64	19.93	-	-	97.69	19.54	97.69	19.54		
Hart House	-	-	61.52	12.30	61.52	12.30	-	-	60.31	12.06	60.31	12.06		
Health Service	-	-	17.13	3.43	17.13	3.43	-	-	17.13	3.43	17.13	3.43		
Student Services	-	-	54.39	10.88	54.39	10.88	-	-	53.32	10.66	53.32	10.66		
Student Affairs	-	-	22.97	4.59	22.97	4.59	-	-	22.52	4.50	22.52	4.50		
<b>Total</b>	<b>0.00</b>	<b>0.00</b>	<b>394.72</b>	<b>118.46</b>	<b>394.72</b>	<b>118.46</b>	<b>0.00</b>	<b>0.00</b>	<b>383.29</b>	<b>0.00</b>	<b>383.29</b>	<b>0.00</b>		
Change From Previous Year			+3.0%		+3.0%				-2.2%		-2.2%			
<b>Fall + Winter:</b>							Full-time	<b>789.44</b>	<b>Fall + Winter:</b>				Full-time	<b>766.58</b>
							Part-time	<b>236.92</b>					Part-time	<b>0.00</b>

Pharmacy	Summer 2005		Fall 2005		Winter 2006		Summer 2004		Fall 2004		Winter 2005			
	Full-time	Part-time	Full-time	Part-time	Full-time	Part-time	Full-time	Part-time	Full-time	Part-time	Full-time	Part-time		
Undergraduate Pharmaceutical Society	-	-	30.38	0.00	30.38	0.00	-	-	28.75	0.00	28.75	0.00		
Students' Administrative Council	-	-	105.94	-	105.94	-	-	-	99.19	-	99.19	-		
Association of Part-time Undergraduate Students	-	-	-	67.33	-	67.33	-	-	-	37.44	-	37.44		
U of T Community Radio	-	-	2.50	-	2.50	-	-	-	2.50	-	2.50	-		
The Varsity	-	-	0.63	-	0.63	-	-	-	0.63	-	0.63	-		
Athletics & Recreation	-	-	99.64	19.93	99.64	19.93	-	-	97.69	19.54	97.69	19.54		
Hart House	-	-	61.52	12.30	61.52	12.30	-	-	60.31	12.06	60.31	12.06		
Health Service	-	-	17.13	3.43	17.13	3.43	-	-	17.13	3.43	17.13	3.43		
Student Services	-	-	54.39	10.88	54.39	10.88	-	-	53.32	10.66	53.32	10.66		
Student Affairs	-	-	22.97	4.59	22.97	4.59	-	-	22.52	4.50	22.52	4.50		
<b>Total</b>	<b>0.00</b>	<b>0.00</b>	<b>395.10</b>	<b>118.46</b>	<b>395.10</b>	<b>118.46</b>	<b>0.00</b>	<b>0.00</b>	<b>382.04</b>	<b>87.63</b>	<b>382.04</b>	<b>87.63</b>		
Change From Previous Year			+3.4%	+35.2%	+3.4%	+35.2%			-2.2%	+9.0%	-2.2%	+9.0%		
<b>Fall + Winter:</b>							Full-time	<b>790.20</b>	<b>Fall + Winter:</b>				Full-time	<b>764.08</b>
							Part-time	<b>236.92</b>					Part-time	<b>175.26</b>

Compulsory Non-Academic Incidental Fees

UNDERGRADUATE PROFESSIONAL DIVISIONS (continued)

Physical Education & Health	Summer 2005		Fall 2005		Winter 2006		Summer 2004		Fall 2004		Winter 2005		
	Full-time	Part-time	Full-time	Part-time	Full-time	Part-time	Full-time	Part-time	Full-time	Part-time	Full-time	Part-time	
Physical & Health Education Undergraduate Association	-	-	17.50	0.00	17.50	0.00	-	-	17.50	0.00	17.50	0.00	
Students' Administrative Council	-	-	105.94	-	105.94	-	-	-	99.19	-	99.19	-	
Association of Part-time Undergraduate Students	-	-	-	67.33	-	67.33	-	-	-	37.44	-	37.44	
U of T Community Radio	-	-	2.50	-	2.50	-	-	-	2.50	-	2.50	-	
The Varsity	-	-	0.63	-	0.63	-	-	-	0.63	-	0.63	-	
Athletics & Recreation	-	-	99.64	19.93	99.64	19.93	-	-	97.69	19.54	97.69	19.54	
Hart House	-	-	61.52	12.30	61.52	12.30	-	-	60.31	12.06	60.31	12.06	
Health Service	-	-	17.13	3.43	17.13	3.43	-	-	17.13	3.43	17.13	3.43	
Student Services	-	-	54.39	10.88	54.39	10.88	-	-	53.32	10.66	53.32	10.66	
Student Affairs	-	-	22.97	4.59	22.97	4.59	-	-	22.52	4.50	22.52	4.50	
<b>Total</b>	<b>0.00</b>	<b>0.00</b>	<b>382.22</b>	<b>118.46</b>	<b>382.22</b>	<b>118.46</b>	<b>0.00</b>	<b>0.00</b>	<b>370.79</b>	<b>87.63</b>	<b>370.79</b>	<b>87.63</b>	
Change From Previous Year			+3.1%	+35.2%	+3.1%	+35.2%			-2.3%	+9.0%	-2.3%	+9.0%	
			<b>Fall + Winter:</b>		Full-time <b>764.44</b>					<b>Fall + Winter:</b>		Full-time <b>741.58</b>	
					Part-time <b>236.92</b>							Part-time <b>175.26</b>	

OTHER PROGRAMS

Toronto School of Theology	Summer 2005		Fall 2005		Winter 2006		Summer 2004		Fall 2004		Winter 2005		
	Full-time	Part-time	Full-time	Part-time	Full-time	Part-time	Full-time	Part-time	Full-time	Part-time	Full-time	Part-time	
Basic Degree Students (not including college fees)	-	-	-	-	-	-	-	-	-	-	-	-	
Students' Administrative Council	-	-	105.94	-	105.94	-	-	-	99.19	-	99.19	-	
Athletics & Recreation	-	-	99.64	19.93	99.64	19.93	-	-	97.69	19.54	97.69	19.54	
Hart House	-	-	61.52	12.30	61.52	12.30	-	-	60.31	12.06	60.31	12.06	
Health Service	-	-	17.13	3.43	17.13	3.43	-	-	17.13	3.43	17.13	3.43	
Student Services	-	-	54.39	10.88	54.39	10.88	-	-	53.32	10.66	53.32	10.66	
Student Affairs	-	-	15.67	3.13	15.67	3.13	-	-	14.57	2.91	14.57	2.91	
<b>Total</b>	<b>0.00</b>	<b>0.00</b>	<b>354.29</b>	<b>49.67</b>	<b>354.29</b>	<b>49.67</b>	<b>0.00</b>	<b>0.00</b>	<b>342.21</b>	<b>48.60</b>	<b>342.21</b>	<b>48.60</b>	
Change From Previous Year			+3.5%	+2.2%	+3.5%	+2.2%			-2.6%	+3.9%	-2.6%	+3.9%	
			<b>Fall + Winter:</b>		Full-time <b>708.58</b>					<b>Fall + Winter:</b>		Full-time <b>684.42</b>	
					Part-time <b>99.34</b>							Part-time <b>97.20</b>	

Transitional Year Program	Summer 2005		Fall 2005		Winter 2006		Summer 2004		Fall 2004		Winter 2005		
	Full-time	Part-time	Full-time	Part-time	Full-time	Part-time	Full-time	Part-time	Full-time	Part-time	Full-time	Part-time	
Student Association of the Transitional Year Program	-	-	15.00	0.00	15.00	0.00	-	-	15.00	0.00	15.00	0.00	
Students' Administrative Council	-	-	105.94	-	105.94	-	-	-	99.19	-	99.19	-	
Association of Part-time Undergraduate Students	-	-	-	67.33	-	67.33	-	-	-	37.44	-	37.44	
U of T Community Radio	-	-	2.50	-	2.50	-	-	-	2.50	-	2.50	-	
The Varsity	-	-	0.63	-	0.63	-	-	-	0.63	-	0.63	-	
Athletics & Recreation	-	-	99.64	19.93	99.64	19.93	-	-	97.69	19.54	97.69	19.54	
Hart House	-	-	61.52	12.30	61.52	12.30	-	-	60.31	12.06	60.31	12.06	
Health Service	-	-	17.13	3.43	17.13	3.43	-	-	17.13	3.43	17.13	3.43	
Student Services	-	-	54.39	10.88	54.39	10.88	-	-	53.32	10.66	53.32	10.66	
Student Affairs	-	-	22.97	4.59	22.97	4.59	-	-	22.52	4.50	22.52	4.50	
<b>Total</b>	<b>0.00</b>	<b>0.00</b>	<b>379.72</b>	<b>118.46</b>	<b>379.72</b>	<b>118.46</b>	<b>0.00</b>	<b>0.00</b>	<b>368.29</b>	<b>87.63</b>	<b>368.29</b>	<b>87.63</b>	
Change From Previous Year			+3.1%	+35.2%	+3.1%	+35.2%			-2.3%	+9.0%	-2.3%	+9.0%	
			<b>Fall + Winter:</b>		Full-time <b>759.44</b>					<b>Fall + Winter:</b>		Full-time <b>736.58</b>	
					Part-time <b>236.92</b>							Part-time <b>175.26</b>	

Woodsworth College	Summer 2005		Fall 2005		Winter 2006		Summer 2004		Fall 2004		Winter 2005			
	Full-time	Part-time	Full-time	Part-time	Full-time	Part-time	Full-time	Part-time	Full-time	Part-time	Full-time	Part-time		
Certificate, Diploma, and Other Programs	15.00	15.00	7.50	7.50	7.50	7.50	50.00	50.00	25.00	25.00	25.00	25.00		
Woodsworth College Students' Association	25.75	-	105.94	-	105.94	-	16.65	-	99.19	-	99.19	-		
Students' Administrative Council	-	14.14	-	67.33	-	67.33	-	11.00	-	37.44	-	37.44		
Association of Part-time Undergraduate Students	5.50	-	5.50	-	5.50	-	5.50	-	5.50	-	5.50	-		
Arts & Science Students' Union	2.50	-	2.50	-	2.50	-	2.50	-	2.50	-	2.50	-		
U of T Community Radio	0.63	-	0.63	-	0.63	-	0.63	-	0.63	-	0.63	-		
The Varsity	99.64	19.93	99.64	19.93	99.64	19.93	97.69	19.54	97.69	19.54	97.69	19.54		
Athletics & Recreation	61.52	12.30	61.52	12.30	61.52	12.30	60.31	12.06	60.31	12.06	60.31	12.06		
Hart House	17.13	3.43	17.13	3.43	17.13	3.43	17.13	3.43	17.13	3.43	17.13	3.43		
Health Service	54.39	10.88	54.39	10.88	54.39	10.88	53.32	10.66	53.32	10.66	53.32	10.66		
Student Services	22.97	4.59	22.97	4.59	22.97	4.59	22.52	4.50	22.52	4.50	22.52	4.50		
Student Affairs	<b>Total</b>	<b>305.03</b>	<b>80.27</b>	<b>377.72</b>	<b>125.96</b>	<b>377.72</b>	<b>125.96</b>	<b>326.25</b>	<b>111.19</b>	<b>383.79</b>	<b>112.63</b>	<b>383.79</b>	<b>112.63</b>	
Change From Previous Year			-6.5%	-27.8%	-1.6%	+11.8%	-1.6%	+11.8%	+9.7%	+1.7%	-2.2%	+6.8%	-2.2%	+6.8%
			<b>Fall + Winter:</b>		Full-time <b>755.44</b>					<b>Fall + Winter:</b>		Full-time <b>767.58</b>		
					Part-time <b>251.92</b>							Part-time <b>225.26</b>		



Compulsory Non-Academic Incidental Fees

GRADUATE STUDIES

Graduate Studies St. George	Summer 2005		Fall 2005		Winter 2006		Summer 2004		Fall 2004		Winter 2005	
	Full-time	Part-time	Full-time	Part-time	Full-time	Part-time	Full-time	Part-time	Full-time	Part-time	Full-time	Part-time
Graduate Students' Union	-	41.42	119.03	22.33	119.03	22.33	-	37.43	106.89	21.96	106.89	21.96
Athletics & Recreation	-	19.93	99.64	19.93	99.64	19.93	-	19.54	97.69	19.54	97.69	19.54
Hart House	-	12.30	61.52	12.30	61.52	12.30	-	12.06	60.31	12.06	60.31	12.06
Health Service	-	3.43	17.13	3.43	17.13	3.43	-	3.43	17.13	3.43	17.13	3.43
Student Services	-	10.88	54.39	10.88	54.39	10.88	-	10.66	53.32	10.66	53.32	10.66
Student Affairs	-	4.59	22.97	4.59	22.97	4.59	-	4.50	22.52	4.50	22.52	4.50
<b>Total</b>	<b>0.00</b>	<b>92.55</b>	<b>374.68</b>	<b>73.46</b>	<b>374.68</b>	<b>73.46</b>	<b>0.00</b>	<b>87.62</b>	<b>357.86</b>	<b>72.15</b>	<b>357.86</b>	<b>72.15</b>
Change From Previous Year		+5.6%	+4.7%	+1.8%	+4.7%	+1.8%		+3.3%	+4.1%	+7.7%	+4.1%	+7.7%
		<b>Fall + Winter:</b>		Full-time	<b>749.36</b>			<b>Fall + Winter:</b>		Full-time	<b>715.72</b>	
				Part-time	<b>146.92</b>					Part-time	<b>144.30</b>	

Graduate Studies Mississauga	Summer 2005		Fall 2005		Winter 2006		Summer 2004		Fall 2004		Winter 2005	
	Full-time	Part-time	Full-time	Part-time	Full-time	Part-time	Full-time	Part-time	Full-time	Part-time	Full-time	Part-time
Graduate Students' Union	-	41.42	119.03	22.33	119.03	22.33	-	37.43	106.89	21.96	106.89	21.96
Centre for Physical Education	-	13.61	68.04	13.61	68.04	13.61	-	10.20	51.00	10.20	51.00	10.20
Athletics Building Levy	-	2.73	13.66	2.73	13.66	2.73	-	2.65	13.26	2.65	13.26	2.65
Athletics & Recreation	-	2.50	12.48	2.50	12.48	2.50	-	2.45	12.24	2.45	12.24	2.45
Hart House	-	0.38	1.88	0.38	1.88	0.38	-	0.37	1.84	0.37	1.84	0.37
Health Service	-	3.63	18.15	3.63	18.15	3.63	-	3.50	17.50	3.50	17.50	3.50
Student Services	-	19.84	99.20	19.84	99.20	19.84	-	22.36	111.78	22.36	111.78	22.36
<b>Total</b>	<b>0.00</b>	<b>84.11</b>	<b>332.44</b>	<b>65.02</b>	<b>332.44</b>	<b>65.02</b>	<b>0.00</b>	<b>78.96</b>	<b>314.51</b>	<b>63.49</b>	<b>314.51</b>	<b>63.49</b>
Change From Previous Year		+6.5%	+5.7%	+2.4%	+5.7%	+2.4%		+1.9%	+2.4%	+6.4%	+2.4%	+6.4%
		<b>Fall + Winter:</b>		Full-time	<b>664.88</b>			<b>Fall + Winter:</b>		Full-time	<b>629.02</b>	
				Part-time	<b>130.04</b>					Part-time	<b>126.98</b>	

Graduate Studies Scarborough	Summer 2005		Fall 2005		Winter 2006		Summer 2004		Fall 2004		Winter 2005	
	Full-time	Part-time	Full-time	Part-time	Full-time	Part-time	Full-time	Part-time	Full-time	Part-time	Full-time	Part-time
Graduate Students' Union	-	41.42	119.03	22.33	119.03	22.33	-	37.43	106.89	21.96	106.89	21.96
Scarborough College Athletic Fee	-	16.78	83.90	16.78	83.90	16.78	-	16.29	81.46	16.29	81.46	16.29
Athletics & Recreation	-	2.50	12.48	2.50	12.48	2.50	-	2.45	12.24	2.45	12.24	2.45
Hart House	-	0.38	1.88	0.38	1.88	0.38	-	0.37	1.84	0.37	1.84	0.37
Health Service	-	7.83	39.14	7.83	39.14	7.83	-	7.60	38.00	7.60	38.00	7.60
Student Services	-	21.12	105.61	21.12	105.61	21.12	-	17.32	86.59	17.32	86.59	17.32
<b>Total</b>	<b>0.00</b>	<b>90.03</b>	<b>362.04</b>	<b>70.94</b>	<b>362.04</b>	<b>70.94</b>	<b>0.00</b>	<b>81.46</b>	<b>327.02</b>	<b>65.99</b>	<b>327.02</b>	<b>65.99</b>
Change From Previous Year		+10.5%	+10.7%	+7.5%	+10.7%	+7.5%		+2.3%	+2.9%	+6.8%	+2.9%	+6.8%
		<b>Fall + Winter:</b>		Full-time	<b>724.08</b>			<b>Fall + Winter:</b>		Full-time	<b>654.04</b>	
				Part-time	<b>141.88</b>					Part-time	<b>131.98</b>	

Graduate Studies: Faculty of Information Studies Information Studies	Summer 2005		Fall 2005		Winter 2006		Summer 2004		Fall 2004		Winter 2005	
	Full-time	Part-time	Full-time	Part-time	Full-time	Part-time	Full-time	Part-time	Full-time	Part-time	Full-time	Part-time
Information Studies Student Council	-	0.00	50.00	25.00	50.00	25.00	-	0.00	50.00	25.00	50.00	25.00
Graduate Students' Union	-	41.42	119.03	22.33	119.03	22.33	-	37.43	106.89	21.96	106.89	21.96
Athletics & Recreation	-	19.93	99.64	19.93	99.64	19.93	-	19.54	97.69	19.54	97.69	19.54
Hart House	-	12.30	61.52	12.30	61.52	12.30	-	12.06	60.31	12.06	60.31	12.06
Health Service	-	3.43	17.13	3.43	17.13	3.43	-	3.43	17.13	3.43	17.13	3.43
Student Services	-	10.88	54.39	10.88	54.39	10.88	-	10.66	53.32	10.66	53.32	10.66
Student Affairs	-	4.59	22.97	4.59	22.97	4.59	-	4.50	22.52	4.50	22.52	4.50
<b>Total</b>	<b>0.00</b>	<b>92.55</b>	<b>424.68</b>	<b>98.46</b>	<b>424.68</b>	<b>98.46</b>	<b>0.00</b>	<b>87.62</b>	<b>407.86</b>	<b>97.15</b>	<b>407.86</b>	<b>97.15</b>
Change From Previous Year		+5.6%	+4.1%	+1.3%	+4.1%	+1.3%		+3.3%	+3.6%	+5.6%	+3.6%	+5.6%
		<b>Fall + Winter:</b>		Full-time	<b>849.36</b>			<b>Fall + Winter:</b>		Full-time	<b>815.72</b>	
				Part-time	<b>196.92</b>					Part-time	<b>194.30</b>	

Graduate Studies: Rotman School of Management MBA (Degree Students)	Summer 2005		Fall 2005		Winter 2006		Summer 2004		Fall 2004		Winter 2005	
	Full-time	Part-time	Full-time	Part-time	Full-time	Part-time	Full-time	Part-time	Full-time	Part-time	Full-time	Part-time
Graduate Business Council	-	20.00	20.00	10.00	20.00	10.00	-	20.00	20.00	10.00	20.00	10.00
Graduate Students' Union	-	41.42	119.03	22.33	119.03	22.33	-	37.43	106.89	21.96	106.89	21.96
Athletics & Recreation	-	19.93	99.64	19.93	99.64	19.93	-	19.54	97.69	19.54	97.69	19.54
Hart House	-	12.30	61.52	12.30	61.52	12.30	-	12.06	60.31	12.06	60.31	12.06
Health Service	-	3.43	17.13	3.43	17.13	3.43	-	3.43	17.13	3.43	17.13	3.43
Student Services	-	10.88	54.39	10.88	54.39	10.88	-	10.66	53.32	10.66	53.32	10.66
Student Affairs	-	4.59	22.97	4.59	22.97	4.59	-	4.50	22.52	4.50	22.52	4.50
<b>Total</b>	<b>0.00</b>	<b>112.55</b>	<b>394.68</b>	<b>83.46</b>	<b>394.68</b>	<b>83.46</b>	<b>0.00</b>	<b>107.62</b>	<b>377.86</b>	<b>82.15</b>	<b>377.86</b>	<b>82.15</b>
Change From Previous Year		+4.6%	+4.5%	+1.6%	+4.5%	+1.6%		+2.7%	+3.9%	+6.7%	+3.9%	+6.7%
		<b>Fall + Winter:</b>		Full-time	<b>789.36</b>			<b>Fall + Winter:</b>		Full-time	<b>755.72</b>	
				Part-time	<b>166.92</b>					Part-time	<b>164.30</b>	

Compulsory Non-Academic Incidental Fees

**GRADUATE STUDIES (continued)**

Graduate Studies: Rotman School of Management MBA (Special Students)	Summer 2005		Fall 2005		Winter 2006		Summer 2004		Fall 2004		Winter 2005	
	Full-time	Part-time	Full-time	Part-time	Full-time	Part-time	Full-time	Part-time	Full-time	Part-time	Full-time	Part-time
Graduate Students' Union	-	-	119.03	-	119.03	-	-	-	106.89	-	106.89	-
Athletics & Recreation	-	-	99.64	-	99.64	-	-	-	97.69	-	97.69	-
Hart House	-	-	61.52	-	61.52	-	-	-	60.31	-	60.31	-
Health Service	-	-	17.13	-	17.13	-	-	-	17.13	-	17.13	-
Student Services	-	-	54.39	-	54.39	-	-	-	53.32	-	53.32	-
Student Affairs	-	-	22.97	-	22.97	-	-	-	22.52	-	22.52	-
<b>Total</b>	<b>0.00</b>	<b>0.00</b>	<b>374.68</b>	<b>0.00</b>	<b>374.68</b>	<b>0.00</b>	<b>0.00</b>	<b>0.00</b>	<b>357.86</b>	<b>0.00</b>	<b>357.86</b>	<b>0.00</b>
Change From Previous Year			+4.7%		+4.7%				+4.1%		+4.1%	
			<b>Fall + Winter:</b>		Full-time <b>749.36</b>				<b>Fall + Winter:</b>		Full-time <b>715.72</b>	
					Part-time <b>0.00</b>						Part-time <b>0.00</b>	

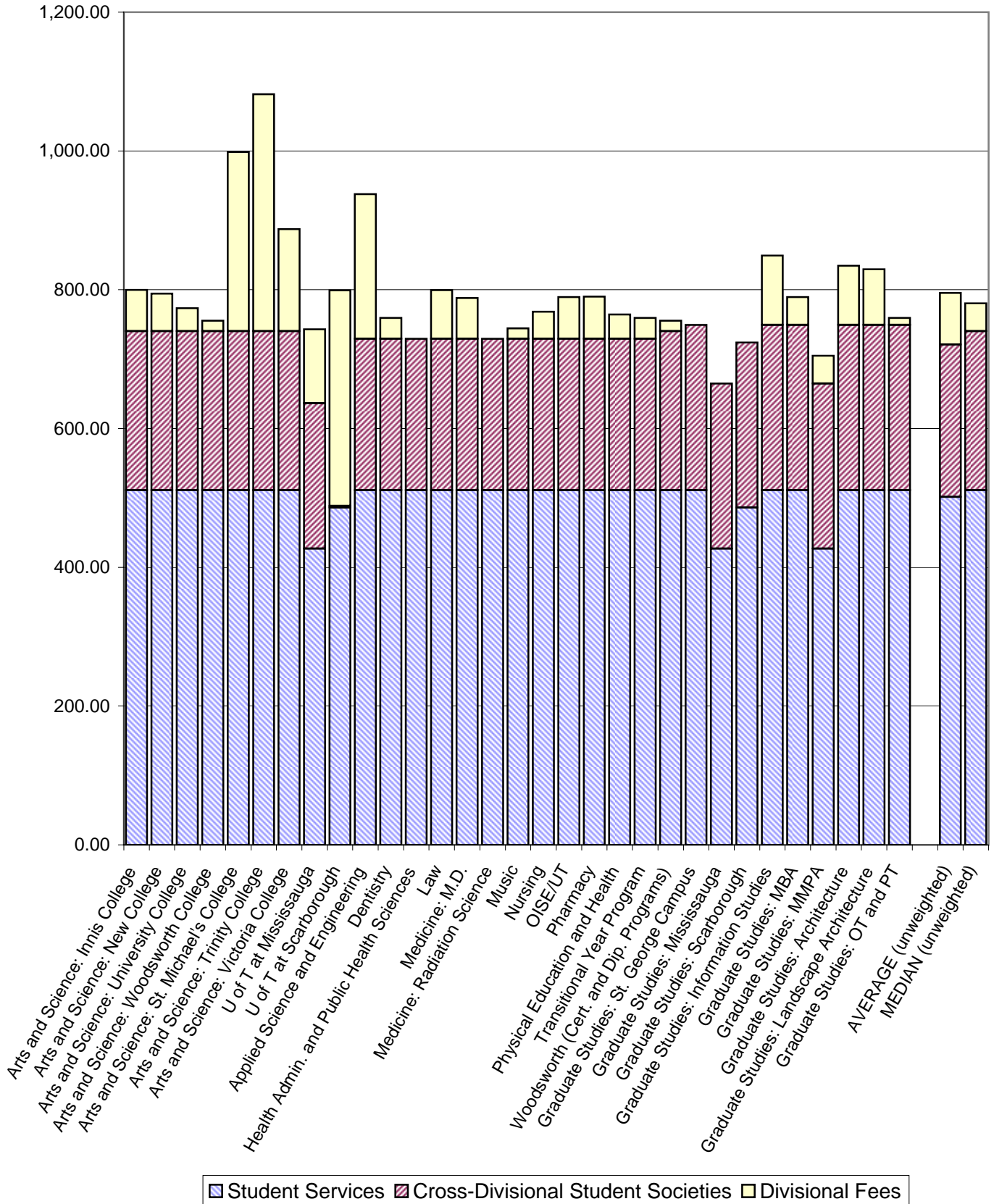
Graduate Studies: Rotman School of Management MMPA (Mississauga)	Full-time		Full-time		Full-time		Full-time		Full-time		Full-time	
	Full-time	Part-time	Full-time	Part-time	Full-time	Part-time	Full-time	Part-time	Full-time	Part-time	Full-time	Part-time
Graduate Business Council	-	-	20.00	-	20.00	-	-	-	20.00	-	20.00	-
Graduate Students' Union	-	-	119.03	-	119.03	-	-	-	106.89	-	106.89	-
Centre for Physical Education	-	-	68.04	-	68.04	-	-	-	51.00	-	51.00	-
Athletics Building Levy	-	-	13.66	-	13.66	-	-	-	13.26	-	13.26	-
Athletics & Recreation	-	-	12.48	-	12.48	-	-	-	12.24	-	12.24	-
Hart House	-	-	1.88	-	1.88	-	-	-	1.84	-	1.84	-
Health Service	-	-	18.15	-	18.15	-	-	-	17.50	-	17.50	-
Student Services	-	-	99.20	-	99.20	-	-	-	111.78	-	111.78	-
<b>Total</b>	<b>0.00</b>	<b>0.00</b>	<b>352.44</b>	<b>0.00</b>	<b>352.44</b>	<b>0.00</b>	<b>0.00</b>	<b>0.00</b>	<b>334.51</b>	<b>0.00</b>	<b>334.51</b>	<b>0.00</b>
Change From Previous Year			+5.4%		+5.4%							
			<b>System Access Fee Full-time</b>		<b>704.88</b>				<b>System Access Fee Full-time</b>		<b>669.02</b>	
					Part-time <b>0.00</b>						Part-time <b>0.00</b>	

Graduate Studies: Architecture, Landscape & Design Architecture Students and Urban Design Students	Summer 2005		Fall 2005		Winter 2006		Summer 2004		Fall 2004		Winter 2005	
	Full-time	Part-time	Full-time	Part-time	Full-time	Part-time	Full-time	Part-time	Full-time	Part-time	Full-time	Part-time
Graduate Architecture, Landscape & Design Student Union	-	0.00	42.50	25.00	42.50	25.00	-	0.00	42.50	25.00	42.50	25.00
Graduate Students' Union	-	41.42	119.03	22.33	119.03	22.33	-	37.43	106.89	21.96	106.89	21.96
Athletics & Recreation	-	19.93	99.64	19.93	99.64	19.93	-	19.54	97.69	19.54	97.69	19.54
Hart House	-	12.30	61.52	12.30	61.52	12.30	-	12.06	60.31	12.06	60.31	12.06
Health Service	-	3.43	17.13	3.43	17.13	3.43	-	3.43	17.13	3.43	17.13	3.43
Student Services	-	10.88	54.39	10.88	54.39	10.88	-	10.66	53.32	10.66	53.32	10.66
Student Affairs	-	4.59	22.97	4.59	22.97	4.59	-	4.50	22.52	4.50	22.52	4.50
<b>Total</b>	<b>0.00</b>	<b>92.55</b>	<b>417.18</b>	<b>98.46</b>	<b>417.18</b>	<b>98.46</b>	<b>0.00</b>	<b>87.62</b>	<b>400.36</b>	<b>97.15</b>	<b>400.36</b>	<b>97.15</b>
Change From Previous Year		+5.6%	+4.2%	+1.3%	+4.2%	+1.3%		+3.3%	+3.6%	+5.6%	+3.6%	+5.6%
			<b>Fall + Winter:</b>		Full-time <b>834.36</b>				<b>Fall + Winter:</b>		Full-time <b>800.72</b>	
					Part-time <b>196.92</b>						Part-time <b>194.30</b>	

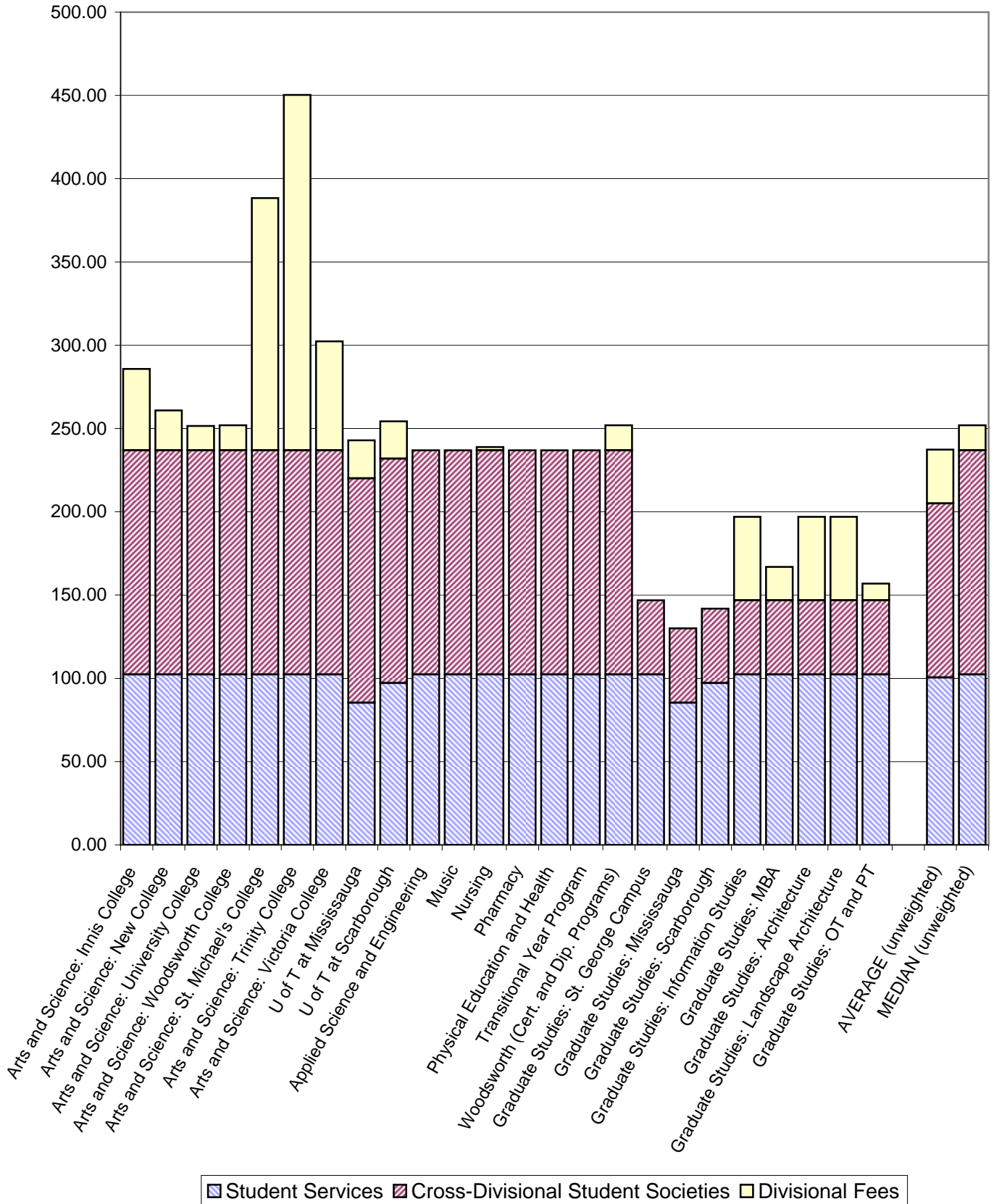
Graduate Studies: Architecture, Landscape & Design Landscape Architecture Students	Summer 2005		Fall 2005		Winter 2006		Summer 2004		Fall 2004		Winter 2005	
	Full-time	Part-time	Full-time	Part-time	Full-time	Part-time	Full-time	Part-time	Full-time	Part-time	Full-time	Part-time
Graduate Architecture, Landscape & Design Student Union	-	0.00	40.00	25.00	40.00	25.00	-	0.00	40.00	25.00	40.00	25.00
Graduate Students' Union	-	41.42	119.03	22.33	119.03	22.33	-	37.43	106.89	21.96	106.89	21.96
Athletics & Recreation	-	19.93	99.64	19.93	99.64	19.93	-	19.54	97.69	19.54	97.69	19.54
Hart House	-	12.30	61.52	12.30	61.52	12.30	-	12.06	60.31	12.06	60.31	12.06
Health Service	-	3.43	17.13	3.43	17.13	3.43	-	3.43	17.13	3.43	17.13	3.43
Student Services	-	10.88	54.39	10.88	54.39	10.88	-	10.66	53.32	10.66	53.32	10.66
Student Affairs	-	4.59	22.97	4.59	22.97	4.59	-	4.50	22.52	4.50	22.52	4.50
<b>Total</b>	<b>0.00</b>	<b>92.55</b>	<b>414.68</b>	<b>98.46</b>	<b>414.68</b>	<b>98.46</b>	<b>0.00</b>	<b>87.62</b>	<b>397.86</b>	<b>97.15</b>	<b>397.86</b>	<b>97.15</b>
Change From Previous Year		+5.6%	+4.2%	+1.3%	+4.2%	+1.3%		+3.3%	+3.7%	+5.6%	+3.7%	+5.6%
			<b>Fall + Winter:</b>		Full-time <b>829.36</b>				<b>Fall + Winter:</b>		Full-time <b>795.72</b>	
					Part-time <b>196.92</b>						Part-time <b>194.30</b>	

Graduate Studies Occupational Therapy and Physical Therapy	Summer 2005		Fall 2005		Winter 2006		Summer 2004		Fall 2004		Winter 2005	
	Full-time	Part-time	Full-time	Part-time	Full-time	Part-time	Full-time	Part-time	Full-time	Part-time	Full-time	Part-time
Occupational Therapy & Physical Therapy Graduate Students	-	0.00	5.00	5.00	5.00	5.00	-	0.00	5.00	5.00	5.00	5.00
Graduate Students' Union	-	41.42	119.03	22.33	119.03	22.33	-	37.43	106.89	21.96	106.89	21.96
Athletics & Recreation	-	19.93	99.64	19.93	99.64	19.93	-	19.54	97.69	19.54	97.69	19.54
Hart House	-	12.30	61.52	12.30	61.52	12.30	-	12.06	60.31	12.06	60.31	12.06
Health Service	-	3.43	17.13	3.43	17.13	3.43	-	3.43	17.13	3.43	17.13	3.43
Student Services	-	10.88	54.39	10.88	54.39	10.88	-	10.66	53.32	10.66	53.32	10.66
Student Affairs	-	4.59	22.97	4.59	22.97	4.59	-	4.50	22.52	4.50	22.52	4.50
<b>Total</b>	<b>0.00</b>	<b>92.55</b>	<b>379.68</b>	<b>78.46</b>	<b>379.68</b>	<b>78.46</b>	<b>0.00</b>	<b>87.62</b>	<b>362.86</b>	<b>77.15</b>	<b>362.86</b>	<b>77.15</b>
Change From Previous Year		+5.6%	+4.6%	+1.7%	+4.6%	+1.7%		+3.3%	+4.0%	+7.2%	+4.0%	+7.2%
			<b>Fall + Winter:</b>		Full-time <b>759.36</b>				<b>Fall + Winter:</b>		Full-time <b>725.72</b>	
					Part-time <b>156.92</b>						Part-time <b>154.30</b>	

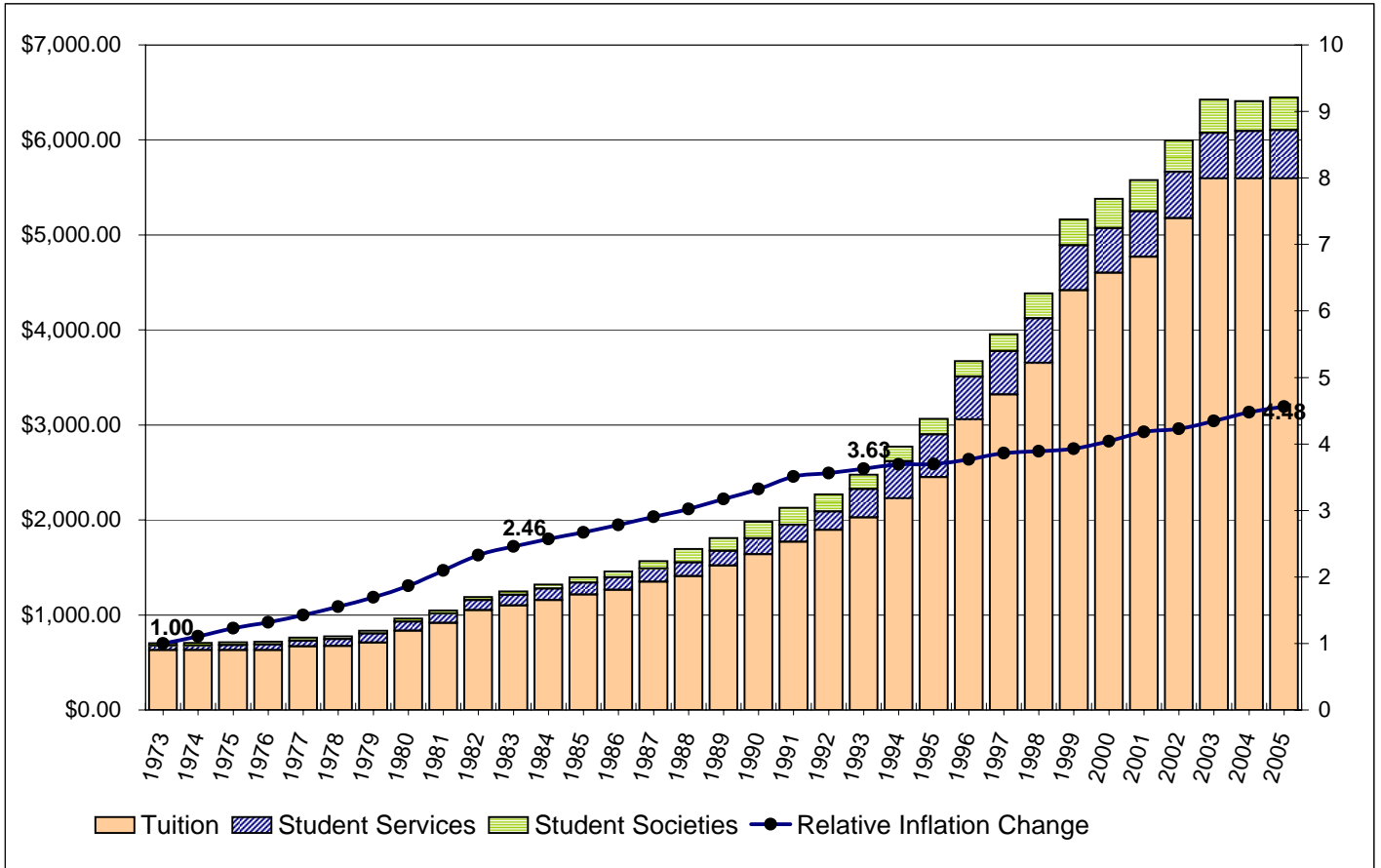
Typical Fall/Winter Incidental Fees (Full-time Students)



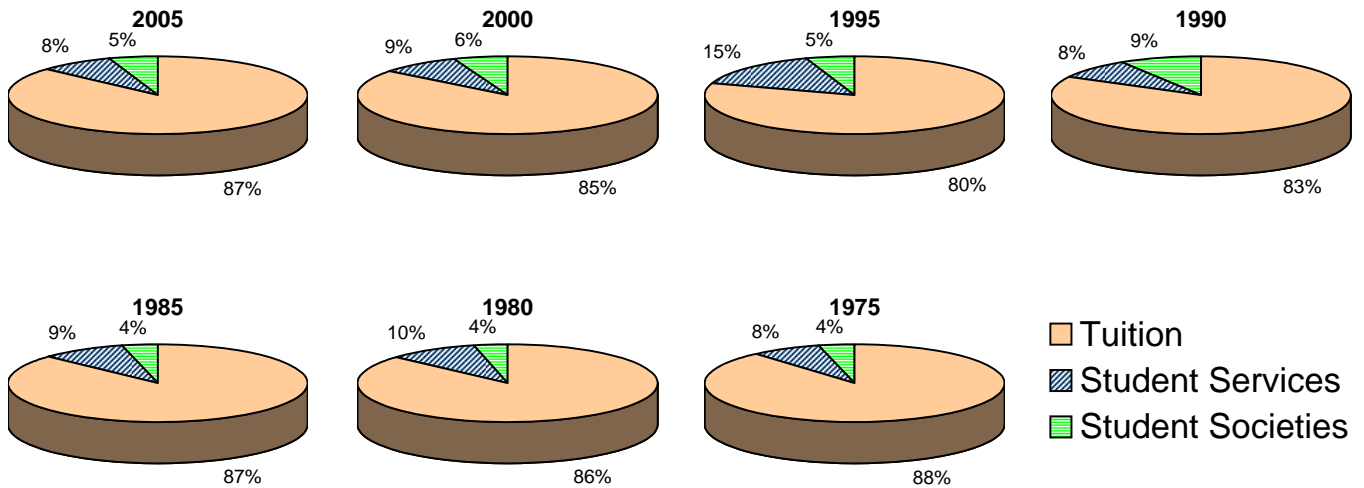
Typical Fall/Winter Incidental Fees (Part-time Students)



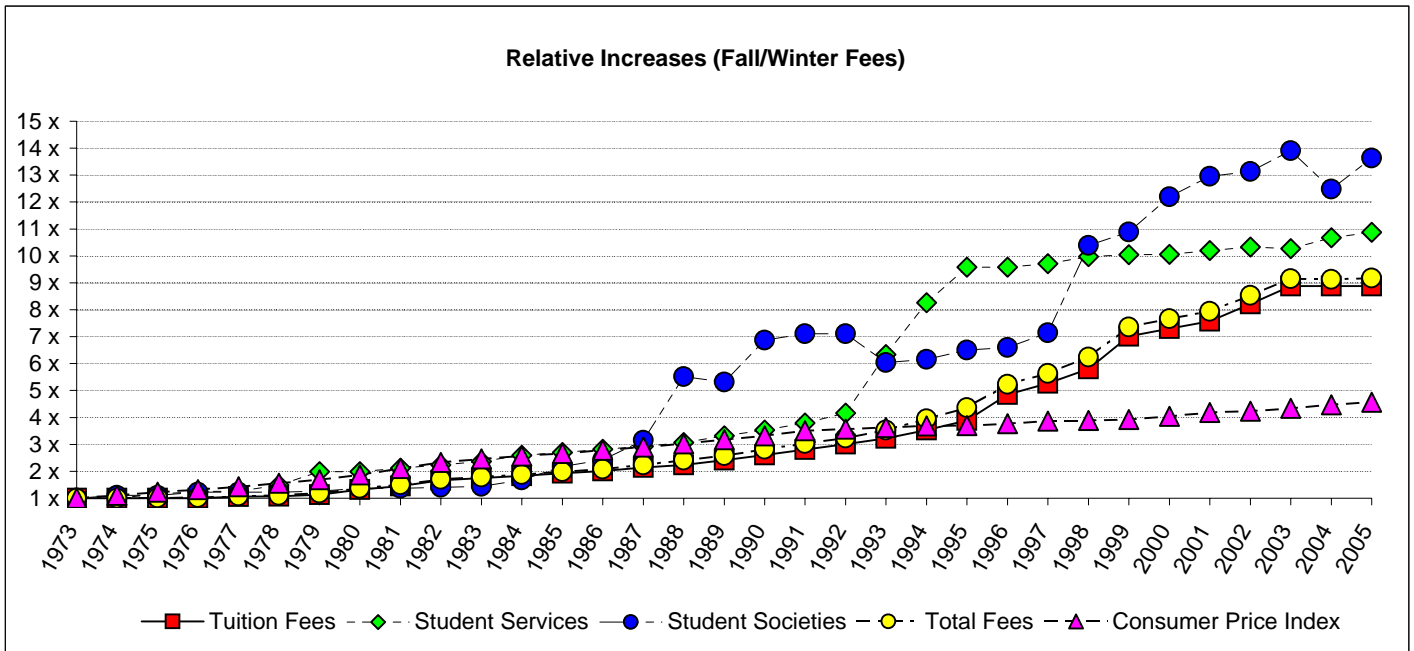
## Typical Fall-Winter Full-time Student Fees Since 1973



The fees for a "typical fall-winter full-time student" are the average fees charged through the fall and winter academic period to a full-time University College student (with a course load of 5.0 FCE) and a full-time first year Applied Science and Engineering student. See next page for data.



## Compulsory Non-Academic Incidental Fees



Data Used for Charts on Pages 13-14

YEAR	RELATIVE CHANGES					TOTAL FALL-WINTER FEES				STUDENT SERVICE FEES				STUDENT SOCIETY FEES			CONSUMER PRICE INDEX
	Tuition Fees	Student Services	Student Societies	Inflation	Total Fees	Tuition Fees	Student Services (Total)	Student Societies (UC/Eng. Ave+SAC)	Total Fees	Athletics & Recreation	Hart House	Health Service	Student Services + Student Affairs	U.C. Lit. + ASSU	Eng. Society	SAC St. George + Varsity + CIUT	
1973	1.00	1.00	1.00	1.00	1.00	\$630.00	\$47.00	\$25.25	\$702.25	\$15.00	\$20.00	\$12.00		\$10.00	\$12.50	\$14.00	7.8%
1974	1.00	1.00	1.11	1.11	1.00	\$630.00	\$47.00	\$28.00	\$705.00	\$15.00	\$20.00	\$12.00		\$10.00	\$15.00	\$15.50	10.8%
1975	1.00	1.15	1.11	1.23	1.01	\$630.00	\$54.00	\$28.00	\$712.00	\$20.00	\$22.00	\$12.00		\$10.00	\$15.00	\$15.50	10.8%
1976	1.00	1.26	1.23	1.32	1.03	\$630.00	\$59.00	\$31.00	\$720.00	\$25.00	\$22.00	\$12.00		\$16.00	\$17.00	\$14.50	7.5%
1977	1.06	1.27	1.23	1.43	1.08	\$670.00	\$59.50	\$31.00	\$760.50	\$25.00	\$22.00	\$12.50		\$16.00	\$17.00	\$14.50	8.0%
1978	1.07	1.49	1.23	1.55	1.11	\$675.00	\$70.00	\$31.00	\$776.00	\$26.50	\$25.00	\$18.50		\$16.00	\$17.00	\$14.50	9.0%
1979	1.13	1.99	1.27	1.69	1.19	\$710.00	\$93.50	\$32.00	\$835.50	\$43.00	\$32.00	\$18.50		\$18.00	\$17.00	\$14.50	9.1%
1980	1.33	1.99	1.37	1.87	1.37	\$835.00	\$93.50	\$34.50	\$963.00	\$43.00	\$32.00	\$18.50		\$18.00	\$22.00	\$14.50	10.2%
1981	1.45	2.12	1.37	2.10	1.49	\$915.00	\$99.50	\$34.50	\$1,049.00	\$47.00	\$34.00	\$18.50		\$18.00	\$22.00	\$14.50	12.4%
1982	1.67	2.24	1.41	2.33	1.70	\$1,050.00	\$105.25	\$35.50	\$1,190.75	\$49.75	\$37.00	\$18.50		\$20.00	\$22.00	\$14.50	10.9%
1983	1.75	2.36	1.44	2.46	1.78	\$1,102.00	\$111.00	\$36.25	\$1,249.25	\$52.50	\$40.00	\$18.50		\$20.00	\$22.00	\$15.25	5.7%
1984	1.84	2.60	1.67	2.57	1.88	\$1,157.00	\$122.00	\$42.25	\$1,321.25	\$55.50	\$43.00	\$23.50		\$26.00	\$22.00	\$18.25	4.4%
1985	1.93	2.70	2.17	2.67	1.99	\$1,215.00	\$126.75	\$54.88	\$1,396.63	\$58.25	\$45.00	\$23.50		\$26.00	\$41.25	\$21.25	3.9%
1986	2.01	2.81	2.43	2.78	2.08	\$1,265.00	\$132.25	\$61.38	\$1,458.63	\$60.75	\$48.00	\$23.50		\$26.00	\$46.75	\$25.00	4.2%
1987	2.14	2.93	3.15	2.90	2.23	\$1,350.00	\$137.50	\$79.54	\$1,567.04	\$63.50	\$50.50	\$23.50		\$40.75	\$49.75	\$34.29	4.4%
1988	2.24	3.07	5.52	3.02	2.41	\$1,410.00	\$144.25	\$139.42	\$1,693.67	\$67.75	\$53.00	\$23.50		\$40.75	\$155.50	\$41.29	4.0%
1989	2.41	3.32	5.32	3.17	2.58	\$1,520.00	\$156.00	\$134.29	\$1,810.29	\$72.25	\$56.75	\$27.00		\$44.50	\$155.50	\$34.29	5.0%
1990	2.60	3.54	6.87	3.32	2.82	\$1,640.00	\$166.25	\$173.50	\$1,979.75	\$76.75	\$61.00	\$28.50		\$52.50	\$160.50	\$67.00	4.8%
1991	2.81	3.80	7.11	3.51	3.03	\$1,770.00	\$178.50	\$179.47	\$2,127.97	\$81.25	\$65.90	\$31.35		\$52.50	\$167.00	\$69.72	5.6%
1992	3.01	4.16	7.11	3.56	3.23	\$1,895.00	\$195.65	\$179.64	\$2,270.29	\$87.00	\$75.40	\$33.25		\$52.50	\$167.87	\$69.45	1.5%
1993	3.22	6.34	6.03	3.63	3.53	\$2,027.65	\$297.92	\$152.35	\$2,477.92	\$94.50	\$108.50	\$33.25	\$61.67	\$54.75	\$168.34	\$40.80	1.8%
1994	3.54	8.27	6.16	3.69	3.95	\$2,228.00	\$388.49	\$155.56	\$2,772.05	\$117.00	\$113.90	\$34.25	\$123.34	\$56.75	\$170.92	\$41.72	1.8%
1995	3.89	9.58	6.50	3.70	4.36	\$2,451.00	\$450.15	\$164.12	\$3,065.27	\$117.00	\$113.90	\$34.25	\$185.00	\$41.75	\$176.00	\$55.24	0.2%
1996	4.85	9.58	6.60	3.77	5.23	\$3,057.00	\$450.15	\$166.63	\$3,673.78	\$117.00	\$113.90	\$34.25	\$185.00	\$41.75	\$176.76	\$57.37	1.9%
1997	5.27	9.71	7.14	3.86	5.63	\$3,319.90	\$456.40	\$180.26	\$3,956.56	\$163.42	\$115.61	\$34.25	\$143.12	\$43.75	\$195.56	\$60.60	2.5%
1998	5.80	9.97	10.39	3.89	6.24	\$3,654.00	\$468.70	\$262.28	\$4,384.98	\$168.81	\$119.66	\$34.25	\$145.98	\$43.75	\$195.82	\$142.49	0.7%
1999	7.01	10.04	10.89	3.93	7.35	\$4,417.50	\$472.07	\$274.96	\$5,164.53	\$172.18	\$119.66	\$34.25	\$145.98	\$44.00	\$196.15	\$154.88	0.9%
2000	7.30	10.05	12.19	4.04	7.66	\$4,600.50	\$472.37	\$307.87	\$5,380.74	\$173.16	\$119.66	\$34.25	\$145.30	\$44.00	\$201.96	\$184.89	2.9%
2001	7.57	10.20	12.96	4.18	7.94	\$4,771.00	\$479.35	\$327.23	\$5,577.58	\$179.56	\$120.24	\$34.25	\$145.30	\$44.00	\$201.96	\$204.25	3.5%
2002	8.22	10.33	13.13	4.23	8.54	\$5,178.50	\$485.62	\$331.51	\$5,995.63	\$179.56	\$124.39	\$34.25	\$147.42	\$44.00	\$177.38	\$220.82	1.1%
2003	8.88	10.27	13.90	4.35	9.15	\$5,592.50	\$482.68	\$351.04	\$6,426.22	\$183.16	\$116.54	\$34.26	\$148.72	\$44.04	\$175.48	\$241.28	2.8%
2004	8.88	10.68	12.48	4.48	9.13	\$5,592.50	\$501.94	\$315.00	\$6,409.44	\$195.38	\$120.62	\$34.26	\$151.68	\$44.04	\$176.68	\$204.64	3.0%
2005	8.88	10.88	13.64	4.56	9.18	\$5,592.50	\$511.30	\$344.38	\$6,448.18	\$199.28	\$123.04	\$34.26	\$154.72	\$44.04	\$208.44	\$218.14	1.9%

**NOTES ON DATA:**

- 1) Prior to 1996-97, tuition is reported as the academic fees paid by either a full-time Applied Science and Engineering student or a full-time Arts & Science student with a course load of 5.0 FCE. Beginning in 1996-97, tuition is reported as the average paid by a full-time year 1 Applied Science and Engineering student and a full-time Arts & Science student with a course load of 5.0 FCE.
- 2) Prior to 1977-78, the Athletics and Recreation fee is reported as the average of the men's athletics fee and the women's athletics fee.
- 3) The Athletics & Recreation and Hart House fees for 1982-83 are reported as the average of the 1981-82 and 1983-84 fees as no records of the 1982-83 fees are available.
- 4) The Consumer Price Index is reported as the Ontario December to December cost of living increase for the previous year as calculated by Statistics Canada.

**Compulsory Non-Academic Incidental Fees  
Schedule of Fees**

**Schedule 1: Student Society Fees**

Student Societies	Summer 2005		Fall 2005		Winter 2006		Summer 2004		Fall 2004		Winter 2005	
	Full-time	Part-time	Full-time	Part-time	Full-time	Part-time	Full-time	Part-time	Full-time	Part-time	Full-time	Part-time
<b>Arts &amp; Science Students' Union</b>												
Society	5.50		5.50		5.50		5.50		5.50		5.50	
<b>TOTAL</b>	<b>\$5.50</b>	<b>\$0.00</b>	<b>\$5.50</b>	<b>\$0.00</b>	<b>\$5.50</b>	<b>\$0.00</b>	<b>\$5.50</b>	<b>\$0.00</b>	<b>\$5.50</b>	<b>\$0.00</b>	<b>\$5.50</b>	<b>\$0.00</b>
Change From Previous Year	+0.0%		+0.0%		+0.0%		+0.0%		+0.0%		+0.0%	
	+0.00		+0.00		+0.00		+0.00		+0.00		+0.00	
<b>Association of Part-time Undergraduate Students</b>												
Society		10.00		10.00		10.00		10.00		10.00		10.00
Ontario Public Interest Research Group (refundable)		1.00		0.50		0.50		1.00		0.50		0.50
Canadian Federation of Students (CFS) & CFS-Ontario (cost of living increases permitted without referendum - approved fall 2002)		3.14		3.20		3.20				3.14		3.14
Accident & Prescription Drug Insurance Plan (refundable; increases up to 10% permitted without referendum - approved spring 1994)				24.24		24.24				22.04		22.04
Provincial Sales Tax on Accident & Prescription Drug Insurance Plan (refundable)				1.94		1.94				1.76		1.76
Dental Plan (refundable; increases up to 10% permitted without referendum - approved spring of 2005)				25.42		25.42						
Provincial Sales Tax on Dental Plan (refundable)				2.03		2.03						
<b>TOTAL</b>	<b>\$0.00</b>	<b>\$14.14</b>	<b>\$0.00</b>	<b>\$67.33</b>	<b>\$0.00</b>	<b>\$67.33</b>	<b>\$0.00</b>	<b>\$11.00</b>	<b>\$0.00</b>	<b>\$37.44</b>	<b>\$0.00</b>	<b>\$37.44</b>
Change From Previous Year		+28.5%		+79.8%		+79.8%		+0.0%		+16.5%		+16.5%
		+3.14		+29.89		+29.89		+0.00		+5.30		+5.30
<b>Cardiovascular Sciences Collaborative Program Student Association</b>												
Society - See Note 3			5.00	5.00	5.00	5.00			5.00	5.00	5.00	5.00
<b>TOTAL</b>	<b>\$0.00</b>	<b>\$0.00</b>	<b>\$5.00</b>	<b>\$5.00</b>	<b>\$5.00</b>	<b>\$5.00</b>	<b>\$0.00</b>	<b>\$0.00</b>	<b>\$5.00</b>	<b>\$5.00</b>	<b>\$5.00</b>	<b>\$5.00</b>
Change From Previous Year			+0.0%	+0.0%	+0.0%	+0.0%			(new)	(new)	(new)	(new)
			+0.00	+0.00	+0.00	+0.00						
<b>Dental Students' Society</b>												
Society (cost of living increases permitted without referendum - approved spring 1994)			15.00		15.00				15.00		15.00	
<b>TOTAL</b>	<b>\$0.00</b>	<b>\$0.00</b>	<b>\$15.00</b>	<b>\$0.00</b>	<b>\$15.00</b>	<b>\$0.00</b>	<b>\$0.00</b>	<b>\$0.00</b>	<b>\$15.00</b>	<b>\$0.00</b>	<b>\$15.00</b>	<b>\$0.00</b>
Change From Previous Year			+0.0%		+0.0%				+0.0%		+0.0%	
			+0.00		+0.00				+0.00		+0.00	
<b>Engineering Society</b>												
Society (cost of living increases permitted without referendum - approved spring 1991)			20.84		20.84				20.46		20.46	
Engineering Employment Office (through 2006-07; referendum required for continuation)			12.50		12.50				10.00		10.00	
Engineering Athletic Association			4.50		4.50				4.50		4.50	
Formula SAE Racing Team (through 2006-07; referendum required for continuation)			1.50		1.50				1.00		1.00	
Blue Sky Solar Car Team (through 2005-06 referendum required for continuation)			2.38		2.38				2.38		2.38	
Special Projects Levy (through 2005-06 referendum required for continuation)			50.00		50.00				50.00		50.00	
Atrium Renovation Project (through 2006-07; referendum required for continuation)			12.50		12.50							
<b>TOTAL</b>	<b>\$0.00</b>	<b>\$0.00</b>	<b>\$104.22</b>	<b>\$0.00</b>	<b>\$104.22</b>	<b>\$0.00</b>	<b>\$0.00</b>	<b>\$0.00</b>	<b>\$88.34</b>	<b>\$0.00</b>	<b>\$88.34</b>	<b>\$0.00</b>
Change From Previous Year			+18.0%		+18.0%				+0.7%		+0.7%	
			+15.88		+15.88				+0.60		+0.60	
<b>Erindale College Student Union</b>												
Society	12.13		12.13		12.13		12.13		12.13		12.13	
Library Enhancement Fund	5.00		5.00		5.00		5.00		5.00		5.00	
Student Centre Levy (reduced to \$12.50 per session beginning in Fall 2009)	26.00		26.00		26.00		26.00		26.00		26.00	
On Campus First Aid Emergency Response			0.20		0.20							
<b>TOTAL</b>	<b>\$43.13</b>	<b>\$0.00</b>	<b>\$43.33</b>	<b>\$0.00</b>	<b>\$43.33</b>	<b>\$0.00</b>	<b>\$43.13</b>	<b>\$0.00</b>	<b>\$43.13</b>	<b>\$0.00</b>	<b>\$43.13</b>	<b>\$0.00</b>
Change From Previous Year	+0.0%		+0.5%		+0.5%		+0.0%		+0.0%		+0.0%	
	+0.00		+0.20		+0.20		+0.00		+0.00		+0.00	
<b>Erindale Part-time Undergraduate Students</b>												
Society		2.00		1.00		1.00		2.00		1.00		1.00
Student Centre Levy (reduced to \$3.75 per session beginning in Fall 2009)		15.60		7.80		7.80		15.60		7.80		7.80
<b>TOTAL</b>	<b>\$0.00</b>	<b>\$17.60</b>	<b>\$0.00</b>	<b>\$8.80</b>	<b>\$0.00</b>	<b>\$8.80</b>	<b>\$0.00</b>	<b>\$17.60</b>	<b>\$0.00</b>	<b>\$8.80</b>	<b>\$0.00</b>	<b>\$8.80</b>
Change From Previous Year		+0.0%		+0.0%		+0.0%		+0.0%		+0.0%		+0.0%
		+0.00		+0.00		+0.00		+0.00		+0.00		+0.00
<b>Graduate Business Council</b>												
Society		20.00	20.00	10.00	20.00	10.00		20.00	20.00	10.00	20.00	10.00
<b>TOTAL</b>	<b>\$0.00</b>	<b>\$20.00</b>	<b>\$20.00</b>	<b>\$10.00</b>	<b>\$20.00</b>	<b>\$10.00</b>	<b>\$0.00</b>	<b>\$20.00</b>	<b>\$20.00</b>	<b>\$10.00</b>	<b>\$20.00</b>	<b>\$10.00</b>
Change From Previous Year		+0.0%	+0.0%	+0.0%	+0.0%	+0.0%		+0.0%	+0.0%	+0.0%	+0.0%	+0.0%
		+0.00	+0.00	+0.00	+0.00	+0.00		+0.00	+0.00	+0.00	+0.00	+0.00
<b>Graduate Architecture, Landscape &amp; Design Student Union (Architecture and Design Students)</b>												
Society (through 2006-07; member approval required for continuation)			42.50	25.00	42.50	25.00			42.50	25.00	42.50	25.00
<b>TOTAL</b>	<b>\$0.00</b>	<b>\$0.00</b>	<b>\$42.50</b>	<b>\$25.00</b>	<b>\$42.50</b>	<b>\$25.00</b>	<b>\$0.00</b>	<b>\$0.00</b>	<b>\$42.50</b>	<b>\$25.00</b>	<b>\$42.50</b>	<b>\$25.00</b>
Change From Previous Year			+0.0%	+0.0%	+0.0%	+0.0%			+0.0%	+0.0%	+0.0%	+0.0%
			+0.00	+0.00	+0.00	+0.00			+0.00	+0.00	+0.00	+0.00

**Compulsory Non-Academic Incidental Fees  
Schedule of Fees**

Student Societies	Summer 2005		Fall 2005		Winter 2006		Summer 2004		Fall 2004		Winter 2005	
	Full-time	Part-time	Full-time	Part-time	Full-time	Part-time	Full-time	Part-time	Full-time	Part-time	Full-time	Part-time
<b>Graduate Architecture, Landscape &amp; Design Student Union (Landscape Architecture Students)</b>												
Society (through 2006-07; member approval required for continuation)			40.00	25.00	40.00	25.00			40.00	25.00	40.00	25.00
<b>TOTAL</b>	<b>\$0.00</b>	<b>\$0.00</b>	<b>\$40.00</b>	<b>\$25.00</b>	<b>\$40.00</b>	<b>\$25.00</b>	<b>\$0.00</b>	<b>\$0.00</b>	<b>\$40.00</b>	<b>\$25.00</b>	<b>\$40.00</b>	<b>\$25.00</b>
Change From Previous Year			+0.0%	+0.0%	+0.0%	+0.0%			+0.0%	+0.0%	+0.0%	+0.0%
			+0.00	+0.00	+0.00	+0.00			+0.00	+0.00	+0.00	+0.00
<b>Graduate Students' Union</b>												
Society (cost of living increases permitted without referendum - approved spring 1990)		27.82	28.35	14.18	28.35	14.18		27.01	27.82	13.91	27.82	13.91
Canadian Federation of Students (CFS) & CFS-Ontario (cost of living increases permitted without referendum - approved spring 1998)		6.60	6.71	3.36	6.71	3.36		6.42	6.60	3.30	6.60	3.30
Ontario Public Interest Research Group (refundable)		2.50	2.50	1.25	2.50	1.25		2.50	2.50	1.25	2.50	1.25
Downtown Legal Services (refundable)		1.50	1.50	0.75	1.50	0.75		1.00	1.50	0.75	1.50	0.75
Women's Centre (refundable)		0.50	0.50	0.25	0.50	0.25		0.50	0.50	0.25	0.50	0.25
The Peer Review (refundable; cost of living increases permitted without referendum - approved spring 2004)		2.50	2.54	2.54	2.54	2.54			2.50	2.50	2.50	2.50
Supplementary Health Coverage (refundable; increases up to health industry index permitted without referendum - current provisions approved spring 1999)			69.84		69.84				59.23		59.23	
Supplementary Health Coverage Administrative Fee (refundable)			1.50		1.50				1.50		1.50	
Provincial Sales Tax on Supplementary Health Coverage (refundable)			5.59		5.59				4.74		4.74	
<b>TOTAL</b>	<b>\$0.00</b>	<b>\$41.42</b>	<b>\$119.03</b>	<b>\$22.33</b>	<b>\$119.03</b>	<b>\$22.33</b>	<b>\$0.00</b>	<b>\$37.43</b>	<b>\$106.89</b>	<b>\$21.96</b>	<b>\$106.89</b>	<b>\$21.96</b>
Change From Previous Year		+10.7%	+11.4%	+1.7%	+11.4%	+1.7%		+2.4%	+4.3%	+17.3%	+4.3%	+17.3%
		+3.99	+12.14	+0.37	+12.14	+0.37		+0.89	+4.42	+3.24	+4.42	+3.24
<b>Information Studies Student Council/Doctoral Students Association</b>												
Technology Upgrade Fund (through 2006-07; referendum required for continuation)			50.00	25.00	50.00	25.00			50.00	25.00	50.00	25.00
<b>TOTAL</b>	<b>\$0.00</b>	<b>\$0.00</b>	<b>\$50.00</b>	<b>\$25.00</b>	<b>\$50.00</b>	<b>\$25.00</b>	<b>\$0.00</b>	<b>\$0.00</b>	<b>\$50.00</b>	<b>\$25.00</b>	<b>\$50.00</b>	<b>\$25.00</b>
Change From Previous Year			+0.0%	+0.0%	+0.0%	+0.0%			+0.0%	+0.0%	+0.0%	+0.0%
			+0.00	+0.00	+0.00	+0.00			+0.00	+0.00	+0.00	+0.00
<b>Innis College Student Society</b>												
Society (cost of living increases permitted without referendum - approved spring 2000)			18.21	18.21	18.21	18.21			18.21	18.21	18.21	18.21
Harold Innis Foundation			0.50	0.50	0.50	0.50			0.50	0.50	0.50	0.50
Refugee Student Fund			3.50	3.50	3.50	3.50			3.50	3.50	3.50	3.50
<b>TOTAL</b>	<b>\$0.00</b>	<b>\$0.00</b>	<b>\$22.21</b>	<b>\$22.21</b>	<b>\$22.21</b>	<b>\$22.21</b>	<b>\$0.00</b>	<b>\$0.00</b>	<b>\$22.21</b>	<b>\$22.21</b>	<b>\$22.21</b>	<b>\$22.21</b>
Change From Previous Year			+0.0%	+0.0%	+0.0%	+0.0%			+0.0%	+0.0%	+0.0%	+0.0%
			+0.00	+0.00	+0.00	+0.00			+0.00	+0.00	+0.00	+0.00
<b>Medical Society</b>												
Society			23.77		23.77				23.77		23.77	
Canadian Federation of Medical Students			5.50		5.50				5.50		5.50	
<b>TOTAL</b>	<b>\$0.00</b>	<b>\$0.00</b>	<b>\$29.27</b>	<b>\$0.00</b>	<b>\$29.27</b>	<b>\$0.00</b>	<b>\$0.00</b>	<b>\$0.00</b>	<b>\$29.27</b>	<b>\$0.00</b>	<b>\$29.27</b>	<b>\$0.00</b>
Change From Previous Year			+0.0%		+0.0%				+0.0%		+0.0%	
			+0.00		+0.00				+0.00		+0.00	
<b>The Medium</b>												
Society			3.63	1.21	3.63	1.21			3.63	1.21	3.63	1.21
<b>TOTAL</b>	<b>\$0.00</b>	<b>\$0.00</b>	<b>\$3.63</b>	<b>\$1.21</b>	<b>\$3.63</b>	<b>\$1.21</b>	<b>\$0.00</b>	<b>\$0.00</b>	<b>\$3.63</b>	<b>\$1.21</b>	<b>\$3.63</b>	<b>\$1.21</b>
Change From Previous Year			+0.0%	+0.0%	+0.0%	+0.0%			+0.0%	+0.0%	+0.0%	+0.0%
			+0.00	+0.00	+0.00	+0.00			+0.00	+0.00	+0.00	+0.00
<b>U of T at Mississauga Athletics Council</b>												
Society	2.77	2.77	4.30	1.39	4.30	1.39	2.77	2.77	4.30	1.39	4.30	1.39
<b>TOTAL</b>	<b>\$2.77</b>	<b>\$2.77</b>	<b>\$4.30</b>	<b>\$1.39</b>	<b>\$4.30</b>	<b>\$1.39</b>	<b>\$2.77</b>	<b>\$2.77</b>	<b>\$4.30</b>	<b>\$1.39</b>	<b>\$4.30</b>	<b>\$1.39</b>
Change From Previous Year	+0.0%	+0.0%	+0.0%	+0.0%	+0.0%	+0.0%	+0.0%	+0.0%	+0.0%	+0.0%	+0.0%	+0.0%
	+0.00	+0.00	+0.00	+0.00	+0.00	+0.00	+0.00	+0.00	+0.00	+0.00	+0.00	+0.00
<b>Music Undergraduate Society</b>												
Society			7.50		7.50				7.50		7.50	
<b>TOTAL</b>	<b>\$0.00</b>	<b>\$0.00</b>	<b>\$7.50</b>	<b>\$0.00</b>	<b>\$7.50</b>	<b>\$0.00</b>	<b>\$0.00</b>	<b>\$0.00</b>	<b>\$7.50</b>	<b>\$0.00</b>	<b>\$7.50</b>	<b>\$0.00</b>
Change From Previous Year			+0.0%		+0.0%				+0.0%		+0.0%	
			+0.00		+0.00				+0.00		+0.00	
<b>New College Student Council</b>												
Society			16.00	6.00	16.00	6.00			16.00	6.00	16.00	6.00
Admission Scholarships			1.00	1.00	1.00	1.00			1.00	1.00	1.00	1.00
Computing Facilities and Capital Fund (through 2006-07; referendum required for continuation)			10.00	5.00	10.00	5.00			10.00	5.00	10.00	5.00
<b>TOTAL</b>	<b>\$0.00</b>	<b>\$0.00</b>	<b>\$27.00</b>	<b>\$12.00</b>	<b>\$27.00</b>	<b>\$12.00</b>	<b>\$0.00</b>	<b>\$0.00</b>	<b>\$27.00</b>	<b>\$12.00</b>	<b>\$27.00</b>	<b>\$12.00</b>
Change From Previous Year			+0.0%	+0.0%	+0.0%	+0.0%			+0.0%	+0.0%	+0.0%	+0.0%
			+0.00	+0.00	+0.00	+0.00			+0.00	+0.00	+0.00	+0.00
<b>Nursing Students' Council</b>												
Society			17.00		17.00				17.00		17.00	
Canadian Nursing Students Association			2.50	1.00	2.50	1.00			2.50	1.00	2.50	1.00
<b>TOTAL</b>	<b>\$0.00</b>	<b>\$0.00</b>	<b>\$19.50</b>	<b>\$1.00</b>	<b>\$19.50</b>	<b>\$1.00</b>	<b>\$0.00</b>	<b>\$0.00</b>	<b>\$19.50</b>	<b>\$1.00</b>	<b>\$19.50</b>	<b>\$1.00</b>
Change From Previous Year			+0.0%	+0.0%	+0.0%	+0.0%			+0.0%	+0.0%	+0.0%	+0.0%
			+0.00	+0.00	+0.00	+0.00			+0.00	+0.00	+0.00	+0.00



**Compulsory Non-Academic Incidental Fees  
Schedule of Fees**

Student Societies	Summer 2005		Fall 2005		Winter 2006		Summer 2004		Fall 2004		Winter 2005	
	Full-time	Part-time	Full-time	Part-time	Full-time	Part-time	Full-time	Part-time	Full-time	Part-time	Full-time	Part-time
<b>Undergraduate Pharmacy Society</b>												
Society (cost of living increases permitted without referendum - approved spring 1991)			17.38		17.38				17.38		17.38	
Canadian Association of Pharmacy Students and Interns Graduation Events			5.50		5.50			3.87		3.87		
			7.50		7.50			7.50		7.50		
<b>TOTAL</b>	<b>\$0.00</b>	<b>\$0.00</b>	<b>\$30.38</b>	<b>\$0.00</b>	<b>\$30.38</b>	<b>\$0.00</b>	<b>\$0.00</b>	<b>\$0.00</b>	<b>\$28.75</b>	<b>\$0.00</b>	<b>\$28.75</b>	<b>\$0.00</b>
Change From Previous Year			+5.7%		+5.7%			+0.0%		+0.0%		+0.0%
			+1.63		+1.63			+0.00		+0.00		+0.00
<b>Occupational Therapy &amp; Physical Therapy Graduate Students Council</b>												
Society			5.00	5.00	5.00	5.00			5.00	5.00	5.00	5.00
<b>TOTAL</b>	<b>\$0.00</b>	<b>\$0.00</b>	<b>\$5.00</b>	<b>\$5.00</b>	<b>\$5.00</b>	<b>\$5.00</b>	<b>\$0.00</b>	<b>\$0.00</b>	<b>\$5.00</b>	<b>\$5.00</b>	<b>\$5.00</b>	<b>\$5.00</b>
Change From Previous Year			+0.0%	+0.0%	+0.0%	+0.0%			+0.0%	+0.0%	+0.0%	+0.0%
			+0.00	+0.00	+0.00	+0.00			+0.00	+0.00	+0.00	+0.00
<b>Physical Education &amp; Health Undergraduate Association</b>												
Society			17.50		17.50				17.50		17.50	
<b>TOTAL</b>	<b>\$0.00</b>	<b>\$0.00</b>	<b>\$17.50</b>	<b>\$0.00</b>	<b>\$17.50</b>	<b>\$0.00</b>	<b>\$0.00</b>	<b>\$0.00</b>	<b>\$17.50</b>	<b>\$0.00</b>	<b>\$17.50</b>	<b>\$0.00</b>
Change From Previous Year			+0.0%		+0.0%			+0.0%		+0.0%		+0.0%
			+0.00		+0.00			+0.00		+0.00		+0.00
<b>Scarborough College Athletic Association</b>												
Society			3.50		3.50				3.50		3.50	
<b>TOTAL</b>	<b>\$0.00</b>	<b>\$0.00</b>	<b>\$3.50</b>	<b>\$0.00</b>	<b>\$3.50</b>	<b>\$0.00</b>	<b>\$0.00</b>	<b>\$0.00</b>	<b>\$3.50</b>	<b>\$0.00</b>	<b>\$3.50</b>	<b>\$0.00</b>
Change From Previous Year			+0.0%		+0.0%			+0.0%		+0.0%		+0.0%
			+0.00		+0.00			+0.00		+0.00		+0.00
<b>Scarborough Campus Community Radio (CSCR)</b>												
Society			2.00		2.00				2.00		2.00	
<b>TOTAL</b>	<b>\$0.00</b>	<b>\$0.00</b>	<b>\$2.00</b>	<b>\$0.00</b>	<b>\$2.00</b>	<b>\$0.00</b>	<b>\$0.00</b>	<b>\$0.00</b>	<b>\$2.00</b>	<b>\$0.00</b>	<b>\$2.00</b>	<b>\$0.00</b>
Change From Previous Year			+0.0%		+0.0%			+0.0%		+0.0%		+0.0%
			+0.00		+0.00			+0.00		+0.00		+0.00
<b>Scarborough Campus Students' Union</b>												
Society (cost of living increases permitted without referendum – approved fall 2002)	21.68	1.18	22.09	1.20	22.09	1.20	10.28	1.16	21.68	1.18	21.68	1.18
Refugee Student Program (through 2007-08; SCSU Board approval of continuation)	0.75	0.25	0.75	0.25	0.75	0.25	0.75	0.25	0.75	0.25	0.75	0.25
Student Centre (cost of living increases permitted without referendum - approved spring 2001)	31.65	9.49	32.25	9.67	32.25	9.67	31.18	9.35	31.65	9.49	31.65	9.49
Women's Centre (refundable)	1.50		1.50		1.50				1.50		1.50	
Downtown Legal Services (refundable)	0.50		0.50		0.50				0.50		0.50	
Orientation (refundable)	0.50		0.50		0.50				0.50		0.50	
Blue Sky Solar Car Team (refundable)	0.13		0.13		0.13				0.13		0.13	
Day Care Subsidy (refundable)	0.50		0.50		0.50				0.50		0.50	
Wheelchair Accessibility Projects	1.00		1.00		1.00				1.00		1.00	
Refugee Student Fund	0.30		0.30		0.30				0.30		0.30	
Health Initiatives in Developing Countries (refundable)	0.25		0.25		0.25				0.25		0.25	
Foster Children Program	0.05		0.05		0.05				0.05		0.05	
U of T Environmental Resource Network (refundable)	0.25		0.25		0.25				0.25		0.25	
Canadian Federation of Students (CFS) & CFS-Ontario (cost of living increases permitted without referendum - approved fall 2002)	6.27		6.39		6.39							
Frontier College Students for Literacy - UTSC (refundable; fall and winter only)			0.50	0.10	0.50	0.10						
Accident & Prescription Drug Insurance Plan (refundable; increases up to 10% permitted without referendum - current provisions approved spring of 1998)			34.68		34.68				35.57		35.57	
Accident & Prescription Drug Insurance Plan Administration Fee (refundable; increases up to 10% permitted without referendum - current provisions approved spring of 1998)			3.22		3.22				3.16		3.16	
Provincial Sales Tax on Accident & Prescription Drug Insurance Plan (refundable)			2.77		2.77				2.85		2.85	
Dental Plan (refundable; increases up to 10% permitted without referendum - approved spring of 1998) – See Note 2			33.00		33.00				32.38		32.38	
Dental Plan Administration Fee (refundable; increases up to 10% permitted without referendum - current provisions approved spring of 1998)			3.22		3.22				3.16		3.16	
Provincial Sales Tax on Dental Plan (refundable)			2.64		2.64				2.59		2.59	
<b>TOTAL</b>	<b>\$65.33</b>	<b>\$10.92</b>	<b>\$146.49</b>	<b>\$11.22</b>	<b>\$146.49</b>	<b>\$11.22</b>	<b>\$42.21</b>	<b>\$10.76</b>	<b>\$138.77</b>	<b>\$10.92</b>	<b>\$138.77</b>	<b>\$10.92</b>
Change From Previous Year	+54.8%	+1.5%	+5.6%	+2.7%	+5.6%	+2.7%	+2.8%	+2.7%	+228.8%	+1.5%	+228.8%	+1.5%
	+23.12	+0.16	+7.72	+0.30	+7.72	+0.30	+1.13	+0.28	+96.56	+0.16	+96.56	+0.16
<b>Scarborough College Students' Press (<i>The Underground</i>)</b>												
Society			3.50		3.50				2.50		2.50	
<b>TOTAL</b>	<b>\$0.00</b>	<b>\$0.00</b>	<b>\$3.50</b>	<b>\$0.00</b>	<b>\$3.50</b>	<b>\$0.00</b>	<b>\$0.00</b>	<b>\$0.00</b>	<b>\$2.50</b>	<b>\$0.00</b>	<b>\$2.50</b>	<b>\$0.00</b>
Change From Previous Year			+40.0%		+40.0%				+0.0%		+0.0%	
			+1.00		+1.00				+0.00		+0.00	
<b>Student Teachers' Union</b>												
Society			25.00		25.00				25.00		25.00	
Teacher Employment Preparation Centre			5.00		5.00				5.00		5.00	
<b>TOTAL</b>	<b>\$0.00</b>	<b>\$0.00</b>	<b>\$30.00</b>	<b>\$0.00</b>	<b>\$30.00</b>	<b>\$0.00</b>	<b>\$0.00</b>	<b>\$0.00</b>	<b>\$30.00</b>	<b>\$0.00</b>	<b>\$30.00</b>	<b>\$0.00</b>
Change From Previous Year			+0.0%		+0.0%				+0.0%		+0.0%	
			+0.00		+0.00				+0.00		+0.00	

**Compulsory Non-Academic Incidental Fees  
Schedule of Fees**

Student Societies	Summer 2005		Fall 2005		Winter 2006		Summer 2004		Fall 2004		Winter 2005	
	Full-time	Part-time	Full-time	Part-time	Full-time	Part-time	Full-time	Part-time	Full-time	Part-time	Full-time	Part-time
<b>Students' Administrative Council – St. George Campus</b>												
Society (cost of living increases permitted without referendum - approved spring 1991)	11.25		11.46		11.46		10.92		11.25		11.25	
Women's Centre (refundable)	1.50		1.50		1.50		0.50		1.50		1.50	
Sexual Education & Peer Counselling Centre (refundable)	0.25		0.25		0.25		0.25		0.25		0.25	
Downtown Legal Services (refundable)	1.50		1.50		1.50		1.50		1.50		1.50	
Ontario Public Interest Research Group (refundable)	0.50		0.50		0.50		0.50		0.50		0.50	
Orientation (refundable)	0.50		0.50		0.50		0.50		0.50		0.50	
Blue Sky Solar Racing Car Team (refundable)	0.13		0.13		0.13		0.13		0.13		0.13	
Day Care Subsidy (refundable)	0.50		0.50		0.50		0.50		0.50		0.50	
Wheelchair Accessibility Projects	1.00		1.00		1.00		1.00		1.00		1.00	
Refugee Student Fund	0.30		0.30		0.30		0.30		0.30		0.30	
Health Initiatives in Developing Countries (refundable)	0.25		0.25		0.25		0.25		0.25		0.25	
Foster Children Program	0.05		0.05		0.05		0.05		0.05		0.05	
U of T Environmental Resource Network (refundable)	0.25		0.25		0.25		0.25		0.25		0.25	
BikeShare (refundable)	0.25		0.25		0.25		0.25		0.25		0.25	
Students for Barrier Free Access (refundable)	1.00		1.00		1.00		1.00		1.00		1.00	
Cinema Studies Students' Union (refundable)	0.25		0.25		0.25				0.25		0.25	
Canadian Federation of Students (CFS) & CFS-Ontario (cost of living increases permitted without referendum - approved fall 2002)	6.27		6.39		6.39							
Radical Roots (refundable)			0.15		0.15							
Accident & Prescription Drug Insurance Plan (refundable; increases up to 10% permitted without referendum - current provisions approved spring of 1998)			35.57		35.57				35.57		35.57	
Accident & Prescription Drug Insurance Plan Administration Fee (refundable; increases up to 10% permitted without referendum - current provisions approved spring of 1998)			3.16		3.16				3.16		3.16	
Provincial Sales Tax on Accident & Prescription Drug Insurance Plan (refundable)			2.85		2.85				2.85		2.85	
Dental Plan (refundable; increases up to 10% permitted without referendum - approved spring of 1998) – see note 3			32.38		32.38				32.38		32.38	
Dental Plan Administration Fee (refundable; increases up to 10% permitted without referendum - current provisions approved spring of 1998)			3.16		3.16				3.16		3.16	
Provincial Sales Tax on Dental Plan (refundable)			2.59		2.59				2.59		2.59	
<b>TOTAL</b>	<b>\$25.75</b>	<b>\$0.00</b>	<b>\$105.94</b>	<b>\$0.00</b>	<b>\$105.94</b>	<b>\$0.00</b>	<b>\$16.65</b>	<b>\$0.00</b>	<b>\$99.19</b>	<b>\$0.00</b>	<b>\$99.19</b>	<b>\$0.00</b>
Change From Previous Year	+54.7%		+6.8%		+6.8%		(new)		-15.6%		-15.6%	
	+9.10		+6.75		+6.75				-18.32		-18.32	
<b>Students' Administrative Council – Mississauga</b>												
Society (cost of living increases permitted without referendum - approved spring 1991)	11.25		11.46		11.46		10.92		11.25		11.25	
Women's Centre (refundable)	0.50		0.50		0.50		0.50		0.50		0.50	
UTM Sexual Education Centre (refundable)	1.00		1.00		1.00		1.00		1.00		1.00	
UTM Women's Centre (refundable)	1.00		1.00		1.00		1.00		1.00		1.00	
Downtown Legal Services (refundable)	0.50		0.50		0.50		0.50		0.50		0.50	
Orientation (refundable)	0.50		0.50		0.50		0.50		0.50		0.50	
Blue Sky Solar Racing Car Team (refundable)	0.13		0.13		0.13		0.13		0.13		0.13	
Day Care Subsidy (refundable)	0.50		0.50		0.50		0.50		0.50		0.50	
Wheelchair Accessibility Projects	1.00		1.00		1.00		1.00		1.00		1.00	
Refugee Student Fund	0.30		0.30		0.30		0.30		0.30		0.30	
Health Initiatives in Developing Countries (refundable)	0.25		0.25		0.25		0.25		0.25		0.25	
Foster Children Program	0.05		0.05		0.05		0.05		0.05		0.05	
U of T Environmental Resource Network (refundable)	0.25		0.25		0.25		0.25		0.25		0.25	
Canadian Federation of Students (CFS) & CFS-Ontario (cost of living increases permitted without referendum - approved fall 2002)	6.27		6.39		6.39							
Radical Roots (refundable)			0.15		0.15							
Accident & Prescription Drug Insurance Plan (refundable; increases up to 10% permitted without referendum - current provisions approved spring of 1998)			35.57		35.57				35.57		35.57	
Accident & Prescription Drug Insurance Plan Administration Fee (refundable; increases up to 10% permitted without referendum - current provisions approved spring of 1998)			3.16		3.16				3.16		3.16	
Provincial Sales Tax on Accident & Prescription Drug Insurance Plan (refundable)			2.85		2.85				2.85		2.85	
Dental Plan (refundable; increases up to 10% permitted without referendum - approved spring of 1998) – see note 3			32.38		32.38				32.38		32.38	
Dental Plan Administration Fee (refundable; increases up to 10% permitted without referendum - current provisions approved spring of 1998)			3.16		3.16				3.16		3.16	
Provincial Sales Tax on Dental Plan (refundable)			2.59		2.59				2.59		2.59	
<b>TOTAL</b>	<b>\$23.50</b>	<b>\$0.00</b>	<b>\$103.69</b>	<b>\$0.00</b>	<b>\$103.69</b>	<b>\$0.00</b>	<b>\$16.90</b>	<b>\$0.00</b>	<b>\$96.94</b>	<b>\$0.00</b>	<b>\$96.94</b>	<b>\$0.00</b>
Change From Previous Year	+39.1%		+7.0%		+7.0%		(new)		-17.7%		-17.7%	
	+6.60		+6.75		+6.75				-20.82		-20.82	

**Compulsory Non-Academic Incidental Fees  
Schedule of Fees**

Student Societies	Summer 2005		Fall 2005		Winter 2006		Summer 2004		Fall 2004		Winter 2005	
	Full-time	Part-time	Full-time	Part-time	Full-time	Part-time	Full-time	Part-time	Full-time	Part-time	Full-time	Part-time
<b>Students' Law Society (All Except First Year J.D. Students)</b>												
Society			20.00		20.00				20.00		20.00	
Public Interest Advocacy Summer Employment Program (refundable)			15.00		15.00				15.00		15.00	
<b>TOTAL</b>	<b>\$0.00</b>	<b>\$0.00</b>	<b>\$35.00</b>	<b>\$0.00</b>	<b>\$35.00</b>	<b>\$0.00</b>	<b>\$0.00</b>	<b>\$0.00</b>	<b>\$35.00</b>	<b>\$0.00</b>	<b>\$35.00</b>	<b>\$0.00</b>
Change From Previous Year			+0.0%		+0.0%				+0.0%		+0.0%	
			+0.00		+0.00				+0.00		+0.00	
<b>Students' Law Society (First Year J.D. Students)</b>												
Society			20.00		20.00				20.00		20.00	
Public Interest Advocacy Summer Employment Program (refundable)			15.00		15.00				15.00		15.00	
Orientation			25.00		25.00				25.00		25.00	
<b>TOTAL</b>	<b>\$0.00</b>	<b>\$0.00</b>	<b>\$60.00</b>	<b>\$0.00</b>	<b>\$60.00</b>	<b>\$0.00</b>	<b>\$0.00</b>	<b>\$0.00</b>	<b>\$60.00</b>	<b>\$0.00</b>	<b>\$60.00</b>	<b>\$0.00</b>
Change From Previous Year			+0.0%		+0.0%				+71.4%		+71.4%	
			+0.00		+0.00				+25.00		+25.00	
<b>Student Association of the Transitional Year Program</b>												
Society			15.00		15.00				15.00		15.00	
<b>TOTAL</b>	<b>\$0.00</b>	<b>\$0.00</b>	<b>\$15.00</b>	<b>\$0.00</b>	<b>\$15.00</b>	<b>\$0.00</b>	<b>\$0.00</b>	<b>\$0.00</b>	<b>\$15.00</b>	<b>\$0.00</b>	<b>\$15.00</b>	<b>\$0.00</b>
Change From Previous Year			+0.0%		+0.0%				+0.0%		+0.0%	
			+0.00		+0.00				+0.00		+0.00	
<b>University College Literary &amp; Athletic Society</b>												
Society			9.45	3.33	9.45	3.33			9.45	3.33	9.45	3.33
Refugee Sponsorship Program			1.88	1.88	1.88	1.88			1.88	1.88	1.88	1.88
Special Fund (Capital Fund)			0.50	0.50	0.50	0.50			0.50	0.50	0.50	0.50
<i>The Gargoyle</i>			1.50	1.50	1.50	1.50			1.50	1.50	1.50	1.50
Foster Parents Plan			0.13	0.13	0.13	0.13			0.13	0.13	0.13	0.13
U.C. Review			0.88		0.88				0.88		0.88	
Campus Safety			1.00		1.00				1.00		1.00	
Association of College Programs - University College (refundable)			0.55		0.55				0.55		0.55	
Contact U.C.			0.50		0.50				0.50		0.50	
Charity Fund			0.13		0.13				0.13		0.13	
<b>TOTAL</b>	<b>\$0.00</b>	<b>\$0.00</b>	<b>\$16.52</b>	<b>\$7.34</b>	<b>\$16.52</b>	<b>\$7.34</b>	<b>\$0.00</b>	<b>\$0.00</b>	<b>\$16.52</b>	<b>\$7.34</b>	<b>\$16.52</b>	<b>\$7.34</b>
Change From Previous Year			+0.0%	+0.0%	+0.0%	+0.0%			+0.0%	+0.0%	+0.0%	+0.0%
			+0.00	+0.00	+0.00	+0.00			+0.00	+0.00	+0.00	+0.00
<b>U of T Community Radio (CIUT-FM) - St. George</b>												
Society	2.50		2.50		2.50		2.50		2.50		2.50	
<b>TOTAL</b>	<b>\$2.50</b>	<b>\$0.00</b>	<b>\$2.50</b>	<b>\$0.00</b>	<b>\$2.50</b>	<b>\$0.00</b>	<b>\$2.50</b>	<b>\$0.00</b>	<b>\$2.50</b>	<b>\$0.00</b>	<b>\$2.50</b>	<b>\$0.00</b>
Change From Previous Year	+0.0%		+0.0%		+0.0%		(new)		+0.0%		+0.0%	
	+0.00		+0.00		+0.00				+0.00		+0.00	
<b>U of T Community Radio (CIUT-FM) - Mississauga</b>												
Society	0.50		0.50		0.50		0.50		0.50		0.50	
<b>TOTAL</b>	<b>\$0.50</b>	<b>\$0.00</b>	<b>\$0.50</b>	<b>\$0.00</b>	<b>\$0.50</b>	<b>\$0.00</b>	<b>\$0.50</b>	<b>\$0.00</b>	<b>\$0.50</b>	<b>\$0.00</b>	<b>\$0.50</b>	<b>\$0.00</b>
Change From Previous Year	+0.0%		+0.0%		+0.0%		(new)		+0.0%		+0.0%	
	+0.00		+0.00		+0.00				+0.00		+0.00	
<b>U of T Community Radio (CIUT-FM) - Scarborough</b>												
Society	0.50		0.50		0.50		0.50		0.50		0.50	
<b>TOTAL</b>	<b>\$0.50</b>	<b>\$0.00</b>	<b>\$0.50</b>	<b>\$0.00</b>	<b>\$0.50</b>	<b>\$0.00</b>	<b>\$0.50</b>	<b>\$0.00</b>	<b>\$0.50</b>	<b>\$0.00</b>	<b>\$0.50</b>	<b>\$0.00</b>
Change From Previous Year	+0.0%		+0.0%		+0.0%		(new)		+0.0%		+0.0%	
	+0.00		+0.00		+0.00				+0.00		+0.00	
<b>Varsity Publications (<i>The Varsity</i>)</b>												
Society	0.63		0.63		0.63		0.63		0.63		0.63	
<b>TOTAL</b>	<b>\$0.63</b>	<b>\$0.00</b>	<b>\$0.63</b>	<b>\$0.00</b>	<b>\$0.63</b>	<b>\$0.00</b>	<b>\$0.63</b>	<b>\$0.00</b>	<b>\$0.63</b>	<b>\$0.00</b>	<b>\$0.63</b>	<b>\$0.00</b>
Change From Previous Year	+0.0%		+0.0%		+0.0%		+0.0%		+0.0%		+0.0%	
	+0.00		+0.00		+0.00		+0.00		+0.00		+0.00	
<b>VIBE - Radio Erindale</b>												
Society	2.00		2.00		2.00		2.00		2.00		2.00	
<b>TOTAL</b>	<b>\$2.00</b>	<b>\$0.00</b>	<b>\$2.00</b>	<b>\$0.00</b>	<b>\$2.00</b>	<b>\$0.00</b>	<b>\$2.00</b>	<b>\$0.00</b>	<b>\$2.00</b>	<b>\$0.00</b>	<b>\$2.00</b>	<b>\$0.00</b>
Change From Previous Year	+0.0%		+0.0%		+0.0%		(new)		+0.0%		+0.0%	
	+0.00		+0.00		+0.00				+0.00		+0.00	

**Compulsory Non-Academic Incidental Fees  
Schedule of Fees**

Student Societies	Summer 2005		Fall 2005		Winter 2006		Summer 2004		Fall 2004		Winter 2005	
	Full-time	Part-time	Full-time	Part-time	Full-time	Part-time	Full-time	Part-time	Full-time	Part-time	Full-time	Part-time
<b>Woodsworth College Students' Association</b>												
Society	15.00	15.00	7.50	7.50	7.50	7.50	15.00	15.00	7.50	7.50	7.50	7.50
Building Fund (through 2004-05; no provision for continuation)							35.00	35.00	17.50	17.50	17.50	17.50
<b>TOTAL</b>	<b>\$15.00</b>	<b>\$15.00</b>	<b>\$7.50</b>	<b>\$7.50</b>	<b>\$7.50</b>	<b>\$7.50</b>	<b>\$50.00</b>	<b>\$50.00</b>	<b>\$25.00</b>	<b>\$25.00</b>	<b>\$25.00</b>	<b>\$25.00</b>
Change From Previous Year	-70.0%	-70.0%	-70.0%	-70.0%	-70.0%	-70.0%	+0.0%	+0.0%	+0.0%	+0.0%	+0.0%	+0.0%
	-35.00	-35.00	-17.50	-17.50	-17.50	-17.50	+0.00	+0.00	+0.00	+0.00	+0.00	+0.00

Residence Councils	Summer 2004		Fall 2004		Winter 2005		Summer 2004		Fall 2004		Winter 2005	
	Full-time	Part-time	Full-time	Part-time	Full-time	Part-time	Full-time	Part-time	Full-time	Part-time	Full-time	Part-time
<b>89 Chestnut Residence Council</b>												
Society (cost of living increases permitted without referendum - approved spring 2004)				9.17		9.17				9.00		9.00
<b>TOTAL</b>		<b>\$0.00</b>		<b>\$9.17</b>		<b>\$9.17</b>		<b>\$0.00</b>		<b>\$9.00</b>		<b>\$9.00</b>
Change From Previous Year				+1.9%		+1.9%				(new)		(new)
				+0.17		+0.17						
<b>Innis Residence Council</b>												
Society				20.00		20.00				20.00		20.00
<b>TOTAL</b>		<b>\$0.00</b>		<b>\$20.00</b>		<b>\$20.00</b>		<b>\$0.00</b>		<b>\$20.00</b>		<b>\$20.00</b>
Change From Previous Year				+0.0%		+0.0%				+0.0%		+0.0%
				+0.00		+0.00				+0.00		+0.00
<b>Graduate House Council</b>												
Society (annual fee is pro-rated by term of residency)		11.68		11.68		11.68		11.68		11.68		11.68
<b>TOTAL</b>		<b>\$11.68</b>		<b>\$11.68</b>		<b>\$11.68</b>		<b>\$11.68</b>		<b>\$11.68</b>		<b>\$11.68</b>
Change From Previous Year		+0.0%		+0.0%		+0.0%		+0.0%		+0.0%		+0.0%
		+0.00		+0.00		+0.00		+0.00		+0.00		+0.00
<b>U of T at Mississauga Residence Council</b>												
Society				10.00		10.00				10.00		10.00
<b>TOTAL</b>		<b>\$0.00</b>		<b>\$10.00</b>		<b>\$10.00</b>		<b>\$0.00</b>		<b>\$10.00</b>		<b>\$10.00</b>
Change From Previous Year				+0.0%		+0.0%				+0.0%		+0.0%
				+0.00		+0.00				+0.00		+0.00
<b>New College Residence Council</b>												
Society				10.00		10.00				10.00		10.00
<b>TOTAL</b>		<b>\$0.00</b>		<b>\$10.00</b>		<b>\$10.00</b>		<b>\$0.00</b>		<b>\$10.00</b>		<b>\$10.00</b>
Change From Previous Year				+0.0%		+0.0%				+0.0%		+0.0%
				+0.00		+0.00				+0.00		+0.00
<b>Scarborough College Student Village Council</b>												
Society				12.50		12.50				12.50		12.50
<b>TOTAL</b>		<b>\$0.00</b>		<b>\$12.50</b>		<b>\$12.50</b>		<b>\$0.00</b>		<b>\$12.50</b>		<b>\$12.50</b>
Change From Previous Year				+0.0%		+0.0%				+0.0%		+0.0%
				+0.00		+0.00				+0.00		+0.00
<b>University College Residence Council</b>												
Society				7.50		7.50				7.50		7.50
<b>TOTAL</b>		<b>\$0.00</b>		<b>\$7.50</b>		<b>\$7.50</b>		<b>\$0.00</b>		<b>\$7.50</b>		<b>\$7.50</b>
Change From Previous Year				+0.0%		+0.0%				+0.0%		+0.0%
				+0.00		+0.00				+0.00		+0.00
<b>Woodsworth College Residence Council</b>												
Society				10.00		10.00						
<b>TOTAL</b>		<b>\$0.00</b>		<b>\$10.00</b>		<b>\$10.00</b>						
Change From Previous Year				(new)		(new)						

**Notes:**

- 1) While SCSU is authorized by the University Affairs Board to charge \$59.28 per session (including the administration fee and PST) for the Dental Plan, SCSU has elected to charge only \$38.86 (including the administration fee and PST) per session in 2005-06.
- 2) While SAC is authorized by the University Affairs Board to charge \$59.28 per session (including the administration fee and PST) for the Dental Plan, SAC has elected to charge only \$38.13 (including the administration fee and PST) per session in 2005-06.
- 3) At present, it is not technically possible in ROSI to charge the fee for the Cardiovascular Sciences Collaborative Program Student Association. Therefore, the fee is not collected by the University.

**Compulsory Non-Academic Incidental Fees  
Schedule of Fees**

**Schedule 2: Campus Services Fees**

Campus Services Fees	Summer 2005		Fall 2005		Winter 2006		Summer 2004		Fall 2004		Winter 2005	
	Full-time	Part-time	Full-time	Part-time	Full-time	Part-time	Full-time	Part-time	Full-time	Part-time	Full-time	Part-time
<b>St. George Campus</b>												
Athletics & Recreation	99.64	19.93	99.64	19.93	99.64	19.93	97.69	19.54	97.69	19.54	97.69	19.54
Hart House	61.52	12.30	61.52	12.30	61.52	12.30	60.31	12.06	60.31	12.06	60.31	12.06
Health Service Fee	17.13	3.43	17.13	3.43	17.13	3.43	17.13	3.43	17.13	3.43	17.13	3.43
Student Services	54.39	10.88	54.39	10.88	54.39	10.88	53.32	10.66	53.32	10.66	53.32	10.66
Student Affairs	22.97	4.59	22.97	4.59	22.97	4.59	22.52	4.50	22.52	4.50	22.52	4.50
<b>TOTAL</b>	<b>\$255.65</b>	<b>\$51.13</b>	<b>\$255.65</b>	<b>\$51.13</b>	<b>\$255.65</b>	<b>\$51.13</b>	<b>\$250.97</b>	<b>\$50.19</b>	<b>\$250.97</b>	<b>\$50.19</b>	<b>\$250.97</b>	<b>\$50.19</b>
Change From Previous Year	+1.9%	+1.9%	+1.9%	+1.9%	+1.9%	+1.9%	+4.0%	+4.0%	+4.0%	+4.0%	+4.0%	+4.0%
	+4.68	+0.94	+4.68	+0.94	+4.68	+0.94	+9.63	+1.91	+9.63	+1.91	+9.63	+1.91
<b>University of Toronto at Mississauga</b>												
Centre for Physical Education	68.04	13.61	68.04	13.61	68.04	13.61	51.00	10.20	51.00	10.20	51.00	10.20
Athletics Building Levy (See Note 1)	13.66	2.73	13.66	2.73	13.66	2.73	13.26	2.65	13.26	2.65	13.26	2.65
Athletics & Recreation	12.48	2.50	12.48	2.50	12.48	2.50	12.24	2.45	12.24	2.45	12.24	2.45
Hart House	1.88	0.38	1.88	0.38	1.88	0.38	1.84	0.37	1.84	0.37	1.84	0.37
Health Service Fee	18.15	3.63	18.15	3.63	18.15	3.63	17.50	3.50	17.50	3.50	17.50	3.50
Student Services Fee	99.20	19.84	99.20	19.84	99.20	19.84	111.78	22.36	111.78	22.36	111.78	22.36
<b>TOTAL</b>	<b>\$213.41</b>	<b>\$42.69</b>	<b>\$213.41</b>	<b>\$42.69</b>	<b>\$213.41</b>	<b>\$42.69</b>	<b>\$207.62</b>	<b>\$41.53</b>	<b>\$207.62</b>	<b>\$41.53</b>	<b>\$207.62</b>	<b>\$41.53</b>
Change From Previous Year	+2.8%	+2.8%	+2.8%	+2.8%	+2.8%	+2.8%	+1.5%	+1.5%	+1.5%	+1.5%	+1.5%	+1.5%
	+5.79	+1.16	+5.79	+1.16	+5.79	+1.16	+3.02	+0.60	+3.02	+0.60	+3.02	+0.60
<b>University of Toronto at Scarborough</b>												
Athletics & Physical Education (UTSC)	83.90	16.78	83.90	16.78	83.90	16.78	81.46	16.29	81.46	16.29	81.46	16.29
Athletics & Recreation	12.48	2.50	12.48	2.50	12.48	2.50	12.24	2.45	12.24	2.45	12.24	2.45
Hart House	1.88	0.38	1.88	0.38	1.88	0.38	1.84	0.37	1.84	0.37	1.84	0.37
Health & Wellness Fee	39.14	7.83	39.14	7.83	39.14	7.83	38.00	7.60	38.00	7.60	38.00	7.60
Student Services Fee	105.61	21.12	105.61	21.12	105.61	21.12	86.59	17.32	86.59	17.32	86.59	17.32
<b>TOTAL</b>	<b>\$243.01</b>	<b>\$48.61</b>	<b>\$243.01</b>	<b>\$48.61</b>	<b>\$243.01</b>	<b>\$48.61</b>	<b>\$220.13</b>	<b>\$44.03</b>	<b>\$220.13</b>	<b>\$44.03</b>	<b>\$220.13</b>	<b>\$44.03</b>
Change From Previous Year	+10.4%	+10.4%	+10.4%	+10.4%	+10.4%	+10.4%	+2.2%	+2.2%	+2.2%	+2.2%	+2.2%	+2.2%
	+22.88	+4.58	+22.88	+4.58	+22.88	+4.58	+4.69	+0.94	+4.69	+0.94	+4.69	+0.94
<b>St. George Campus Divisional Services Fees</b>												
<b>Innis College</b>												
Innis College Student Services Fee	<b>\$7.50</b>	<b>\$2.25</b>	<b>\$7.50</b>	<b>\$2.25</b>	<b>\$7.50</b>	<b>\$2.25</b>	<b>\$7.50</b>	<b>\$2.25</b>	<b>\$7.50</b>	<b>\$2.25</b>	<b>\$7.50</b>	<b>\$2.25</b>
Change From Previous Year	+0.0%	+0.0%	+0.0%	+0.0%	+0.0%	+0.0%	+0.0%	+0.0%	+0.0%	+0.0%	+0.0%	+0.0%
	+0.00	+0.00	+0.00	+0.00	+0.00	+0.00	+0.00	+0.00	+0.00	+0.00	+0.00	+0.00

**Notes**

- 1) While the U of T at Mississauga (UTM) is authorized by the University Affairs Board to charge \$75.00 per session for full-time students for the Athletics Building Levy, UTM has elected to charge only \$13.66 per session (full-time). Full implementation of the approved fee will begin when the UTM Wellness Centre opens (anticipated in Fall 2006).

**Compulsory Non-Academic Incidental Fees  
Schedule of Fees**

**Schedule 3: Federated Colleges Student Society Fees**

Student Societies (Federated Colleges)	Summer 2005		Fall 2005		Winter 2006		Summer 2004		Fall 2004		Winter 2005	
	Full-time	Part-time	Full-time	Part-time	Full-time	Part-time	Full-time	Part-time	Full-time	Part-time	Full-time	Part-time
<b>St. Michael's College Student Union</b>												
Society	-	-	14.00	10.50	14.00	10.50	-	-	14.00	10.50	14.00	10.50
<b>TOTAL</b>	<b>\$0.00</b>	<b>\$0.00</b>	<b>\$14.00</b>	<b>\$10.50</b>	<b>\$14.00</b>	<b>\$10.50</b>	<b>\$0.00</b>	<b>\$0.00</b>	<b>\$14.00</b>	<b>\$10.50</b>	<b>\$14.00</b>	<b>\$10.50</b>
Change From Previous Year			+0.0%	+0.0%	+0.0%	+0.0%			+0.0%	+0.0%	+0.0%	+0.0%
			+0.00	+0.00	+0.00	+0.00			+0.00	+0.00	+0.00	+0.00
<b>The Mike</b>												
Society	-	-	2.60	1.50	2.60	1.50	-	-	2.60	1.50	2.60	1.50
<b>TOTAL</b>	<b>\$0.00</b>	<b>\$0.00</b>	<b>\$2.60</b>	<b>\$1.50</b>	<b>\$2.60</b>	<b>\$1.50</b>	<b>\$0.00</b>	<b>\$0.00</b>	<b>\$2.60</b>	<b>\$1.50</b>	<b>\$2.60</b>	<b>\$1.50</b>
Change From Previous Year			+0.0%	+0.0%	+0.0%	+0.0%			+0.0%	+0.0%	+0.0%	+0.0%
			+0.00	+0.00	+0.00	+0.00			+0.00	+0.00	+0.00	+0.00
<b>Trinity College Meetings</b>												
Athletic Association	-	-	3.50	3.50	3.50	3.50	-	-	3.50	3.50	3.50	3.50
Backfield Maintenance	-	-	0.75	0.75	0.75	0.75	-	-	0.75	0.75	0.75	0.75
Board of Stewards	-	-	-	-	-	-	-	-	3.50	3.50	3.50	3.50
Trinity College Meeting	-	-	6.25	6.25	6.25	6.25	-	-	2.75	2.75	2.75	2.75
Dramatic Society	-	-	2.50	2.50	2.50	2.50	-	-	1.75	1.75	1.75	1.75
Literary Institute	-	-	3.42	3.42	3.43	3.43	-	-	3.42	3.42	3.43	3.43
Non-Resident Affairs Committee	-	-	2.50	2.50	2.50	2.50	-	-	2.50	2.50	2.50	2.50
Sponsored Refugee Scholarship	-	-	3.00	3.00	3.00	3.00	-	-	3.00	3.00	3.00	3.00
Salterrae	-	-	2.75	2.75	2.75	2.75	-	-	2.75	2.75	2.75	2.75
Overseas Development Committee	-	-	2.50	2.50	2.50	2.50	-	-	2.50	2.50	2.50	2.50
Trinity Review	-	-	-	-	-	-	-	-	2.25	2.25	2.25	2.25
Yearbook	-	-	6.75	6.75	6.75	6.75	-	-	6.75	6.75	6.75	6.75
Year Fee	-	-	1.25	1.25	1.25	1.25	-	-	1.25	1.25	1.25	1.25
Heads Tuition Levy	-	-	2.00	2.00	2.00	2.00	-	-	2.00	2.00	2.00	2.00
Capital Campaign	-	-	5.00	5.00	5.00	5.00	-	-	5.00	5.00	5.00	5.00
Volunteer Society	-	-	0.50	0.50	0.50	0.50	-	-	0.50	0.50	0.50	0.50
<b>TOTAL</b>	<b>\$0.00</b>	<b>\$0.00</b>	<b>\$42.67</b>	<b>\$42.67</b>	<b>\$42.68</b>	<b>\$42.68</b>	<b>\$0.00</b>	<b>\$0.00</b>	<b>\$44.17</b>	<b>\$44.17</b>	<b>\$44.18</b>	<b>\$44.18</b>
Change From Previous Year			-3.4%	-3.4%	-3.4%	-3.4%			+0.8%	+0.8%	+0.9%	+0.9%
			-1.50	-1.50	-1.50	-1.50			+0.37	+0.37	+0.38	+0.38
<b>Victoria University Students' Administrative Council</b>												
VUSAC and Club Funding	-	-	10.12	5.66	10.13	5.66	-	-	10.13	5.66	10.13	5.66
Victoria College Athletics Society	-	-	3.00	1.66	3.00	1.67	-	-	3.00	1.67	3.00	1.67
The Strand	-	-	2.75	0.60	2.75	0.60	-	-	2.75	0.60	2.75	0.60
The Cat's Eye Pub	-	-	2.00	1.00	2.00	1.00	-	-	2.00	1.00	2.00	1.00
Yearbook	-	-	0.87	0.50	0.88	0.50	-	-	0.87	0.50	0.88	0.50
Refugee Sponsorship Program	-	-	1.75	1.75	1.75	1.75	-	-	1.00	1.00	1.00	1.00
Acta Victoriana Literary Journal	-	-	1.38	0.75	1.37	0.75	-	-	1.38	0.75	1.37	0.75
Special Projects Levy	-	-	5.00	5.00	5.00	5.00	-	-	5.00	5.00	5.00	5.00
Victoria College Drama Society	-	-	1.50	0.75	1.50	0.75	-	-	1.50	0.75	1.50	0.75
<b>TOTAL</b>	<b>\$0.00</b>	<b>\$0.00</b>	<b>\$28.37</b>	<b>\$17.67</b>	<b>\$28.38</b>	<b>\$17.68</b>	<b>\$0.00</b>	<b>\$0.00</b>	<b>\$27.63</b>	<b>\$16.93</b>	<b>\$27.63</b>	<b>\$16.93</b>
Change From Previous Year			+2.7%	+4.4%	+2.7%	+4.4%			+5.7%	+4.6%	+5.8%	+4.7%
			+0.74	+0.74	+0.75	+0.75			+1.50	+0.75	+1.51	+0.76

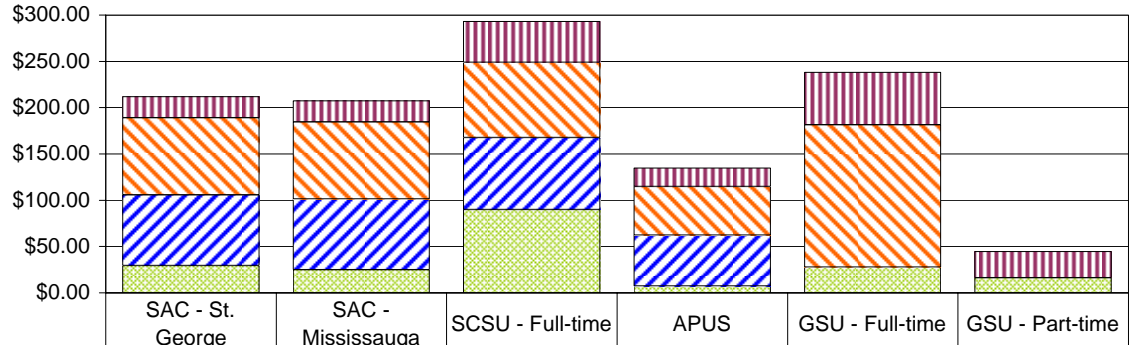
**Compulsory Non-Academic Incidental Fees  
Schedule of Fees**

**Schedule 4: Federated Colleges Services Fees**

Campus Services Fees (Federated Colleges)	Summer 2005		Fall 2005		Winter 2006		Summer 2004		Fall 2004		Winter 2005	
	Full-time	Part-time	Full-time	Part-time	Full-time	Part-time	Full-time	Part-time	Full-time	Part-time	Full-time	Part-time
<b>St. Michael's College</b>												
College Fee	-	-	97.50	48.75	97.50	48.75	-	-	97.50	48.75	97.50	48.75
Campaign Fund	-	-	15.00	15.00	15.00	15.00	-	-	15.00	15.00	15.00	15.00
<b>TOTAL</b>	<b>\$0.00</b>	<b>\$0.00</b>	<b>\$112.50</b>	<b>\$63.75</b>	<b>\$112.50</b>	<b>\$63.75</b>	<b>\$0.00</b>	<b>\$0.00</b>	<b>\$112.50</b>	<b>\$63.75</b>	<b>\$112.50</b>	<b>\$63.75</b>
Change From Previous Year			+0.0%	+0.0%	+0.0%	+0.0%			+0.0%	+0.0%	+0.0%	+0.0%
			+0.00	+0.00	+0.00	+0.00			+0.00	+0.00	+0.00	+0.00
<b>Trinity College</b>												
Trinity College Fee	-	-	128.00	64.00	128.00	64.00	-	-	125.00	62.50	125.00	62.50
<b>TOTAL</b>	<b>\$0.00</b>	<b>\$0.00</b>	<b>\$128.00</b>	<b>\$64.00</b>	<b>\$128.00</b>	<b>\$64.00</b>	<b>\$0.00</b>	<b>\$0.00</b>	<b>\$125.00</b>	<b>\$62.50</b>	<b>\$125.00</b>	<b>\$62.50</b>
Change From Previous Year			+2.4%	+2.4%	+2.4%	+2.4%			+2.0%	+2.0%	+2.0%	+2.0%
			+3.00	+1.50	+3.00	+1.50			+2.50	+1.25	+2.50	+1.25
<b>Victoria College (all students except first year students)</b>												
Student Services Fee	-	-	45.00	15.00	45.00	15.00	-	-	45.00	15.00	45.00	15.00
<b>TOTAL</b>	<b>\$0.00</b>	<b>\$0.00</b>	<b>\$45.00</b>	<b>\$15.00</b>	<b>\$45.00</b>	<b>\$15.00</b>	<b>\$0.00</b>	<b>\$0.00</b>	<b>\$45.00</b>	<b>\$15.00</b>	<b>\$45.00</b>	<b>\$15.00</b>
Change From Previous Year			+0.0%	+0.0%	+0.0%	+0.0%			+20.0%	+20.0%	+20.0%	+20.0%
			+0.00	+0.00	+0.00	+0.00			+7.50	+2.50	+7.50	+2.50
<b>Victoria College (first year students)</b>												
Orientation Fee			50.00	-	50.00	-						
Student Services Fee	-	-	45.00	15.00	45.00	15.00	-	-	45.00	15.00	45.00	15.00
<b>TOTAL</b>	<b>\$0.00</b>	<b>\$0.00</b>	<b>\$95.00</b>	<b>\$15.00</b>	<b>\$95.00</b>	<b>\$15.00</b>	<b>\$0.00</b>	<b>\$0.00</b>	<b>\$45.00</b>	<b>\$15.00</b>	<b>\$45.00</b>	<b>\$15.00</b>
Change From Previous Year			+111.1%	+0.0%	+111.1%	+0.0%			+20.0%	+20.0%	+20.0%	+20.0%
			+50.00	+0.00	+50.00	+0.00			+7.50	+2.50	+7.50	+2.50

### Compulsory Non-Academic Incidental Fees

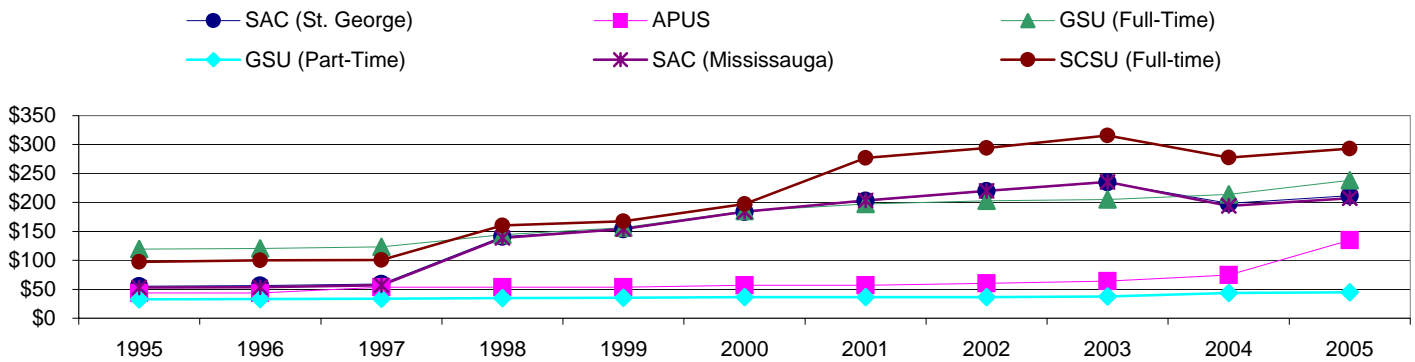
SAC, APUS, GSU and SCSU Fees (Fall + Winter)



	SAC - St. George	SAC - Mississauga	SCSU - Full-time	APUS	GSU - Full-time	GSU - Part-time
Society Portion	\$22.92	\$22.92	\$44.18	\$20.00	\$56.70	\$28.36
Health Plan	\$83.16	\$83.16	\$81.34	\$52.36	\$153.86	\$0.00
Dental Plan	\$76.26	\$76.26	\$77.72	\$54.90	\$0.00	\$0.00
Other Portions (levies, groups, etc.)	\$29.54	\$25.04	\$89.74	\$7.40	\$27.50	\$16.30

Changes in SAC, APUS, GSU and SCSU Fees (Fall + Winter)

Note: The SCSU (Full-time) amounts include the SAC (Scarborough) fee prior to Fall 2004.



Full-time Divisional Student Society Fees (Fall + Winter)

