

A photograph of a modern university campus in Mississauga, Ontario. The scene features several multi-story buildings with large glass windows and dark, vertical architectural elements. The foreground is dominated by a paved walkway that leads towards the buildings. On the left, there are young trees with sparse, brown leaves, suggesting an autumn or winter setting. The sky is clear and blue. In the distance, a person can be seen walking on the path. The overall atmosphere is bright and clear.

University of Toronto Mississauga Campus Master Plan

Campus Affairs Committee - January 10, 2022

Brook McIlroy in association with

HDR WOOD RWDI

Dougan & Associates

ERA Architects

Agenda

- Introduction
- Vision, Guiding Principles, and Design Framework
- Master Plan Concept



Vision and Guiding Principles

UTM's Campus Master Plan supports the design of sustainable, high-quality buildings and spaces that embrace natural ecological settings; that promote community health, connection, and flourishing; and that enable aspirations in research, teaching and reciprocal civic engagement.

Sustainability



1 Promote Health & Resilience



2 Embrace Ecology



3 Diversify Learning Environments

Connection



4 Strengthen Community Synergies



5 Encourage Multi-Modal Movement



6 Design Physical & Visual Connections

Vitality



7 Enable Placemaking



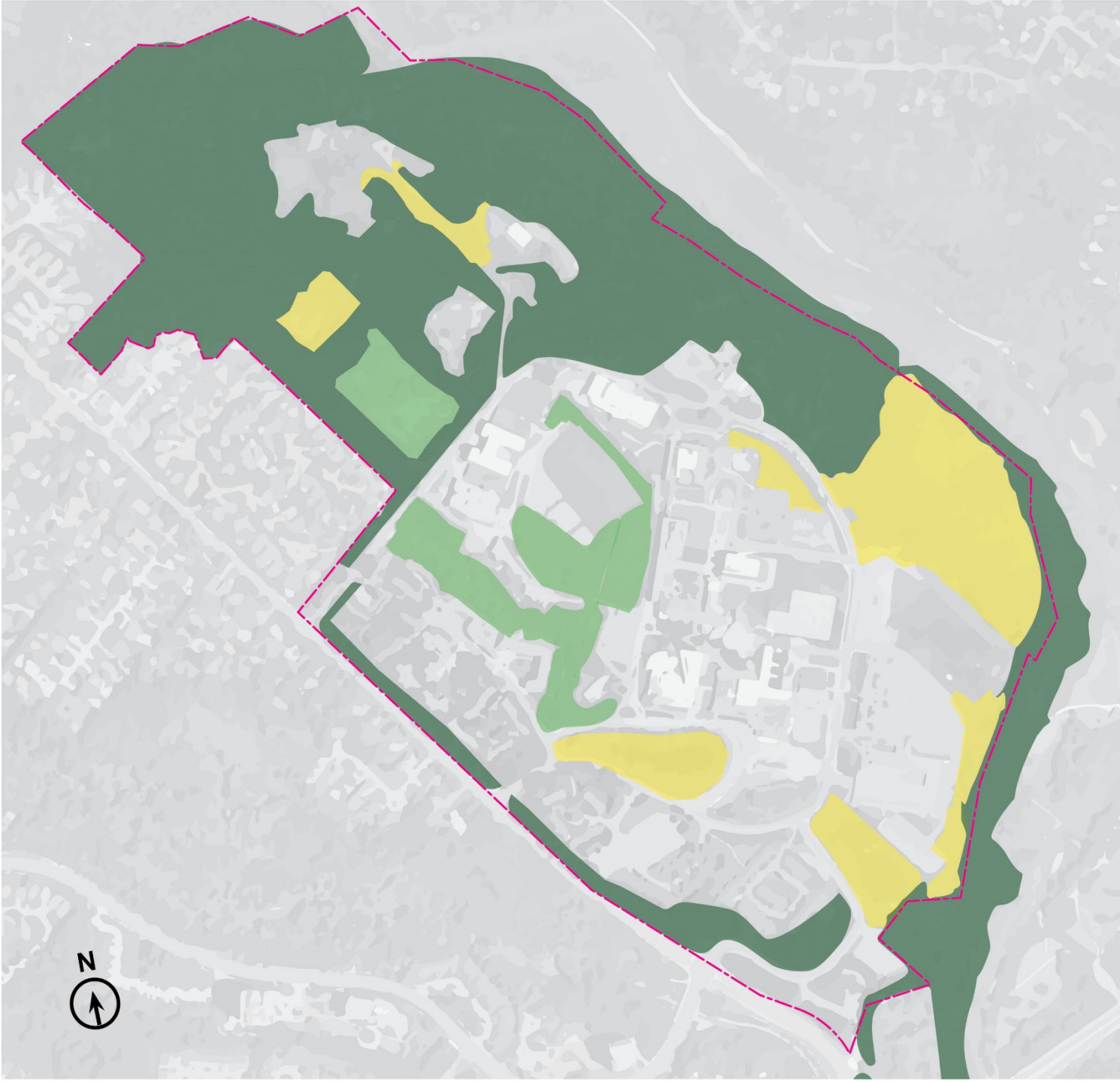
8 Empower Vibrant Experiences



9 Respect Cultural Heritage Value

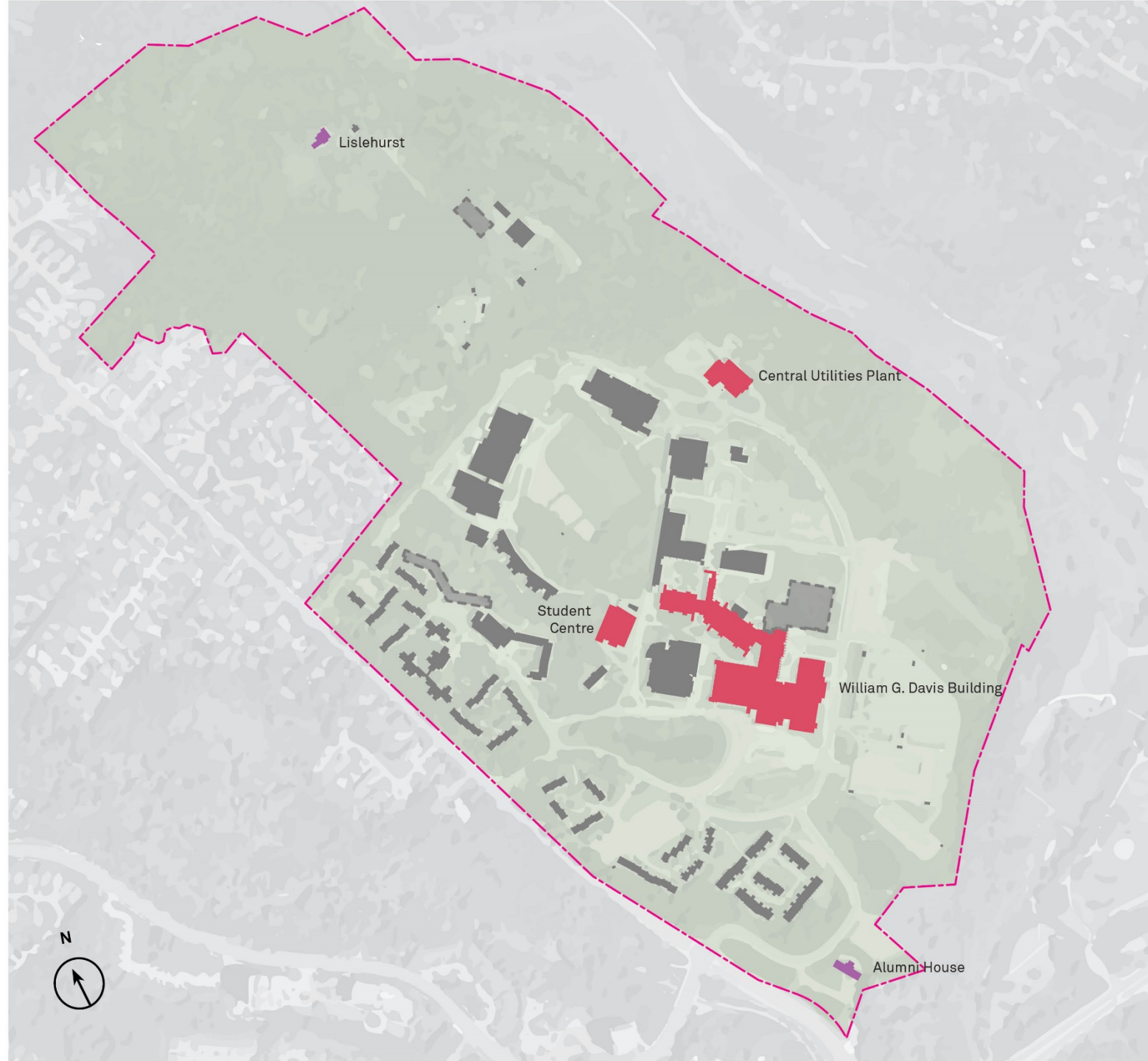
1. Campus Ecology

- High Conservation Priority Natural Heritage Features
- Natural Heritage Supporting Features
- Cultural Features
- Anthropogenic Features
- Campus Boundary



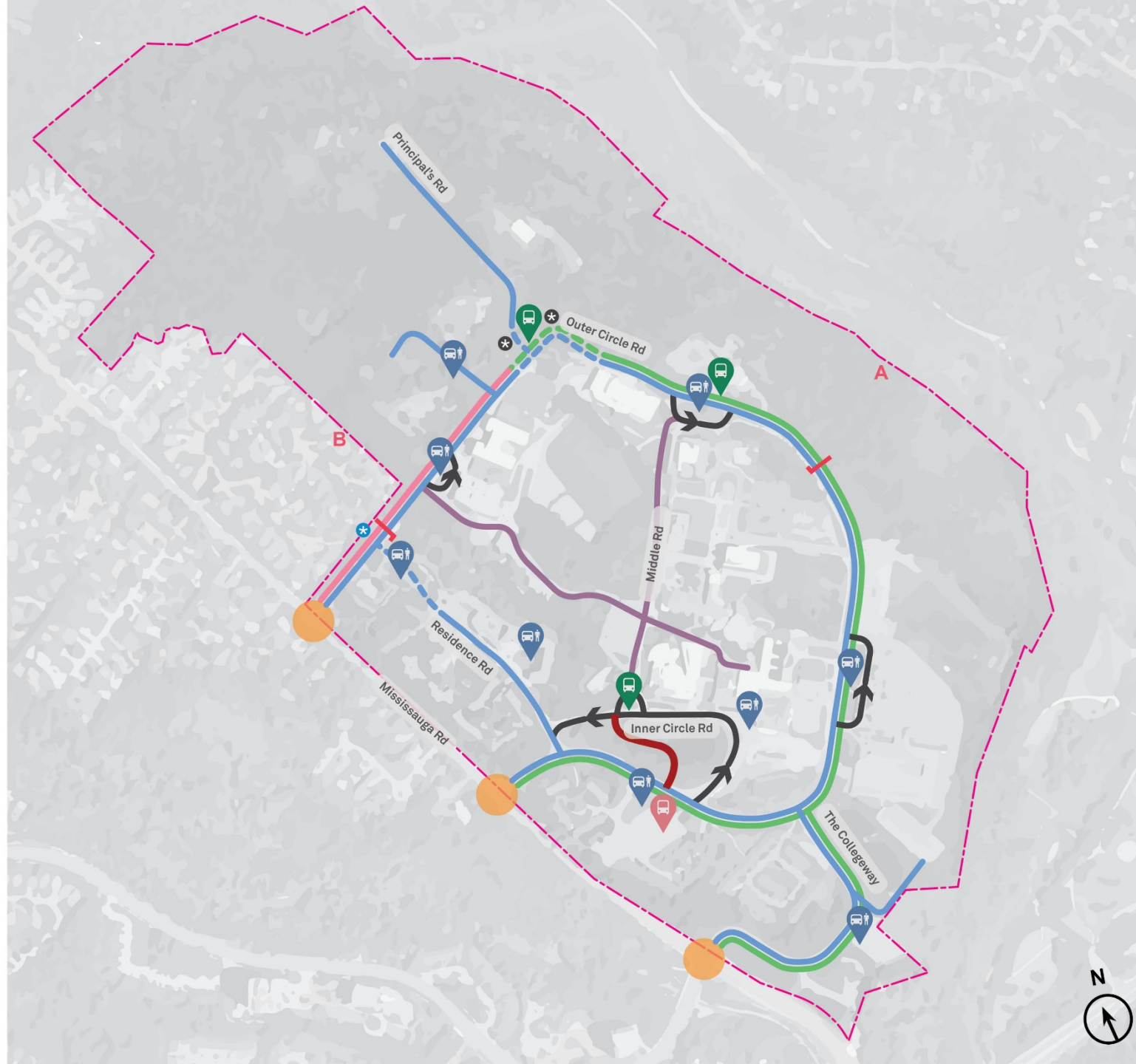
2. Cultural Heritage

- Listed Buildings
- Designated Buildings (Part IV)
- Cultural Heritage Landscape
- Campus Boundary



3. Transportation

- Vehicle Entrance
- Vehicle Two-Way
- - - Vehicle Two-Way (Potential Future Road Alignment)
- ➔ Vehicle One-Way
- Cycle Track
- - - Cycle Track (Potential Future Road Alignment)
- On-Street Bike Lanes (both sides)
- Pedestrian Street
- Pedestrian Bridge
- 🚗 Passenger Pick-up / Drop-off
- 🚏 Potential Public Transit Hub Location
- 🚍 Campus Shuttle Stop
- * Road realignments subject to environmental study
- * Road realignments subject to further study
- ┌ Street section cut locations
- - - Campus Boundary

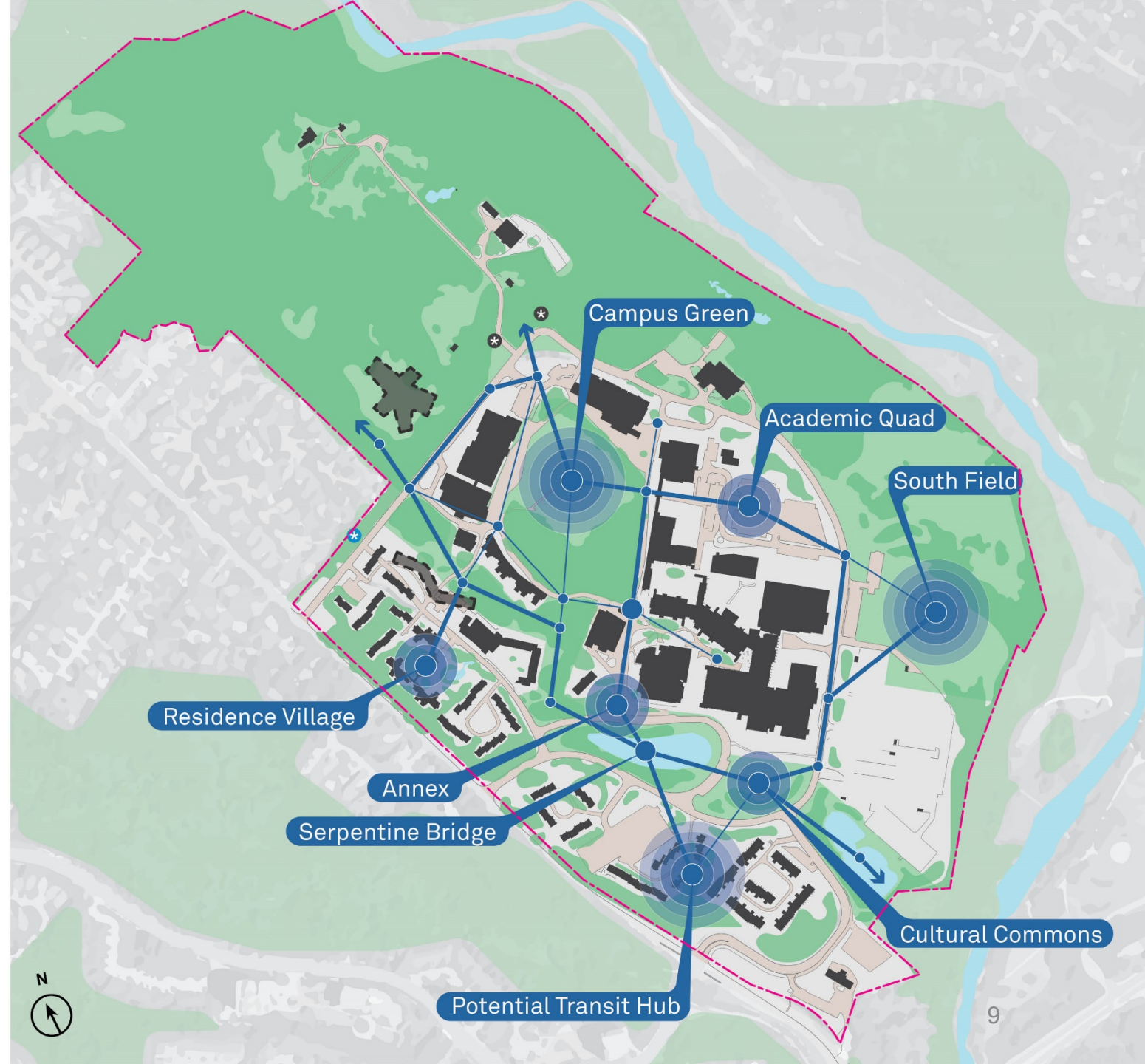


4. Open Space Framework



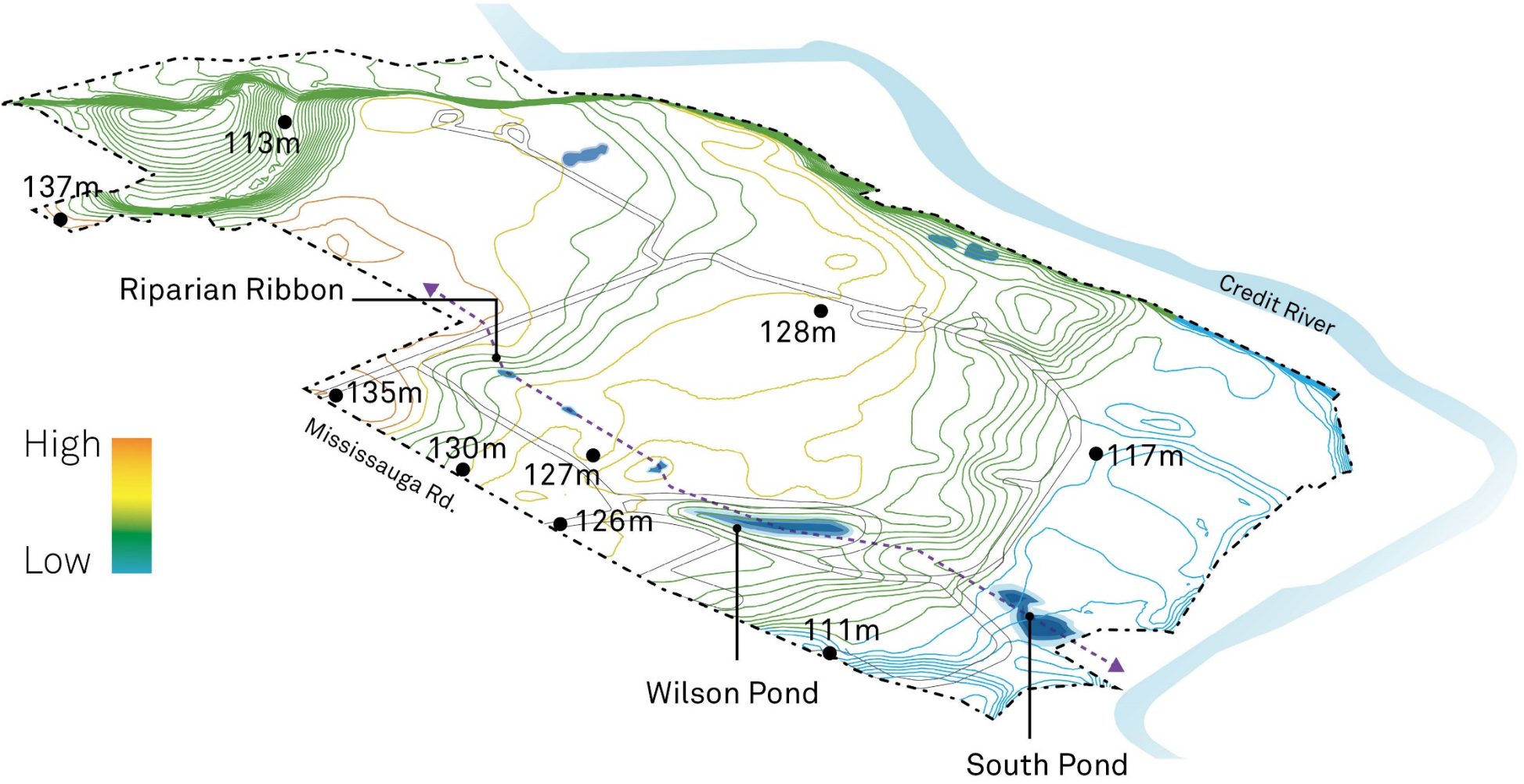
5. Urban Design Framework

- Campus Nodes
- Key Connections
- - - Campus Boundary
- * Road realignments subject to environmental study
- * Road realignments subject to further study

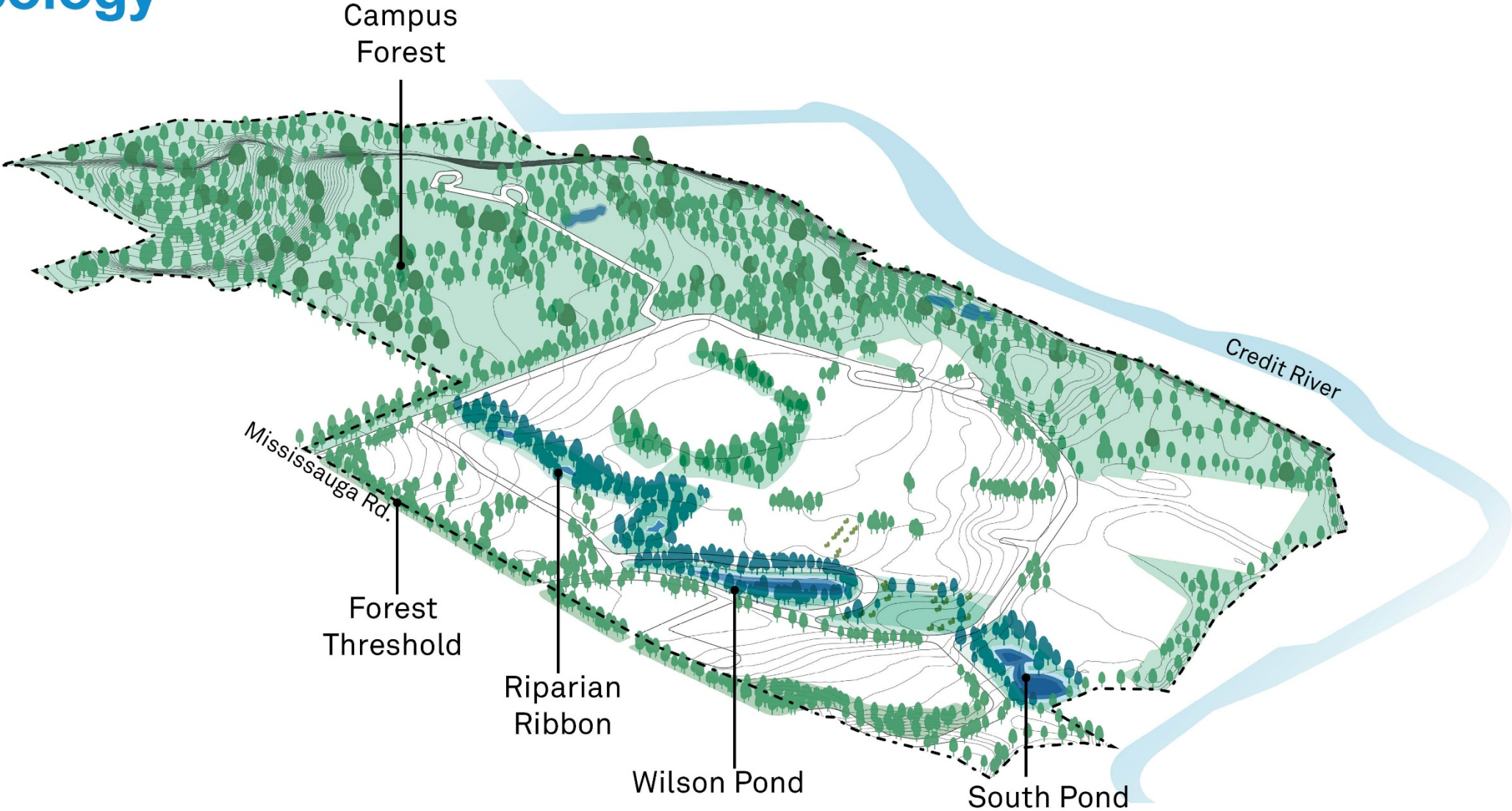


6. Systems of the Plan

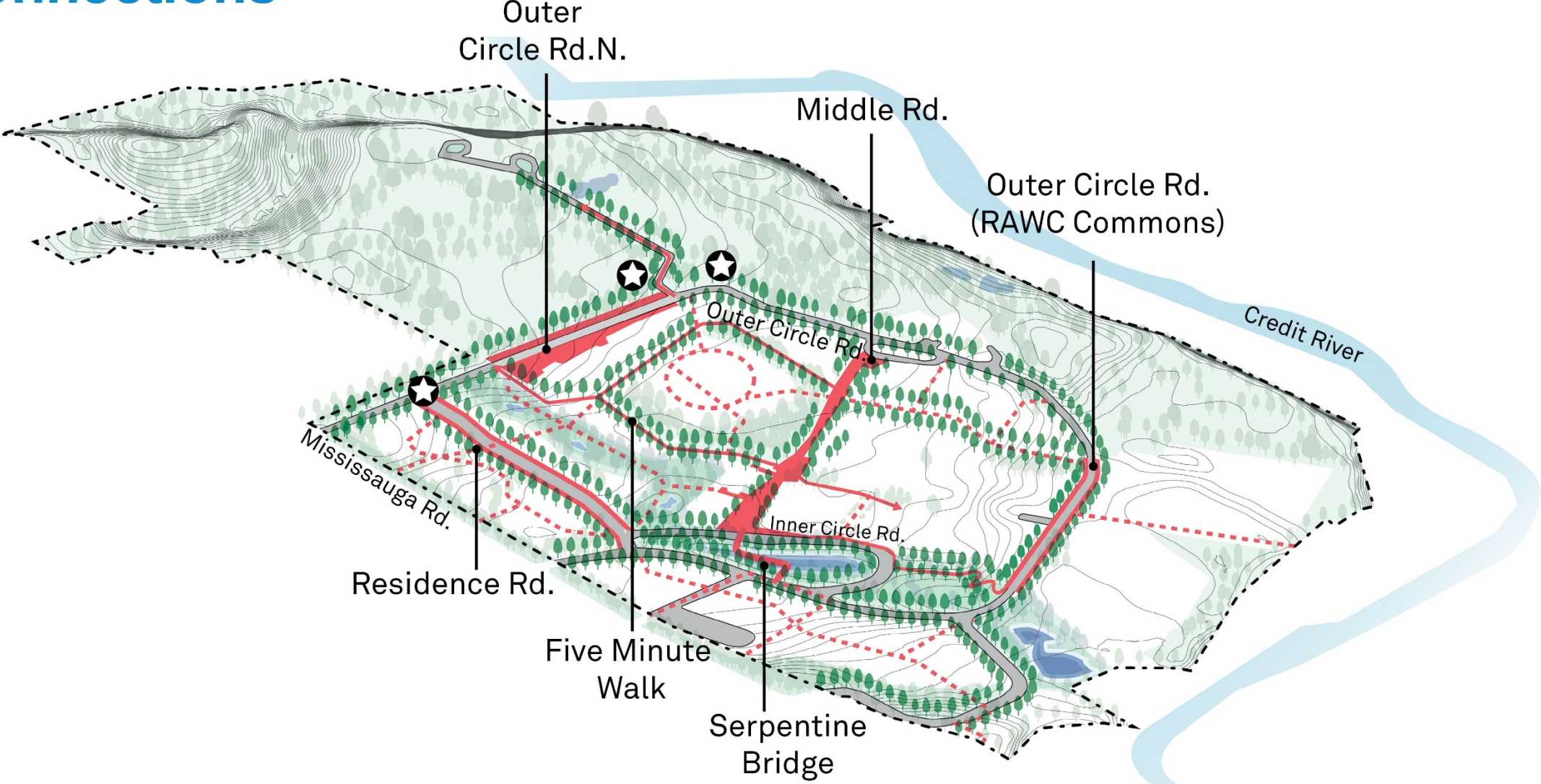
Land & Water



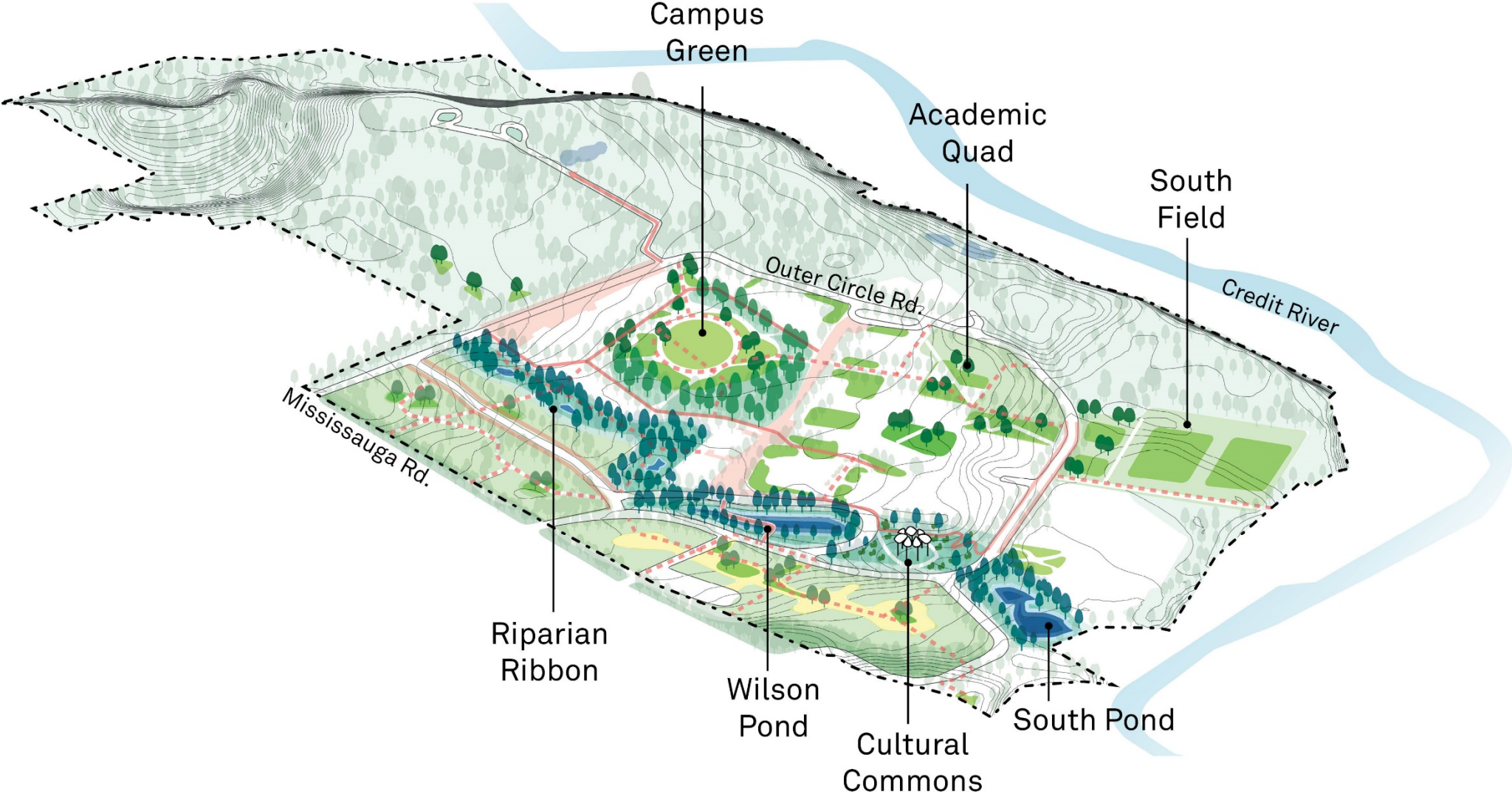
Ecology



Connections



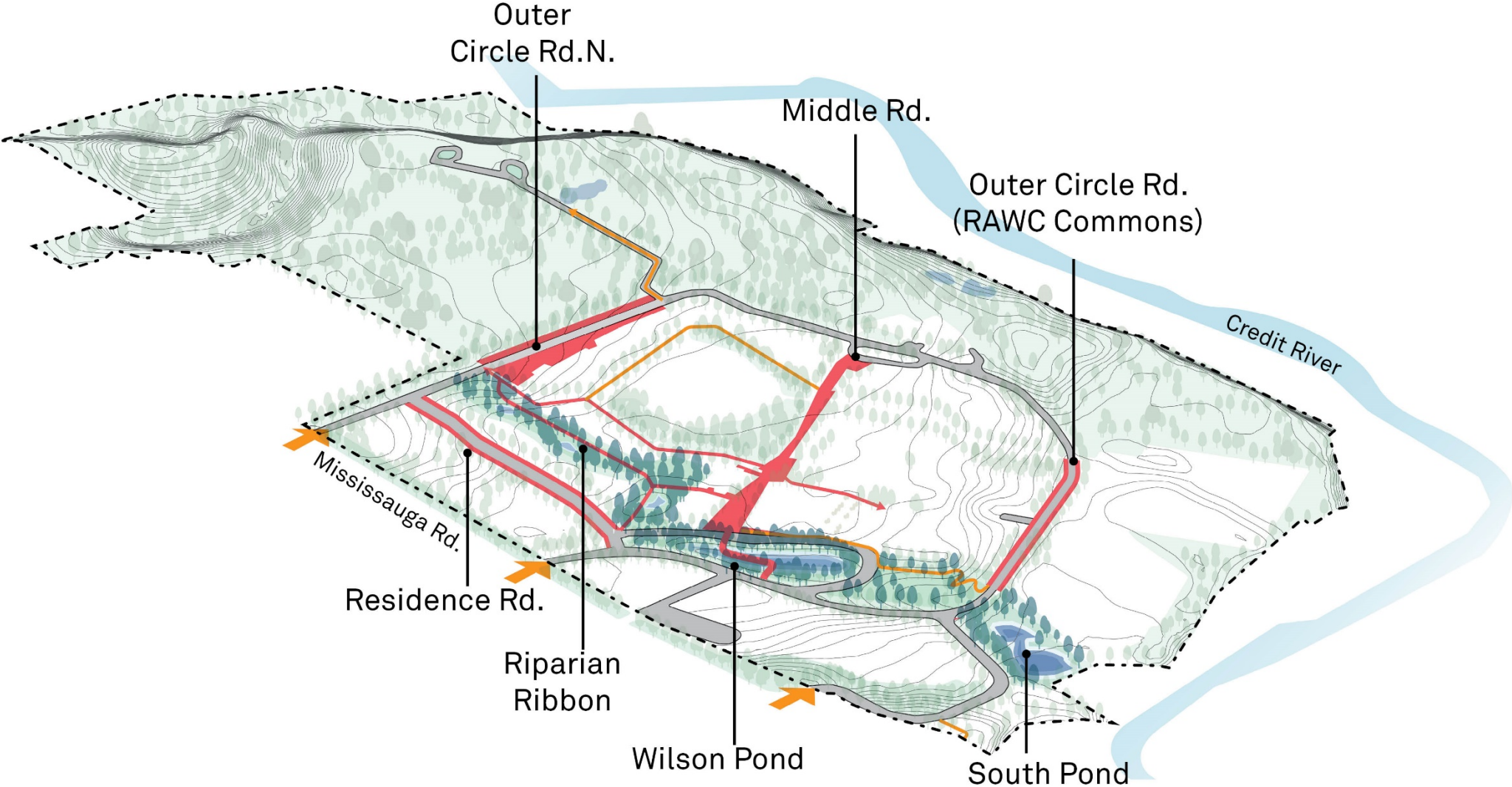
Open Spaces



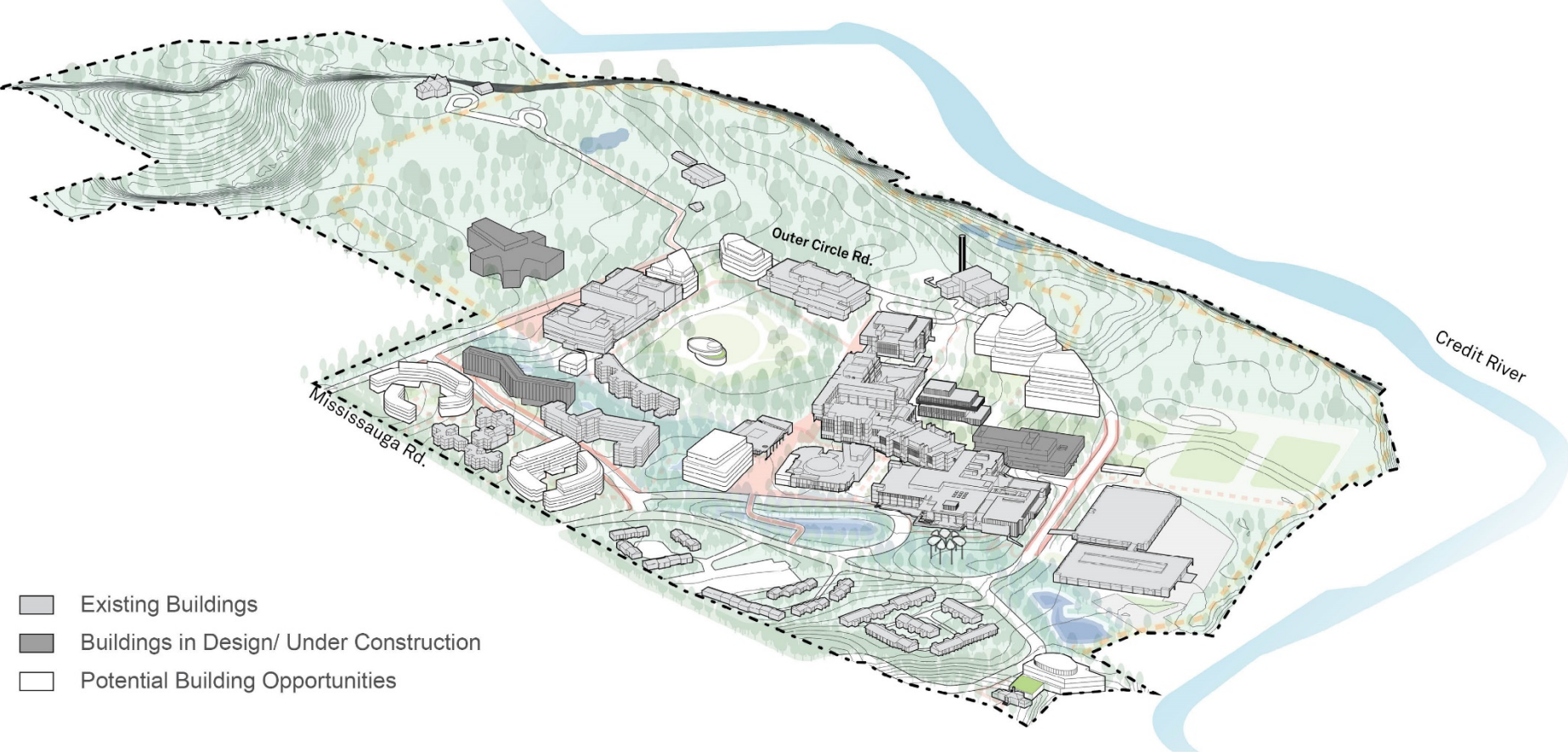
Placemaking



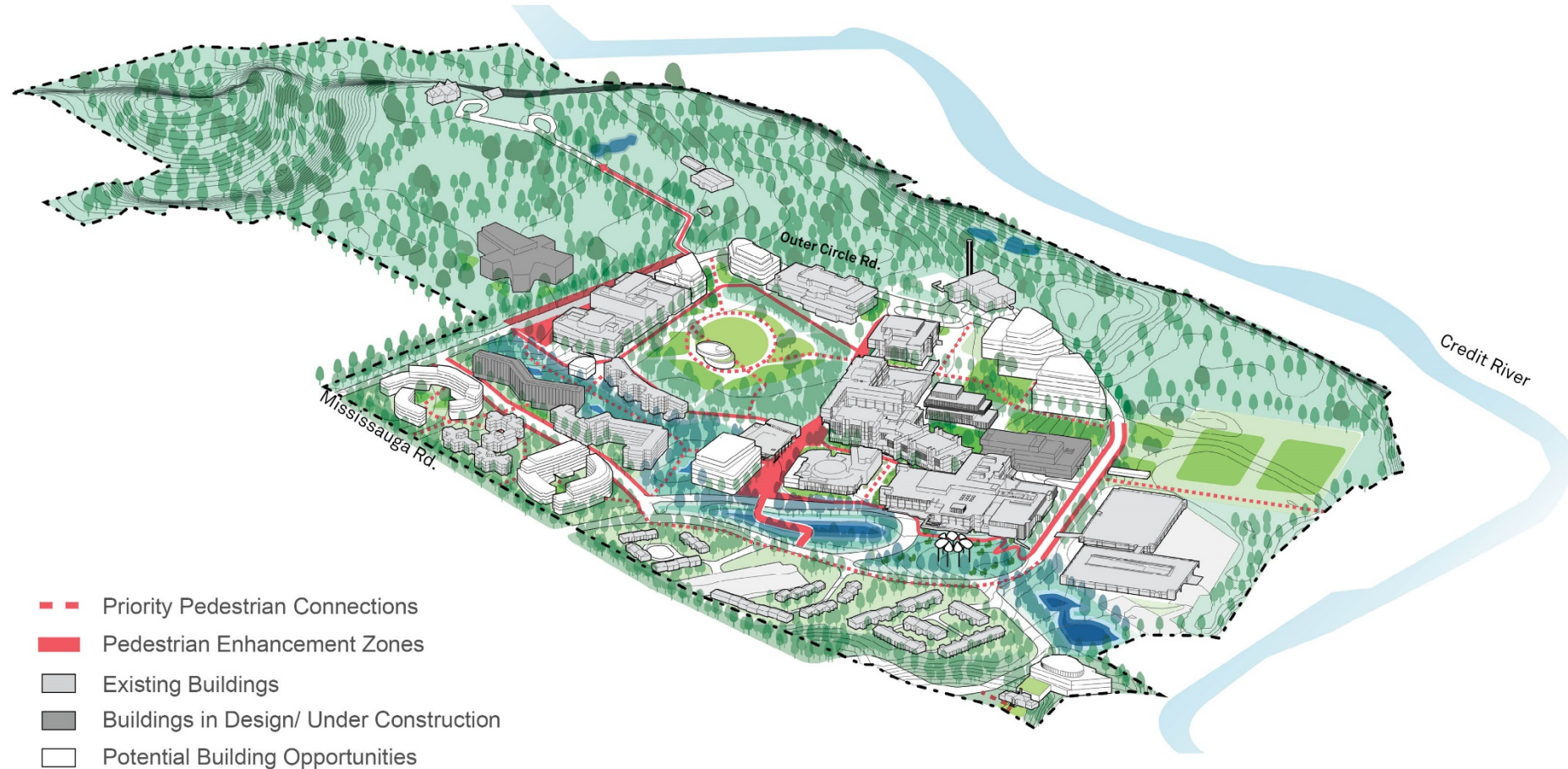
Wayfinding & Identity



Built Form Infill




Campus Systems: Campus Master Plan Horizon (2035-2036)



Campus Master Plan Concept

Campus Identification System & Development Sites Plan

-  Sites in Design/ Under Construction
-  Future Development Sites
-  Open Spaces
-  Potential Road realignments (subject to environmental study)



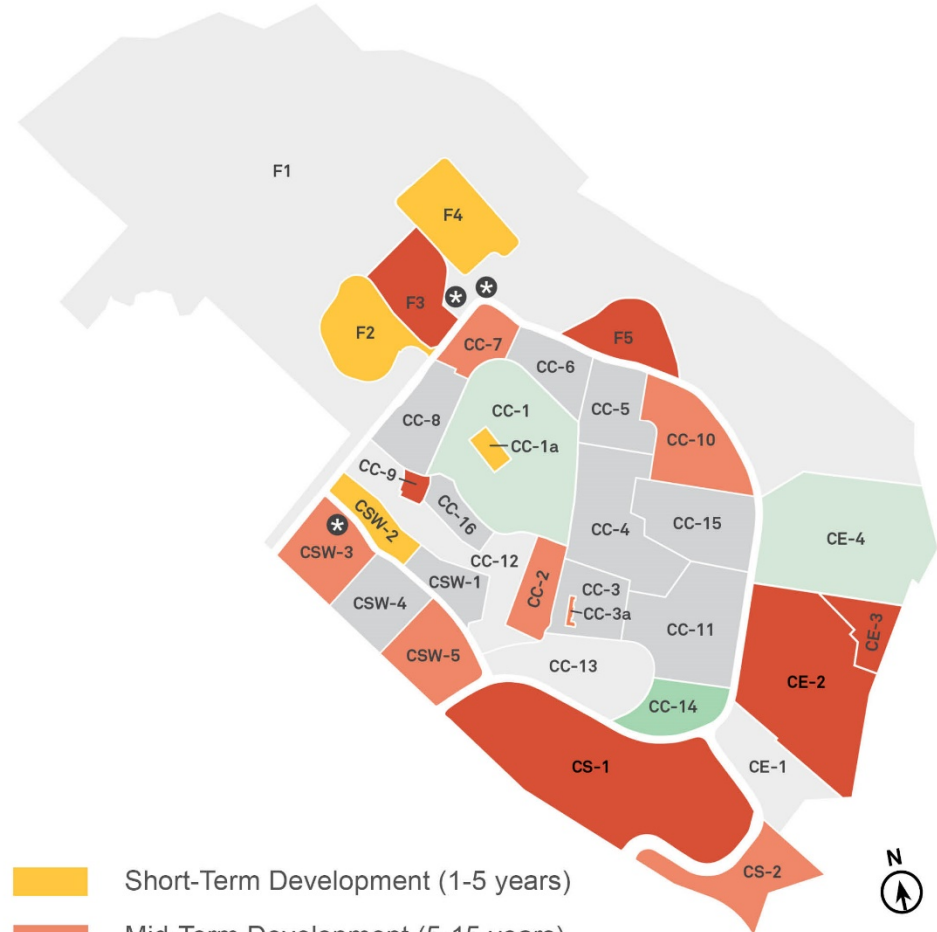
Potential Land Uses for Development Sites



Potential Land Use Map for Potential Future Development Sites

- Academic Uses
- Ancillary Uses
- * Potential Road realignments (subject to environmental study)

Priorities & Phasing



- Short-Term Development (1-5 years)
- Mid-Term Development (5-15 years)
- Long-Term Development (15+ years)
- Short-Term Open Space Development (1-5 years)
- Mid-Term Open Space Development (5-15 years)
- * Potential road realignments (subject to further study)

Key Campus Master Plan moves include:

1. Identify potential future development sites
2. Create a landmark building and plaza
3. Redevelop and extend Middle Road
4. Create a flexible outdoor campus commons (Campus Green)
5. Reinforce the Riparian Ribbon as a pedestrian connection
6. Create Academic Quad and Cultural Commons
7. Expand and consolidate athletic uses
8. Establish 'shared streets'
9. Incorporate a new cycle track and cycling infrastructure



Key Campus Master Plan moves include:

1. Identify potential future development sites
2. **Create a landmark building and plaza**
3. Redevelop and extend Middle Road
4. Create a flexible outdoor campus commons (Campus Green)
5. Reinforce the Riparian Ribbon as a pedestrian connection
6. Create Academic Quad and Cultural Commons
7. Expand and consolidate athletic uses
8. Establish 'shared streets'
9. Incorporate a new cycle track and cycling infrastructure

Site CC-2 New Arrival Building and Plaza. Concept is illustrative.



Key Campus Master Plan moves include:

1. Identify potential future development sites
2. Create a landmark building and plaza
- 3. Redevelop and extend Middle Road**
4. Create a flexible outdoor campus commons (Campus Green)
5. Reinforce the Riparian Ribbon as a pedestrian connection
6. Create Academic Quad and Cultural Commons
7. Expand and consolidate athletic uses
8. Establish 'shared streets'
9. Incorporate a new cycle track and cycling infrastructure

Middle Road Pedestrian Street. Concept is illustrative.



Key Campus Master Plan moves include:

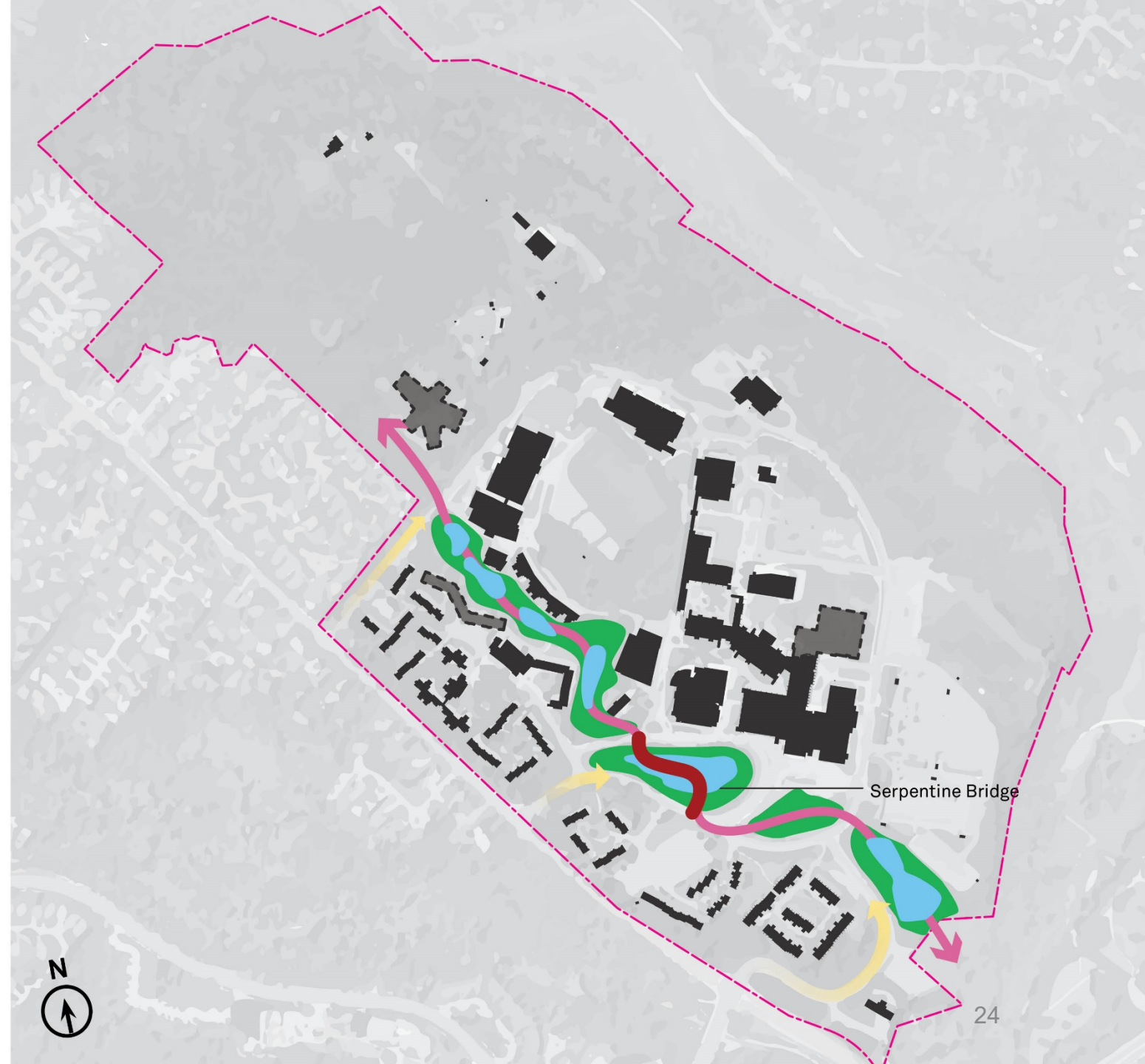
1. Identify potential future development sites
2. Create a landmark building and plaza
3. Redevelop and extend Middle Road
- 4. Create a flexible outdoor campus commons (Campus Green)**
5. Reinforce the Riparian Ribbon as a pedestrian connection
6. Create Academic Quad and Cultural Commons
7. Expand and consolidate athletic uses
8. Establish 'shared streets'
9. Incorporate a new cycle track and cycling infrastructure

Site CC-1 Campus Green & Pavilion. Concept is illustrative.



Key Campus Master Plan moves include:

1. Identify potential future development sites
2. Create a landmark building and plaza
3. Redevelop and extend Middle Road
4. Create a flexible outdoor campus commons (Campus Green)
- 5. Reinforce the Riparian Ribbon as a pedestrian connection**
6. Create Academic Quad and Cultural Commons
7. Expand and consolidate athletic uses
8. Establish 'shared streets'
9. Incorporate a new cycle track and cycling infrastructure

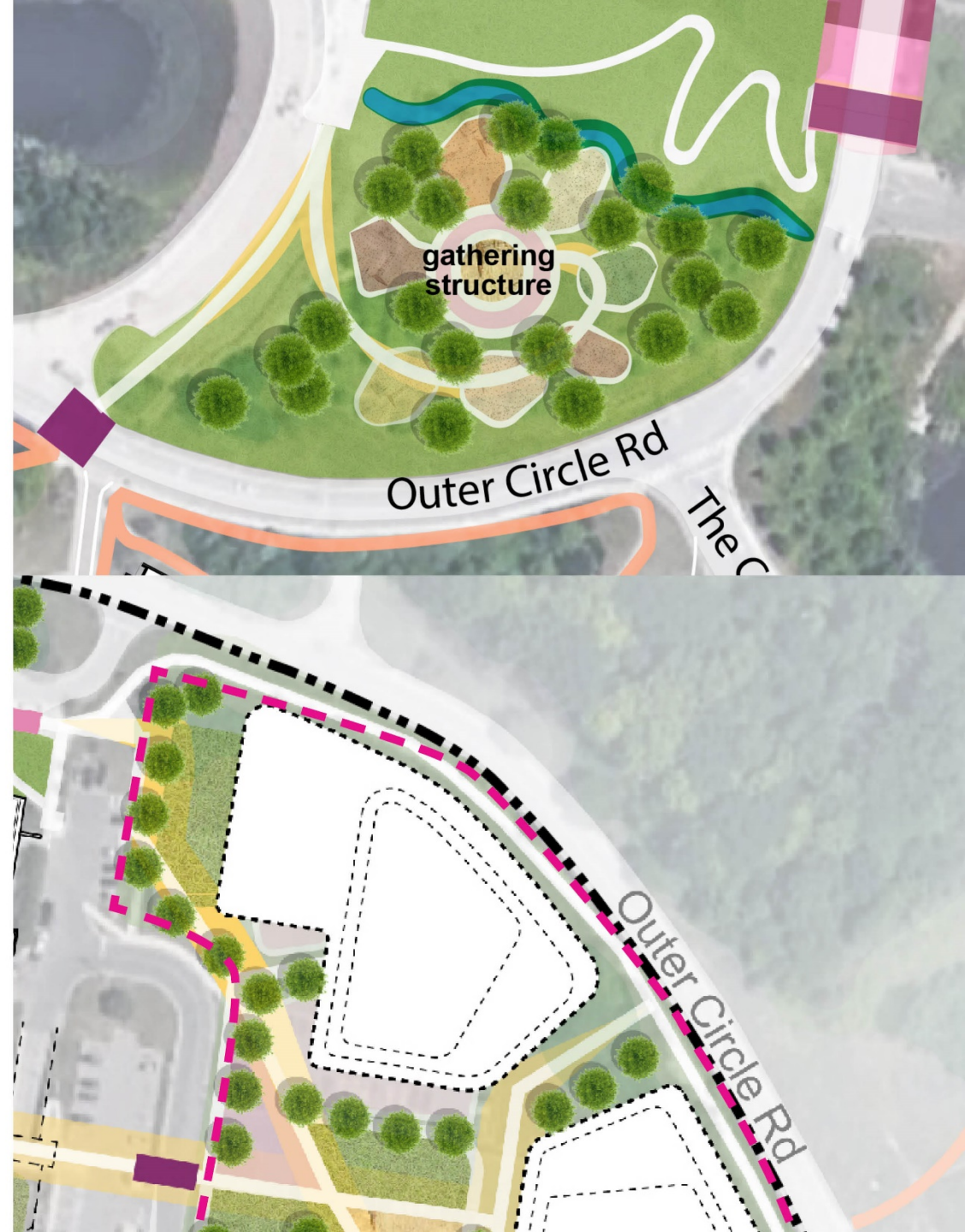


Cultural Commons open space. Concept is illustrative.

Key Campus Master Plan moves include:

1. Identify potential future development sites
2. Create a landmark building and plaza
3. Redevelop and extend Middle Road
4. Create a flexible outdoor campus commons (Campus Green)
5. Reinforce the Riparian Ribbon as a pedestrian connection
- 6. Create Academic Quad and Cultural Commons**
7. Expand and consolidate athletic uses
8. Establish 'shared streets'
9. Incorporate a new cycle track and cycling infrastructure

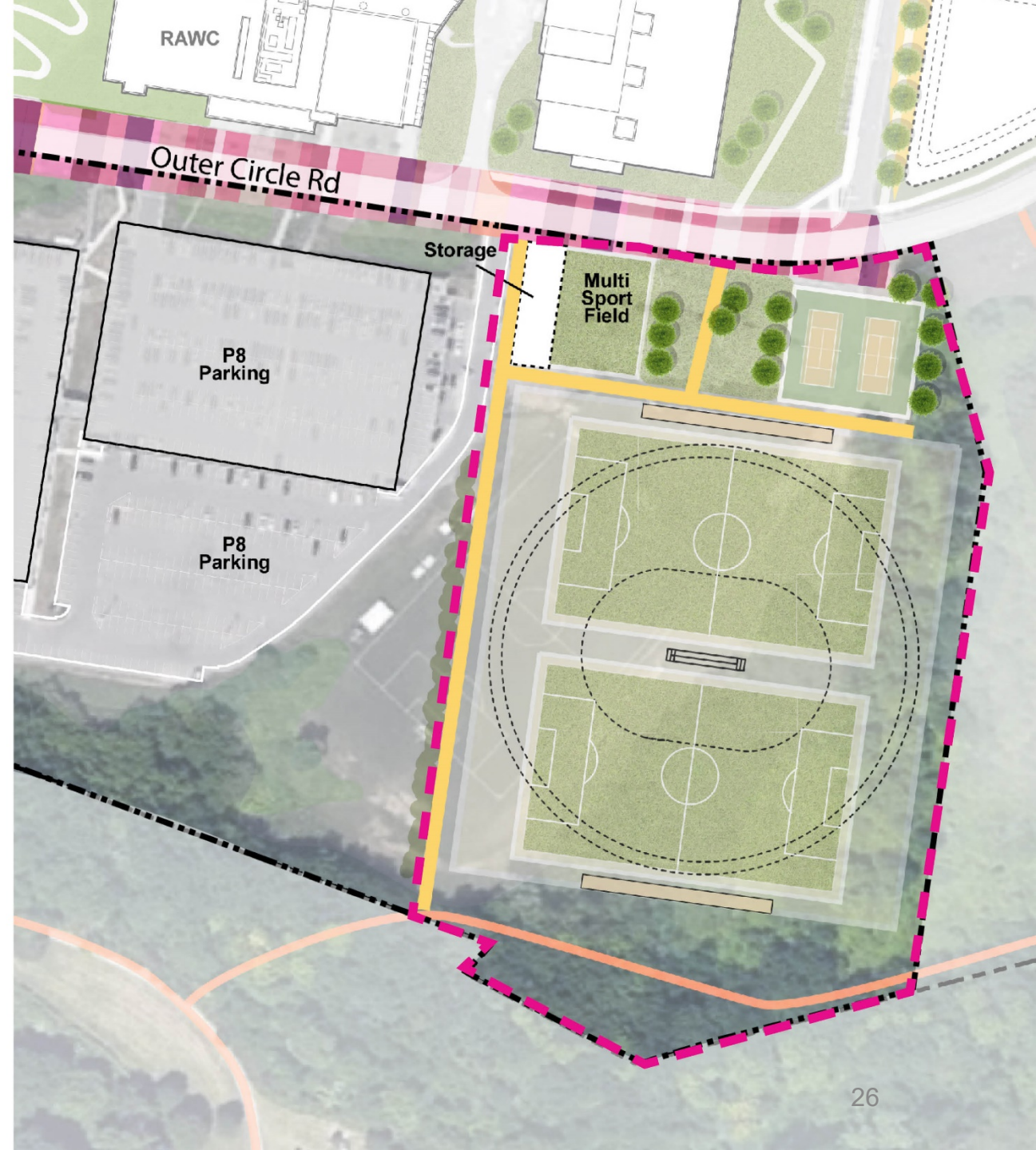
Site CC-10 Development & Academic Quad. Concept is illustrative.



Key Campus Master Plan moves include:

1. Identify potential future development sites
2. Create a landmark building and plaza
3. Redevelop and extend Middle Road
4. Create a flexible outdoor campus commons (Campus Green)
5. Reinforce the Riparian Ribbon as a pedestrian connection
6. Create Academic Quad and Cultural Commons
- 7. Expand and consolidate athletic uses**
8. Establish 'shared streets'
9. Incorporate a new cycle track and cycling infrastructure

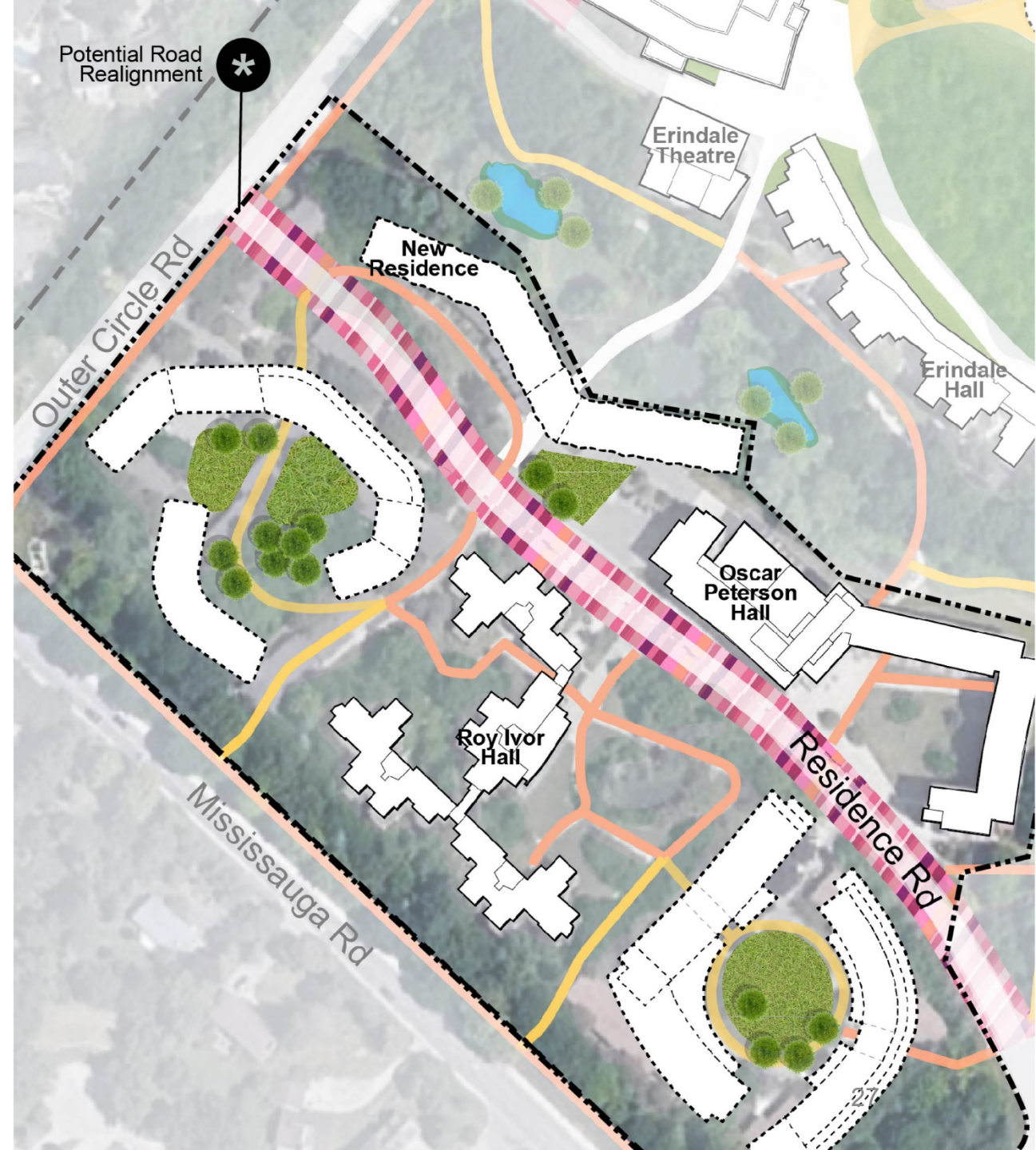
The South Field expansion. Concept is illustrative.



Key Campus Master Plan moves include:

1. Identify potential future development sites
2. Create a landmark building and plaza
3. Redevelop and extend Middle Road
4. Create a flexible outdoor campus commons (Campus Green)
5. Reinforce the Riparian Ribbon as a pedestrian connection
6. Create Academic Quad and Cultural Commons
7. Expand and consolidate athletic uses
- 8. Establish 'shared streets'**
9. Incorporate a new cycle track and cycling infrastructure

Residence Road Realignment & Shared Street. Concept is illustrative.



Key Campus Master Plan moves include:

1. Identify potential future development sites
2. Create a landmark building and plaza
3. Redevelop and extend Middle Road
4. Create a flexible outdoor campus commons (Campus Green)
5. Reinforce the Riparian Ribbon as a pedestrian connection
6. Create Academic Quad and Cultural Commons
7. Expand and consolidate athletic uses
8. Establish 'shared streets'
- 9. Incorporate a new cycle track and cycling infrastructure**

-  Cycle Track
-  Cycle Track (Potential Future Road Alignment)

