

Transforming the Instructional Landscape

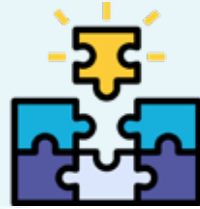
TIL Pilot Report

Academic Affairs Board

May 27th, 2021

TIMELINE

START



Innovation Hub
collaboration

COVID-19
Pandemic

How can TIL respond to the
pandemic?

2016

2017

2018

2019

2020

2021

2022

TIL initiative
launches

Partnership with
Facilities & Services
and CTSI

How does the pandemic
impact TIL?



TIL Advisory Group



PROGRESS TO DATE



Human-Centered Design



An Ongoing Conversation



Co-creating Solutions with the Community



Solutions Built with Voices of Students & Instructors in Mind

A NEW VISION FOR TIL

- Innovative and collaborative
- A supportive space
- Transdisciplinary
- A hub of expertise
- Responsive in times of change



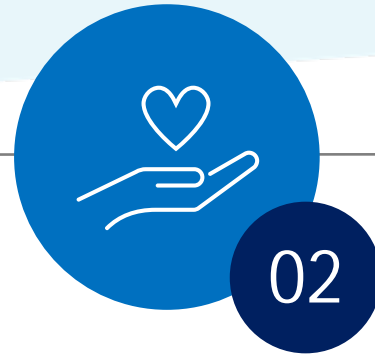
LEARNER-CENTERED DESIGN



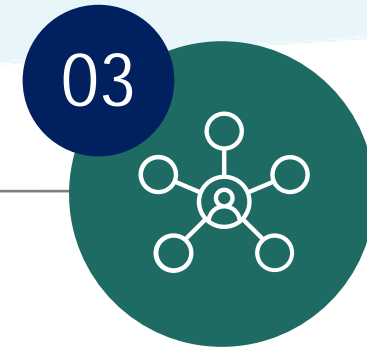
TIL PILOT: LEARNER CENTERED DESIGN



- 8 Instructors
- Teaching Assistants
- 2554 Students

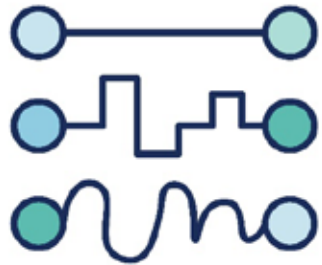


A Technical co-pilot to provide ongoing, in the moment support



- Learning Space Management team
- Innovation Hub
- Cohort of all instructors
- Other groups as necessary

KEY TAKEAWAYS



Teaching is
Personal



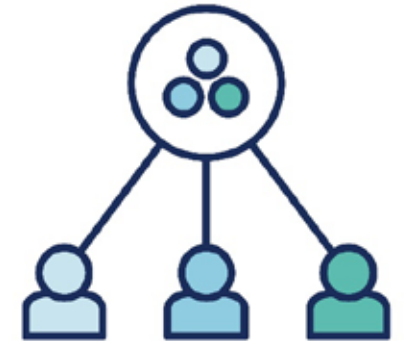
Humanizing
Support



Empowerment
Through
Experimentation



Enhancing
Student
Learning

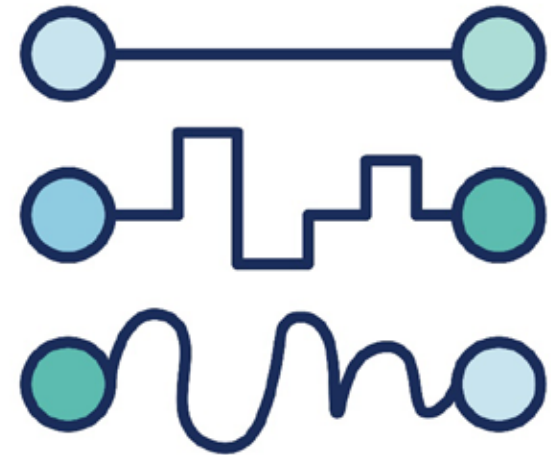


Learning and
Growing in
Community

TEACHING IS PERSONAL

- Adapting to New Teaching Environments
- Focusing on Students

"I want your technology wizardry to make this the best experience for those students as possible and I'll try to keep up with it." - Instructor



HUMANIZING SUPPORT

- Meeting Instructors Where They Are
- Playing to Strengths
- Immediate and Adaptive Support

“One of the advantages of the co-pilots in this case is they kind of they know us, they also know what we're trying to achieve. And we don't have to re explain it every time. My co-pilot knows me. And he knows I'm different than another instructor.”

- Instructor



EMPOWERMENT THROUGH EXPERIMENTATION

- Building a Container for Discomfort
- Recognizing Small Wins

"The fact that my co-pilot had [the new technology] set up and in a way that he can modify it quickly, and he's there in case something goes wrong. Of course, I'm going to use it. And of course, I'm going to try to experiment."

- Instructor



ENHANCING STUDENT LEARNING

- Technology as a Pathway to Engagement
- Understanding Student Experiences Through Analytics
- Attributions of Authenticity

"Seeing my instructor with good audio quality, the ability to ask questions... The closer the lecture feels to an in-person seminar, the more I am engaged and excited to be in an online class."
- Student

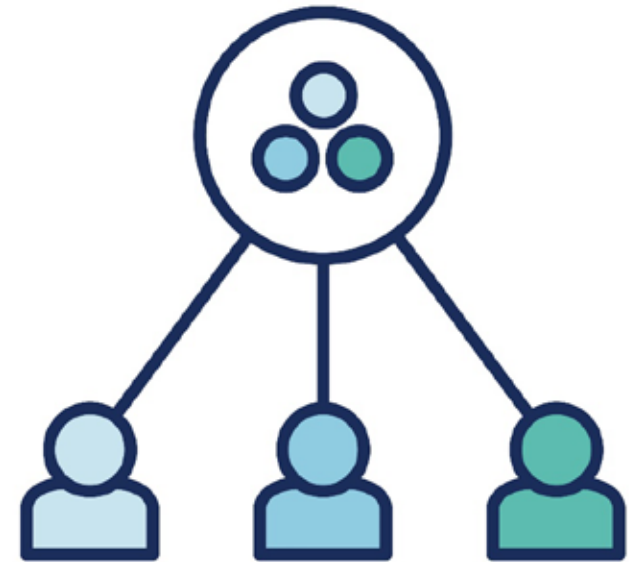


LEARNING AND GROWING IN COMMUNITY

- Learning From and With Others
- Prototyping and Learning From Failure

"It's through this shared experience, and the evolving nature of this pilot that we can test new ideas and technologies in practice before widely implementing changes."

- LSM team member



TIL PILOT: LEARNER- CENTERED DESIGN

A video sharing what the pilot does and how it's been so impactful to those involved.



You Tube Link: https://www.youtube.com/watch?v=qnP_ySpxAul

CURRENT INITIATIVES

Instructor Survey

- Over 800 instructors responded
- Short survey to gauge interest in
 - Co-pilot support – 75% interest
 - Studio space – 80% interest
 - Lecture/Content capture – 71% interest

Summer 2021 Pilot

- Supporting Summer teaching
- Exploring fall delivery

Fall Technology Working Group



THANK YOU



Steven Bailey (Director, Learning Space Management)

- Email: steven.bailey@utoronto.ca



Julia Allworth (Manager, Innovation Projects – The Innovation Hub)

- Email: julia.allworth@utoronto.ca