

A photograph of a modern university building with a mix of brick, wood, and glass facades. A paved walkway leads towards the building, with a person walking away. Bare trees with some autumn leaves are in the foreground, and a clear blue sky is above.

University of Toronto Mississauga Campus Master Plan

Campus Affairs Meeting 1- March 23, 2021

Brook McIlroy in association with

HDR WOOD RWDI

Dougan & Associates

ERA Architects

Agenda

- Project & Process
- Draft Vision
- Discussion & Next Steps

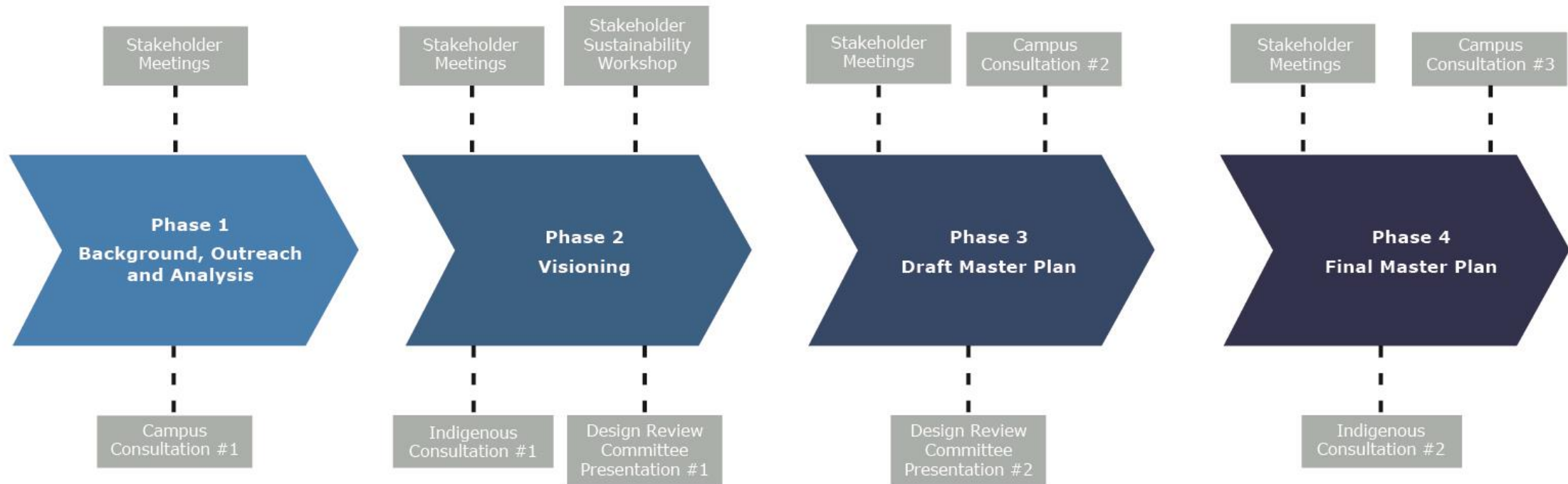
The Master Planning Project Team

The University has retained a team of consultants with expertise in:

- Urban Planning & Design
- Architecture & Landscape Architecture
- Indigenous Placemaking
- Sustainability
- Ecology
- Transportation
- Cultural Heritage
- Stormwater Management & Servicing



Campus Master Plan Process



Note: Changes to project timeline and consultation methods may occur to reflect the evolution of COVID-19.

The UTM Campus Opportunity



Design Approach to Future Development

Built Form and Campus Plan Design Guided by:

- Forest and Core Campus Connections: Forest Links to Core
- “Porous” and Light Imprint Buildings vs. Large Building Envelopes
- Building breaks to connect to campus paths
- Carefully articulated buildings to permit greater height

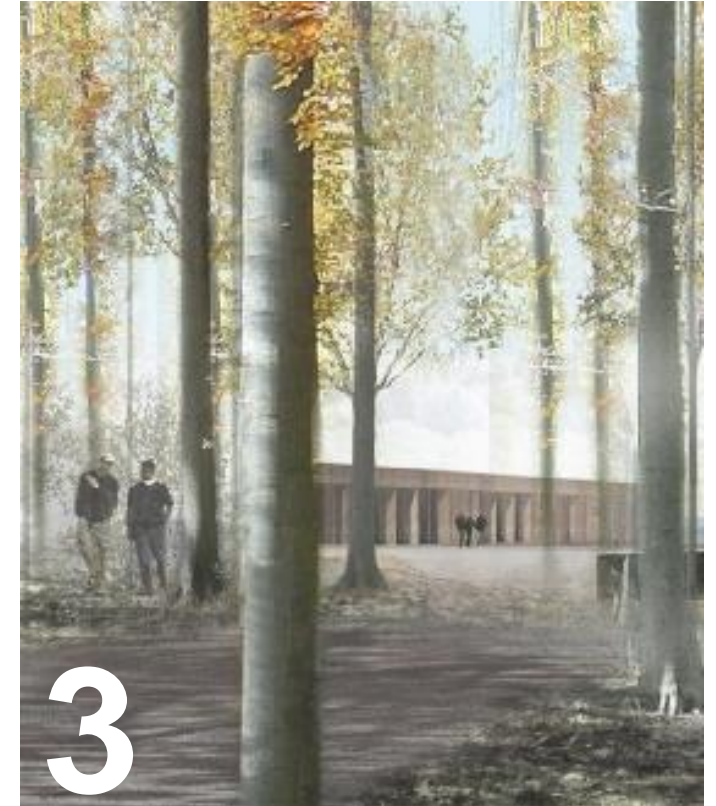
Campus Wide Guiding Principles



Create a Responsive & Adaptive Campus



Promote a Resilient Campus That Mitigates & Adapts to Climate Change

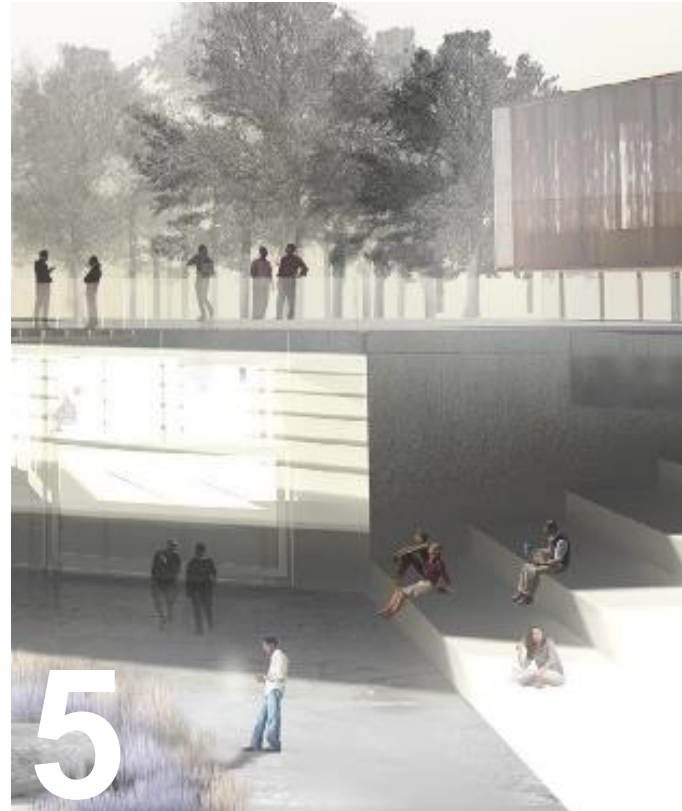


Use An Ecology-First Approach to Determine Development Opportunities & Organic Building Forms

Campus Wide Guiding Principles



Promote Appropriately Scaled Campus Development



Create a Porous Campus That Promotes Physical & Visual Connectivity



Facilitate a Multi-Modal Network That Supports a Range of Transportation Options

Campus Wide Guiding Principles



Promote A Mix of Uses That Support the University's Academic Mission



Create a Range of Learning Spaces (Indoor & Outdoor)



Promote Indigenous & Cultural Placemaking

Campus Wide Guiding Principles



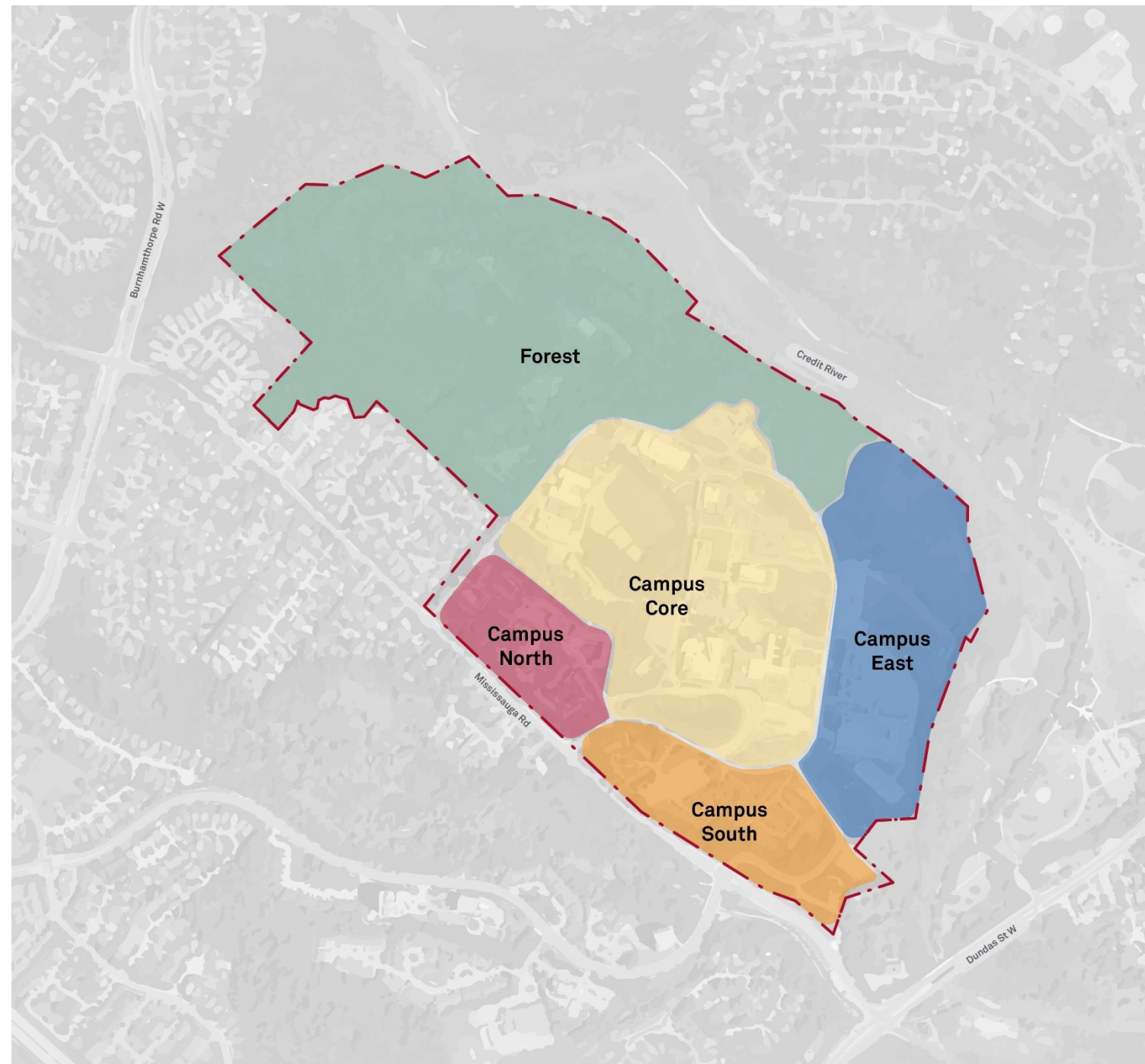
Maintain & Enhance the Campus' Cultural Heritage Value



Encourage Positive Community Relationships

Campus Precincts

1. Campus North
2. Campus South
3. Campus East
4. Campus Core
5. Forest



Environmentally Sensitive Sites

- Development at UTM should be informed by an 'ecology-first' approach
- All development should demonstrate a net gain in ecological function
- Manmade/ existing developed lands should be prioritized for development
- Appropriate transitions, buffers, views to adjacent sensitive environmental lands should occur

■ High Conservation Priority Natural Heritage Features

■ Natural Heritage Supporting Features

■ Cultural Features

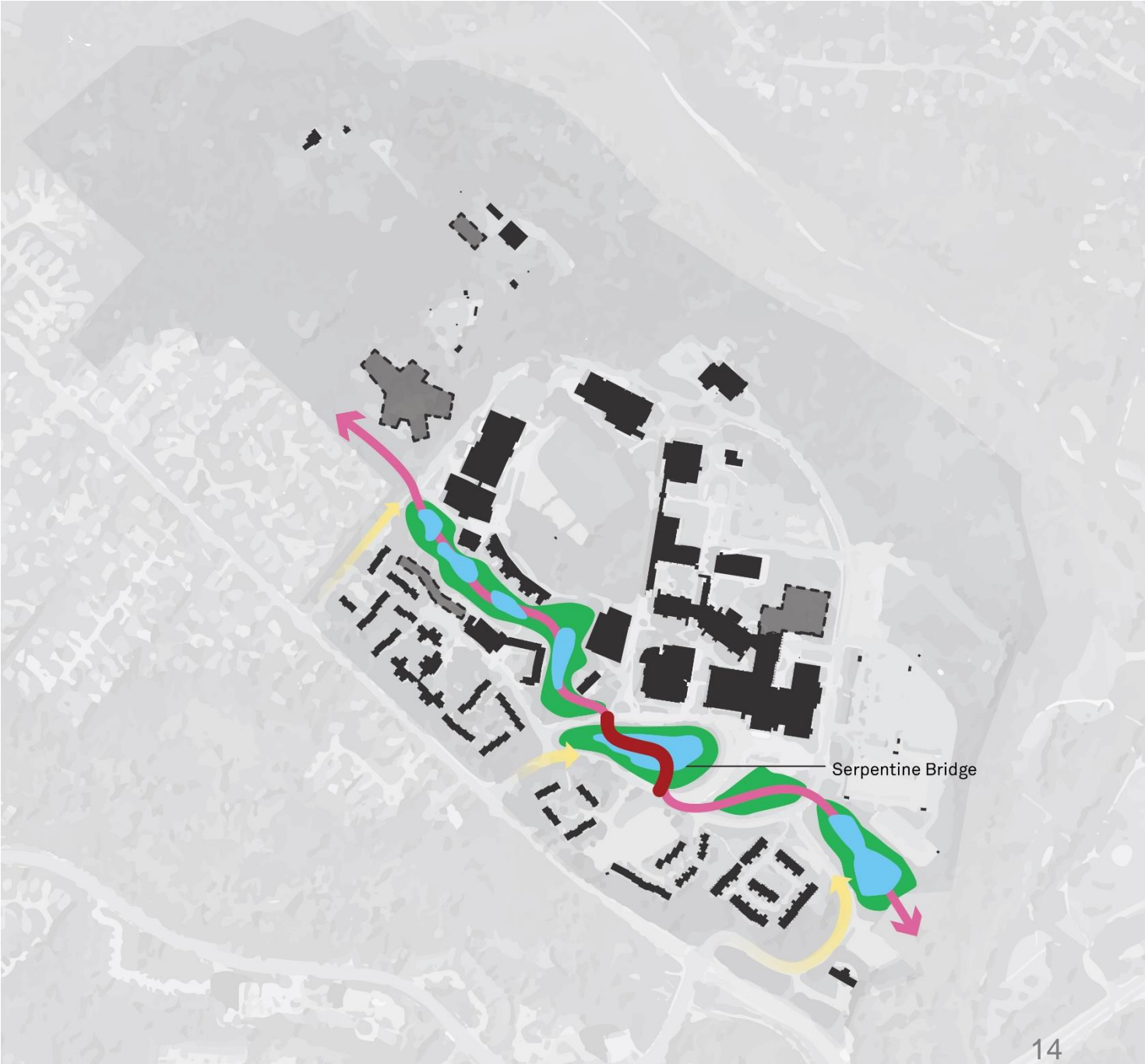
□ Anthropogenic Features



Forest Threshold



Riparian Threshold



Commons: Campus Heart



Learning Forest



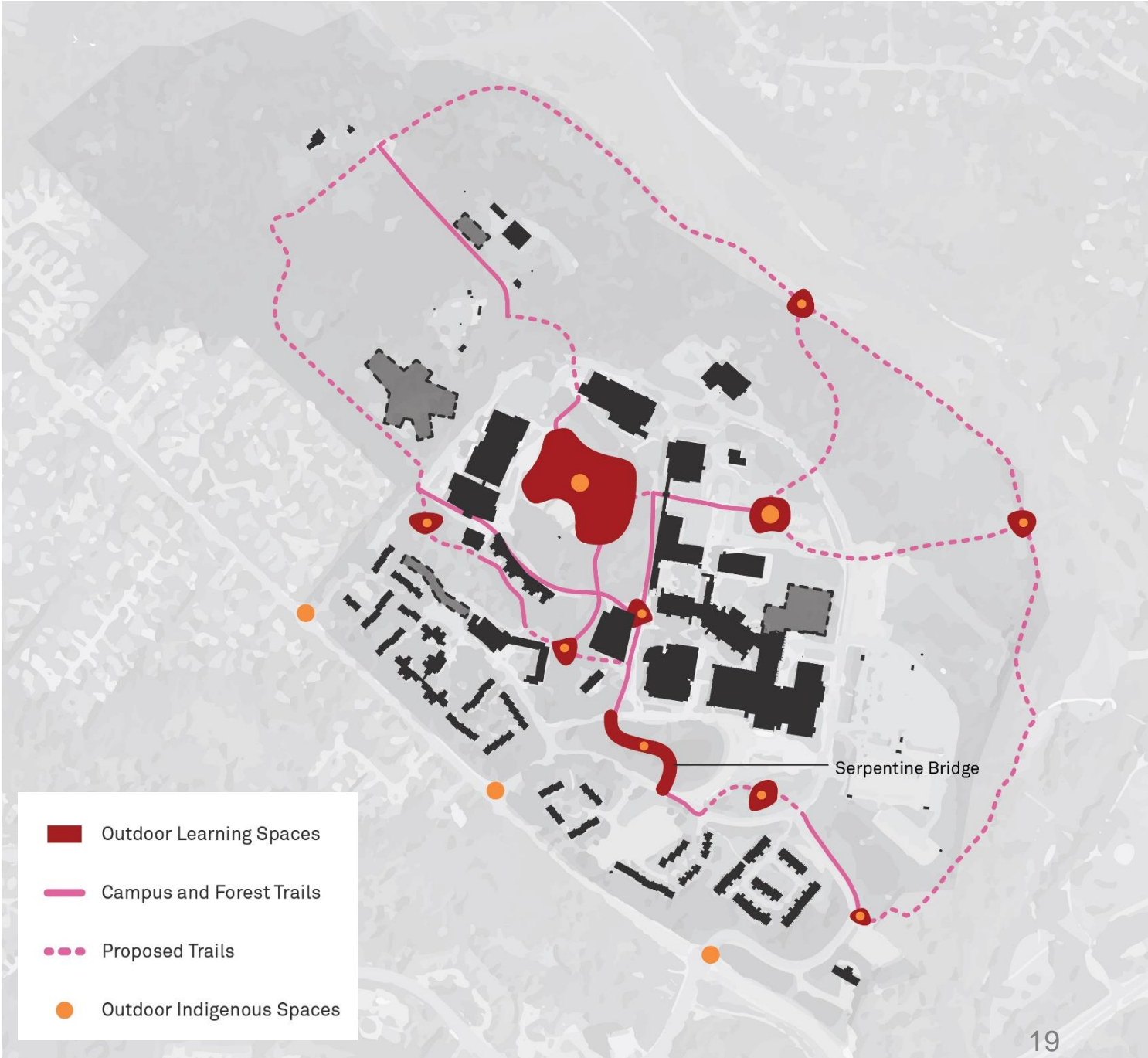
Consolidated Sports Complex



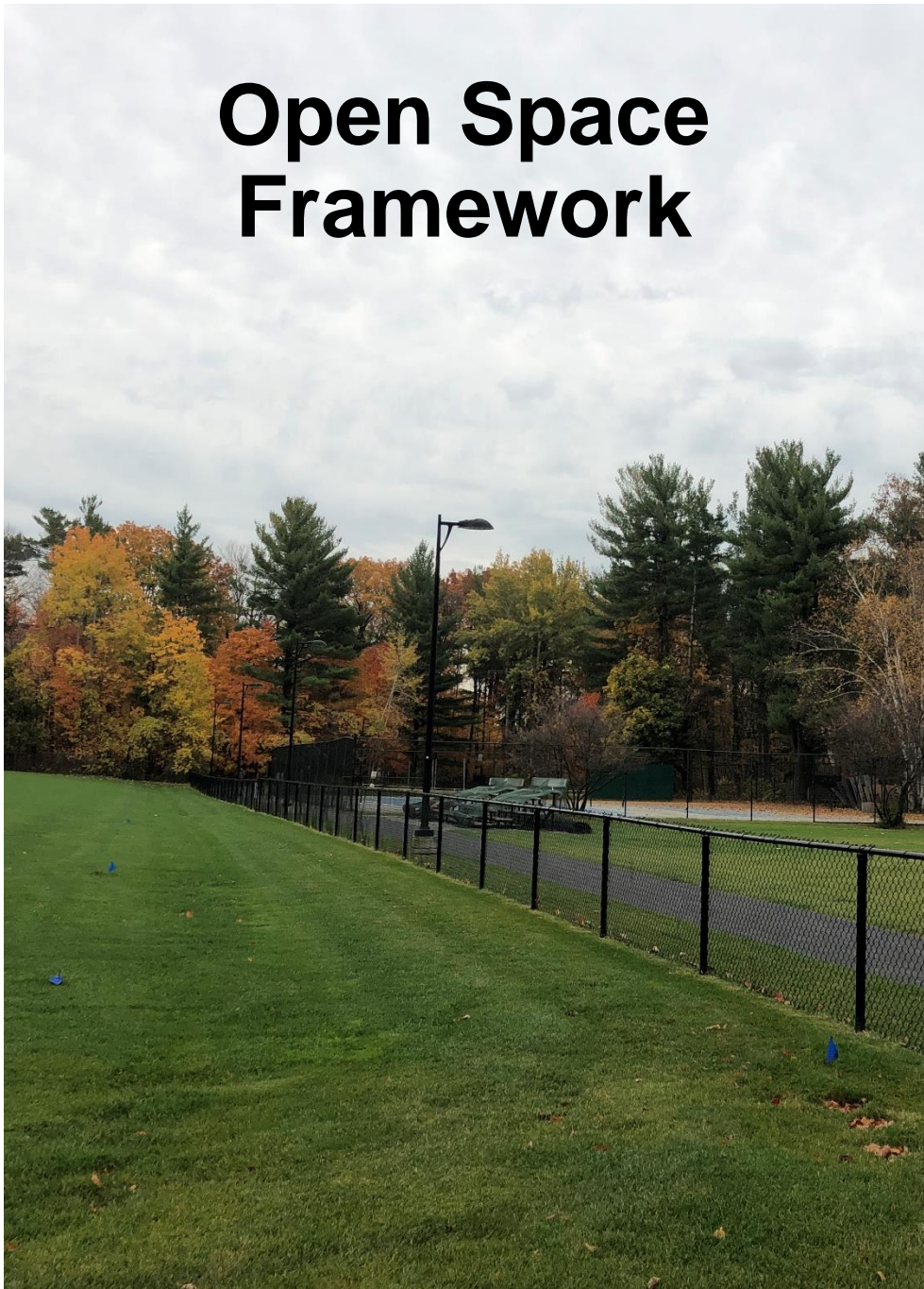
Allées



Indigenous Place Keeping & Placemaking



Open Space Framework



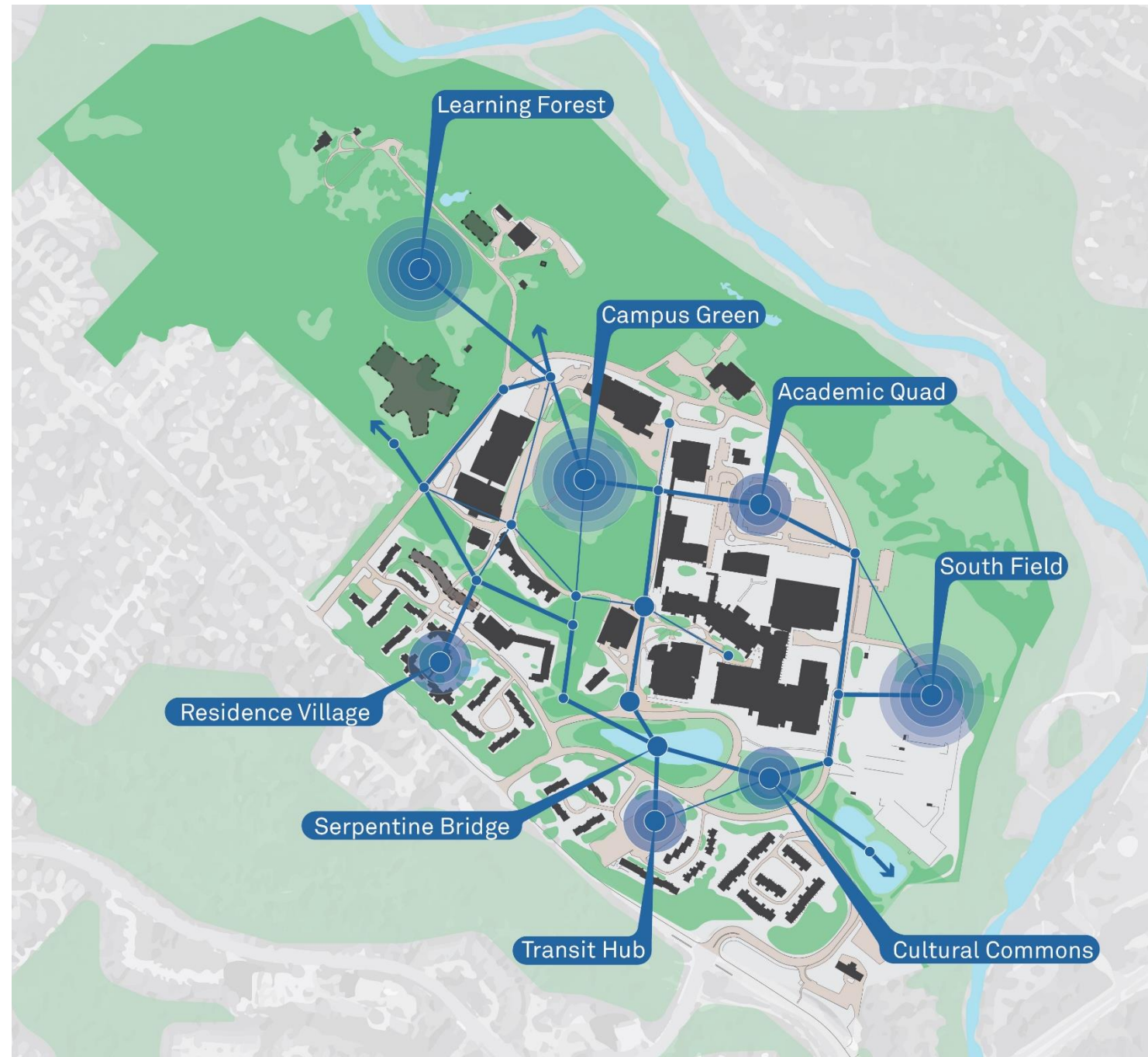
Potential Development Sites

- Confirmed Development Sites
- Potential Development Sites
- Potential Open Space Redevelopment Site
- Planned CUP Locations

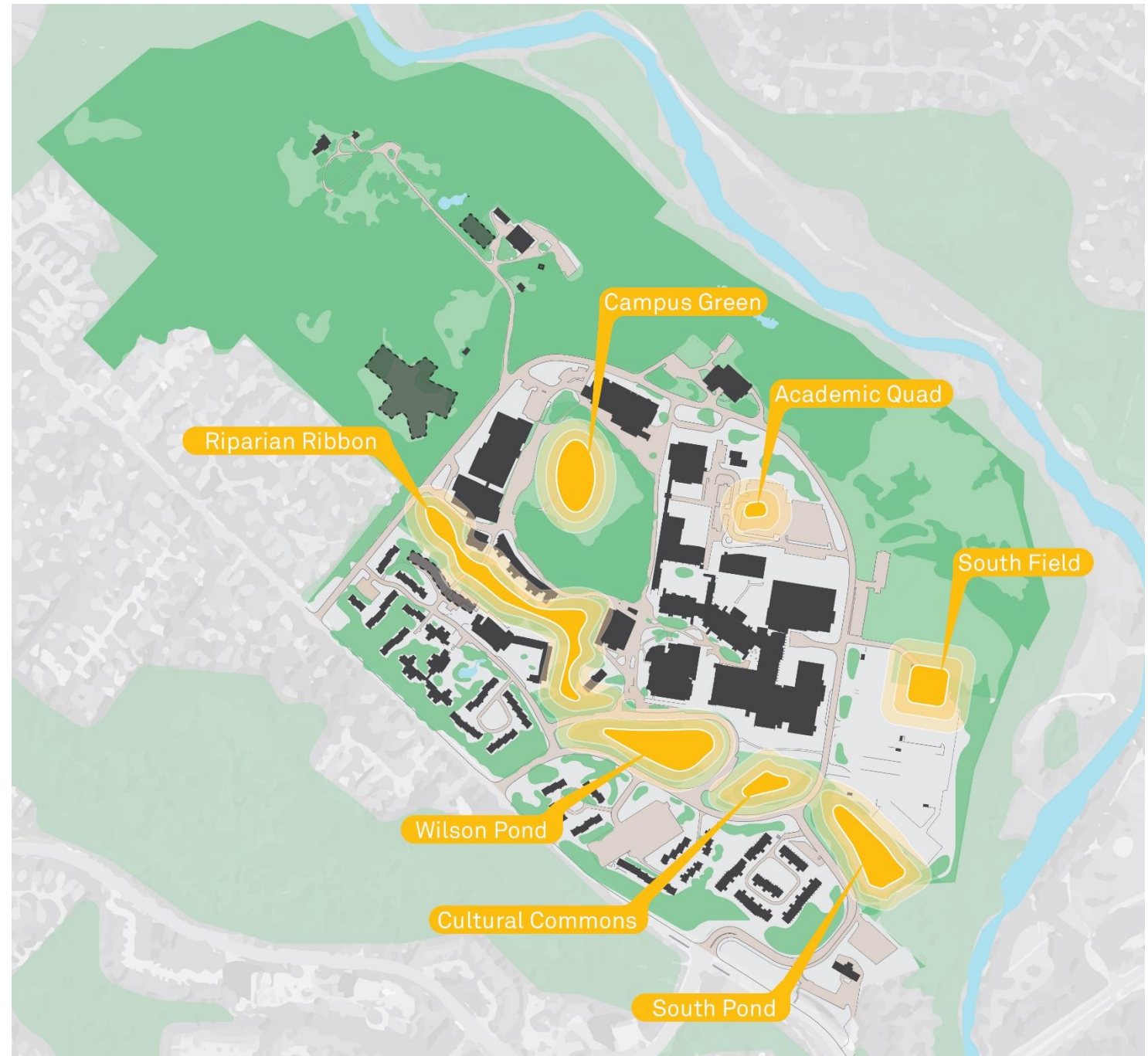


Future Nodes & Connections

- Nodes
- Key Connections



Priority Open Spaces



Campus Transportation Network

Issues

- Most traffic accesses campus from the north
- Busy southbound left entering campus in the AM at Outer Circle Road N.
- Busy eastbound right-turn exiting campus in the PM

Opportunities

- Outer Circle Road S. has spare capacity – encourage traffic to use this entrance
- Transform Outer Circle Road into a complete street with dedicated cycling lanes
- Improve access to infrastructure for cycling, walking, and transit
- Explore potential for transit hub

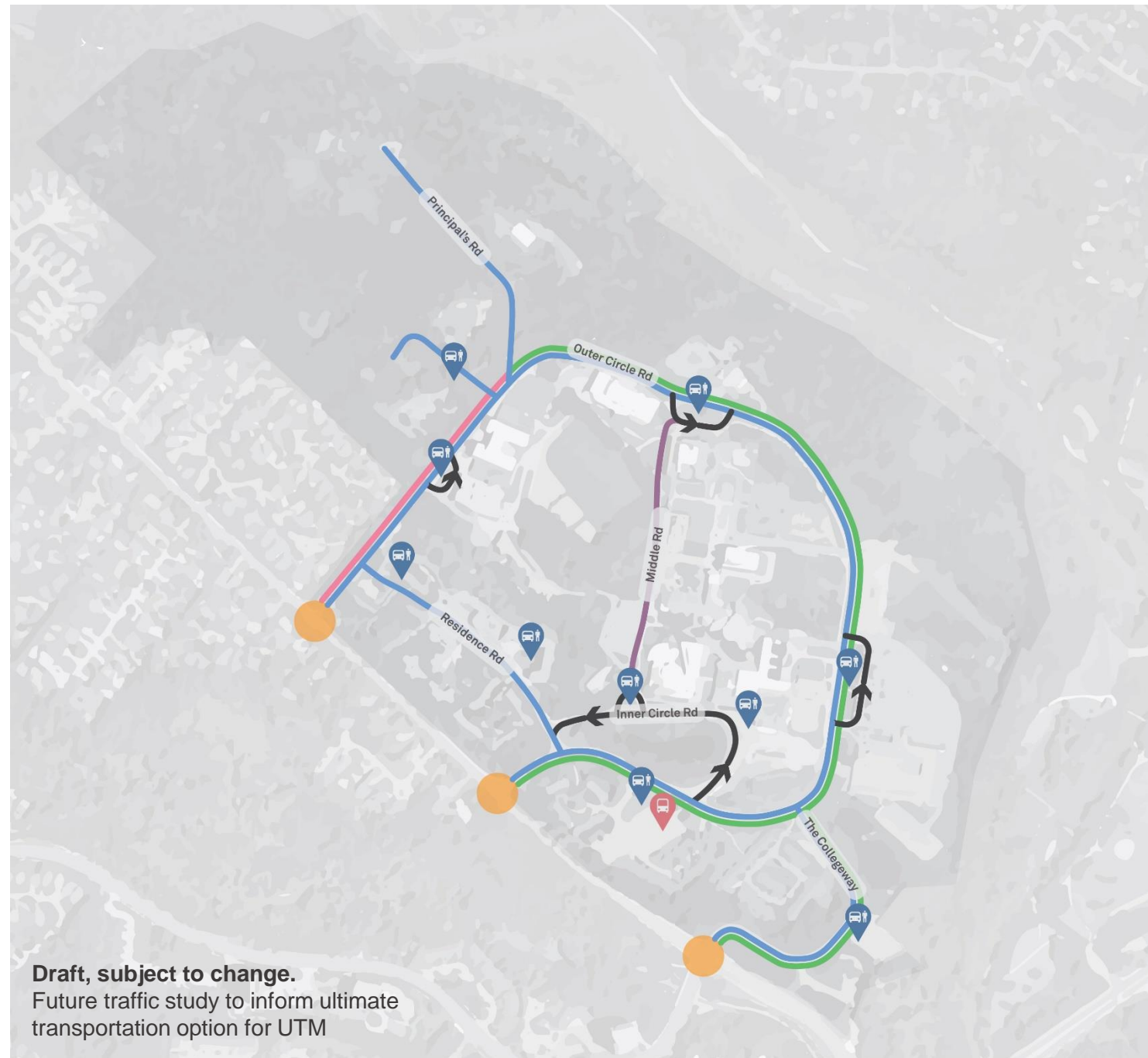
Traffic study will be undertaken to support the Campus Master Plan Update



Draft Transportation Option A: Two Way

Two way travel through majority of campus

- Vehicle Entrance
- Vehicle Two-Way
- Vehicle One-Way
- Multi-use Path
- On-Street Bike Lanes (both sides)
- Pedestrian Street
- Pick-up / Drop-off
- Potential Transit Hub Location

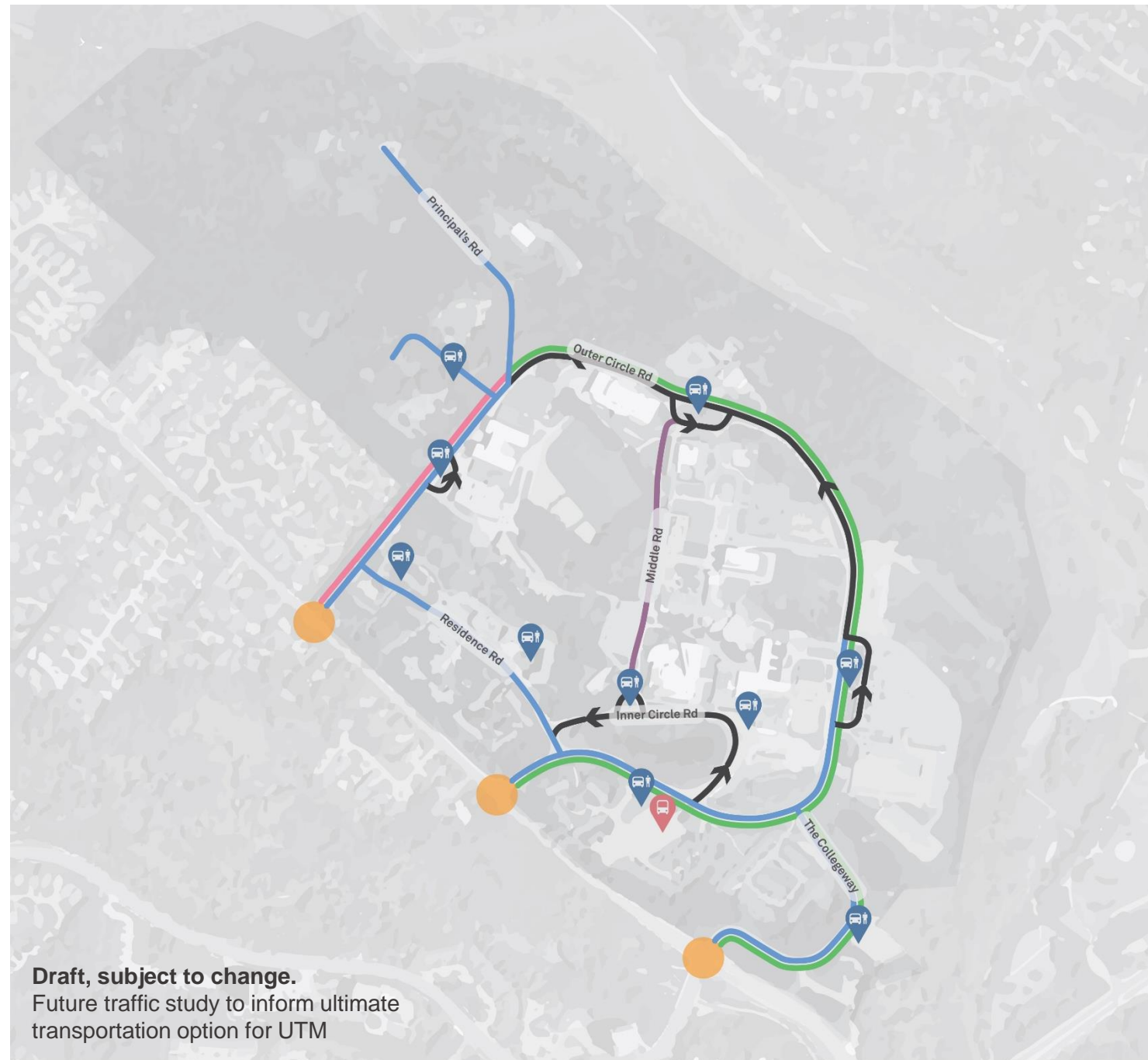


Draft Transportation Option B: One Way

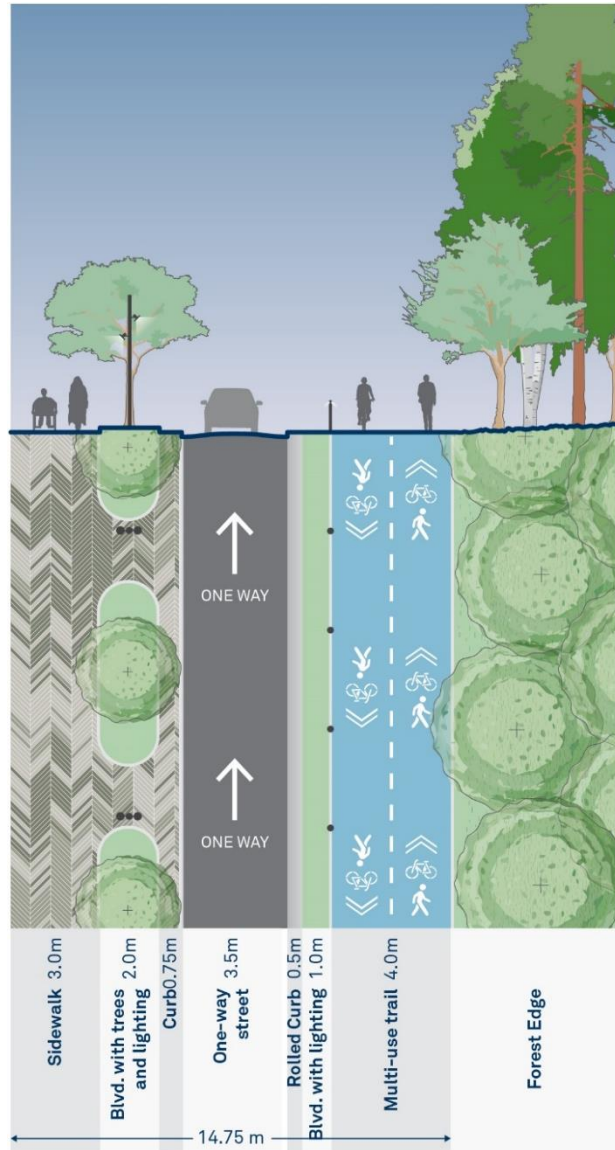
Two way travel through majority of campus

One way segment on Outer Circle Rd from RAWC counter-clockwise to Principal's Rd

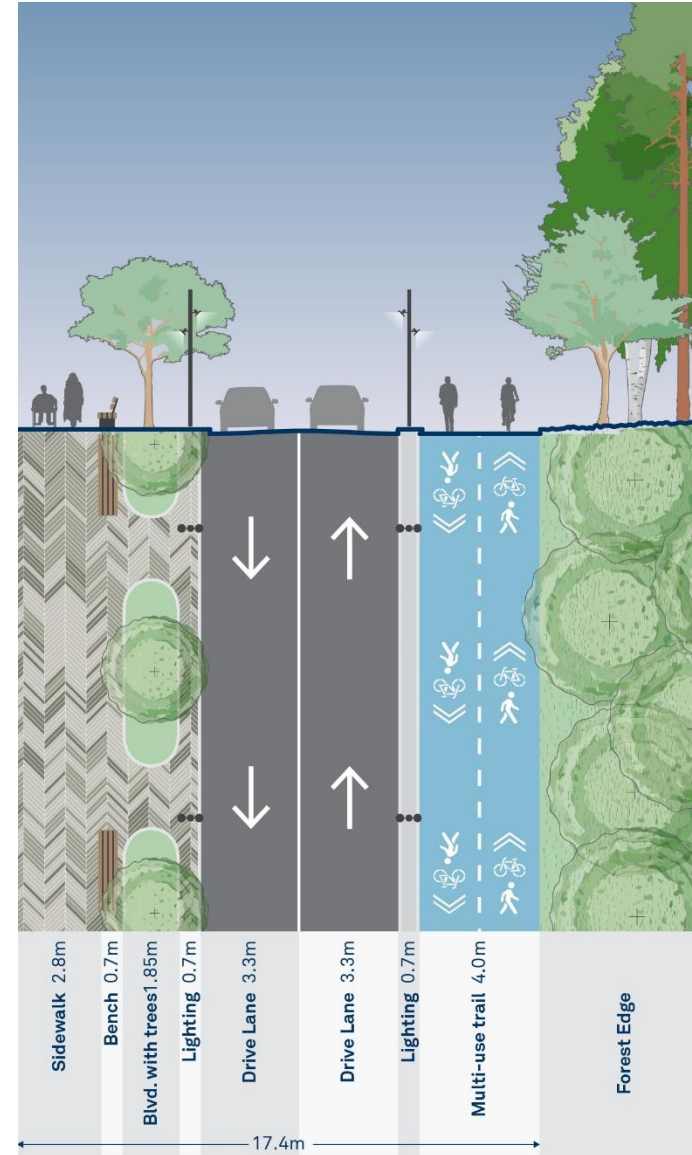
- Vehicle Entrance
- Vehicle Two-Way
- Vehicle One-Way
- Multi-use Path
- On-Street Bike Lanes (both sides)
- Pedestrian Street
- Pick-up / Drop-off
- Potential Transit Hub Location








One Way Permanent (Draft)
Outer Circle Rd. looking north from
the Instructional Centre

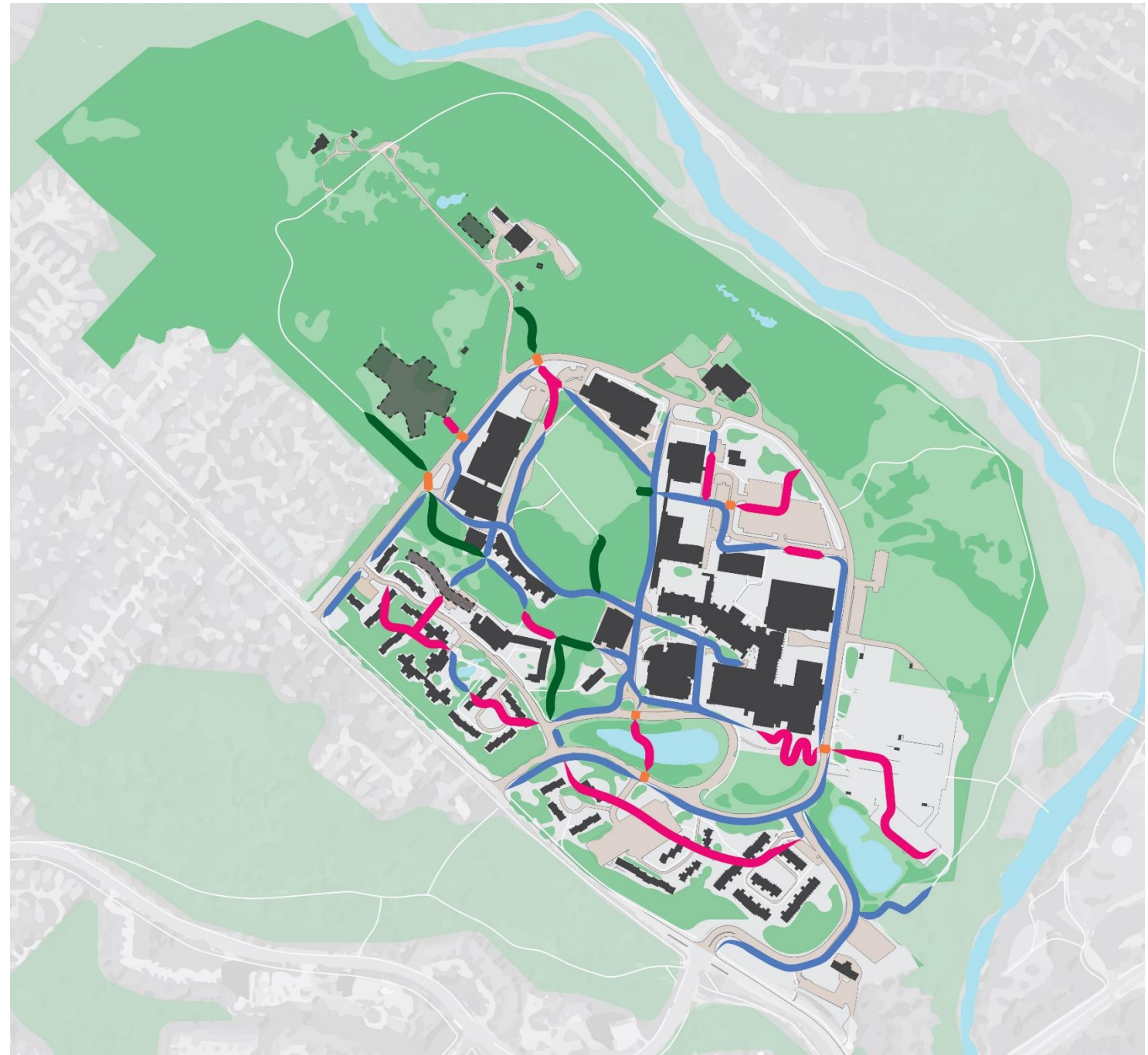


Two Way Permanent (Draft)
Outer Circle Rd. looking north from the
Instructional Centre



Pedestrian Network

-  Existing Pathways
-  Priority Pedestrian and Cyclist Pathways (Existing)
-  Potential New or Improved Pedestrian Connections
-  Potential Eco-Zone Connections
-  Potential Improved Road Crossings

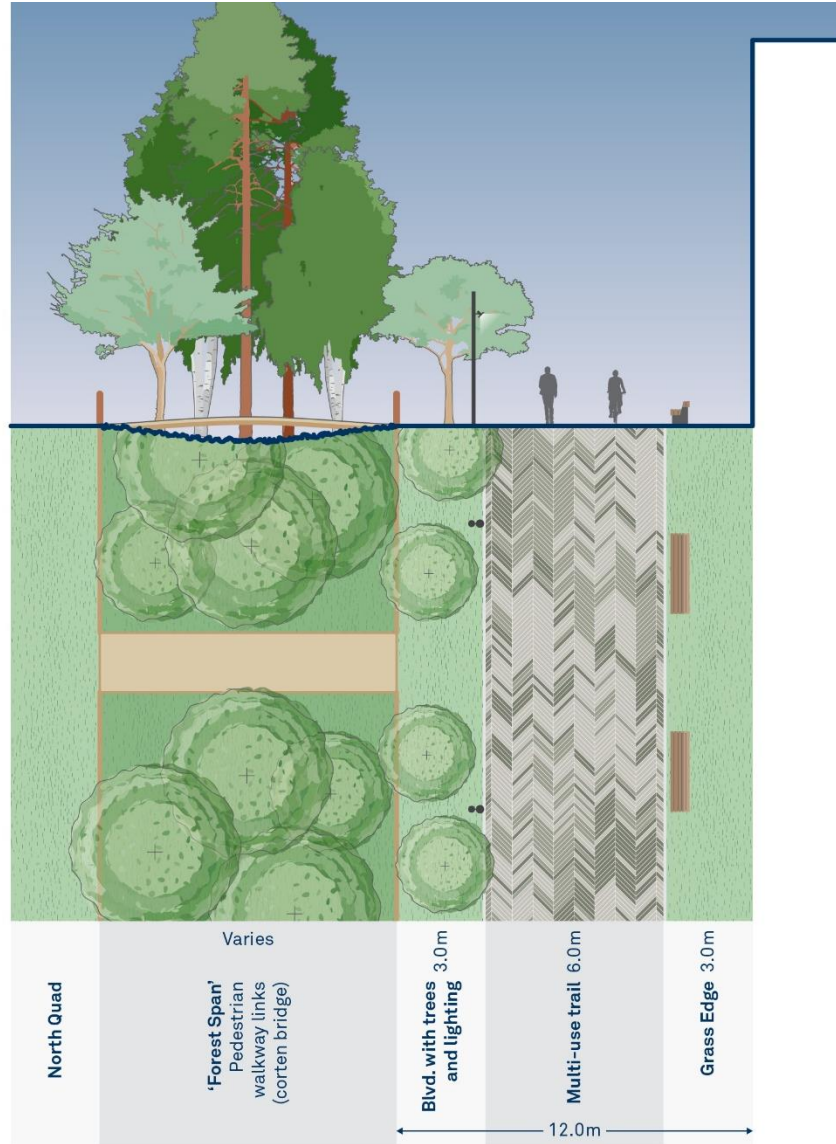


Pedestrian Enhancement Zones

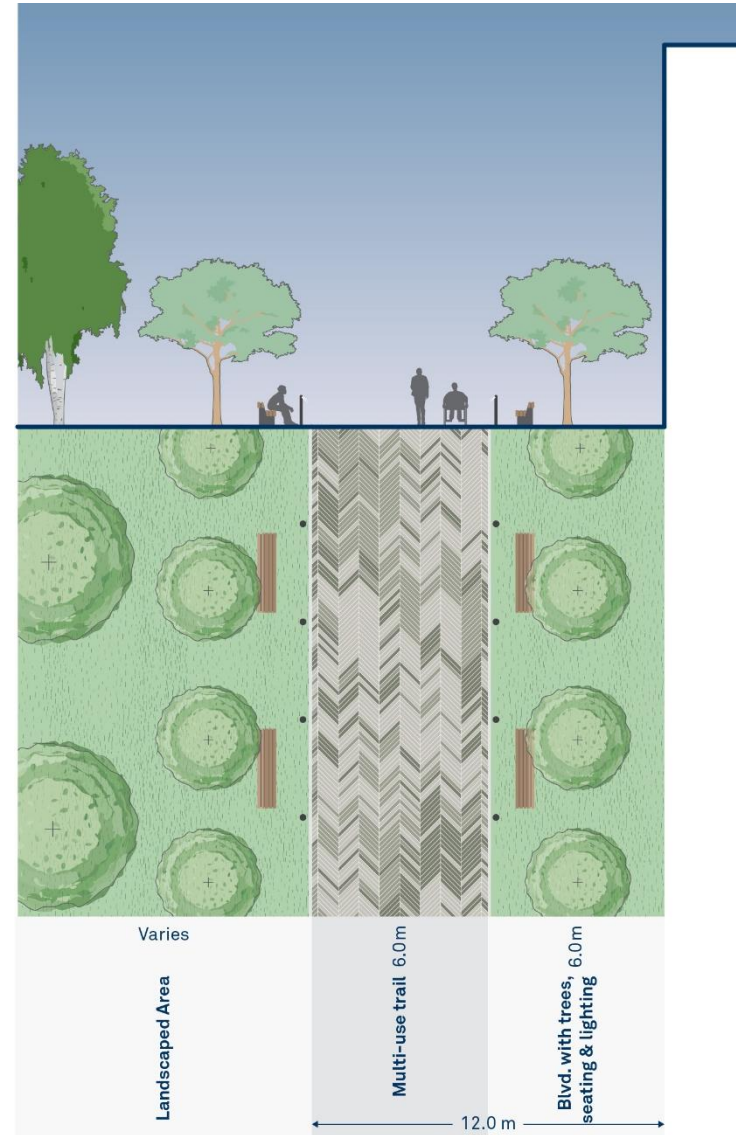
- Gateways
- Multi-Use Pathway
- ▭ Pedestrian Enhancement Zones



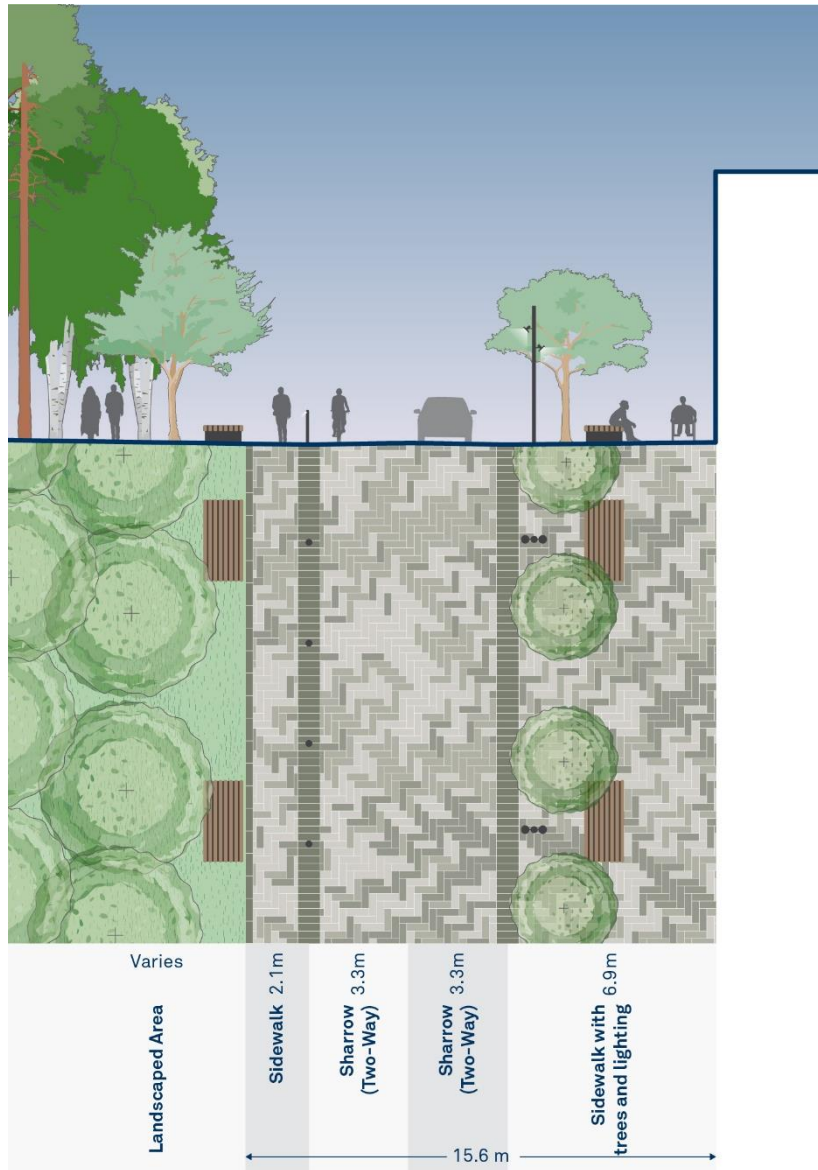
Pedestrian & Cyclist Connection (Draft)
Middle Road at CCT



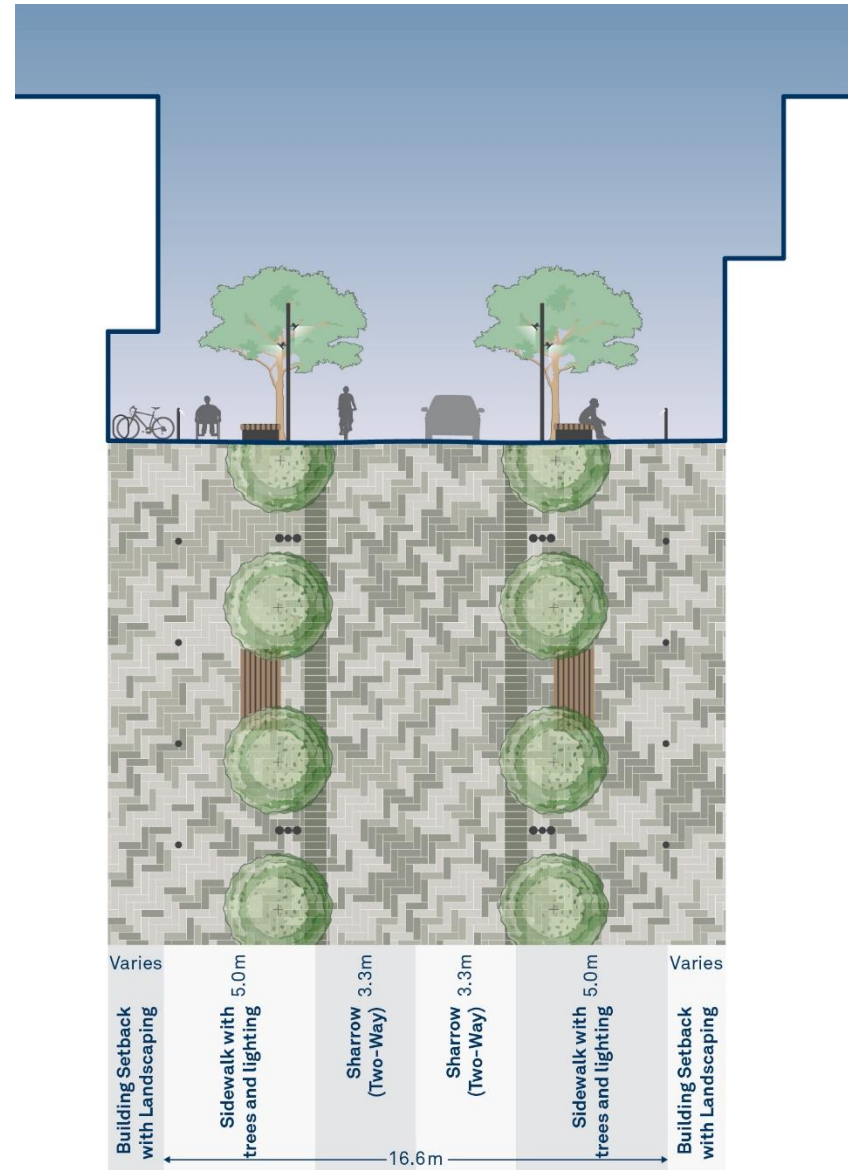
Pedestrian & Cyclist Connection (Draft)
Middle Road at HMALC



Residence Road Shared Street (Draft)
Looking north from Oscar Peterson



Residence Road Shared Street (Draft)
Looking north from the north end of Residence Road



DISCUSSION & NEXT STEPS

