

# EXPERIENTIAL LEARNING HUB WEBSITE

JANUARY 30, 2020



UNIVERSITY OF  
TORONTO

BOUNDLESS



# Launched Fall 2019; Experiential Learning Hub (“EL Hub”) website serves as an entry point into U of T experiential learning across our three campuses.



## WEBSITE LINK -

[HTTPS://EXPERIENTIALLEARNING.UTORONTO.CA/.](https://experientiallearning.utoronto.ca/)



# Three distinct and tailored perspectives – Student, Faculty and Staff, and External Partners.



UNIVERSITY OF TORONTO

Experiential Learning Hub

**FOR STUDENTS ▶**  
Use the Hub to explore your options, find the best places to connect with opportunities, learn about resources and supports, and understand some of the policies that guide these experiences.

**FOR FACULTY & STAFF ▶**  
Use the Hub to explore the various types of experiential learning that you can develop at the University, find offices on campus that might be helpful as you develop your initiative, learn about the theoretical basis of experiential learning, and understand some of the policies that guide these experiences.

**FOR EXTERNAL PARTNERS ▶**  
Use the Hub to explore the various ways you can engage with our students, find your ideal on-campus partners at the University of Toronto, learn about how best to support students, and understand some of the policies that guide these experiences.

PROFILES | FAQ | GUIDELINES & PROCEDURES | ACCESSIBILITY AND CONTACT

# Each perspective has four categories – Explore, Find, Learn, and Guide.

UNIVERSITY OF TORONTO

## Experiential Learning Hub

STUDENTS ☰ Change Profile

- EXPLORE**  
TYPES OF EXPERIENTIAL LEARNING OPPORTUNITIES
- FIND**  
DISCOVER EXPERIENTIAL LEARNING OPPORTUNITIES AT U OF T
- LEARN**  
RESOURCES AND TOOLS TO SUPPORT YOUR EXPERIENTIAL LEARNING OPPORTUNITY AT U OF T
- GUIDE**  
GUIDELINES & PROCEDURES TO HELP NAVIGATE YOUR EXPERIENTIAL LEARNING OPPORTUNITY

### EXPERIENTIAL LEARNING AT THE UNIVERSITY OF TORONTO

Welcome to the Experiential Learning Hub for students at the University of Toronto. Here, you'll find everything you need to apply your knowledge and learn from your experiences.

But first of all, what is Experiential Learning?

Experiential learning means learning from experience or learning by doing. Experiential learning allows you to learn new skills, understand workplace practices, acquire new knowledge, and explore how your academic experiences can help you contribute to the broader community and society. Through reflecting on these experiences, you will be able to perceive changes in your thinking or attitudes, articulate what you have learned, and position yourself for future

“We have so much to contribute, so much more we can accomplish together, to help reimagine the world – as a world of equality and justice, health and prosperity, wisdom and wonder.”

President, Meric Gertler



**Need help learning what opportunities are available? Users can explore different types of experiential learning opportunities.**

**The Decision Tree, for example, is a helpful tool that allows users to find the right opportunity based on their needs.**

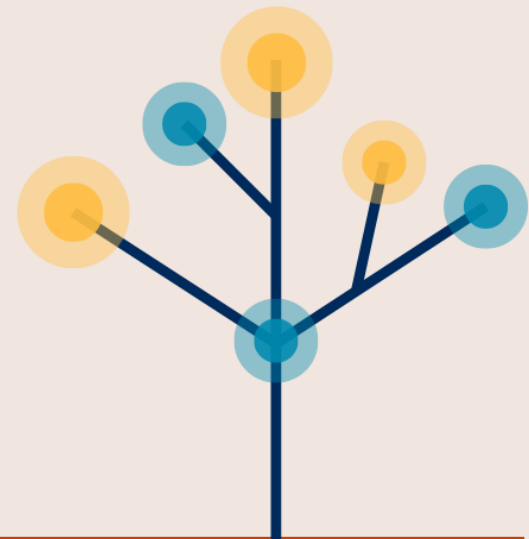
Use this tool to incorporate your organization's goals and objectives

### TYPE OF ORGANIZATION


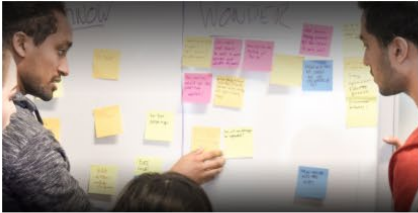

- NonProfit, Community, Public
- Industry

### GOAL FOR ENGAGING

- Connect with start-ups and entrepreneurial-minded students.
- Engage student expertise to support a research project or problem.
- Get support for a specific project / problem your organization is facing.
- Bring students in for a work-term to support the day-to-day work of your organization.
- Build your pipeline of potential future hires / as a tool for student recruitment.
- Support students in meeting the requirements for gaining certification from an external professional body.
- Support students in developing their job-ready skills.



***Need help finding these experiences on campus? Users can find more information regarding points of contact within their division.***

EXPLORE TYPES OF EXPERIENTIAL LEARNING OPPORTUNITIES	FIND DISCOVER EXPERIENTIAL LEARNING OPPORTUNITIES AT U OF T	LEARN RESOURCES AND TOOLS TO SUPPORT YOUR EXPERIENTIAL LEARNING OPPORTUNITY AT U OF T	GUIDE GUIDELINES & PROCEDURES TO HELP NAVIGATE YOUR EXPERIENTIAL LEARNING OPPORTUNITY
<h2>FINDING EXPERIENTIAL LEARNING OPPORTUNITIES AT U OF T</h2>			
<p>There are various offices on campus that can support you in the development of experiential learning opportunities. Below you will find an overview of these offices.</p>			
 <p><b>DEVELOPING CO-CURRICULAR EXPERIENTIAL OPPORTUNITIES</b></p> <p><small>Co-curricular experiential learning opportunities can</small></p>	 <p><b>DEVELOPING COMMUNITY-ENGAGED LEARNING OPPORTUNITIES</b></p> <p><small>The Centre for Community Partnerships offers a</small></p>	 <p><b>DEVELOPING ENTREPRENEURSHIP OPPORTUNITIES</b></p> <p><small>For support in developing an entrepreneurship</small></p>	

# Need help locating resources and tools to help support EL? Users can learn about the available resources and tools.

## EXPERIENTIAL LEARNING 101

- Introduction
- The Pedagogy of Experiential Learning Philosophies
- Other Pedagogical Approaches to Experiential Learning
- Quality Criteria
- Summary
- References and Acknowledgements
- Powerpoint Version

◀ BACK TO RESOURCES

### INTRODUCTION

Highlighting how students most effectively learn through experience, experiential learning theory is well-known for its application to higher education teaching and learning, and the facilitation of educational experiences both within and beyond the classroom.

**THE CONCEPT OF DELIBERATE EXPOSURE AND PRACTICE IN INFLUENCING HIGHER ORDER THOUGHT, LEARNING, AND DEVELOPMENT DATES BACK TO THE EARLY WORK OF PLATO AND ARISTOTLE.**

Experiential learning is considered the specific process by which a student acquires knowledge or meets learning goals through experience.

Whereas, experiential education refers to the pedagogically grounded development and facilitation of the learning experience.

**THIS RESOURCE INCLUDES INFORMATION ON:**

- The pedagogical foundations of experiential learning and Kolb's experiential learning theory.
- Alternative theories that can be applied to enhance the quality of student experience.
- Quality criteria for facilitating student's learning through experience.

**THE PEDAGOGY OF EXPERIENTIAL LEARNING PHILOSOPHIES** ▶

**OTHER PEDAGOGICAL APPROACHES TO EXPERIENTIAL LEARNING** ▶

**QUALITY CRITERIA** ▶

**SUMMARY** ▶

**REFERENCES AND ACKNOWLEDGEMENTS** ▶



## EXPERIENTIAL LEARNING COURSE AND PROGRAM DEVELOPMENT RESOURCES

These resources for faculty and staff were developed by Professor Ashley Stirling, Vice Dean of Academic Affairs in the Faculty of Kinesiology & Physical Education and are designed for self-directed learning. Pedagogically grounded and empirically informed, the resources were created in consultation with a tri-campus working group and draw upon the collective expertise and experiences of faculty and staff across the institution. They focus on advancing the quality development and delivery of both curricular and co-curricular experiential learning opportunities. There are also a suite of student-facing modules that you may wish to incorporate into your experiential learning course or program.



### EXPERIENTIAL LEARNING 101

Explore the theoretical foundations of experiential learning.

LEARN MORE



### PURPOSEFUL EXPERIENCE

Discover key considerations for an impactful learning experience.

LEARN MORE



### REFLECTION

Examine various forms and frameworks for reflection.

LEARN MORE



### DESIGNING THE EXPERIENCE

Learn about logistics, matching and preparation.

LEARN MORE



### ADMINISTRATIVE REQUIREMENTS

Review some of the administrative requirements and institutional policies related to experiential learning.

LEARN MORE



### ACCESS & ACCESSIBILITY

Support inclusive student learning experiences.

In consultation with a tri-campus working group, **Prof. Ashley Stirling**, Vice-Dean of Academic Affairs in the Faculty of Kinesiology and Physical Education, developed a number of resources for faculty and staff.

# Need help understanding what guidelines, policies and procedures need to be considered? Users are guided to the relevant material.

## UNIVERSITY OF TORONTO GUIDELINES

- GENERAL LIABILITY INSURANCE COVERAGE**
- INTELLECTUAL PROPERTY (IP)
- MEMORANDUM OF UNDERSTANDING (MOU)
- NON-DISCLOSURE / CONFIDENTIALITY AGREEMENTS
- PLACEMENT AGREEMENTS
- RESEARCH ETHICS
- WORKPLACE INSURANCE

The University of Toronto's comprehensive general liability coverage covers against legal liability arising from University operations which cause bodily injury, personal injury or damage to property of others (third parties). This can include liability arising out of the actions of students while engaged in University managed and supervised activities such as athletics, practicum placements, field/research trips, and incidental medical/dental malpractice, etc.

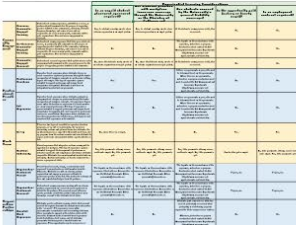
Depending on specific circumstances, the University will extend its general liability insurance coverage to students. The University maintains commercial general liability insurance, which will defend and indemnify faculty, staff, and students against claims arising out of bodily injury or property damage.

For questions about the extension of general liability insurance coverage, faculty or staff program coordinators should contact the **University of Toronto's Risk Management and Insurance** department.

### EXPERIENTIAL LEARNING RISK MANAGEMENT MATRIX

Refer to this overview of University of Toronto guidelines and procedures associated with different types of experiential learning opportunities.

DOWNLOAD




The EL Hub also has a number of great examples of EL in practice. If you have any EL opportunities you would like to **profile**, we would be delighted to add them to the website.

**EXPERIENTIAL LEARNING PROFILES**


Below are a sampling of some of the amazing experiential learning opportunities happening at the University of Toronto. You can browse through these profiles or filter based on experiential learning type or the home campus of the initiative.

All Profile Categories    Select Type    Select Division    Search ...




**iPRAKTIKUM**

iPRAKTIKUM is an experiential learning and internationalization initiative that helps students find impactful internships designed to promote global fluency and cultural competence and to deepen skills acquired in the classroom in work contexts.



**INTERNSHIP IN THE ARTS AND VISUAL STUDIES: VST410H5**

The Internship in the Arts and Visual Studies (VST410H5) provides an excellent opportunity for students to gain practical work experience at an institution or business related to the arts and to visual studies.



**SERVICE DELIVERY IMPROVEMENT (SDI) PROJECT**

The SDI Project was a partner project with the Toronto East Quadrant Local Immigration Partnership (TEQLIP). Participants helped create a data warehouse platform that has collected, aggregated, and anonymized over 90,000 records.



# Thank you.

<https://experientiallearning.utoronto.ca/>