

UNIVERSITY PLANNING DESIGN AND CONSTRUCTION

CAPTIAL PROJECTS REPORT TO BUSINESS BOARD

*October 9, 2018*

# AGENDA

- PROGRAM SUMMARY
- PROJECTS UNDER DESIGN
- PROJECTS UNDER CONSTRUCTION
- PROJECTS RECENTLY COMPLETED

# PROGRAM SUMMARY

## Project Cost Volume by Phase and Campus

	Mississauga	Scarborough	St. George	TOTAL
Planning*	0	\$226,663,702	\$288,900,991	341,800,991
Design	\$152,952,156	0	\$440,079,420	593,031,576
Construction	\$147,804,999	\$52,900,000	\$94,901,793	295,606,792
TOTAL	\$300,757,155	\$279,563,702	\$823,882,204	<b>\$1,404,203,061</b>
Number of Projects	3	4	88	95

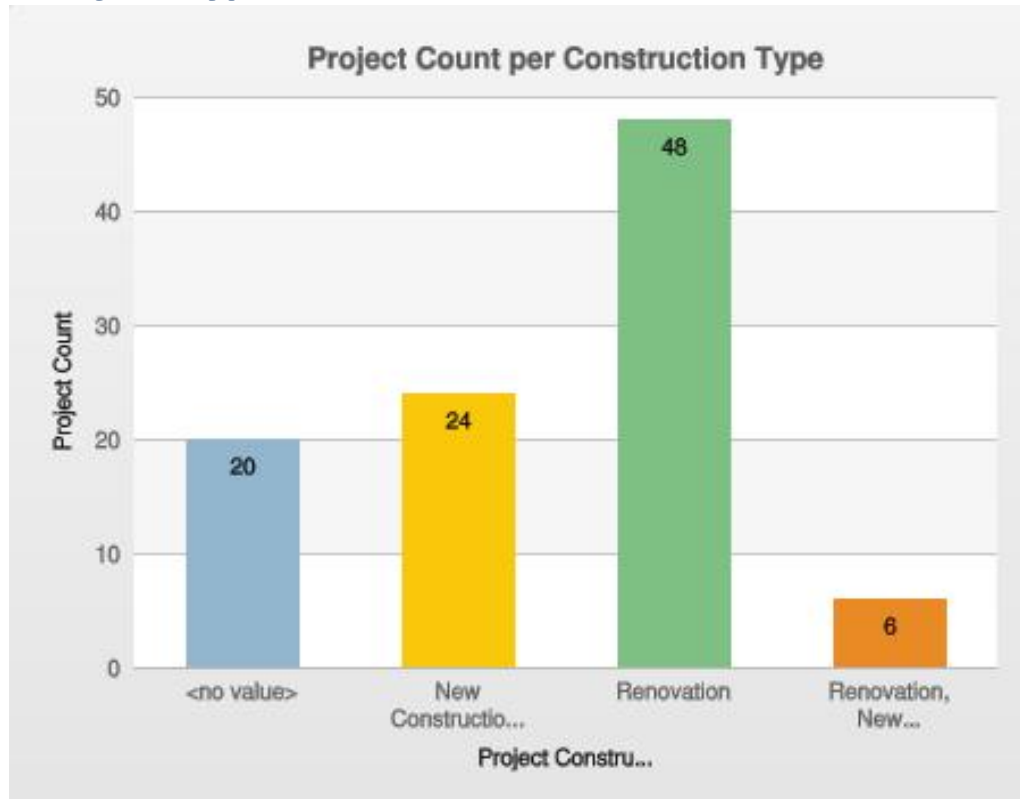
*\*Planning projects have approved terms of reference.*

*\*\*Design projects have contracted with an architect.*

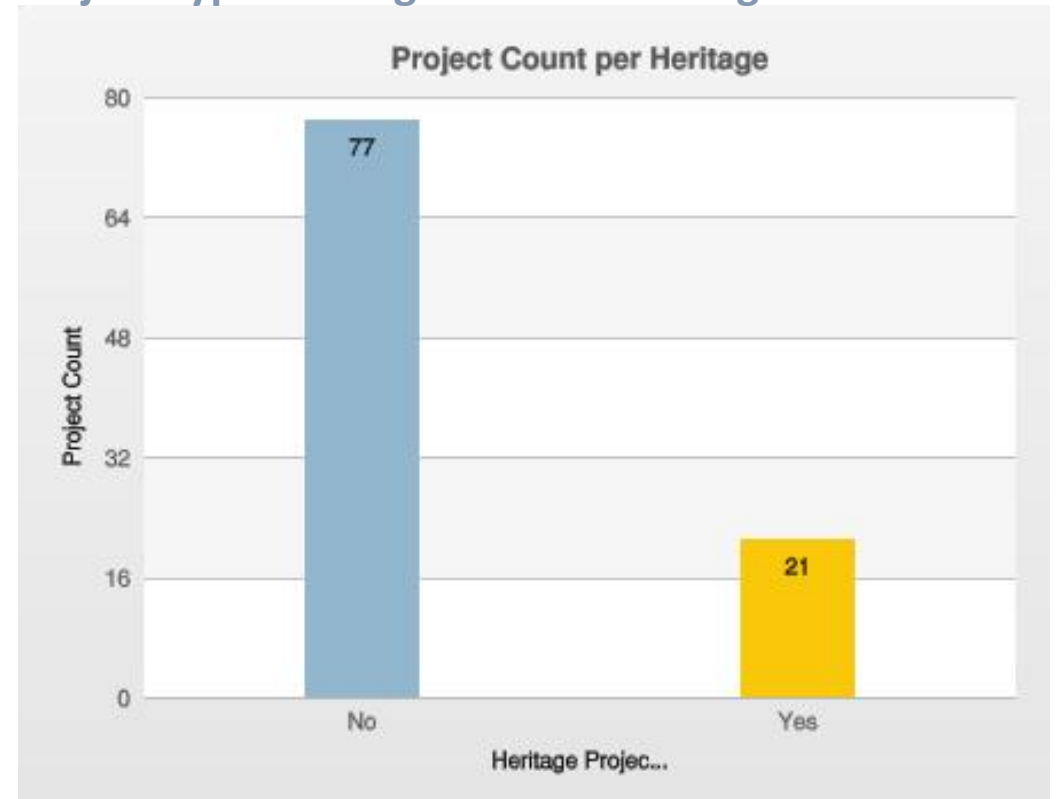
*\*\*\*UTM and UTSC projects are all over the \$5M minor projects threshold.*

# PROGRAM SUMMARY

## Project Type Renovation vs. New Construction



## Project Type Heritage vs. Non-Heritage



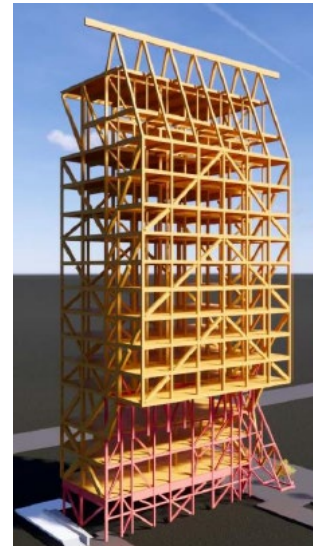
# PROJECTS UNDER DESIGN

## Academic (Wood) Tower

- 14 Stories,
- 74 Meters Tall
- 11,000 GSM
- Academic Offices on Floors 5 to 10
- Classrooms on Floors 11 to 13
- Rotman, Faculty of Kinesiology, Faculty of Arts and Science
- Architects: Patkau / MJMA Architects

## Status

- Design Development (about 50% design completion)
- Construction start planned for April 2019 contingent on fund availability
- About \$7M in government funding identified to support wood innovation



# PROJECTS UNDER DESIGN

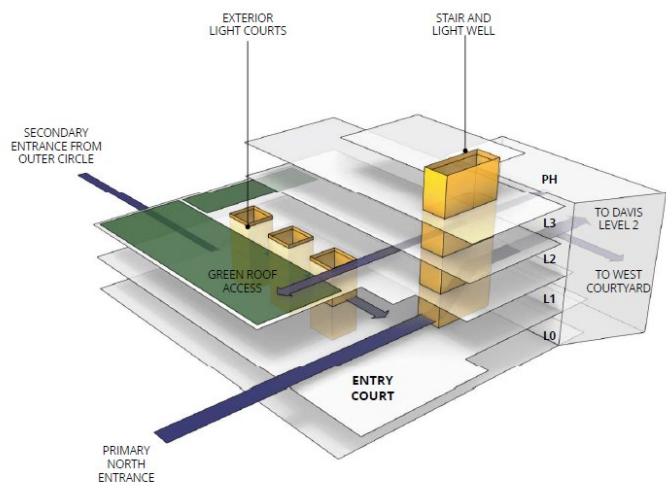
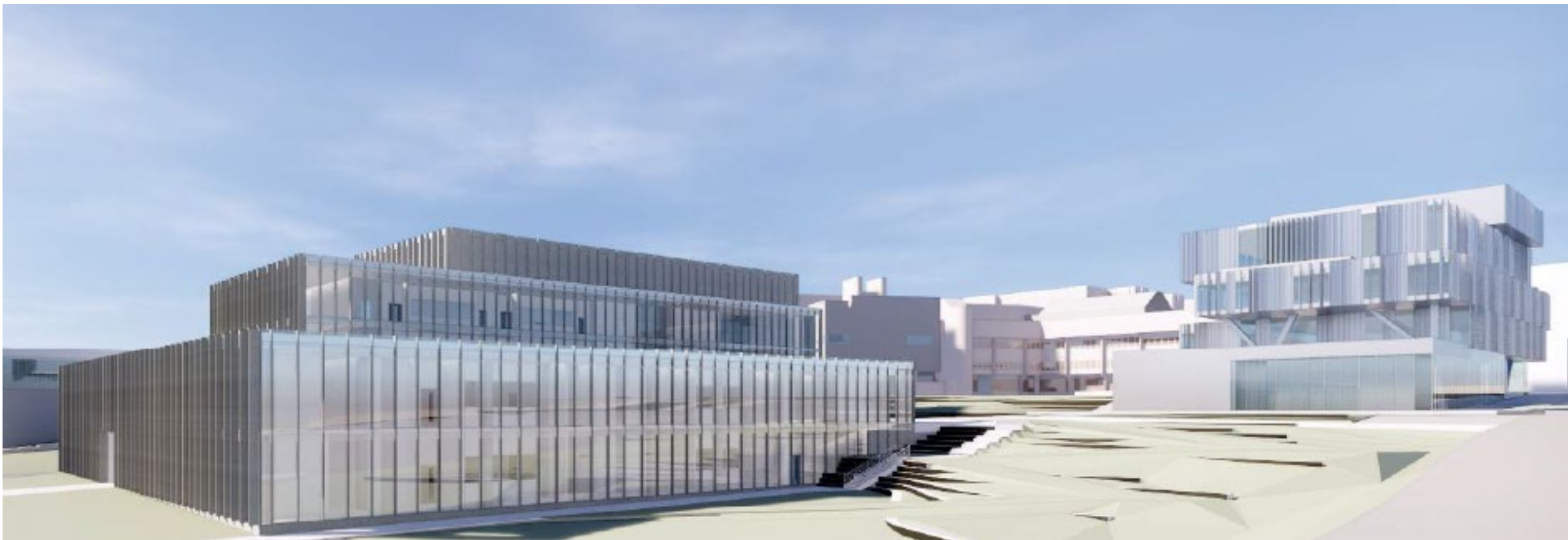
## UTM Science Building

- New Science Building Centre for Medicinal Chemistry as foundational occupant
- 15,550 GSM
- Connection to Davis Building at Multiple Levels
- Architect: Kieran Timberlake

## Status

- Schematic Design (about 30% design completion)
- Construction start planned for April 2019 contingent on fund availability





# PROJECTS UNDER DESIGN

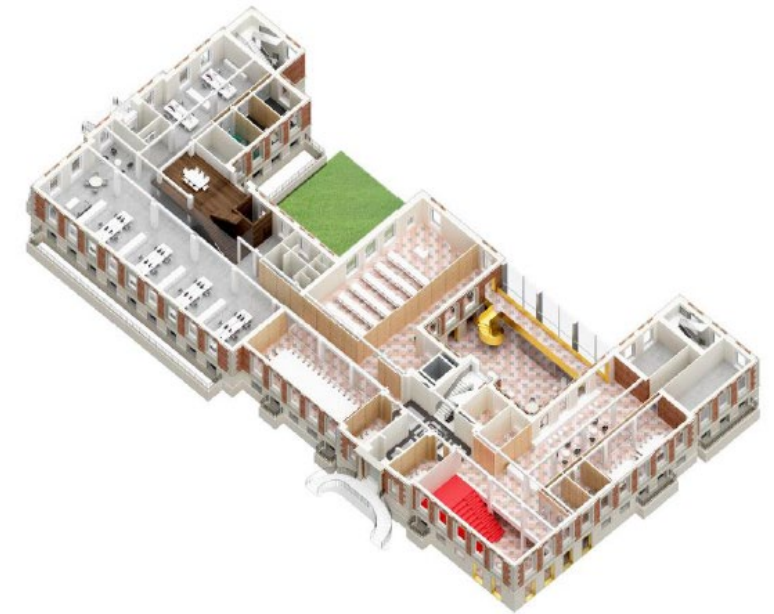
## Fitzgerald Building

- 8660 GSM
- Historic Renovation of 1927 Building
- General Purpose Administrative Use
- Architects: Office of Metropolitan Architecture / RDHA



## Status

- Schematic Design (about 30% design completion)
- Construction start planned for April 2019 contingent on fund availability





# PROJECTS UNDER DESIGN

## Landscape of Landmark Quality

- 90,000 SM Revitalization of the St. George Campus's Historic Core
- Below grade parking
- Addition of 180 trees,
- 25 new “necklace” gardens
- Granite Paving
- Architects: KPMB / Michael Van Valkenburgh

## Status

- Design Development (about 50% design completion)
- Project over budget and being reconciled



# PROJECTS UNDER DESIGN

## Partners in Innovation and Entrepreneurship (PIE)

- Revitalization of the St. George Campus's Historic Core
- About 90,000 SM of landscape revitalization
- Architects: Weiss-Manfredi / Teeple Architects

## Status

- Design Development (about 50% design completion)
- Project over budget and being reconciled



# PROJECTS UNDER DESIGN

## Centre for Cities and Civilization

- Interdisciplinary School of Cities
- Multi-Occupant Program
- Architects: Diller Scofidio Renfro/  
Architects Alliance

## Status

- Schematic Design (30%) is over budget and budget is being reconciled



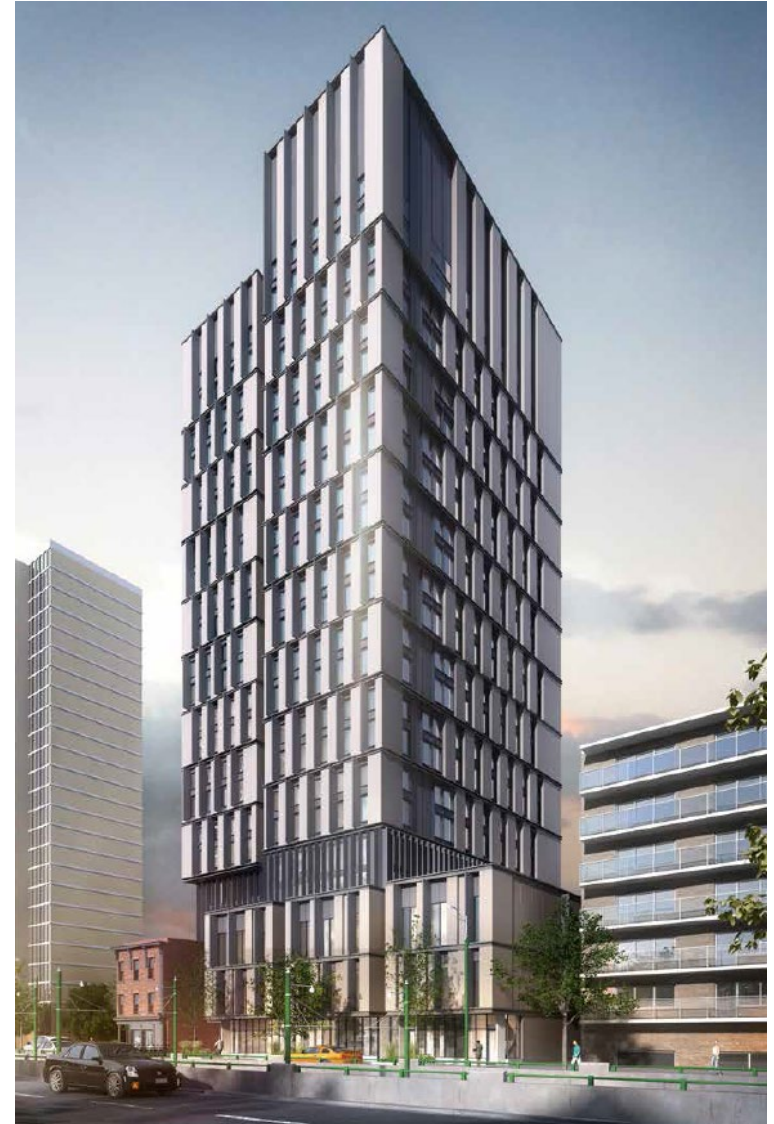
# PROJECTS UNDER DESIGN

## Spadina-Sussex Student Residence

- 23 Story Student Residence
- 511 beds
- Ground floor retail
- Architect: Diamond Schmidt

## Status

- In Design Development (60%)
- Agreement reached with community stakeholders through mediation



# PROJECTS UNDER CONSTRUCTION

## University College Renovation

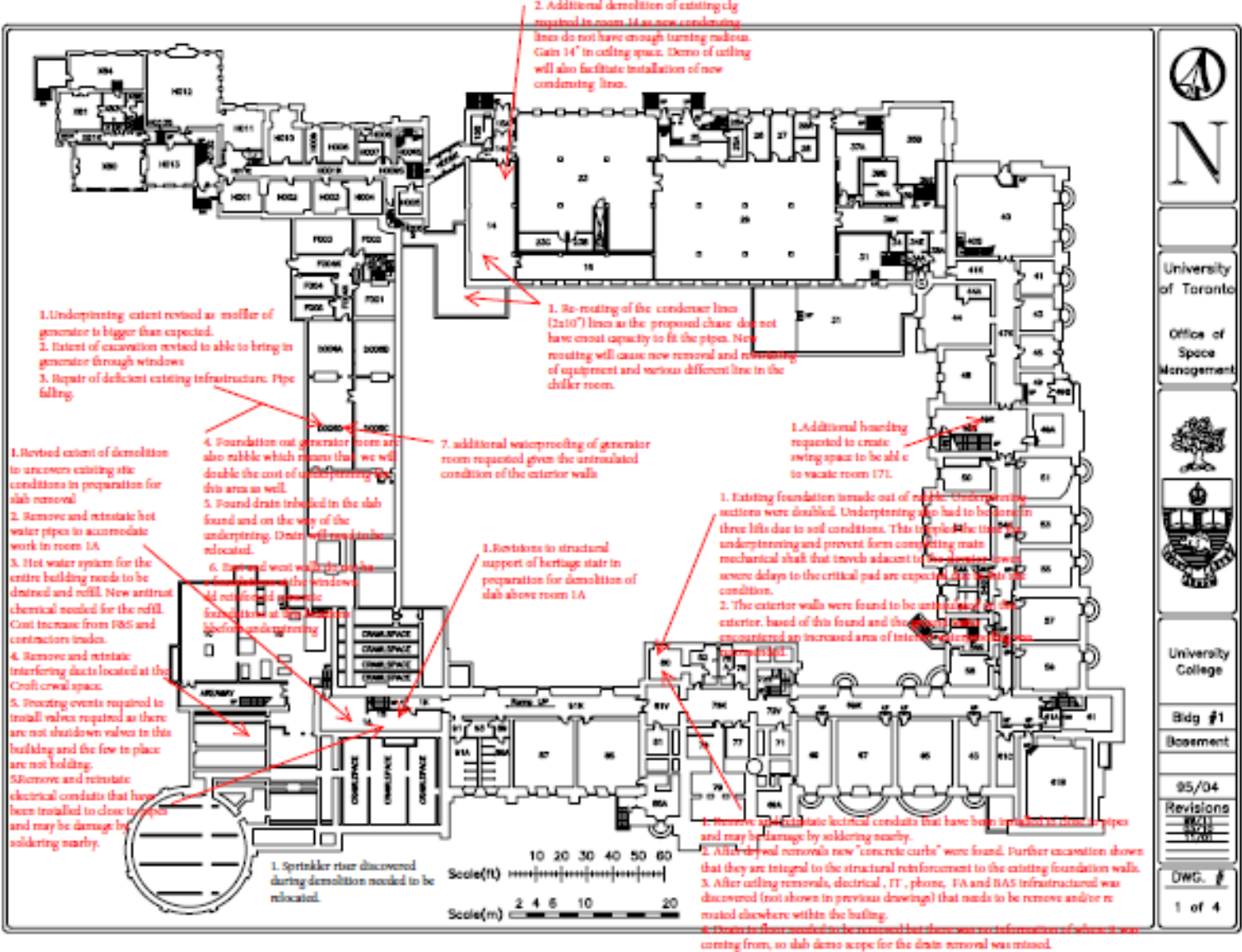
- Oldest Building on Campus
- 1,700 GSM renovation/180 GSM New Construction
- Architects: Kohn Shnier Architects

## Status

- Differing site conditions have significantly impacted the schedule



# PROJECTS UNDER CONSTRUCTION



# PROJECTS UNDER CONSTRUCTION

## UTSU Student Commons

- Renovation and re-use of building
- 5500 GSM of renovation/520 GSM of new construction
- Architects: Superkul

## Status

- Discovery of differing site conditions has translated into significant delays
- Construction completion schedule for December 2018



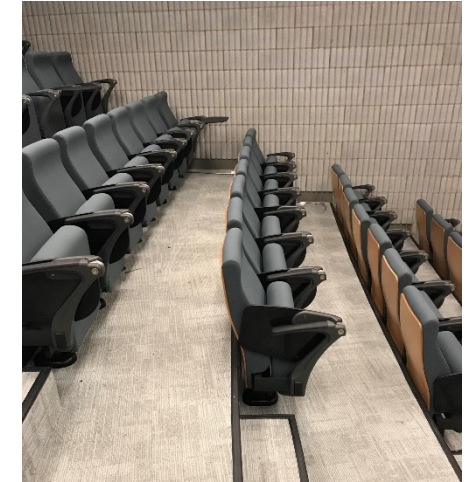
# PROJECTS UNDER CONSTRUCTION

## Transforming the Instructional Landscape

- Improving 65 Classrooms to current standards in phases
- 15,690 NSM renovated space

## Status

- Phase 2 recently awarded and mobilized





# PROJECTS UNDER CONSTRUCTION

## UTSC Highland Hall

- 13,500 GSM New Construction
- Architects: Perkins and Will

## Status

- Lower level teaching areas have been occupied  
remaining areas will be turned over by end of  
October



# PROJECTS UNDER CONSTRUCTION

## Robarts Common Library Addition

- 5540 GSM Addition
- Architect: Diamond Schmidt

## Status

- Municipal approval delays affected start of project
- Discovery of buried differing site conditions regarding existing building's foundation requiring redesign,
- Steel supply issues



THANK YOU