



Budget 2017

Academic Board

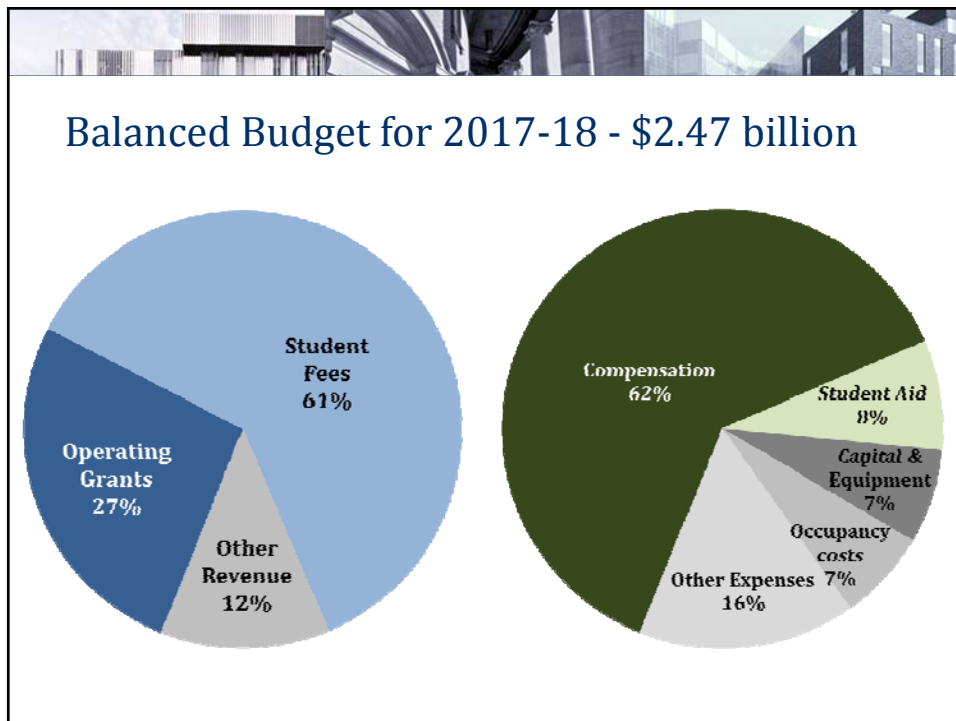
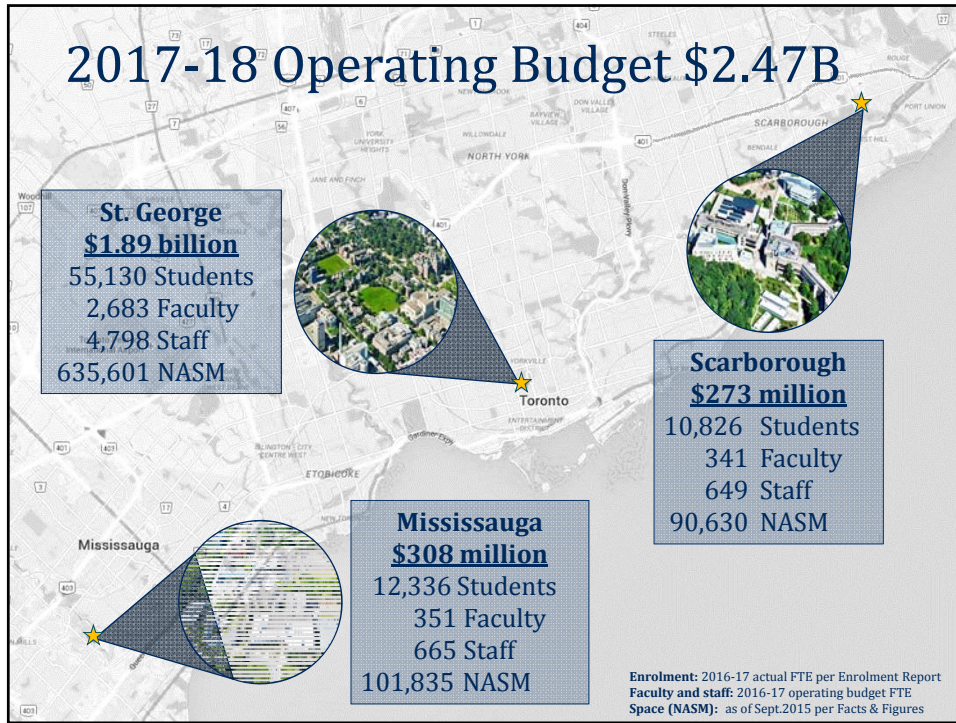
March 16, 2017

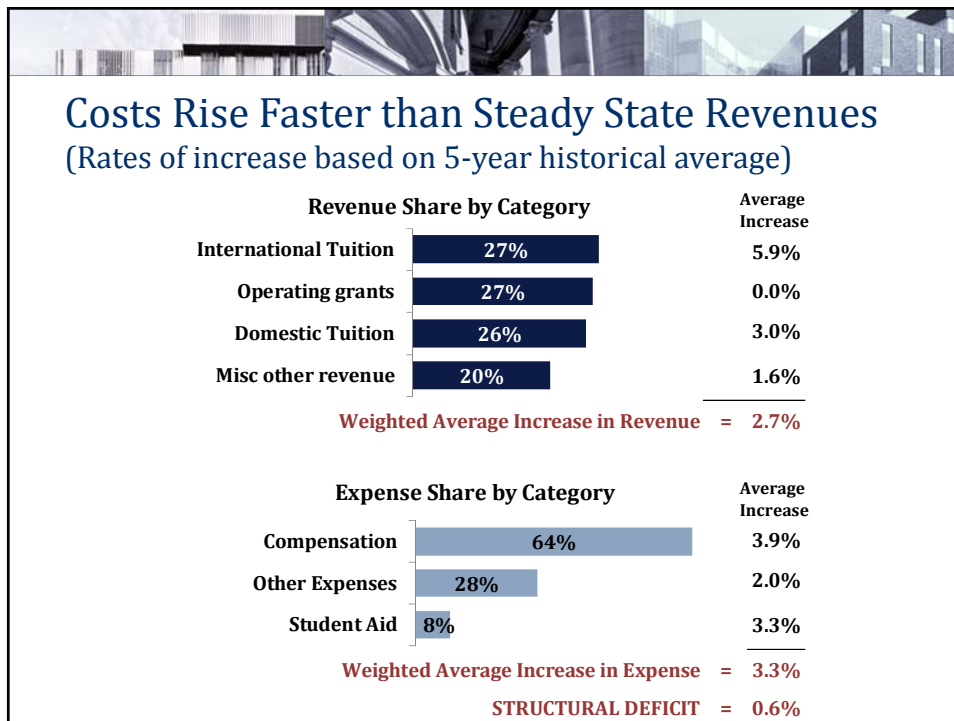
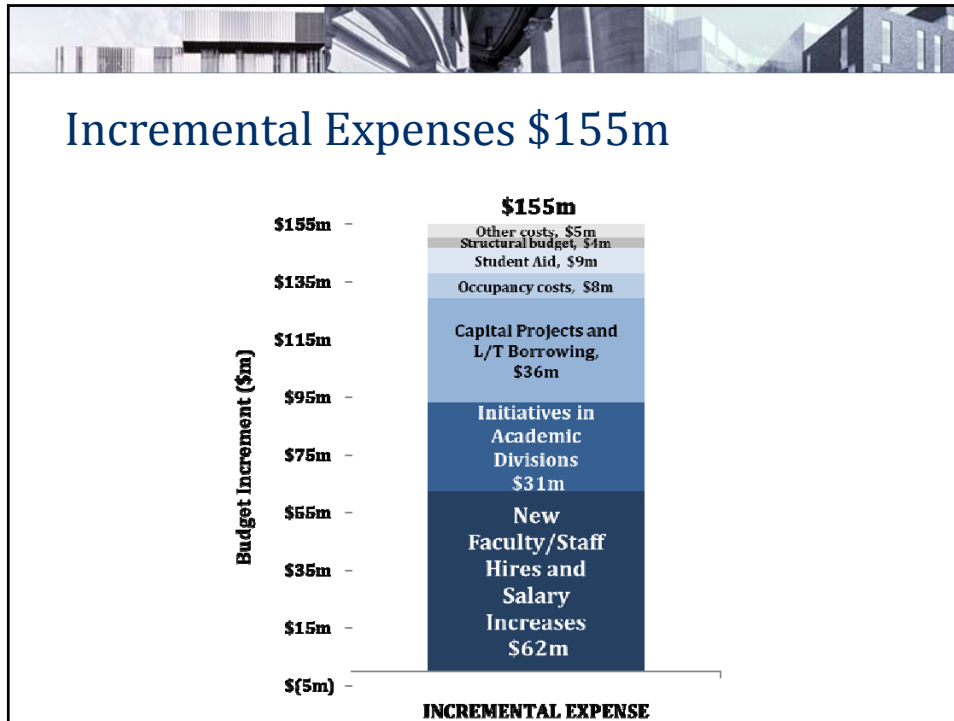


Agenda

- | | |
|-------------------------|--------------------------|
| 1) Context | 5) Funding Sources |
| 2) Students & Teaching | 6) Student Aid |
| 3) Faculty & Staff | 7) UF |
| 4) Infrastructure & UWC | 8) Opportunities & Risks |



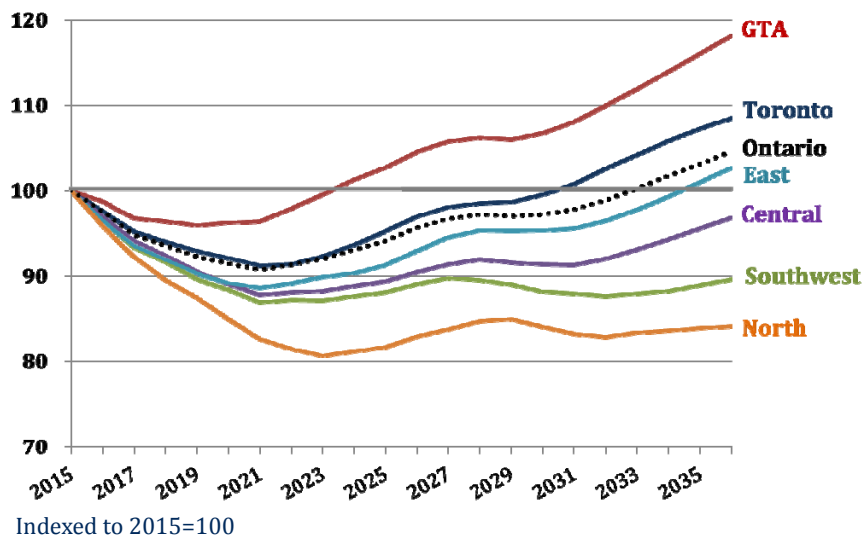




Students and Teaching

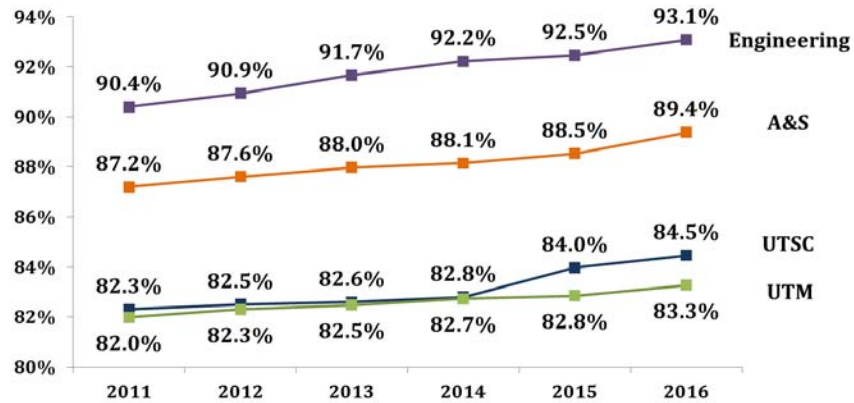


Trend in 18-20 year-old Ontario population

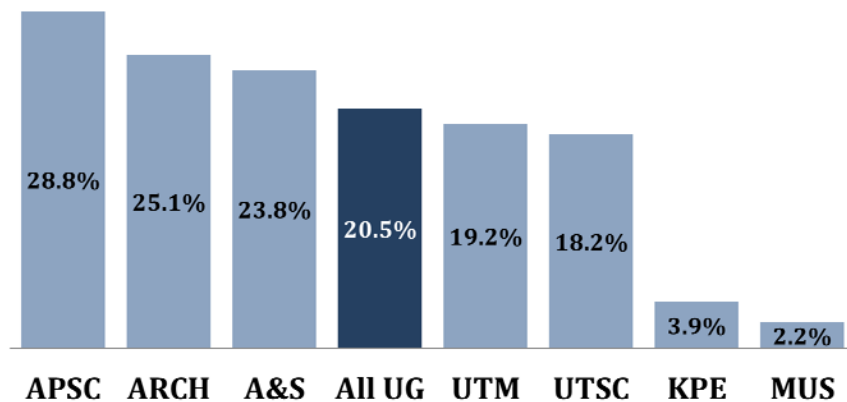


Demand and quality remain strong

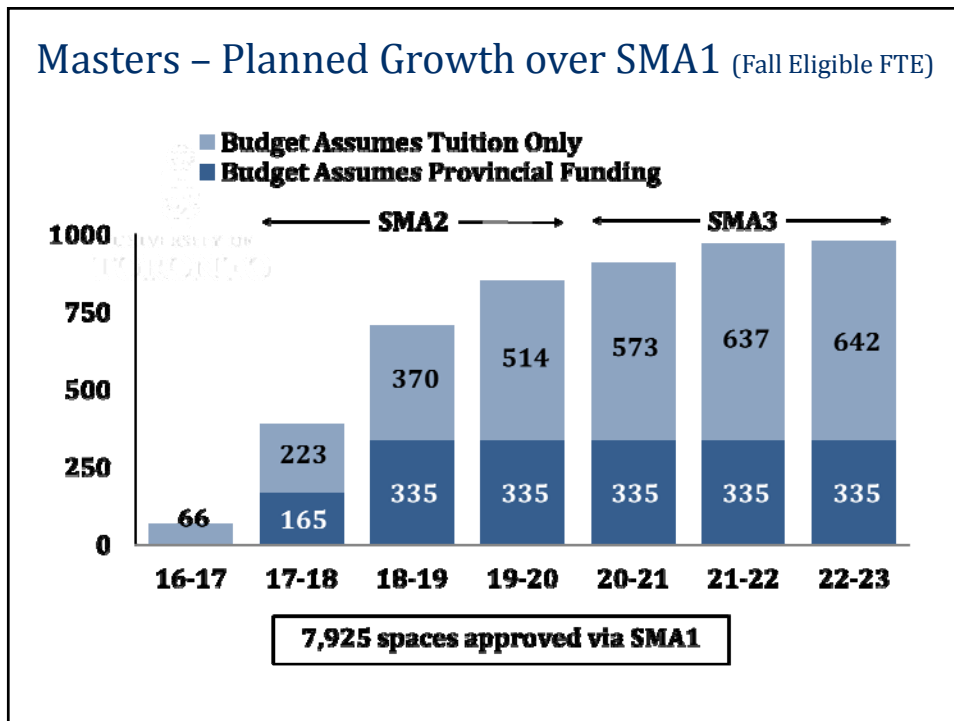
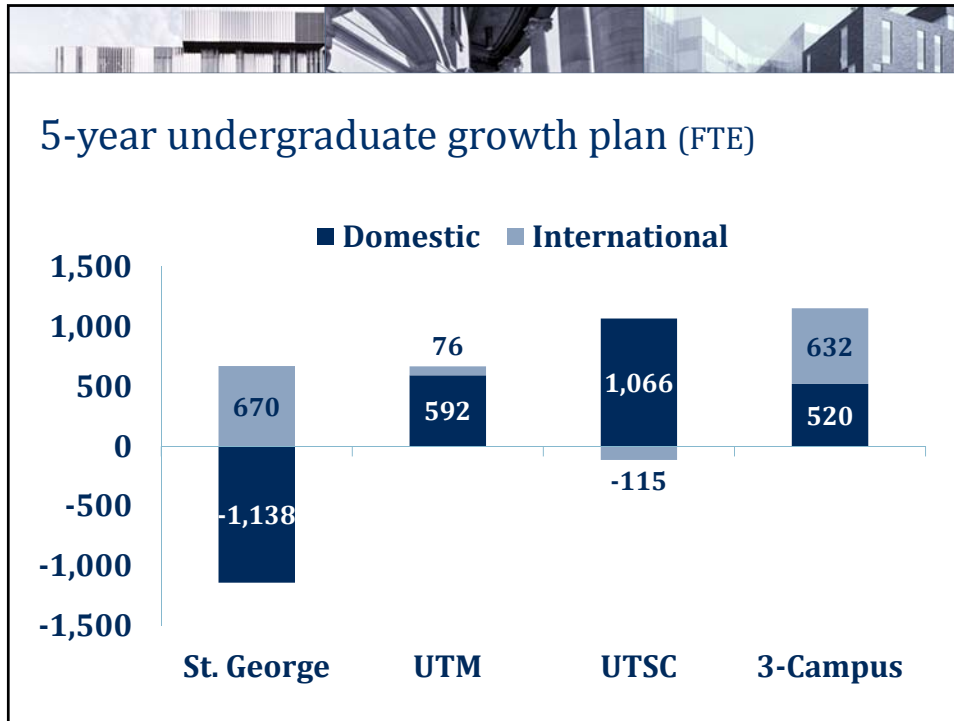
Direct Entry Undergraduate Program Applications					
2011	2012	2013	2014	2015	2016
67,600	71,500	73,900	75,700	75,500	n/a

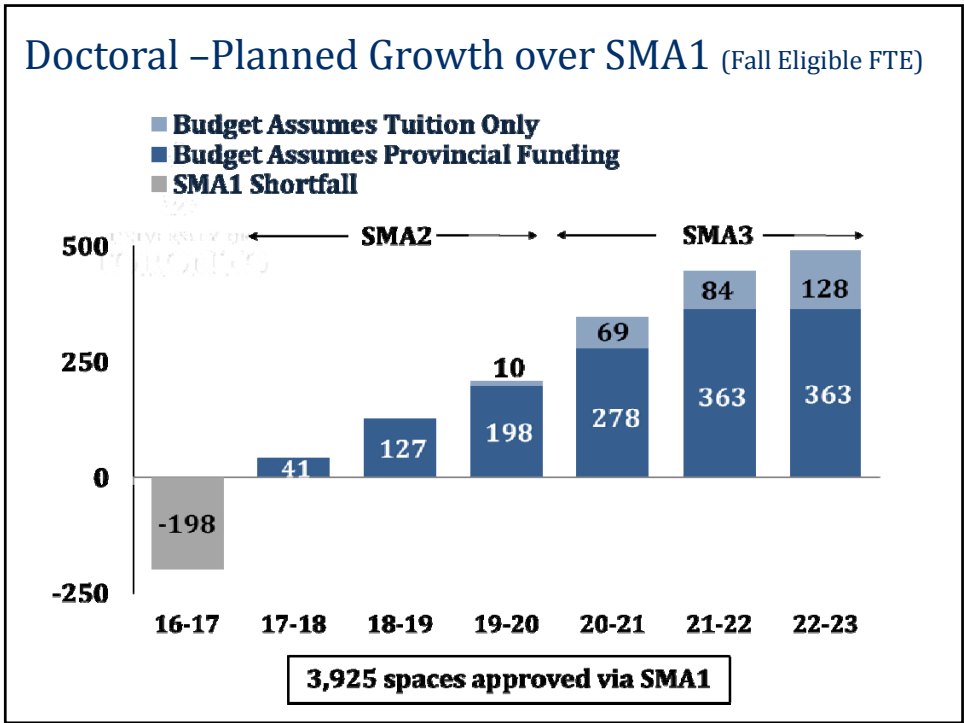


Divisional undergraduate international share in 2016



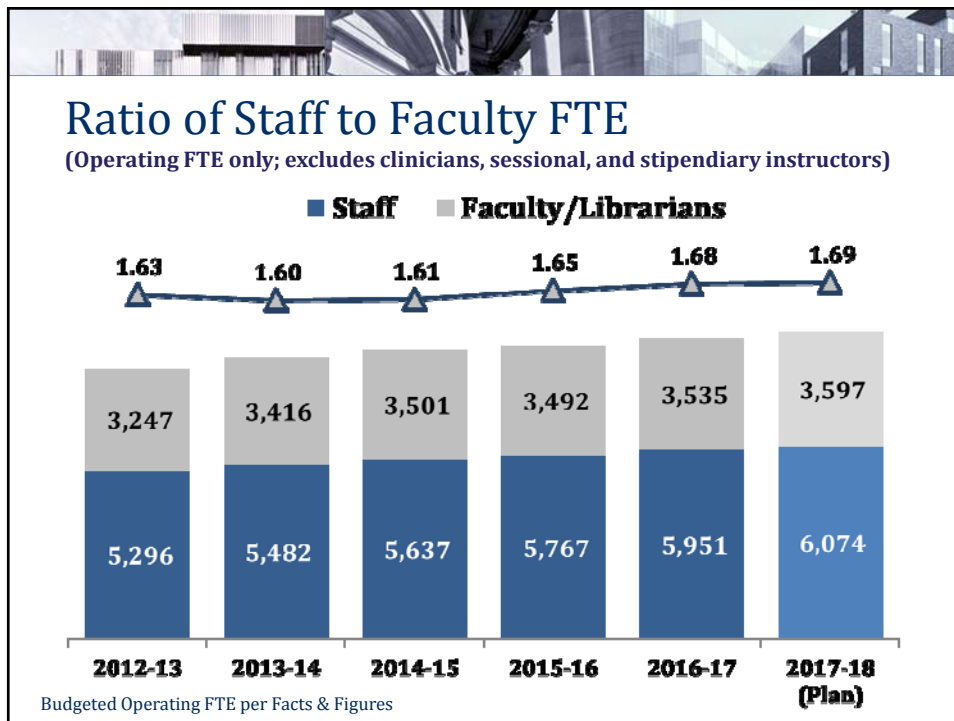
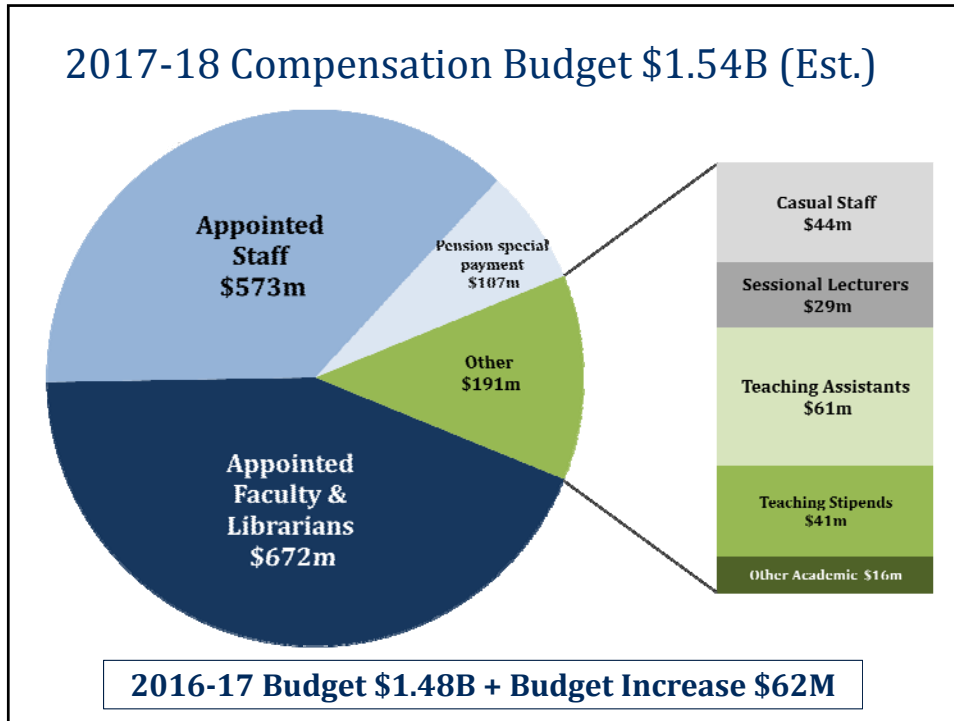
Total 2016 international UG students = 14,467





Faculty and Staff



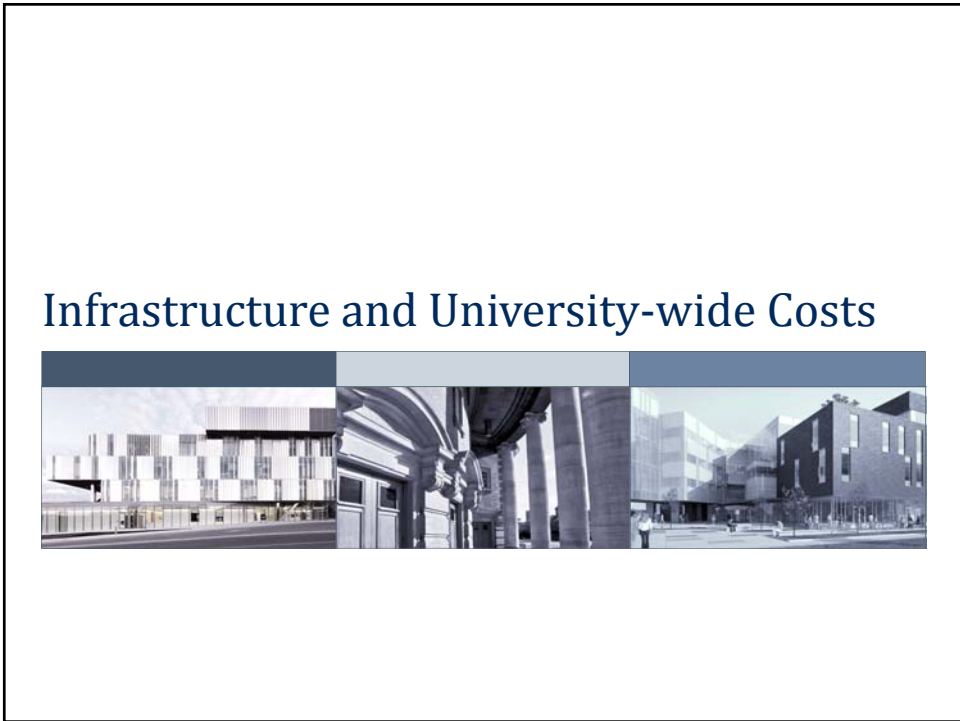


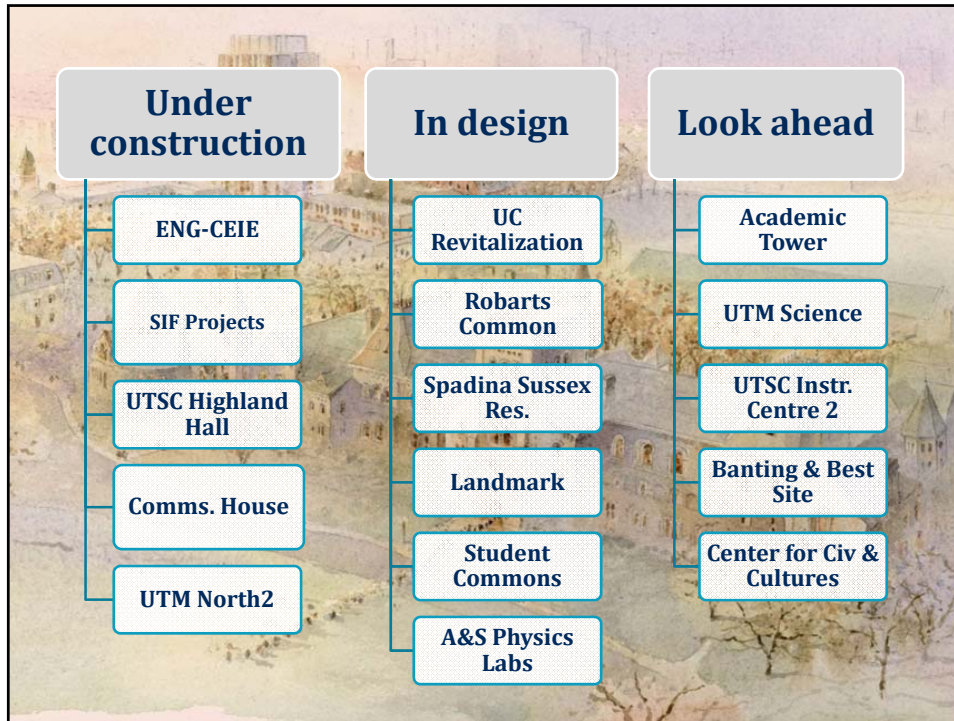


Pension special payments and other related costs

	Incremental Annual \$m	Total Annual \$m
2016-17	5	102
2017-18	5	107
2018-19	5	112
2019-20	5	117
2020-21	5	122
2021-22	5	127

} Placeholder



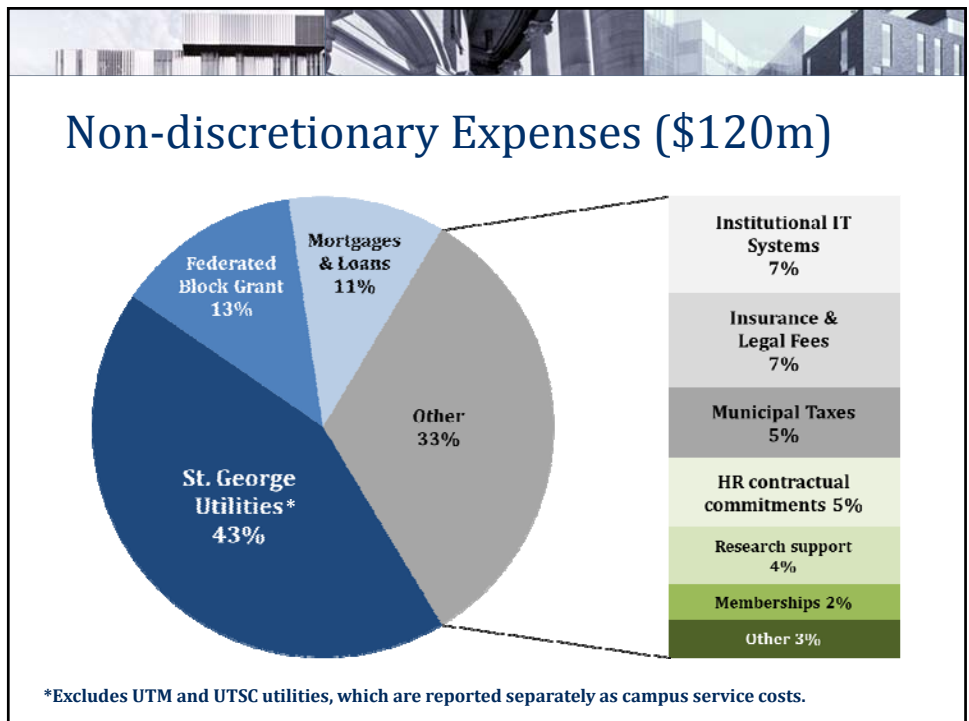
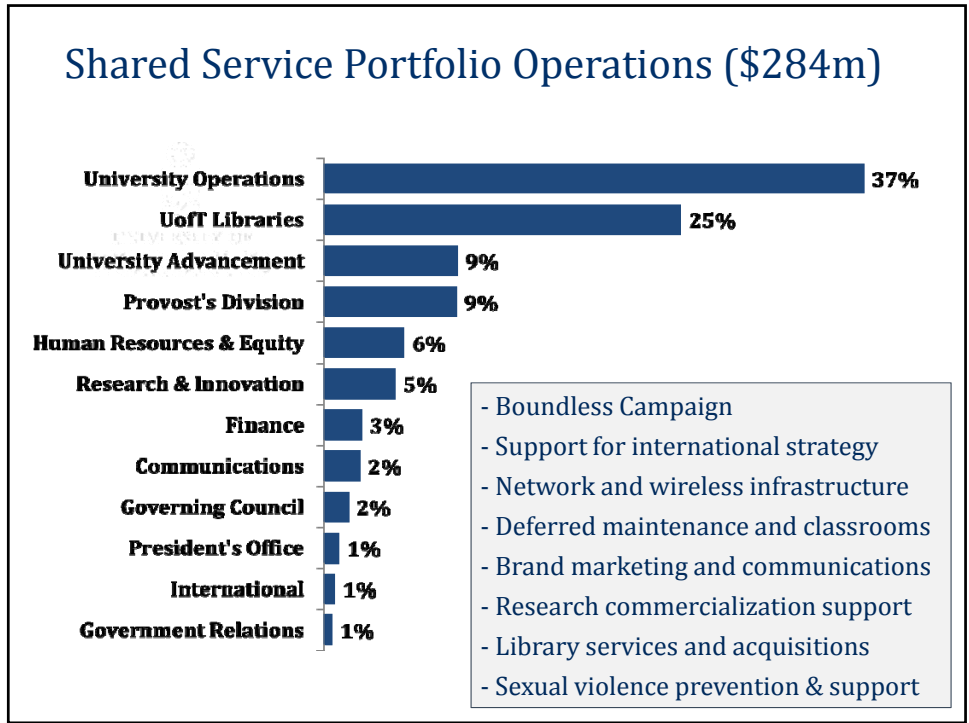


What makes up university-wide costs?

2017-18 University Wide Costs: \$552 million



UTM/UTSC spend an additional \$91m on campus services costs

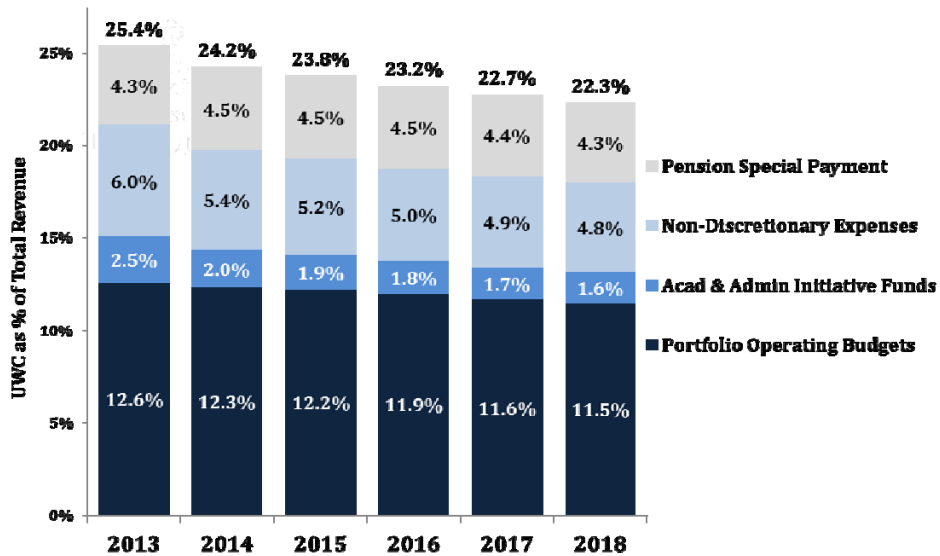


Academic and Administrative Initiative Funds (\$41m)

Funds held by various shared service portfolios to support institutional priorities; funds are distributed to academic and shared service divisions during the year, includes:

- *Graduate Expansion Incentive Fund*
- *Major Research Project Management Fund*
- *Instructional Technology Innovation Fund*
- *IT Initiatives Fund*
- *International Fund*
- *Administrative Priorities Fund*
- *Provost's Matching Fund*

University-wide costs as % of Revenue

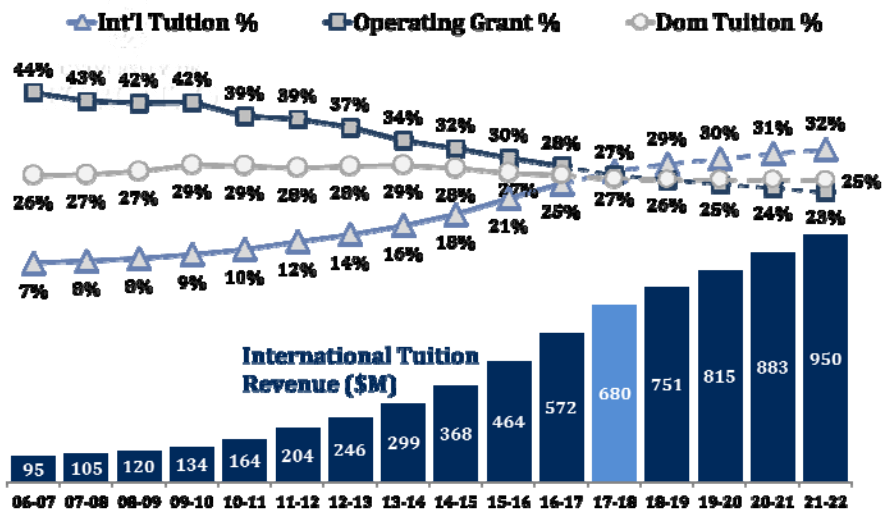


*Restated to report academic and administrative initiative funds in a single category

Funding Sources



The changing revenue landscape (excludes divisional income)

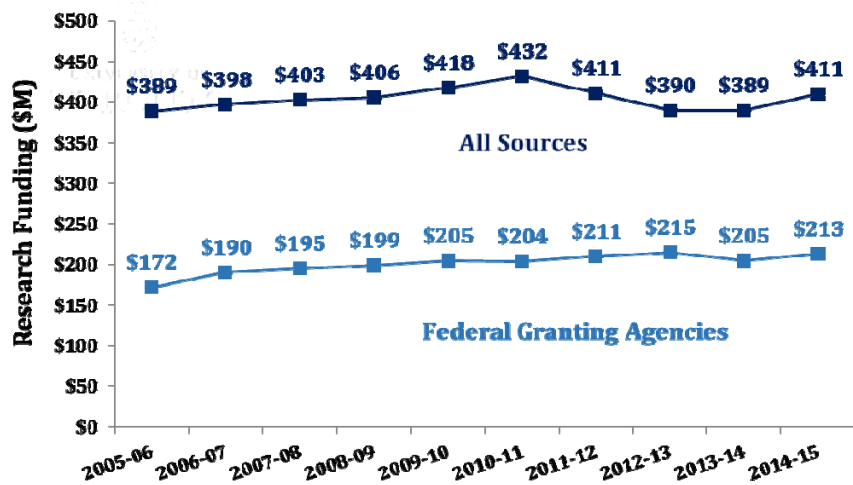


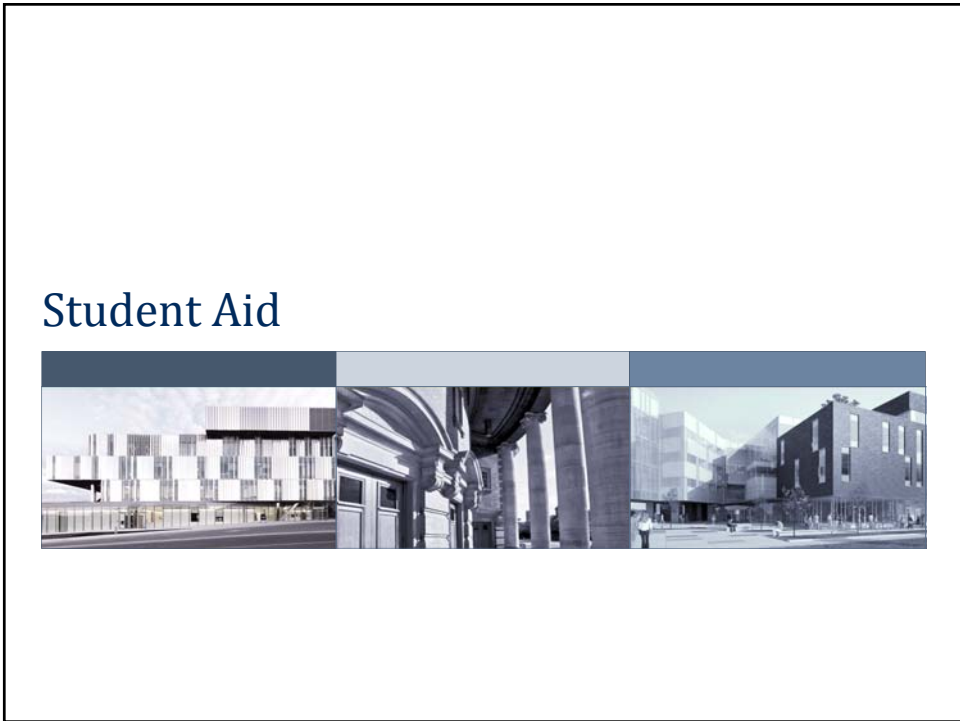
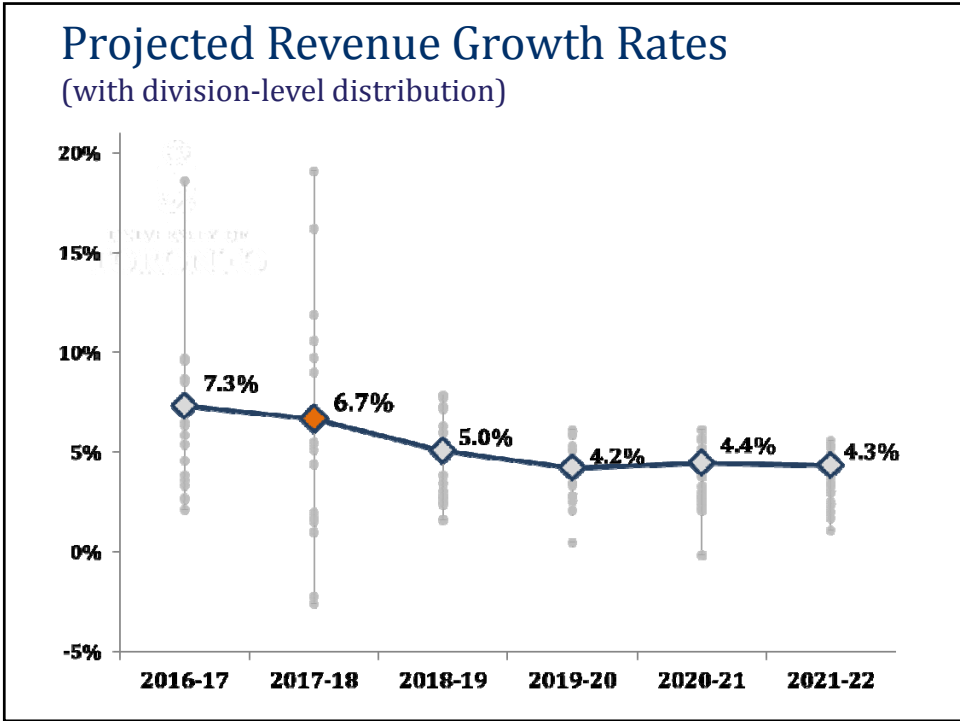
Provincial Tuition fee framework extended 2017-18 and 2018-19

(Domestic overall cap = 3%)	Incoming Students	Continuing Students
Domestic General UG	3%	3%
Domestic Prof and Graduate *	5%	5%

* Domestic tuition fee for doctoral stream will **decrease** by \$70

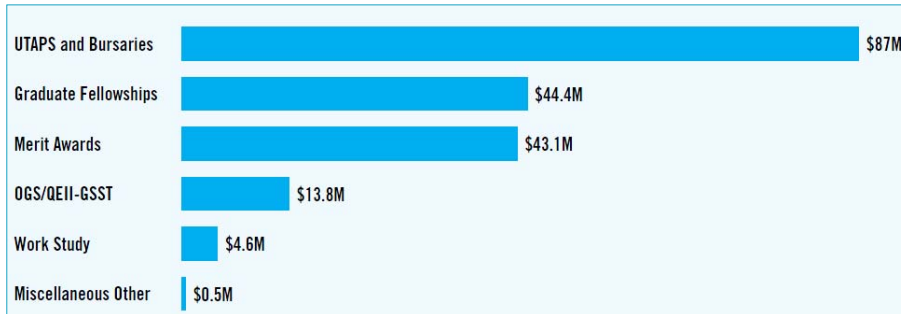
Research Funding (Excluding Hospitals) Total research including hospitals = \$1.1B





STUDENT AID EXPENSES

\$193 million in 2015-16

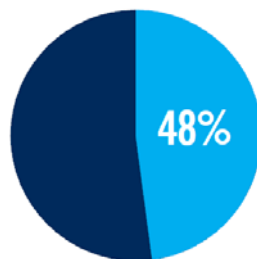


OSAP PARTICIPATION RATES

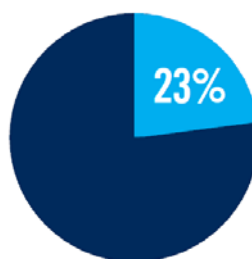
ALL

GRADUATE

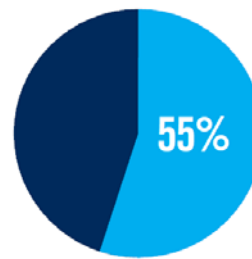
UG



29,517 students, or 48% of students across all divisions, received OSAP in 2015-16

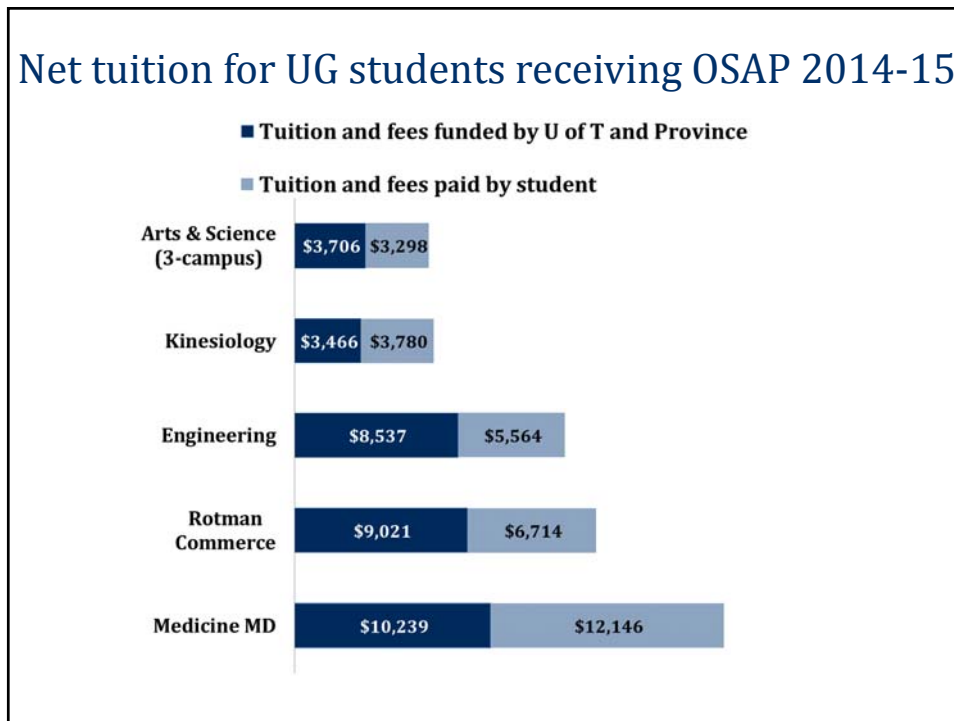
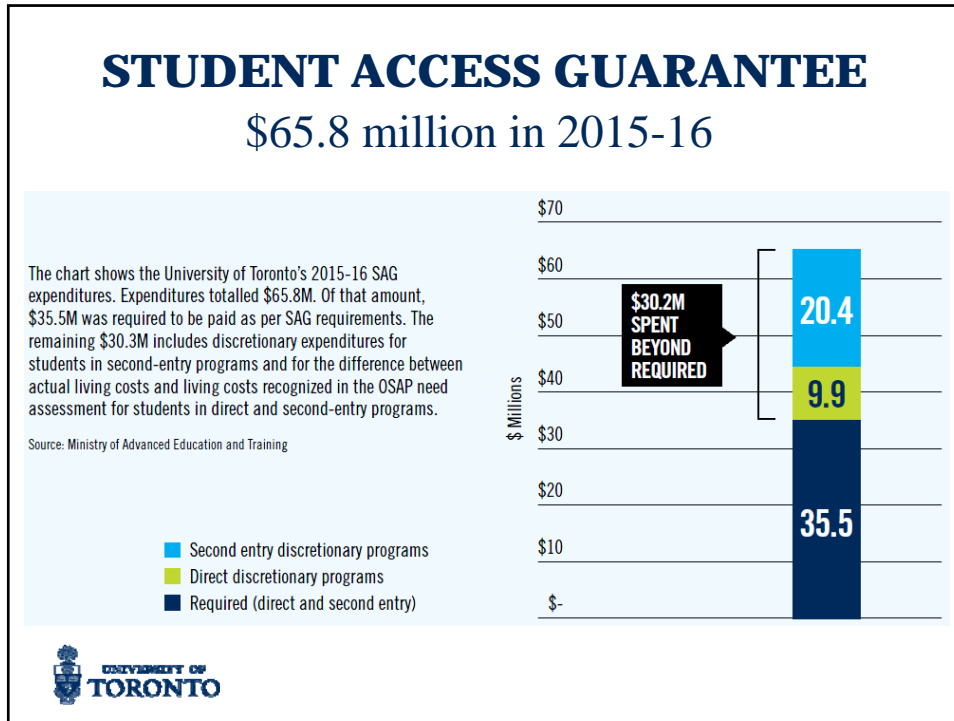


2,927, or 23% of all graduate students, received OSAP in 2015-16



26,590 students, or 55% of all undergraduates, received OSAP in 2015-16







Changes to Ontario Financial Aid

- Redesign of financial aid system (OSAP) will be good for students:
 - reduced complexity,
 - increased transparency
 - earlier decisions on available financial aid
- 2017-18 → consolidation of many provincial aid programs into one
- 2018-19 → introduction of net-tuition billing for students in “direct-entry” programs



University Fund



2017-18 UF \$18m: Advancing our Priorities

Undergraduate & International Experience TOTAL: \$3.8 million	Diversity and TRC-Related Supports TOTAL: \$4.95 million
<p>Int'l Recruitment & Student Mobility (Support Staff) \$1.5m base</p> <p>Wellness Counsellors \$1.3m base</p> <p>Undergraduate Research, WIL, Experiential Learning, Career Development \$1m OTO/year for 3 years</p>	<p>TRC Response-Related Faculty and Staff Hires \$2.5m base</p> <p>TYP Director \$200k base</p> <p>Indigenous Space Matching \$1.5m OTO</p> <p>Expansion of Academic Diversity Hires Program \$750k OTO/year for 3 years</p>

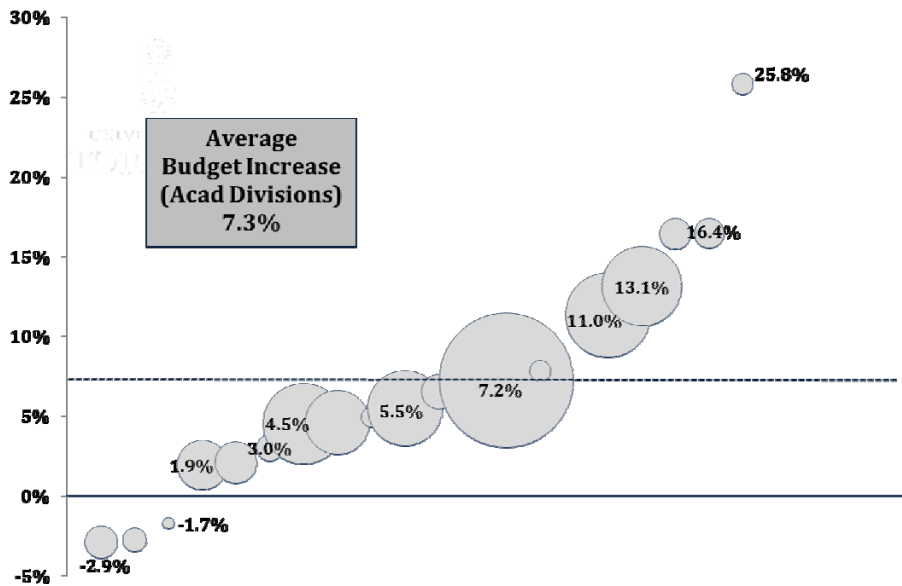
2017-18 UF \$18m: Advancing our Priorities

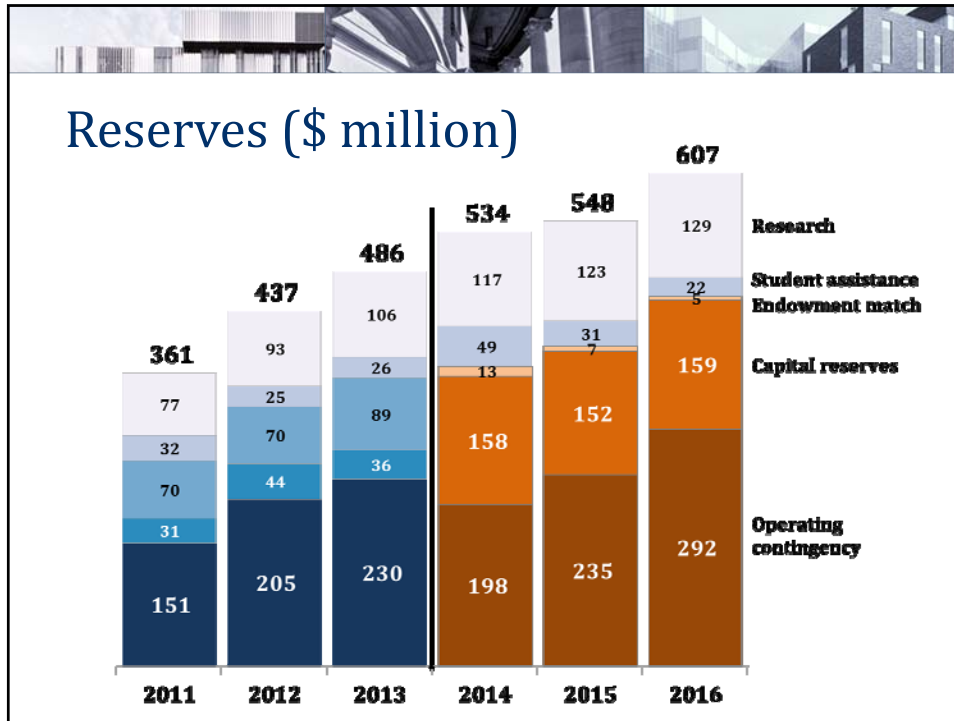
Cities Initiatives TOTAL: \$2.5 million	Structural Budget & Infrastructure TOTAL: \$7.1 million
<p>Support for cities research initiatives \$1.5m base</p> <p>St. George performance space renewal \$1m OTO</p>	<p>Structural budget reserve \$3.5m base</p> <p>ARCnet \$1.6m base</p> <p>Capital matching \$2.0m OTO</p>

Budget Summary - Opportunities and Risks








Variation in Growth of Divisional Expense Budgets (i.e. Revenue less University-wide Costs and Student Aid)





Key metrics are strong

-  **International rankings**
-  **Student employability**
-  **Entering averages**
-  **Credit ratings and debt ratio**
-  **Applications**

