



UNIVERSITY OF  
**TORONTO**

**ENROLMENT REPORT 2010-11**  
**ACTUAL AND PROJECTED ENROLMENT**

**Vice Provost Academic Operations**  
**February 2011**

# ENROLMENT REPORT 2010-11

## ACTUAL AND PROJECTED ENROLMENTS

### ***A. Preamble***

The Enrolment Report provides information for two purposes: it reports 2010-11 enrolments in various programs across the University, comparing actual results to enrolment plans; and it also lays out the enrolment projections for the period 2011-12 through to 2015-16. These projections form the basis for the revenue projections underlying the University's Long Range Budget Guidelines and the Budget Report.

### ***B. Background***

Enrolment planning has evolved significantly over the last two decades. In the late 1980s and 1990s it focused primarily on positioning the University's enrolment level within a funded enrolment "corridor" negotiated with the Ontario Government.

The Ontario Government negotiated enrolment funding levels for base operating grant with the Ontario Universities in 1989. This established a "corridor mid-point" for the University of Toronto that the University reached in 1990-91. At that point the University had the flexibility to allow its enrolment (expressed in BIUs) to fluctuate within a corridor of  $\pm 3\%$  of its mid-point with no effect on the operating grant it received. The University's enrolment planning for 1992-93 through 1995-96 took advantage of this flexibility by reducing enrolment while remaining within its corridor, thereby increasing the funding per FTE.

Over the past fifteen years the University participated in several programs to increase enrolment levels beyond those defined in the corridor. In the late 1990s the Government introduced a series of targeted funding envelopes, which allowed the University to grow in the areas of BEd, MD, computer science and high-demand engineering (ATOP). In 2000-01, the Ontario Government engaged in discussions with the Ontario universities regarding enrolment expansion to meet the demands of the "double-cohort". Full average funding for eligible undergraduate growth has been provided between 2000-01 and 2010-11. The Council of Ontario Universities is advocating for a provincial commitment to full funding of all undergraduate growth beyond 2010-11.

Funding was provided to support limited graduate growth between 2000-01 and 2004-05. In May of 2005, the Ontario Budget allocated \$220M for a major initiative to expand graduate enrolment in the Province by 14,000 students over 2002-03 levels. This initiative presented an excellent opportunity for the University of Toronto to restore its graduate/undergraduate mix and strengthen its research enterprise. In 2008 the Province announced revisions to the graduate expansion program, bringing the total planned number of expansion spaces to 15,300.

Section C below provides enrolment details for 2010-11, with comparisons of actual enrolments to initial plans. It also provides some data on enrolment history. Projections based on current University plans are given in Section D.

Overall, the data presented in the following sections show that the University's recruitment and enrolment management strategies are enabling us to achieve our enrolment plans.

### **C. 2010-11 Enrolment: Overview**

Table 1A provides overall headcount statistics from 2002-03 to 2015-16. There were 78,568 undergraduate and graduate students enrolled at the University of Toronto, including the Toronto School of Theology, in Fall 2010, an increase of 1,225 students over 2009-10.

Full-time-equivalent (FTE) numbers are provided in Table 1B, which includes a breakdown of undergraduate Arts & Science FTEs by field of study. Because many students graduate with specialists and/or majors in more than one field, this breakdown should not be viewed as a precise accounting. It is only indicative of broad trends.

Table 1B shows graduate professional masters FTEs by campus. Doctoral stream masters and PhD enrolments are totals across the three campuses. They are not displayed by campus because of the unitary administrative structure for these degree programs.

The University's enrolment history since 1977 is illustrated in Chart 1A. Over this period, enrolment has doubled from 33,389 to 66,611 FTEs. Chart 1B displays the undergraduate Arts & Science FTEs by campus and the graduate FTEs trends since 2000.

#### **C.1.1. Undergraduate Enrolment: 2010-11**

Undergraduate enrolment by division is given in Table 2A. In the first five years of the decade significant expansion took place while a much more modest increase has occurred since then, bringing the total student FTEs to 53,664 in 2010-11.

Student enrolment in 2010-11 is 297 FTEs (0.6%) above target. The number of undergraduate FTEs increased in almost all programs over 2009-10.

A significant number of students benefit from collaboration between the University of Toronto and other institutions. Table 2B shows that 2,018 (3.8%) of the University's undergraduate FTEs comprising 2,726 students study in programs offered jointly with external or affiliated institutions. In addition, 764 students came to the University of Toronto after studying at an Ontario College of Applied Arts and Technology.

Statistics for full-time new intake are provided in Table 3. Actual overall intake in Fall 2010 was 178 (1.2%) over planned levels.

Chart 2 shows the average grade for entering students in Arts & Science at the three campuses from 2006 to 2010. The average grade of the 2010-11 incoming class is 84.1%, which is slightly higher than the averages over the previous four years. Despite the significant increase in intake levels since 2002-03 (Table 3), the University has maintained the quality of its undergraduate Arts & Science student body.

### **C.1.2 Graduate Enrolment: 2010-11**

Information on graduate student enrolment is contained in Tables 4A-H. As part of the 2005 Spring Budget, the Ontario Government announced that by 2009-10 an additional \$220M would be made available to expand graduate enrolment in Ontario universities. This funding was intended to support a system-wide growth of 14,000 graduate spaces over 2002-03 levels. Initially, 12,000 spaces were allocated in June 2006 for expansion to be achieved by 2007-08.

The Provincial program presented an excellent opportunity for the University of Toronto to increase the number of graduate students and strengthen its research enterprise. The University undertook an extensive planning process, the results of which are described in a document entitled *A Framework for Graduate Expansion 2004-05 to 2009-10*. These plans were approved by Governing Council on December 14, 2006.

In Phase 1, the University of Toronto received approval from the Ministry to increase enrolment by up to 2,134 eligible student FTEs by 2007-08 relative to 2004-05 (Table 4G). The expansion envisioned in the Framework document was based on this allocation and on the University's academic plans at that time as developed by the heads of various graduate units.

Phase 2 was announced in February 2009. The University was allocated 2,722 spaces relative to 2004-05, comprised of 1,709 Masters and 1,013 PhDs. It was also announced that funding would be phased-in to 2011-12 with an additional two years, if necessary, to achieve the end-state targets.

Subsequent to the Phase 2 allocations and in response to increased Master's demand, especially Professional Masters, the University continued to advocate to the Ministry for increased flexibility or "fungibility" between the Masters and PhD pools. After a mid-program review of the graduate expansion initiative, the Ministry announced in December 2009 that it would provide a one-time opportunity for institutions to convert up to 50% of their remaining spaces that had yet to be realized as of 2007-08 between the two pools on a grant-neutral basis. The University of Toronto received permission to convert 263 PhD spaces to 500 additional Master's spaces. End-state targets are now 7,031 Masters and 3,853 PhDs, which represents growth relative to 2004-05 of 2,209 Masters and 750 PhDs (Table 4G). Table 4H provides the detailed breakdowns by faculty and funding pool.

Table 4A shows planned enrolments for 2010-11 as well as actual and projected enrolments for domestic and international students to 2015-16. A breakdown by degree category is given in Table 4B.

Overall graduate enrolment reached 13,745 FTEs in 2010-11, an increase of 279 FTEs, or 2.1%, over 2009-10. Table 4G shows that 10,473 FTEs are eligible for funding in 2010-11, representing an increase of 2,548 spaces relative to 2004-05. Table 4H shows that the University is currently 412 eligible FTEs below its approved allocation, comprised of 461 Masters below and 49 PhDs above the respective targets. The corresponding increase relative to 2002-03 is 2,968 eligible FTEs, which will be the basis for determining the amount of capital funding to be received from the government.

Detailed FTE enrolment breakdowns by faculty and degree are provided in Tables 4C-4F, including the planned targets for 2011-12 and beyond.

Chart 3 illustrates changes in graduate enrolment for different degree categories. Since 2002-03, enrolment in graduate professional masters programs has increased by almost two-thirds (65%), and doctoral enrolment has grown by 32%. At the same time, doctoral-stream Masters enrolment has increased by 8%.

### **C.1.3 Geographic Origin of Incoming Students: 2010-11**

Tables 5-9 address the geographic origin of incoming students. The composition of the student body by geographic origin and how it has changed since 2005-06 is given in Table 5A and Charts 4A & 4B. Table 5A shows that a large proportion of incoming undergraduate students, 66% in 2010-11, come from the Greater Toronto Area. Another 8% are from other areas in Ontario, 7% from other provinces in Canada and the remaining 19% from other countries. Of the incoming class of graduate students 63% is drawn from the GTA, 9% are from other areas in Ontario, 14% from other provinces in Canada, and 14% from other countries. Table 5B shows the Faculty/campus details.

### **C.1.4 International Enrolment: 2010-11**

International enrolment statistics are summarized in Table 6 and Charts 5A & 5B. The number of international students has been growing steadily since 1997-98 when they represented only 3.8% of the total student population. Today, 11.8% of the University of Toronto's students come from outside Canada. International students represent 11.8% of the undergraduate population and 11.5% of graduate students.

Table 7 shows trends in full-time intake. The total number of international students admitted has been steadily increasing, but there are significant year-to-year fluctuations in percentage increases because the numbers are small. Also, intake statistics are influenced by international events and changes in government funding.

In 2010-11, total international intake increased by 4.9% relative to the previous year, with an increase of 13.8% in graduate and an increase of 2.8% in undergraduate admissions. The slight decline in graduate intake compared to 2006-07 levels is largely attributable to the current emphasis on graduate domestic enrolment expansion for which full government funding is available.

Table 8 and Chart 6 illustrate the distribution of international students by geographic region. The University draws most of its international students from Asia and the Americas.

Table 9 displays international student enrolments by country of citizenship, focusing on the top fifteen countries. The top countries for undergraduate students are China (41%), South Korea (10%), United States (4%) and India (4%). For graduate students, the top countries are the United States (21%), China (18%), India (8%) and Iran (8%). International undergraduate students came from 146 countries while international graduate students came from 108 countries.

## **D. Projected Enrolment: 2011-12 to 2015-16**

### **D.1.1 Projected Undergraduate Enrolment**

Table 1B gives projected enrolments over the next five years. The University's plan is to increase its undergraduate enrolment by 635, reaching 54,299 FTEs by 2015-16. This is a result of a reduction of 1,067 in Arts & Science at St. George offset by increases of 304 at UTSC and 958 at UTM. Applied Science and Engineering is projected to reduce its undergraduate enrolment by 324 FTEs as part of a plan to rebalance its undergraduate/graduate mix. The number of students in professional faculties is projected to increase by 591 FTEs to 8,887 FTEs due to increases within several Medicine programs and the introduction of a Bachelors program in Architecture. OISE's plans include a Ministry-mandated reduction to BEd levels over the next two years.

By 2015-16, St. George Arts & Science intake will decrease to 5,299 full-time students, in accordance with its updated December 2009 plans. Intake at UTSC will be increased by 110 to 2,594 full-time students per annum while UTM plans will admit 3,020 full-time students, 150 more than its 2010-11 intake. There are no significant planned intake changes for the undergraduate professional programs beyond the mandated BEd reductions (Table 3).

### **D.2.1 Projected Graduate Enrolment**

The University's December 2006 *Framework for Graduate Expansion* envisioned an increase of 4,400 students relative to 2002-03, conditional on the availability of resources, including operating grant funding, capital funding and scholarships for student support. The end-state targets and enrolment projections in Tables 4A-4H have been updated to reflect the most recent review of divisional plans by the Provost.

Projections to 2015-16 (Tables 4A-4F) show that total FTE growth including international students is expected to continue to occur primarily within the professional masters and doctoral categories. The rapid growth in Professional Masters enrolments reflects the rising importance of these programs and the increased number of offerings at the University. The increase in doctoral students is indicative of the growing intensity of research and scholarship.

The University will continue to monitor funding availability to ensure that the quality of the graduate student experience is not affected due to lack of funding. Further adjustments to long-term enrolment plans will be made as necessary in order to ensure the above institutional end-state targets are met. The University and other institutions will continue advocacy efforts for the funding of a future Phase 3 of graduate enrolment expansion.

## **D. 3. Projected Undergraduate/Graduate Enrolment Balance**

Chart 7 illustrates how the changes in enrolment described above affect the institutional enrolment balance between undergraduate and graduate programs. In 2002-03, undergraduate enrolment represented 80% of the total student body, rising slowly as the undergraduate double cohort progressed towards graduation, and then dropping back to

80% in 2010-11 as a result of graduate expansion. Graduate students are projected to increase to 21.8% of the student population over the next five years.

#### **D. 4. Projected Domestic/International Mix**

Table 10 shows actual and planned enrolments for domestic and international students. Total undergraduate student FTEs are projected to increase by 635 by 2015-16 relative to 2010-11. This is comprised of a planned decrease of 775 domestic students and an increase of 1,410 international students. Graduate student growth of 1,388 FTEs is planned to be primarily domestic, with a modest growth of 268 FTEs in international students. Overall international enrolment will increase from 12.3% of the total FTE student population in 2010-11 to 14.4% by 2015-16.

#### **D. 5. Longer-term Enrolment Planning and Demand**

In June 2007, the President initiated a visioning exercise to develop long-term plans for the Year 2030. Five task forces were established to examine all aspects of the University, including long-term enrolment patterns. Their deliberations extended into the spring of 2008 and the resulting reports informed and guided a *Synthesis Report* prepared by the President. The process then culminated in *Towards 2030: A Long-Term Planning Framework* which identified strategic directions for the University of Toronto based on the *Synthesis Report*.

The *Framework* will help guide future academic planning at the institutional, divisional, and departmental levels. Following are some excerpts from the *Framework* in the areas of enrolment planning, institutional balance, and student recruitment.

- No enrolment decisions will be taken without careful consideration of the long-term implications for the University's self-defined role and aspirations. Enrolment planning will also consider all relevant financial implications and potential impacts on both the quality of the student experience and the quality of working life for faculty and staff.
- The University's enrolment strategies will reinforce its unique strengths in research and scholarship, as well as our acknowledged leadership position in graduate and second-entry professional education provincially and nationally.
- The University will support the continued development of three differentiated campuses under a single University-wide administration.
- The University will focus on the re-development and enhancement of its three primary campuses and will not develop a fourth campus or major satellite operations.
- The University acknowledges the goal of modest reductions in undergraduate enrolment on the St. George campus, along with continued growth in graduate education.
- The University acknowledges that UTM and UTSC envisage growth in a range of professional masters programs, along with doctoral stream expansion in selected

disciplines ... For undergraduate enrolment, the presumptive expansion across the two campuses combined is approximately 5000 places for students.

- The University affirms the importance of increasing its national and global presence by recruiting, respectively, more students from outside of the Toronto region and more students from abroad. These general goals ... will be balanced against the University's regional and provincial responsibilities.

## **D.6. Linking Enrolment Plans to Capital Plans**

Both UTM and UTSC have experienced unprecedented surges in enrolment over the last decade and are located in regions where significant future demand for growth is projected. The new KIP-funded Instructional buildings at each campus will begin to redress critical space shortages, however, further investments are required to accommodate future growth and improve outdated academic facilities. UTM is poised to grow to 13,000 and UTSC to 11,000 students by 2015-16. In the longer-term both campuses plan to grow to 21,000 students.

The St. George campus will increasingly reflect the shift in undergraduate demand towards engineering, sciences and specialized programs. The University also plans to expand its graduate enrolment further over the next five years to bring our total proportion of graduate students to a level more in line with other research-intensive international peers. With additional operating and capital funding from the Government the University could accommodate an additional 400 PhD and 750 masters spaces over the approved Phase 2 levels by 2015-16.

## ***Concluding Remarks***

The University of Toronto continues to attract a large number of very high-quality student applicants, both domestically and internationally, and to meet its enrolment targets. The enrolment report is intended to facilitate comprehensive monitoring of the University's progress towards its objectives.



## **E. Tables & Charts**

### **E. 1. Tables**

Table 1A:	Actual and Projected Enrolment (Total Fall Headcount)
Table 1B:	Actual and Projected Enrolment (Total FTEs) by Campus
Table 2A:	Actual and Projected Enrolment (Undergraduate Fall FTEs)
Table 2B:	Actual and Projected Enrolments with External and Affiliated Institutions
Table 3:	Actual and Projected Enrolment (Fall Full-time Headcount Intakes)
Table 4A:	Graduate Enrolment, FTE Distribution by Immigration Status
Table 4B:	Graduate Enrolment, FTE Distribution by Degree
Table 4C:	Actual and Projected Enrolment (Fall Total Graduate FTEs)
Table 4D:	Actual and Projected Enrolment (Fall Total PMAS FTEs)
Table 4E:	Actual and Projected Enrolment (Fall Total Doctoral-stream Masters FTEs)
Table 4F:	Actual and Projected Enrolment (Fall Total Doctoral-stream Doctoral FTEs)
Table 4G:	Graduate Enrolment, Eligible FTE Enrolments
Table 4H:	Graduate Enrolment, Eligible FTE Enrolments by Division
Table 5A:	Undergraduate and Graduate Intake by Geographic Origin
Table 5B:	Undergraduate and Graduate Intake by Geographic Origin (Fac/campus)
Table 6:	International Enrolment: Total Students
Table 7:	International Enrolment: Full-time Intake
Table 8:	International Student Headcount Enrolment by Geographic Region
Table 9:	International Student Headcount Enrolment by Country of Citizenship
Table 10:	Actual and Projected FTE Enrolments: Domestic/International Mix

### **E.2. Charts**

Chart 1A:	Total FTE Enrolment: 1977-78 to 2015-16
Chart 1B:	Total FTE Enrolment by Campus: 2000-01 to 2015-16
Chart 2:	Entering Grade Averages, Arts & Science by Campus
Chart 3:	Graduate Enrolment by Degree: 2002-03 to 2015-16
Chart 4A:	Undergraduate Intake by Geographic Origin: 2005-06 vs. 2010-11
Chart 4B:	Graduate Intake by Geographic Origin: 2005-06 vs. 2010-11
Chart 5A:	Total Enrolment and Proportion of International Enrolment: 1978 to 2015
Chart 5B:	International Enrolment as a Proportion of Total 2010-11
Chart 6:	International Students by Geographic Region 2010-11
Chart 7:	Enrolment Balance: 2002-03 to 2015-16

**Table 1A: Total Actual and Projected Headcount Enrolments**

Full-Time Headcount	2002-03	2004-05	2009-10	2010-11	2010-11	2010-11	2010-11	2010-11	2010-11	2011-12	2012-13	2013-14	2014-15	2015-16
	Actual	Actual	Actual	Plan Jan/10	Actual Nov/10	Variance to Plan	Variance to 2009-10	Plan	Projected	Plan	Projected			
St George, A&S	19,644	22,243	22,856	23,357	23,295	(62)	439	23,371	23,311	23,371	23,311	22,608	22,304	22,080
UTM	6,272	7,952	10,156	10,452	10,464	12	308	10,779	11,080	10,779	11,080	11,264	11,467	11,516
UTSC	5,993	7,891	9,454	9,448	9,398	(50)	(56)	9,424	9,552	9,424	9,552	9,744	9,790	9,802
Total Undergraduate Arts & Science	31,909	38,086	42,466	43,257	43,157	(100)	691	43,574	43,943	43,574	43,943	43,616	43,561	43,398
Total Undergraduate Other First-Entry	4,647	4,945	5,474	5,386	5,537	151	63	5,561	5,594	5,561	5,594	5,519	5,436	5,465
Total First-Entry	36,556	43,031	47,940	48,643	48,694	51	754	49,135	49,537	49,135	49,537	49,135	48,997	48,863
Total Undergraduate Professional	5,981	6,554	7,531	7,598	7,689	91	158	7,600	7,791	7,600	7,791	7,980	8,148	8,321
<b>TOTAL UNDERGRADUATE - UoFT</b>	<b>42,537</b>	<b>49,585</b>	<b>55,471</b>	<b>56,241</b>	<b>56,383</b>	<b>142</b>	<b>912</b>	<b>56,735</b>	<b>57,328</b>	<b>56,735</b>	<b>57,328</b>	<b>57,115</b>	<b>57,145</b>	<b>57,184</b>
Toronto School of Theology (TST)	294	296	263	281	259	(22)	(4)	281	281	281	281	281	281	281
<b>TOTAL UNDERGRADUATE</b>	<b>42,831</b>	<b>49,881</b>	<b>55,734</b>	<b>56,522</b>	<b>56,642</b>	<b>120</b>	<b>908</b>	<b>57,016</b>	<b>57,609</b>	<b>57,016</b>	<b>57,609</b>	<b>57,396</b>	<b>57,426</b>	<b>57,465</b>
Professional Masters	2,446	2,880	4,432	4,610	4,640	30	208	4,949	5,186	4,949	5,186	5,420	5,545	5,677
Doctoral Stream Masters	2,338	2,397	2,586	2,634	2,551	(83)	(35)	2,564	2,576	2,564	2,576	2,608	2,625	2,631
Doctoral Stream PHD	4,278	4,527	5,494	5,581	5,654	73	160	5,697	5,800	5,697	5,800	5,828	5,861	5,918
<b>TOTAL GRADUATE - UoFT</b>	<b>9,062</b>	<b>9,804</b>	<b>12,512</b>	<b>12,825</b>	<b>12,845</b>	<b>20</b>	<b>333</b>	<b>13,210</b>	<b>13,562</b>	<b>13,210</b>	<b>13,562</b>	<b>13,856</b>	<b>14,031</b>	<b>14,226</b>
Toronto School of Theology	245	283	339	338	351	13	12	345	338	345	338	338	343	344
<b>TOTAL GRADUATE</b>	<b>9,307</b>	<b>10,087</b>	<b>12,851</b>	<b>13,163</b>	<b>13,196</b>	<b>33</b>	<b>345</b>	<b>13,555</b>	<b>13,900</b>	<b>13,555</b>	<b>13,900</b>	<b>14,194</b>	<b>14,374</b>	<b>14,570</b>
<b>TOTAL FULL-TIME HEADCOUNT</b>	<b>52,138</b>	<b>59,968</b>	<b>68,585</b>	<b>69,685</b>	<b>69,838</b>	<b>153</b>	<b>1,253</b>	<b>70,571</b>	<b>71,509</b>	<b>70,571</b>	<b>71,509</b>	<b>71,590</b>	<b>71,800</b>	<b>72,035</b>

Part-Time Headcount	2002-03	2004-05	2009-10	2010-11	2010-11	2010-11	2010-11	2010-11	2010-11	2011-12	2012-13	2013-14	2014-15	2015-16
	Actual	Actual	Actual	Plan Jan/10	Actual Nov/10	Variance to Plan	Variance to 2009-10	Plan	Projected	Plan	Projected			
St George, A&S	3,843	3,686	3,192	3,480	3,043	(437)	(149)	3,480	3,480	3,480	3,480	3,480	3,480	3,480
UTM	846	842	891	844	1,007	163	116	900	900	900	900	900	900	900
UTSC	769	870	986	975	1,028	53	42	975	975	975	975	975	975	975
Total Undergraduate Arts & Science	5,458	5,398	5,069	5,299	5,078	(221)	9	5,355	5,355	5,355	5,355	5,355	5,355	5,355
Total Undergraduate Other First-Entry	347	423	905	880	1,010	130	105	951	972	951	972	992	1,012	1,012
Total First-Entry	5,805	5,821	5,974	6,179	6,088	(91)	114	6,306	6,327	6,306	6,327	6,347	6,367	6,367
Total Undergraduate Professional	2,061	218	187	213	195	(18)	8	219	220	219	220	218	217	217
<b>TOTAL UNDERGRADUATE - UoFT</b>	<b>7,866</b>	<b>6,039</b>	<b>6,161</b>	<b>6,392</b>	<b>6,283</b>	<b>(109)</b>	<b>122</b>	<b>6,525</b>	<b>6,547</b>	<b>6,525</b>	<b>6,547</b>	<b>6,565</b>	<b>6,584</b>	<b>6,584</b>
Toronto School of Theology	528	625	596	617	641	24	45	622	627	622	627	627	627	627
<b>TOTAL UNDERGRADUATE</b>	<b>8,394</b>	<b>6,664</b>	<b>6,757</b>	<b>7,009</b>	<b>6,924</b>	<b>(85)</b>	<b>167</b>	<b>7,147</b>	<b>7,174</b>	<b>7,147</b>	<b>7,174</b>	<b>7,192</b>	<b>7,211</b>	<b>7,211</b>
Professional Masters	2,061	1,807	1,636	1,624	1,448	(176)	(188)	1,437	1,481	1,437	1,481	1,515	1,507	1,516
Doctoral Stream Masters	380	357	256	256	256	-	-	277	277	277	277	285	285	290
Doctoral Stream PHD	94	100	72	67	73	6	1	69	57	69	57	48	43	41
<b>TOTAL GRADUATE - UoFT</b>	<b>2,535</b>	<b>2,264</b>	<b>1,964</b>	<b>1,947</b>	<b>1,777</b>	<b>(170)</b>	<b>(187)</b>	<b>1,783</b>	<b>1,815</b>	<b>1,783</b>	<b>1,815</b>	<b>1,850</b>	<b>1,835</b>	<b>1,847</b>
Toronto School of Theology	42	44	37	35	29	(6)	(8)	29	29	29	29	29	30	30
<b>TOTAL GRADUATE</b>	<b>2,577</b>	<b>2,308</b>	<b>2,001</b>	<b>1,982</b>	<b>1,806</b>	<b>(176)</b>	<b>(195)</b>	<b>1,812</b>	<b>1,844</b>	<b>1,812</b>	<b>1,844</b>	<b>1,879</b>	<b>1,865</b>	<b>1,877</b>
<b>TOTAL PART-TIME HEADCOUNT</b>	<b>10,971</b>	<b>8,972</b>	<b>8,758</b>	<b>8,991</b>	<b>8,730</b>	<b>(261)</b>	<b>(28)</b>	<b>8,959</b>	<b>9,018</b>	<b>8,959</b>	<b>9,018</b>	<b>9,071</b>	<b>9,076</b>	<b>9,088</b>
Total Undergraduate	51,225	56,545	62,491	63,531	63,566	35	1,075	64,163	64,783	64,163	64,783	64,588	64,637	64,676
Total Graduate	11,884	12,395	14,852	15,145	15,002	(143)	150	15,367	15,744	15,367	15,744	16,073	16,239	16,447
<b>TOTAL HEADCOUNT</b>	<b>63,109</b>	<b>68,940</b>	<b>77,343</b>	<b>78,676</b>	<b>78,568</b>	<b>(108)</b>	<b>1,225</b>	<b>79,530</b>	<b>80,527</b>	<b>79,530</b>	<b>80,527</b>	<b>80,661</b>	<b>80,876</b>	<b>81,123</b>

Table 1B: Total Actual and Projected FTE Enrollments by Campus

Total UoFT FTEs incl. TST (Fall)	2002-03	2004-05	2009-10	2010-11	2010-11	2010-11	2010-11	2010-11	2011-12	2012-13	2013-14	2014-15	2015-16
	Actual	Actual	Actual	Actual	Plan	Actual	%	Variance to Plan	Plan	Projected			
Arts & Humanities	6,611	7,276	7,972	7,884	21,550	21,533	100%	(17)	21,597	21,543	20,923	20,657	20,466
Social Sciences - Excl. BCOM	4,163	4,957	4,403	4,641		4,403	37%						
Social Sciences - BCOM (Yrs 2-4)	885	1,192	1,446	1,510		1,510	22%						
Life Sciences	2,520	3,271	2,918	2,795		2,795	7%						
Other Sciences	4,543	4,387	4,316	4,703		4,703	13%						
St George, A&S	18,722	21,082	21,054	21,533		21,533	22%	479	21,597	21,543	20,923	20,657	20,466
Arts & Humanities	2,316	2,852	3,158	3,142		3,142	34%	(16)					
Social Sciences - Excl. BCOM/BBA	1,685	2,130	2,712.0	2,792		2,792	30%	80					
Social Sciences - BCOM/BBA (Yrs 2-4)	406	584	914.0	967		967	10%	53					
Life Sciences	358	500	710	678		678	7%	(32)					
Other Sciences	891	1,230	1,588	1,709		1,709	18%	122					
UTM	5,657	7,295	9,081	9,289		9,289	100%	(67)	9,614	9,874	10,034	10,208	10,247
Arts & Humanities	1,409	1,699	1,673	1,729		1,729	20%	57					
Social Sciences - Excl. BBA	1,471	2,079	3,075	2,942		2,942	34%	(133)					
Social Sciences - BBA (Yrs 1-4)	792	1,124	1,566	1,460		1,460	17%	(107)					
Life Sciences	608	1,040	1,084	1,067		1,067	12%	(17)					
Other Sciences	1,284	1,286	1,241	1,421		1,421	16%	180					
UTSC	5,564	7,228	8,639	8,584		8,584	100%	35	8,588	8,702	8,871	8,912	8,923
Total Undergraduate Arts & Science	29,942	35,605	38,774	39,490		39,441		(49)	39,799	40,119	39,828	39,777	39,636
Total Undergraduate Other First-Entry	4,799	5,105	5,816	5,640		5,927		287	5,879	5,911	5,833	5,748	5,775
Total First-Entry	34,741	40,710	44,589	45,129		45,368		239	45,678	46,030	45,661	45,525	45,411
Total Undergraduate Professional	6,443	6,691	7,697	7,786		7,858		72	7,774	7,952	8,123	8,275	8,433
<b>TOTAL UNDERGRADUATE - UoFT</b>	<b>41,184</b>	<b>47,402</b>	<b>52,286</b>	<b>52,915</b>		<b>53,226</b>		<b>311</b>	<b>53,452</b>	<b>53,981</b>	<b>53,784</b>	<b>53,800</b>	<b>53,844</b>
Toronto School of Theology	437	476	429	452		438		(14)	453	454	454	454	454
<b>TOTAL UNDERGRADUATE</b>	<b>41,620</b>	<b>47,878</b>	<b>52,715</b>	<b>53,367</b>		<b>53,664</b>		<b>297</b>	<b>53,905</b>	<b>54,436</b>	<b>54,238</b>	<b>54,254</b>	<b>54,299</b>
St. George	2,897	3,242	4,612	4,777		4,742		(36)	5,011	5,232	5,447	5,558	5,682
UTM	168	180	255	263		281		18	309	335	359	371	382
UTSC			61	57		53		(4)	60	64	68	68	68
Professional Masters	3,064	3,422	4,928	5,097		5,076		(21)	5,380	5,630	5,875	5,997	6,132
Doctoral Stream Masters	2,453	2,504	2,666	2,711		2,630		(81)	2,647	2,659	2,694	2,711	2,718
Doctoral Stream PHD	4,307	4,559	5,522	5,601		5,679		78	5,718	5,817	5,842	5,874	5,930
<b>TOTAL GRADUATE - UoFT</b>	<b>9,824</b>	<b>10,485</b>	<b>13,116</b>	<b>13,409</b>		<b>13,385</b>		<b>(24)</b>	<b>13,745</b>	<b>14,107</b>	<b>14,411</b>	<b>14,582</b>	<b>14,780</b>
Toronto School of Theology	258	296	350	349		360		11	354	347	347	352	353
<b>TOTAL GRADUATE</b>	<b>10,082</b>	<b>10,782</b>	<b>13,466</b>	<b>13,758</b>		<b>13,745</b>		<b>(13)</b>	<b>14,099</b>	<b>14,453</b>	<b>14,758</b>	<b>14,934</b>	<b>15,133</b>
St. George excl. TST	39,619	43,184	47,366	48,065		48,369		305	48,627	49,113	48,862	48,822	49,004
UTM	5,825	7,475	9,336	9,618		9,570		(49)	9,922	10,209	10,393	10,579	10,629
UTSC	5,564	7,228	8,700	8,641		8,672		31	8,648	8,765	8,939	8,980	8,991
<b>TOTAL COMBINED FTEs - UoFT</b>	<b>51,008</b>	<b>57,887</b>	<b>65,402</b>	<b>66,324</b>		<b>66,611</b>		<b>287</b>	<b>67,197</b>	<b>68,088</b>	<b>68,195</b>	<b>68,381</b>	<b>68,624</b>
Toronto School of Theology	694	772	779	800		798		(2)	807	801	801	806	807
<b>TOTAL COMBINED FTEs</b>	<b>51,702</b>	<b>58,659</b>	<b>66,181</b>	<b>67,124</b>		<b>67,409</b>		<b>285</b>	<b>68,004</b>	<b>68,889</b>	<b>68,996</b>	<b>69,188</b>	<b>69,432</b>

**Table 2A: Undergraduate Actual and Projected Enrolment by Division**

**Total UofT FTEs plus TST (Fall)**

UNDERGRADUATE	2002-03 Actual	2004-05 Actual	2009-10 Actual	2010-11 Plan Jan/10	2010-11 Actual Nov/10	2010-11 Variance to Plan	2010-11 Variance to 2009-10	2011-12 Plan	2012-13 Projected	2013-14	2014-15	2015-16
St George, A&S	18,722	21,082	21,054	21,550	21,533	(17)	479	21,597	21,543	20,923	20,657	20,466
UTM	5,564	7,228	9,081	9,355	9,289	(67)	208	9,614	9,874	10,034	10,208	10,247
UTSC	5,657	7,295	8,639	8,584	8,619	35	(20)	8,588	8,702	8,871	8,912	8,923
<b>Total Arts &amp; Science</b>	<b>29,942</b>	<b>35,605</b>	<b>38,774</b>	<b>39,490</b>	<b>39,441</b>	<b>(49)</b>	<b>667</b>	<b>39,799</b>	<b>40,119</b>	<b>39,828</b>	<b>39,777</b>	<b>39,636</b>
ApSc&Eng	3,848	4,056	4,592	4,411	4,628	217	35	4,529	4,477	4,404	4,303	4,303
PE&H	395	485	611	629	625	(5)	13	690	748	763	790	813
Music incl. ACP & DOP	453	442	499	498	523	25	24	536	562	542	531	535
TYP	102	122	113	101	152	51	39	124	124	124	124	124
<b>Total First-Entry</b>	<b>34,741</b>	<b>40,710</b>	<b>44,589</b>	<b>45,129</b>	<b>45,368</b>	<b>239</b>	<b>778</b>	<b>45,678</b>	<b>46,030</b>	<b>45,661</b>	<b>45,525</b>	<b>45,411</b>
Architecture	1								85	179	265	350
Dentistry - DDS incl. DPP phase-in 2006-07	281	275	319	316	319	3	-	320	320	318	316	316
Dentistry - DQP up to 2005-06, Residents	65	63	14	13	13	(1)	(1)	13	13	13	13	13
Law	530	601	623	662	640	(22)	17	653	647	650	650	650
Medicine - MD	766	786	904	936	928	(8)	24	963	1,000	1,038	1,051	1,051
Medicine - Rad Sciences	331	382	385	401	389	(13)	3	393	398	401	401	401
Medicine - Physician Assistant				21	18	(3)	18	33	38	47	47	47
Medicine - OT & PT (converted to Prof. Masters)	63	1										
Medicine - Postgraduate Residents	1,864	2,099	2,687	2,687	2,780	93	93	2,879	2,999	3,050	3,103	3,166
Nursing incl. CNPP	186	313	325	340	331	(9)	6	330	342	347	347	347
OISE/UT - BEd/Tech Ed	1,666	1,278	1,295	1,273	1,296	24	1	1,060	979	954	959	969
Pharmacy - BSCP	588	769	1,020	1,014	1,010	(3)	(10)	1,001	999	996	993	993
Pharmacy - PharmD, Residents	10	47	56	53	61	9	6	61	62	61	61	61
Woodsworth Certificates	91	79	68	70	73	2	4	69	69	69	69	69
<b>Total Undergraduate Professional</b>	<b>6,443</b>	<b>6,691</b>	<b>7,697</b>	<b>7,786</b>	<b>7,858</b>	<b>72</b>	<b>162</b>	<b>7,774</b>	<b>7,952</b>	<b>8,123</b>	<b>8,275</b>	<b>8,433</b>
<b>TOTAL UNDERGRADUATE - U of T</b>	<b>41,184</b>	<b>47,402</b>	<b>52,286</b>	<b>52,915</b>	<b>53,226</b>	<b>311</b>	<b>940</b>	<b>53,452</b>	<b>53,981</b>	<b>53,784</b>	<b>53,800</b>	<b>53,844</b>
Total Toronto School of Theology (TST)	437	476	429	452	438	(14)	9	453	454	454	454	454
<b>TOTAL UNDERGRADUATE</b>	<b>41,620</b>	<b>47,878</b>	<b>52,715</b>	<b>53,367</b>	<b>53,664</b>	<b>297</b>	<b>949</b>	<b>53,905</b>	<b>54,436</b>	<b>54,238</b>	<b>54,254</b>	<b>54,299</b>

**Table 2B: Undergraduate Enrolments with External and Affiliated Institutions**

**Total UofT FTEs plus TST (Fall)**

UNDERGRADUATE	2000-01 Actual (Note 5)	%	2009-10 Actual	%	2010-11 Plan Jan/10	2010-11 Actual Nov/10	%	2010-11 Variance to Plan	2010-11 Variance to 2009-10	2011-12 Plan	2012-13 Projected	2013-14	2014-15	2015-16	%
CCIT			440		477	454		(23)	14	471	458	469	474	473	
Visual Studies (Note 4)			52			41		(11)		38	38	44	44	44	
Art & Art History	120		284		275	277		(6)		278	284	274	279	281	
Theatre & Drama	92		82		84	85		1	3	78	78	76	75	75	
<b>UTM/Sheridan Programs</b>	<b>212</b>		<b>858</b>		<b>835</b>	<b>857</b>		<b>22</b>	<b>(1)</b>	<b>865</b>	<b>858</b>	<b>863</b>	<b>872</b>	<b>873</b>	
Environmental Science & Technology			6		4	1		(3)	(5)	5	10	13	13	13	
Industrial Microbiology			31		31	27		(4)	(3)	22	20	24	24	24	
Journalism			104		98	99		0	(6)	94	106	110	110	110	
New Media			67		76	83		7	15	76	79	79	79	79	
Paramedicine			92		106	107		1	15	106	108	113	113	113	
<b>UTSC/Centennial Programs</b>			<b>301</b>		<b>315</b>	<b>317</b>		<b>2</b>	<b>16</b>	<b>302</b>	<b>322</b>	<b>339</b>	<b>338</b>	<b>338</b>	
Nuclear Medicine	48		108		111	115		4	7	115	122	123	123	123	
Radiation Therapy	124		159		175	152		(23)	(7)	152	151	153	153	153	
Radiological Technology	34		119		115	122		6	3	127	126	126	126	126	
<b>Medicine/Michener Institute Radiation Science Programs</b>	<b>206</b>		<b>385</b>		<b>401</b>	<b>389</b>		<b>(13)</b>	<b>3</b>	<b>393</b>	<b>398</b>	<b>401</b>	<b>401</b>	<b>401</b>	
<b>Medicine/Michener/NOSM Physician Assistant</b>					<b>21</b>	<b>18</b>		<b>(3)</b>	<b>18</b>	<b>33</b>	<b>38</b>	<b>47</b>	<b>47</b>	<b>47</b>	
<b>Toronto School of Theology (TST)</b>	<b>436</b>		<b>429</b>		<b>452</b>	<b>438</b>		<b>(14)</b>	<b>9</b>	<b>453</b>	<b>454</b>	<b>454</b>	<b>454</b>	<b>454</b>	
<b>ENROLMENTS WITH EXTERNAL INSTITUTIONS (Note 2)</b>	<b>854</b>	<b>2.3%</b>	<b>1,972</b>	<b>3.7%</b>	<b>2,024</b>	<b>2,018</b>	<b>3.8%</b>	<b>(6)</b>	<b>46</b>	<b>2,046</b>	<b>2,071</b>	<b>2,105</b>	<b>2,113</b>	<b>2,114</b>	<b>3.9%</b>
A&S St. George/Seneca Liberal Arts Program (Note 1, 3)			7	0.0%		20	0.0%		13						
Remainder who applied from Ontario CAATs (Note 3)	184	0.5%	556	1.1%		546	1.0%		(10)						
Remaining students in UofT-only programs	36,080	97.2%	50,180	95.2%		51,080	95.2%		900						
<b>ENROLMENTS UofT-ONLY PROGRAMS</b>	<b>36,263</b>	<b>97.7%</b>	<b>50,742</b>	<b>96.3%</b>	<b>51,342</b>	<b>51,646</b>	<b>96.2%</b>	<b>304</b>	<b>904</b>	<b>51,859</b>	<b>52,365</b>	<b>52,133</b>	<b>52,141</b>	<b>52,185</b>	<b>96.1%</b>
<b>TOTAL UNDERGRADUATE</b>	<b>37,117</b>	<b>100.0%</b>	<b>52,715</b>	<b>100.0%</b>	<b>53,367</b>	<b>53,664</b>	<b>100.0%</b>	<b>297</b>	<b>949</b>	<b>53,905</b>	<b>54,436</b>	<b>54,238</b>	<b>54,254</b>	<b>54,299</b>	<b>100.0%</b>

Note 1: Arts & Science St. George and Seneca College's Liberal Arts Program initiated a transfer pilot project as of 2008-09, although once accepted at UofT these students are not being tracked separately within UofT's enrolment and revenue projection models. After-the-fact actuals can be reported using the enrolment count files.

Note 2: 2,726 students generated the 2,018 FTEs reported for external and affiliated institutions in 2010-11.

Note 3: An additional 764 students totalling 566 FTEs in 2010-11 applied from Ontario Colleges of Applied Arts & Technology and then registered in UofT-only programs.

Note 4: The Specialist in Visual Culture and Communications was previously reported under CCIT. Due to a reorganization, this program is now listed under Visual Studies. There has been no change in UTM's relationship with Sheridan CAAT.

Note 5: 2000-01 is prior to the start of the joint UTM/Sheridan CCIT program (2001-02) and the joint UTSC/Centennial College programs (2003-04).

**Table 3: Undergraduate Full-time New Intake/Year 1 Enrolments by Division**

**Fall Headcount Enrolments**

UNDERGRADUATE	2002-03 Actual	2003-04 Actual (Note 2)	2004-05 Actual	2009-10 Actual	2010-11 Plan Jan/10	2010-11 Actual Nov/10	2010-11 Variance to Plan	2010-11 Variance to 2009-10	2011-12 Plan	2012-13 Projected	2013-14	2014-15	2015-16
St George, A&S (Note 4)	5,452	5,794	5,683	6,061	5,599	5,517	(82)	(544)	5,499	5,399	5,299	5,299	5,299
UTM	2,101	2,651	2,176	2,770	2,852	2,870	18	100	2,948	2,966	2,984	3,002	3,020
UTSC	2,138	2,739	2,420	2,498	2,484	2,521	37	23	2,594	2,594	2,594	2,594	2,594
<b>Total Arts &amp; Science (New Intake + IFP)</b>	<b>9,691</b>	<b>11,184</b>	<b>10,279</b>	<b>11,329</b>	<b>10,935</b>	<b>10,908</b>	<b>(27)</b>	<b>(421)</b>	<b>11,041</b>	<b>10,959</b>	<b>10,877</b>	<b>10,895</b>	<b>10,913</b>
ApSc&Eng (Year 1) (Note 4)	1,035	1,214	1,073	1,206	1,099	1,247	148	41	1,120	1,120	1,120	1,120	1,120
PE&H (Year 1)	118	147	138	229	175	179	4	(50)	200	225	225	225	225
Music (Year 1)	114	117	115	151	115	126	11	(25)	126	126	126	126	126
TYP (All students)	73	66	67	64	62	89	27	25	70	70	70	70	70
<b>Total First-Entry (Year 1/New Intake)</b>	<b>11,031</b>	<b>12,728</b>	<b>11,672</b>	<b>12,979</b>	<b>12,386</b>	<b>12,549</b>	<b>163</b>	<b>(430)</b>	<b>12,557</b>	<b>12,500</b>	<b>12,418</b>	<b>12,436</b>	<b>12,454</b>
Architecture										100	120	130	140
Dentistry - DDS incl. DPP as of 2006-07	72	67	69	91	92	93	1	2	94	94	94	94	94
Dentistry - DQP up to 2005-06, Residents	40	38	38	14	13	13	-	(1)	13	13	13	13	13
Law	180	180	180	196	196	193	(3)	(3)	196	196	196	196	196
Medicine MD	198	200	199	225	250	250	-	25	259	259	259	259	259
Medicine Radiation Sciences	132	132	134	123	130	127	(3)	4	130	130	130	130	130
Medicine Physician Assistant (Note 3)													
Nursing incl. CNPP	134	156	158	174	166	164	(2)	(10)	171	176	176	176	176
OISE/UT - BE/TECH Ed	1,261	1,242	1,273	1,287	1,268	1,272	4	(15)	1,060	979	954	959	969
Pharmacy - BSCP	179	189	200	242	240	242	2	-	240	240	240	240	240
Pharmacy - PharmD, Residents	6	40	36	40	37	45	8	5	42	42	42	42	42
Woodsworth Certificates	17	36	43	37	35	43	8	6	35	35	35	35	35
<b>Total Undergraduate Professional (Year 1)</b>	<b>2,219</b>	<b>2,280</b>	<b>2,330</b>	<b>2,429</b>	<b>2,427</b>	<b>2,442</b>	<b>15</b>	<b>13</b>	<b>2,240</b>	<b>2,264</b>	<b>2,259</b>	<b>2,274</b>	<b>2,294</b>
<b>Total TST (delete?)</b>	<b>13,250</b>	<b>15,008</b>	<b>14,002</b>	<b>15,408</b>	<b>14,813</b>	<b>14,991</b>	<b>178</b>	<b>(417)</b>	<b>14,797</b>	<b>14,764</b>	<b>14,677</b>	<b>14,710</b>	<b>14,748</b>
<b>TOTAL FULL-TIME YEAR 1/NEW INTAKE</b>													

Note 1: For direct-entry programs, the new intake numbers provided in the table include new intake into upper years. For professional programs, the table provides full-time Year 1 enrolment.

Note 2: 2003-04 was the primary year of accommodating the undergraduate "double cohort" from Ontario secondary schools.

Note 3: The Physician Assistant Education Program admits students in the Winter. Its revised planned intake for 2010-11 is 15 rising to 24 for 2011-12 onwards.

Note 4: Arts & Science St. George and Applied Science targets include students transferring from the prior year part-time International Foundation Programs (IFP) into full-time Year 1.

**Table 4A, Graduate Enrolment, FTE Distribution by Immigration Status**

**Fall Full-time Equivalent (FTE) Enrolments**

	2002-03 Actual	2004-05 Actual	2009-10 Actual	2010-11 Plan Jan/10	2010-11 Actual Nov/10	2010-11 Variance to Plan	2010-11 Variance to 2009-10	2011-12 Plan	2012-13 Projected	2013-14	2014-15	2015-16
Domestic	8,667	9,086	11,735	12,051	11,973	(78)	239	12,260	12,589	12,822	12,945	13,093
International	1,414	1,696	1,732	1,707	1,772	65	40	1,838	1,864	1,936	1,988	2,040
<b>Total Fall FTEs</b>	<b>10,082</b>	<b>10,782</b>	<b>13,466</b>	<b>13,758</b>	<b>13,745</b>	<b>(13)</b>	<b>279</b>	<b>14,099</b>	<b>14,453</b>	<b>14,758</b>	<b>14,934</b>	<b>15,133</b>
Cumulative increase over 2002-03		700	3,385	3,676	3,663			4,017	4,372	4,676	4,852	5,052
Cumulative increase over 2004-05			2,685	2,976	2,963			3,317	3,672	3,976	4,152	4,352

**Table 4B, Graduate Enrolment, FTE Distribution by Degree**

	2002-03 Actual	2004-05 Actual	2009-10 Actual	2010-11 Plan Jan/10	2010-11 Actual Nov/10	2010-11 Variance to Plan	2010-11 Variance to 2009-10	2011-12 Plan	2012-13 Projected	2013-14	2014-15	2015-16
PhD	4,498	4,771	5,789	5,876	5,955	79	167	6,000	6,104	6,132	6,170	6,226
Doctoral Stream Masters	2,512	2,585	2,749	2,784	2,713	(70)	(36)	2,718	2,718	2,750	2,766	2,775
Professional Masters	3,071	3,426	4,929	5,098	5,076	(22)	148	5,381	5,631	5,875	5,998	6,132
<b>Total Fall FTEs</b>	<b>10,082</b>	<b>10,782</b>	<b>13,466</b>	<b>13,758</b>	<b>13,745</b>	<b>(13)</b>	<b>279</b>	<b>14,099</b>	<b>14,453</b>	<b>14,758</b>	<b>14,934</b>	<b>15,133</b>

**Table 4C, Actual and Projected Graduate Enrolment by Division**

**Total Fall FTEs**

GRADUATE	2002-03	2004-05	2009-10	2010-11	2010-11	2010-11	2010-11	2010-11	2011-12	2012-13	2013-14	2014-15	2015-16
	Actual	Actual	Actual	Plan Jan/10	Actual Nov/10	Variance to Plan	Variance to 2009-10	Plan	Projected				
<b>Total Graduate Enrolment</b>													
APSE	1,214	1,226	1,478	1,464	1,533	69	55	1,614	1,617	1,626	1,629	1,637	
Architecture	231	292	347	337	355	18	8	353	365	379	387	392	
A&S-Humanities	1,078	1,141	1,290		1,254		(37)						
A&S-Social Sciences	663	735	1,051		1,068		17						
A&S-Physical Sciences	774	826	982		951		(31)						
A&S-Life Sciences	317	301	419		430		11						
<b>A&amp;S excl. UTM PMAS &amp; UTSC Grad</b>	<b>2,832</b>	<b>3,003</b>	<b>3,743</b>	<b>3,881</b>	<b>3,703</b>	<b>(178)</b>	<b>(40)</b>	<b>3,818</b>	<b>3,900</b>	<b>3,927</b>	<b>3,948</b>	<b>3,958</b>	
UTM PMAS	168	180	255	263	281	18	26	309	335	359	371	382	
UTSC Graduate			61	62	58	(4)	(3)	76	92	109	123	134	
Dentistry	101	110	120	124	129	5	9	133	130	126	124	124	
Forestry	97	83	68	79	83	4	15	95	98	101	105	108	
Information	231	304	481	503	494	(9)	13	500	556	579	592	604	
Law	79	104	91	89	89	(0)	(2)	121	141	175	192	224	
Management	571	727	1,049	1,070	1,082	12	33	1,153	1,255	1,412	1,492	1,567	
Medicine excl. UTM	1,977	2,224	2,706	2,757	2,781	25	75	2,798	2,814	2,803	2,805	2,821	
Music	133	115	197	210	213	3	16	209	211	201	200	201	
Nursing	188	236	309	310	310	(0)	1	309	314	320	326	331	
OISE	1,611	1,459	1,666	1,692	1,709	17	44	1,682	1,691	1,692	1,686	1,694	
Pharmacy	73	103	118	126	125	(1)	7	124	131	139	134	132	
Phys-Ed	38	39	47	49	50	1	3	52	55	58	61	63	
Social Work	281	281	381	395	392	(3)	11	400	402	404	408	408	
TST	258	296	350	349	360	11	10	354	347	347	352	353	
<b>Total Graduate Enrolment</b>	<b>10,082</b>	<b>10,782</b>	<b>13,466</b>	<b>13,758</b>	<b>13,745</b>	<b>(13)</b>	<b>279</b>	<b>14,099</b>	<b>14,453</b>	<b>14,758</b>	<b>14,934</b>	<b>15,133</b>	



**Table 4D, Actual and Projected Graduate Enrolment by Division**

**Total Fall FTEs**

GRADUATE	2002-03	2004-05	2009-10	2010-11	2010-11	2010-11	2010-11	2011-12	2012-13	2013-14	2014-15	2015-16
	Actual	Actual	Actual	Plan Jan/10	Actual Nov/10	Variance to Plan	Variance to 2009-10	Plan	Projected			
<b>Professional Masters</b>												
APSE	264	169	273	278	270	(8)	(2)	356	391	398	400	403
Architecture	231	292	347	337	355	18	8	353	360	369	372	372
A&S St. George PMAS	165	187	315	355	341	(14)	26	398	413	420	428	436
UTM PMAS	168	180	255	263	281	18	26	309	335	359	371	382
UTSC PMAS			61	57	53	(4)	(8)	60	64	68	68	68
Dentistry	65	70	74	74	79	5	5	80	75	71	71	71
Forestry	32	25	20	29	31	2	11	40	39	39	39	39
Information	198	272	447	469	456	(12)	9	459	507	524	530	536
Law	0	3	0	0	1	1	1	30	45	75	90	120
Management	506	654	974	1,000	1,006	6	32	1,081	1,178	1,327	1,402	1,477
Medicine excl. UTM	479	565	726	771	757	(15)	31	786	788	786	785	785
Music	63	59	77	86	70	(16)	(7)	69	74	74	74	74
Nursing	151	185	231	230	237	8	6	231	232	232	232	231
OISE	514	522	797	809	799	(10)	2	785	786	789	791	792
Pharmacy	0	0	0	0	0	0	0	0	0	0	0	0
Phys-Ed	0	1	0	0	0	0	0	0	0	0	0	0
Social Work	229	231	331	340	339	(1)	8	345	345	345	345	345
TST	7	4	1	1	1	(0)	(0)	1	1	1	1	1
<b>Total Professional Masters</b>	<b>3,071</b>	<b>3,420</b>	<b>4,929</b>	<b>5,098</b>	<b>5,076</b>	<b>(22)</b>	<b>148</b>	<b>5,381</b>	<b>5,631</b>	<b>5,875</b>	<b>5,998</b>	<b>6,132</b>

**Table 4E, Actual and Projected Graduate Enrolment by Division**

**Total Fall FTEs**

GRADUATE	2002-03	2004-05	2009-10	2010-11	2010-11	2010-11	2010-11	2010-11	2011-12	2012-13	2013-14	2014-15	2015-16
	Actual	Actual	Actual	Plan Jan/10	Actual Nov/10	Variance to Plan	Variance to Plan	Variance to 2009-10	Plan	Projected			
<b>Doctoral Stream Masters</b>													
APSE	531	535	529	508	567	59	38		538	499	490	486	490
A&S-Humanities	274	314	316		289		(27)						
A&S-Social Sciences	200	226	295		273		(22)						
A&S-Physical Sciences	237	219	255		201		(54)						
A&S-Life Sciences	100	112	120		135		15						
<b>A&amp;S-All Campuses</b>	<b>811</b>	<b>870</b>	<b>986</b>	<b>1,059</b>	<b>898</b>	<b>(161)</b>	<b>(88)</b>		<b>958</b>	<b>1,012</b>	<b>1,054</b>	<b>1,076</b>	<b>1,080</b>
Dentistry	15	13	23	26	23	(3)	0		26	24	24	23	23
Forestry	23	20	18	17	19	2	1		16	17	17	17	17
Law	39	51	49	48	53	5	4		52	52	52	52	52
Medicine	707	793	842	847	861	15	20		869	875	875	877	877
Music	33	16	20	23	23	(0)	3		23	22	22	22	22
Nursing	1												
OISE	247	158	143	117	124	7	(18)		101	90	87	84	84
Pharmacy	27	39	33	42	40	(2)	7		43	48	53	53	54
Phys-Ed	20	15	23	24	22	(3)	(2)		21	20	20	21	20
Social Work													
TST	59	80	83	73	83	11	1		71	59	56	56	57
<b>Total Doctoral Stream Masters</b>	<b>2,512</b>	<b>2,591</b>	<b>2,749</b>	<b>2,784</b>	<b>2,713</b>	<b>(70)</b>	<b>(36)</b>		<b>2,718</b>	<b>2,718</b>	<b>2,750</b>	<b>2,766</b>	<b>2,775</b>

**Table 4F, Actual and Projected Graduate Enrolment by Division**

**Total Fall FTEs**

<b>GRADUATE</b>	<b>2002-03 Actual</b>	<b>2004-05 Actual</b>	<b>2009-10 Actual</b>	<b>2010-11 Plan Jan/10</b>	<b>2010-11 Actual Nov/10</b>	<b>2010-11 Variance to Plan</b>	<b>2010-11 Variance to 2009-10</b>	<b>2011-12 Plan</b>	<b>2012-13 Projected</b>	<b>2013-14</b>	<b>2014-15</b>	<b>2015-16</b>
<b>Doctoral Stream PhD</b>												
APSE	419	522	676	677	695	18	19	720	727	738	743	744
Architecture									5	10	15	20
A&S-Humanities	788	812	952		942		(10)					
A&S-Social Sciences	356	379	501		529		28					
A&S-Physical Sciences	499	567	691		699		8					
A&S-Life Sciences	213	188	298		294		(4)					
<b>Arts and Science</b>	<b>1,856</b>	<b>1,946</b>	<b>2,442</b>	<b>2,467</b>	<b>2,464</b>	<b>(3)</b>	<b>22</b>	<b>2,462</b>	<b>2,476</b>	<b>2,453</b>	<b>2,444</b>	<b>2,442</b>
UTSC				5	5	0	5	16	28	41	55	66
Dentistry	21	26	22	24	26	2	4	27	31	31	30	30
Forestry	42	38	30	33	33	0	3	39	42	45	49	52
Information	33	32	34	35	38	3	4	41	49	55	62	68
Law	40	49	42	41	35	(6)	(7)	39	44	48	50	52
Management	65	73	75	70	76	6	1	72	77	85	90	90
Medicine	791	866	1,138	1,138	1,163	25	25	1,142	1,151	1,143	1,143	1,160
Music	37	40	100	101	120	19	20	117	115	105	104	105
Nursing	37	51	78	80	72	(8)	(6)	79	83	89	94	100
OISE	849	780	726	766	786	20	59	797	815	817	811	818
Pharmacy	46	64	85	84	85	1	0	81	83	86	81	78
Phys-Ed	18	22	23	25	28	3	5	31	35	38	40	43
Social Work	52	50	50	55	53	(2)	3	55	57	59	63	63
TST	192	212	267	275	276	1	9	282	287	290	296	296
<b>Total Doctoral Stream PhD</b>	<b>4,498</b>	<b>4,771</b>	<b>5,789</b>	<b>5,876</b>	<b>5,955</b>	<b>79</b>	<b>167</b>	<b>6,000</b>	<b>6,104</b>	<b>6,132</b>	<b>6,170</b>	<b>6,226</b>

**Table 4G, Graduate Enrolment, Eligible (Fall plus Summer) FTE Enrolments**

	2002-03 Actual	2004-05 Actual	Expansion Framework Phase 1 Approved Oct/06	Expansion Phase 1 & 2 End State Target Feb/09	2009-10 Actual	2010-11		2010-11 Variance to Plan to 2008-09	2010-11 Variance to Revised End State Target	2011-12 Plan	2012-13 Projected	2013-14		2014-15	2015-16
						Jan/10	Nov/10					Revised Expansion End State Target Feb/10	Variance to End State Target		
Masters	4,481	4,822	6,192	6,531	6,561	6,825	6,570	9	(461)	6,774	7,005	7,031	7,188	7,287	7,381
PhD	3,024	3,103	3,867	4,116	3,804	3,833	3,903	69	49	3,895	3,900	3,853	3,925	3,952	3,969
<b>Fall &amp; Summer EFTEs</b>	<b>7,505</b>	<b>7,925</b>	<b>10,059</b>	<b>10,647</b>	<b>10,365</b>	<b>10,658</b>	<b>10,473</b>	<b>108</b>	<b>(412)</b>	<b>10,669</b>	<b>10,905</b>	<b>10,884</b>	<b>11,113</b>	<b>11,239</b>	<b>11,350</b>
<p>Note 1: For funding purposes, Ministry definition of Masters includes Year 1 "PHD Qualifying Year" students and diploma/certificate programs.                      Note 2: Nursing graduate eligible FTE enrolment growth was funded by the Ministry from a separate funding envelope prior to 2008-09</p>															
Masters	341	1,711	2,050	2,080	2,344	2,089	2,089			2,293	2,524	2,550	2,707	2,806	2,900
PhD	79	842	1,091	780	809	878	878			871	876	829	901	927	945
Cumulative increase over 2002-03	420	2,554	3,142	2,860	3,153	2,968	2,968			3,164	3,400	3,379	3,608	3,734	3,845
Masters		1,370	1,709	1,739	2,003	1,748	1,748			1,952	2,182	2,209	2,366	2,465	2,559
PhD		764	1,013	701	731	800	800			792	797	750	823	849	866
Cumulative increase over 2004-05		2,134	2,722	2,440	2,733	2,548	2,548			2,744	2,980	2,959	3,188	3,314	3,425

**Table 4H, Graduate Enrollment, Eligible (Fall plus Summer) FTE Enrollments by Division**

	2002-03		2004-05		2009-10		2010-11		2010-11		2010-11		2011-12		2012-13		2013-14		2014-15		2015-16		
	Actual	Actual	Actual	Approved	Expansion Phase 1 & 2 End State Target	Actual	Plan	Actual	Variance to Plan	Variance to 2009-10	Variance to Revised End State Target	Projected	Reallocated Expansion End State Target	2013-14	Variance to Revised End State Target	2012-13	2011-12	2010-11	2010-11	2010-11	2010-11	2010-11	2010-11
						Jan/10	Nov/10						Dec/10										
APSE	576	503	643		617	637	664	28	21	(38)	702	702	702	702	0	702	702	702	702	705	705	709	
Architecture	183	210	312		298	298	317	19	4	(1)	317	328	318	331	13	328	317	317	318	333	333	333	
A&S excl. UTM & UTSC PMAS	691	781	1,107		1,194	1,230	1,064	(166)	(43)	(200)	1,159	1,229	1,264	1,264	0	1,229	1,159	1,159	1,264	1,283	1,283	1,283	
UTM PMAS	131	138	216		210	226	217	(9)	1	(34)	224	249	250	270	20	249	224	224	250	280	280	289	
UTSC PMAS			57		44	52	49	(4)	(8)	(15)	56	59	64	63	(0)	59	56	56	64	63	63	63	
Dentistry	45	46	74		59	72	77	5	3	15	71	64	62	62	(0)	64	71	71	62	62	62	62	
Forestry	48	33	29		30	41	43	2	14	19	51	48	24	48	24	48	51	48	24	48	48	48	
Information	172	243	379		379	438	426	(12)	11	(50)	432	476	476	493	17	476	432	432	476	499	499	504	
Law	19	28	36		43	33	41	7	5	(25)	67	82	65	112	47	82	67	67	112	127	127	157	
Management	417	512	732		732	756	695	(61)	(5)	(87)	690	753	782	824	42	753	690	690	782	867	867	907	
Medicine excl. UTM	1,005	1,167	1,355		1,395	1,404	1,399	(5)	44	(46)	1,445	1,445	1,445	1,445	0	1,445	1,445	1,445	1,445	1,445	1,445	1,445	
Music	81	65	92		109	107	83	(23)	(9)	(10)	88	94	94	94	(0)	94	88	88	94	94	94	94	
Nursing	133	170	230		203	228	225	(3)	(5)	(3)	228	229	228	228	0	229	228	228	228	228	228	228	
OISE/UT	685	616	884		766	876	856	(21)	(29)	(29)	827	827	827	827	0	827	827	827	827	828	828	830	
Pharmacy	24	36	33		50	42	35	(7)	2	(11)	38	42	46	46	0	42	38	38	46	46	46	46	
Phys-Ed	18	13	16		15	19	18	(2)	1	3	13	14	15	15	(0)	14	13	13	15	15	15	15	
Social Work	217	229	326		332	335	333	(2)	7	(4)	337	337	337	337	0	337	337	337	337	337	337	337	
TST	39	33	36		36	31	31	(1)	(6)	(3)	29	27	33	27	(7)	27	29	29	33	27	27	27	
<b>Masters (MTCU definition)</b>	<b>4,481</b>	<b>4,822</b>	<b>6,561</b>		<b>6,531</b>	<b>6,825</b>	<b>6,570</b>	<b>(255)</b>	<b>9</b>	<b>(461)</b>	<b>6,774</b>	<b>7,005</b>	<b>7,031</b>	<b>7,188</b>	<b>157</b>	<b>7,005</b>	<b>6,774</b>	<b>6,774</b>	<b>7,031</b>	<b>7,287</b>	<b>7,287</b>	<b>7,381</b>	
APSE	260	335	422			448	469	21	47	(1)	471	471	470	471	0	471	471	471	470	470	470	470	
Architecture																							
A&S-All Campuses	1,071	1,075	1,477			1,452	1,481	29	4	78	1,457	1,429	1,403	1,418	16	1,429	1,457	1,457	1,403	1,430	1,430	1,437	
Dentistry	12	17	14			15	13	(2)	(1)	(5)	16	15	18	18	0	15	16	16	18	18	18	18	
Forestry	26	23	20			19	24	5	4	9	24	30	15	35	20	30	24	24	15	38	38	36	
Information	21	24	20			18	22	4	2	(13)	24	31	35	35	0	31	24	24	35	38	38	40	
Law	24	29	24			25	24	(1)	0	(4)	28	31	28	32	4	31	28	28	35	33	33	35	
Management	30	42	39			35	46	11	7	(5)	43	43	36	45	9	43	43	43	36	48	48	43	
Medicine	601	672	822			814	817	2	(5)	(26)	821	839	842	842	(0)	839	821	821	842	842	842	842	
Music	28	24	90			88	106	18	16	28	97	80	78	78	0	80	97	97	78	77	77	77	
Nursing	25	41	58			56	52	(4)	(6)	(9)	60	64	61	70	8	64	60	60	61	79	79	82	
OISE/UT	702	563	546			583	582	(1)	36	(1)	582	583	582	582	(0)	583	582	582	582	581	581	582	
Pharmacy	42	53	63			65	66	2	3	7	60	59	59	59	(0)	59	60	60	59	57	57	60	
Phys-Ed	18	20	19			19	23	4	4	(4)	22	25	28	27	(0)	25	22	22	28	28	28	28	
Social Work	34	39	42			42	37	(5)	(5)	(10)	40	45	47	47	0	45	40	40	47	47	47	47	
TST	130	145	147			154	140	(14)	(7)	(5)	150	151	145	154	10	151	150	150	145	150	150	152	
<b>PhD (MTCU definition)</b>	<b>3,024</b>	<b>3,103</b>	<b>3,804</b>		<b>4,116</b>	<b>3,833</b>	<b>3,903</b>	<b>69</b>	<b>99</b>	<b>49</b>	<b>3,895</b>	<b>3,900</b>	<b>3,853</b>	<b>3,925</b>	<b>72</b>	<b>3,900</b>	<b>3,895</b>	<b>3,895</b>	<b>3,853</b>	<b>3,952</b>	<b>3,952</b>	<b>3,969</b>	
<b>Fall &amp; Summer EFTes</b>	<b>7,505</b>	<b>7,925</b>	<b>10,365</b>		<b>10,647</b>	<b>10,658</b>	<b>10,473</b>	<b>(186)</b>	<b>108</b>	<b>(412)</b>	<b>10,669</b>	<b>10,905</b>	<b>10,884</b>	<b>11,113</b>	<b>229</b>	<b>10,905</b>	<b>10,669</b>	<b>10,669</b>	<b>10,884</b>	<b>11,239</b>	<b>11,239</b>	<b>11,350</b>	

Note 1: For funding purposes, Ministry definition of Masters includes Year 1 "PHD Qualifying Year" students and diploma/certificate programs.

**TABLE 5A - Undergraduate and Graduate Intake by Geographic Origin\***

	TOTAL HEADCOUNT				PERCENTAGE OF TOTAL HEADCOUNT				
	GTA Area	Other Ontario	Other Canada	Other Countries	Total	GTA Area	Other Ontario	Other Canada	Other Countries
<b>2005-06</b>									
<b>Undergraduate</b>	10,901	1,373	771	1,817	14,862	73.3%	9.2%	5.2%	12.2%
<b>Graduate</b>	2,286	467	334	617	3,704	61.7%	12.6%	9.0%	16.7%
<b>Total Undergrad &amp; Graduate</b>	<b>13,187</b>	<b>1,840</b>	<b>1,105</b>	<b>2,434</b>	<b>18,566</b>	<b>71.0%</b>	<b>9.9%</b>	<b>6.0%</b>	<b>13.1%</b>

<b>2009-10</b>									
<b>Undergraduate</b>	10,135	1,586	871	2,713	15,305	66.2%	10.4%	5.7%	17.7%
<b>Graduate</b>	2,761	823	597	679	4,860	56.8%	16.9%	12.3%	14.0%
<b>Total Undergrad &amp; Graduate</b>	<b>12,896</b>	<b>2,409</b>	<b>1,468</b>	<b>3,392</b>	<b>20,165</b>	<b>64.0%</b>	<b>11.9%</b>	<b>7.3%</b>	<b>16.8%</b>

<b>2010-11</b>									
<b>Undergraduate</b>	9,736	1,246	1,002	2,784	14,768	65.9%	8.4%	6.8%	18.9%
<b>Graduate</b>	3,041	436	646	684	4,807	63.3%	9.1%	13.4%	14.2%
<b>Total Undergrad &amp; Graduate</b>	<b>12,777</b>	<b>1,682</b>	<b>1,648</b>	<b>3,468</b>	<b>19,575</b>	<b>65.3%</b>	<b>8.6%</b>	<b>8.4%</b>	<b>17.7%</b>

\* Students' geographic origin determined using "Home province", "County of Residence" and "Admissions Applicant Type" fields in ROSI.

Notes: 1) Undergraduate excludes TST, Transitional Year Program, Academic Bridging Program and Woodsworth diploma & certificate programs.

Intake data is not available for Postgraduate Medical Education.

2) Graduate data includes diplomas in Medicine and Music. Excludes TST.

3) 2005-06 was the third year of accommodating the "double cohort" from Ontario secondary schools.

4) Excludes Summer and Winter new intakes so programs that start especially in the summer such as DIFA, MBiotech, MMPA are understated.

5) Changes to the count program related to selection of permanent address information will contribute to lower GTA figures for 2009-10 onwards.

6) Other Countries includes all international students plus domestic students living abroad.

**TABLE 5B - Undergraduate and Graduate Intake by Geographic Origin\* By Faculty/Campus**

	2005-06					2010-11				
	Head Count	GTA Area	Other Ontario	Other Canada	Other Countries	Head Count	GTA Area	Other Ontario	Other Canada	Other Countries
<b>Undergraduate</b>										
<b>First Entry:</b>										
Applied Science & Engineering	1,274	70.4%	6.4%	8.7%	14.5%	1,249	50.3%	7.6%	11.4%	30.7%
Arts & Science	6,482	69.2%	8.8%	5.6%	16.4%	5,972	59.3%	8.2%	8.4%	24.2%
St. George	2,633	78.2%	8.7%	3.1%	10.0%	3,019	71.1%	7.9%	3.2%	17.8%
UTM	2,668	85.0%	2.7%	2.5%	9.9%	2,585	78.3%	4.7%	2.7%	14.3%
UTSC	125	60.8%	16.8%	17.6%	4.8%	136	70.6%	15.4%	9.6%	4.4%
Music	143	75.5%	21.7%	1.4%	1.4%	167	81.4%	11.4%	4.8%	2.4%
Physical Education & Health										
<b>Second Entry:</b>										
Dentistry	78	67.9%	17.9%	10.3%	3.8%	87	69.0%	14.9%	14.9%	1.1%
Law	179	52.0%	14.5%	23.5%	10.1%	187	49.7%	10.7%	25.1%	14.4%
Medicine	211	55.9%	29.4%	13.3%	1.4%	253	63.2%	21.7%	13.8%	1.2%
Nursing	113	64.6%	26.5%	3.5%	5.3%	116	62.9%	27.6%	7.8%	1.7%
OISE	813	76.5%	20.9%	2.2%	0.4%	847	82.6%	11.8%	5.1%	0.5%
Pharmacy	143	35.0%	48.3%	16.1%	0.7%	150	52.7%	30.0%	16.7%	0.7%
<b>Total Undergraduate</b>	<b>14,862</b>	<b>73.3%</b>	<b>9.2%</b>	<b>5.2%</b>	<b>12.2%</b>	<b>14,768</b>	<b>65.9%</b>	<b>8.4%</b>	<b>6.8%</b>	<b>18.9%</b>
<b>Graduate</b>										
Applied Science & Engineering	381	58.8%	10.2%	8.1%	22.8%	557	56.9%	7.5%	11.0%	24.6%
Architecture, Landscape & Design	79	43.0%	12.7%	21.5%	22.8%	119	54.6%	8.4%	21.0%	16.0%
Arts & Science excl. UTM & UTSC	1,106	49.6%	12.6%	12.2%	25.6%	1,254	55.2%	7.7%	19.1%	18.0%
UTM Professional Masters	24	37.5%	12.5%	16.7%	33.3%	73	45.2%	8.2%	8.2%	38.4%
UTSC Graduate						60	70.0%	10.0%	11.7%	8.3%
Dentistry	18	55.6%	5.6%	11.1%	27.8%	19	42.1%	10.5%	15.8%	31.6%
Forestry	25	72.0%	12.0%	8.0%	8.0%	37	75.7%	13.5%	5.4%	5.4%
Information	177	63.8%	15.8%	7.9%	12.4%	222	69.8%	10.8%	14.0%	5.4%
Law	60	30.0%	3.3%	5.0%	61.7%	56	44.6%	3.6%	19.6%	32.1%
Management	344	68.3%	5.5%	5.5%	20.6%	424	60.1%	3.3%	11.6%	25.0%
Medicine excl. UTM	697	70.6%	15.1%	8.8%	5.6%	881	69.7%	11.0%	12.4%	6.9%
Music	66	56.1%	13.6%	16.7%	13.6%	73	46.6%	6.8%	34.2%	12.3%
Nursing	125	67.2%	24.0%	8.0%	0.8%	131	71.8%	19.1%	9.2%	0.0%
OISE	406	77.8%	11.3%	3.4%	7.4%	639	76.2%	10.0%	6.3%	7.5%
Pharmacy	30	60.0%	16.7%	13.3%	10.0%	23	82.6%	0.0%	13.0%	4.3%
Physical Education & Health	13	84.6%	15.4%	0.0%	0.0%	13	76.9%	15.4%	0.0%	7.7%
Social Work	153	77.1%	17.0%	4.6%	1.3%	226	72.1%	15.5%	10.2%	2.2%
<b>Total Graduate</b>	<b>3,704</b>	<b>61.7%</b>	<b>12.6%</b>	<b>9.0%</b>	<b>16.7%</b>	<b>4,807</b>	<b>63.3%</b>	<b>9.1%</b>	<b>13.4%</b>	<b>14.2%</b>
<b>Total Undergrad &amp; Graduate</b>	<b>18,566</b>	<b>71.0%</b>	<b>9.9%</b>	<b>6.0%</b>	<b>13.1%</b>	<b>19,575</b>	<b>65.3%</b>	<b>7.3%</b>	<b>9.7%</b>	<b>17.7%</b>

\* Student's geographic origin determined using "Home province", "County of Residence" and "Admissions Applicant Type" fields in ROSI.

Notes: 1) Undergraduate excludes TST, Transitional Year Program, Academic Bridging Program and Woodsworth diploma & certificate programs.

Intake data is not available for Postgraduate Medical Education.

- 2) Graduate data includes diplomas in Medicine and Music. Excludes TST.
- 3) 2005-065 was the second year of accommodating the "double cohort" from Ontario secondary schools.
- 4) Excludes Summer and Winter new intakes so programs that start especially in the summer such as DIFA, MBiotech, MMPA are understated.
- 5) Changes to the count program related to selection of permanent address information will contribute to lower GTA figures for 2009-10 onwards.
- 6) Other Countries includes all international students plus domestic students living abroad.

<p style="text-align: center;"><b>TABLE 6</b></p> <p style="text-align: center;"><b>University of Toronto Total International Student Enrolment</b></p>						
	International Student Enrolment		International Undergraduate as a % of Total Undergraduate Enrolment	International Graduate as a % of Total Graduate Enrolment	Total International Enrolment as a % of Total Enrolment	
	Undergrad	Graduate				Total
1990-91	2,216	1,201	3,417	4.9	16.2	6.5
1991-92	2,445	1,249	3,694	5.3	16.0	6.8
1992-93	2,294	1,248	3,542	5.1	15.4	6.7
1993-94	2,043	1,142	3,185	4.6	14.1	6.0
1994-95	1,629	1,028	2,657	3.8	12.9	5.2
1995-96	1,330	863	2,193	3.1	10.9	4.3
1996-97	1,204	770	1,974	2.8	9.9	3.9
<b>1997-98</b>	<b>1,142</b>	<b>755</b>	<b>1,897</b>	<b>2.7</b>	<b>9.9</b>	<b>3.8</b>
1998-99	1,261	776	2,037	2.9	10.2	4.0
1999-00	1,572	831	2,403	3.6	10.7	4.6
2000-01	1,914	980	2,894	4.3	9.6	5.2
2001-02	2,388	1,150	3,538	5.1	10.7	6.1
2002-03	3,023	1,380	4,403	6.0	11.9	7.1
2003-04	3,535	1,570	5,105	6.4	13.2	7.6
2004-05	4,318	1,628	5,946	7.8	13.5	8.8
2005-06	4,982	1,659	6,641	8.6	13.9	9.5
2006-07	5,312	1,753	7,065	9.0	14.3	9.9
2007-08	5,655	1,725	7,380	9.5	12.8	10.1
2008-09	6,233	1,633	7,866	10.4	11.8	10.7
2009-10	6,832	1,650	8,482	11.1	11.4	11.2
<b>2010-11</b>	<b>7,423</b>	<b>1,676</b>	<b>9,099</b>	<b>11.8</b>	<b>11.5</b>	<b>11.8</b>
2011-12	7,945	1,747	9,692	12.6	11.7	12.4
2012-13	8,379	1,775	10,154	13.1	11.5	12.9
2013-14	8,742	1,847	10,589	13.7	11.8	13.4
2014-15	8,988	1,896	10,884	14.1	12.0	13.7
2015-16	9,166	1,947	11,113	14.4	12.1	14.0

Note: 1) Excludes TST undergraduate/graduate.  
2) Beginning 2000-01, OISE graduate students are included.



**TABLE 7**

**University of Toronto Full-time Intake of International Students**

	All International Students			Annual Percent Change		
	Undergrad	Graduate	Total	Undergrad	Graduate	Total
	1990-91	492	409	901	-0.2	0.7
1991-92	491	412	903	-7.7	-10.9	-9.2
1992-93	453	367	820	-17.7	-26.7	-21.7
1993-94	373	269	642	-40.5	-10.4	-27.9
1994-95	222	241	463	-15.3	-10.0	-12.5
1995-96	188	217	405	-4.8	18.0	7.4
1996-97	179	256	435	-1.1	-1.2	-1.1
1997-98	177	253	430	34.5	10.7	20.5
1998-99	238	280	518	86.6	29.6	55.8
1999-00	444	363	807	28.4	3.3	17.1
2000-01	570	375	945	28.8	11.5	21.9
2001-02	734	418	1,152	26.2	16.3	22.6
2002-03	926	486	1,412	14.9	11.5	13.7
2003-04	1,064	542	1,606	41.0	1.5	27.6
2004-05	1,500	550	2,050	9.4	8.0	9.0
2005-06	1,641	594	2,235	-4.1	7.4	-1.1
2006-07	1,573	638	2,211	8.8	-12.1	2.8
2007-08	1,712	561	2,273	15.1	4.8	12.6
2008-09	1,971	588	2,559	5.4	-13.4	1.1
2009-10	2,078	509	2,587	2.8	13.8	4.9
2010-11	2,136	579	2,715			
<b>Change 1990-2010</b>	<b>1,644</b>	<b>170</b>	<b>1,814</b>	<b>334.1</b>	<b>41.6</b>	<b>201.3</b>

Notes: 1) Excludes TST undergraduate/graduate.

2) Beginning 2000-01, OISE graduate students are included.

3) Beginning 1996-97, the MTCU fee waiver program for international graduate students was eliminated and the number of categories of students exempt from full fees was reduced.

**Table 8 - International Student Enrolment By Geographic Region**  
(Based on Country of Citizenship)

	TOTAL HEADCOUNT					PERCENTAGE OF TOTAL HEADCOUNT					
	Americas	Europe	Middle East	Asia	Africa and Oceania	Total	Americas	Europe	Middle East	Asia	Africa and Oceania
<b>UNDERGRADUATE:</b>											
1995-96	146	173	120	823	66	1,328	11.0%	13.0%	9.0%	62.0%	5.0%
1999-00	280	222	161	806	99	1,568	17.9%	14.2%	10.3%	51.4%	6.3%
2005-06	712	520	396	3,099	255	4,982	14.3%	10.4%	7.9%	62.2%	5.1%
2009-10	704	576	449	4,723	380	6,832	10.3%	8.4%	6.6%	69.1%	5.6%
2010-11	637	573	466	5,361	386	7,423	8.6%	7.7%	6.3%	72.2%	5.2%
<b>GRADUATE:</b>											
1995-96	301	181	121	207	52	862	34.9%	21.0%	14.0%	24.0%	6.0%
1999-00	321	214	69	236	59	899	35.7%	23.8%	7.7%	26.3%	6.6%
2005-06	471	327	201	598	62	1,659	28.4%	19.7%	12.1%	36.0%	3.7%
2009-10	475	261	257	609	48	1,650	28.8%	15.8%	15.6%	36.9%	2.9%
2010-11	470	246	248	661	51	1,676	28.0%	14.7%	14.8%	39.4%	3.0%
<b>COMBINED:</b>											
1995-96	447	354	241	1,030	118	2,190	20.4%	16.2%	11.0%	47.0%	5.4%
1999-00	601	436	230	1,042	158	2,467	24.4%	17.7%	9.3%	42.2%	6.4%
2005-06	1,183	847	597	3,697	317	6,641	17.8%	12.8%	9.0%	55.7%	4.8%
2009-10	1,179	837	706	5,332	428	8,482	13.9%	9.9%	8.3%	62.9%	5.0%
2010-11	1,107	819	714	6,022	437	9,099	12.2%	9.0%	7.8%	66.2%	4.8%

**Table 9 - International Student Enrolment By Country of Citizenship**

"TOP 15" COUNTRIES	Actual			GROWTH 2010 OVER 1999
	1999-00	2005-06	2010-11	
<b>UNDERGRADUATE:</b>				
China (People's Republic)	176	1,164	3,033	1623%
South Korea	123	613	698	467%
U.S.A.	174	433	315	81%
India	56	235	290	418%
Hong Kong	102	206	251	146%
Pakistan	41	237	239	483%
Malaysia	31	39	198	539%
Saudi Arabia	63	99	136	125%
Japan	51	140	139	173%
Taiwan	87	127	123	41%
Nigeria	6	47	106	1833%
United Kingdom	53	123	139	123%
Bangladesh	65	87	113	74%
Australia	29	55	80	169%
Singapore	7	68	69	886%
Subtotal - Top 15 Countries as of 2009-10	1,064	3,673	5,321	457%
All remaining countries	504	1,309	1,498	197%
<b>Total Undergraduate</b>	<b>1,568</b>	<b>4,982</b>	<b>7,423</b>	<b>373%</b>
Number of Countries - Undergraduate	110	139	146	33%
<b>GRADUATE</b>				
U.S.A.	222	315	348	57%
China (People's Republic)	86	270	305	255%
India	32	108	136	325%
Iran	30	75	126	340%
Germany	38	76	54	24%
South Korea	17	39	43	171%
Japan	41	50	38	-7%
United Kingdom	20	37	39	70%
Mexico	24	47	35	33%
Israel	21	40	29	29%
Turkey	3	24	26	767%
Taiwan	4	18	22	450%
Saudi Arabia	3	15	19	600%
Colombia	9	13	18	133%
Hong Kong	11	17	16	64%
Subtotal - Top 15 Countries as of 2009-10	561	1,144	1,221	123%
All remaining countries	338	515	423	25%
<b>Total Graduate</b>	<b>899</b>	<b>1,659</b>	<b>1,676</b>	<b>86%</b>
Number of Countries - Graduate	103	105	108	5%

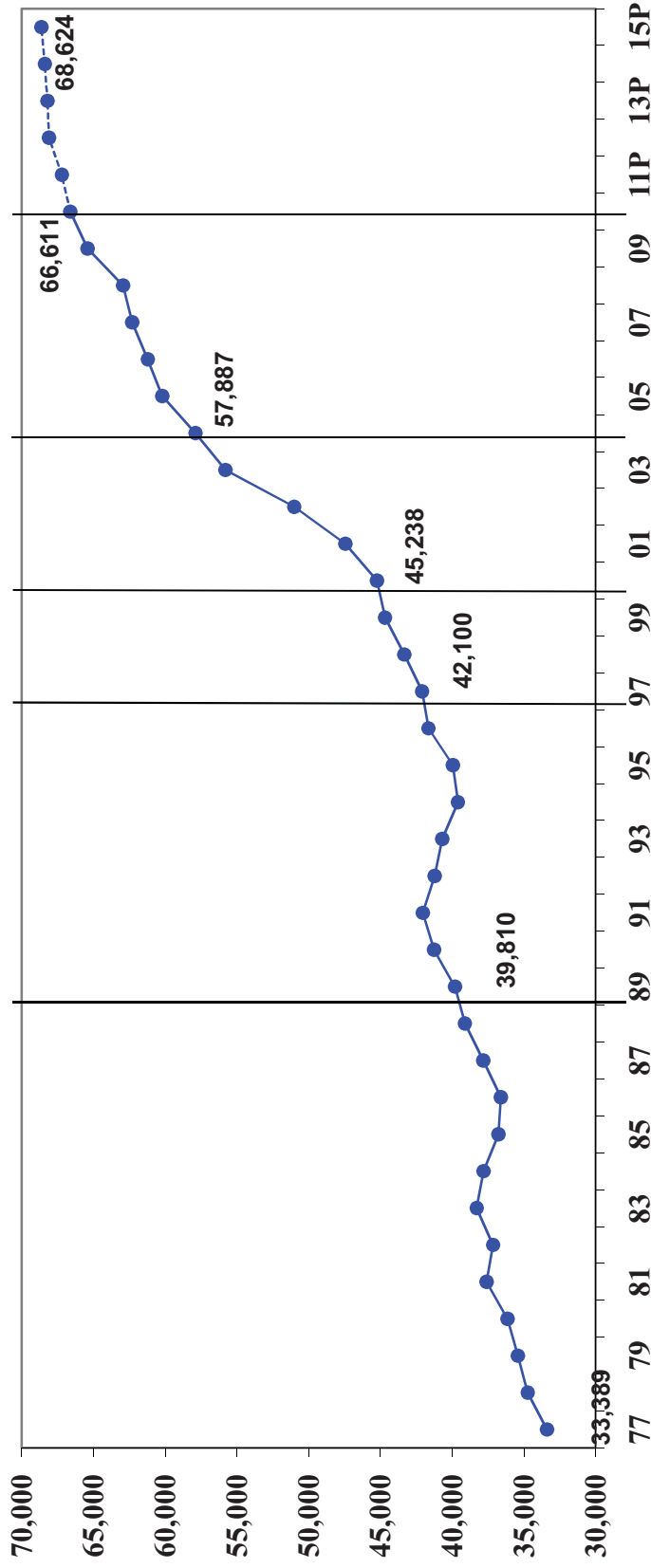
  

	Actual 1999-00	Actual 2005-06	Actual 2009-10	Actual 2010-11
<b>UNDERGRADUATE:</b>				
	11.2%	23.4%	34.9%	40.9%
	7.8%	12.3%	10.7%	9.4%
	11.1%	8.7%	5.2%	4.2%
	3.6%	4.7%	4.3%	3.9%
	6.5%	4.1%	4.0%	3.4%
	2.6%	4.8%	3.6%	3.2%
	2.0%	0.8%	2.2%	2.7%
	4.0%	2.0%	2.0%	1.9%
	3.3%	2.8%	1.7%	1.9%
	5.5%	2.5%	1.9%	1.7%
	0.4%	0.9%	1.6%	1.6%
	3.4%	2.5%	2.0%	1.6%
	4.1%	1.7%	1.5%	1.5%
	1.8%	1.1%	1.2%	1.1%
	0.4%	1.4%	1.0%	0.9%
	67.9%	73.7%	77.9%	79.8%
	32.1%	26.3%	22.1%	20.2%
	100.0%	100.0%	100.0%	100.0%
<b>GRADUATE:</b>				
	24.7%	19.0%	21.8%	20.8%
	9.6%	16.3%	15.5%	18.2%
	3.6%	6.5%	8.6%	8.1%
	3.3%	4.5%	7.6%	7.9%
	4.2%	4.6%	3.3%	2.8%
	1.9%	2.4%	2.6%	2.7%
	4.6%	3.0%	2.3%	2.3%
	2.2%	2.2%	2.4%	2.0%
	2.7%	2.8%	2.1%	1.9%
	2.3%	2.4%	1.8%	1.6%
	0.3%	1.4%	1.6%	1.6%
	0.4%	1.1%	1.3%	1.3%
	0.3%	0.9%	1.2%	1.3%
	1.0%	0.8%	1.1%	1.3%
	1.2%	1.0%	1.0%	1.1%
	62.4%	69.0%	74.0%	74.8%
	37.6%	31.0%	26.0%	25.2%
	100.0%	100.0%	100.0%	100.0%

**Table 10: Total Actual and Projected FTE Enrollments: Domestic/International Mix**

Total UofT FTEs incl. TST (Fall)	2002-03	2004-05	2009-10	2010-11		2010-11	2010-11	2010-11	2011-12	2012-13	2013-14	2014-15	2015-16
	Actual	Actual	Actual	Plan	Actual	Variance to Plan	Variance to 2009-10	Plan	Projected				
Undergraduate - Domestic	38,901	43,980	46,698	47,037	47,111	74	412	46,923	47,102	46,621	46,451	46,335	
Undergraduate - International	2,719	3,898	6,016	6,330	6,553	224	537	6,982	7,334	7,617	7,804	7,963	
<b>TOTAL UNDERGRADUATE</b>	<b>41,620</b>	<b>47,878</b>	<b>52,715</b>	<b>53,367</b>	<b>53,664</b>	<b>297</b>	<b>949</b>	<b>53,905</b>	<b>54,436</b>	<b>54,238</b>	<b>54,254</b>	<b>54,299</b>	
Graduate - Domestic	8,667	9,086	11,735	12,051	11,973	(78)	239	12,260	12,589	12,822	12,945	13,093	
Graduate - International	1,414	1,696	1,732	1,707	1,772	65	40	1,838	1,864	1,936	1,988	2,040	
<b>TOTAL GRADUATE</b>	<b>10,082</b>	<b>10,782</b>	<b>13,466</b>	<b>13,758</b>	<b>13,745</b>	<b>(13)</b>	<b>279</b>	<b>14,099</b>	<b>14,453</b>	<b>14,758</b>	<b>14,934</b>	<b>15,133</b>	
Total - Domestic	47,568	53,066	58,433	59,088	59,084	(4)	651	59,183	59,691	59,443	59,396	59,428	
Total - International	4,133	5,594	7,748	8,036	8,325	289	577	8,820	9,198	9,552	9,792	10,004	
<b>TOTAL COMBINED FTEs</b>	<b>51,702</b>	<b>58,659</b>	<b>66,181</b>	<b>67,124</b>	<b>67,409</b>	<b>285</b>	<b>1,228</b>	<b>68,004</b>	<b>68,889</b>	<b>68,996</b>	<b>69,188</b>	<b>69,432</b>	
% International - Undergraduate	6.5%	8.1%	11.4%	11.9%	12.2%			13.0%	13.5%	14.0%	14.4%	14.7%	
% International - Graduate	14.0%	15.7%	12.9%	12.4%	12.9%			13.0%	12.9%	13.1%	13.3%	13.5%	
% International - Combined	8.0%	9.5%	11.7%	12.0%	12.3%			13.0%	13.4%	13.8%	14.2%	14.4%	

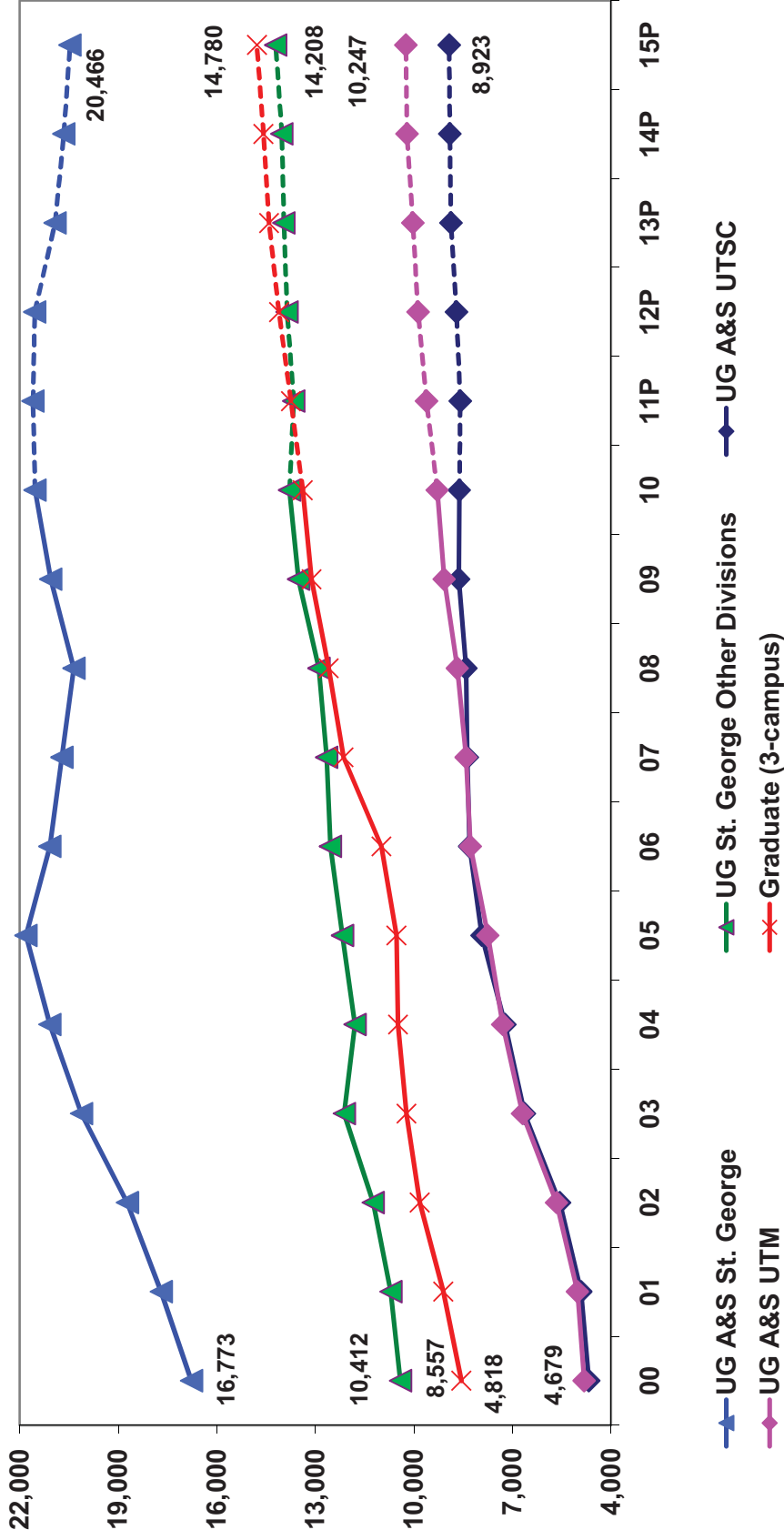
**Chart 1A: FTE Enrolment at the University of Toronto  
1977-78 to 2015-16**



1989-90 to 1997-98 Enrolment Corridor Funding  
 1998-99 to 2000-01 Expansion Funding in selected areas [Access to Opportunities Program (ATOP), BED, and MD]  
 2001-02 to 2004-05 Undergraduate Expansion including accommodation of the Ontario double cohort; Limited graduate expansion  
 2005-06 onwards: Continued undergraduate growth and significant graduate expansion

Note: FTE Enrolment excludes TST

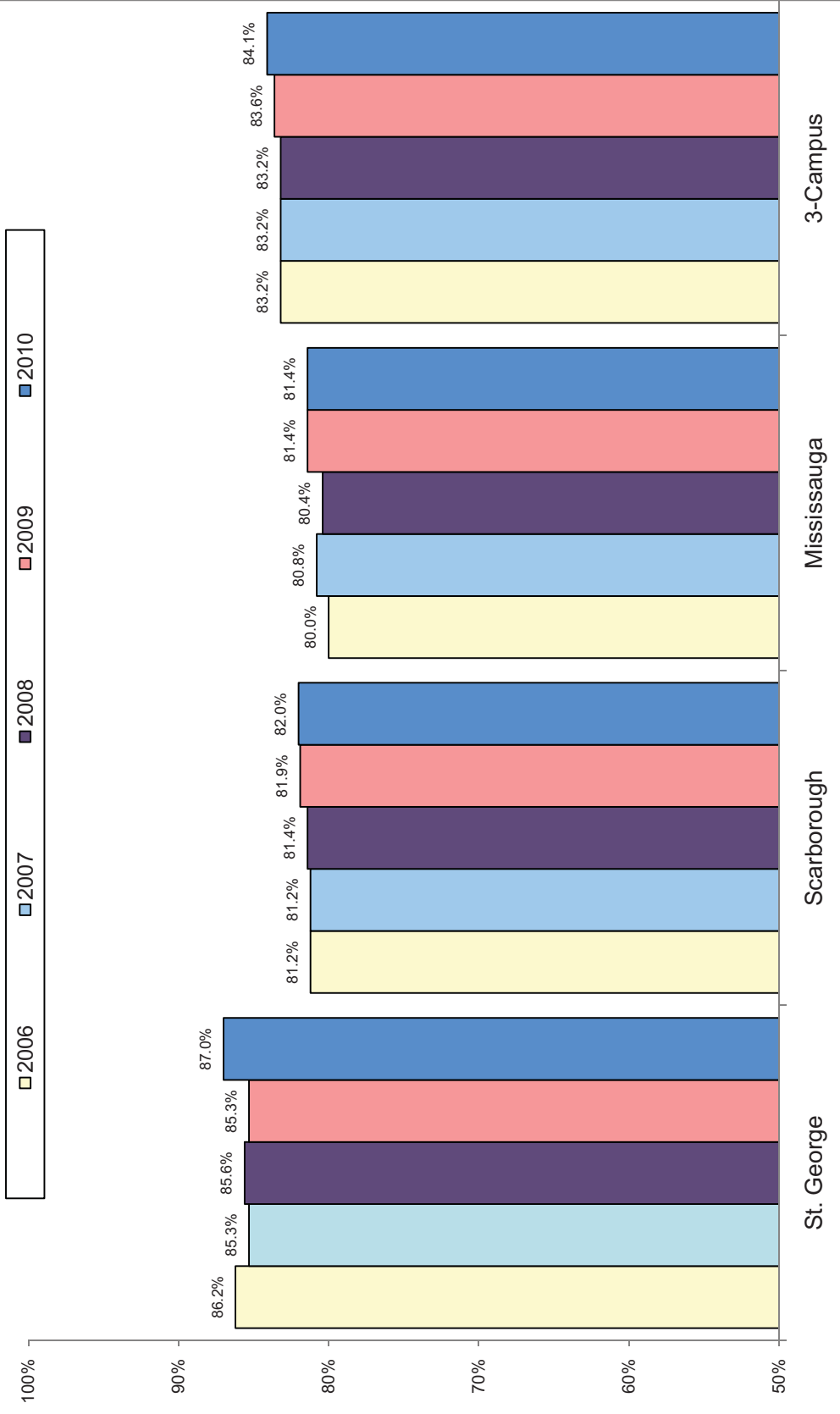
**Chart 1B: FTE Enrolment at the University of Toronto  
2000-01 to 2015-16**



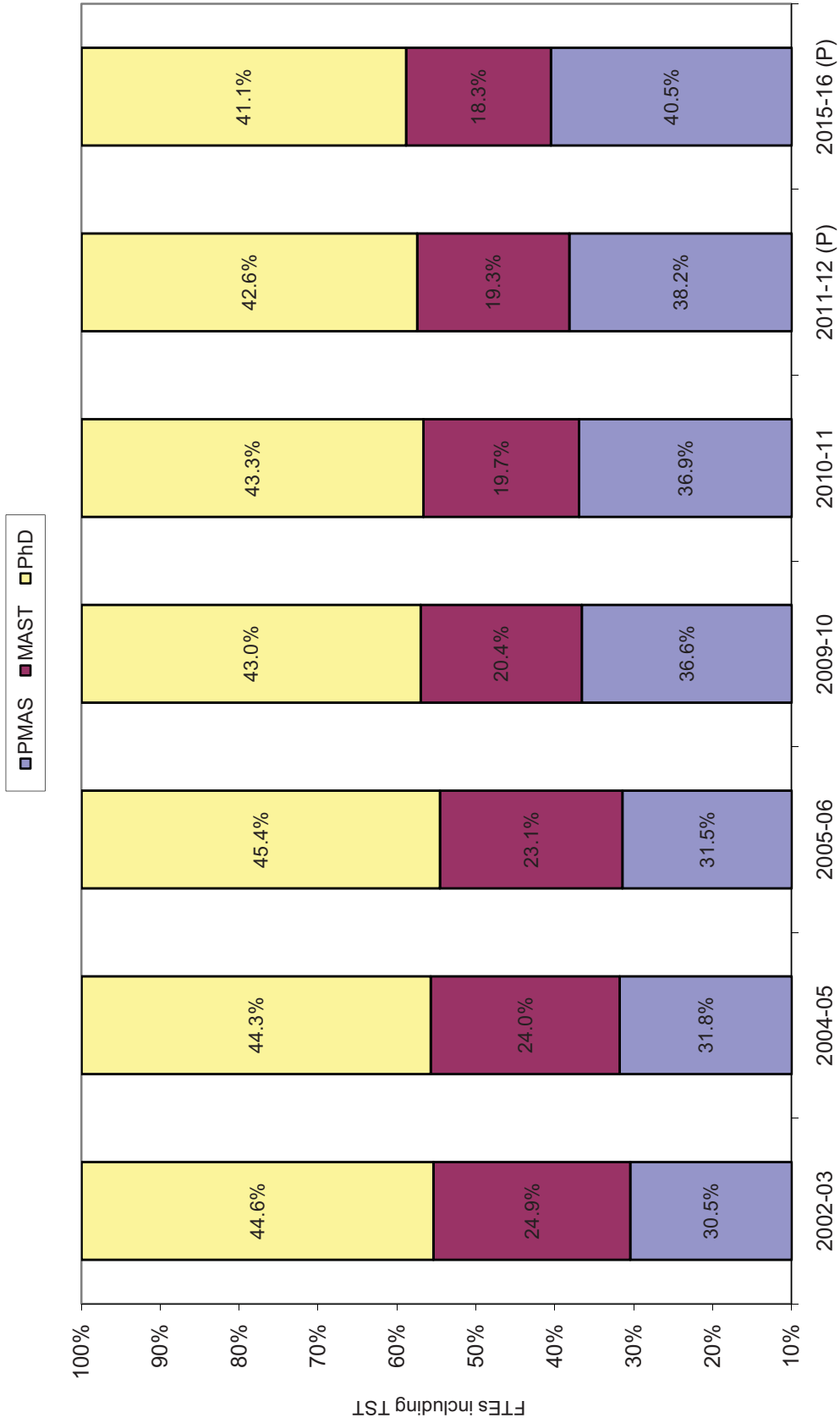
1998-99 to 2000-01 Expansion Funding in selected areas [Access to Opportunities Program (ATOP), BED, and MD]  
 2001-02 to 2004-05 Undergraduate Expansion including accommodation of the Ontario double cohort; Limited graduate expansion  
 2005-06 onwards: Continued undergraduate growth and significant graduate expansion

Note: FTE Enrolment excludes TST

**Chart 2: Entering Grade Averages: Arts & Science by Campus**

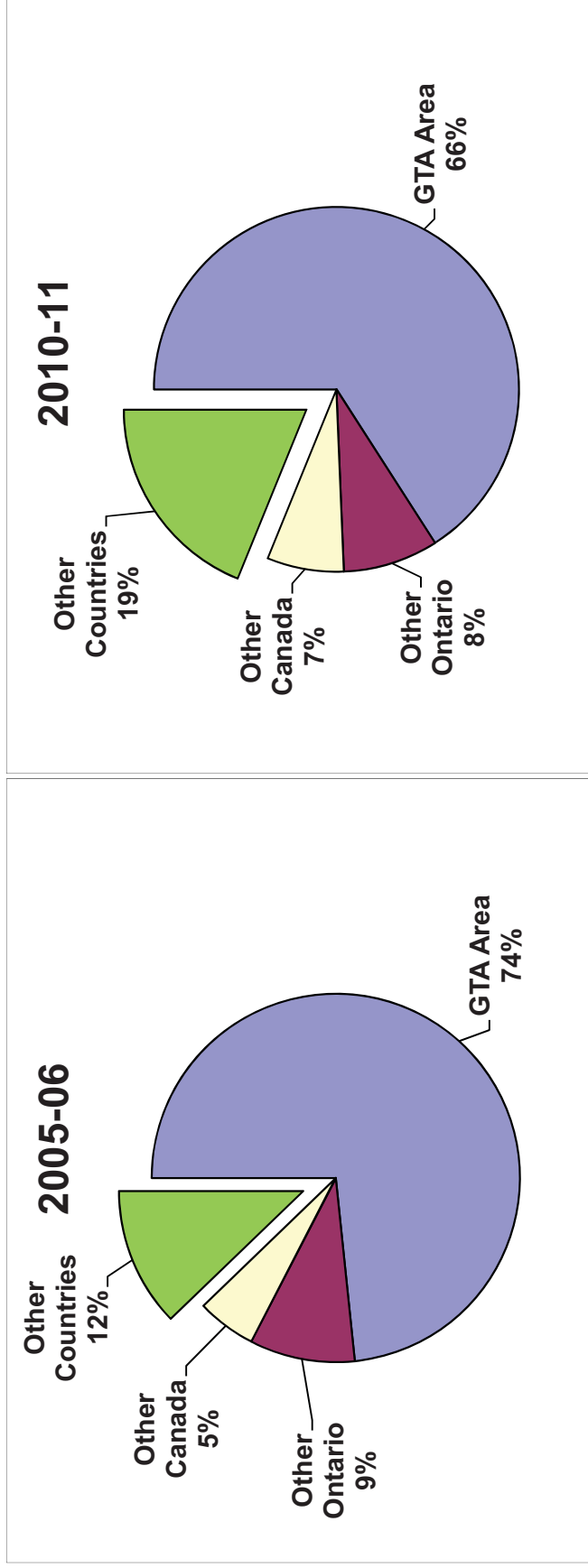


**Chart 3: Graduate Enrolment Balance 2002-03 TO 2015-16**





**Chart 4A: Undergraduate Intake by Geographic Origin**



\* Students' geographic origin determined using "Home province", "County of Residence" and "Admissions Applicant Type" fields in ROSI.

Notes: 1) Undergraduate excludes TST, Transitional Year Program, Academic Bridging Program and Woodsworth diploma & certificate programs.

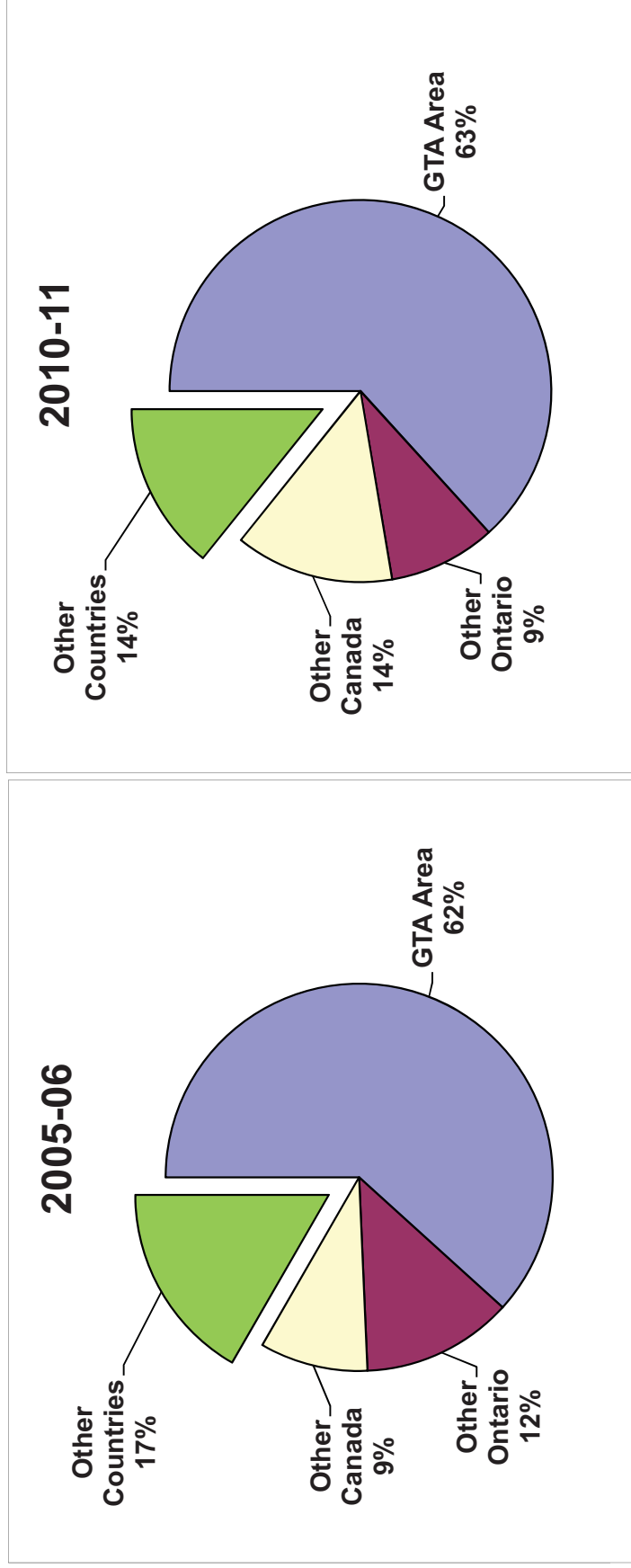
Intake data is not available for Postgraduate Medical Education.

2) 2005-06 was the third year of accommodating the "double cohort" from Ontario secondary schools.

3) Changes to the count program related to selection of permanent address information will contribute to lower GTA figures for 2009-10 onwards.

4) Other Countries includes all international students plus domestic students living abroad.

**Chart 4B: Graduate Intake by Geographic Origin**

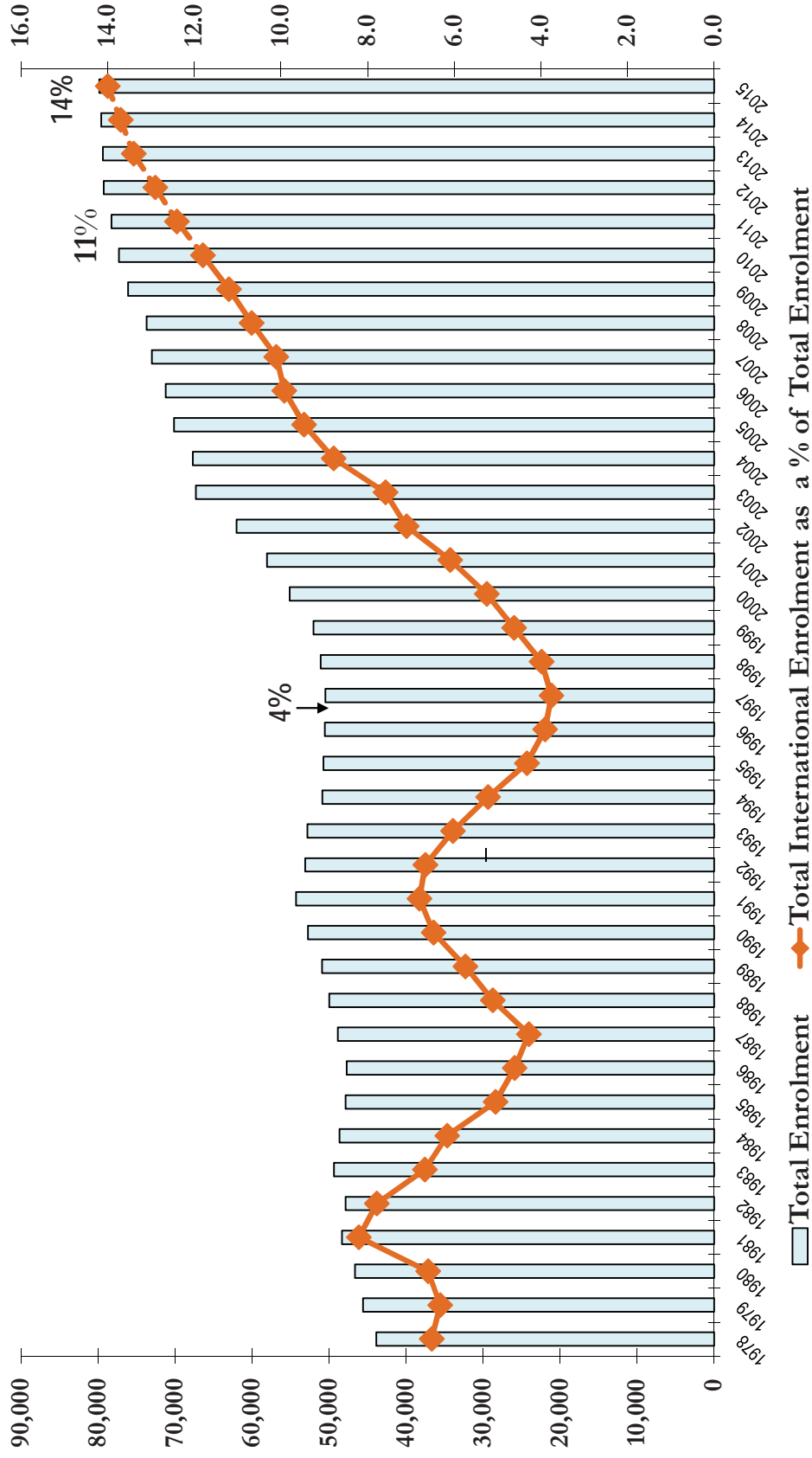


\* Students' geographic origin determined using "Home province", "County of Residence" and "Admissions Applicant Type" fields in ROSI.

Notes:

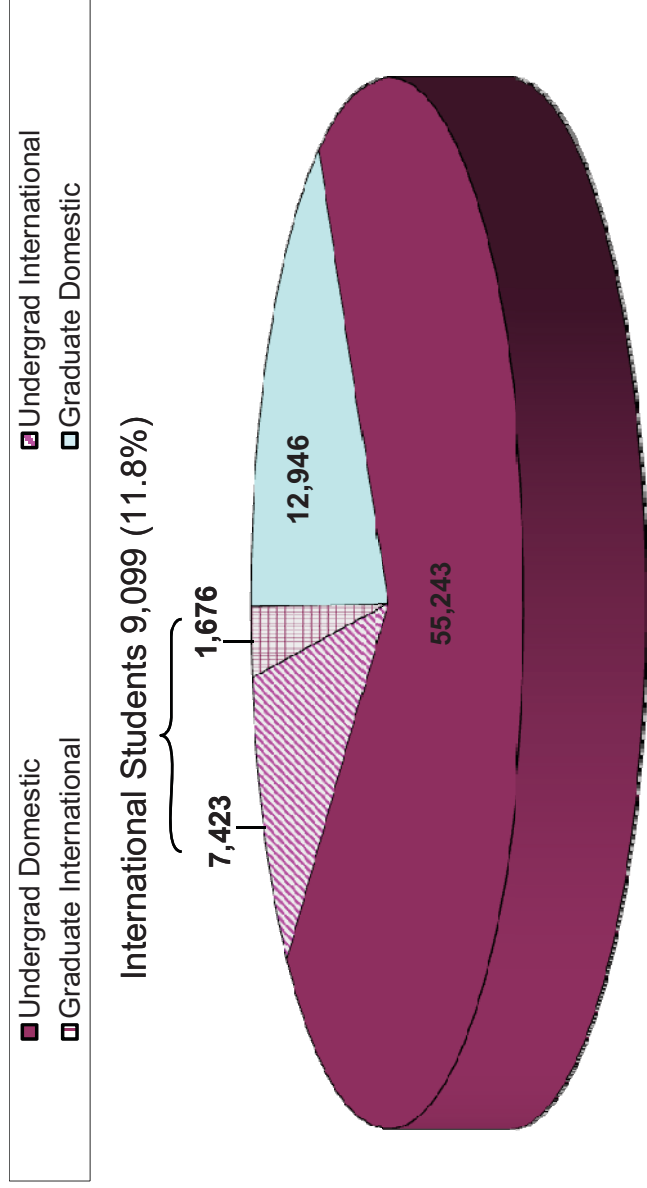
- 1) Graduate data includes diplomas in Medicine and Music. Excludes TST.
- 2) Excludes Summer and Winter new intakes so programs that start especially in the summer such as DIFA, MBiotech, MMPA are understated.
- 3) Changes to the count program related to selection of permanent address information will contribute to lower GTA figures for 2009-10 onwards.
- 4) Other Countries includes all international students plus domestic students living abroad.

Chart 5A: Total Enrolment and Proportion International Enrolment: 1978-79 to 2015-16



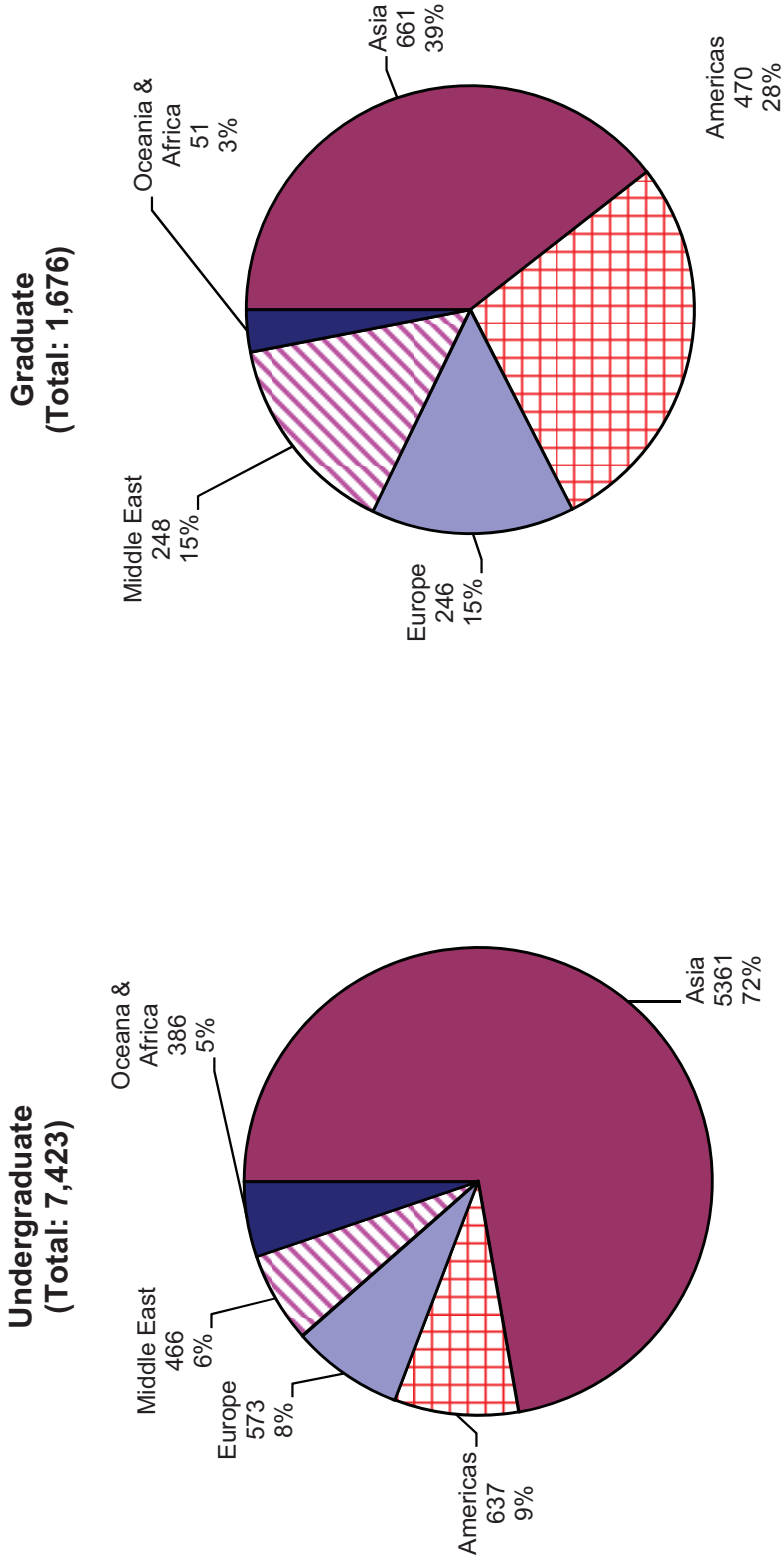
Note: Data excludes TST enrolments.

**Chart 5B: Domestic and International Student Enrollment  
2010-11**



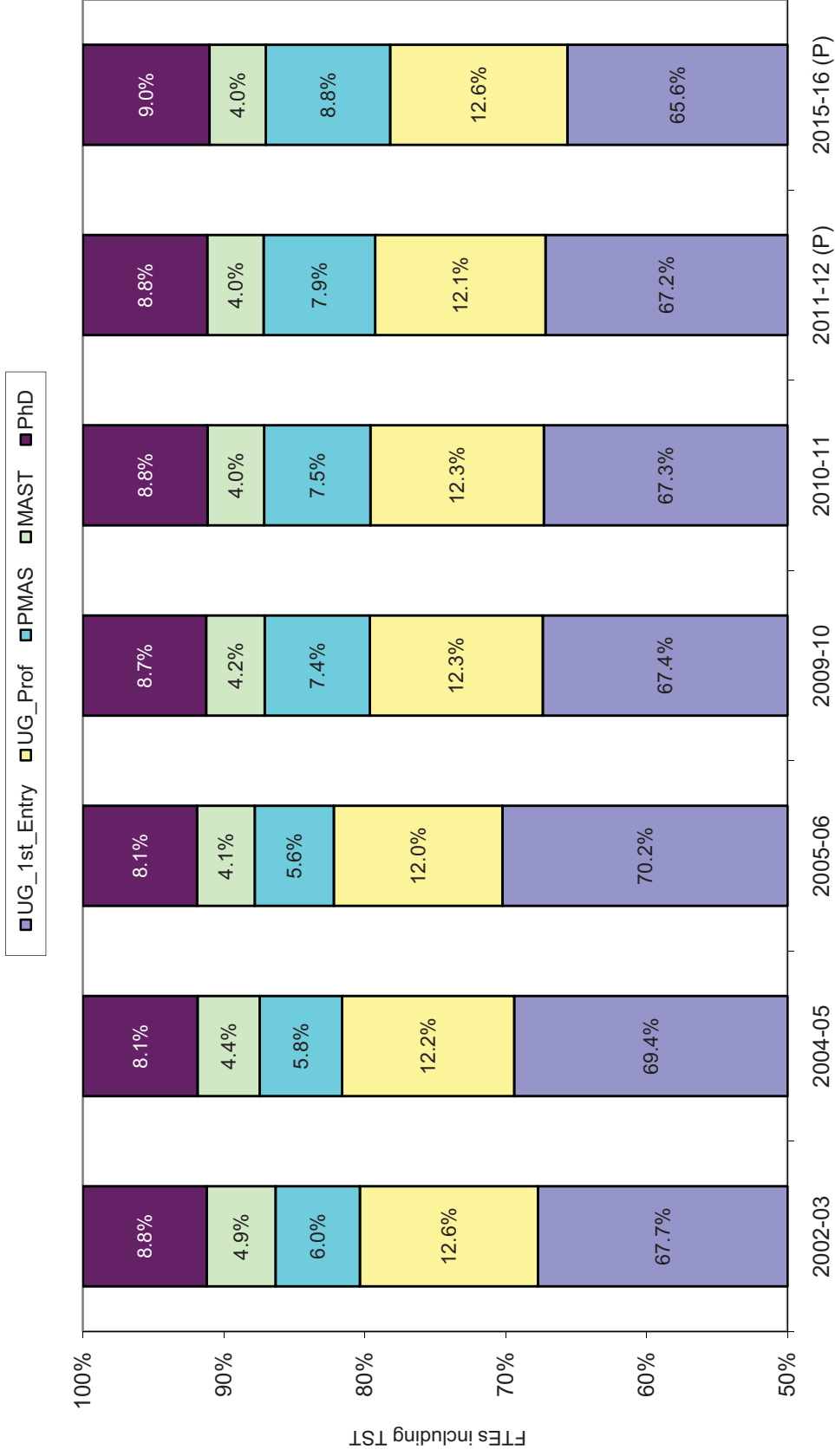
Note: Data excludes TST enrollments.

**CHART 6: 2010-11 INTERNATIONAL STUDENTS BY GEOGRAPHIC REGION**



Note: Geographic Region determined using "Country of Citizenship" field in ROSI.

**Chart 7: Enrolment Balance 2002-03 TO 2015-16**



Note: Includes TST. OISE graduate students included as of 2000-01. P = Projected. Architecture (98-99), and OT/PT (2001-02) programs converted to Professional Masters programs. Additional Qualification FTEs in 97-98 and 2002-03 excluded to provide a consistent time series.