

The *Protocol*

Student Services, CPI and UTI

Presentation to the UTM Campus Affairs Committee

The Protocol

Memorandum of Agreement between The University of Toronto, The Students' Administrative Council, The Graduate Students' Union and The Association of Part-time Undergraduate Students for a Long-Term Protocol on the Increase or Introduction of Compulsory Non-tuition Related Fees

- A formal agreement between the institution's administration and student government representatives
- Assures student involvement in decisions to introduce a new or modify an existing compulsory non-tuition related ancillary fee

The Protocol

Memorandum of Agreement between The University of Toronto, The Students' Administrative Council, The Graduate Students' Union and The Association of Part-time Undergraduate Students for a Long-Term Protocol on the Increase or Introduction of Compulsory Non-tuition Related Fees

Establishes

- *Council on Student Services (COSS) for UT-wide and St. George matters*
- *Quality Services to Students (QSS) for UTM matters*
- *Council on Student Services (CSS) for UTSC matters*

Purpose

- Enhance student experience by promoting efficient and effective student services
- Review the operating plans of these services
- Advise Governance on proposals for the increase, decrease, introduction or elimination of related fees

Protocol fees

Campus Services	Divisional Student Societies	Cross-Divisional Student Societies
UTM Health & Wellness UTM Athletics & Recreation UTM Student Services* UT-wide Sport & Physical Activity UT-wide Hart House	UTM Students' Union (UTMSU) UTM Association of Graduate Students (UTMAGS) CFRE student radio The Medium student newspaper Athletic Council Residence Council MMPA Student Society	Association of Part-Time Undergraduate Students (APUS) University of Toronto Graduate Students' Union (UTGSU) CIUT Community Radio The Varsity Medical Society

Protocol fees

Campus Services Fees

UTM Health & Wellness

UTM Athletics & Recreation

UTM Student Services*

UT-wide Sport & Physical Activity

UT-wide Hart House

Career Centre

Child Care Support

Shuttle Services (including fee adjustments for graduate and medical programs with full-year enrolment)

Family Care

International Education Centre

Student Life Initiatives

Handbook & Communications

Student Group Space

Alcohol Education & Monitoring

QSS advice

Student advice is sought through advisory groups, then considered by QSS voting members.

- If the majority of student members **consent** to a fee increase, administration may recommend it to CAC & CC.
- If the majority of student members **do not consent** to a fee increase, administration may recommend an increase to CAC & CC based on two indexes.
 - *Consumer Price Index* as described in the University of Toronto's Long-range Budget Projection Assumptions and Strategies
 - *University of Toronto Index*, calculated separately for each service fee, that accounts for changes in salary and benefit costs, revenue from other sources, occupancy costs, and changes in enrolment.

How indexed fees are calculated

Previous year's fee

Deduct any expiring fee increases

Calculate and add UTI for each fee

Add CPI

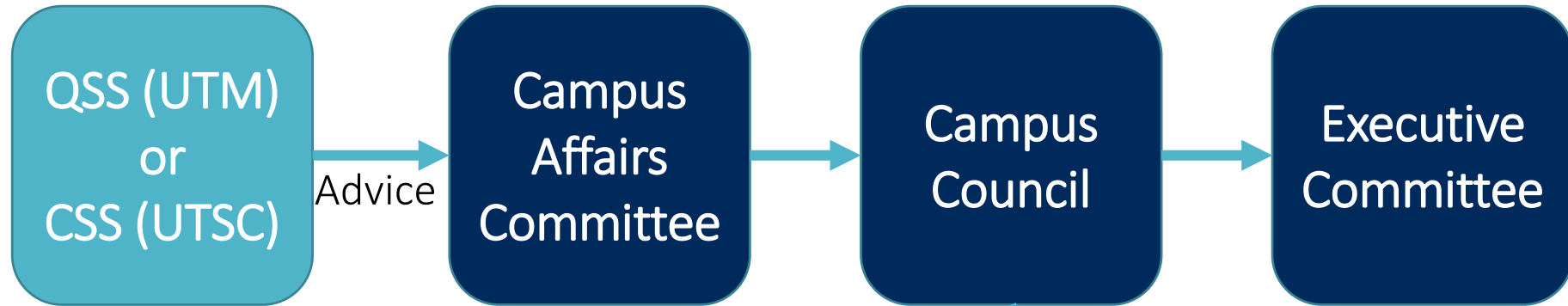
New fee eligibility*

*Maximum increase that can be sought without COSS/QSS/CSS endorsement, with the higher index as a temporary increase and the lower as a permanent increase

Governance path

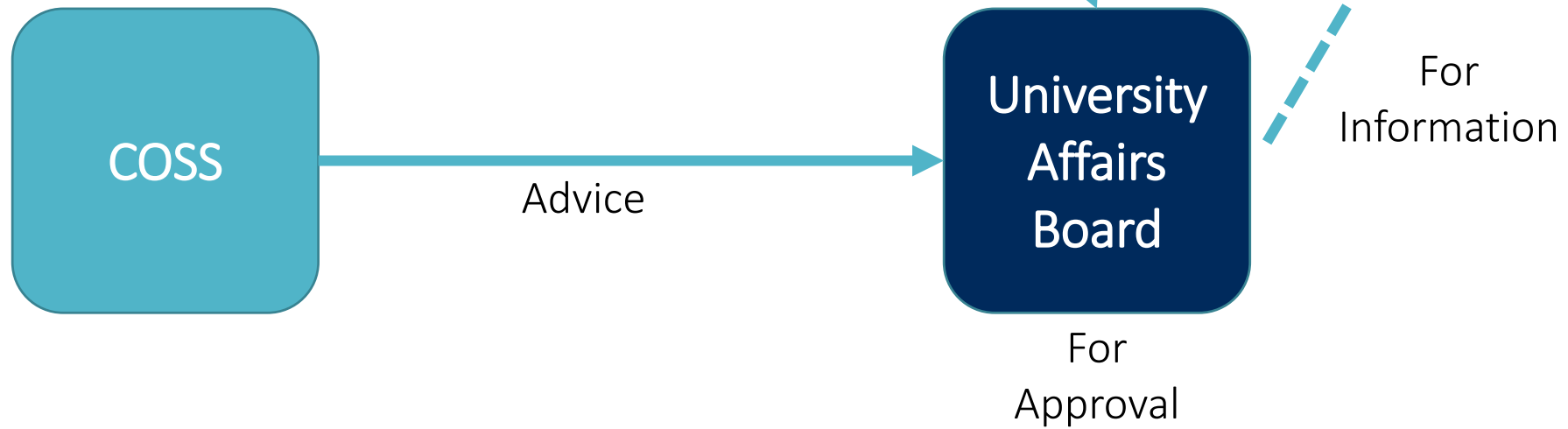
UTM & UTSC

Fees



St. George & University-wide

Fees



Status

- Meetings of QSS and its advisory groups are currently underway.
- Fee increase proposals will be presented for consideration at the next Campus Affairs Committee.
- A working group will be updating the QSS Terms of Reference next term.