

UTM MAJOR CAPITAL PROJECTS: Status Report

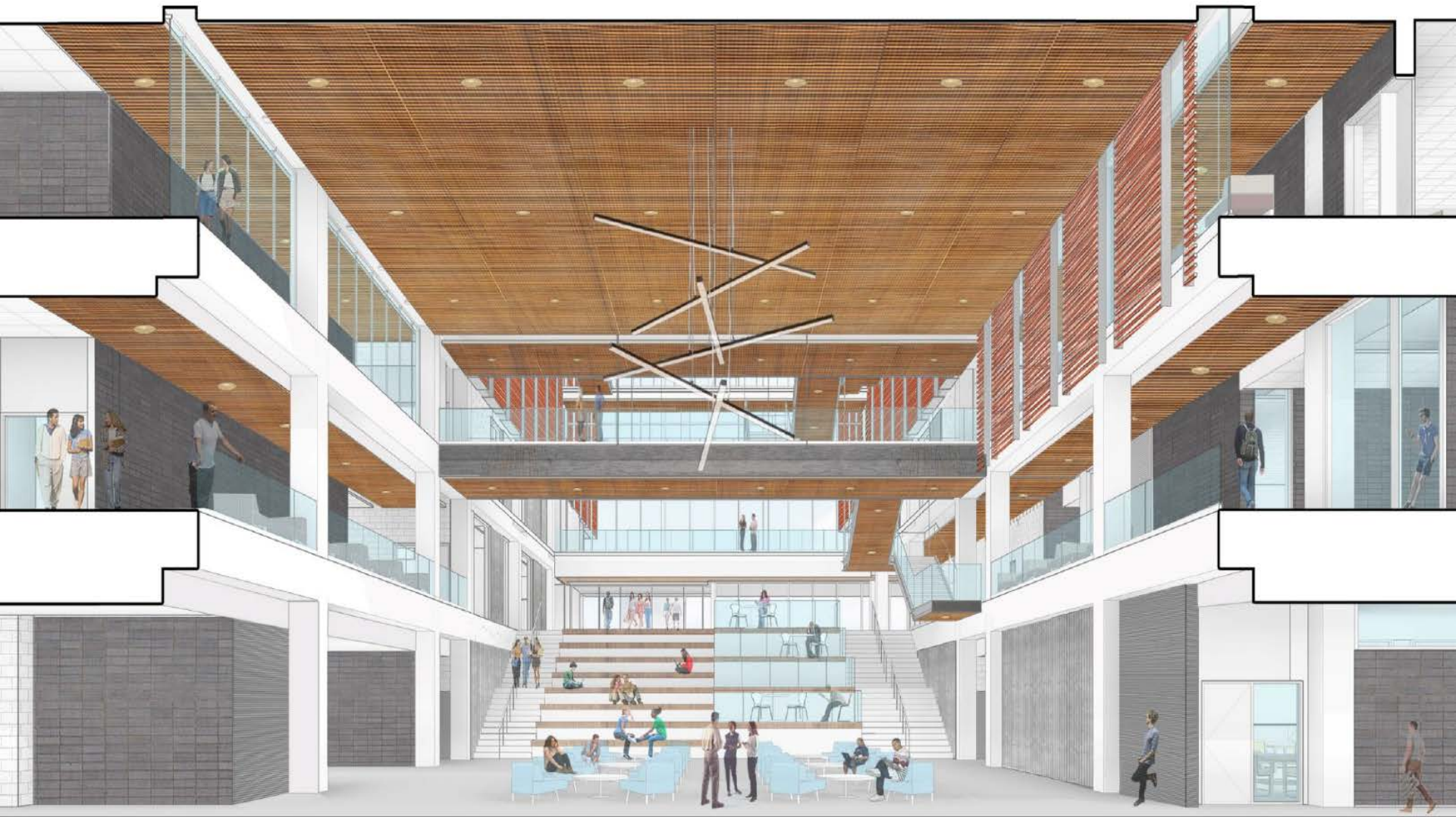
UTM Campus Affairs Committee
April 24, 2017

A decorative graphic consisting of several horizontal lines of varying lengths and colors (teal, light blue, white) extending from the right side of the slide towards the center.

IN-CONSTRUCTION: NORTH2

- Design-build: Stuart Olson/Perkins Will
- \$121.2 million (Const. = \$89m)
- 10,247 nasms (220,595 gross square feet)
- English & Drama; Sociology; Political Science; Philosophy; Language Studies; Historical Studies; (offices + research space)
- Classrooms & Study Space
- Facilities Management & Planning
- Special event space





North Hall Looking West

North2 STATUS

- **Substantial Completion: May 1, 2018**
- **Occupancy: June 5th**
- **Currently: 4 – 6 weeks behind schedule**
- **Recovery Schedule in Process**
- **Tracking On-budget**

North2 STATUS



North2 STATUS





SIF PROJECTS

IN-CONSTRUCTION: RESEARCH, "SIF"

- Backup Power Expansion + Retro-fit
- Electrical Power Distribution
- HVAC Renewal + Distribution
- Two Research Lab renovations (1st & 3rd floor)
- Fume hood replacement

IN PLANNING: DAVIS2

- **First approved-in-principle as phase of Davis re-development in 2006**
- **A new “living room” for the campus:**
 - Seating for 1,000; permanent food court;
 - 920sm new space + 2,814sm renovated
 - new front/main entry to Davis
 - Revised drop off + transport hub

IN PLANNING: DAVIS2

- **Project Planning Report to Governance, Cycle 1**
- **Schematic Design (concepts) complete**
- **Design architect engaged(Moriyama/Teshima)**
- **Design Development underway: target
November, 2017**
- **Award construction: January, 2018**
- **Full occupancy: July, 2019**

2.4 Exterior View - Front Entry

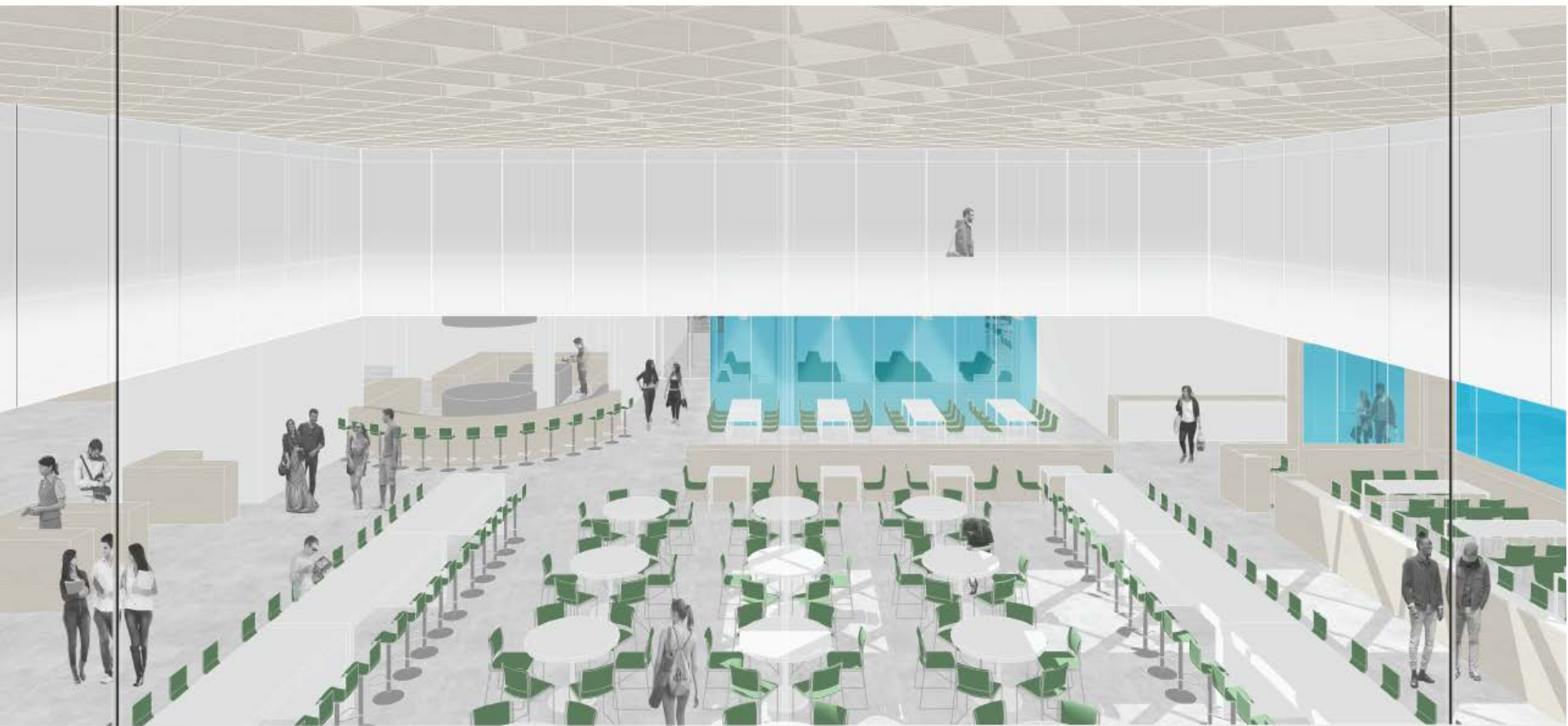




Main Entry

2.5 Interior Views





Meeting Overview B

2.6 Exterior Views - Courtyard



IN PLANNING: ROBOTICS

- **Flying lab**
- **Ground vehicles lab**
- **Computational lab**
- **Storage space**
- **Offices for faculty/graduate students**
- **Office support space**

Robotics Project Assumptions - Site



Robotics Project Assumptions

Level 2 Capital Project (< \$10m)

Est. 784 nasm (14,515 gross square feet)



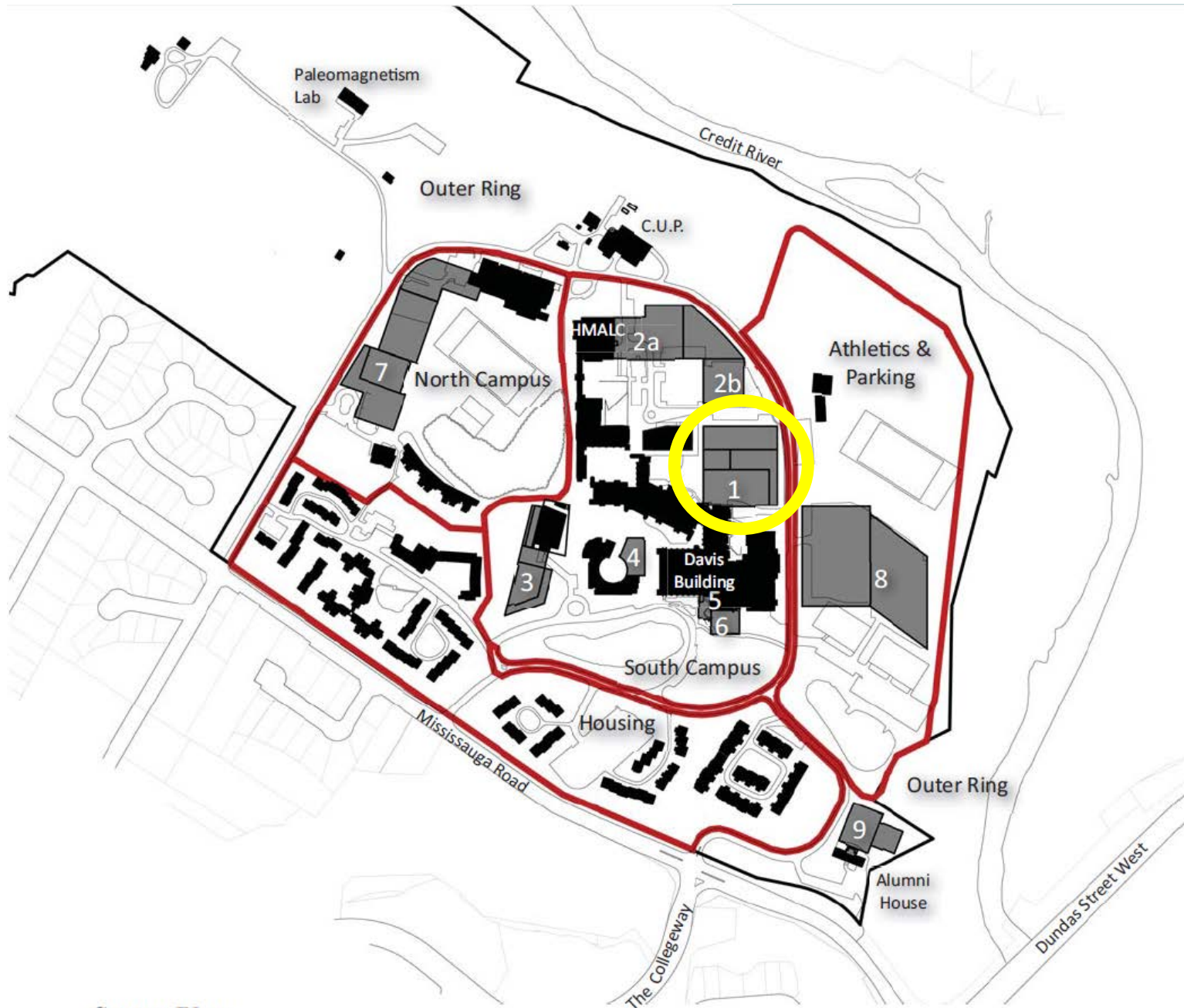
Robotics Project: Status & Schedule

- Formal Project Planning Committee - approved
- Initial layout and site analysis - completed
- Preliminary Consult, City/CVCA/MOE April 7th, 2017
- Project Planning Report to Governance: Cycle 1
- Advance Architect/PM selection July-August, 2017
- Design Development September-November, 2017 (latest)
- Construction March, 2018 – December, 2018 (latest)
- Occupancy January, 2019 (latest)

IN PLANNING: SCIENCE BUILDING

- Previous Planning: 2001; 2009 (9,350 nasm)
- Current Plan: 15,476 **gsm** (**166,582** gross square feet)*
- Centre for Medicinal Chemistry
- Wet research lab cluster: light/medium/heavy (1 to 8 fume hoods); modular; flexible
 - **CPS/Bio/Forensic Sciences**
- Research Computing Data Centre + Facilities Support Space

*Please note that the correct number is 15,476 gsm (not nasm) and 166,582 gsf (not 360,000) as presented.



Sector Plan

IN PLANNING: SCIENCE BUILDING

MAJOR INFRASTRUCTURE UPGRADES

- CUP – chillers, boilers**
- Additional electrical sub-station + emergency generator**
- Expanded loading dock/stores (in adjacent Davis Building)

** Overlap with building Design
Development to complete in advance

SCIENCE BUILDING: TARGETS/STATUS

- **Formal Project Planning Committee: approved**
- **Budgeted TPC Inviolable (worked back)**
- **RDS confirmation: in process**
- **Refine costing: July, 2017**
- **Project Report to Governance: Cycle 1**
- **Design: Summer, 2017 (begin)**
- **Award construction: Summer, 2018**
- **Occupancy Target: August - December, 2020**

MAJOR CAPITAL PROJECT REPORT

QUESTIONS