

UTM Campus Council February 1, 2017



UNIVERSITY OF
TORONTO
MISSISSAUGA

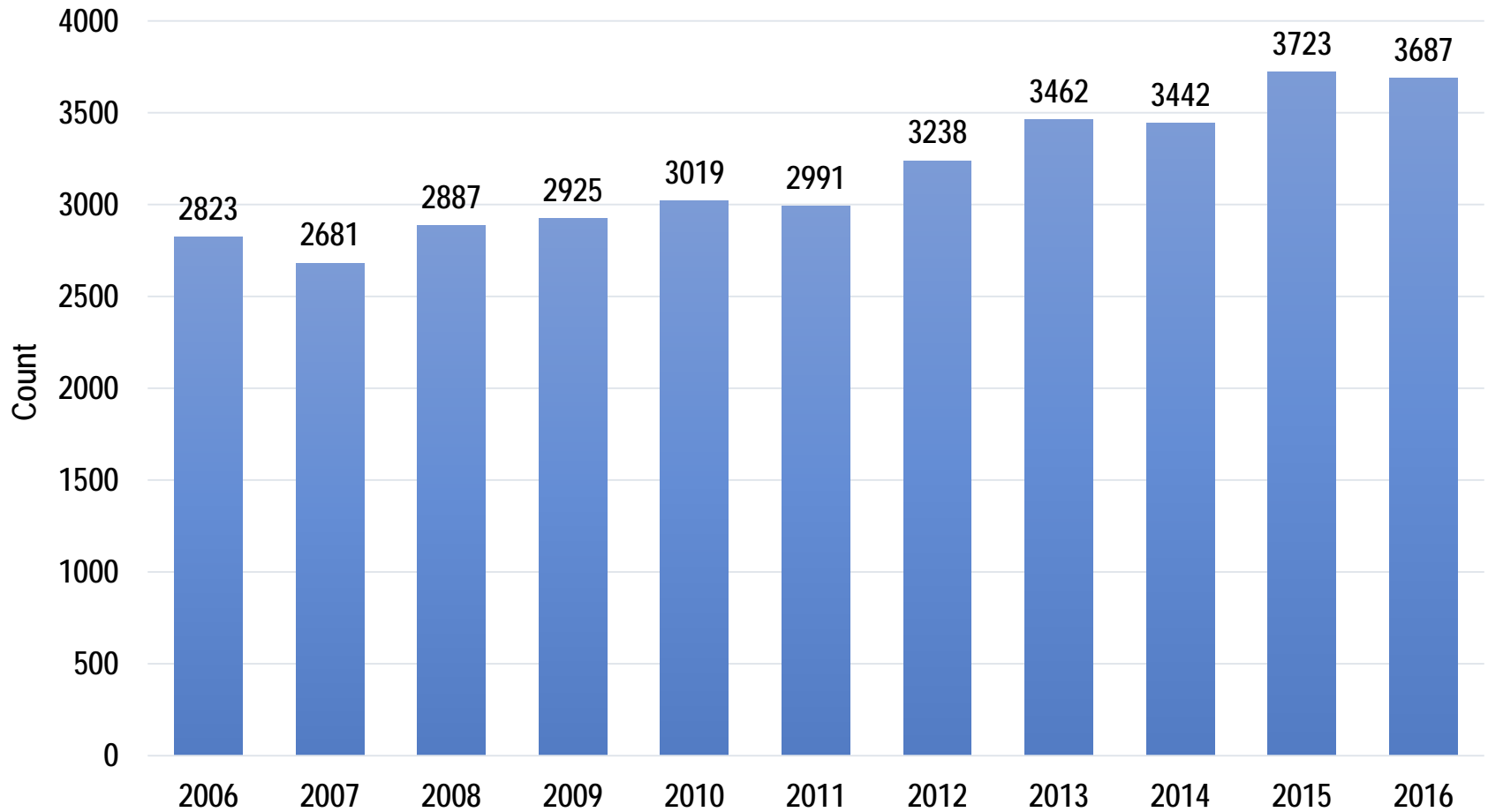
Diane Crocker

Registrar and Director of Enrolment Management





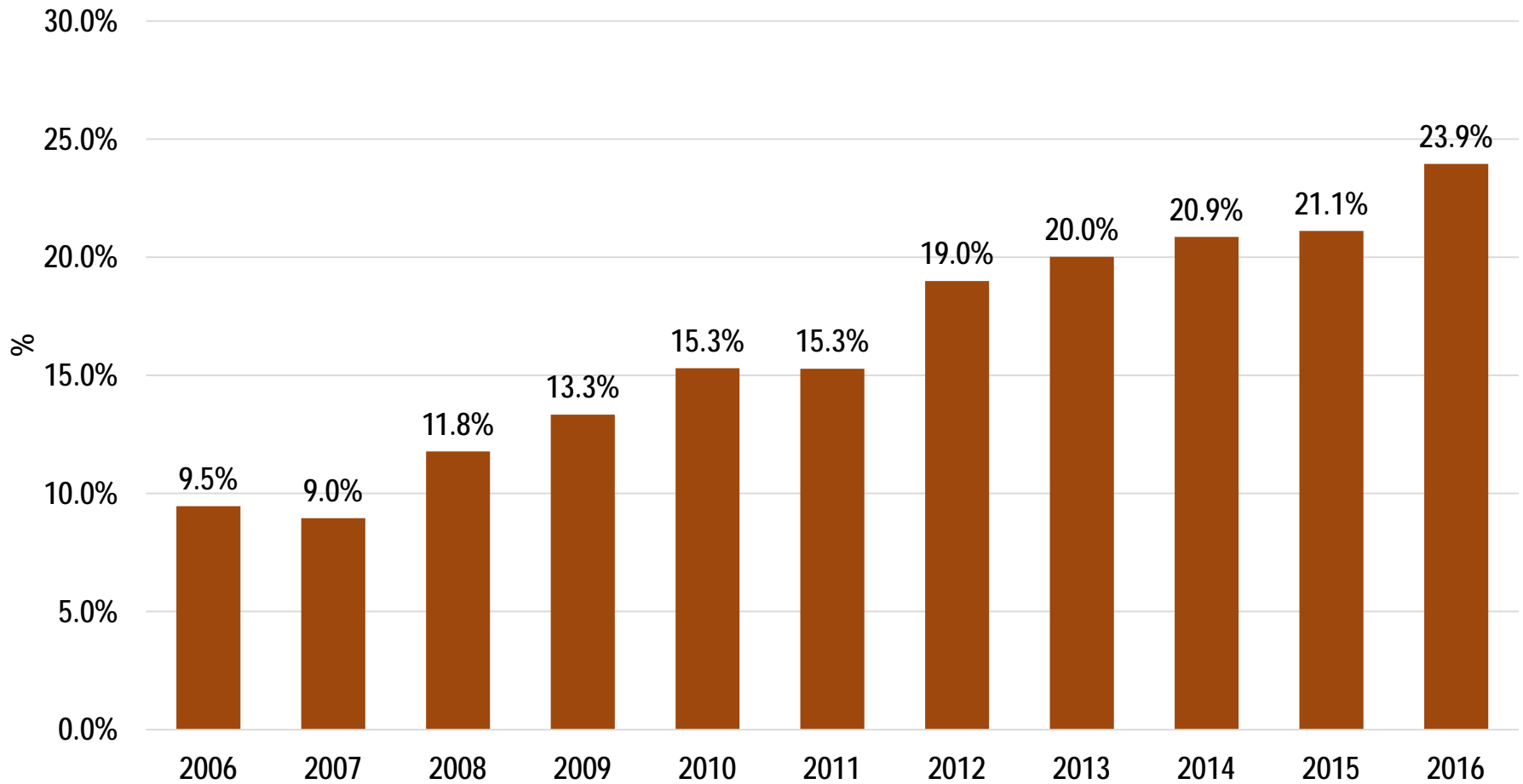
Total New Intake Fall 2006-2016



Source: UTBI at Count Date



New Intake - % International Fall 2006-2016



Source: UTBI at Count Date



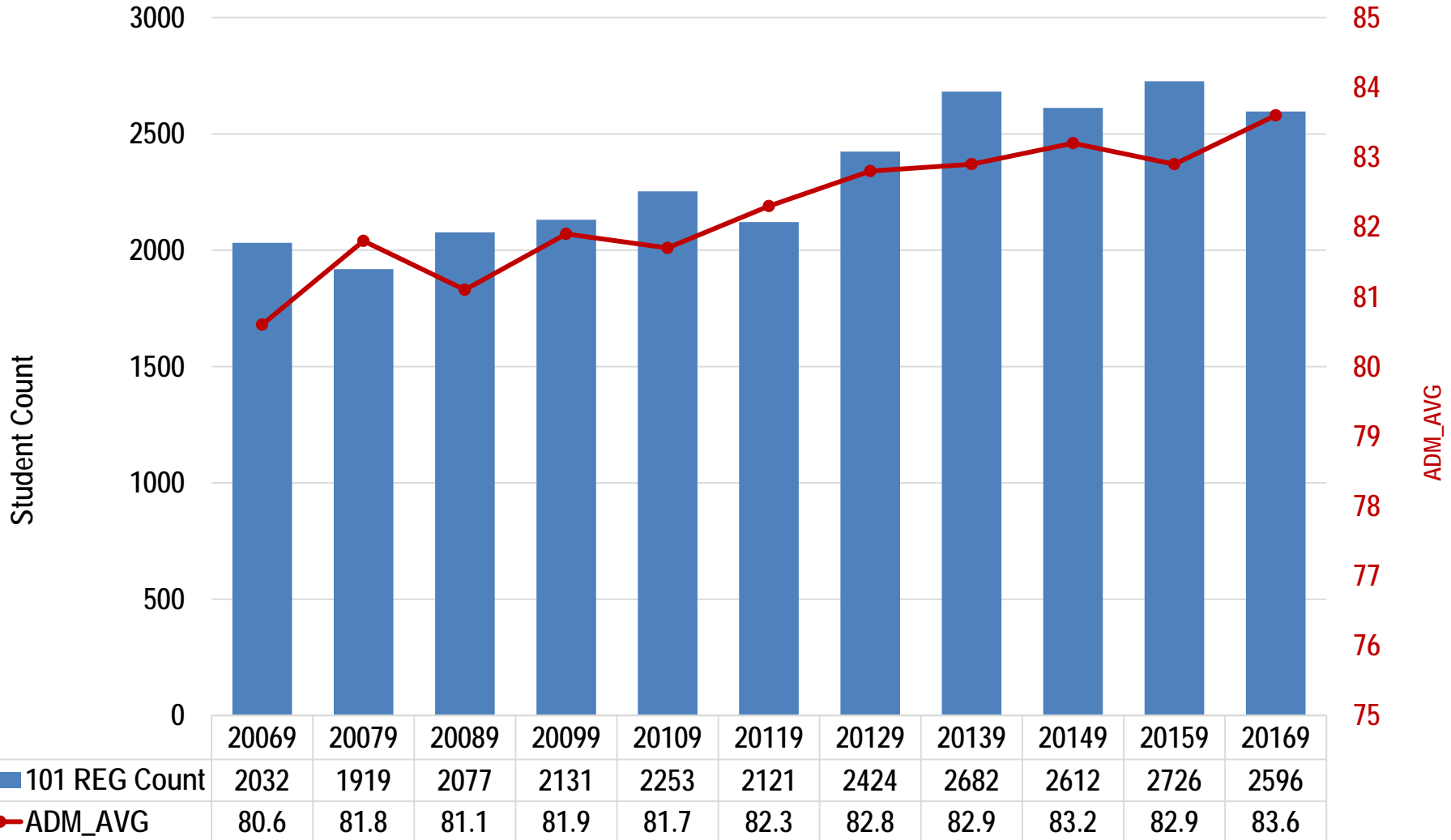
Fall 2016 New Intake Citizenship

Country of Citizenship	Count	%
Canada	2411	64.2%
China	633	16.9%
India	80	2.1%
Pakistan	61	1.6%
Korea (South)	35	0.9%
Nigeria	32	0.9%
U.S.A.	28	0.7%
Hong Kong	27	0.7%
Egypt	25	0.7%
Philippines	20	0.5%
Taiwan	17	0.5%
Iraq	14	0.4%
Vietnam	14	0.4%
Grand Total	3753	100.0%

Source: ROSI, January 5th, 2017



20069-20169 New Intake - Ontario HS & Admission Average

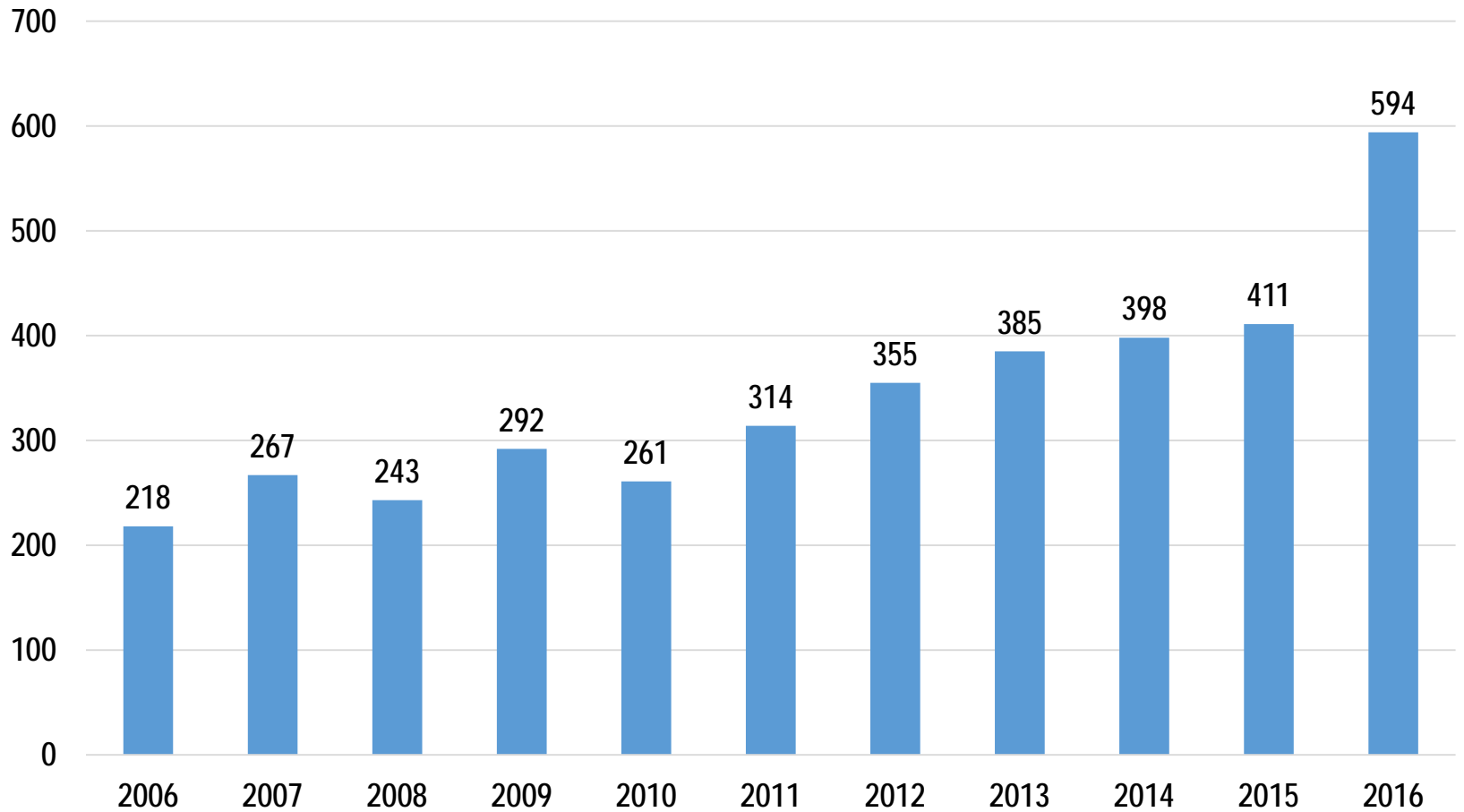


Source: UTBI at Count Date



Fall 2006-2016 OUAC 101 Entrance Scholarship

Admission_Average $\geq 88.0\%$



Source: UTBI at Count Date



Fall 2016 New Intake Demographics

Age	Count	%
16	4	0.1%
17	89	2.4%
18	2320	61.8%
19	737	19.6%
20	253	6.7%
>20	350	9.3%
Grand Total	3753	100.0%

Source	Count	%
Ontario Secondary School (Direct Entry)	2442	65.1%
Other Canadian Secondary School	279	7.4%
University Transfer from Canada	193	5.1%
Overseas Int'l Baccalaureate	114	3.0%
Foreign University	96	2.6%
College Transfer from Canada	56	1.5%
Foreign Secondary School	50	1.3%
Pre-University Program - U.of Toronto	39	1.0%
Other	484	12.9%

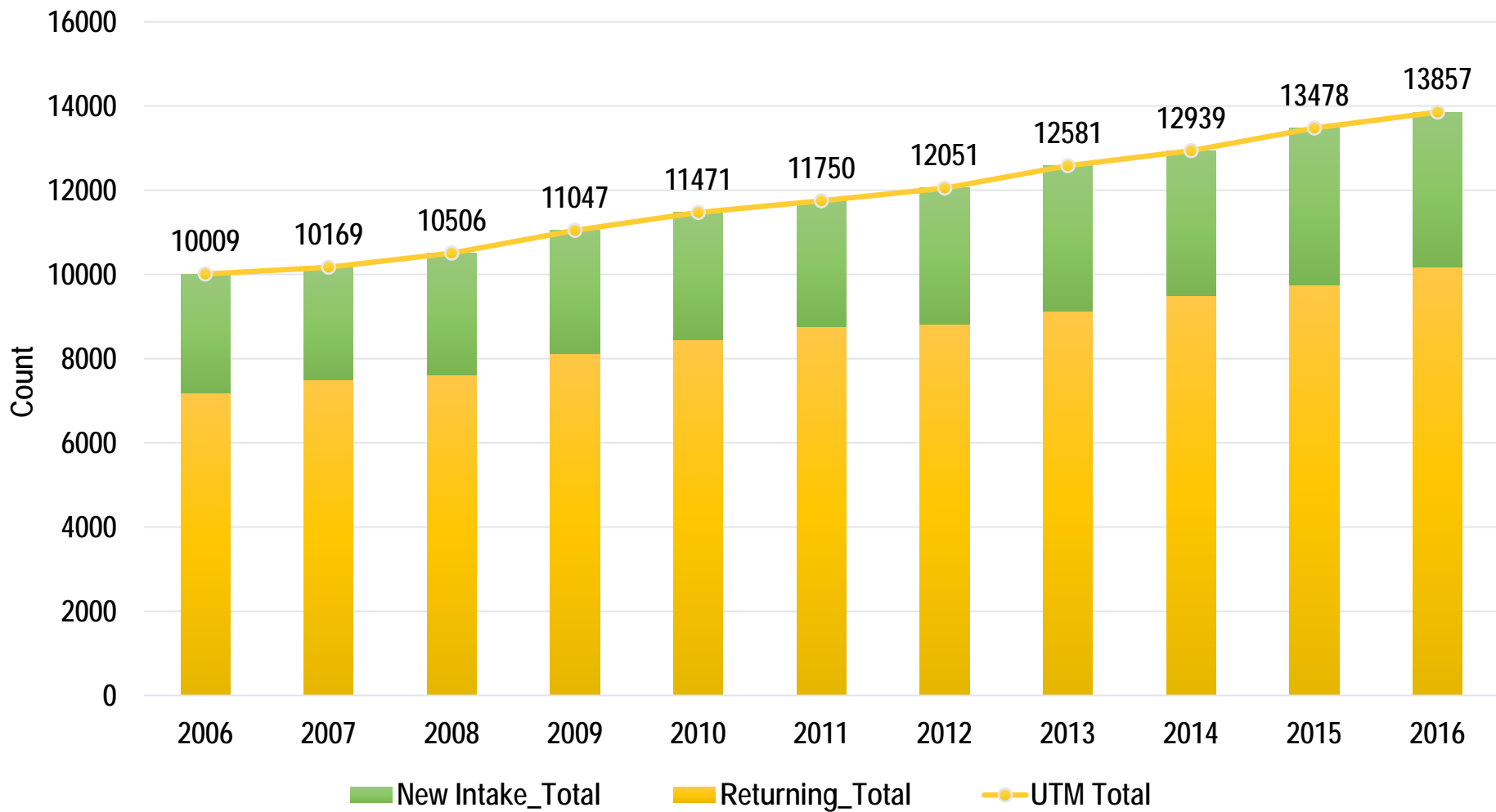


Fall 2016 New Intake Program of Admission

Description	Count	%
Social Sciences	749	19.96%
Commerce	505	13.46%
Computer Sc. Math.& Stats	479	12.76%
Life Sciences	479	12.76%
Management	233	6.21%
Comm, Culture & Info Tech	214	5.70%
Humanities	206	5.49%
Psychology	206	5.49%
Chemical & Physical Sciences	154	4.10%
Forensic Science	140	3.73%
Visual Studies	53	1.41%
Theatre & Drama	21	0.56%
Upper Year Transfer	240	6.39%
Non-Degree(Incoming Exchange)	30	0.80%
Non-degree Student	29	0.56%
Non-degree Bridging Pathway	15	0.40%



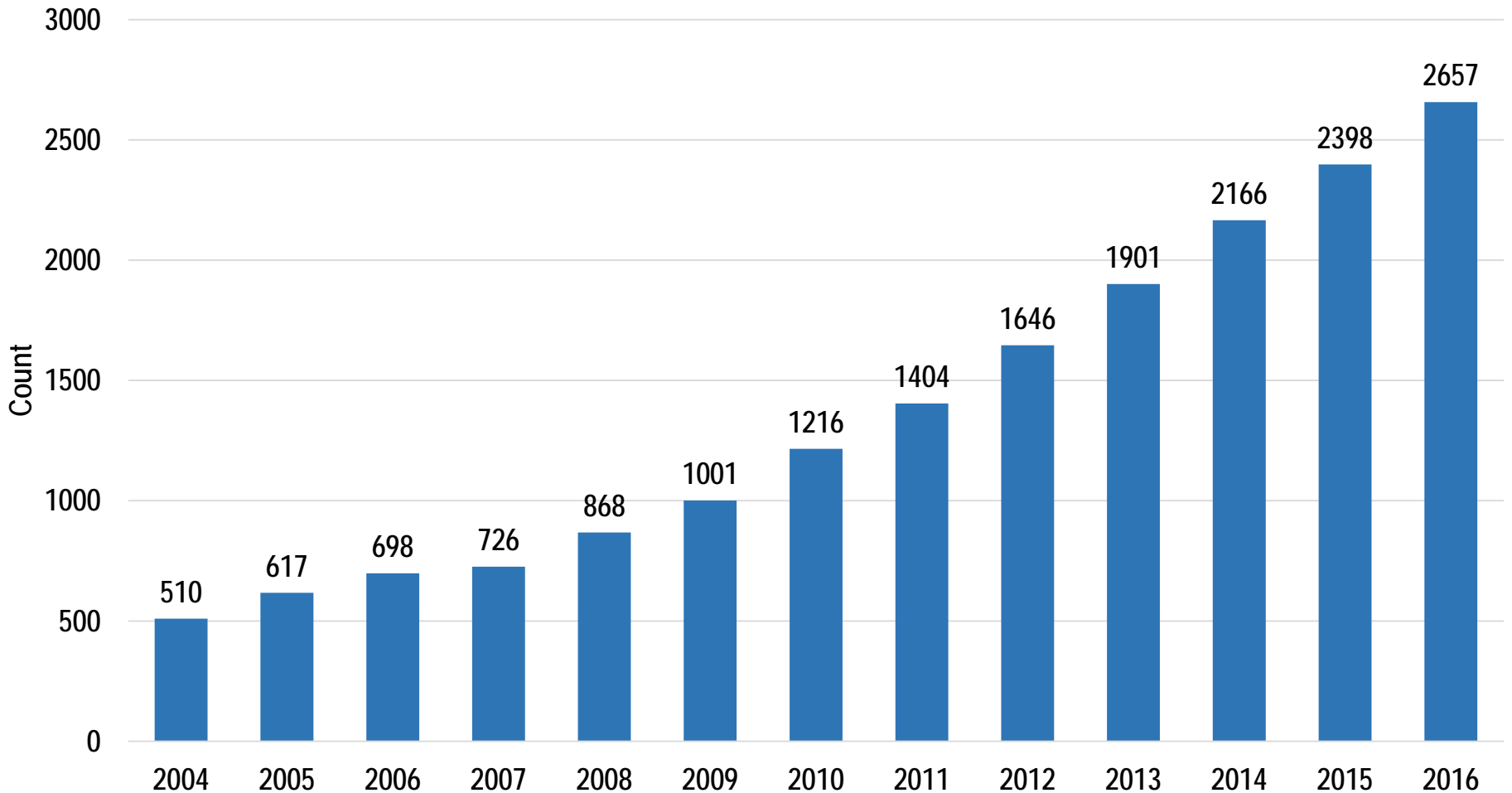
Total Headcount - New Intake & Returning Fall 2006-2016





2004-2016

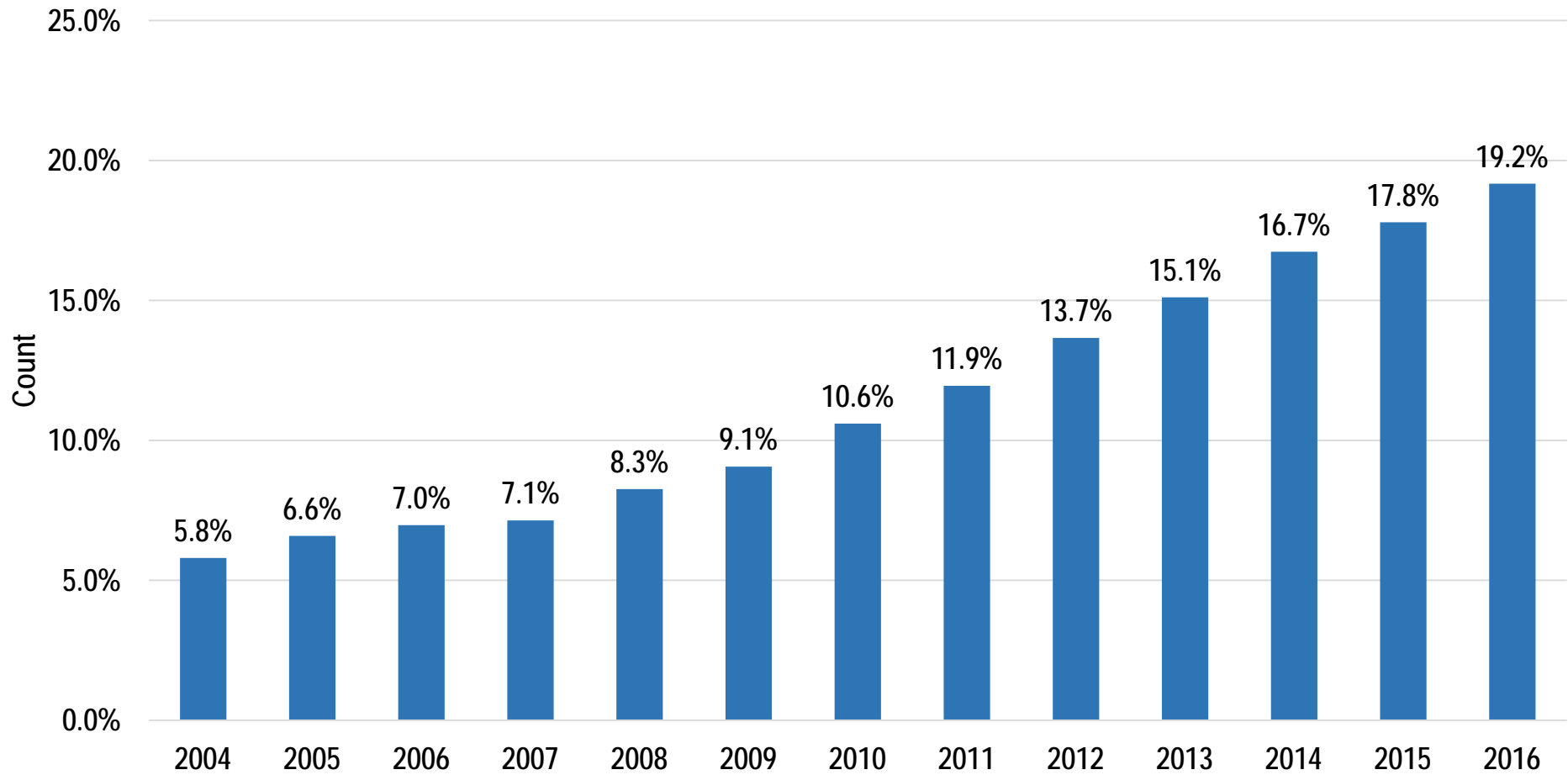
Total Headcount International Students





UTM Fall 2004-2016

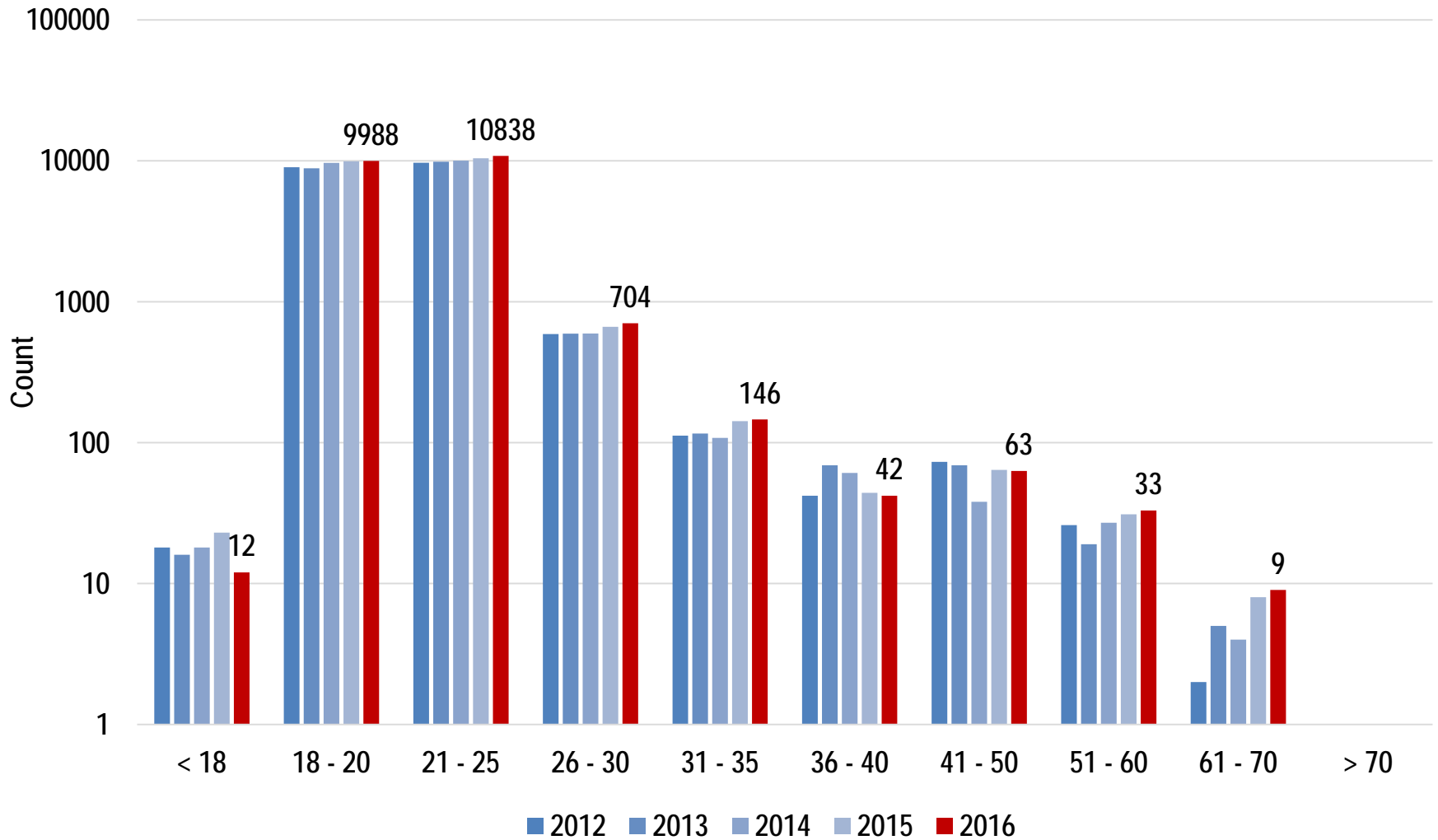
% international students





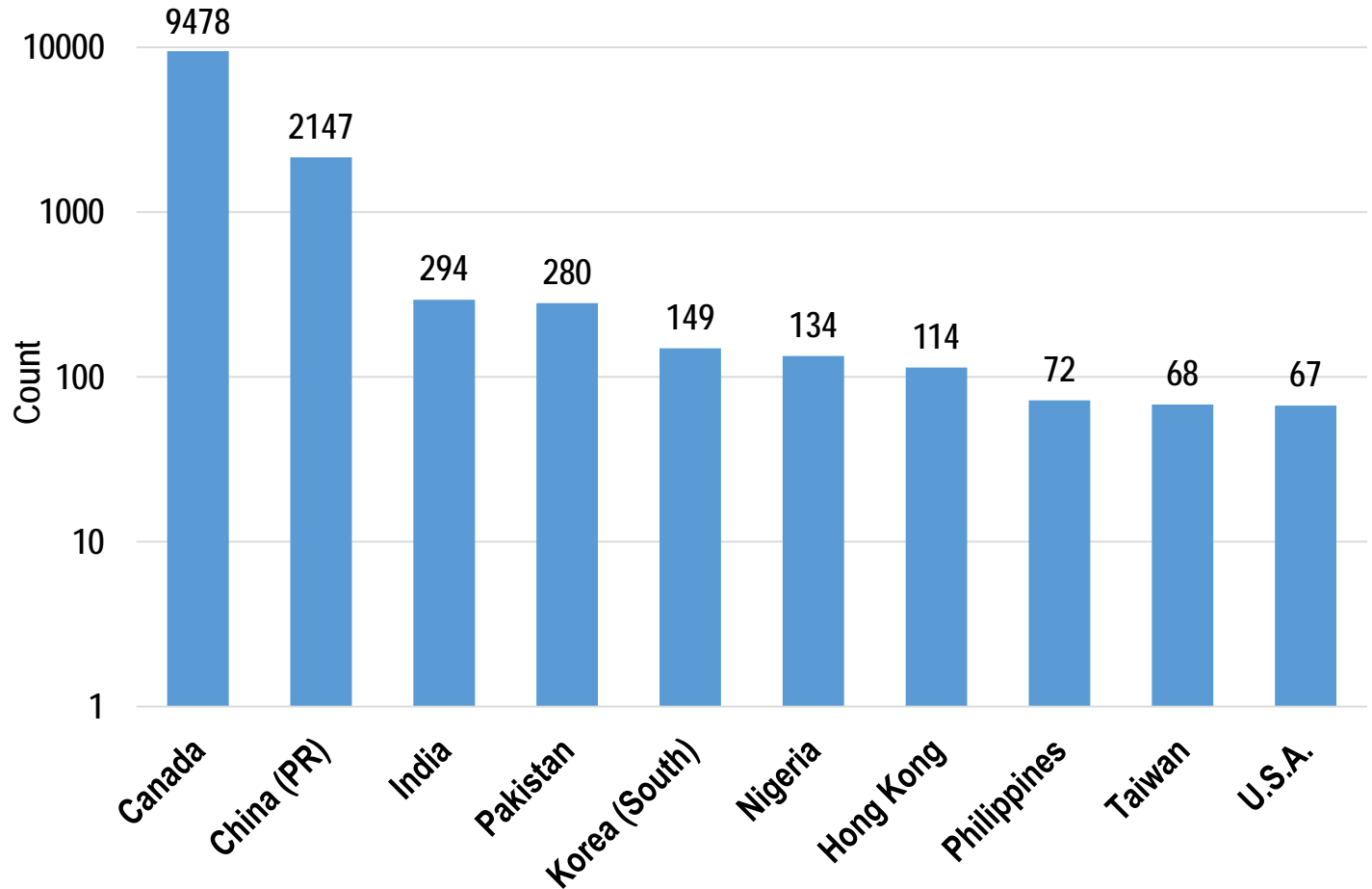
Age Fall 2006-2016

(note logarithmic scale)



Country of Citizenship Fall 2016

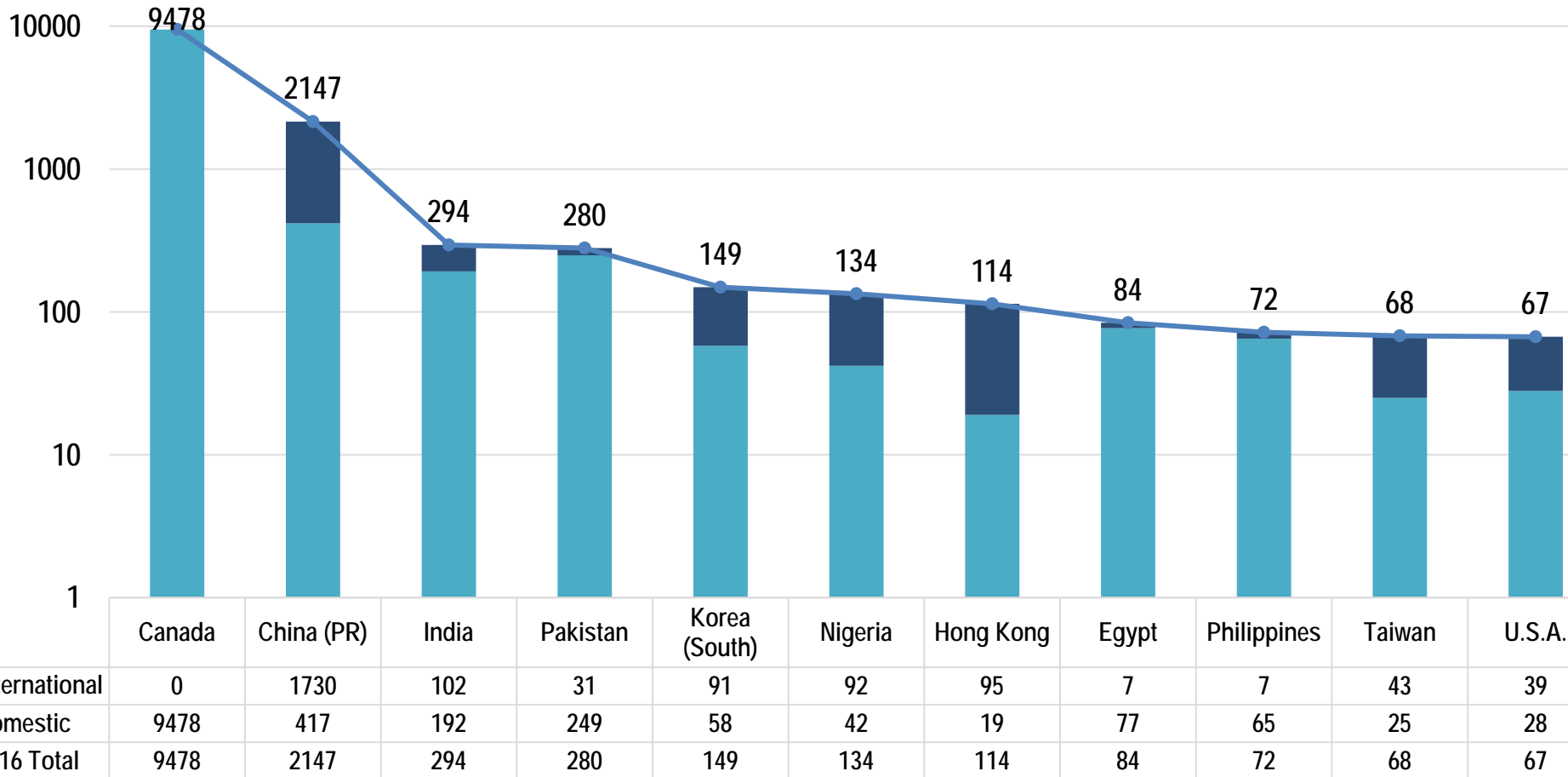
(note logarithmic scale)



Fall 2016	%
Canada	68.4%
China (PR)	15.5%
India	2.1%
Pakistan	2.0%
Korea (South)	1.1%
Hong Kong	0.8%
Nigeria	1.0%
Taiwan	0.5%
Philippines	0.5%
Bangladesh	0.3%
U.S.A.	0.5%
Country_Total	100.0%

Country of Citizenship Fall 2016

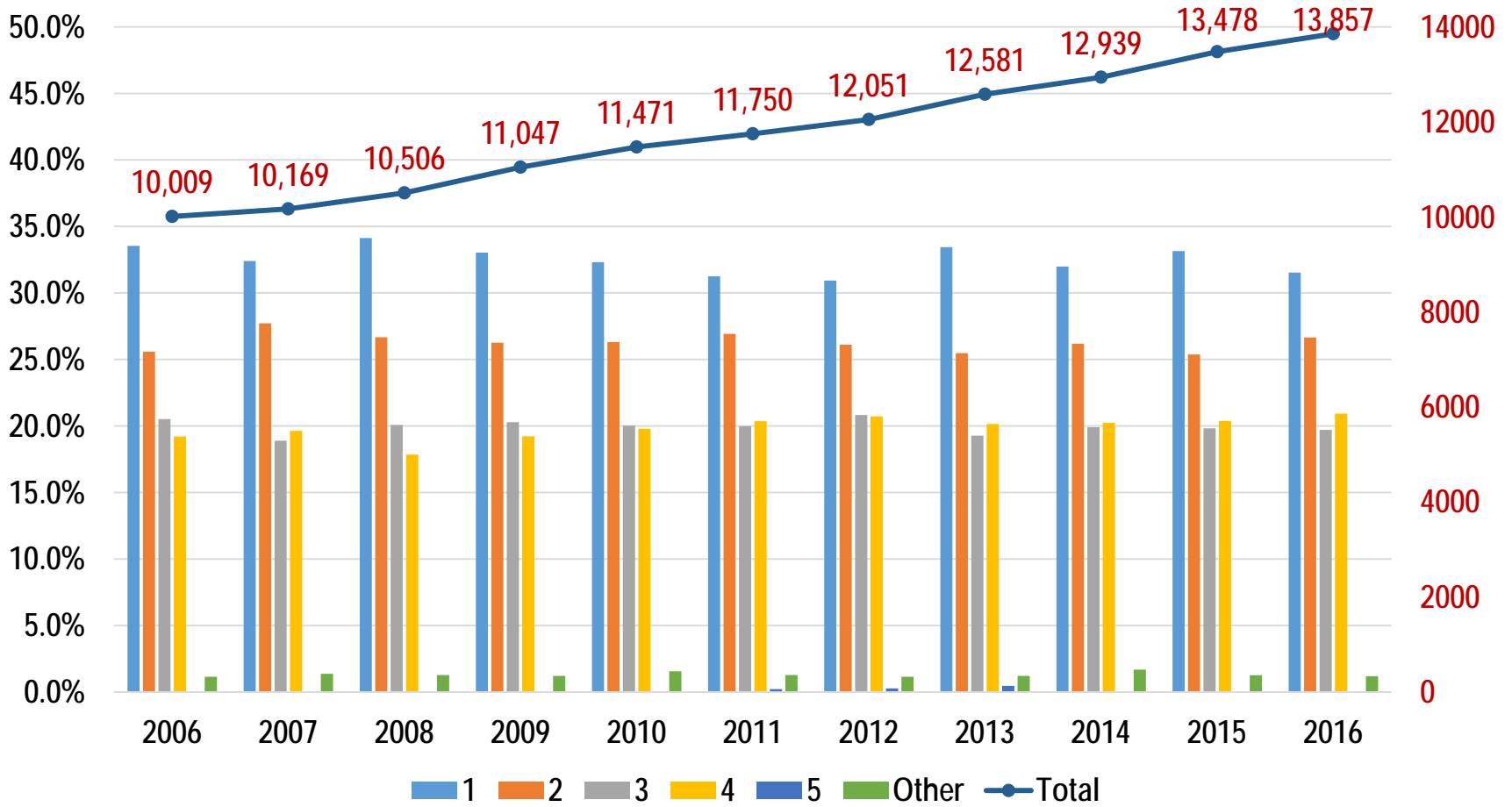
(note logarithmic scale)



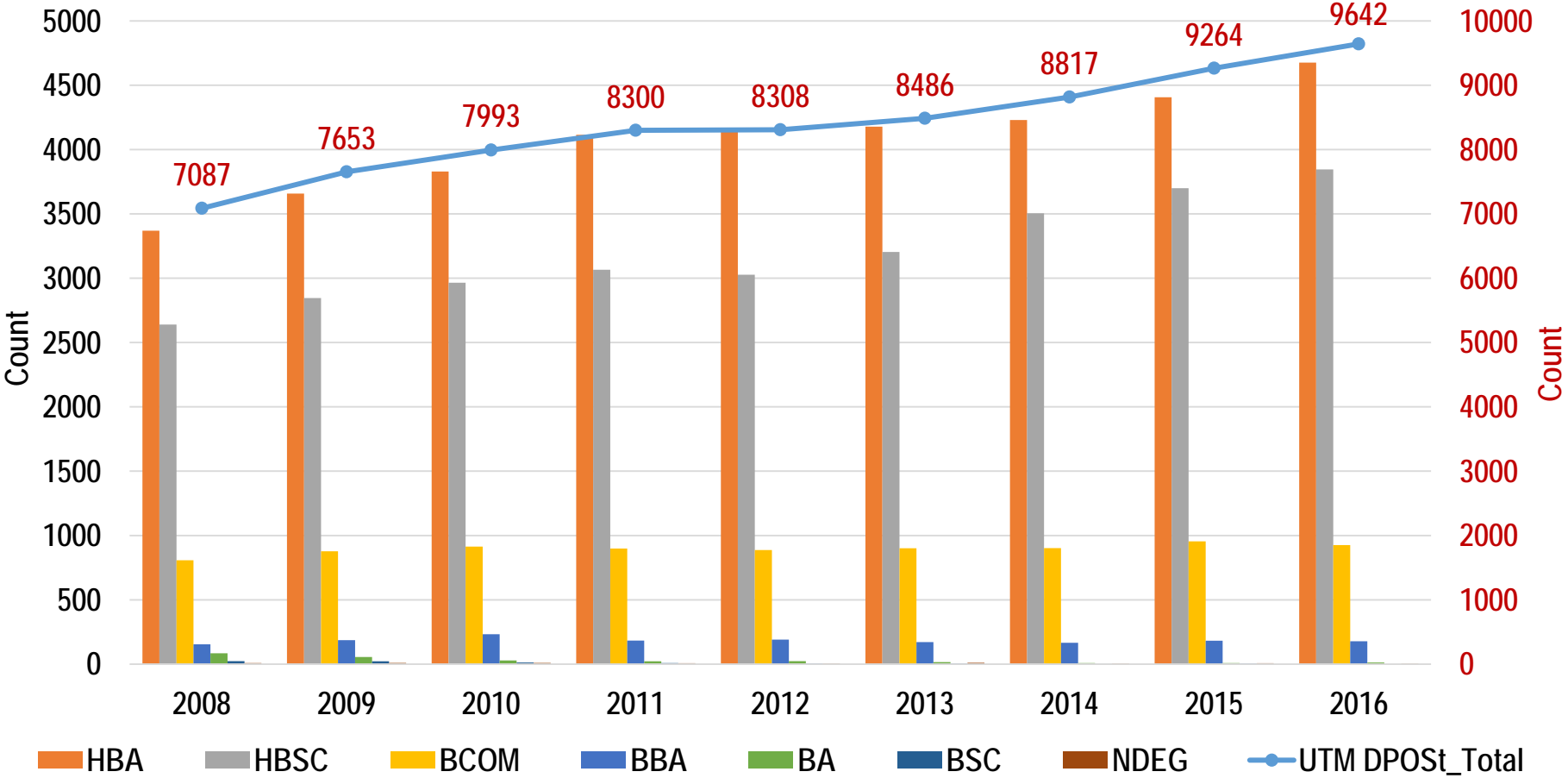
Domestic International 2016 Total



Year of Study Fall 2006-2016



Degree Type Distinct Count Fall 2008-2016*

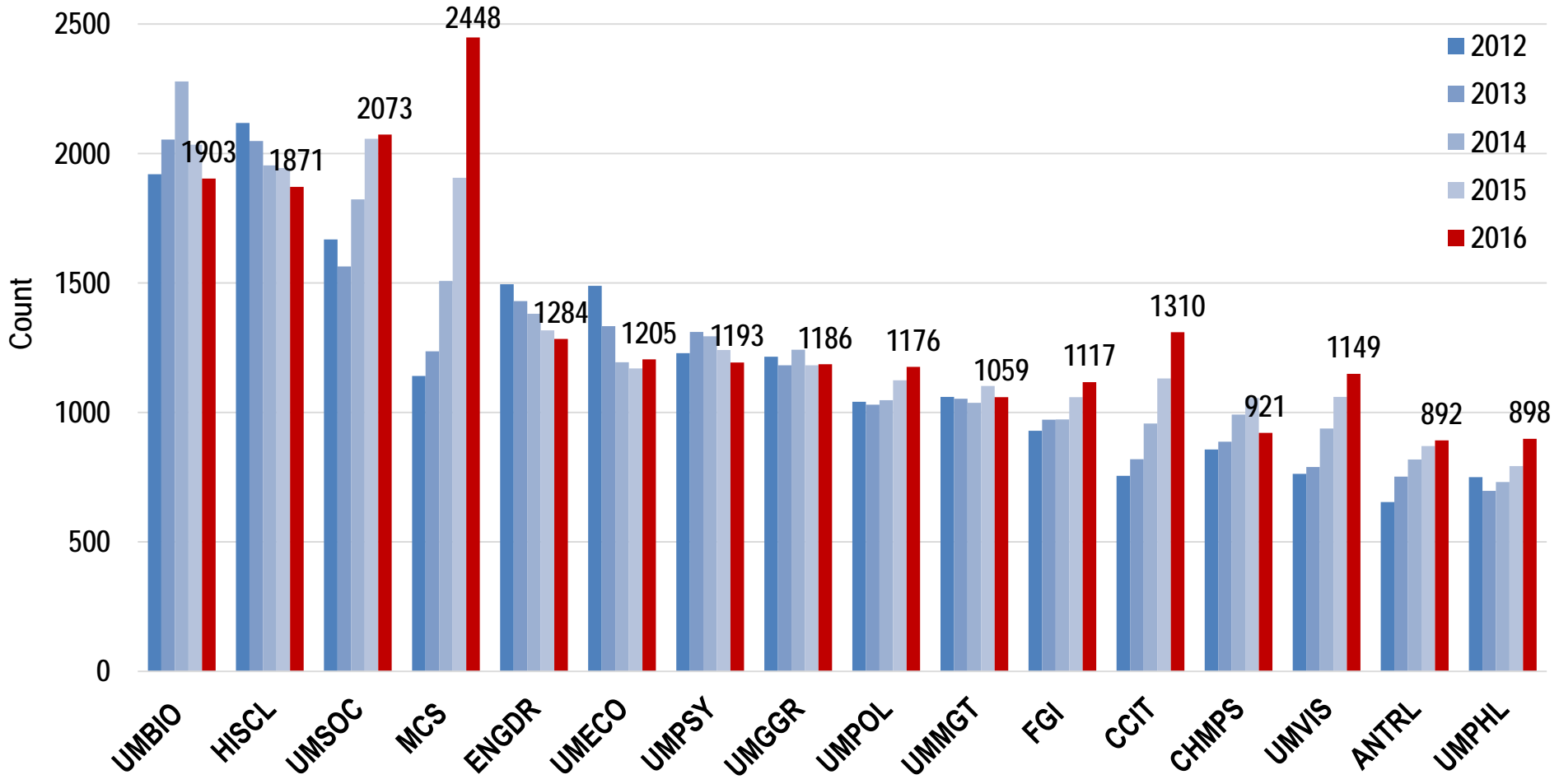


* Degree-post is required after 4.0 credits completed

Source: UTBI at Count Date



Program of Study by Department





UTM 2004-2014 Cumulative Graduation Rate (U of T Degree)

Session	Total	3 yrs	4 yrs	5 yrs	6 yrs	7 yrs	8 yrs	9 yrs	10 yrs	11 yrs	12 yrs	No
20049	1954	0.9%	33.0%	57.1%	64.3%	67.5%	69.5%	70.6%	71.2%	71.4%	71.6%	28.4%
20059	2246	0.5%	28.1%	54.7%	61.8%	65.2%	67.2%	68.2%	68.7%	69.0%		31.0%
20069	2481	0.7%	32.4%	57.2%	64.8%	68.1%	69.3%	70.0%	70.3%			29.7%
20079	2361	0.8%	34.3%	60.0%	66.4%	68.8%	70.2%	70.7%				29.3%
20089	2563	1.4%	36.6%	59.3%	64.6%	67.5%	69.0%					31.0%
20099	2540	1.2%	38.5%	61.4%	68.4%	70.9%						29.1%
20109	2624	1.8%	38.8%	61.2%	66.2%							33.8%
20119	2621	1.4%	38.6%	60.1%								39.9%
20129	2896	0.9%	40.3%									59.7%
20139	3178	0.7%										99.3%
20149	3101											



UTM 2004-2014 ER COM Cumulative Graduation Rate (U of T Degree)

Session	Total	3 yrs	4 yrs	5 yrs	6 yrs	7 yrs	8 yrs	9 yrs	10 yrs	11 yrs	No
20049	209	2.4%	56.9%	73.7%	77.0%	78.9%	81.3%	81.8%	82.3%	82.8%	17.2%
20059	247	0.8%	54.3%	72.5%	76.5%	78.9%	79.8%	79.8%	79.8%	80.2%	19.8%
20069	354	1.7%	56.2%	72.9%	80.2%	82.8%	84.5%	85.0%	85.0%		15.0%
20079	317	1.9%	53.6%	77.3%	81.1%	83.9%	84.5%	84.5%			15.5%
20089	394	5.8%	59.1%	75.6%	77.7%	78.4%	79.4%				20.6%
20099	400	4.0%	58.3%	74.0%	79.8%	82.0%					18.0%
20109	446	6.1%	61.0%	76.2%	78.3%						21.7%
20119	434	3.9%	50.5%	69.4%							30.6%
20129	480	2.3%	53.8%								46.3%
20139	519	1.2%									98.8%
20149	443										

UTM 2004-2014 ER LFE Cumulative Graduation Rate (U of T Degree)

Session	Total	3 yrs	4 yrs	5 yrs	6 yrs	7 yrs	8 yrs	9 yrs	10 yrs	11 yrs	12 yrs	No
20049	253	0.4%	37.5%	62.8%	72.3%	73.9%	75.9%	75.9%	76.7%	76.7%	76.7%	23.3%
20059	270	0.4%	37.0%	64.4%	70.0%	72.6%	73.7%	74.4%	75.6%	75.9%		24.4%
20069	391	0.3%	35.0%	63.2%	71.1%	74.9%	74.9%	75.7%	75.7%			24.3%
20079	333	0.6%	38.4%	66.7%	72.7%	75.7%	77.8%	78.7%				22.2%
20089	307	1.3%	45.3%	71.3%	75.2%	78.2%	79.5%					21.8%
20099	297	0.3%	46.5%	72.7%	77.8%	78.8%						22.2%
20109	305	0.3%	43.0%	70.2%	73.4%							29.8%
20119	284	0.7%	51.1%	74.3%								48.9%
20129	411	1.2%	47.7%									98.8%
20139	456	0.2%										
20149	339											



UTM 2004-2014 ER SSC Cumulative Graduation Rate (U of T Degree)

Session	Total	3 yrs	4 yrs	5 yrs	6 yrs	7 yrs	8 yrs	9 yrs	10 yrs	No
20049	419	0.4%	27.2%	54.7%	62.5%	66.1%	67.8%	69.0%	69.2%	30.8%
20059	388	0.4%	25.0%	50.5%	55.9%	59.0%	61.3%	63.1%	63.9%	36.1%
20069	378	0.3%	25.1%	51.9%	61.9%	65.6%	66.1%	66.9%		33.1%
20079	381	0.6%	28.9%	52.8%	59.3%	61.2%	62.5%	62.7%		37.3%
20089	518	1.3%	28.0%	48.5%	54.8%	59.1%	61.0%			39.0%
20099	507	0.3%	28.6%	50.9%	58.4%	61.7%				38.3%
20109	546	0.3%	30.2%	54.6%	61.5%					38.5%
20119	564	0.6%	31.2%	52.5%						47.5%
20129	690	0.8%	33.6%							66.4%
20139	713	0.2%								99.8%
20149	725									