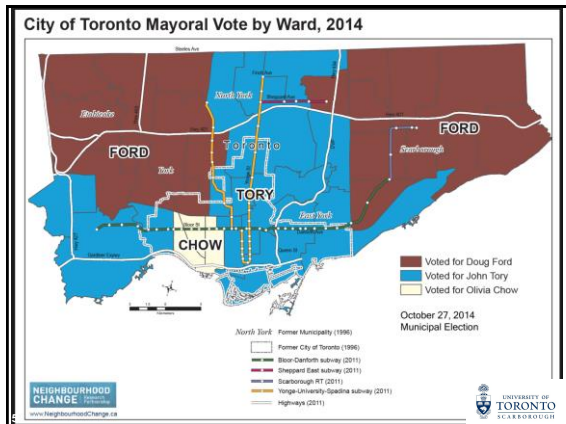
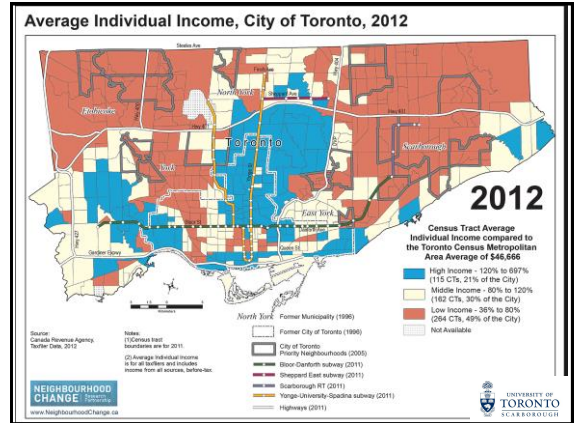
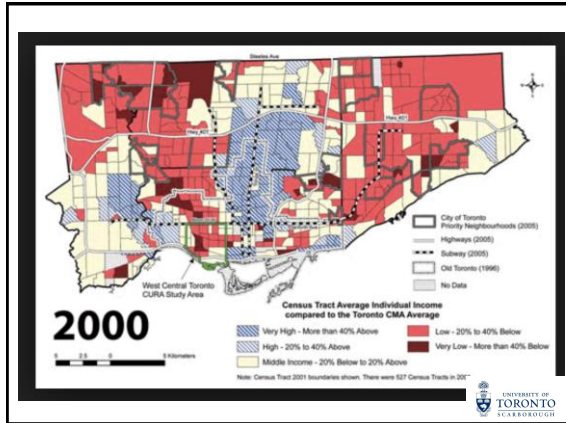
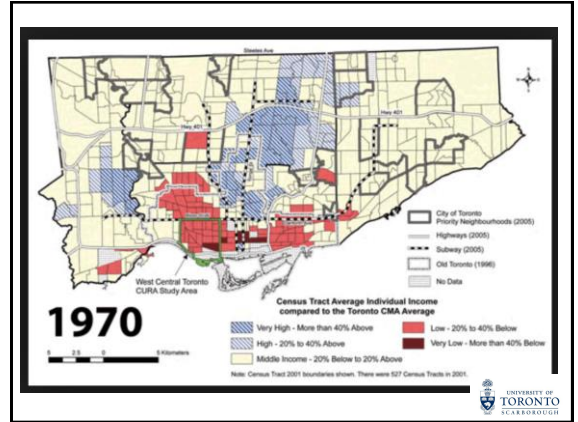


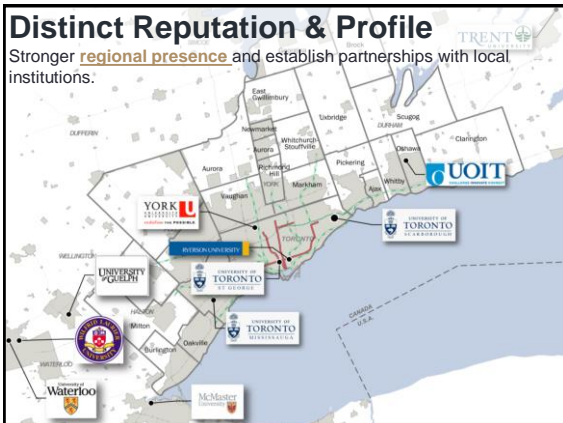
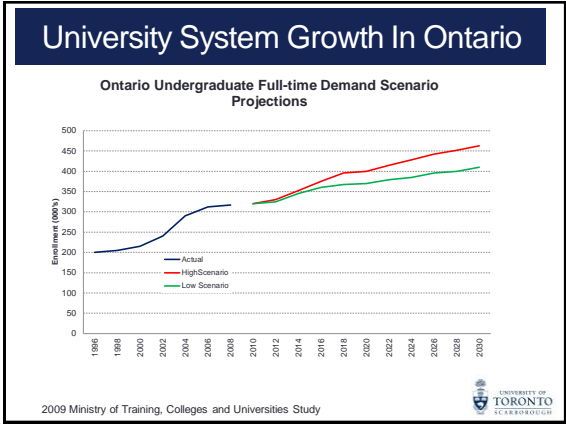


UNIVERSITY OF
TORONTO
SCARBOROUGH

AN ANCHOR FOR CHANGE: UTSC MASTER PLAN AND SECONDARY PLAN

Andrew Arifuzzaman
Chief Administrative Officer





Our Opportunities

- > Teaching and Research
- > Student Housing
- > Athletics Centre
- > Public Transit
- > Retail, Industry & Partnerships
- > Hotel/Conference Centre
- > Places to hang out
- > Image



Members of the university and surrounding community had opportunities for input through stakeholder interviews, workshops and focus group meetings.

- Grow on our own terms
- Be LOUD!
- People and ideas drive regeneration
- Bring in a big program and bring it in strong
- Scarborough embraces this campus... and it's time that the University embraces Scarborough
- No one knows we are here
- It is now important to set the stage for the next 100 years

The Opportunity:

St. George Campus



UTSC Master Plan

- Academic Draw
- Academic/Industry Partnerships
- Residential Development
- Pan Am and Legacy
- New Intellectual, Cultural and Sporting Hub of the Eastern GTA



Why Scarborough and Why Now:

- Historic under investment
- Conversion from basic manufacturing
- Potential Anchor Institutions (Universities, Colleges Hospitals) and interest from Private sector
- National and International attention coming
 - Toronto Pan Am Sports Centre
 - Rouge National Park
- Momentum is growing from grass the roots
 - Community partners
 - Institutional led Infrastructure Investments
 - Scarborough Business Association
 - Rotary Clubs of Scarborough: Revitalization report



What we are asking of the City

1. An opportunity for the City and University to work together in creating a platform for City Building in the east
2. A recognition of UTSC's influential role in economic development and Scarborough revitalization through the Secondary Plan and other planning tools
3. Unlocking the potential for the north City and Provincial lands
4. Continued support of the vision of the Master Plan and implementation of the Secondary Plan



What will the Secondary Plan address?

• A traditional Secondary Plan structure with dynamic built form to respond to unique institutional needs:

Table of Contents:

1. Introduction
2. Vision
3. Movement and Circulation
4. Open Space
5. Environmental Stewardship and Sustainable Design
6. Land Use and Built Form
7. Cultural Heritage
8. Servicing and Stormwater
9. Implementation



General Policies and Vision

Key Policies and Content

- Support the growth of UTSC as a mixed-use, transit supportive, and connected centre of education, research, and employment
- To permit a wide range of uses, including ancillary uses, that support the university's dynamic institutional role, and provide flexibility for growth and adaptation.
- To establish a university mixed use centre at the intersection of Military Trail and Ellesmere, and support integration with the surrounding community
- Protect and enhance the public realm and natural features on campus
- To realign Military Trail to create a cohesive academic district and support transit implementation.

20

Movement and Circulation

Structure

1. Street Network
2. Transit
3. Pedestrian and Bicycle Network
4. Travel Demand Management
5. Parking, Servicing and Loading

Schedules and Supporting Illustrations

- Street Network
- Pedestrian and Bicycle Network



21

Movement and Circulation

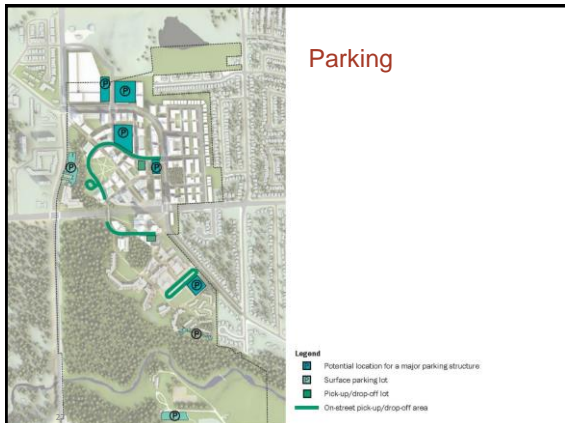
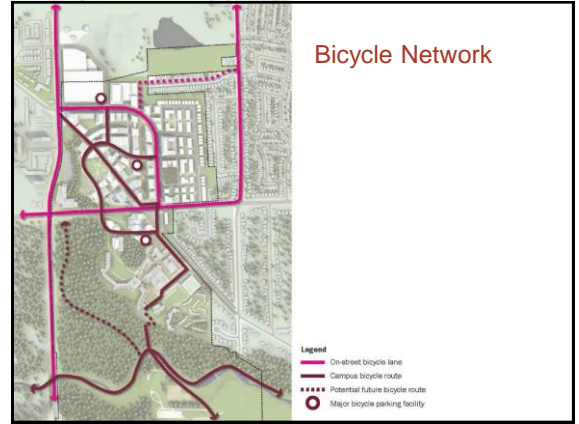
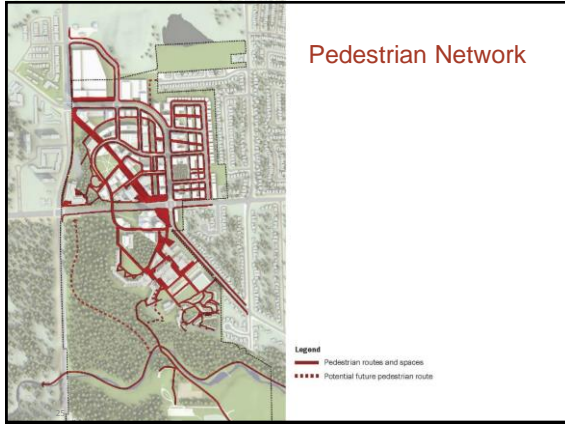


Street Network



Transit Network





Open Space

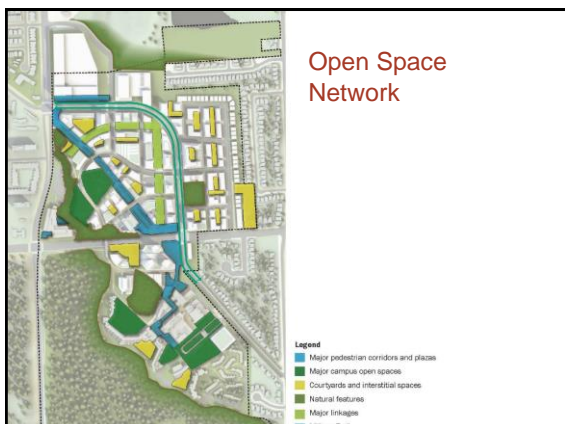
Structure

1. Morningside Ravine
2. Significant Open Spaces
3. Gateways and Views
4. Other Open Spaces

Schedules and Supporting Illustrations

- Open Space Network
- Natural Heritage System

28



Environmental Stewardship and Sustainable Design

Structure

1. Ravine Stewardship
2. Sustainable Design
3. Environment

Schedules and Supporting Illustrations

- Natural Heritage System (also in Chapter 4)

31



Land Use and Built Form

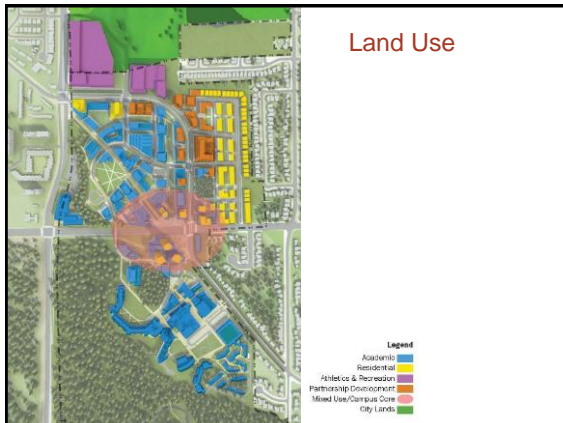
Structure

1. Institutional Use Designation
2. Open Space Areas
3. Built Form

Schedules and Supporting Illustrations

- Land Use

32



Cultural Heritage

Structure

1. Built Heritage Resources
2. Archaeological Resources

Schedules and Supporting Illustrations

- Cultural Heritage Resources
- Areas of Archaeological Potential

34

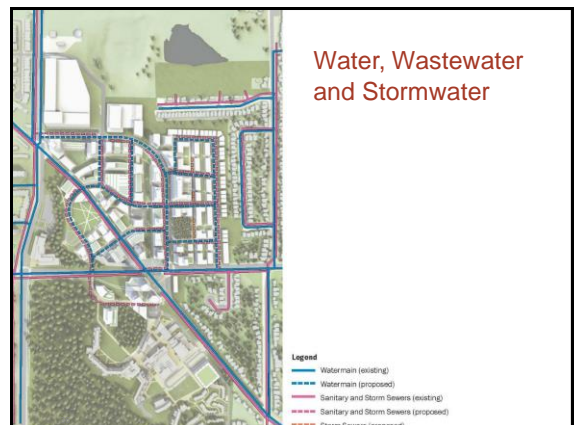


Cultural Heritage

Key Policies and Content

- Cultural heritage resources, including the Miller Lash House and the Science and Humanities Wings, will be conserved as an important part of UTSC heritage.
- Archeological assessment will be conducted where necessary and all archeological resources will be appropriately conserved.

35



Implementation

Structure

1. Zoning By-law
2. Building Design Guidelines
3. Site Plan Approval
4. Plan Review and Monitoring

37



Community Advisory Group

- CAG Orientation meeting was held on December 10th at UTSC
- List of invitees included representatives from local Business Associations, Residents Associations, Councillor's offices, non-profits, and residents
- Overall feedback was positive and participants expressed a strong desire to prioritize student housing to address growing rooming house issue
- Concerns over community accessibility of programs and facilities were also expressed
- Next meeting will likely be in February of 2016



Preliminary Timeline



QUESTIONS

40