

# REPORT OF THE VICE-PROVOST, STUDENTS

## STUDENT FINANCIAL SUPPORT

January, 2010

### I EXECUTIVE SUMMARY

The Policy on Student Financial Support, approved by the Governing Council in April, 1998, calls for an annual report to include need-based aid by academic division, OSAP debtload for students graduating from undergraduate first-entry programs, and funding for graduate students in doctoral-stream programs.

The data on the student aid awarded by the University provide reassurance that the University continues to meet its commitment under the Policy<sup>1</sup>, and to be accessible. The results demonstrate that we are in full compliance with the requirements of the *Student Access Guarantee for Working Families (SAG)*, implemented by the Ontario Ministry of Training, Colleges and Universities effective 2006-07. University expenditures under the SAG guidelines are included in each Ontario university's annual Multi-Year Accountability Agreement report to the government. Historically, the amount per student reported by U of T has exceeded the average amount reported publicly by other universities by 100 per cent. Although all Ontario universities are required by the SAG to cover the gap between OSAP-assessed need and OSAP funding, many universities require students to come forward and apply for the additional aid. We do not, but rather deliver it automatically to all eligible students. We also extend this aid to students from other Canadian provinces and to aboriginal students receiving band funding.

### II NEED-BASED STUDENT AID (Appendix 1, Tables 1 and 2)

The University provides need-based aid in two forms. UTAPS (University of Toronto Advance Planning for Students) grants are awarded by Admissions and Awards to students who have reached the maximum for government aid from Ontario (OSAP) or other Canadian provinces, or aboriginal band funding, who have assessed need beyond that maximum. In addition, many students who may or may not have qualified for government aid and UTAPS qualify for grants awarded through the academic divisions on the basis of assessments of their individual circumstances. Divisions that lack sufficient resources of their own draw on central student aid resources managed by Admissions and Awards.

---

<sup>1</sup> No student offered admission to a program at the University of Toronto should be unable to enter or complete the program due to lack of financial means.

For 2008-09:

UTAPS grants	\$22,287,132	(2007-08: \$19,640,092)
Individual grants	\$31,064,442	(2007-08: \$28,481,961)
Total	\$53,351,575	(2007-08: \$48,122,053)

The increase in expenditure in 2008-09 compared with the previous year can be attributed to increases in the amounts awarded, as well as to an increase in the number of eligible students. The total awarded increased by almost 11 per cent, reflecting the growing gap between the amount government aid covers, and the assessed need of students. This Report covers the 2008-09 academic year, and thus reflects the impact of the early months of the economic crisis on student need. The increase in the average UTAPS grant from 2007-08 to 2008-09 was 7.9 per cent. The number of students receiving grants, both UTAPS and individually-determined, also increased by 4.2 per cent.

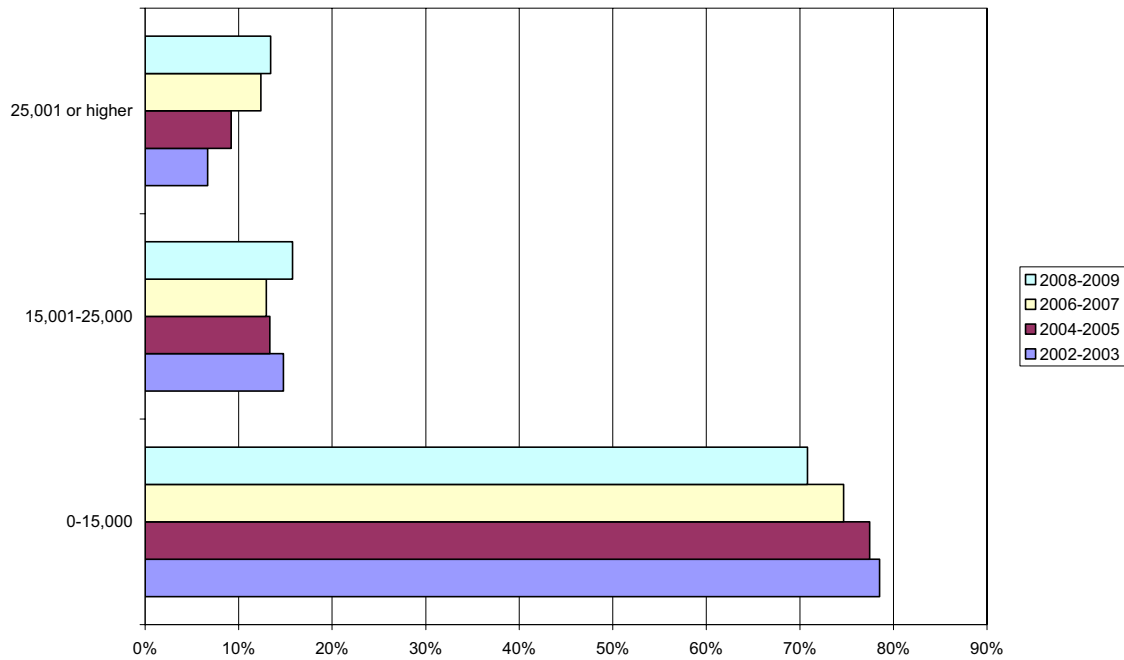
Appendix 1, Table 1, demonstrates that need-based student aid from the University increased from about \$1.5 million in 1992-93 to about \$53.4 million in 2008-09. This is a direct outcome of the implementation of the Policy on Student Financial Support in 1998, and of the increased resources made available from the OSOTF program and tuition reinvestment.

### **III DEBTLOAD (Appendix 1, Figure 1)**

The Policy specifies that the annual report should include information about the debt levels carried by students upon graduation from first-entry undergraduate programs. Monitoring the total debt and repayment patterns of graduating students is an essential element in assessing the ongoing efficacy of the University's Student Financial Support Policy.

The average debt of students graduating from first-entry programs in 2009 who had borrowed from OSAP (46 per cent of all graduates) was about \$19,400. This compares favourably with the average in 1999, the first year in which debt was tracked, when the average was about \$16,000. Over the ten year interval, we have seen a small shift toward higher levels of debt, but the great majority of undergraduates continue to graduate with debts of \$15,000 or less (including zero.) The Ontario government provides loan forgiveness to reduce loans to a maximum of \$7,000 per year of study. The increased average debt reflects the fact that the majority of Arts & Science students on all three campuses are now completing 20-credit degrees, and that greater numbers of those students take more than 4 years, and add additional terms or years of borrowing, to do so.

**Total OSAP Repayable  
Convocating First Entry Programs**



#### **IV PART-TIME STUDENTS**

Students enrolled in a courseload of 60 per cent or more (40 per cent for students with a permanent disability) are defined as fulltime by both the University and the federal and provincial governments, and hence are eligible for to be considered for OSAP and UTAPS. Consistent with the Policy on Student Financial Support and in consultation with the Association of Part-time Undergraduate Students and Woodsworth College, the University developed a unique assessment methodology to provide need-based aid to part-time students under the Noah Meltz Program. The program covers tuition, books, transportation and childcare for one course per session. In 2008-09, approximately \$400,000 was awarded to 240 part-time students.

#### **V INTERNATIONAL STUDENTS (Appendix 1, Table 5)**

In 2005, the Governing Council approved a Statement of Commitment Regarding International Students. With respect to financial support, the Statement said:

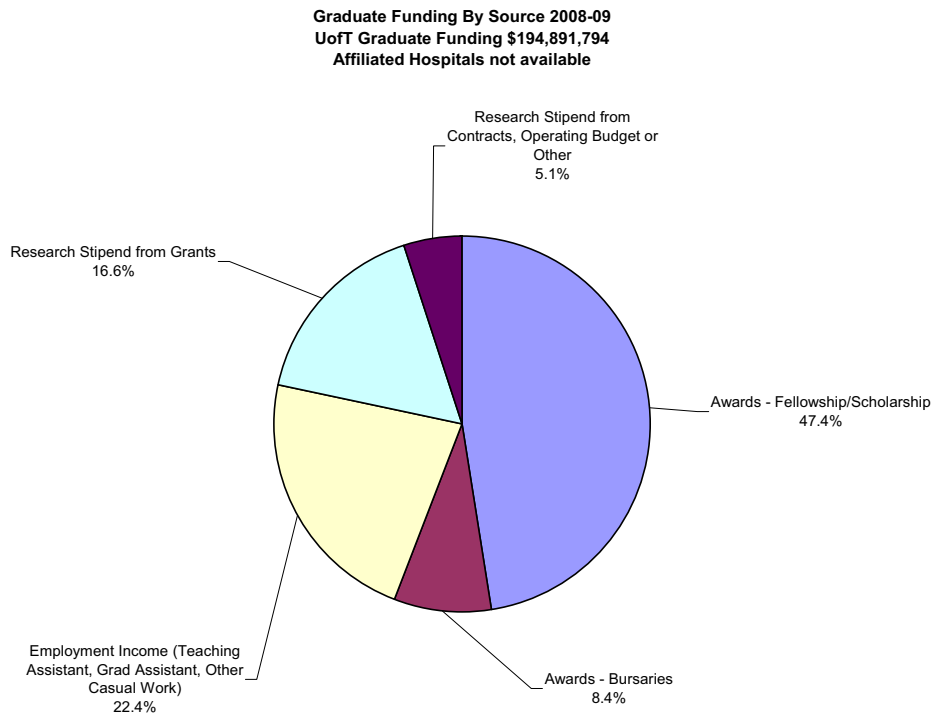
- (a) International students who are admitted and enrolled may encounter financial emergencies and the University will provide financial assistance as needed and where possible.
- (b) The University will develop a program of international admission

scholarships using its own resources and support from external sources; these scholarships will be awarded on the basis of both exceptional academic merit and financial need.

In 2008-2009, exclusive of graduate fellowships, the University provided approximately \$4.1 million to international students in the form of grants (both merit- and need-based.) This means that approximately 15 per cent of international students were assisted. A new scholarship program, based on both need and merit, has been created to recognize a small number of exceptional international first-entry applicants. The program, which provides full financial support to the scholarship recipients throughout their undergraduate studies, is highly selective and based on nomination from the top schools around the world with which we have ongoing contact. There are currently six such international scholars enrolled. All are exemplary students.

## VI GRADUATE STUDENT SUPPORT (Appendix 1, Table 6)

In 2000, the Task Force on Graduate Student Financial Support, set a goal of establishing guaranteed minimum packages of funding for the first 5 years of doctoral-stream graduate studies. Significant progress has been made; the data for 2008-09 show that a total of \$195 million was awarded to students (exclusive of funding from affiliated teaching hospitals.) It should be noted that these data refer to all graduate students, including international students, and not only those in the funded cohort.<sup>2</sup>



<sup>2</sup> It should be noted that the data for graduate students who qualified for purely need-based aid on the basis of the terms specified in the Policy on Student Financial Support are included in Section I and in Appendix 1, Tables 1 and 2. That funding is distinct from the figures shown above.

## VII STUDENT ACCESS

The University's commitment to student financial support carries with it the need to ensure that access to our programs remains equitable for all students regardless of their income or cultural background. Historically, we have monitored student characteristics such as parents' level of education, visible minority status, and family income background and the available evidence is reassuring that the University continues to be accessible.

We participate in two major surveys shared by consortia of universities (the National Survey of Student Engagement, or NSSE; the Graduate and Professional Student Survey, or GPSS.) The U of T results compare very favourably with those of other universities. Notably, the proportions of U of T respondents who identified themselves as belonging to a visible minority<sup>3</sup> in the 2008 NSSE survey were 71 per cent of first year undergraduates, and 65 per cent of senior year. The comparable benchmark figures for Ontario universities were 43 per cent and 37 per cent respectively.

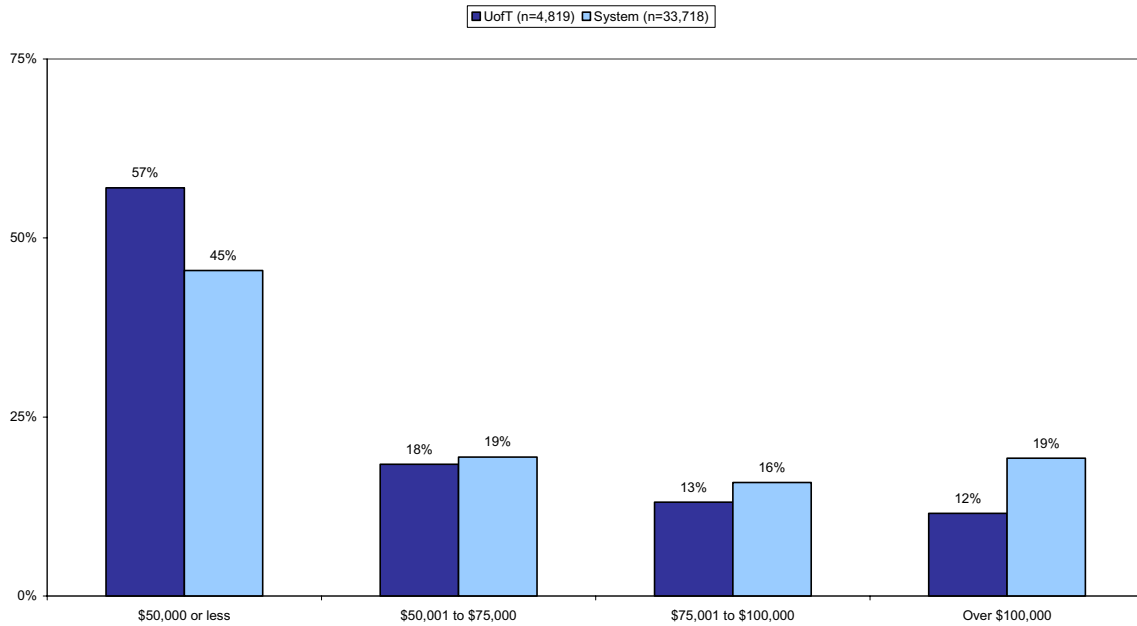
With respect to parents' educational attainment, the 2008 NSSE results show that about 27 % of respondents (first year and senior year) reported that their parents had no post – secondary education, either at college or university.

This year, we have been successful in acquiring data from the Ministry of Training, Colleges and Universities on the average parental income of students receiving OSAP compared with the Ontario university system. The following chart shows the distribution of parental income of first-year U of T students in direct-entry undergraduate programs and the comparable distribution for the system as a whole. The greater proportion of our students from lower-income backgrounds, 57 per cent compared with a system figure of 45 per cent, is noteworthy and illustrates the positive impact of our student aid program.

---

<sup>3</sup> Students were asked to assign themselves to one of 15 ethno-cultural categories. We have chosen the phrase "visible minority" for all respondents who selected a category other than "White."

**Parental Income of 2008/09 Year 1 Students Receiving OSAP in Direct Entry Programs: U of T compared to All Ontario Universities**



**Need based awards by year  
undergraduate and graduate divisions  
(including OSOTF)**

APPENDIX 1  
Table 1

award year	Grants awarded under UTAPS		Other grants from General University funds		Other grants from faculty/college funds		Total grants	
	Number	Amount	Number	Amount	Number	Amount	Number	Amount
1990-1991	0	0	1,456	884,388	781	579,446	2,237	1,463,834
1991-1992	0	0	1,445	843,084	1,036	728,925	2,481	1,572,008
1992-1993	0	0	1,433	824,929	971	709,863	2,404	1,534,793
1993-1994	0	0	1,641	975,608	961	794,692	2,602	1,770,300
1994-1995	0	0	1,805	1,103,230	1,028	906,879	2,833	2,010,109
1995-1996	0	0	1,822	1,177,398	1,044	1,010,008	2,866	2,187,406
1996-1997	1,872	1,758,589	1,605	1,210,681	1,014	1,006,181	4,491	3,975,452
1997-1998	2,441	2,814,424	2,017	1,492,113	925	1,154,565	5,383	5,461,103
1998-1999	3,013	4,929,533	3,071	4,003,958	2,016	3,260,397	8,100	12,193,888
1999-2000	5,497	9,675,426	3,984	6,045,392	3,843	7,138,011	13,324	22,858,828
2000-2001	5,454	10,715,830	3,691	6,891,486	7,085	11,964,604	16,230	29,571,920
2001-2002	4,832	11,375,219	3,875	8,382,608	6,603	14,973,550	15,310	34,731,378
2002-2003	5,689	14,411,167	4,144	9,341,761	7,595	16,607,078	17,428	40,360,006
2003-2004	6,796	19,196,432	4,663	9,617,409	6,222	14,882,609	17,681	43,696,450
2004-2005	6,910	18,535,567	4,256	8,986,405	6,364	18,253,932	17,530	45,775,904
2005-2006	5,582	14,800,199	3,769	7,679,898	6,626	17,774,491	15,977	40,254,588
2006-2007	6,100	17,799,751	3,780	8,534,806	6,876	19,117,528	16,756	45,452,085
2007-2008	6,200	19,640,092	3,244	8,141,237	7,175	20,340,724	16,619	48,122,052
2008-2009	6,523	22,287,132	3,340	8,353,738	7,455	22,710,704	17,318	53,351,575



**Amount of OSAP and UTAPS  
(2007-2008 and 2008-2009)**

APPENDIX 1  
Table 2

Faculty/College/Program	2007-2008		2008-2009	
	Total OSAP loans and grants and Millennium Bursaries	Total grants awarded under UTAPS (Note 1)	Total OSAP loans and grants and Millennium Bursaries	Total grants awarded under UTAPS (Note 1)
A&S St. George	66,128,529	3,388,600	65,462,870	3,723,955
UTM	26,216,726	2,028,256	28,204,267	2,200,050
UTSC	33,897,642	2,674,148	34,852,954	2,990,602
<b>TOTAL A&amp;S</b>	<b>126,242,897</b>	<b>8,091,004</b>	<b>128,520,091</b>	<b>8,914,607</b>
APSC	12,900,034	5,517,405	12,731,730	6,073,732
FPEH	1,459,287	31,700	1,462,109	21,400
MUSIC	995,973	48,300	1,089,253	31,200
NURS	2,073,785	169,600	2,000,271	170,950
OISE BEd	4,476,416	331,800	5,117,680	482,050
RAD	2,850,835	46,000	2,692,491	112,600
<b>TOTAL above prof fac</b>	<b>24,756,330</b>	<b>6,144,805</b>	<b>25,093,534</b>	<b>6,891,932</b>
DENT	2,581,098	972,586	2,631,334	883,446
LAW	2,381,879	See Note 2	2,425,219	See Note 2
MED	6,862,717	See Note 2	7,237,326	See Note 2
PHM	4,481,772	1,262,629	5,099,868	1,356,628
<b>TOTAL Dent, Law, Med, Phm</b>	<b>16,307,466</b>	<b>2,235,215</b>	<b>17,393,747</b>	<b>2,240,074</b>
MGT	870,044	See Note 2	892,346	See Note 2
SGS	10,526,328	2,643,362	12,801,953	3,498,219
<b>TOTAL MGT SGS</b>	<b>11,396,372</b>	<b>2,643,362</b>	<b>13,694,299</b>	<b>3,498,219</b>
OISE grad	2,012,512	525,705	2,625,569	742,300
<b>TOTAL OISE/UT</b>	<b>2,012,512</b>	<b>525,705</b>	<b>2,625,569</b>	<b>742,300</b>
<b>OVERALL TOTAL</b>	<b>180,715,577</b>	<b>19,640,092</b>	<b>187,327,240</b>	<b>22,287,132</b>

Notes:

- Including UTAPS awarded to non-Ontario students and aboriginal students with band funding.
- UTAPS at Law, Medicine and Management is distributed as part of each faculty's bursary allocation.

Notes re abbreviations:

OISE BEd = OISE/UT Initial Teaching Education Programs  
OISE grad = OISE/UT graduate programs  
RAD = Radiation Sciences  
SGS = All graduate programs except Management and OISE/UT

**2008-2009 Non-UTAPS grants  
(including OSOTF)**

APPENDIX 1  
Table 3

Fund Source Faculty/College/Program	General University		Arts and Science		Medicine		Other faculties/colleges		Total	
	Number	Amount	Number	Amount	Number	Amount	Number	Amount	Number	Amount
A&S St. George	1884	4276785	267	358549.1	0	0	1301	1901310.33	3452	6536644.8
UTM	272	496647.1	2	10000	0	0	117	125014.62	391	631661.68
UTSC	390	706766.4	4	8077.66	0	0	135	238866.57	529	953710.64
<b>TOTAL A&amp;S</b>	<b>2,546</b>	<b>5,480,199</b>	<b>273</b>	<b>376,627</b>	<b>0</b>	<b>0</b>	<b>1,553</b>	<b>2,265,192</b>	<b>4,372</b>	<b>8,122,017</b>
APSC	74	202600.5	2	2000	0	0	453	967034.47	529	1171635
FPEH	39	72445.34	0	0	0	0	23	17773.04	62	90218.38
MUSIC	46	98205.22	0	0	0	0	163	294792.1	209	392997.32
NURS	49	98380.38	0	0	0	0	79	250593.7	128	348974.08
OISE BEd	201	557668	0	0	0	0	20	70096.31	221	627764.31
RAD	57	76718	0	0	6	4780	0	0	63	81498
<b>TOTAL above prof fac</b>	<b>466</b>	<b>1,106,017</b>	<b>2</b>	<b>2,000</b>	<b>6</b>	<b>4,780</b>	<b>738</b>	<b>1,600,290</b>	<b>1,212</b>	<b>2,713,087</b>
DENT	1	450	0	0	0	0	44	33143.93	45	33593.93
LAW	13	45450	0	0	0	0	411	2526023.69	424	2571473.7
MED	3	8750	0	0	1107	3956971	0	0	1110	3965720.9
PHM	9	19910.97	0	0	0	0	544	574694.81	553	594605.78
<b>TOTAL Dent, Law, Med, Phm</b>	<b>26</b>	<b>74,561</b>	<b>0</b>	<b>0</b>	<b>1,107</b>	<b>3,956,971</b>	<b>999</b>	<b>3,133,862</b>	<b>2,132</b>	<b>7,165,394</b>
MGT	0	0	0	0	0	0	533	2436405.34	533	2436405.3
SGS	151	1133102	277	820058.5	419	2597151	1380	5082146.51	2227	9632457.6
<b>TOTAL SGS</b>	<b>151</b>	<b>1,133,102</b>	<b>277</b>	<b>820,058</b>	<b>419</b>	<b>2,597,151</b>	<b>1,913</b>	<b>7,518,552</b>	<b>2,760</b>	<b>12,068,863</b>
OISE grad	151	559859.1	1	5000	1	3936	166	426285.93	319	995081.03
<b>TOTAL OISE/UT</b>	<b>151</b>	<b>559,859</b>	<b>1</b>	<b>5,000</b>	<b>1</b>	<b>3,936</b>	<b>166</b>	<b>426,286</b>	<b>319</b>	<b>995,081</b>
<b>OVERALL TOTAL</b>	<b>3,340</b>	<b>8,353,738</b>	<b>553</b>	<b>1,203,685</b>	<b>1,533</b>	<b>6,562,838</b>	<b>5,369</b>	<b>14,944,181</b>	<b>10,795</b>	<b>31,064,442</b>

University of Toronto Work Study Program

APPENDIX 1  
Table 4

Faculty/College/Program	2007-2008		2008-2009	
	Number of students	Total expenses	Number of students	Total expenses
A&S St. George	834	1,365,179	879	1,450,194
UTM	282	458,350	313	488,189
UTSC	335	475,329	415	580,344
<b>TOTAL A&amp;S</b>	<b>1,451</b>	<b>2,298,858</b>	<b>1,607</b>	<b>2,518,727</b>
APSC	50	68,640	43	64,184
FPEH	40	72,227	59	91,591
MUSIC	21	30,818	21	34,484
NURS	3	4,862	11	14,868
OISE BEd	15	21,078	20	30,979
RAD	3	5,930	2	3,536
<b>TOTAL above prof fac</b>	<b>132</b>	<b>203,556</b>	<b>156</b>	<b>239,642</b>
DENT	1	625		
LAW	12	16,645	8	10,408
MED	1	2,041	1	1,913
PHM	16	27,917	15	23,654
<b>TOTAL Dent, Law, Med, Phm</b>	<b>30</b>	<b>47,229</b>	<b>24</b>	<b>35,974</b>
SGS	162	291,961	192	329,232
<b>TOTAL SGS</b>	<b>162</b>	<b>291,961</b>	<b>192</b>	<b>329,232</b>
OISE grad	14	23,529	25	41,574
<b>TOTAL OISE/UT</b>	<b>14</b>	<b>23,529</b>	<b>25</b>	<b>41,574</b>
<b>OVERALL TOTAL</b>	<b>1,775</b>	<b>2,845,821</b>	<b>1,995</b>	<b>3,152,828</b>

Note:

This program is funded jointly by the University and the Ministry of Training, Colleges and Universities.

**Awards to international students  
(exclusive of graduate fellowships)**

APPENDIX 1  
Table 5

Faculty/College/Program	2007-2008		2008-2009	
	number	amount	number	amount
A&S St. George	495	1,429,168	432	1,416,365
UTM	44	106,147	18	69,317
UTSC	130	227,073	183	275,213
<b>TOTAL A&amp;S</b>	<b>668</b>	<b>1,730,475</b>	<b>633</b>	<b>1,760,895</b>
APSC	94	248,093	169	449,337
FPEH	4	13,976	4	13,560
MUSIC	16	27,436	8	13,081
NURS	1	1,400	0	0
OISE BEd	0	0	1	3,575
RAD	0	0	0	0
<b>TOTAL above prof fac</b>	<b>115</b>	<b>290,905</b>	<b>182</b>	<b>479,553</b>
DENT	1	340	1	1,500
LAW	5	28,046	10	80,693
MED	3	2,070	5	16,641
PHM	2	2,500	0	0
<b>TOTAL Dent, Law, Med, Phm</b>	<b>11</b>	<b>32,956</b>	<b>16</b>	<b>98,834</b>
MGT	59	130,618	105	295,606
SGS	242	1,053,342	225	1,333,673
<b>TOTAL MGT SGS</b>	<b>301</b>	<b>1,183,960</b>	<b>330</b>	<b>1,629,279</b>
OISE grad	17	95,243	16	88,096
<b>TOTAL OISE/UT</b>	<b>17</b>	<b>95,243</b>	<b>16</b>	<b>88,096</b>
<b>OVERALL TOTAL</b>	<b>1,113</b>	<b>3,365,452</b>	<b>1,177</b>	<b>4,056,657</b>

**TOTAL GRAD FUNDING BY SOURCE BY FACULTY 2007/2008 and 2008/2009**

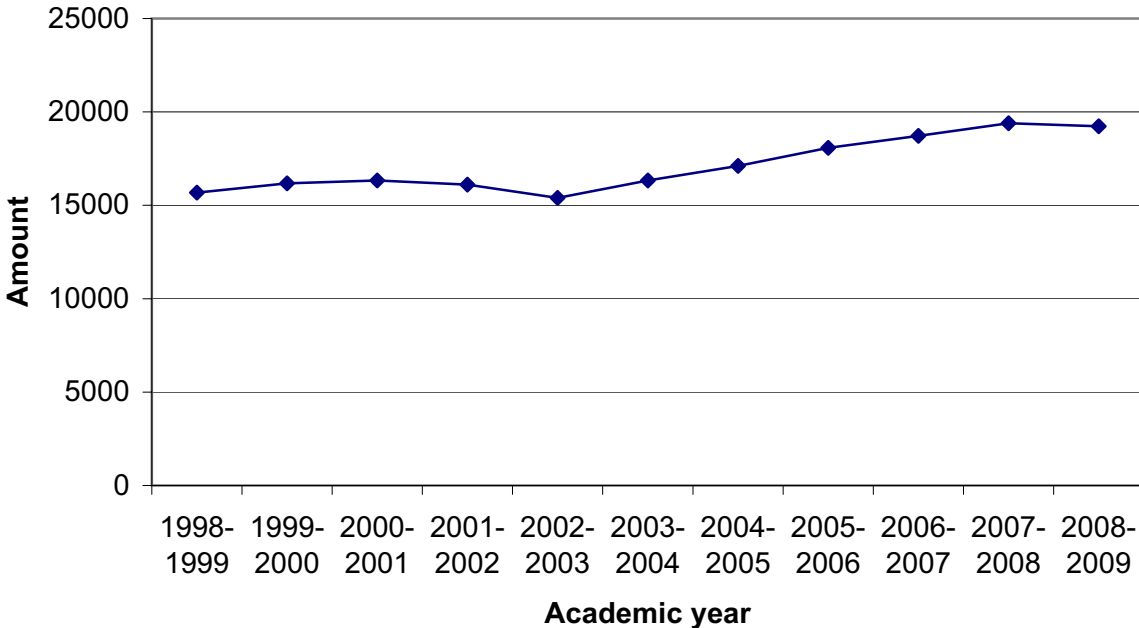
APPENDIX 1  
Table 6

All Programs by Faculty	2007/2008				2008/2009			
	Award Income	Employment Income	Research Stipend	All Income	Award Income	Employment Income	Research Stipend	All Income
Applied Science & Engineering	13,451,838	3,598,439	11,532,207	28,582,484	13,629,530	3,908,147	12,799,285	30,336,962
Architecture, Landscape, and Design	767,242	368,897	9,237	1,145,376	1,071,377	441,010	3,407	1,515,795
Arts & Science (includes UTM)	46,385,118	22,981,557	12,271,202	81,637,877	48,581,124	24,496,072	13,400,900	86,478,096
Dentistry	640,848	198,262	556,757	1,395,866	731,919	206,783	515,446	1,454,148
Forestry	916,267	177,373	382,168	1,475,808	836,519	196,112	411,627	1,444,259
Information Studies	1,342,390	1,285,897	83,458	2,711,744	1,695,743	1,262,658	79,184	3,037,584
Law	1,289,477	121,226	1,002	1,411,705	1,096,806	144,781	8,003	1,249,590
Management	5,122,172	812,147	326,726	6,261,045	4,564,898	764,805	262,641	5,592,344
Medicine *	17,920,494	2,206,203	10,623,043	30,749,740	18,999,534	2,432,384	11,068,841	32,500,759
Music	1,918,647	556,638	4,060	2,479,345	2,090,969	644,995	11,906	2,747,870
Nursing	736,629	479,324	544,460	1,760,413	888,067	481,166	482,225	1,851,457
OISE/UT	8,620,743	6,770,480	971,040	16,362,263	9,516,294	6,874,680	1,223,737	17,614,711
Pharmacy	1,060,848	382,850	1,082,108	2,525,805	884,273	384,111	1,425,369	2,693,752
Physical Education and Health	681,303	360,364	37,743	1,079,410	538,103	238,693	89,249	866,046
Social Work	1,939,139	309,321	240,327	2,488,787	2,214,795	350,538	279,646	2,844,978
SGS Centres & Institutes **	1,509,024	972,393	127,865	2,609,283	1,569,051	910,875	183,517	2,663,443
<b>Total</b>	<b>104,302,179</b>	<b>41,581,370</b>	<b>38,793,401</b>	<b>184,676,950</b>	<b>108,909,001</b>	<b>43,737,809</b>	<b>42,244,983</b>	<b>194,891,794</b>

\* does not include graduate student funding data from affiliated teaching hospitals

\*\* SGS Centres & Institutes includes Criminology, Drama and Industrial Relations only.

**Average OSAP debt (for students with debts)  
Convocating First Entry Programs**



**Proportion of students with zero debt  
Convocating First Entry Programs**

