



UNIVERSITY OF  
TORONTO

UNIVERSITY PLANNING, DESIGN & CONSTRUCTION

# CAPITAL PROJECTS

2014 Annual Report to Planning & Budget  
Executive Committee of the Capital Project  
& Space Allocation Committee (CaPS)

March 4, 2015





# AGENDA

1. Key Metrics
2. Highlighted Projects – CaPS Exec. Recommended
3. Highlighted Projects – CaPS Exec. Terms of Reference Approved
4. Highlighted Projects – Additional
5. Summary

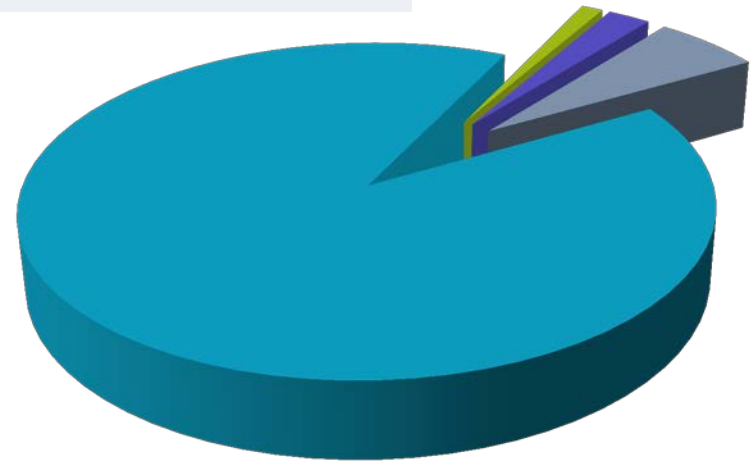


# UNIVERSITY PLANNING, DESIGN & CONSTRUCTION KEY METRICS

## KEY METRICS

# TOTAL NUMBER OF PROJECTS: 83

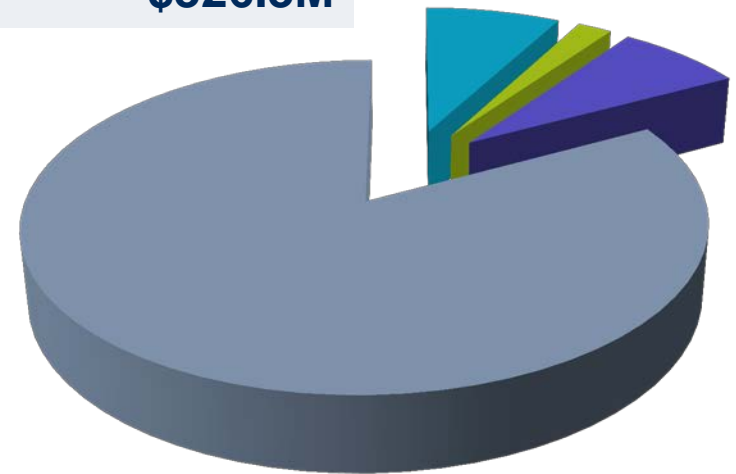
TPC Value of Project	No. of Projects
< \$3,000,000 (CaPS Approved)	75
\$3M to \$10M (CaPS Ex. Recommended)	1
\$10M to \$30M (CaPS Ex. Recommended)	2
> \$30M (CaPS Ex. Recommended)	5
Total Number of Projects	<b>83</b>



## KEY METRICS

# TOTAL DOLLAR VALUE OF PROJECTS: \$326.3M

Project Range / # of Projects	Total TPC Value
< \$3M (75 projects)	\$25.4M
\$3M to \$10M (1 projects)	\$6.5M
\$10M to \$30M (2 projects)	\$24.0M
> \$30M (5 projects)	\$270.4M
<b>Total TPC Value</b>	<b>\$326.3M</b>





## HIGHLIGHTED CAPITAL PROJECTS

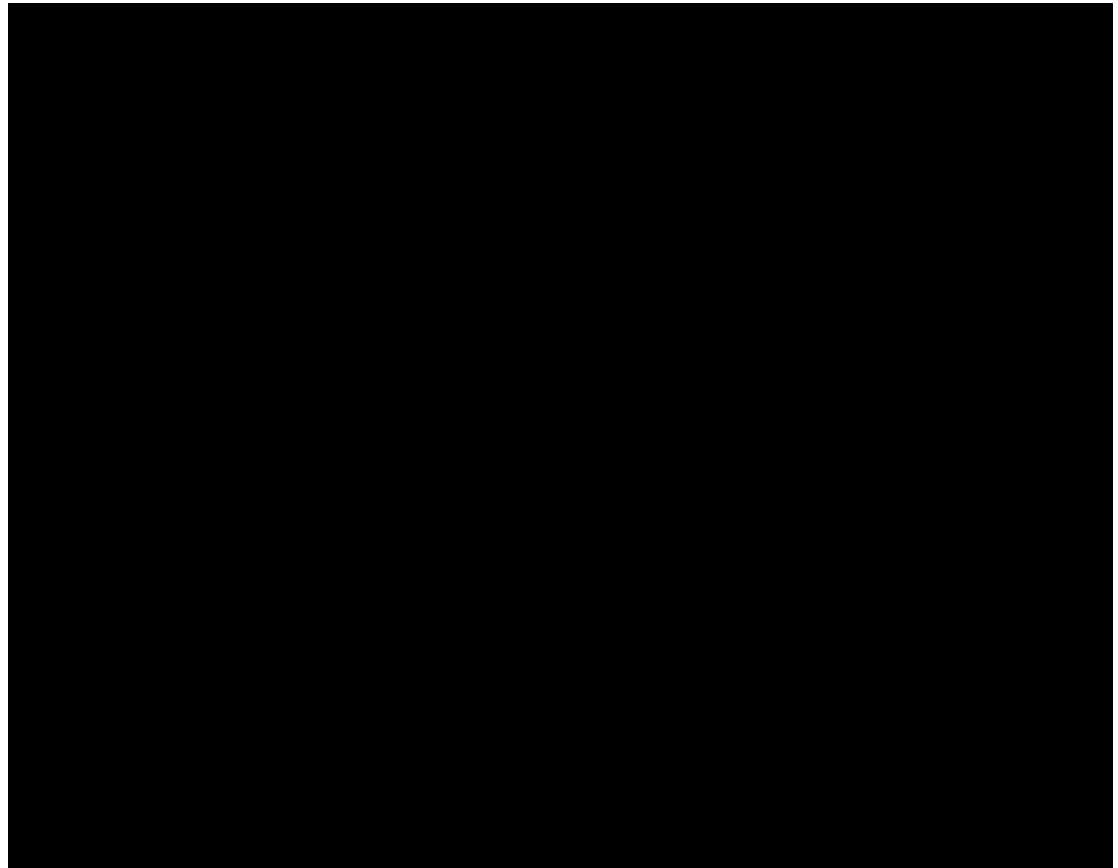
# CaPS Executive Committee Capital Projects Recommended to Governing Council



## HIGHLIGHTED CAPITAL PROJECTS

# CaPS Executive Committee Recommended

1. UTL Downsview Library Storage Expansion
2. UTSC Recreation Wing (Highland Hall)
3. Faculty of Architecture, Landscape & Design, 1 Spadina Crescent, PHASE 2
4. Faculty of Arts & Science, Ramsay Wright Teaching Laboratories
5. UTM North Building, PHASE B
6. Translational Biology Engineering (TBEL), MaRS Phase 2
7. UTL Robarts Commons
8. UTM New Parking Deck, PHASE 2



## UTL DOWNSVIEW LIBRARY STORAGE EXPANSION

ARCHITECT: University of Toronto Design & Engineering

SCHEDULED COMPLETION: July 2015

AREA: 2750 GSM





## UTSC RECREATION WING (HIGHLAND HALL)

ARCHITECT: Perkins + Will

SCHEDULED COMPLETION: June 2017

AREA: 12 400 GSM



**FACULTY OF ARCHITECTURE, LANDSCAPE & DESIGN, 1 SPADINA CRESCENT, PHASE 2**

**ARCHITECT: NADAA & Adamson Associates Architects**

**SCHEDULED COMPLETION: August 2016**

**AREA: 750 GSM**



UNIVERSITY OF  
**TORONTO**

**2014 Annual Report – CaPS Ex. Recommended Projects**  
**Executive Committee of the Capital Projects & Space Allocation Committee (CaPS)**  
**UNIVERSITY PLANNING, DESIGN & CONSTRUCTION**



**LEGEND:**

- MEDIA TEACHING ZONE
- SERVICES ZONE
- FUME HOOD (additional mech. requirements to be considered)
- VISUAL CONNECTION TO CORRIDOR (science on display)

## FACULTY OF ARTS & SCIENCE, RAMSAY WRIGHT TEACHING LABORATORIES

ARCHITECT: DIALOG Design

SCHEDULED COMPLETION: Phased Completion

AREA: 5840 GSM

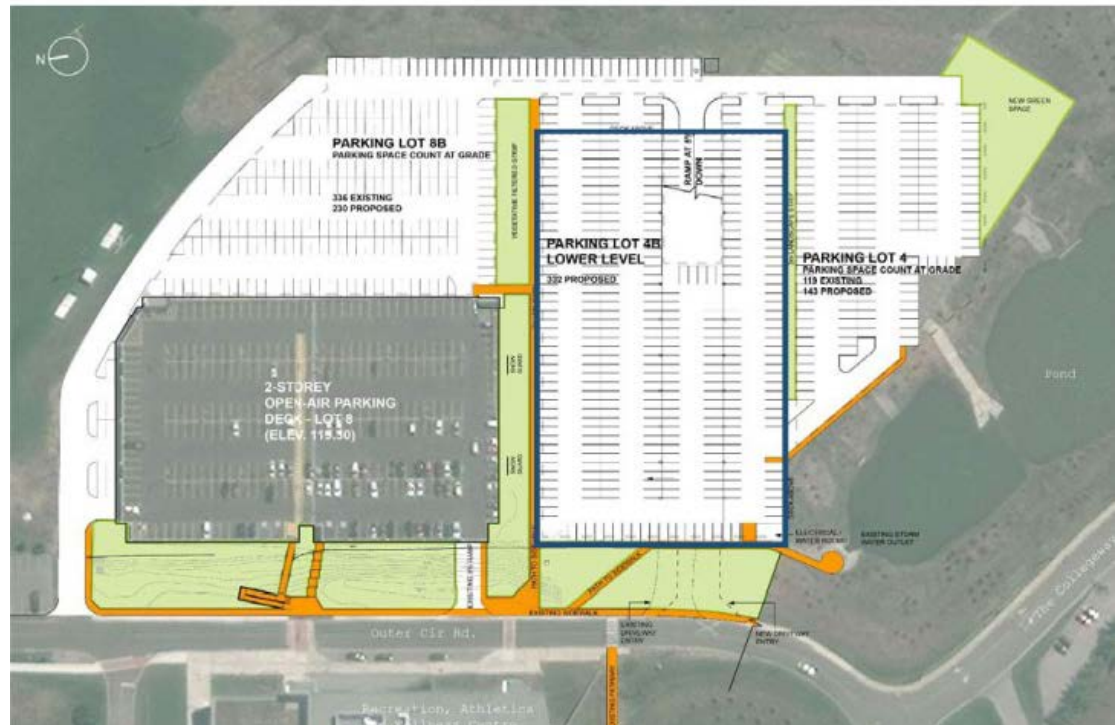




**TRANSLATIONAL BIOLOGY ENGINEERING (TBEL), MaRS Phase 2**



**UTL - ROBERTS COMMONS**  
ARCHITECT: Diamond Schmitt Architects  
AREA: ~5600 GSM



## UTM NEW PARKING DECK, PHASE 2

ARCHITECT: Kearns Mancini Architects Inc.

ENGINEERS: Read Jones Christoffersen Consulting Engineers



**HIGHLIGHTED CAPITAL PROJECTS**  
**CaPS Executive Committee**  
**Project Planning Committees**  
**Terms of Reference Approved**

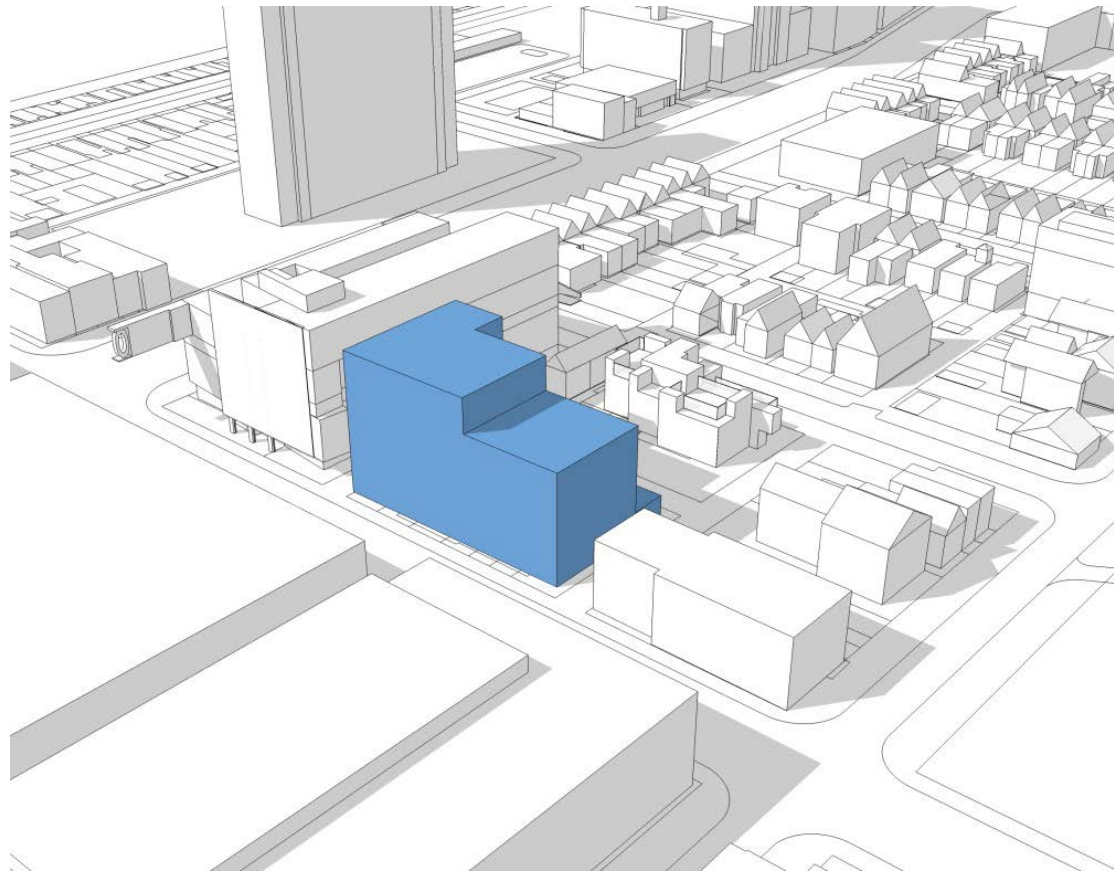
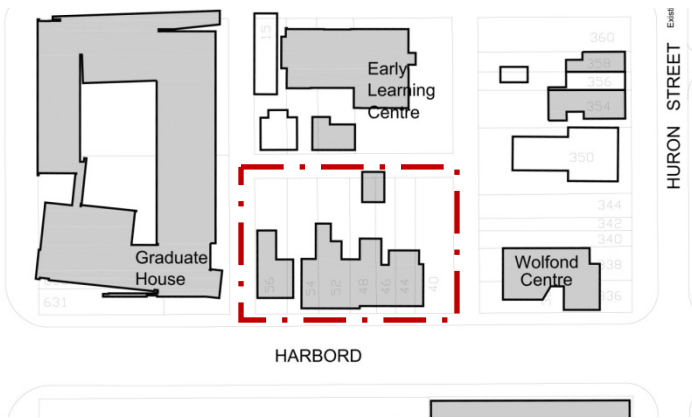


## HIGHLIGHTED CAPITAL PROJECTS

# CaPS Executive Committee T.O.R. Approved

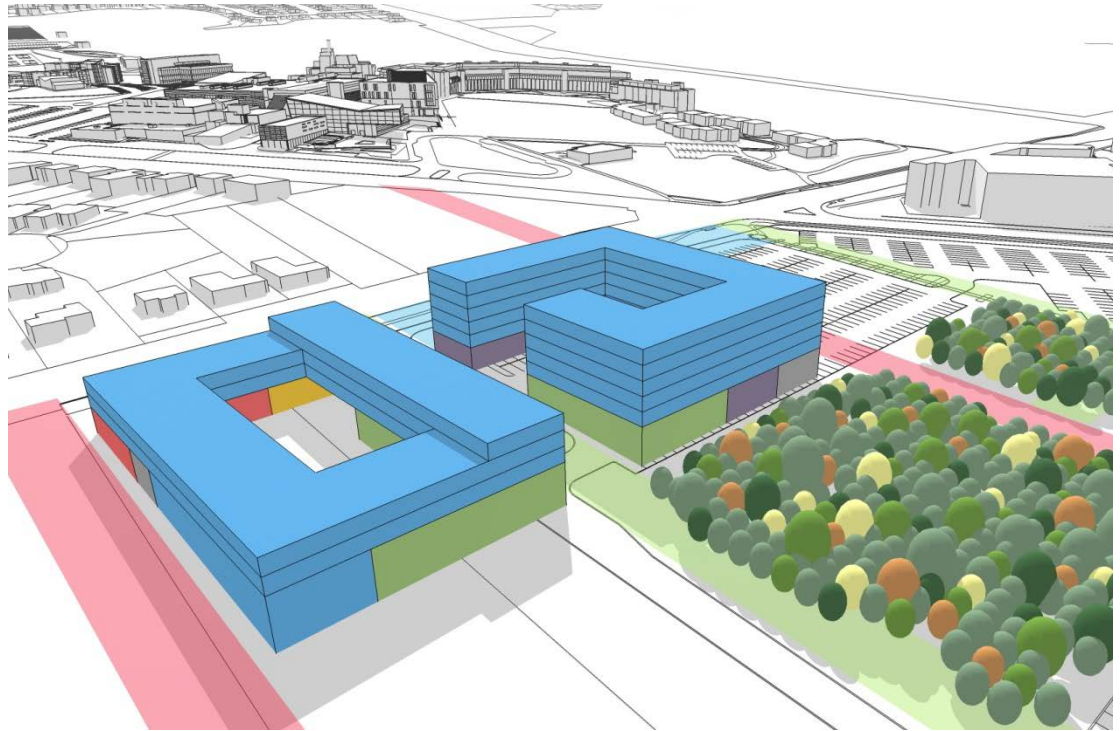
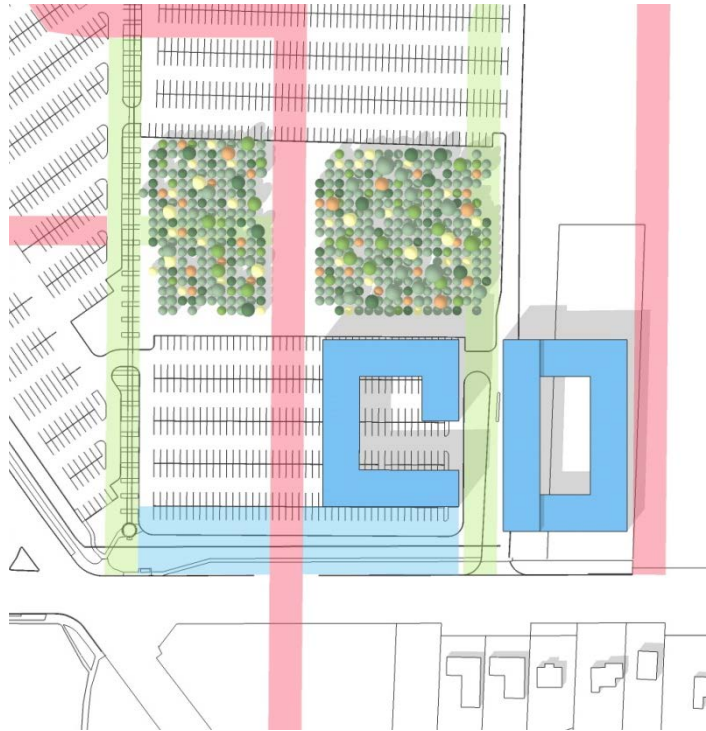
1. Faculty of Medicine, FitzGerald Building Revitalization
2. Ancillary Services, New Graduate Residence, Harbord Street
3. UTSC New Student Residence
4. UTSC New Parking Structure
5. 90 Queen's Park
6. Ancillary Services, Spadina Sussex Student Residence
7. UTM, New Parking Deck, PHASE 2
8. University College Revitalization



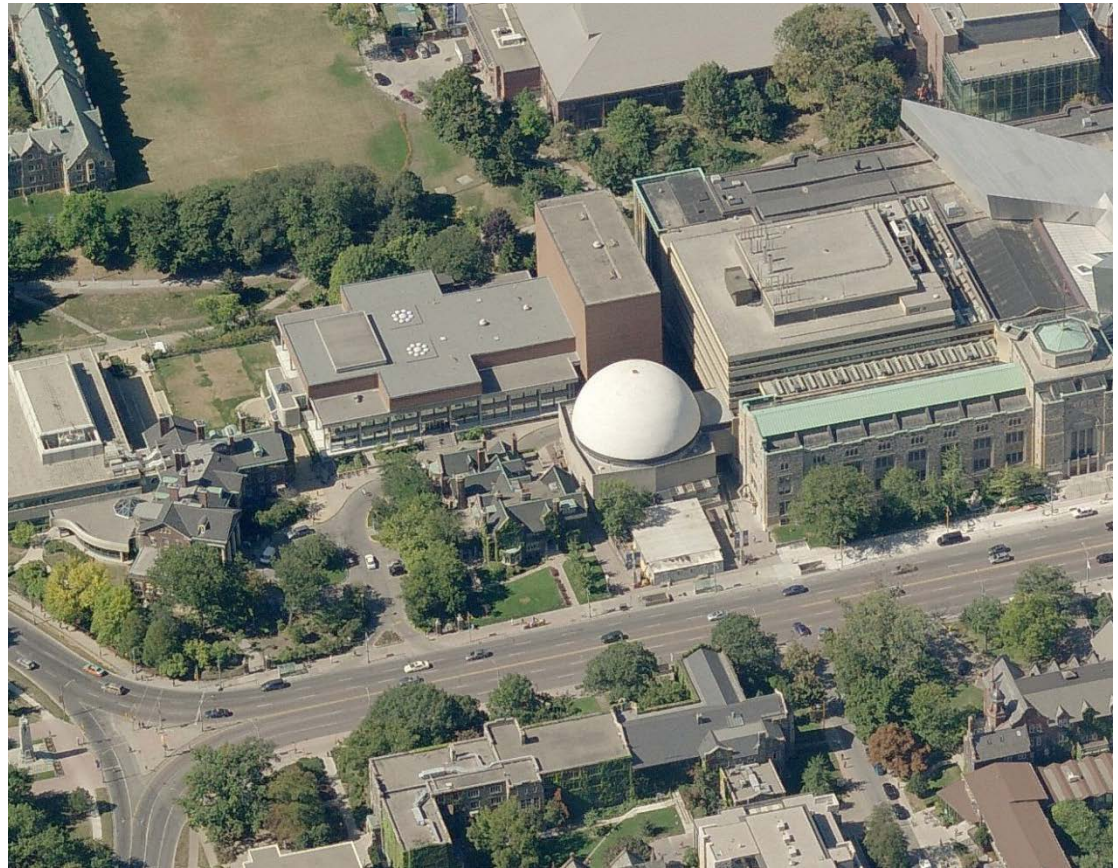
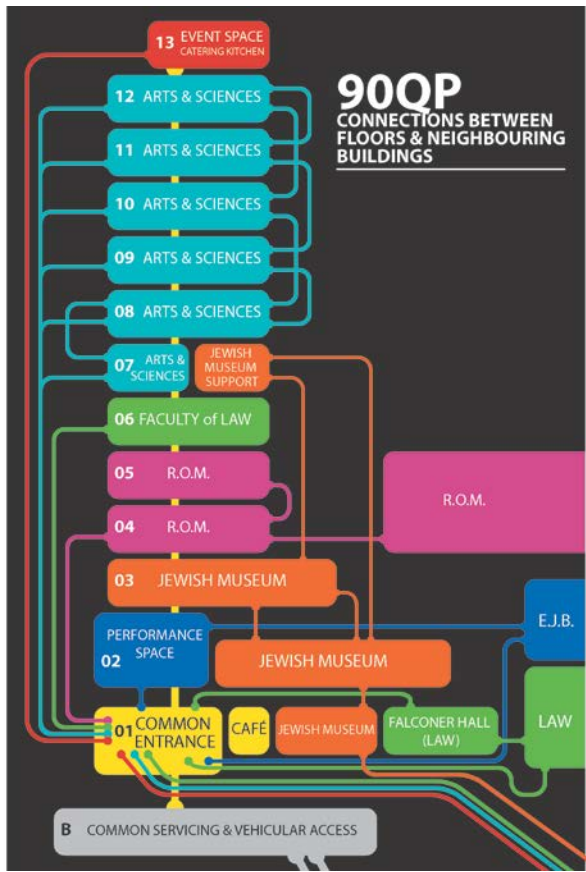


## NEW GRADUATE RESIDENCE on HARBORD STREET

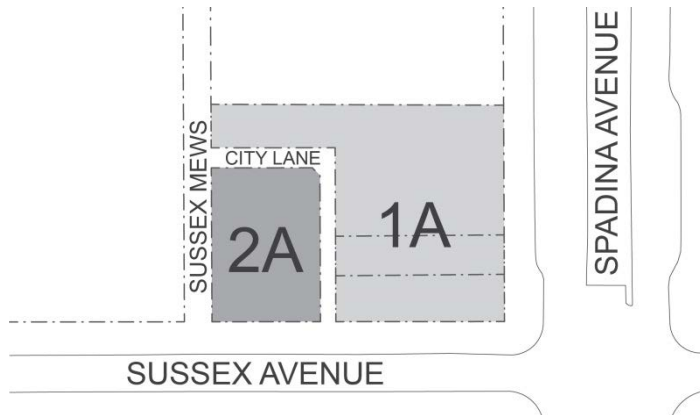
Ancillary Services



UTSC NEW STUDENT RESIDENCE



90 QUEEN'S PARK



**SPADINA SUSSEX RESIDENCE**  
Ancillary Services





# HIGHLIGHTED CAPITAL PROJECTS LANDMARK COMMITTEE



## LANDMARK COMMITTEE



# IN SUMMARY:

- CaPS Structure
- CaPS Membership
- CaPS Responsibilities